

23

know \_\_\_\_\_ if I go, there's just no tell-ing how far I'll

A bit slower ♩ = 80

(PLAYER 7):

25

go.

PLAYER 6:

*mp*

(PLAYER 6 stands up, looking at  
PLAYER 7 in agreement.)

I wan - na be \_\_\_\_\_ where the peo - ple are. \_\_\_\_\_

(PLAYER 6):

26

I wan - na see, — wan - na see 'em dan - cin',

27

walk - in' a - round on those... what do you call 'em? Oh,

28

feet. Flip-pin' your fins you don't get too far. —

30

Legs are re - qui - red for jump - in', danc - in',

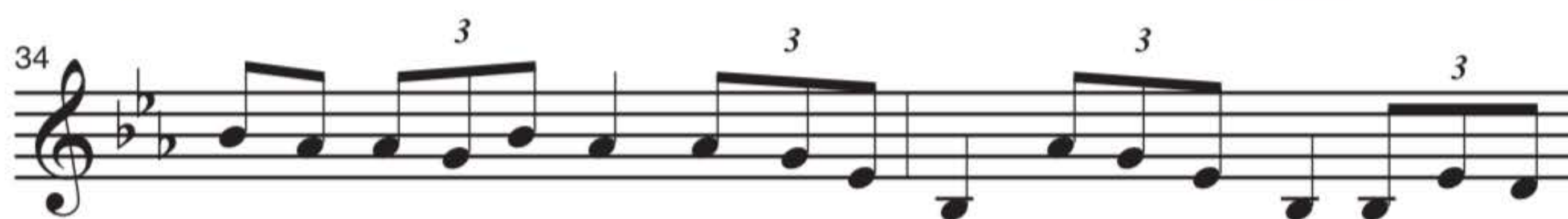
31

stroll-in' a - long down a... what's that word a - gain?





Street! Up where they walk, up where they run, up where they



stay all day in the sun. Wan-der-in' free, wish I could be part of that



world. What would I give if I could live out of these



wa-ters? What would I pay to spend a day warm on the

accel.



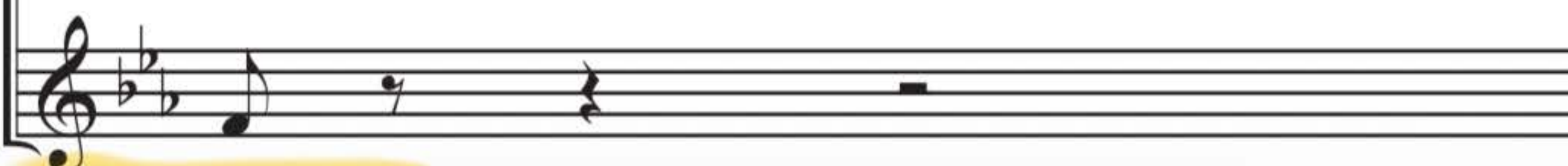
Ev-'ry turn I take,



sand? Bet-cha on land they un-der-



ev - 'ry trail I track, to the



stand.



43

place I know where I can - not go, where I

Bet they don't

44

long to be.

rep - ri - mand their daugh - ters: bright young

45

Tempo I ♩ = 85

See the

wom - en sick of swim-min', read - y to stand. See the

47

line where the sky meets the sea? It calls —

line where the sky meets the sea? It calls —