



7500 FLYING CLOUD DRIVE

OFFICE SPACE FOR SUBLEASE

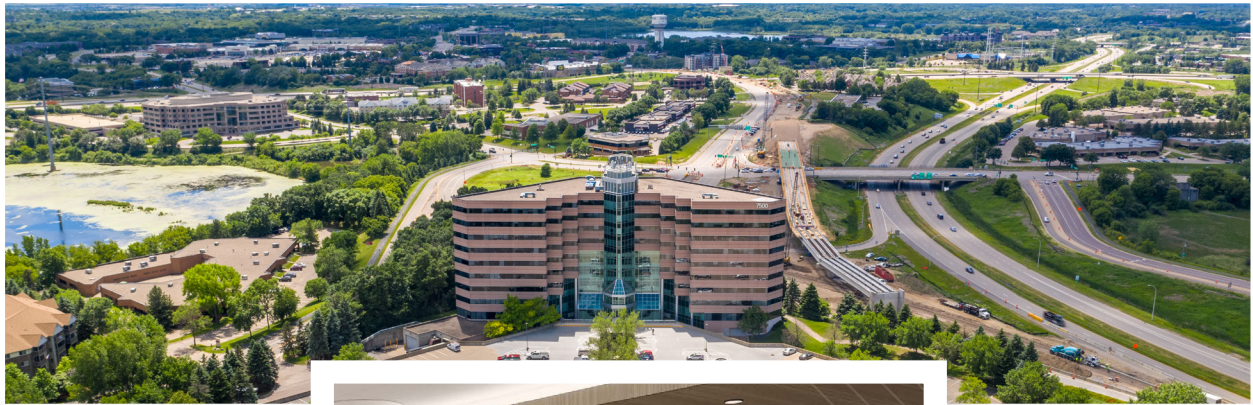
7500 Flying Cloud Drive, Eden Prairie, MN 55344

DETAILS

AVAILABLE	3,622 RSF for Sublease
RENT RATES	Negotiable
PARKING	Abundant covered & surface parking
SUBLEASE TERM	Through January 31, 2028
YEAR BUILT/ RENOVATED	1985 2014, 2017, 2023
AVAILABILITY	Immediate

AMENITIES

On-site cafeteria and cafe lounge, collaboration area and War Room for team strategy sessions
Club lounge + golf simulator, outdoor patio
Training Facility seating up to 100
Fitness Center with lockers & showers
Tenant balconies on all floors
Close to I-494, easy access to restaurant & hotel amenities, plus easy access to MN Highways 169 and 212
Green space within a 10 minute drive
Property Management on site



Local Knowledge

Allows us to uncover unique opportunities for our clients in Minneapolis | St. Paul.



Independent Advantage

We provide personalized service and take the time to fully invest in our clients.



Full-Service

From start to finish: we're directly involved every step of the way.

CONTACT US

Michael Doyle

612.242.8820

mdoyle@kenwoodcommercial.com

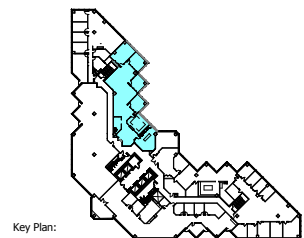
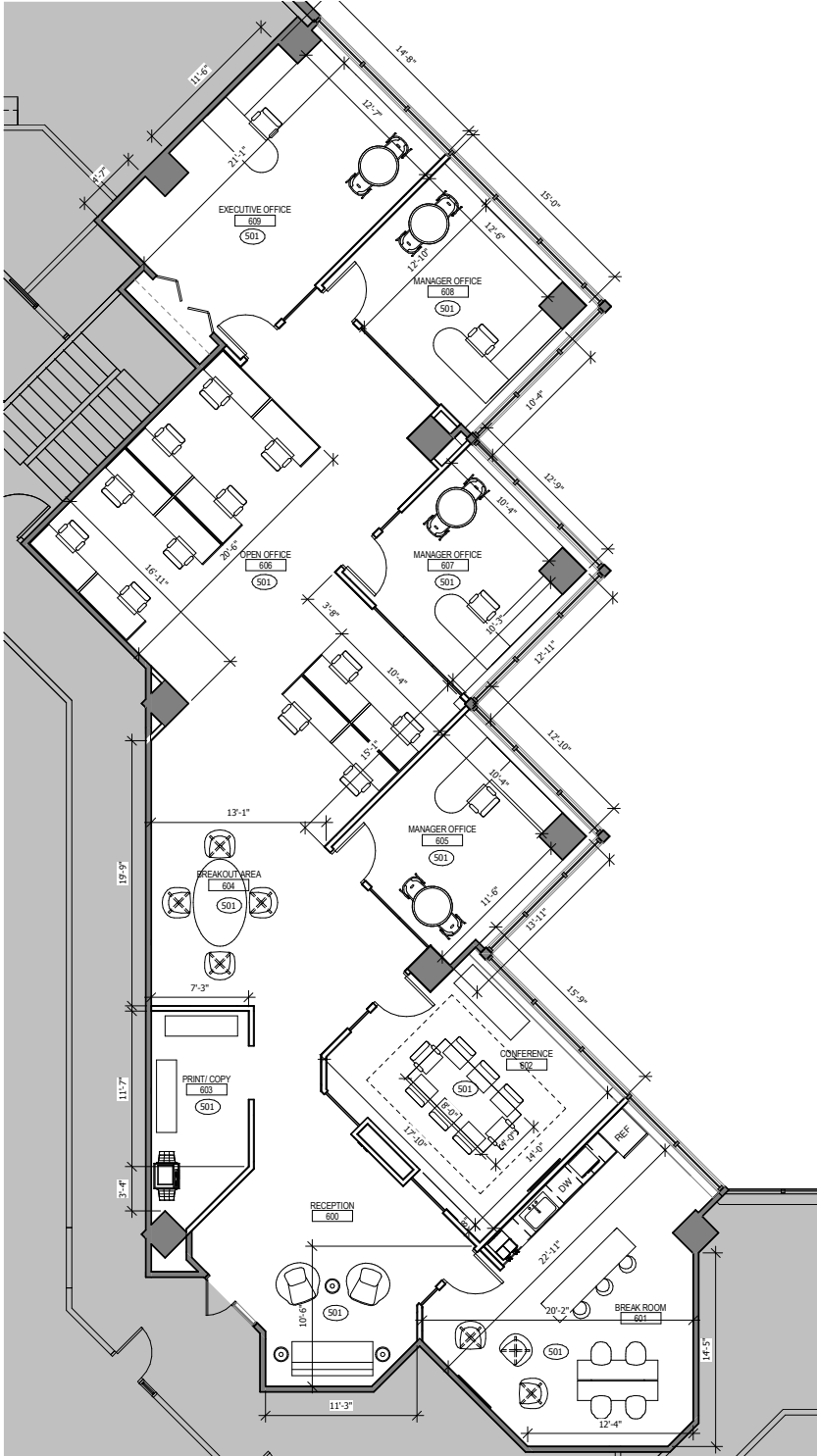
Holly Becker

651.666.856

hbecker@kenwoodcommercial.com

SIXTH FLOOR

3,622 RSF



INTERIOR PHOTOS



AMENITIES



Property Management Office



Pre-Function Space and
Collaboration Zone



War Room



Club Lounge + Golf Simulator

LIGHT RAIL

Proposed extension of Southwest Light Rail

