



CITADEL BUILDING

CREATIVE OFFICE SPACE FOR LEASE

1516 West Lake St. Minneapolis, MN 55408

DETAILS

BUILDING SIZE	17,273 RBA
FLOORS	4
YEAR BUILT	1925
PARKING	53 stalls in on-site and adjacent lots
RENTAL RATES	\$30-\$35/SF Modified Gross
2026 TAX & OPS	\$14.50 per square foot

AMENITIES

Executive Suite on 3rd floor includes individually keyed suite and common kitchen area

Located in the heart of Uptown

Shower/locker room for tenant use on first floor

Great access to transit, restaurants & shopping

Just blocks away from Bde Maka Ska, Lake of the Isles, and the Midtown Greenway

Convenient off-street parking for tenants & guests

Awesome work, live, play environment



Local Knowledge

Allows us to uncover unique opportunities for our clients in Minneapolis | St. Paul.



Independent Advantage

We provide personalized service and take the time to fully invest in our clients.



Full-Service

From start to finish: we're directly involved every step of the way.

CONTACT US

Nils Snyder

612.240.7967

nsnyder@kenwoodcommercial.com

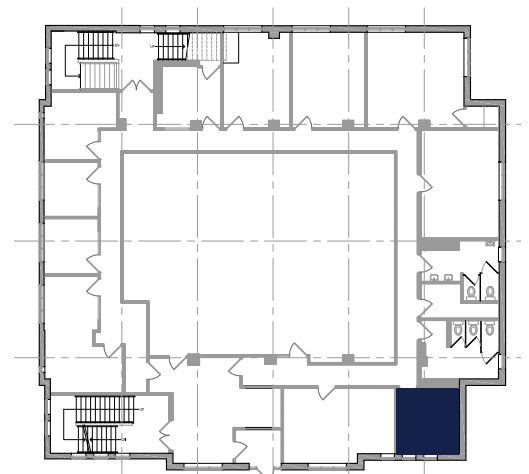
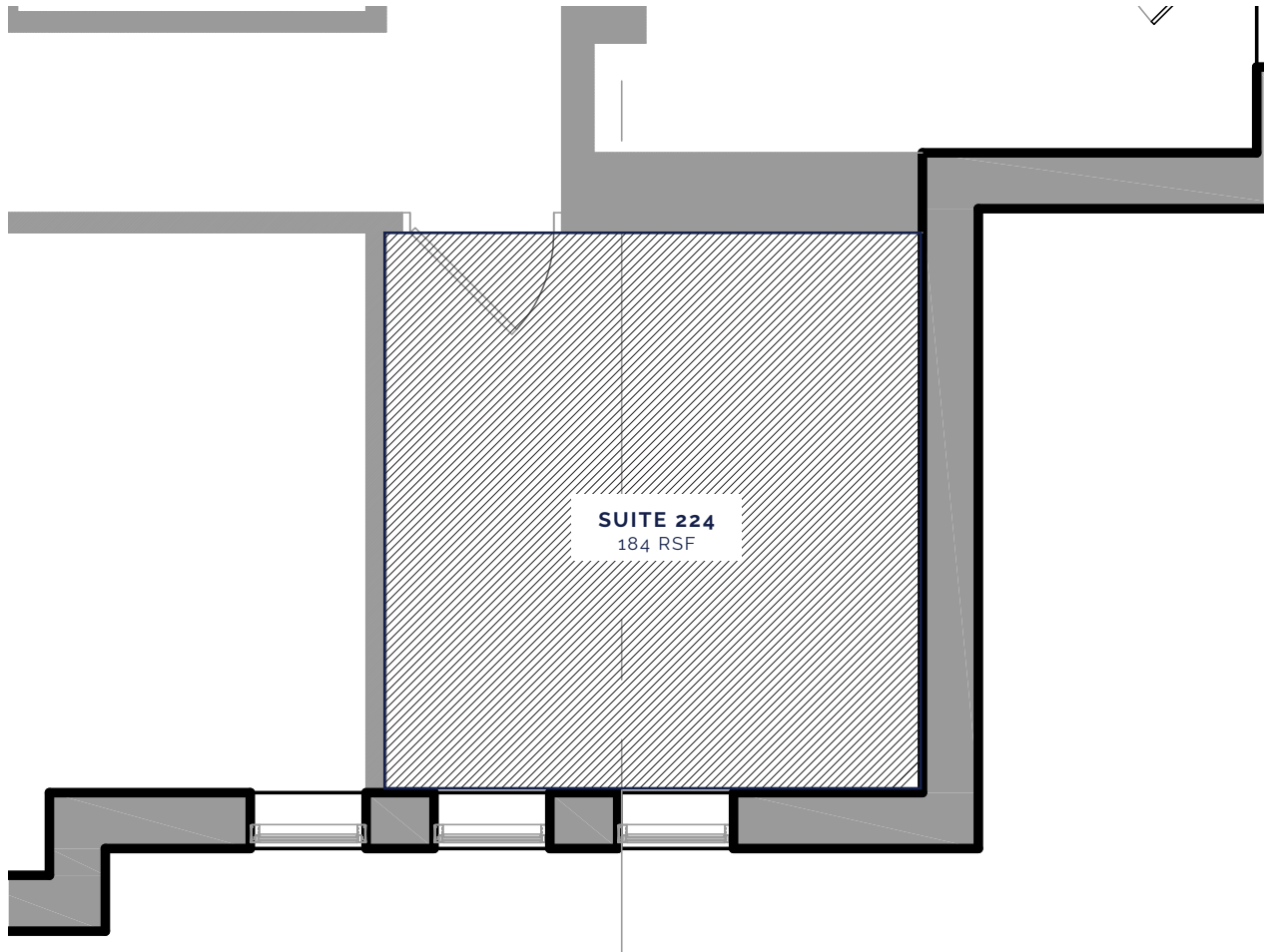
Mike Doyle

612.242.8820

mdoyle@kenwoodcommercial.com

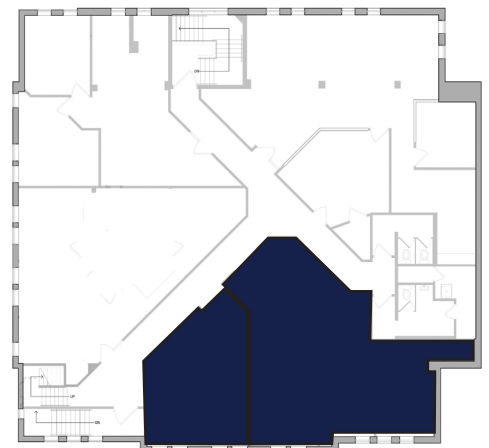
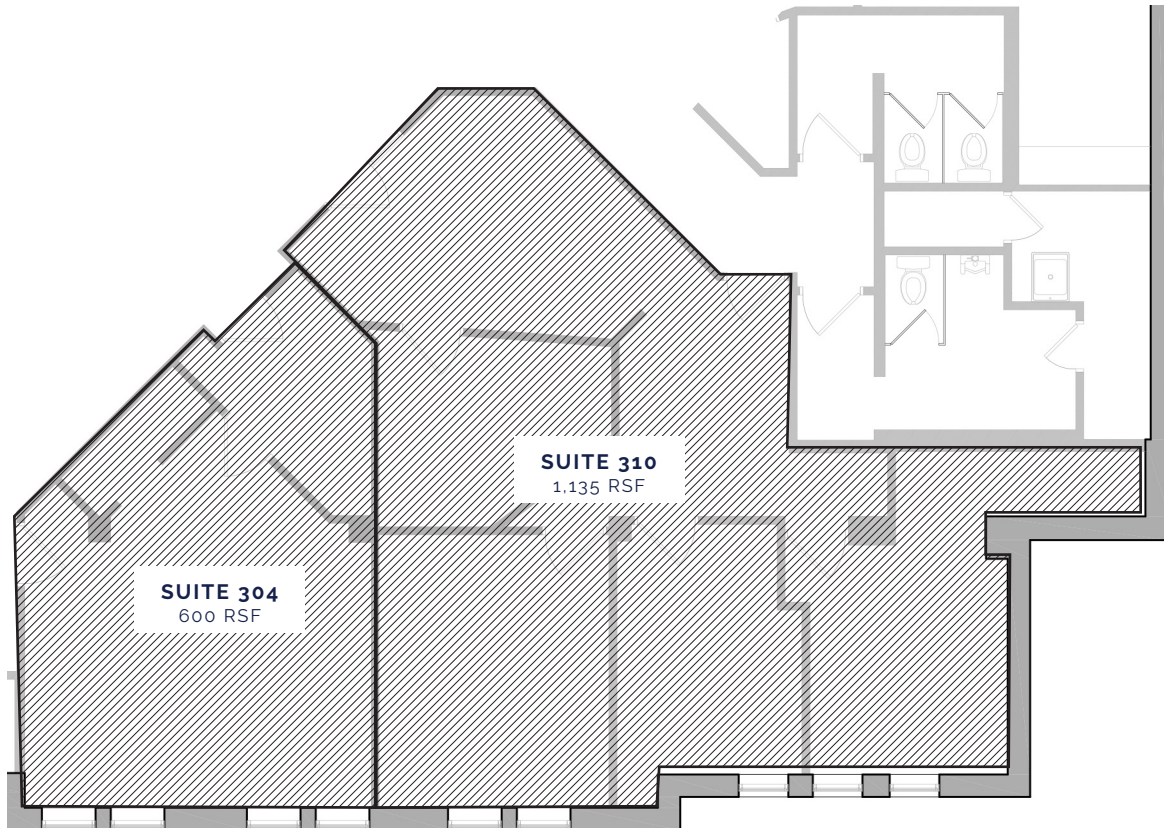
SECOND FLOOR

Suite 224: 184 RSF



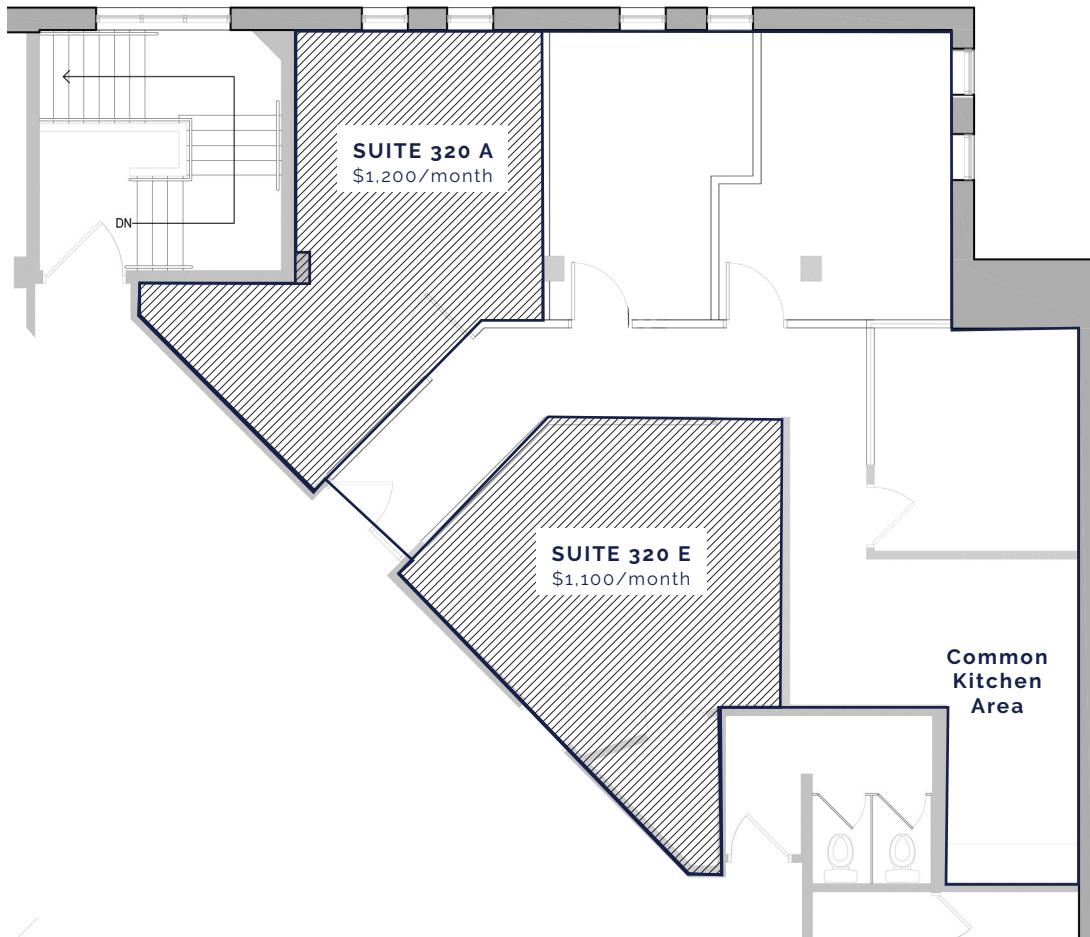
THIRD FLOOR

Suites 304 + 310: 1,735 RSF



THIRD FLOOR

Suite 320: Executive Suite
Space A - 285 RSF



CITADEL BUILDING

1516 West Lake St. Minneapolis, MN 55408

PARKING

10 stalls in on-site lot, 43 in adjacent lot

