



Nantucket Island
Safe Harbor for Animals



Beyond Rescue

Building Hope for Animals and Our Community

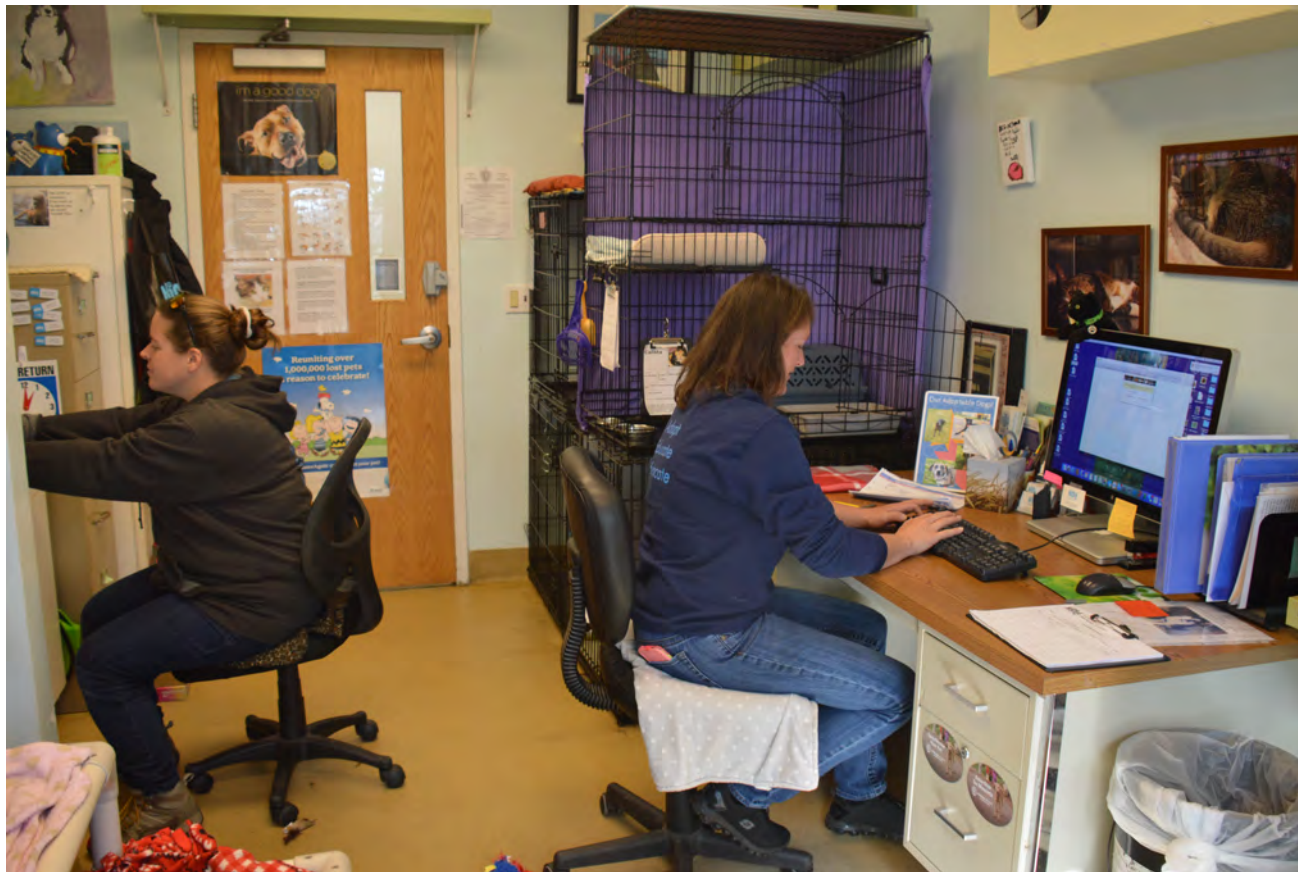


Nantucket is an island of natural beauty and rich history.

Our beaches, waters, and conservation land are home to countless species, and pets are a mainstay of our island's culture.

Since 2012, NiSHA has sheltered lost and homeless animals, connected rescue pets with loving families, supported pet families in difficult times, and given seniors and children the love and connection they crave.





The Need for a Permanent Home

NiSHA outgrew its original 700-square-foot rental space at Offshore Animal Hospital within its first year of operation in 2012. While this partnership allowed us to begin serving the community, the space has long limited our capacity—and our landlord now requires the space back in order to expand critical veterinary services.

At the same time, Nantucket's high cost of living, aging population, severe housing shortage, and growing mental health challenges have significantly increased the demand for NiSHA's programs and support. Families facing housing instability, financial strain, or health crises are turning to NiSHA for help at unprecedented levels.

Since 2012, NiSHA has sheltered and cared for more than 3,400 animals. A permanent, purpose-built rescue and education center will allow NiSHA to meet today's needs while preparing for tomorrow's challenges, ensuring that we never have to turn away an animal.



Our strategic plan—developed with significant input from our Nantucket community—addresses these growing issues and offers a roadmap for our next decade: NiSHA will become Nantucket's animal wellbeing center, expanding our programs to rescue animals, educate the public, and assist our local community. In order to do all we can for Nantucket pets and their families, we need our own facility.



Our New Home Will Include:

- Rescue and Adoption Shelter
- Education and Community Center
- On-Site Medical Services for Shelter Animals
- Memorial Gardens and Open Space
- Pet-Friendly Staff Housing
- Low-Cost Spay/Neuter and Vaccine Clinic





Who Will Benefit From Our New Campus?

- Abandoned or relinquished animals
- Seniors with pets
- Low-income pet families
- Children of all ages
- Animals with anxiety or behavioral challenges
- Lost or stray pets
- Hospital patients
- Assisted living residents
- People grieving the loss of their beloved pets
- Our entire community!

NiSHA gives animals a second chance to find loving homes, provides financial and practical assistance for pet families in need, improves animal wellbeing through education and behavior training, and provides animal-assisted therapy to schools, hospitals and senior centers. In our new home, we will offer new services and help even more animals and people.



Dog Rescue

Each year, NiSHA provides care for approximately 200 dogs from Nantucket and beyond. These dogs arrive at our shelter as strays or lost pets (40%), are relinquished by local families facing difficult circumstances (20%), or are transferred from partner shelters to ensure safe placement and prevent overcrowding and needless euthanasia elsewhere (40%).



With an average length of stay of 45 days, our new Dog Adoption Center is designed to comfortably accommodate at least twelve adult dogs or up to seventeen puppies at any given time. The space will feature bright, open, and thoughtfully designed environments that support both physical health and emotional well-being—helping dogs feel secure, enriched, and ready for reunification with their families or adoption into loving new homes.



Designated Safe Spaces

Each year, approximately 200 dogs and cats require an initial 48-hour quarantine period upon arrival at NiSHA to ensure the health and safety of all animals in our care. In addition, NiSHA leases space to the Town of Nantucket and is required to maintain at least one available kennel at all times for lost or stray animals found in the community.



The new facility will include two fully separate quarantine and isolation areas—one for dogs and one for cats—each equipped with independent air-handling systems. This design allows NiSHA to safely care for animals with different contagious illnesses at the same time, while protecting healthy animals, staff, and volunteers. Purpose-built isolation spaces are essential to maintaining high standards of animal welfare, disease prevention, and community safety.



Cat Rescue

Each year, NiSHA provides care and shelter for approximately 200 cats, with an average length of stay of 39 days. To meet this demand, the new Cat Adoption Center is designed to comfortably accommodate approximately 20 healthy cats at any given time. The cats in our care arrive from a variety of circumstances: lost or relinquished by local families (15%), feral kittens humanely trapped on the island and prepared for adoption (55%), and transfers from overburdened partner shelters (30%) to ensure lifesaving outcomes.

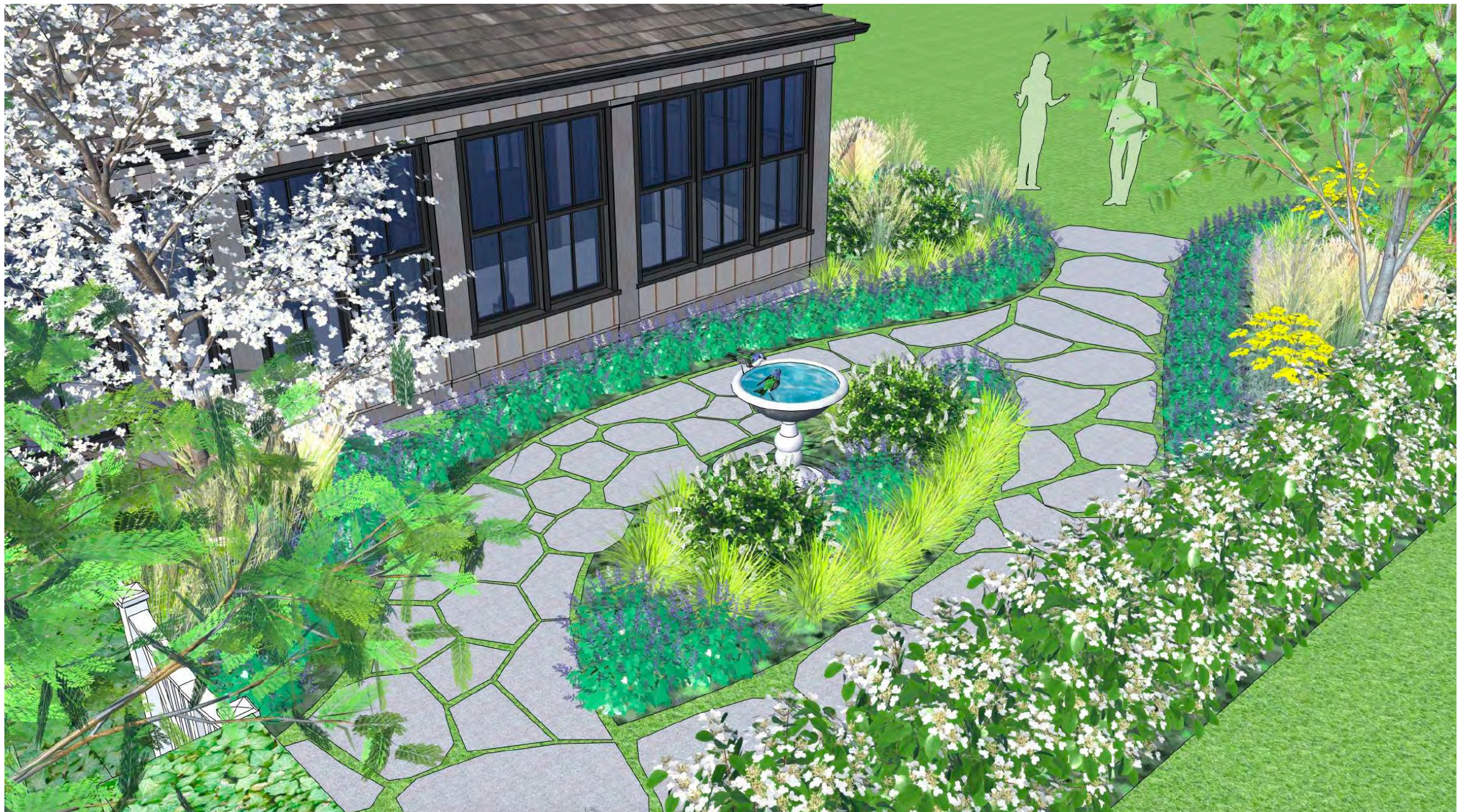


The Cat Adoption Center will feature bright, low-stress environments with access to fresh air and natural sunlight —elements proven to reduce anxiety and support feline well-being.



Serenity Garden

Adjacent to the cat wing, a peaceful outdoor serenity garden will be created for visitors, while cats will enjoy visual enrichment through secure “cattios” overlooking the garden. Plantings such as butterfly bushes will provide calming stimulation for cats. These thoughtfully designed spaces help prepare cats for successful adoption into loving homes.



Smaller Friends

Since our founding, NiSHA has welcomed and cared for more than 200 small animals—including rabbits, guinea pigs, birds, turtles, hamsters, and other species—who often have few safe options for rescue and rehabilitation. These animals require specialized husbandry, quiet environments, and species-specific care that can be difficult to provide in traditional shelter settings. In our new facility, NiSHA will include a dedicated small-animal care room designed specifically to meet these needs, allowing us to provide appropriate housing, medical oversight, and enrichment while reducing stress and improving outcomes. This space reflects our commitment to being a truly comprehensive animal welfare organization, ensuring that every animal—no matter how small—receives the thoughtful, compassionate care they deserve.



Education & Training Center

To create a world where animals are treated with kindness and compassion, we must cultivate a culture of learning, connection, and shared responsibility. NiSHA's Education Wing will be a welcoming and inspiring space for children and adults alike—strengthening the bond between people and animals while providing practical support for families in our community. Through hands-on learning and community engagement, this center will host:

- Educational programs for all ages
- Dog training and behavior classes
- Nail trim and vaccine clinics for cats and dogs
- Animal-assisted therapy training and certification courses
- Community events and workshops
- Dedicated meeting space for volunteers and partners





Medical Clinic

The new facility will include a small, on-site medical clinic dedicated to supporting the health and recovery of animals in NiSHA's care. This clinic will allow for timely examinations, basic treatments, and post-treatment recovery, reducing stress on animals and improving overall outcomes. As capacity and resources allow, NiSHA plans to extend these services to the broader community by offering low-cost spay and neuter services, vaccination and microchip clinics, and compassionate, low-cost euthanasia for families facing difficult end-of-life decisions. Together, these services are essential to preventing overpopulation, keeping pets healthy, and ensuring humane, dignified care at every stage of an animal's life.



Memorial Garden

This tranquil and beautifully landscaped memorial garden will be open to the public as a place of reflection, remembrance, and healing. Designed as a serene sanctuary, the garden will feature flowering plants and trees surrounding a meditative reflection pool, with memorial benches and engraved stones honoring cherished companion animals who have passed. In keeping with NiSHA's commitment to compassionate, whole-life care, the new facility will also offer grief support and end-of-life assistance for companion animals, helping families navigate loss with dignity, peace, and deep respect for the human-animal bond.



Affordable and Pet-Friendly Housing

Essential to NiSHA's future, affordable employee housing units will include outdoor space for pets to have fresh air and enrichment. Phase one will include one of two duplexes as well as a basement apartment for visiting veterinarians, behavior specialists, or other professionals offering continuing education opportunities.





Community Assistance

Our new facility will allow us to expand our services rescuing animals, educating the public, and assisting pets and their families.

- Pet Behavior Counseling & Training
- Spay & Neuter Assistance
- Resource Center for Comprehensive Animal Education
- Animal Assisted Therapy
- Pet Food Pantry
- Companion Animal Adoption Opportunities
- Disaster Preparedness Training
- Temporary Shelter for Lost or Unwanted Pets
- Animal Memorial and Grief Services
- Wildlife Information
- Farm Animal Support
- Pet-Friendly Housing for Staff



What will it take to build a new home for NiSHA?

A Capital Campaign to Raise \$22M

70% RAISED!

GIFT LEVEL	GIFTS NEEDED
\$4,000,000	
\$1,000,000	       
\$500,000	        
\$250,000	         
\$100,000	                         
<div> <div>Many gifts of \$50,000, \$25,000 and < \$25,000</div> <div> = gift has been secured</div> </div>	



NAMING OPPORTUNITIES

A gift to NiSHA's Beyond Rescue capital campaign will impact thousands of animals and people each year, and help create a community that cares for every animal in need. Your naming gift allows us to publicly acknowledge your generosity. You may also use a naming gift to honor a family member, beloved animal or friend.



Animal Rescue Center
\$5M

\$1M



Medical Clinic

\$1M



Affordable Staff Housing

NAMED



Cat Adoption Center

NAMED



Dog Adoption Center

NAMED



Public Memorial Garden

NAMED

Training & Education Center



\$500K

- Small Animal Adoption Center
- Welcome Area
- Feline Enrichment Area
- Animal Arrival Centers - 2
- Dog Greeting Courtyard
- Cat Serenity Garden

\$250K

- Dog Play Yards - 4
- Cat Meet and Greet
- Cat Porches - 2
- Medical Treatment
- Counseling Room
- Exam Room

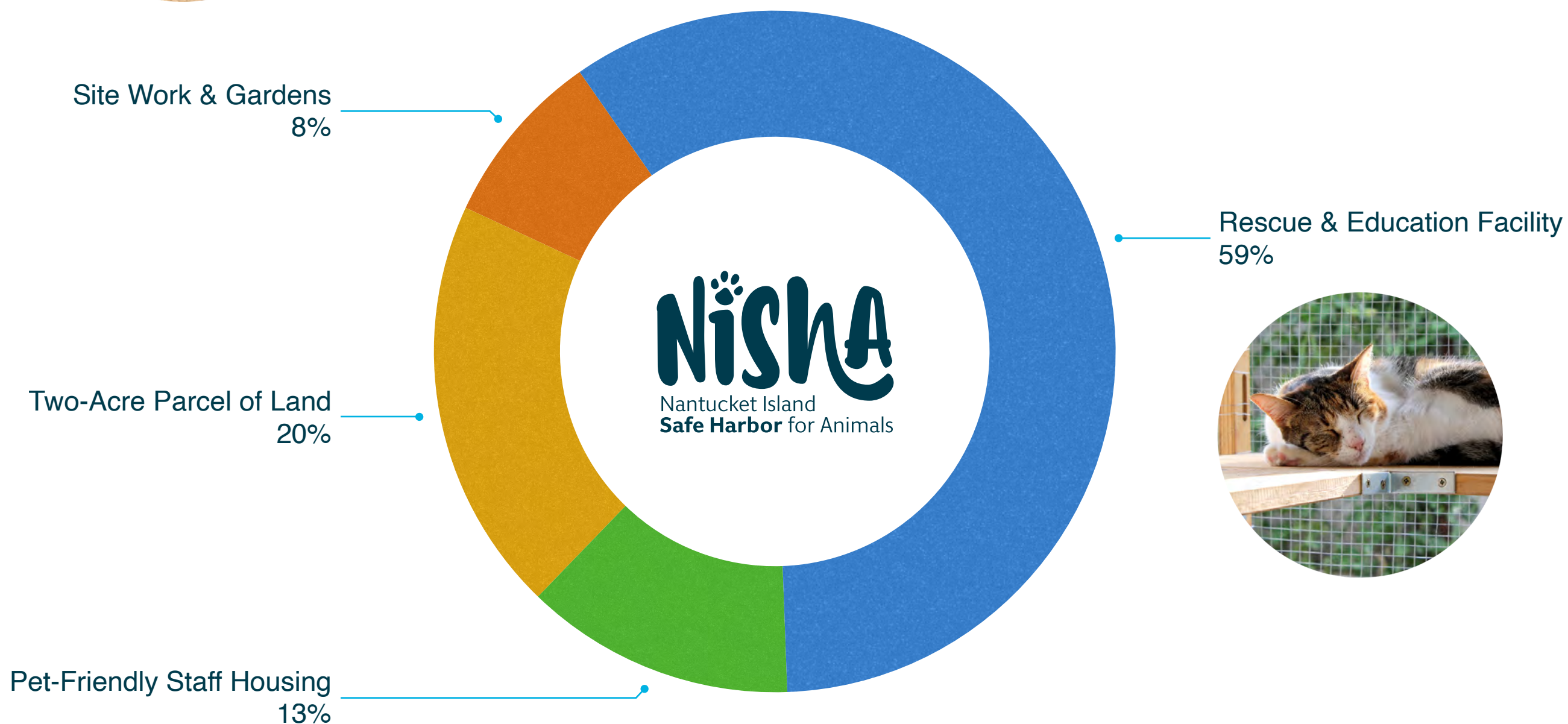
\$100K

- Pet Food Pantry - NAMED
- Dog Suites
- Surgery Suite - NAMED
- Cat Suites





How will these funds be invested?





Public Phase - Summer 2026

Once we reach 75% of funds raised, everyone will know and can support our last push

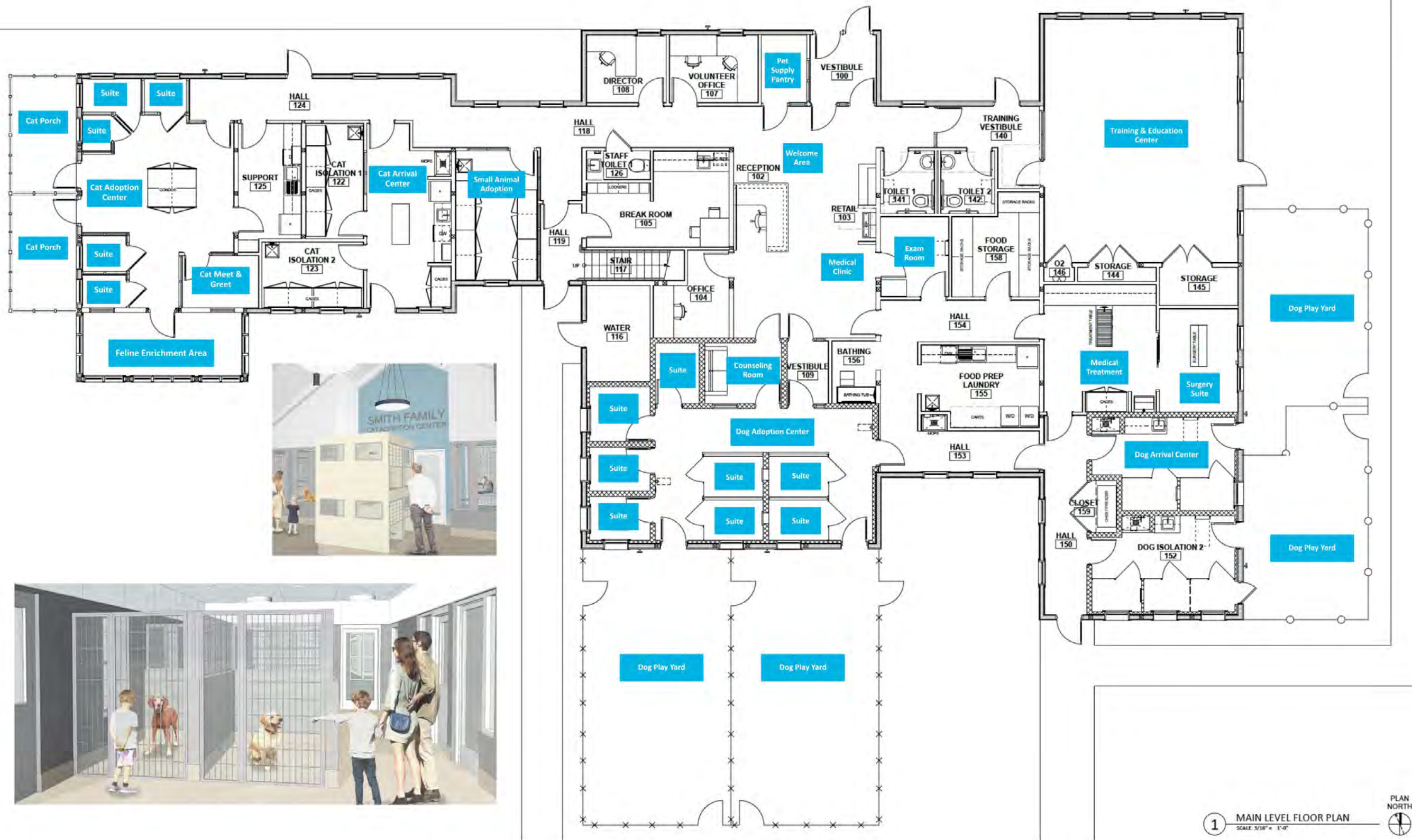
Quiet Phase - 2024/2025

Solicit from Board and our closest donors first

Build - 2026

Construction begins with the hope to move in early 2027





A Space for Everyone

From children to the elderly, from caring for companion animals to assisting our community. . . NiSHA's new animal wellbeing center will be a welcoming place for all and where no animal in need will ever be turned away.



We invite you to join us in creating a brighter future for animals and people alike.

By supporting NiSHA, you are supporting a legacy of compassion and care on Nantucket.





Campaign Committee

Sally Charpie, *Board President & Co-Chair*

Grace Traber, *Board Emeritus & Co-Chair*

Kim Bepler

Kelly McKernan

Arienne Bistany

Laurie Monahan

Mark Clausen

Ann Muhlhauser

Sara Finn

Scott O'Connor

Mimi Huber

Christine Swistro

The Project Team

O'Connor Custom Builders, Scott O'Connor - *Project Oversight*

The Andersen Company, Scott Andersen - *General Contractor*

Emeritus, Matthew MacEachern - *Lead Architect*

Blue Sky, Nick Collins - *Interior Architect*

Jardins International, Elisabeth O'Rourke - *Landscape Architect*

Advisory Council

Rick Charpie

Katie Keith

Susan Doughan

Craig Muhlhauser

Robert M Levy

NiSHA Leadership

Jessica Castineiras, *CEO, Founder*

Stephanie Henke, *Associate Director, Founder*

Piper Hollis, *Campaign Strategist*



Nantucket Island
Safe Harbor for Animals