

GLASSLINE

2018



TABLE OF CONTENTS

THE COMPANY RESOURCES	04
RESIDENTIAL TOWERS & COMPLEXES	38
PUBLIC PROJECTS	66
SPECIAL STRUCTURES	88
OFFICE BUILDINGS	122
SHOPPING AND LEISURE CENTERS	154
MINIMALISTIC FACADES	182

SHAPING THE CITIES OF THE FUTURE

Shaping the cities of the future

Glassline is at the heart of the execution of contemporary architecture specializing in innovative building skins. We provide turnkey solutions encompassing design, engineering, manufacturing & execution of all our projects.

Since its establishment in 1995, Glassline's workforce grew to more than 1'000 employees. Our state of the art production plants strategically located in Lebanon & the Gulf are key to our accomplishments covering a vast geographical area spanning the MENA, The Gulf & Europe.

Over the years, Glassline has widened its scope and enriched its portfolio while operating at the highest international quality and safety standards. We provide technical solutions that reply to high thermal, environmental, acoustic, safety and seismic-resistant performance requirements of architectural facades while catering to a growing list of clients in various sectors.

Our ability to adapt to the requirements of a continuously changing market environment and avail solutions to the most challenging tasks was key to our growth from a local enterprise into a major regional player.

Today, we are proud of our regional portfolio of projects. Our unwavering professionalism and our commitment to our projects have earned us associations with global construction leaders, including regional

and international contractors, façade consultants and architects. Together, we have raised towers, modernized facades, erected complex buildings, international airports, malls, hospitals, universities, cultural centers, public projects, high end private residences and widely acclaimed landmarks.

Our commitment in investing in human resources is key to our growth. By encouraging personal development through training and fostering a philosophy of knowledge sharing, we continuously educate our staff and expose them to the latest advancement of the industry as well as insure a transfer of knowledge and expertise from a mature generation to a younger one that is eager to learn. Every job is a new challenge and learning experience for us be it in design, production or execution. Over the years, our professional team of engineers, project managers and support staff have gathered a wealth of experience and know how to execute the boldest architectural visions that seem, at first glance, impossible to realize, thus transforming the client aspirations into achievable concepts.

As we look to the future, we aim to leverage, and build on, our established renown with the commissioning of larger scale international projects. In doing so, we maintain our commitment to quality, our efforts towards a sustainable future and our aim for excellence.



CORE VALUES

Integrity

Integrity is a cornerstone of our corporate culture. We honor our commitments and strive to maintain employee, client and supplier cooperation based on mutual respect and transparency. Throughout our activities, integrity strengthens our dedication to providing a genuine service and upholds our commitment to sustain a high standard of operational excellence and ethical conduct.

Employee ownership

Glassline encourages its employees to take ownership and benefits from their expertise to drive the success of the company. By working together to uphold Glassline's Company Vision and Core Values, we are building a future dedicated to sound leadership and personal responsibility. Employees are encouraged to undertake initiatives for the benefit of the company and actively participate in furthering Glassline's development.

Creative thinking

We pride ourselves on being creative and pro-active problem solvers. We seek to find durable solutions tailored to our clients' needs. Through innovative thinking, we are driven to defy parameters and seek cutting edge solutions that benefit our projects.

Talent recognition

Our teams' skills and talents are highly recognized. By investing in their development Glassline achieves greater collective success. Our internal relationships are built on trust, integrity and transparent communication.

Safety

Safety is a consideration we take very seriously. Our comprehensive safety systems and procedures are developed, maintained and periodically reviewed and upgraded. They cover all aspects of our involvement, from office practices, to structural design, to production facilities and site installations.





DESIGN & ENGINEERING

Glassline's Engineering Department handles complex designs from the preliminary stages and throughout the project implementation.



Challenges are the driving force behind the creativity and ingenuity of Glassline's Design & Engineering Department. Our team's technical expertise and enthusiasm for new solutions is involved in the early design development stages of a project with a continuous search for individual solutions. Through close cooperation with the client, the architect and the consultant as well as a detailed understanding of the project requirements, Glassline secures a head start both on the technical and the execution level.

Glassline's extensive international and multi-disciplinary experience in designing building envelopes as well as an in-depth knowledge of industry products & technologies enables us to provide tailor-made solutions that meet the most stringent needs in terms of reliability, safety, cost effectiveness, esthetics and strict compliance to international norms.





PRODUCTION

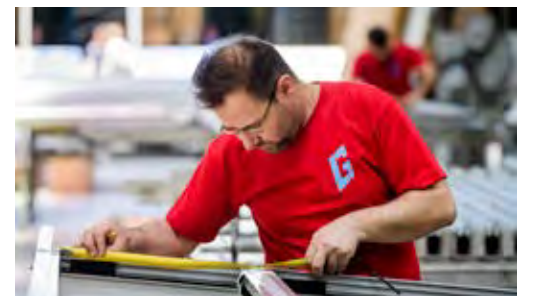
Aluminum

Glassline houses under one roof a full production chain to give our clients access to the widest spectrum of technologies and materials, and cater to the needs of our projects in terms of custom-designed architectural metal works and full-range of glazing systems.

Our in-house production capabilities keep us in full control of time, quality and cost throughout our activities, hence ensuring our commitment to fulfill our clients' satisfaction.

Our aluminum factories in Beirut and Abu Dhabi produce a full range of systems covering: conventional, structurally glazed or unitized curtain walls, sliding & casement doors & windows, architectural metal cladding, aluminum screens, partitions and louvers.

Glassline is the only Quality Bond certified factory in Lebanon for all structural glazing and bonding applications.





Glass

Our Glass factory houses a state of the art production line equipped with automated and advanced machinery from world leading suppliers.

Glassline's architectural glass processes extend from cutting to tempering as well as heat-soak testing and double glazing and produces a wide range of high performance glazing, meeting the project's requirements in terms of aesthetics, thermal and acoustic insulation as well as safety parameters.

Glassline is a certified processor for all AGC, Saint Gobain, Guardian and Glastroesch high performance glass products. Furthermore, our products are CE marked according to EN1279 and EN12150 to meet the latest European legislation.



DPI insufficient (94)



Metal & stainless steel

Our Metal & Stainless Steel workshops produce architectural metal works for skylights, supporting structures for glazing and aluminum systems, tension rod structures, point fixed system and balustrades.



PROJECT MANAGEMENT & EXECUTION

Glassline's Project Management Department employs a team of highly qualified, dynamic and multi-disciplinary engineers with extensive local and international experience in design and execution of complex building envelopes, metallic structures, roofs and skylights.

Our Project Managers attest to the company's culture by nurturing a close and transparent relationship with all project stakeholders, implementing the best practices and overseeing the project's development while focusing on quality, time, cost and client satisfaction.

Glassline's Project Management team's know-how in successfully handling large scale multi-trade projects extends from planning to turnkey implementation.

Thanks to systematic project organization, outstanding technical competence in installation methodologies including detailed erection plans, work instructions as well as safety concepts and comprehensive quality control system, our projects are executed in high quality and in a timely manner.

Through our international experience, we have gained the versatility of fast mobilization in any country where we wish to operate and our synergies in engineering, production, logistics and installation enable us the realization of the most complex projects.











GLASSLINE & THE ENVIRONMENT

Glassline's Environmental Policy is a fundamental part of our Corporate Culture.

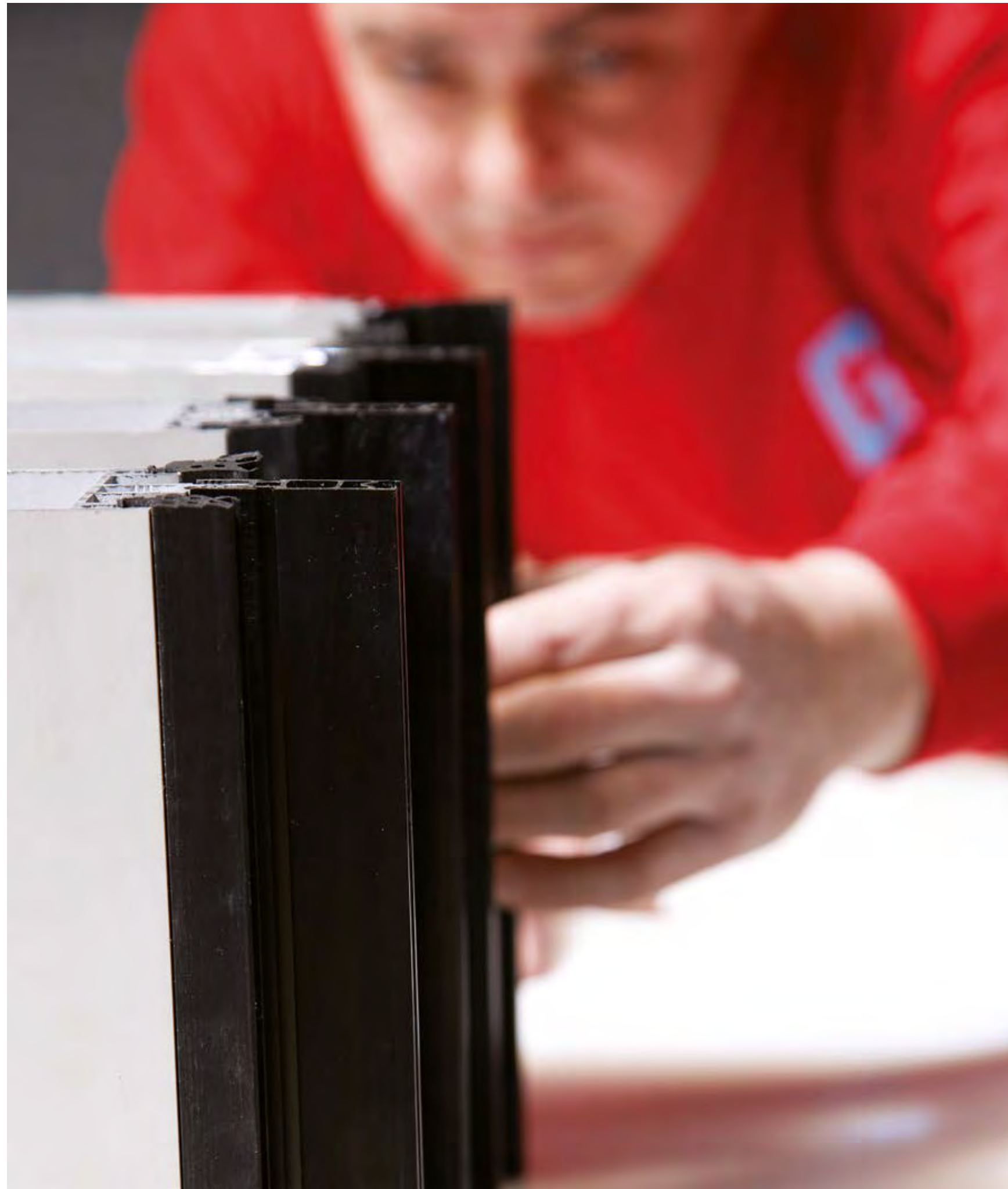


Ecologically conscious, Glassline takes responsibility for the impact of its operational activities, mainly in the field of environmental protection and sustainability.

Opportunities to improve are identified in all our operations as our employees are encouraged to support the implementation of our environmental policy.

Glassline guides and supports its clients achieve their goals of "Green Buildings" through the design and erection of the Intelligent building envelopes. We offer solutions that improve sustainability, evaluate key suppliers according to environmental and economic criteria and analyze Installation methods and maintenance requirements from an environmental perspective.

In our aim to meet technical, economic and environmental requirements, Glassline acts as an active partner in helping towards the achievement of the LEED certification requirements for various projects including M1 Building Lebanon, new Bank MED headquarters, new FNB headquarters and more.



QUALITY & TESTING

Quality pervades every aspect of Glassline's culture and is essential to our commitment to our clients. Constant research and development, continuous improvement, quality control and the implementation of cutting-edge technology are implemented to secure high quality standards.

Glassline's systems undergo stringent tests for weather tightness, seismic movements, building movements, dynamic, impact, acoustics and fire rating. All these tests are carried out by third party accredited laboratories or in the presence of technical control bodies to insure objectivity.

To date, over fifteen tests have been successfully executed. These covered:

- air infiltration ;
- static air pressure water penetration ;
- dynamic air pressure water penetration ;
- differential created by an airplane propeller ;
- wind resistance – serviceability and safety ;
- building movement (seismic) – serviceability ;
- building movement (seismic) – safety ;
- impact test – hard body & soft body ;
- acoustical test.



OUR PARTNERS



Wicon – Reinventing the City

Glassline and Wicon have established a strategic alliance to provide customized solutions answering clients' specific design and engineering requirements. Wicon's technical team is present and hands-on at the execution and supervision stages of all Glassline projects.

Wicon was established in Germany in 1948 and has been successfully active in the market under the umbrella of Sapa, the world leader in aluminum solutions. Wicon, the specialist in technical facades,

develops and markets aluminum systems for facades, doors, windows, sliding systems and shutters, in addition to stainless steel façade systems. Wicon is a pioneer in sustainable and energy neutral buildings, using technologies which allow savings in energy consumption, reduction in costs and better quality of life. Through its extensive research and development and its modern testing center in Ulm, the company develops innovative, technical systems in full accordance with the strictest European norms.



Wicon Headquarters in Ulm-Germany



Copenhagen Tower © Saint-Gobain, Photographer: Olaf Rohl Aachen.



520 West 28, Manhattan, New York – Designed by Zaha Hadid © Hayes Davidson



OUR PARTNERS

V I T R O C S A

VITROCSA – Minimalist Window

Glassline are Vitrocsa's sole representatives in Lebanon, Oman, Jordan, KSA, United Arab Emirates, Kuwait, Bahrain, Qatar, Turkmenistan, Iraq and Cyprus.

Developed in 1993 by Orchidées Constructions SA, Vitrocsa's minimalistic profiles are the result of a passion for architecture, rigorous research and development, testing and patented certifications.

Vitrocsa has revolutionized the conventional principles behind window construction by making the frameless glass take on the load-bearing role formerly assumed by the frame. The Vitrocsa system has a vast range of possible combinations offering an infinite range of versions and solutions tailored to customers' specific needs: sliding system, curved version, pivoting structure, invisible frame, guillotine, turnable corner, etc.

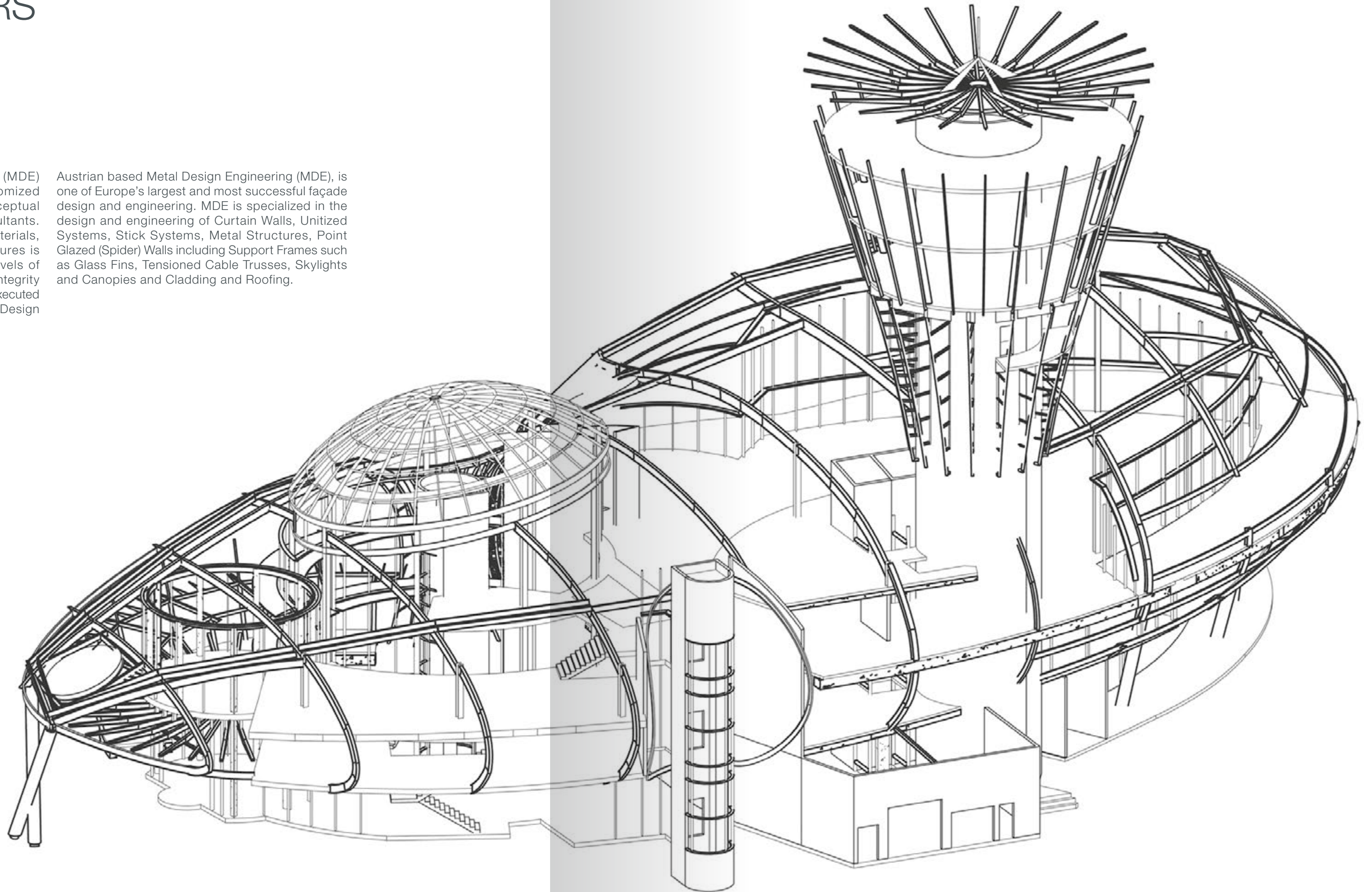
OUR PARTNERS



MDE – Design Detail

Glassline and Metal Design Engineering (MDE) structural engineers work jointly on customized engineering solutions answering the conceptual design challenges of architects and consultants. Through latest innovative systems and materials, “dematerialization” of façades and structures is achieved, thus allowing for the highest levels of transparency while ensuring the structural integrity and providing sustainable solutions. Projects executed with MDE benefit from MDE’s Professional Design Liability Insurance.

Austrian based Metal Design Engineering (MDE), is one of Europe’s largest and most successful façade design and engineering. MDE is specialized in the design and engineering of Curtain Walls, Unitized Systems, Stick Systems, Metal Structures, Point Glazed (Spider) Walls including Support Frames such as Glass Fins, Tensioned Cable Trusses, Skylights and Canopies and Cladding and Roofing.



OUR PARTNERS



LANIK – Turnkey Solutions

Glassline and LANIK have recently created a partnership for the execution of Single-layer or Transparent Structures. These structures allow architects and engineers to design authentic “shells”, with total absence of structural elements, decreasing its thickness, making it look like it is defying the laws of physics.

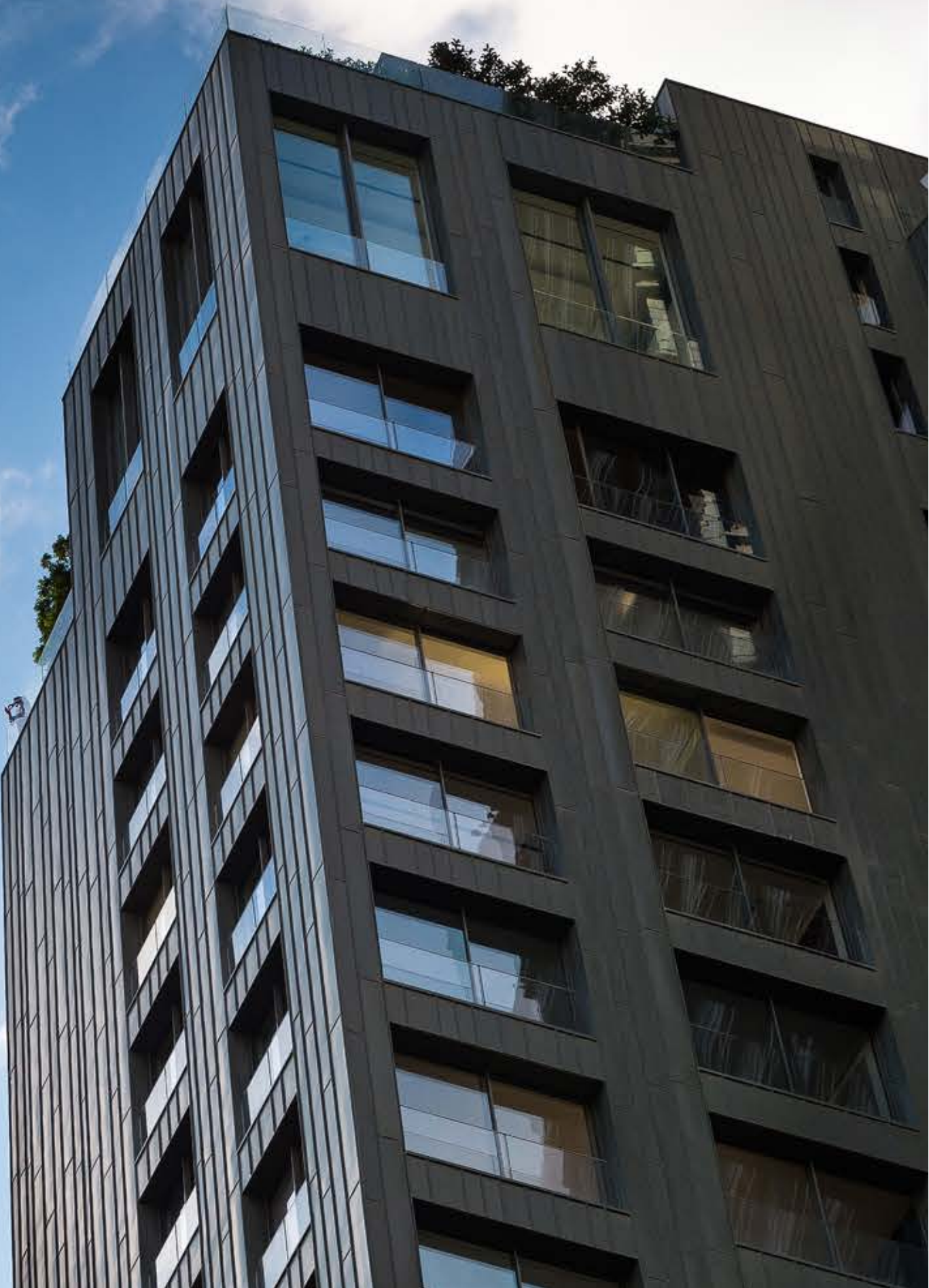
Since 1977, LANIK offers its own designed structural solutions in terms of single layer structures, space frames & retractable roofs with special considerations

to manufacturing and assembly methodology. Through its in-house developed CAD system, LANIK generates an optimal geometry for each project, then a mathematical modeling to perform structural analysis verifying the individual elements of the designed structure.

LANIK's CAM system is network-connected to its CNC machines at their production facilities, allowing thus for the design and Manufacturing to be seamlessly integrated.



ONE TOWER	40
DEMCO TOWERS	42
SKY GATE	44
ABDEL WAHAB 618	46
FORTY FOUR	48
VOLANTE	50
THE STERLING	54
LA CITADELLE	56
20 30	58
FORUM EL DJAZAIR	60
B11 - ROTANA RESIDENCE	62



ONE TOWER

LIMASSOL | CYPRUS

The project

Situated on the south coast of Cyprus along the shores of the Mediterranean, this 36-story tower is the most prestigious real estate project in Cyprus and the tallest residential seafront building in Europe, occupying a prominent beach front location in Limassol.

Scope of work

Complex Design & structural calculation to accommodate for the simultaneous multi-directional building movement resulting from differential settlement, seismic movements, wind load and expansion.

- 5'500 m² of minimalistic slim profile curtain wall with incorporated Vitrocsa sliding facades;
- 4'200 m² of regular curtain wall with top hung windows;
- 10'000 m² of Glass Reinforced Concrete-GRC cladding, including flat panels up to 4.2 m height and bullnose panels;
- 2'200 m² weathertight double layers of single curved and double curved GRC panels at the crown area;
- 3'200 m² of aluminum tubular louvers;
- 1'500 m² of GRC louvers;
- Double height retail glazing with glass fins and steel columns;
- Stainless steel wire mesh.





DEMCO TOWERS

BEIRUT | LEBANON

The project

Rising 100 meters high on the Metn coastline, Demco Towers consist of a 30-floor high-rise residential tower, a 20-floor commercial tower and a mall building.

Scope of work

18'000 m² of unitized and stick system curtain wall and doors and windows.

SKY GATE

BEIRUT | LEBANON

The project

Skygate is a prestigious high rise residential tower, located in the heart of Beirut city.

The project consists of six basements, two upper level floors serving as retail spaces and 42 superstructure floors forming the Tower.

Scope of work

- 8'300 m² of customized aluminum curtain walls with built-in tilt & slide structurally glazed doors and windows ;
- 2'350 m² of U-glass louvers ;
- 800 m² of point fixed & frameless facades.



DEVELOPER
MENA Capital s.a.l.

ARCHITECT
nabil gholam architects

FAÇADE CONSULTANT
Priedemann

CONTRACTOR
MAN Enterprise s.a.l.

RESIDENTIAL TOWERS
& COMPLEXES





ABDEL WAHAB 618

BEIRUT | LEBANON

The project

Located in Ashrafieh, this five-building residence is comprised of two high-rise towers and three low-rise buildings.

Scope of work

- 15'000 m² of Aluminum doors in thermally broken aluminum system ;
- 15'000 lm of metal edge of slab design cladding, aluminum balustrades and skylights.

FORTY FOUR

BEIRUT | LEBANON

The project

Rising 44 floors above the city skyline and located in the heart of Beirut, Forty Four is Lebanon's second highest tower and a new landmark in the country.

Scope of work

- 23'500 m² of Unitized curtain wall with 800 integrated concealed push out windows ;
- 2'000 m² of Stick System curtain wall ;
- 1'600 lm glazed balustrades.





VOLANTE

DUBAI | UAE

The project

Volante is a 36-story residential tower, located in the water front business bay, facing the monumental Khalifah tower in Dubai.

Scope of work

10'000 m² of curtain wall, doors & windows, entrance lobby glazing, composite cladding and balustrade works.



Vitrocsa motorized sliding minimalistic Facade, with an overall opening of 9.5 m width and 6.6 m height, providing breathtaking views of Dubai Skyline.

GLASSLINE... SHAPING CITIES' SKYLINES

BEIRUT | LEBANON





THE STERLING

Dubai | UAE

The project

The Sterling is located near the Dubai International Financial Centre (DIFC), the Trade Centre, and just a couple of minutes away from The Dubai Mall. It comprises two towers: The East House and The West House, and offers fantastic views of Burj Khalifa, Mohammed Bin Rashid City and The Creek.

Scope of work

28'000 m² of Facades Works comprising curtain walls, Lift & Slide facades, balustrades, performance and decorative Louvers, along with bespoke design vertical features on the main Facades, extending from the ground floor to the roof.

LA CITADELLE

BEIRUT | LEBANON

The project

La Citadelle is a 34-story high-rise luxurious tower located in the hotel district, towering over downtown Beirut and its marina.

Scope of work

10'000 m² of tilt and slide aluminum doors and windows, curtain walls and balustrades.



20 | 30

BEIRUT | LEBANON

The project

20 | 30 blends luxury with eco-friendliness. Designed and built in partnership with leading architecture, energy, and engineering firms, 20 | 30 harnesses the latest design and building technologies to create profound expressions of sustainability, function, and beauty.

Scope of work

- 4'000 m² of Vitrocsa minimalistic facades with high performance low iron glazing ;
- Low Iron balustrades.



FORUM EL DJAZAIR

ALGER | ALGERIA

The project

A mixed used development consisting of 4 zones divided into 4 residential towers of 24 stories each, commercial spaces, luxury villas and a hotel.

Scope of work

Design, engineering, fabrication, supply and installation of zones 1 & 3 of the project consisting of 4 high rise residential towers and villas, including :

- 22'000 m² of doors and windows ;
- 22'000 m² of Curtain Walls ;
- Pergolas and decorative aluminum mushrabiya.





B11 - ROTANA RESIDENCE

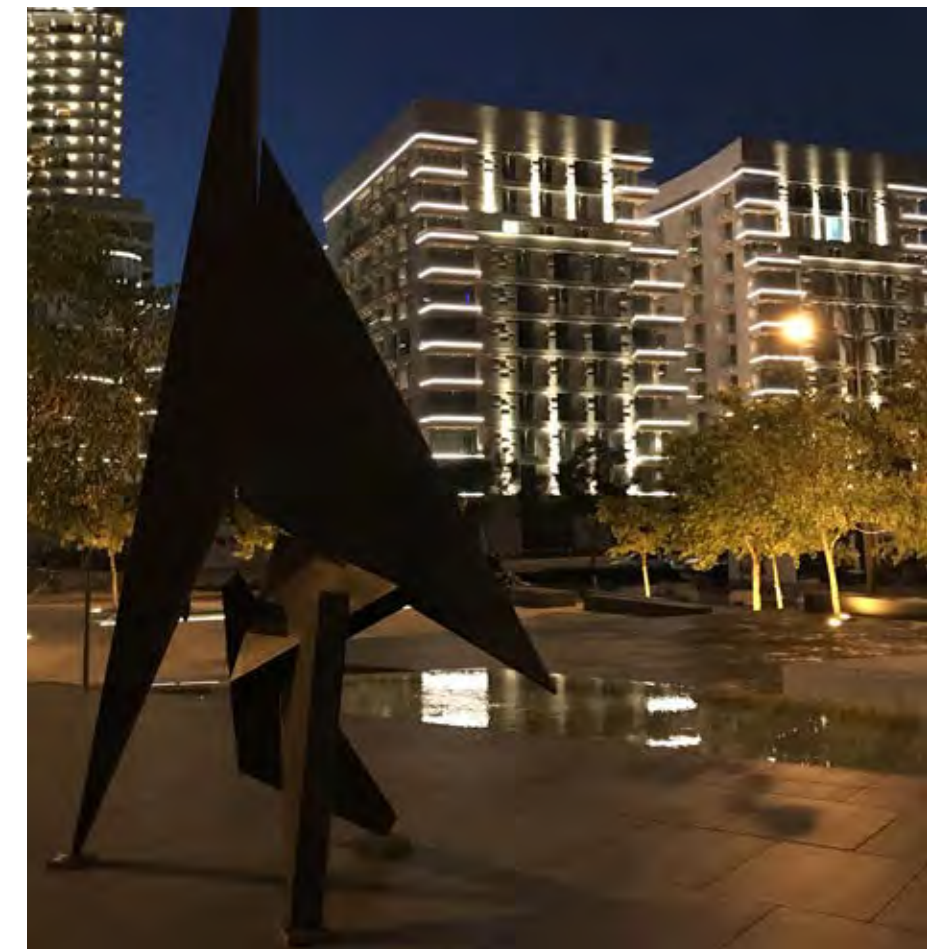
BEIRUT | LEBANON

The project

Situated in the heart of Beirut Central District, B11 features two medium-rise & two low-rise buildings of modern apartments. Coupling curved and neat architecture, B11 stands as a contemporary structure that balances aesthetic and iconic design with functionality.

Scope of work

- 3'800 m² of doors and windows with concealed frames and locking stiles ;
- 1'200 m² of frameless facades with curved glass ;
- Fire rated aluminum glazed doors ;
- Vitrocsa minimalistic facades.



LARNACA INTERNATIONAL AIRPORT	66
FIRS CORPORATE HEADQUARTERS	68
KING HUSSEIN CANCER CENTER	70
CLEMENCEAU MEDICAL CENTER	74
MULTI PURPOSE ADMINISTRATIVE COMPLEX	76
KUWAIT NATIONAL LIBRARY	80
LEBANESE NATIONAL LIBRARY	82



LARNACA INTERNATIONAL AIRPORT

LARNACA | CYPRUS



The project

Built over an area of 100'000 m², the Larnaca International Airport is a USD 1 billion BOT project that developed the airport through the construction of a new passenger terminal.

Scope of work

- 20'000 m² of curtain wall systems, skylights, louvers, aircraft boarding bridges with insulated cladding ;
- 300 tons of metal work for the canopies, partitions, and balustrades ;
- Seismic calculations for all façades to accommodate the differential movement.

PUBLIC
PROJECTS

CONTRACTOR
**Bouygues Batiment
International**

CONSULTANT
Meinhardt

ARCHITECT
**Pascall + Watson /
J+A Philippou**

DEVELOPER
Hermes Airports LTD



FIRS CORPORATE HEADQUARTERS

ABUJA | NIGERIA

The project

The FIRS Headquarters comprises of three office towers on a podium with an area of about 63'000 m².

The project

- 22'000 m² of Unitized curtain wall facades with protruded aluminum sun breakers;
- 6'500 m² of cladding;
- Canopy, entrance point fixed façade, skylight.



KING HUSSEIN CANCER CENTER

AMMAN | JORDAN



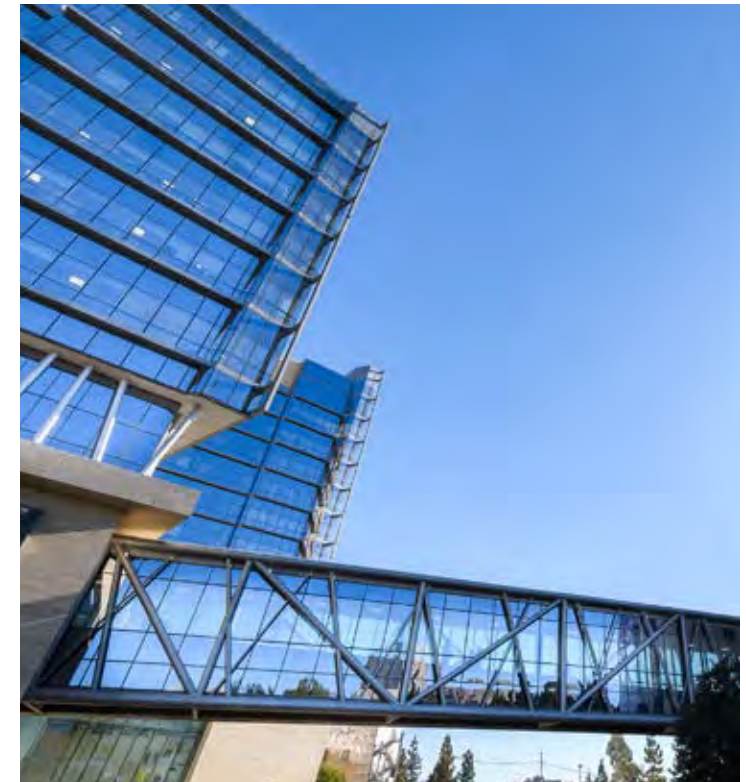


The Project

The new extension of the King Hussein Cancer Foundation and Centre is built to be a life-saving space to cancer patients. The project consists of 182 rooms and is comprised of two towers of 10 and 12 floors sharing the ground floor and three basement floors, with an approximate total built-up area of 84'360 m².

Our scope

- 13'500 m² of Unitized curtain wall with steel horizontal sunshades ;
- 1'000 m² of inclined stick curtain wall ;
- 2'300 m² of Aluminum louvers, Doors & Windows.



CLEMENCEAU MEDICAL CENTER

AMMAN | JORDAN

The Project

The Clemenceau Medical Center is a 125 metres' tall up-scale medical center tower, located in the district of Al-Abdali, in Amman, Jordan. It is part of Abdali Project. The clinic, an affiliate of Johns Hopkins Hospital, will accommodate 200 beds.

Our Scope

- 21'000 m² of unitized curtain wall ;
- 5'000 m² of structural glazed facades with integrated LED lighting ;
- 1'500 m² of composite cladding.



PUBLIC
PROJECTS

CONTRACTOR
ATCCO

CONSULTANT
CC

ARCHITECT
ECOM

DEVELOPER
Abou Ghazaleh Group



MULTI PURPOSE ADMINISTRATIVE COMPLEX

RAS LAFFAN | QATAR



The Project

A multipurpose administration complex project consisting of ; The Offices and Canteen Building, the Medical Center Building in addition to 2 substations.

Our Scope

28'000 m² of unitized and stick system curtain walls, with 300 mm aero foil louvers sun shading system, doors and windows, skylights, canopies and cladding.



DEVELOPER
RLEP-Ras Laffan Expansion
Port Committee

ARCHITECT
Leigh & Orange –
Hong Kong

CONSULTANT
Qatar Petroleum

CONTRACTOR
Consolidated
Contractors Co

MULTI PURPOSE
ADMINISTRATIVE COMPLEX

PUBLIC
PROJECTS





KUWAIT NATIONAL LIBRARY

KUWAIT CITY | KUWAIT

The project

The Kuwait National library boasts one of the largest façade projects in the country. The project was awarded to Glassline, who competed for it among a number of companies from Europe and the Gulf.

Scope of work

- 8'500 m² of double skin curtain wall with point-fixed façades ;
- Stainless steel wire mesh panels incorporated in the high performance, double glazed units, providing further shading while improving the esthetics of the façades.



LEBANESE NATIONAL LIBRARY

BEIRUT | LEBANON

CONTRACTOR
A.R. Hourie Enterprises

CONSULTANT
Erga group

CLIENT
Ministry of Culture



The project

The project, donated by the State of Qatar, consists of the complete construction and renovation of the National Library of Lebanon.

Scope of work

Concept-Design, engineering, fabrication and erection of the reading hall and two glass boxes: structures which are independent of the adjacent existing buildings, and are able to absorb their own seismic displacements.

- The main façade and glazed roofing of the reading hall consisting of a metal structure and acoustic point fixed façade;
- Two glass boxes at the sides of the building acting as elevator cage and staircase.





YAS ISLAND - YACHT CLUB	88
SHEIKH JABER AL AHMAD CULTURAL CENTER	92
KUWAIT INTERNATIONAL TENNIS COMPLEX	98
SEERO FI AL-ARDH CAROUSEL	102
SKY VENTURE	106
ALDAR CANOPY	108
ROYAL JORDANIAN HEADQUARTERS	110
AISHTI FOUNDATION	112
LUSAIL SPORTS ARENA	116

YAS ISLAND - YACHT CLUB

ABU DHABI | UAE



The project

The prestigious world class, six stars Race Track Marina Yacht Club is located on Yas Island. The area is immediately adjacent to the race track and is bound on three sides by water.

The two buildings of the Yacht Club have an oyster-like design with hard shell roofing that wraps over the building and acts as a canopy giving further protection from the sun.

Scope of work

- Complex Design and Engineering of the main envelope, done by the joint teams of Glassline and MDE.
- Execution of this fast-track project, finalized in 7 months, consisting of:
 - > 600 tons of volumetric shaped steel structure ;
 - > 18'000 m² of glazed façades, curtain walls and composite panel cladding ;
 - > 6'000 m² of roofing systems.



DEVELOPER
ALDAR

ARCHITECT
O1A Omiros One Architecture

CONSULTANT
O1A Omiros One Architecture

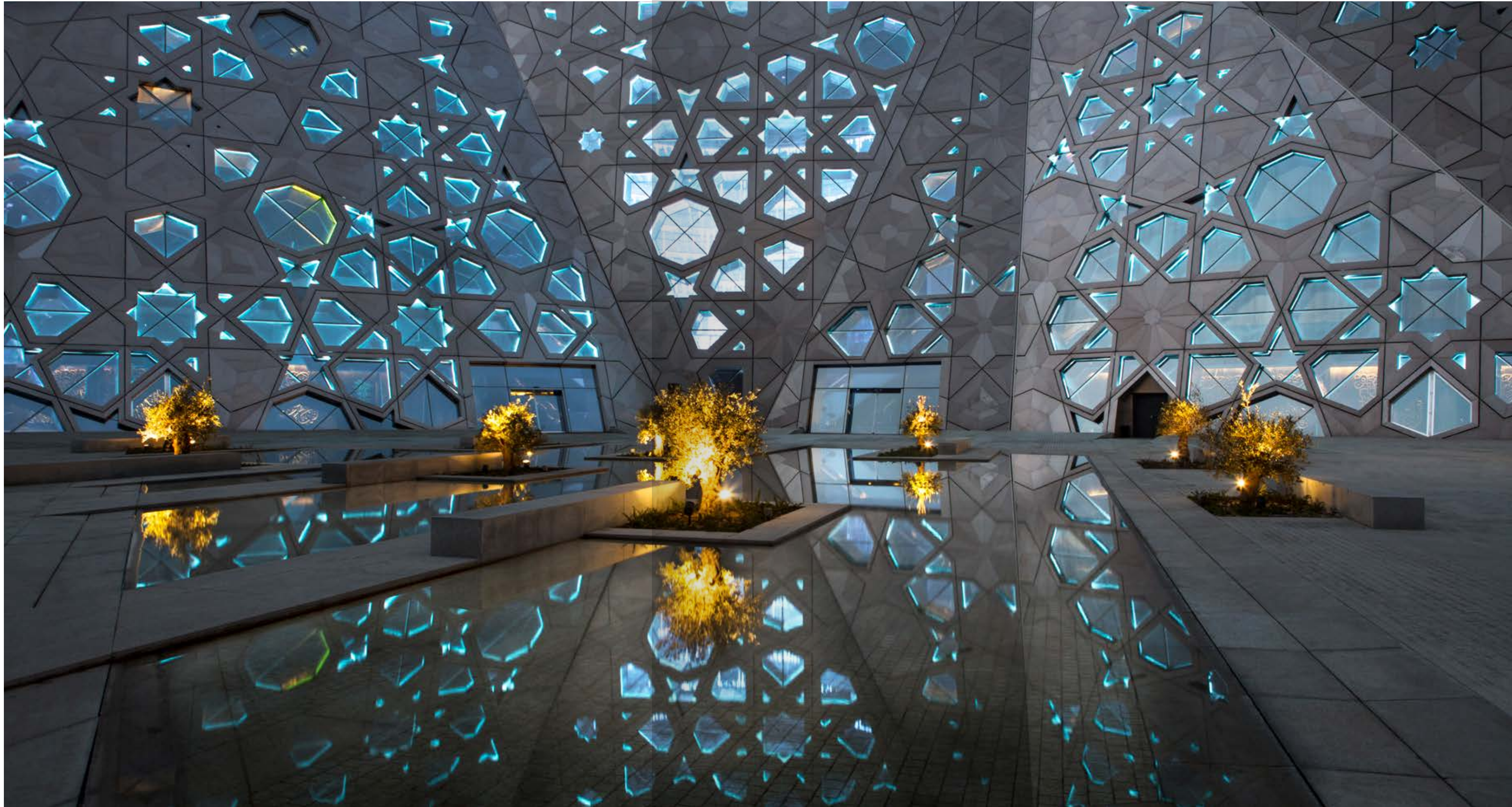
CONTRACTOR
Cebarco – WCT

YAS ISLAND
– YACHT CLUB
SPECIAL
STRUCTURES



SHEIKH JABER AL AHMAD CULTURAL CENTER

KUWAIT CITY | KUWAIT





The project

The Sheikh Jaber Al-Ahmed Cultural Centre is a multidisciplinary public space owned by the Amiri Diwan striving to entertain, educate and inspire the people of Kuwait. It offers a range of events –music, theatre, film and workshops– for every generation and sector of society.

Scope of work

12'000 m² of structural glazing covering :

- Theater Building :
 - > 6-meter-high façades with frameless Rice Paper Glass Screens and supporting triple laminated 0.3 x 4 meters slim fins structure ;
 - > Fully Cladded Escalators with Rice paper Glass Panels.
- Music Building :
 - > 17-meter-high Frameless Calligraphy Glass Screens and supporting triple laminated 0.55 x 4 m fins structure ;
 - > Fully Glazed point fixed Glass Box of 21 meters Height and 18 meters side length including oversized glass fins.
- Conference Building :
 - > 12.5-meter-high facades with Frameless oversized glass screens ;
 - > 200 Tons of Steel.





KUWAIT INTERNATIONAL TENNIS COMPLEX

KUWAIT CITY | KUWAIT

OWNER CONSULTANT
Oha Engineering Consultant

DESIGN ARCHITECT
Callison RTKL

OWNER
**Spirit Real Estate
Development Co.**

CONTRACTOR
**Ahmadiyah Contracting
& Trading Co.**

DESIGN CONSULTANT
**Pan Arab
Consulting Engineers**

OWNER REP
Tamdeen Shopping Centers





The project

The goal of Kuwait International Tennis Complex is to become a premier sports, leisure, and entertainment destination in the Middle East. The Tennis Center will be complimented with a 250-room key hotel, F&B venues, and vibrant retail offerings.

Scope of work

- Skylight :
- 13'000 m² of single layer space frame skylight with very high performance gradient screen printed glazing, to be erected in partnership with Lanik-Spain.
- Hotel :
 - > 9'500 m² of unitized curtain wall ;
 - > 2'000 m² of point fixed facades, skylights and internal glazing.
 - Mall :
 - > 2'000 m² of U-glass external façades ;
 - > 4'000 m² of internal and external curtain walls ;
 - > 2'000 m² of point fixed facades ;
 - > 1'100 m² of decorative glass ;
 - > 1'000 m² of canopies.

SEERO FI AL-ARDH CAROUSEL

DOHA | QATAR

The project

The carousel is a work of art created by the famous artist M. F. Husain, with the final design done by EMA – Eric Maria & Associates. The structure, with a diameter of 45m at a height of 12 m, is located in the Qatar Foundation Education City adjacent to the Horse Racing Academy in Al Shaqab.

Scope of work

Complete structure and envelope of the carousel consisting of:

- 750 Tons of circular steel Structure spanning over 48 meters and erected over 4 pillars ;
- 2'000 m² of glazed acoustic roofing ;
- 6 independently operated curved units of double skin façade covering a full radial opening of 72 meters, each 12 meters wide and 8 meters high, weighing 13 tons.

CONTRACTOR
Strabag Qatar W.L.L.

CONSULTANT
**Astad Project
Management**

DEVELOPER
Qatar Foundation







SKY VENTURE

YAS ISLAND | ABU DHABI

The project

Sky Venture is an exciting new venture designed to serve two main amusement activities : artificial wall climbing and indoor skydiving. The facility will be built beside the Ferrari World on Yas Island, Abu Dhabi. Aside the main amusement attractions, the building contains offices, supporting services, retail shop, party rooms and two F&B outlets.

Scope of work

- 800 Tons of custom designed steel structure composed of 68 Triangular shape mega size panels connected with articulated Nods ;
- 7'000 m² of cladding with Fire Rate insulated composite sandwich panels and aluminum composite panels tested to NFPA-285 ;
- 6'000 m² of Non-insulated FR A2 Triangular cladding panels in aluminum, perforated sheets and glazing ;
- 1'500 m² of Glass fin structure, perforated cladding panels and smoke vents for MEP areas.

ALDAR CANOPY

ABU DHABI | UAE

The Project

With its distinctive circular shape, Aldar Headquarters is recognized as one of the finest pieces of modern architecture in the Gulf region. Developed in line with the US Green Building Council LEED rating system, it provides uninterrupted views of the Abu Dhabi coastline through fully glazed facades.

Our Scope

3-dimensional canopy structure at the entrance of the Headquarters, consisting of:

- 70 tons of shaped metal structure, with 20 inch pipes;
- 850 m² of molded aluminum sheeting with sheets of lengths up to 7 meters.

CONSULTANT
Arup façade engineering - London

ARCHITECT
MZ Architects

DEVELOPER
ALDAR





ROYAL JORDANIAN HEADQUARTERS

AMMAN | JORDAN

The Project

A landmark corporate headquarters with a unique architectural design resembling the smooth aerodynamics of a plane.

Our Scope

Inclined and oblique façades covering :

- 15'000 m² of curtain walls, doors and windows, corrugated sheets, and glass and aluminum louvers ;
- Inclined curved glazing at the building corners ;
- Glazed atrium skylight.

AISHTI FOUNDATION

BEIRUT | LEBANON



The project

Aishti Foundation, the luxury retail group’s latest venture, is a pioneering project. With its hundreds of contemporary art pieces, it is the first of its kind in Lebanon and an important milestone for the future of contemporary art in the region.

Scope of work

- The inner skin of the multilayered façade, including 6 meters high oversized glass panels on the Ground Floor level ;
- A custom designed inverted Curtain Wall, with glazing from the inside and without horizontal transoms on the North Elevation ;
- Skylight at the roof level.



LUSAIL SPORTS ARENA

LUSAIL | QATAR

The project

The new sports complex hosted the world championship of Handball in December 2014. The project has a total area of 107'650 m² and includes a 60'000 spectators play field, VIP & VVIP area, concourses medical center, F&B and sports commodities and facilities.

Scope of work

- 26'000 m² of aluminum, glazing and cladding works covering :
- External curtain wall facades, Point fixed facades, Architectural / Sand trap louvers and cladding works ;
 - Internal shop front facades, offices partitions, cladding works, elevators enclosures and custom made solution to acoustic facades and partitions in the VIP area.



DEVELOPER
Qatar Olympic
Committee

ARCHITECT
Cox Richardson/Dar al
Handassah-Shair & Partners

CONSULTANT
Astad Project
Management

CONTRACTOR
Consolidated Contractors
Company

SPECIAL
STRUCTURES





M1 BUILDING	120
HOLCOM HEADQUARTERS	128
ABDALI GATEWAY	132
CMA CGM HEADQUARTERS	134
LE BUREAU	138
BANK MED HEADQUARTERS	140
STARCO RENOVATION PROJECT	142
FNB HEADQUARTERS	144
RIVE GAUCHE TOWER	148
SEQUOIA	148
51@BUSINESS BAY	160

M1 BUILDING

BEIRUT | LEBANON



The project

M1 Building, is a landmark mixed used project located in Beirut Central District, with a total of 33'200 m² built up area, distributed in 5 basements and 12 floors above ground level.

The project is equipped with state of the art energy-efficient equipment and Building Management System (BMS) to achieve high energy saving levels, as well as a superior IT backbone to cater the requirements of modern professional working environment.

The building is the first project to be Leed Core & Shell Gold certified in Lebanon.

Scope of work

- 5'600 m² of open joints aluminum curtain wall with High Performance Gradient Ceramic fritted low iron glass ;
- 5'200 m² of custom design bolted façades ;
- 19 tubular glazed metal bridges with a total area of 1'115 m², linking the buildings ;
- Bullet Proof curtain wall on the upper VIP floors ;
- Internal partitions and Glazed balustrades.

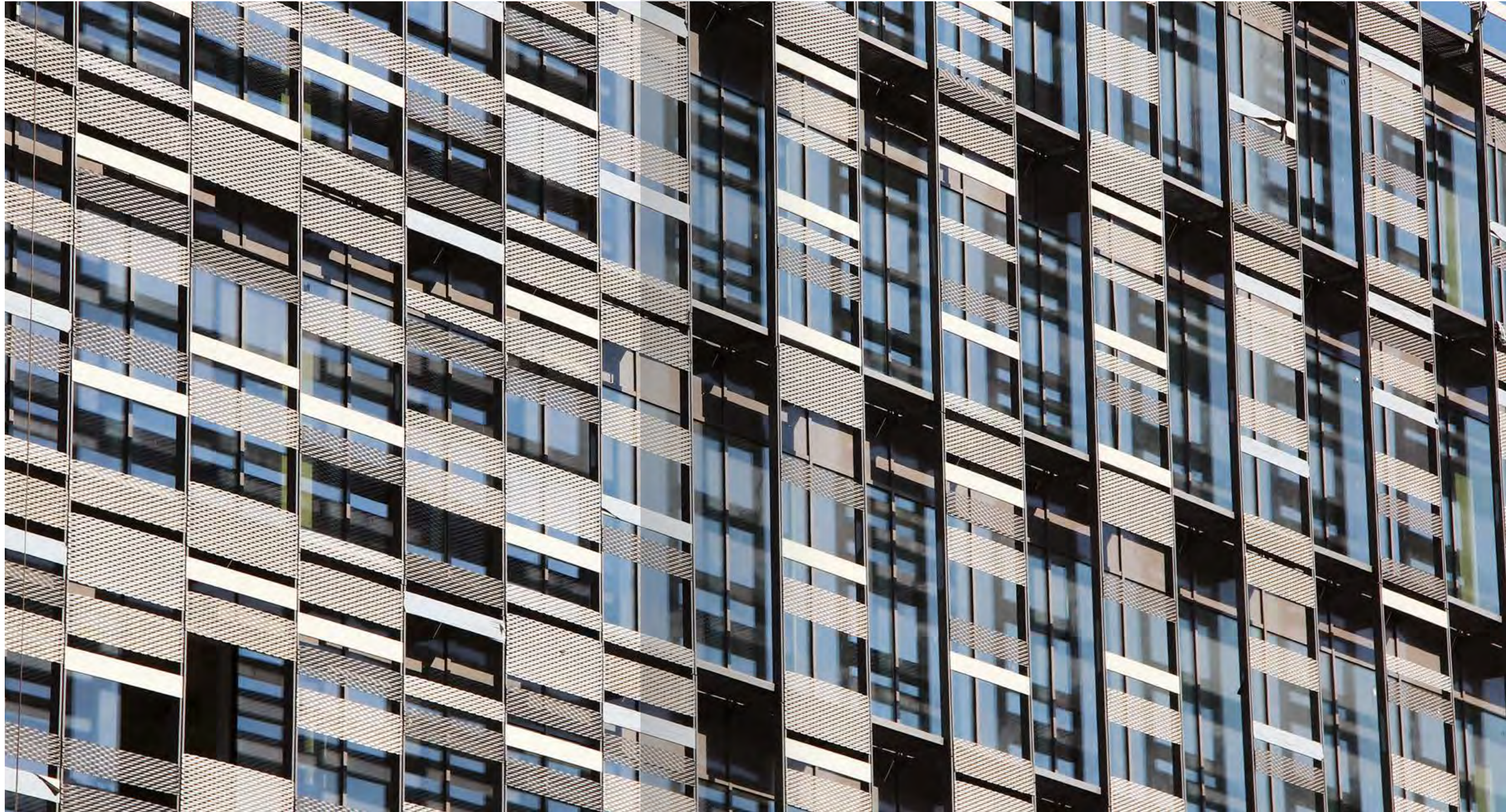






HOLCOM HEADQUARTERS

BEIRUT | LEBANON





The project

The new headquarters of Holcom Group is a large building of 7 floors above ground, enhanced by precise measures that optimize comfort, flexibility, use of interior space, noise control and energy efficiency.

Scope of work

- Design and erection of 5'000 m² of double skin facade consisting of :
- Internal skin, in thermally broken curtain wall system ;
 - External decorative unitized skin, made of vertical bands comprising grids of aluminum sheeting, corrugated sheeting and louvers with mirror finish composite cladding. The outer skin is placed at different heights, to modulate the reflection of light to the inside, and to provide an efficient thermal and acoustic insulation ;
 - A catwalk of corrugated grating in between the two skins ;
 - Oversize panels for the VEC system curtain wall at the roof ;
 - Aluzinc corrugated sheet cladding at the lower levels.

DEVELOPER
HOLCOM Group

ARCHITECT
Atelier des Architectes Associés

LEAD DESIGN CONSULTANT
Lombardini 22

CONTRACTOR
Abniah

HOLCOM
HEADQUARTERS

OFFICE
BUILDINGS





ABDALI GATEWAY

AMMAN | JORDAN

The Project

Located at the heart of Amman, at the entrance of the new Abdali development, the Abdali Gateway is tower made of pixelated glass and translucent marble façade that provide a refined envelope.

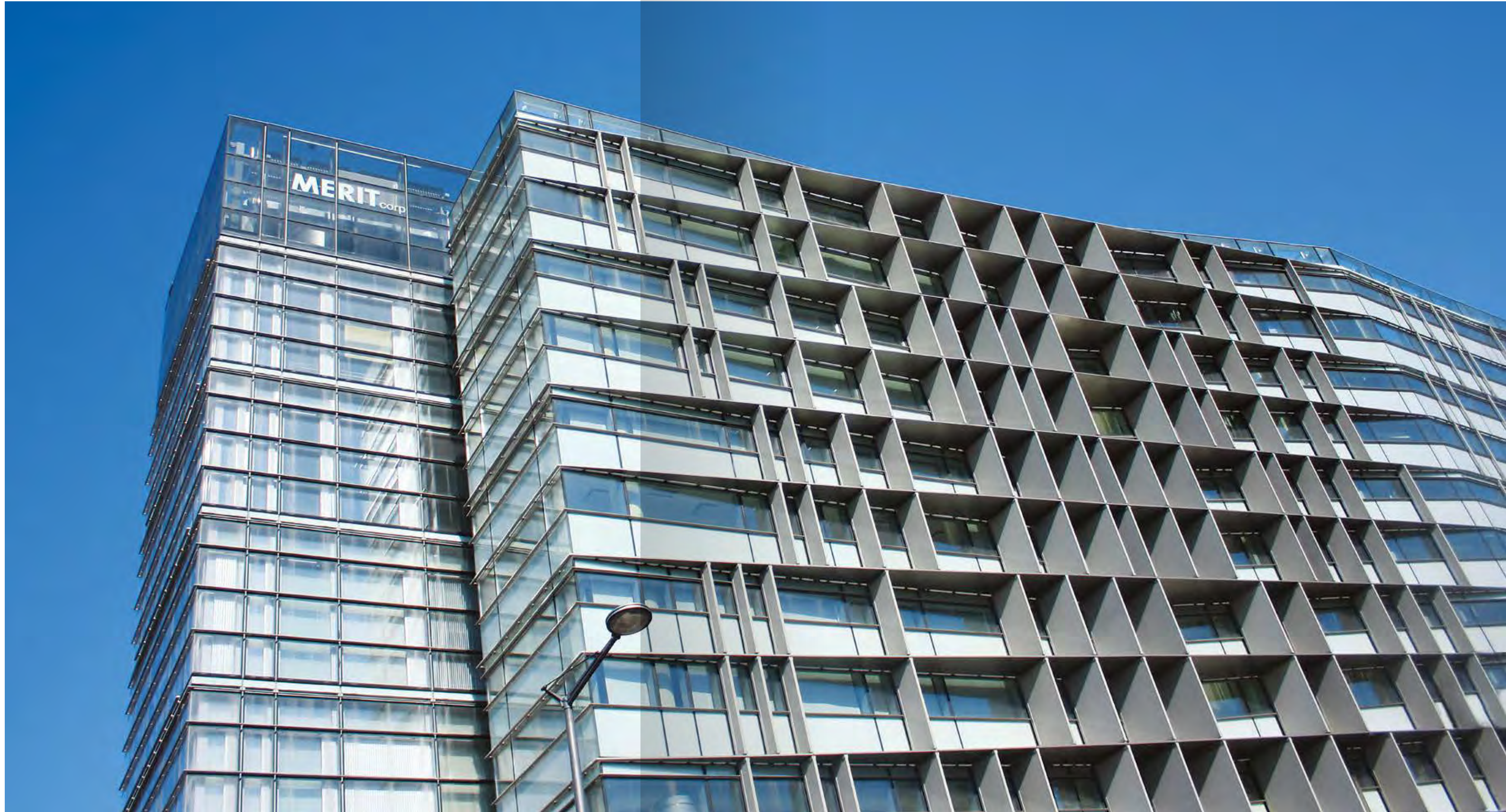
Our Scope

- 12'000 m² of unitized curtain walls with stone laminated double glazing ;
- 2'000 m² of Stick System curtain wall ;
- 1'600 lm glazed balustrades ;
- 3'700 m² of louvers ;
- 1'100 lm of decorative canopies with LED lighting contouring the building ;
- 5'000 m² of composite cladding.



CMA CGM HEADQUARTERS

BEIRUT CENTRAL DISTRICT | LEBANON





The project

The headquarters of CMA-CGM building consists of three glass prisms, intersected by a full height atrium.

Scope of work

- Design and building of the first double skin unitized system executed in Lebanon, with aluminum motorized sun blinds between the two skins, allowing for natural ventilation ;
- More than 800 horizontal stainless steel fins and vertical honeycomb fins with natural stone, protruding from the aluminum façade ;
- Single skin thermally broken unitized system ;
- Entrance canopy, skylight, interior partition and curtain wall, interior waterfall ;
- Stringent weather-tightness tests were carried out on the façade at Bodycote, the third party accredited laboratories.

DEVELOPER
**Merit Real Estate/
CMA CGM**

ARCHITECT
**nabil gholam
architects**

FAÇADE CONSULTANT
**Arup façade engineering -
London**

CONTRACTOR
**A.R. Hourie
Entreprises**

CMA CGM
HEADQUARTERS

OFFICE
BUILDINGS





LE BUREAU

BEIRUT | LEBANON

The project

Strategically located in Mathaf area, Le Bureau is a mid-rise office building.

Scope of work

9'000 m² of curtain wall and 3'000 lm of horizontal and vertical protruding aluminum sunshades.



BANK MED HEADQUARTERS

BEIRUT | LEBANON

The project

Bank Med headquarters lies at the intersection of two of Beirut's major vehicular arteries, and is an extension of the bank constellation of downtown Beirut.

The building form includes increased verticality mixed with a layered/sculpted scheme: the primary vertical fins made of extruded aluminum profiles emphasize the verticality while the secondary fins, which integrate expanded mesh in copper finish, bring varying depths and orientation to the facade exposure to the sun.

Scope of work

- 8'000 m² of unitized curtain walls with external aluminum fins and glass louvers with inserted aluminum mesh;
- 1'000 m² of structural glazed façade;
- 4'000 m² of cladding;
- 2'600 m² of aluminum fins;
- 12 m length glazed entrance façade with glass fins and stainless-steel canopy.





STARCO RENOVATION PROJECT

BEIRUT CENTRAL DISTRICT | LEBANON



The Project

Originally built in the 1960's, the Façade Renovation of the Starco Building was part of the plan set forward by the owners, aiming to refurbishing it into a high-end mixed-use office and retail center, composed of three buildings and a large podium.

Our scope

Design, fabrication and execution of façade cladding and internal civil works, covering :

- 4'700 m² of concealed aluminum window system and glazing works, replacing the previously installed steel frames, while maintaining the aesthetical look of the façade. High performance acoustical low-iron glazing was used to insure maximum comfort to the tenants ;
- 4'875 m² of nano glass stone cladding, hung on special mechanical rail fixations, insuring a flush surface between the cladding and the aluminum works ;
- Internal civil works.

The whole project was carried out while the building and offices were fully operational, in full coordination with tenants and building management, during night shift.

FNB HEADQUARTERS

BEIRUT | LEBANON

Scope of work

- 5'000 m² of curtain wall reinforced facades supporting the decorative GRC secondary skin ;
- Customized stainless-steel bracketing system protruding from the façade to support the GRC system ;
- 1'000 m² of bolted facades for the staircase ;
- Bullet Proof anti-vandalism façades ;
- Fire rate façade.

CONTRACTOR
A.R. Hourie Entreprises

ARCHITECT
Raéd Abillama Architects

PROJECT MANAGER
DG Jones & Partners

CLIENT
First National Bank





RIVE GAUCHE TOWER

BEIRUT | LEBANON



The Project

The project consists of 5 basements and a 30-story high rise tower on a 3'000 m² land footprint, with a total built-up area of 47'000 m².

Our Scope

- 8'000 m² of curtain walls ;
- Point Fixed Facades for the shop fronts ;
- Doors & Windows.



SEQUOIA

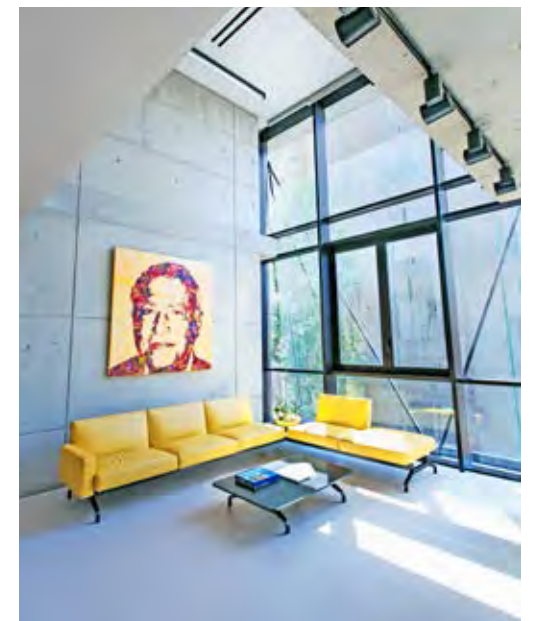
BEIRUT | LEBANON

The project

The project consists of 5 basements and 10 floors. A prestigious office building in the heart of Beirut that hosts Entreprises A.R. Hourie's new headquarters.

Scope of work

- 3'000 m² of doors and windows ;
- 1'200 m² of curtain wall ;
- Louvers, canopies, balustrades and vertical glazed sun breakers.



51@BUSINESS BAY

DUBAI | UAE

The project

Located in Dubai’s Business Bay, Fifty One @ Business Bay has three podium levels of parking overlooking the lake and island, and carries an impressive design that fuses functionality, convenience and elegance.

Scope of work

13’500 m² fully capped curtain wall, glass louvers and composite cladding.





AL KOUT MALL	154
THE SPOT	160
ABC VERDUN	164
THE AVENUES MALL - PHASE IV	170
KEMPINSKY SUMMERLAND HOTEL & RESORT	174
LE MALL	176
TAJ MALL	178
SHAZA KEMPINSKY HOTEL	180

AL KOUT MALL

AL FAHAHEEL | KUWAIT







The project

The new Al Kout Mall is designed to the highest international standards in contemporary shopping mall design ensuring a balance of experience and functionality. It offers shoppers easy access, convenience and comfort while delivering unique life enriching experiences.

Scope of work

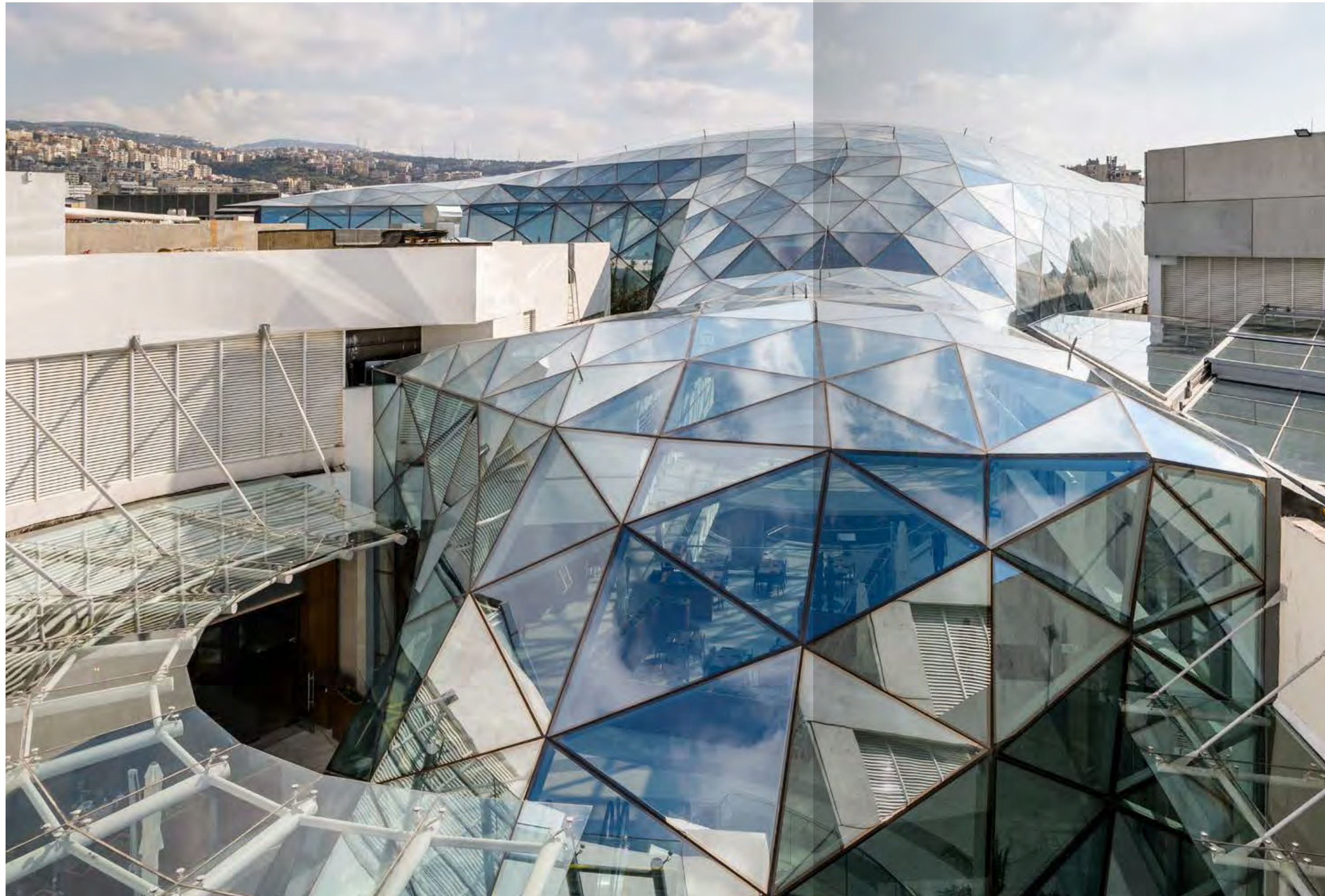
- 10'000 m² of Skylights and Curtain Walls ;
- 1'000 tons of steel works ;
- 4'000 m² of Glazed Frameless Facades ;
- 14'500 lm of Aluminum Fins and Louvers ;
- 2'500 m² of Aluminum Cladding.



THE SPOT

CHOUEIFAT | LEBANON





The Project

The Choueifat Mall includes 46'000 m² of Gross Leasable Area out of its 132'000 m² of total built-up area and hosts numerous retail stores, supermarkets, restaurants as well as a cinema complex.

Scope of work

- 4'000 m² of single layered space frame skylight, the first of its kind to be erected in Lebanon in partnership with Lanik-Spain & Wicona-Germany ;
- 3'500 m² of curtain walls, aluminum and glazing works ;
- Automated retractable roof.



ABC VERDUN

VERDUN | LEBANON





The Project

ABC Verdun Mall is constructed on an 18'000 m² property with over 150'000 m² of built-up. The mall hosts a wide selection of international brands, the ABC department store, entertainment and leisure centers, in addition to garden spaces and parking areas.

Scope of work

Design, 3D modelling, Engineering, Fabrication and Installation of 4 free standing elliptical canopies, with spans reaching 55 x 40 meters, consisting of:

- 1'600 Tons of steel structure with curved customized profile sections ;
- 5'000 m² of hot and cold bent curved glass.

The fabrication and erection of the steel structure was carried out by Messrs. Parissis.

The challenging installation of the canopies, over a void reaching maximums of 18 meters height, was completed 2 months ahead of schedule.





THE AVENUES MALL - PHASE IV

KUWAIT | KUWAIT

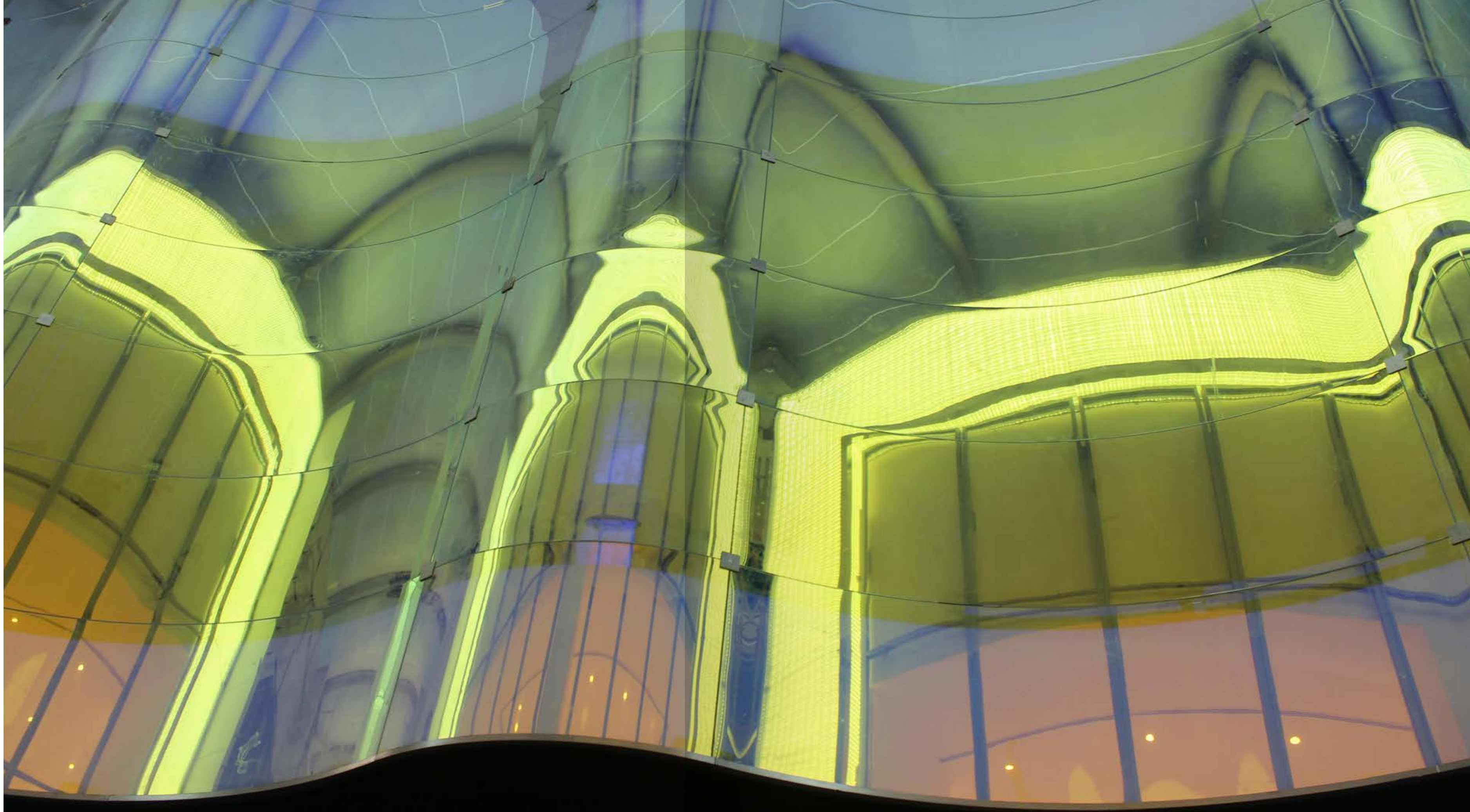
The Project

The extension of the Avenues mall Phase IV I includes expansions of existing districts that have been highly popular with visitors, including Prestige, Grand Avenue and The Souk. The project consists of The Arcades, The Grand Plaza, The Forum, The Gardens, Electra and The Cinema, as well as a five-star hotel and another four-star hotel. Phase IV is built over an area of 117'000 m², with a total leasable area of 95'000 m².

Our Scope

- 10'000 m² of stick curtain wall, doors and windows ;
- 2'000 m² of Special Facades with canopies and stainless-steel supports ;
- 2'500 m² of Frameless facades with Stainless steel accessories and glass Fins.





KEMPINSKY SUMMERLAND HOTEL & RESORT

BEIRUT | LEBANON

The project

Kempinski Summerland Hotel & Resort is the only 5-star luxury beach resort in Lebanon with its own private beach. Facilities include 153 rooms and suites, a labyrinth of pools, water sports facilities, exquisite gardens, lounges and outdoor venues

Scope of work

- 4'100 m² of doors & windows ;
- 700 m² Point Fixed facades with Luxar anti-reflective glass ;
- Stainless steel glazed canopies ;
- Frameless facades, Skylights, Curtain Walls, louvers.

CONTRACTOR
JV Rizzani de Eccher - Matta

CONSULTANT
Samir Khairallah and Partners

ARCHITECT
Winberly Allison Tong & Goo

DEVELOPER
SDC Group





LE MALL

DBAYEH | LEBANON

The project

A shopping center with a distinctive twist, featuring a nine-level rectangular structure and 20'000 m² of leasable area.

Scope of work

The main façade consisting of 70 tons of 3-dimensional metal structure, supporting a 20-ton secondary stainless steel structure consisting of trusses with tension cables, which hold the 1'500 m² of tempered laminated segmented glass facade.

A 500 m² skylight, with a support steel structure.



TAJ MALL

AMMAN | JORDAN

The project

Taj Mall is an urban 21st century citadel with contemporary glass and metal railings and awnings, conveying the ancient stone in an urban context.

Scope of work

- 11'000 m² of curtain wall and windows system ;
- 300 tons of steel structure for skylights and canopies ;
- Point-fixed façades, partitions, glazed balustrades, stainless steel and aluminum cladding.



SHAZA KEMPINSKY HOTEL

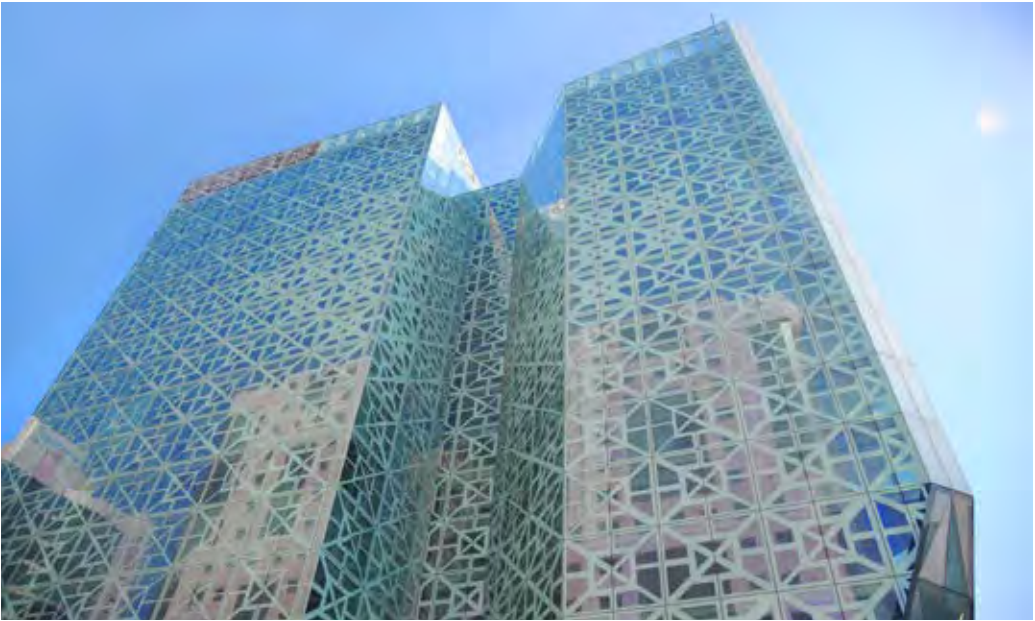
DOHA | QATAR

The project

Positioned on a crossroad between the Museum of Islamic Art and the new National Museum in Qatar’s cultural district, the 20-storey hotel has a design signature through its unique facade that gives it a regional identity, with its culturally charged motif inspired by the traditional mashrabiya pattern.

Scope of work

- 19'000 m² of unitized curtain walls in full height glazing screen printed with mashrabieh pattern ;
- Custom designed outward inclined façade in triple volume ;
- Glazed minimalistic design canopy.



SHOPPING AND
LEISURE CENTERS

CONTRACTOR
Domopan

CONSULTANT
Pascal & Watson

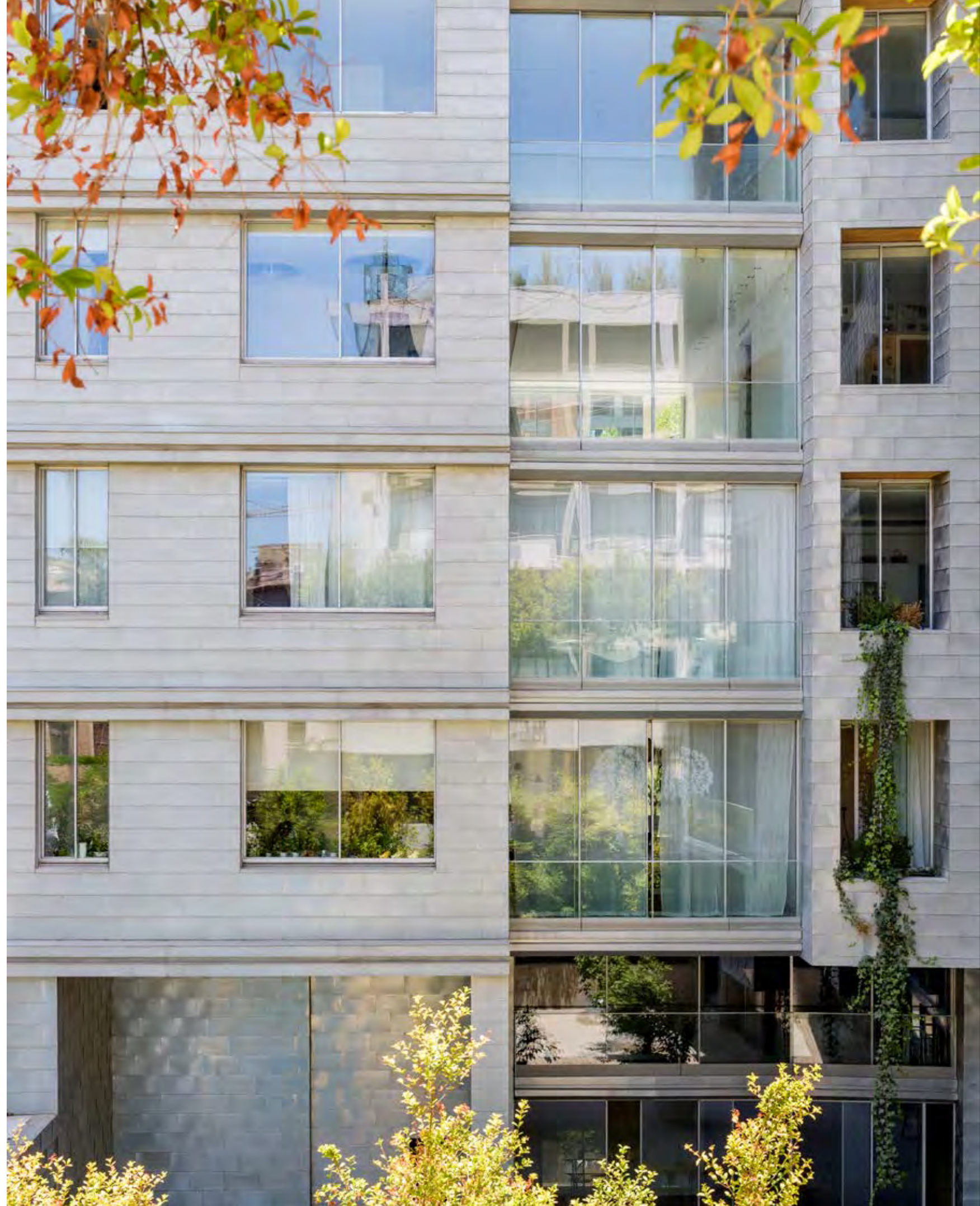
ARCHITECT
Soma Architects

CLIENT
Kempinsky Hotel



INSULA	184
20 30 PENTHOUSE	186
CALYPSO	192
G FROND PALM JUMAIRAH VILLA	196
PRIVATE VILLA	200
I FROND PALM JUMAIRAH VILLA	204
DEMCO TOWERS' PENTHOUSE	208
PRIVATE PENTHOUSE	210
J FROND PALM JUMAIRAH VILLA	212
MARINA TOWN QUAY	216
PALM COUTURE	220
PRIVATE RESIDENCE	222
PRIVATE VILLA	224





INSULA

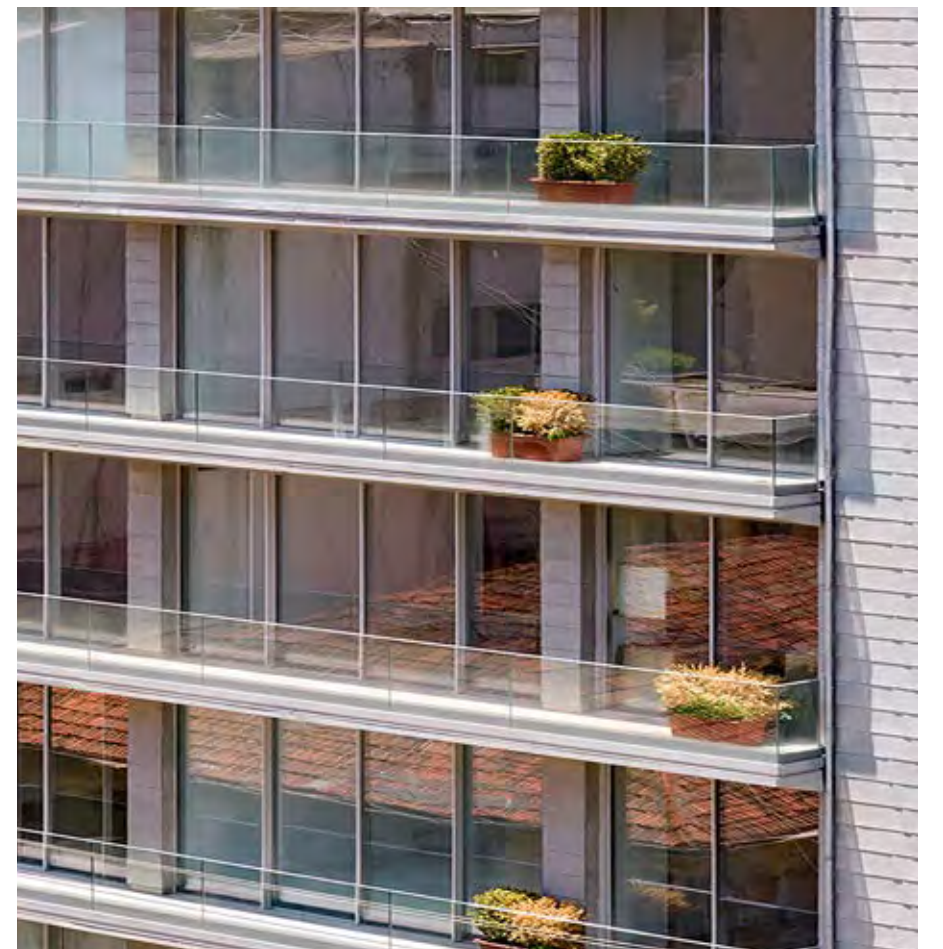
BEIRUT | LEBANON

The project

A multifaceted building varying in different levels of height, with fully landscaped gardens, asymmetrically designed terraces, spacious floor to ceiling windows and zinc facades, Insula is a representation of modern, sustainable and green architectural composition built with environment friendly materials.

Scope of work

3'000 m² of Vitrocsa minimalistic diverse, non-repetitive facades with high performance glazing.



20 | 30 PENTHOUSE

BEIRUT | LEBANON





The project

Situated on top of one of the most prestigious residential buildings in Beirut, the penthouse is a triplex with a generous double volume, a terrace and a pool. The concept of the project was to create an urban retreat that is overlooking the city.

Scope of work

- Motorized 6 m high sliding Main Façade with 5 track invisible rails ;
- Motorized Guillotine with overall dimension of 10 m height and 3 m width ;
- Invisible frame system to create a unified space between the inside and the outside.

MINIMALISTIC
FACADES

20130
PENTHOUSE

ARCHITECT
Raéd Abillama Architects

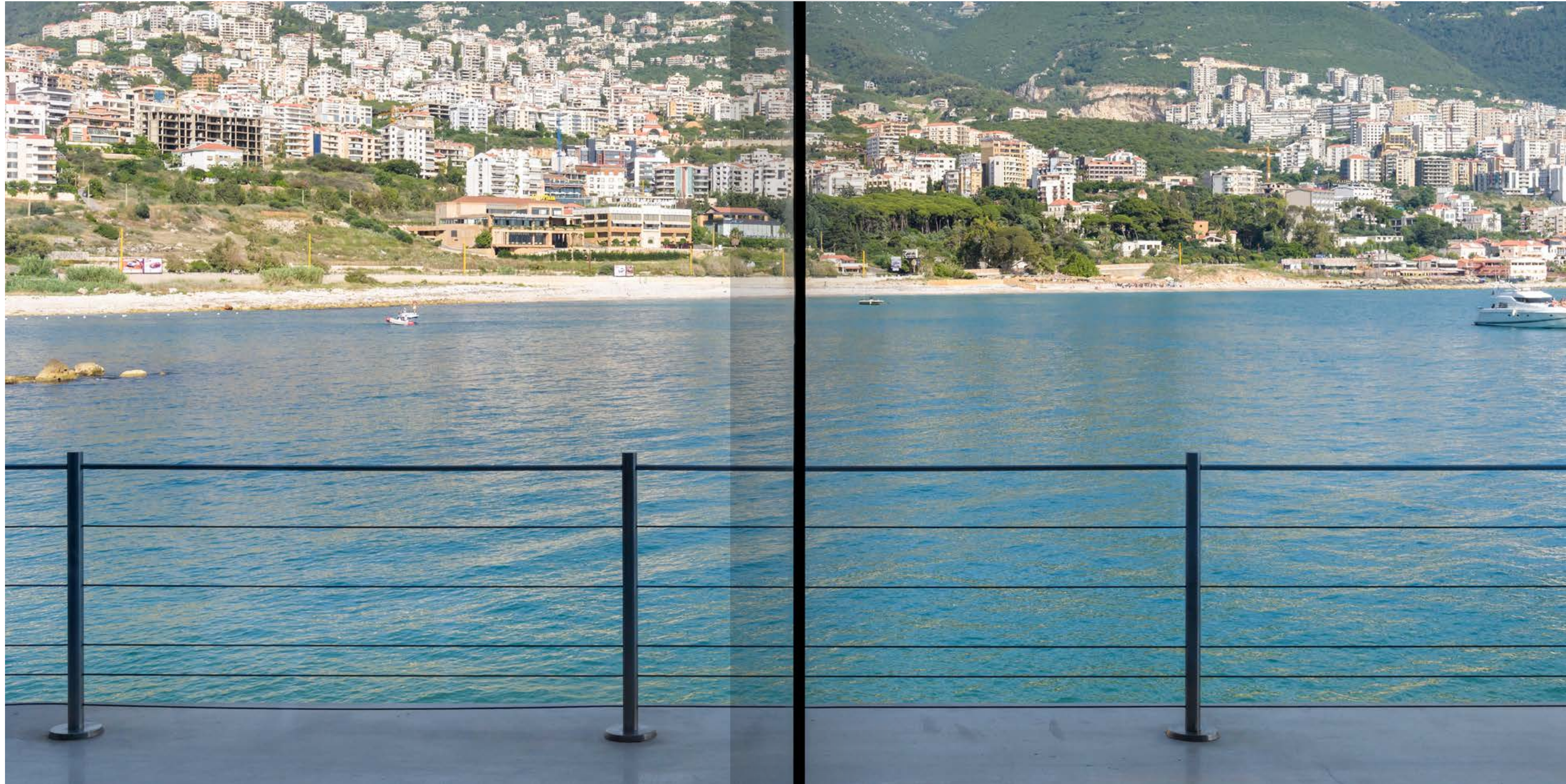
DEVELOPER
Jamil Saab & Co





CALYPSO

JOUNIEH | LEBANON



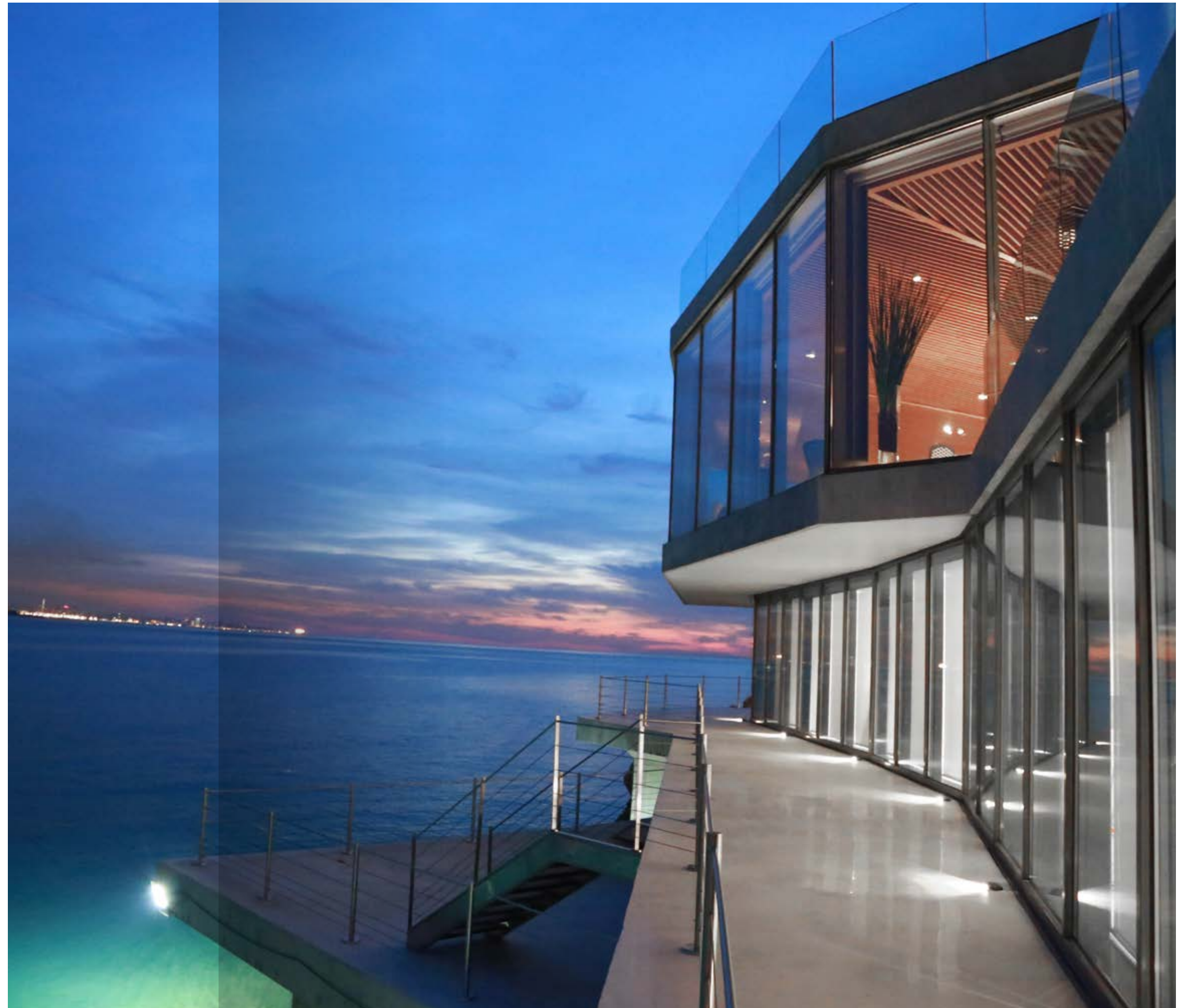
The project

On the North side of Jounieh Bay, where the mountains plunge into the sea, Calypso hovers over the water. The form of the house, derived directly from its surrounding landscape, is striated into three distinct levels.

The continuous wrap around deck at the lower level acts as a wave breaker. The second line of defense is the glass itself: a patented system of laminated glazing supported by structural steel.

Scope of work

- 65 lm of uninterrupted minimalistic Vitrocsa glass wall surrounding the house, and offering breathtaking views of the sea and the mountains to the tenants, while providing the required rigidity, air and water tightness through custom designed reinforced profile system;
- Multi-laminated glazing capable to withstand the waves' pressure up to 40 Tons/m².



G FROND PALM JUMAIRAH VILLA

DUBAI | UAE



Scope of work

- Triple Volume Vitrocsa Facade system with invisible frame system ;
- 6 m High multiple sliding panels.



PRIVATE VILLA

JOUNIEH | LEBANON





The project

Turnable Corner Vitrocsa Minimalistic TH+ Façade with an overall opening of 16 m width and 2.5 m height ; the glazed panes are stored in a dedicated discrete area, completely freeing up the passageway and thus optimizing space.

I FROND PALM JUMAIRAH VILLA

DUBAI | UAE



The project

Identical 2 Villas with Vitrocsa minimalistic façade system and Slim Profile curtain Wall System.



DEMCO TOWERS' PENTHOUSE

ANTELIAS | LEBANON

The project

Motorized Sliding Vitrocsa Minimalistic Façade with an overall opening of 12 m width and 6m height.





PRIVATE PENTHOUSE

BEIRUT | LEBANON

The project

Motorized Sliding Vitrocsa Minimalistic Façade with an overall opening of 9m width and 7 m height.

J FROND PALM JUMAIRAH VILLA

DUBAI | UAE





Scope of work

Bespoke double and triple Volume Vitrocsa Facade, linked at the ground floor to a multi-track sliding façade with invisible frame system.





MARINA TOWN QUAY

BEIRUT CENTRAL DISTRICT | LEBANON

The project

Located in Downtown Beirut, the new Beirut Marina extends the existing corniche along the seashore into a series of overlapping platforms and includes apartments, a yacht club, public facilities, harbor, restaurants, and specialty stores.

Scope of work

- 3'500 m² of sliding oversized façades with Vitrocsa minimalistic thermally broken profiles ;
- 1'200 lm of aluminum perforated, 5 mm thick marine sheet cladding ;
- Aluminum, folding, sliding doors ;
- Thermally broken hinged doors from Wicono-Germany.





PALM COUTURE

DUBAI | UAE

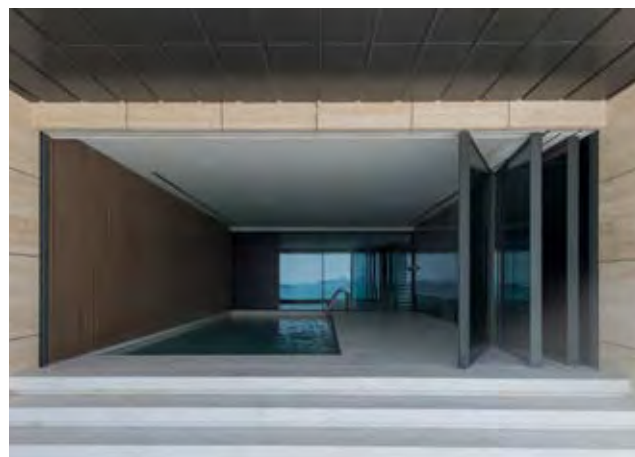
The project

Situated at the Trunk of the Palm Jumeirah in Dubai, facing the Dubai Eye, this 9 stories residential project presents an enhanced living environment with contemporary minimalism and clarity of detail.

Scope of work

Glassline was selected by the Employer for the design of the Project's facades with the philosophy of converting their aspect from conventional to Minimalistic. Glassline scope of works comprised of:

- 3'500 m² of Vitrocsa Minimalistic Sliding facades system
- 500 m² of Bespoke Turnable corner facades to the swimming pools of each floor level
- 1'000 m² of Slim profile curtain wall with integrated windows and doors.
- 1'200 m² of Balustrades and Canopy structural Glazing.



PRIVATE RESIDENCE

FAQRA | LEBANON



PRIVATE VILLA

FAQRA | LEBANON



Impressum

Graphic design :
Inox Communication SA
www.inox.com

Photography :
Patrice Schreyer
Diana Mehrez
Charbel Bouez

Print :
Anis Commercial Printing Press

