



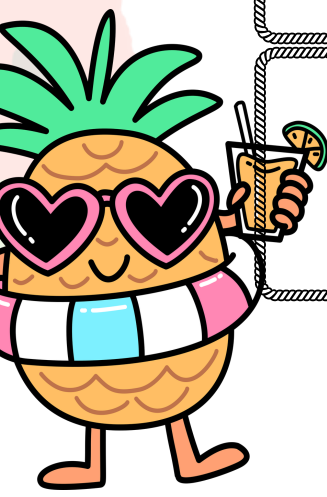
GLENTHORNE PRIMARY



WEEK ONE. W/C: 1/6/26, 22/6/26, 13/7/26, 7/9/26, 28/9/26, 19/10/26



	MONDAY	TUESDAY	WEDNESDAY	THURSDAY	FRIDAY
MAIN ONE	Pepperoni Pizza	Chicken Tikka Wrap	Pork Meatballs in a Rustic Tomato Sauce & Pasta	Roast Gammon & Pineapple with Mashed Potatoes, Carrots & Peas	Classic Fish 'n' Chips
MAIN TWO	Classic Cheese & Tomato Pizza (v)	Cheese Toastie (v)	Quorn Balls in a Rustic Tomato Sauce & Pasta (v)	School Favourite Beans on Toast (ve)	Vegetable Samosas with Yogurt Dip (v)
LIGHTBITE	Jacket Potato with Cheese & Beans or Sandwiches with a Selection of Fillings	Jacket Potato with Cheese & Beans or Sandwiches with a Selection of Fillings	Jacket Potato with Cheese & Beans or Sandwiches with a Selection of Fillings	Jacket Potato with Cheese & Beans or Sandwiches with a Selection of Fillings	Jacket Potato with Cheese & Beans or Sandwiches with a Selection of Fillings
SIDE	Potato Waffles, Baked Beans & Salad Bar	Fluffy Rice, Peas & Sweetcorn	Homemade Fresh Baked Bread (h) & Salad Bar	Extra Vegetables & Salad Bar	Chips, Baked Beans or Peas
DESSERT	Homebaked Iced Sponge & Custard (h) or Fresh Fruit	Fruit Jelly or Fresh Fruit	Pam's Flapjack (h) or Fresh Fruit	Fruit Crumble & Custard or Fresh Fruit	Artic Roll, Fresh Fruit or Yogurt



Index: (V) - Vegetarian, (VE) - Vegan, (H) - Homemade
If you require any allergy information then please contact the school office direct.

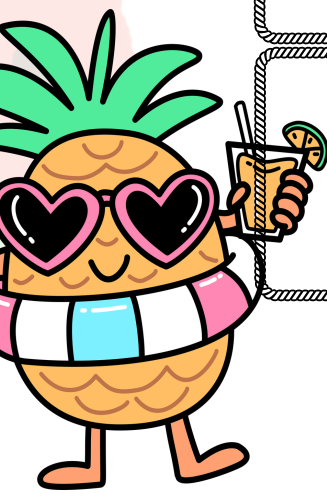


GLENTHORNE PRIMARY

WEEK TWO. W/C: 8/6/26, 29/6/26, 20/7/26, 14/9/26, 5/10/26



	MONDAY	TUESDAY	WEDNESDAY	THURSDAY	FRIDAY
MAIN ONE	Pepperoni Pizza	Glenthorne All Day Breakfast	Chicken Curry, Fluffy Rice & Naan Bread	Roast Turkey Stuffing, Mashed & Roast Potatoes	Golden Chicken Nuggets
MAIN TWO	Classic Cheese & Tomato Pizza (v)	Tomato Pasta & Garlic Bread (v)	Spaghetti on Toast (v)	Cheese & Bean Puff (v)	Quorn Nuggets (v)
LIGHTBITE	Jacket Potato with Cheese & Beans or Sandwiches with a Selection of Fillings	Jacket Potato with Cheese & Beans or Sandwiches with a Selection of Fillings	Jacket Potato with Cheese & Beans or Sandwiches with a Selection of Fillings	Jacket Potato with Cheese & Beans or Sandwiches with a Selection of Fillings	Jacket Potato with Cheese & Beans or Sandwiches with a Selection of Fillings
SIDE	Curly Fries, Baked Beans & Salad Bar	Sweetcorn & Salad Bar	Selection of Vegetables & Salad Bar	Carrots, Peas & Salad Bar	Chips, Baked Beans or Peas
DESSERT	Fluffy Pancakes, Blueberries & Syrup or Fresh Fruit	Homebaked Jammy Shortbread (h) or Fresh Fruit	Homemade Chocolate Sponge (h) & Custard or Fresh Fruit	Fruit Cheesecake or Fresh Fruit	Ice Cream Pot or Fresh Fruit



Index: (V) - Vegetarian, (VE) - Vegan, (H) - Homemade
If you require any allergy information then please contact the school office direct.

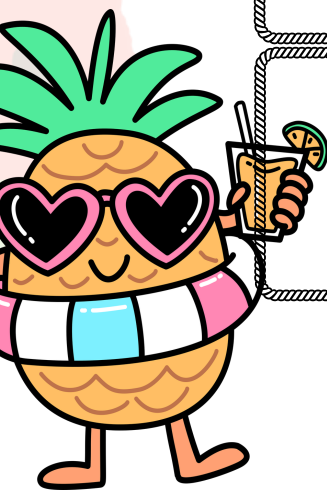


GLENTHORNE PRIMARY

WEEK THREE W/C: 15/6/26, 6/7/26, 31/9/26, 21/9/26, 12/10/26



	MONDAY	TUESDAY	WEDNESDAY	THURSDAY	FRIDAY
MAIN ONE	Ham & Pineapple Pizza	Kids Favourite Beef Lasagne	Hot Dogs	Roast Chicken, Stuffing, Mashed & Roast Potatoes	Crispy Fish Fingers
MAIN TWO	Classic Cheese & Tomato Pizza (v)	Pasta in Tomato Sauce (ve)	Quorn Hot Dogs	Golden Fishcake with Roast Potatoes	Fishless Fingers (ve)
LIGHTBITE	Jacket Potato with Cheese & Beans or Sandwiches with a Selection of Fillings	Jacket Potato with Cheese & Beans or Sandwiches with a Selection of Fillings	Jacket Potato with Cheese & Beans or Sandwiches with a Selection of Fillings	Jacket Potato with Cheese & Beans or Sandwiches with a Selection of Fillings	Jacket Potato with Cheese & Beans or Sandwiches with a Selection of Fillings
SIDE	Herby Diced, Spaghetti Hoops & Salad Bar	Garlic Bread, Selection of Vegetables & Salad Bar	Potato Wedges, Sweetcorn & Salad Bar	Carrots, Cabbage & Salad Bar	Chips, Baked Beans or Peas
DESSERT	Homebaked Shortbread (h) or Fresh Fruit	Fruit & Ice Cream or Fresh Fruit	Homemade Chocolate Muffins (h) or Fresh Fruit	Eton Mess or Fresh Fruit	Mousse with Homebaked Shortbread or Fresh Fruit



Index: (V) - Vegetarian, (VE) - Vegan, (H) - Homemade
If you require any allergy information then please contact the school office direct.