



CLIPLESS & BEARINGLESS JETS

One of the first plastic projects Rising Dragon executed was the creation of the now patented "Axis" bearingless jet.

These self-cleaning jets use a floating stainless steel shaft seated into a forward steel bushing, instead of bearings, which can become easily clogged with suspended debris in the water. The pin spins more freely as well delivering a better massage with less horsepower.

We did not stop with this patented idea. Product durability and performance continue to dominate the development focus for all our jet products. We are continually seeking better and more forgiving raw materials and designs to offset end client water chemistry mistakes.

Many new jets have been added to the line up this year, and still more are under development .

Quantum jet technology from Rising Dragon is the only jet offered in the market that effectively deals with the post sale consumer problems long associated with water chemistry. Patent pending technology eliminates jets popping out and keep both dealers and end consumers from the headaches and costs of after-market service and replacement. All Quantum jets are made with specially formulated plastic that is "tried and true" in all water sanitizers and, of course, our patent pending threaded design that incorporates on and off functions without the use of clips.

We offer full private labeling design faces as well as exclusive co-development of your ideas, so ask us how we can make your insight a reality.



ALPHA JETS III

3" Spinning Jet/
Sterling Gray



A Better Classic Deisgn. The New ALPHA.



Directional Jet



Spinning Jet

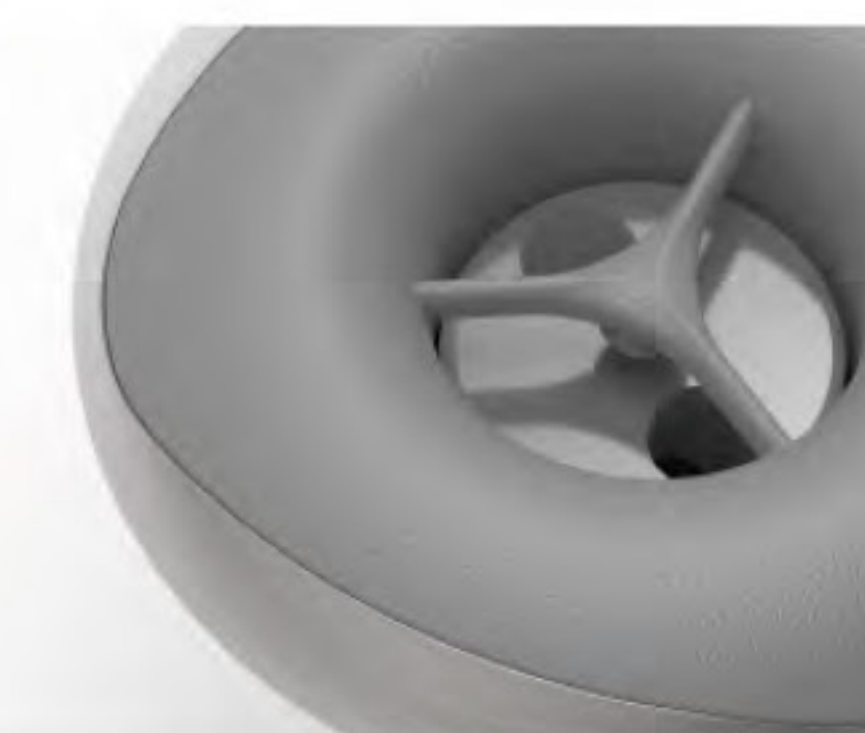


3" Spinning Jet/
Standard Gray

New Alpha is evolved based on RDT'S first generation Alpha, with hard textured plastic parts and smoother profile.



Gloss/Brushed finishes are available on stainless steel part.



Jets Available Sizes (both on directional/
spinning jet)
5"/4"/3"/2"

ALPHA JETS

2.5" JET

RD203-2610



RD203-2510



JET INTERNALS

Part No.	Description	Case Quantity	Remarks
RD203-2610	2.5" Alpha Face Directional Jet Internal - Two Tone (Screw-in)	250	/
RD203-2510	2.5" Alpha Face Spinning Jet Internal - Two Tone (Screw-in)	250	/

COLORS

Custom Color and Combinations Available



Standard Grey



Sterling Grey



Graphite Grey



Black

Customize
your own
color

Customize

STAINLESS STEEL



Custom Color and Combinations Available.
Polished, Brushed, Titanium Coated SS surface finish options available.

ALPHA JETS

Nut

Part No.	Description	Case Quantity
RD201-2021	2.5" Jet Nut	1,000

RD201-2021



O-ring

Part No.	Description	Remarks
RD701-0208	2.5" Jet O-ring	/
RD702-0218	2.5" Jet Gasket	/

RD701-0208



RD203-2001



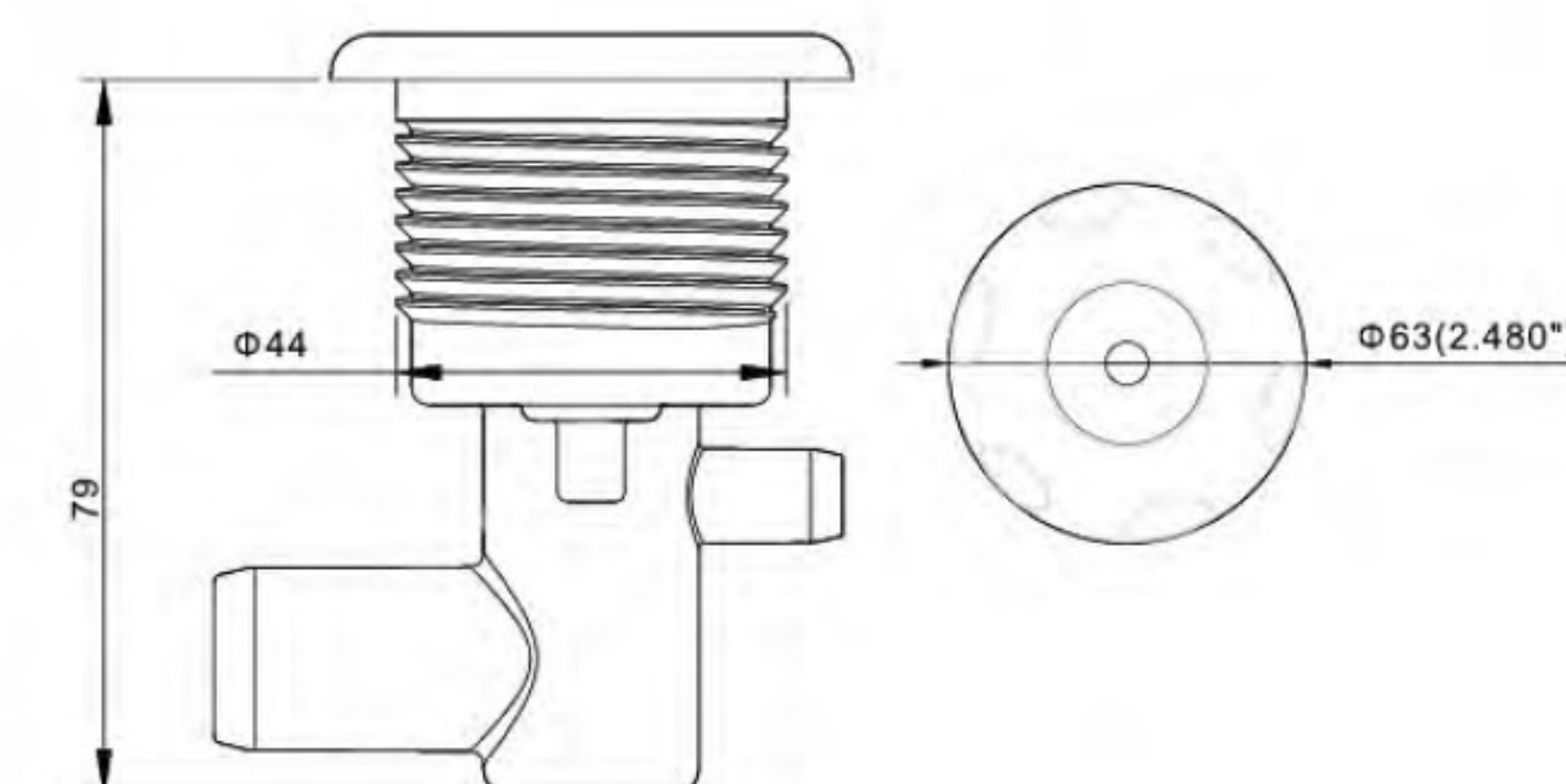
RD203-2002



RD203-2003

JET BODIES

Part No.	Description	Case Quantity	Remarks
RD203-2001	3/4" SB x 3/8" SB-2.5" Jet Body (Screw-in)	200	/
RD203-2002	1/2" Soc x 3/8" SB-2.5" Jet Body (Screw-in)	200	/
RD203-2003	3/4" RB x 3/8" SB-2.5" Jet Body (Screw-in)	200	/



II ALPHA JETS

3" JET



JET INTERNALS

Part No.	Description	Case Quantity	Remarks
RD203-3610	3" Alpha Face Directional Jet Internal - Two Tone(Screw-in)	140	/
RD203-3510	3" Alpha Face Single Pulse Internal - Two Tone(Screw-in)	140	/
RD203-3520	3" Alpha Face Twin Pulse Internal - Two Tone(Screw-in)	140	/

COLORS

Custom Color and Combinations Available



Standard Grey



Sterling Grey



Graphite Grey



Black

Customize
your own
color

Customize

STAINLESS STEEL



Custom Color and Combinations Available.
Polished, Brushed, Titanium Coated SS surface finish options available.

ALPHA JETS II



JET BODIES

Part No.	Description	Case Quantity	Remarks
RD203-3001	3/4" SB x3/8" SB-3" Jet Body (Screw-in)	140	/
RD203-3002	1/2" Soc x3/8" SB-3" Jet Body (Screw-in)	140	/
RD203-3003	3/4" RB x3/8" SB-2.5" Jet Body (Screw-in)	140	/



RD201-3021

Nut

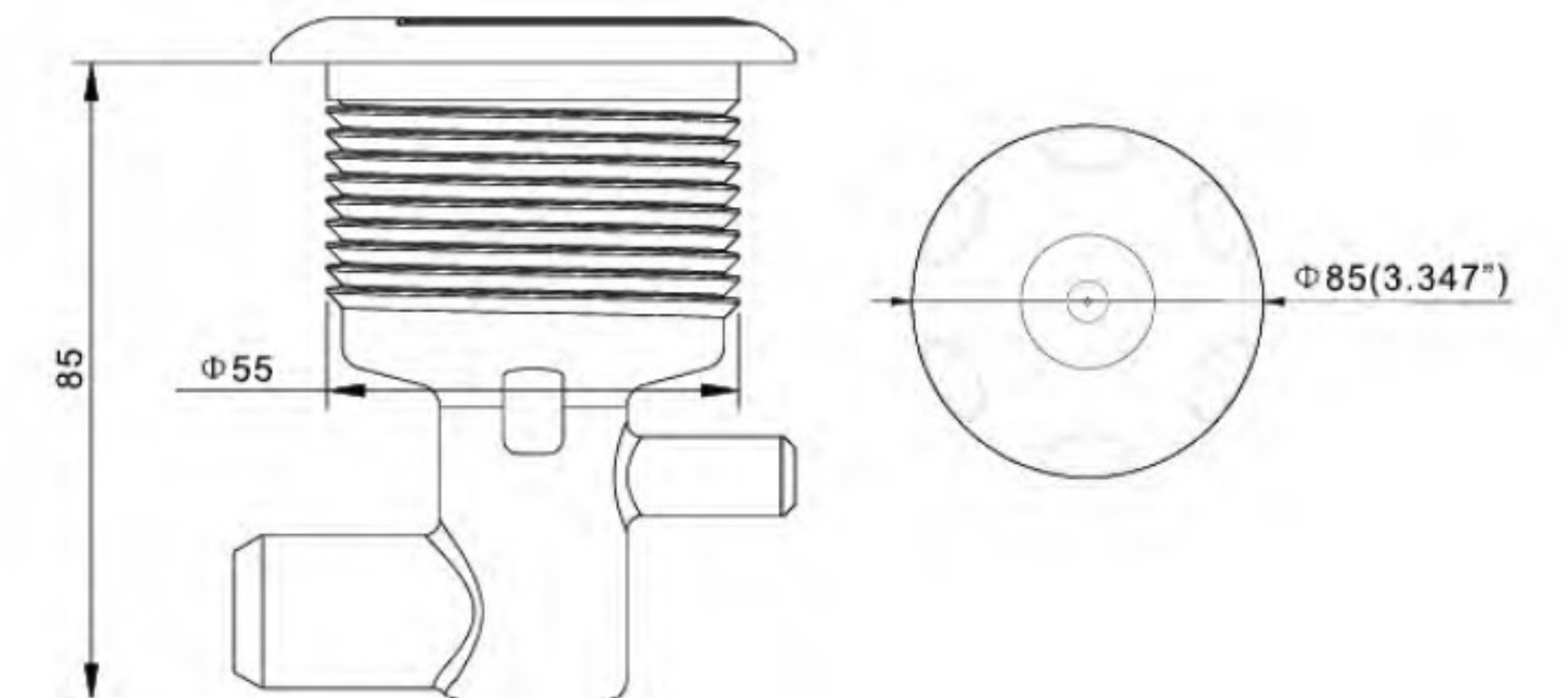
Part No.	Description	Case Quantity
RD201-3021	3" Jet/Air Control	500



RD701-0308

O-ring

Part No.	Description	Remarks
RD701-0308	3" Jet O-ring	/
RD702-0308	3" Gasket	/



ALPHA JETS

**LARGE
FACE**

LARGE 4" JET

RD203-L4610



RD203-L4510



RD203-L4520



JET INTERNALS

Part No.	Description	Case Quantity	Remarks
RD203-L4610	Large 4" Alpha Face Directional Jet Internal - Two Tone(Screw-in)	66	/
RD203-L4510	Large 4" Alpha Face Single Pulse Internal - Two Tone(Screw-in)	66	/
RD203-L4520	Large 4" Alpha Face Twin Pulse Internal - Two Tone(Screw-in)	66	/

COLORS

Custom Color and Combinations Available



Standard Grey



Sterling Grey



Graphite Grey



Black

Customize
your own
color

Customize

STAINLESS STEEL



Custom Color and Combinations Available.
Polished, Brushed, Titanium Coated SS surface finish options available.

ALPHA JETS



Jet Bodies

Part No.	Description	Case Quantity	Remarks
RD203-4001	3/4" SB x 3/8" SB-4" Jet Body (Screw-in)	90	/
RD203-4002	1/2" Soc x 3/8" SB-4" Jet Body (Screw-in)	90	/
RD203-4003	3/4" RB x 3/8" SB-4" Jet Body (Screw-in)	90	/



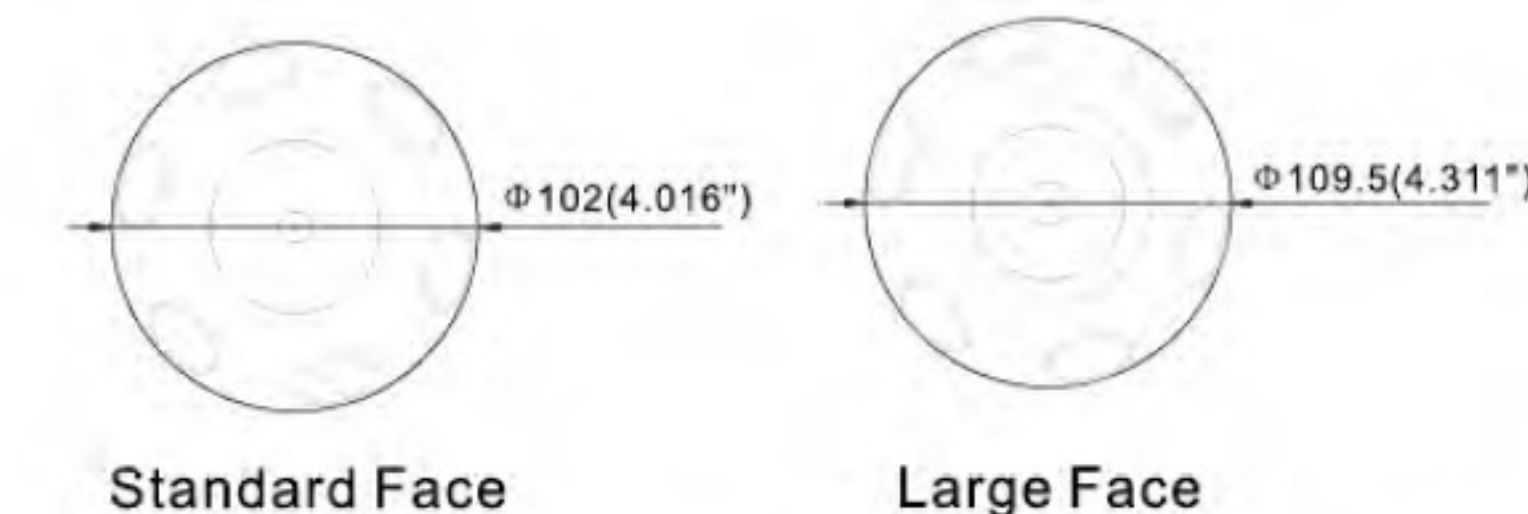
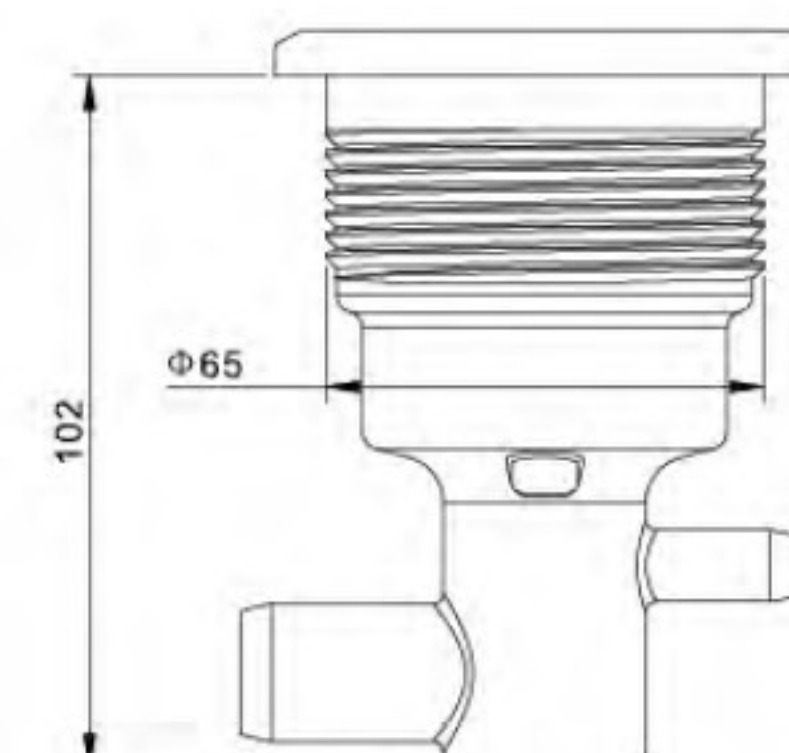
Nut

Part No.	Description	Case Quantity
RD201-4021	4" Jet Nut	460



O-ring

Part No.	Description	Remarks
RD701-0408	4" Jet O-ring	/
RD702-0408	4" Gasket	/



ALPHA JETS

5"JET

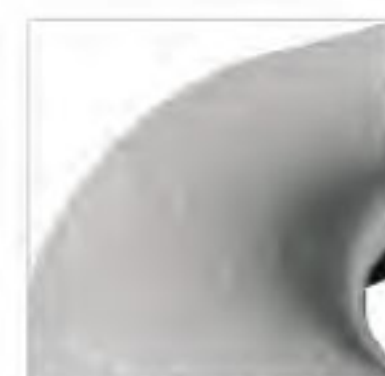


JET INTERNALS

Part No.	Description	Case Quantity	Remarks
RD203-5610	5" Alpha Face Directional Jet Internal-Two Tone (Screw-in)	48	/
RD203-5510	5" Alpha Face Single Pulse Internal-Two Tone (Screw-in)	48	/
RD203-5520	5" Alpha Face Twin Pulse Internal-Two Tone (Screw-in)	48	/

COLORS

Custom Color and Combinations Available



Standard Grey



Sterling Grey



Graphite Grey



Black

Customize
your own
color

Customize

STAINLESS STEEL



Custom Color and Combinations Available.
Polished, Brushed, Titanium Coated SS surface finish options available.

ALPHA JETS



JET BODIES

Part No.	Description	Case Quantity	Remarks
RD203-5001	3/4"SB x 3/8"SB - 5" Jet Body(Screw-in)	36	/
RD203-5002	1/2"Soc x 3/8"SB - 5" Jet Body(Screw-in)	36	/
RD203-5003	3/4"Soc x 3/8"SB - 5" Jet Body(Air/Water same side)(Screw-in)	36	/
RD203-5004	3/4"SB x 3/8"SB - 5" Jet Body(Screw-in)	36	/
RD203-5005	3/4"RB x 3/8"SB - 5" Jet Jet Body(Screw-in)	36	/



RD201-5021

Nut		
Part No.	Description	Case Quantity
RD201-5021	Nut - (5" Jet/5" Light Housing)	120



RD701-0408

O-ring		
Part No.	Description	Remarks
RD701-0508	5" O-ring	/
RD702-0508	5" Gasket	/

