



**ANNUAL REPORT  
2025**

**PHILANTHROPY CONNECTIONS  
FOUNDATION**

**2025**  
Annual Report

**Stichting Philanthropy Connections**

Bilderdijkkade 3-H  
1052RS Amsterdam  
The Netherlands

RSIN / Tax Number (NL): 851226784

**Philanthropy Connections Foundation**

62 Wongwaen Road, Chang Phueak,  
Mueang Chiang Mai, 50300, Thailand

Tel. +66 (0) 52 005 779

Tax ID: 0 9930 00366 52 2

[philanthropyconnections.org](http://philanthropyconnections.org)

[info@philanthropyconnections.org](mailto:info@philanthropyconnections.org)





# CONTENTS

1. MESSAGE FROM THE FOUNDER	01
2. A MESSAGE FROM OUR SPONSORS	04
3. 2025 AT A GLANCE	05
4. ABOUT PCF	07
5. OUR DUE DILIGENCE	09
6. PCF TIMELINE AND GROWTH	11
7. SUSTAINABLE DEVELOPMENT GOALS	14
8. IMPACT HIGHLIGHTS	15
9. PROJECT SPOTLIGHT	26
10. A MESSAGE FROM OUR SPONSORS	28
11. MESSAGE FROM A PROJECT PARTNER	30
12. VIDEOS OF THE YEAR	32
13. EVENT	34
14. FUNDRAISING THROUGH COMMUNITY ACTION	35
15. PROJECT SPENDING PER PARTNER	37
16. FINANCES	39
17. OUR BOARD	46
18. MEET OUR TEAM	47
19. OUR SPONSORS AND SUPPORTERS	49



## MESSAGE FROM THE FOUNDER



The core of our work remains simple: we listen before we act. After two decades of living and working in this region, I am more convinced than ever that sustainable change is not something we can impose from the outside. It must be led by those who already have the trust of their communities.

In 2025, we maintained our disciplined approach to philanthropy. We reached more than 13.700 beneficiaries across Thailand, Myanmar, and Cambodia, but for us, the quality of our impact is always more important than the scale of our reach. This is reflected in our due diligence process: out of 12 organisations we assessed this year, we entered into only 1 new partnership. This selectivity ensures that we only invest in projects where we can guarantee transparency and long-term viability.

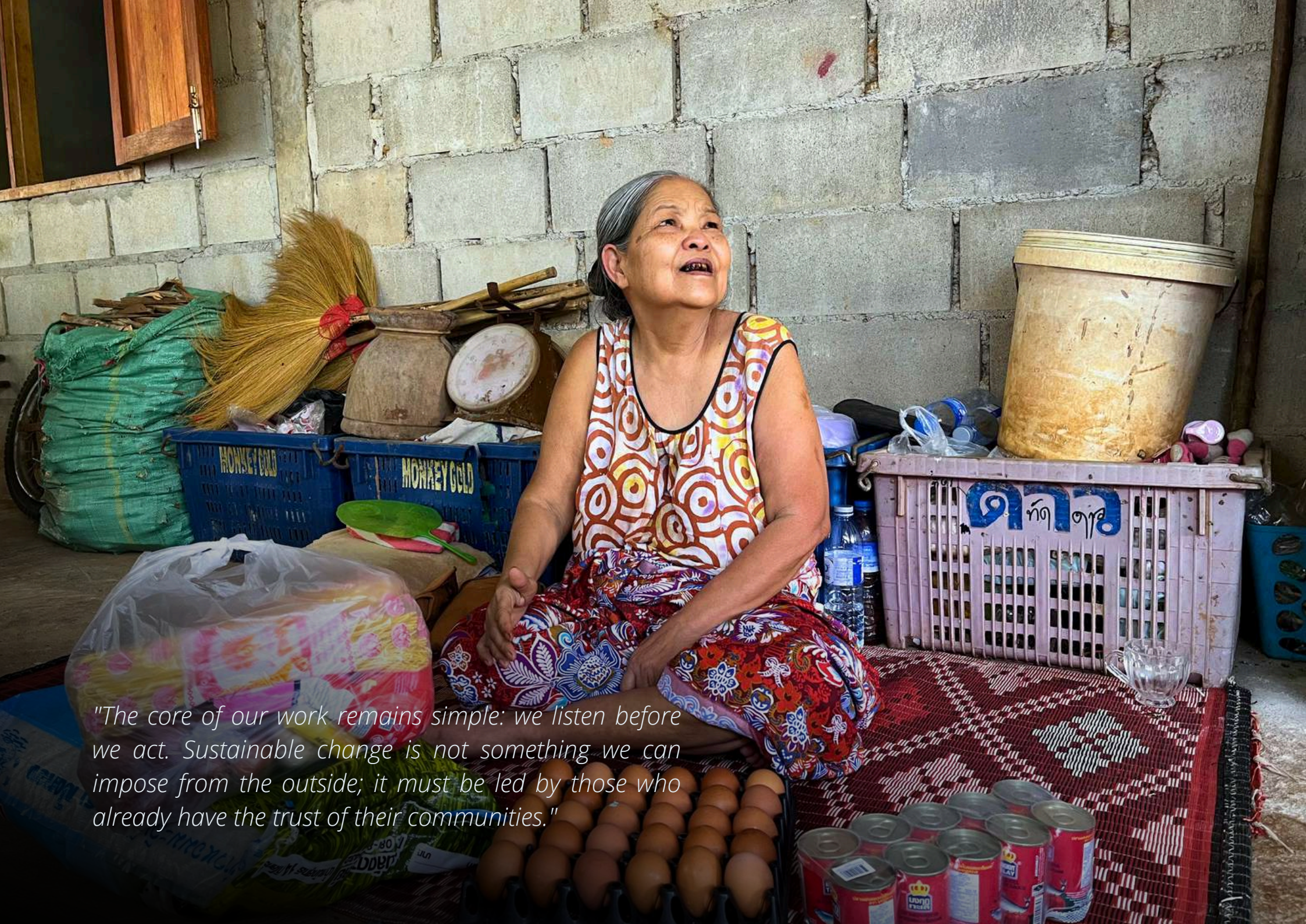
The challenges in our region continue to evolve. In Myanmar, we have had to be flexible and fast in responding to conflict and displacement. In Thailand and Cambodia, our focus remains on education and healthcare as the essential building blocks for a life of dignity. Whether we are supporting a boarding house for migrant children or providing healthcare to underserved families, our goal is to provide a 'stepping stone' toward independence.

This year, we also began formally mapping our projects against the United Nations Sustainable Development Goals. While we are a local foundation, our work in Quality Education and Good Health contributes to a much larger global mission. Preparing for these reporting standards now ensures that we remain a professional and reliable partner for institutional donors in the years to come.

We were able to direct 376.802 Euros toward our projects in 2025. This was only possible because of the trust our donors place in us. We do not take this responsibility lightly. We remain committed to radical transparency and to ensuring that every Euro is spent where it is needed most.

I am sincerely grateful to our team, our partners, and our supporters. You are the bridge that allows us to turn community visions into reality.

Warm regards,  
Sallo



*"The core of our work remains simple: we listen before we act. Sustainable change is not something we can impose from the outside; it must be led by those who already have the trust of their communities."*





## A MESSAGE FROM OUR SPONSORS

Years ago, I searched for a charitable project that would allow me to give back to children what I received almost automatically in my own youth. Finding a sustainable, long-term aid organisation proved challenging. The deciding factor in choosing Sallo's Philanthropy Connections Foundation was that with the Boarding House, I could support a long-term and sustainably effective initiative.

The Boarding House gives children, predominantly from Shan State, Myanmar (Burma), the chance to live in safety and at the same time receive a good education. While 17 students lived there initially in 2016, this number has increased drastically in recent years, mainly due to the political situation in Myanmar. In December 2025, Fabia and I were able to visit the Boarding House for the second time and see for ourselves exactly how my donations are being used on the ground. It was clear to us that our contribution continues to have a positive impact on the lives of these children.

### **Yves Vontobel on behalf of himself and Fabia Bullet**

Supporter of the boarding house at Koung Jor Shan Refugee Camp since 2016

## 2025 AT A GLANCE

21

ACTIVE PROJECTS

8

PARTNER ORGANISATIONS

13.700+

BENEFICIARIES REACHED

€376.802

SPENT ON PROJECTS

### Notes:

- The total project spending of €376.802, as mentioned in our financial statements, includes €8.072 directed to a special project in Indonesia.



## THAILAND

€272.820

16 projects



## MYANMAR

€29.186

3 PROJECTS



## CAMBODIA

€66.724

2 PROJECTS





# ABOUT PCF

## NGO

We are a non-profit organisation that supports people in vulnerable situations in Thailand, Myanmar, and Cambodia.

## PARTNERSHIP

We work in partnership with local organisations that know the needs of their communities. They possess the expertise and local knowledge to identify exactly what solutions work in their unique context. They are the ideal partners to implement these projects, as they design and manage the solutions themselves. What they often lack are the resources to find help from outside.

## CONNECTION

We find the required help for our partners - we connect, we engage, we facilitate. We shine a light on small, effective grassroots organisations.

# FIND, HELP & EMPOWER PEOPLE IN NEED

PCF believes lasting, meaningful change is strongest when it is led by the people closest to the challenge. That is why PCF supports local community leaders and trusted local organisations who understand their communities' languages, cultures, needs, and lived realities. Rather than directing from the outside, PCF works alongside them as a supportive partner, providing funding, guidance, and accountability while safeguarding local ownership and dignity. This approach helps deliver sustainable outcomes.

This principle shapes all of PCF's work. Projects respond to priorities identified on the ground, including education, healthcare, and access to basic needs, as well as emergency support during conflict and natural disasters. PCF also provides humanitarian assistance for refugees and internally displaced people. By focusing on remote and underserved areas and strengthening local capacity, PCF helps communities address immediate challenges while building resilience for the future. The result is practical, respectful support that continues to make a difference over time.



# OUR DUE DILIGENCE

PCF maintains a rigorous and structured due diligence system as a critical component of the “FIND” phase within its mission to **Find, Help & Empower People in Need**. This process reflects PCF’s commitment to ensuring that partnerships are both impactful and sustainable, grounded in the belief that local organisations are best positioned to create meaningful stepping stones from poverty to opportunity. Prospective partners are assessed against six core eligibility criteria and evaluated through a comprehensive three-phase review process designed to ensure alignment with PCF’s values, governance standards and long-term impact potential.

In 2025, PCF conducted intensive due diligence assessments with 12 local community-based organisations, resulting in one new partnership. While this outcome is highly selective, it reflects our responsibility to the communities we serve. They deserve programmes that are robust, stable, and capable of delivering on their promises for the long term.

Our assessments are a dialogue. We listen to community plans and work with local leaders who know the needs and solutions best. By matching their expertise with PCF’s resources, we build strong foundations for sustainable change.

## THREE-PHASE REVIEW PROCESS

### SCREENING

#### Stage 1

#### Preliminary Assessment

Focuses on mission, reputation, financial transparency, and capacity to reach vulnerable communities. Designed to be low-burden with multiple-choice and short-response questions.

### SHARING YOUR VISION

#### Stage 2

#### In-Depth Evaluation

A detailed follow-up questionnaire delving into operational structure, long-term objectives, and community impact. Organisations submit supporting documents to verify governance, financial sustainability, and adherence to non-discrimination policies.

### PROJECT VISIT

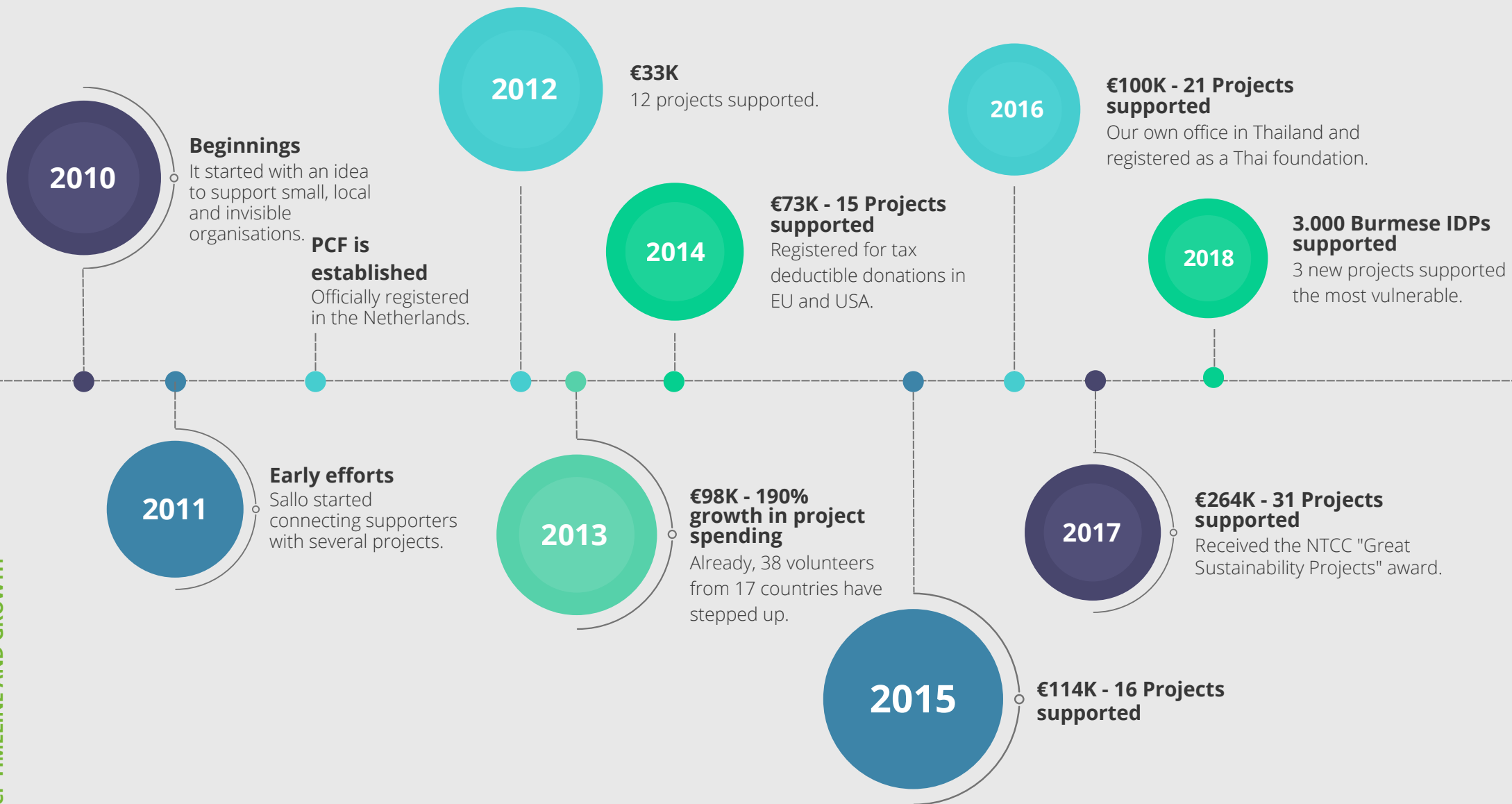
#### Stage 3

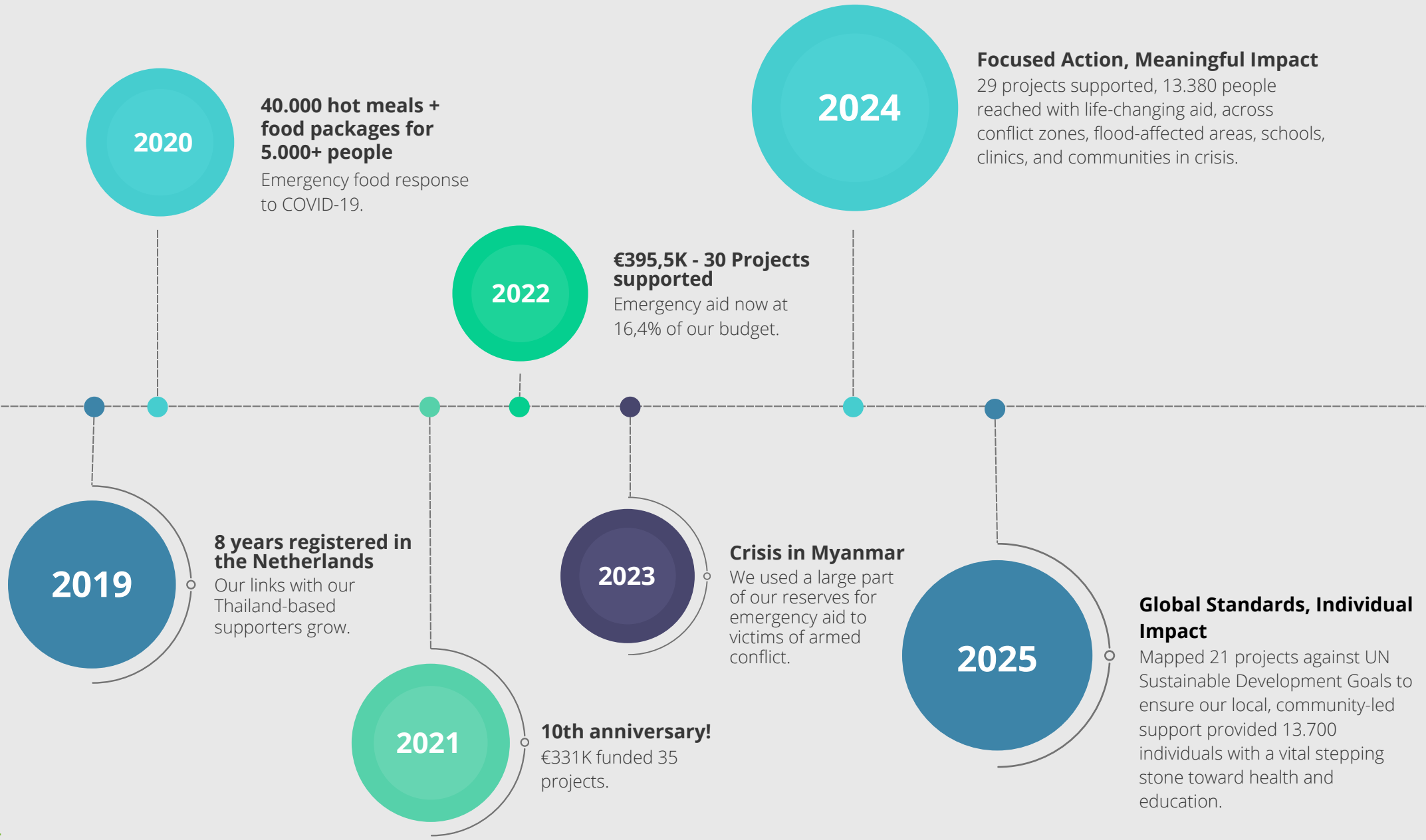
#### On-Site Assessment

Where feasible, a PCF representative, typically the COO, Project Manager, and Programme Officer, visits the organisation in person. Direct observation of activities, beneficiary engagement, and real-world impact validation. Also an opportunity to capture material for donor reporting.



# PCF TIMELINE AND GROWTH







# SUSTAINABLE DEVELOPMENT GOALS

In 2025, we began integrating the United Nations Sustainable Development Goals (SDGs) into our reporting framework. Mapping our projects against these global targets allows us to better understand and demonstrate how our local work contributes to wider international development.

Although local organisations are not currently required to report against SDG indicators, we are taking these proactive steps to prepare for future institutional funding requirements. Our ongoing review identifies the specific goals each project supports; many contribute to Quality Education, while others focus on Good Health and Well-being, No Poverty, Zero Hunger, and Clean Water and Sanitation. This framework provides a reliable basis for demonstrating our long-term impact within a global context.

Primary focus

**Quality Education (SDG 4)**

Largest share of PCF projects

Also supported

**No Poverty, Zero Hunger, Good Health and Well-being, Clean Water and Sanitation (SDGs 1, 2, 3 & 6)**

**1 NO POVERTY**



**2 ZERO HUNGER**



**3 GOOD HEALTH AND WELL-BEING**



**4 QUALITY EDUCATION**



**5 GENDER EQUALITY**



**6 CLEAN WATER AND SANITATION**



**7 AFFORDABLE AND CLEAN ENERGY**



**8 DECENT WORK AND ECONOMIC GROWTH**



**9 INDUSTRY, INNOVATION AND INFRASTRUCTURE**



**10 REDUCED INEQUALITIES**



**11 SUSTAINABLE CITIES AND COMMUNITIES**



**12 RESPONSIBLE CONSUMPTION AND PRODUCTION**



**13 CLIMATE ACTION**



**14 LIFE BELOW WATER**



**15 LIFE ON LAND**



**16 PEACE, JUSTICE AND STRONG INSTITUTIONS**



**17 PARTNERSHIPS FOR THE GOALS**



A photograph of a rural village scene. In the foreground, there are several traditional huts with steeply pitched, thatched roofs made of dried palm fronds or similar natural materials. The huts are built on wooden stilts. The background is filled with dense, lush green trees and foliage under a clear blue sky. A bird is seen flying in the upper left portion of the sky. The overall atmosphere is peaceful and rural.

## 2025 IMPACT HIGHLIGHTS

In 2025, our ongoing projects across Thailand, Myanmar, and Cambodia continued to stand alongside children, families, and communities facing poverty, displacement, conflict, and exclusion. These impact highlights show what sustained support can make possible: children staying in school, families accessing healthcare and food, and vulnerable communities finding greater safety, stability, and hope.

Because these are continuing projects, their impact is built not through one-off assistance, but through consistent, long-term commitment. Across each partnership, the aim remains the same: to protect dignity in times of hardship, reduce immediate risks, and create the conditions for people to move forward with greater confidence and opportunity.

## Baan Unrak Foundation (BUR)

Sangkhlaburi, Thailand



# 1.678

BENEFICIARIES

In Sangkhlaburi, poverty, displacement, and isolation keep children out of school and leave vulnerable families without support. We worked to ensure that hardship did not determine a child's future or leave people to cope alone.

Our school support helped children from low-income households, migrant and refugee families, and diverse backgrounds stay engaged in learning by reducing financial barriers. Early years programmes gave younger children stable routines and age-appropriate learning, helping them grow with confidence. Internally displaced children also received daily care, meals, hygiene support, and essential learning materials, providing both safety and a stronger start in life. This care extends to the wider community through home visits to widows, the elderly, and people with disabilities. We provide essential medical support, ensuring the most vulnerable are never left to face challenges alone.



## Ban Nai Soi Community Learning Centre (BNSCLC)

Mae Hong Son Province, Thailand



# 70

BENEFICIARIES

Near the Thai-Myanmar border, many Burmese migrant and ethnic minority young people faced serious barriers to education, including missing documentation, financial pressure, and unstable living conditions. We worked to ensure that these obstacles did not cut short their schooling or limit their future.

We supported secondary-aged students with education, nutritious meals, and access to healthcare, helping them build the stability needed to stay engaged in learning. Wellbeing sessions also helped students strengthen emotional awareness and build positive relationships across diverse backgrounds. Together, this support did more than keep students in school; it gave them greater confidence, consistency, and a stronger chance to move forward.



EDUCATION · MULTILINGUAL LEARNING

## Foundation for Applied Linguistics (FAL)

Chiang Mai & Chiang Rai, Thailand



# 4.330

BENEFICIARIES

In remote mountain communities across Chiang Mai and Chiang Rai, many ethnic children speak only their local language, yet are expected to learn in Thai at school. This language barrier often leaves them struggling to participate, falling behind, and losing confidence early on.

Together with the Foundation for Applied Linguistics, we helped bridge this gap through mother tongue-based multilingual education. By linking home languages with Thai, we made lessons accessible and allowed children to engage fully in their learning. Teacher coaching and training also equipped Thai educators and local assistants with clearer, child-centred methods.

As a result, students participated more actively, grew in confidence, and achieved stronger learning outcomes, including improved National Test results.



HEALTH · PROTECTION · EDUCATION

## Fortune Community Health Group (FCHG)

Chiang Mai, Thailand



# 851

BENEFICIARIES

In Fang District, migrant families often lived on the edge of the healthcare system, where distance, cost, and legal insecurity could turn minor illness into serious risk. Together with Fortune Community Health Group, we brought care closer through screenings, referrals, chronic illness support, and community health education, helping people seek treatment earlier and manage their health more safely.

At Loi Sam Sip camp on the Thai-Myanmar border, displacement had also put safe shelter, education, food, and healthcare at risk. We helped protect that fragile stability through learning support, nutritious meals, health and hygiene education, and the staff and operations needed to keep services running, giving families greater security and children a safer daily routine.



## Kids Ark Foundation (KA)

Chiang Mai, Thailand



### 5

#### SCHOLARSHIP STUDENTS

In northern Thailand, poverty, limited resources, and unresolved citizenship status often place a young person's education at risk. We worked with Kids Ark Foundation to ensure that these barriers did not push disadvantaged Thai and ethnic minority students out of school or undermine their well-being.

Through direct financial support, regular monitoring, academic follow-up, and well-being check-ins, we helped students stay on track and addressed concerns early with schools and families. Safe study spaces, after-school support, and occasional tutoring gave young people structure, encouragement, and room to grow in confidence and responsibility. As students progressed to the next stage of school, their achievement reflected more than academic success; it showed how steady support protected opportunity, strengthened self-belief, and helped them keep building a better future.



**SCHOLARSHIPS IN MOTION**

EDUCATION · EARLY YEARS · SCHOLARSHIPS

## Khmer Akphiwat Khmer Organization (KAKO)

Siem Reap, Cambodia



# 430

BENEFICIARIES

In rural villages around Siem Reap, limited access to early learning and ongoing financial pressure often narrowed a child's chances from the start. We worked with Khmer Akphiwat Khmer Organization to help ensure that children in remote communities were not held back by poverty or distance.

Community preschools gave young children a stable place to learn, with consistent teaching, early learning materials, basic health education, and nutritious snacks that prepared them for primary school. For older students from low-income farming families, scholarships, tutoring, bicycles, school items, and food supplements helped keep education within reach when work and household duties, especially for girls, threatened drop-out. Together, this support gave children a stronger start and helped older students stay in school.



PROTECTION · EDUCATION · COMMUNITY

## Koung Jor Shan Refugee Camp (KJSRC)

Thai-Myanmar border



# 143

BENEFICIARIES

Near the Myanmar border, Koung Jor Shan Refugee Camp remained a vital refuge for displaced Shan families with little access to formal support. We worked to ensure that children affected by conflict, displacement, insecurity, and illness were not left without safety, care, or a chance to learn.

Together with KJSRC, we sustained the boarding house as a safe home for orphaned and vulnerable children who could not be cared for at home. Daily care, nutritious meals, stable routines, and support for school attendance helped protect them from malnutrition, exploitation, trafficking, and forced labour. Evening classes in Thai, English, and computer skills also strengthened confidence, improved school participation, and opened wider opportunities for the future.



EMERGENCY AID · EDUCATION · HEALTH

## Lahu Women's Organization (LWO)

Shan & Karen States, Myanmar



# 6.183

BENEFICIARIES

In Myanmar's Shan and Karen States, conflict and movement restrictions had cut children off from school and pushed vulnerable families closer to hunger. Working with the Lahu Women's Organization, we helped protect both learning and survival in these unstable conditions.

In Than Taung Gyi, internally displaced children continued learning in a safer, child-friendly space with teaching support, essential materials, and psychosocial care that restored routine and protected wellbeing. Hygiene and life-skills sessions also helped children and caregivers manage daily health in crowded camp conditions. Alongside this, emergency rice support reached highly vulnerable displaced families and an orphanage caring for children without parental support, easing acute food insecurity and bringing some stability during prolonged uncertainty.



HIGHER EDUCATION · SCHOLARSHIPS

## PCF Scholarships Programme

Thailand & border communities



# 12

SCHOLARSHIP STUDENTS

Across Thailand's remote communities and border areas, many capable young people faced a painful gap between academic potential and financial reality. For students from low-income Thai families and young people from Myanmar rebuilding their lives after displacement, higher education often determined whether they moved towards stability or were pushed into unsafe work and insecure migration.

Through our Scholarships Programme, we helped remove the pressures that could have forced students to pause or leave their studies. Financial support, regular follow-up, and encouragement helped them stay enrolled, focus on their coursework, and keep progressing through their degrees. In 2025, scholarship graduates completed their studies, showing how sustained support protected opportunity, strengthened confidence, and turned potential into lasting achievement.





Mountain

Rabbit

Fish

Puppy

Back

Mabel

## PROJECT SPOTLIGHT BY PCF PROGRAMME COORDINATOR, SAI PEE (BEE)

Among the five projects that I coordinated in 2025, alongside many other projects supported by PCF, the Koug Jor Shan Refugee Camp boarding house stands out as one of the most meaningful to me. It is not only a place that provides shelter. It gives refugee children a safer place to live, regular meals, support with legal documentation, and continued access to education in Thailand, especially for overage children who have already passed the usual age for their grade level and might otherwise be left behind.

In the 2025–2026 project cycle, 36 children received shelter, food, and education support. Four additional students also obtained ID cards for non-Thai residents, an important step in improving their legal status and helping them access essential services, such as education, healthcare, and other basic public services. As of March 2026, all 36 students are taking their final exams and are expected to complete their current grade level. Two important education milestones are also reached: one student is completing Grade 12 and hopes to continue studying in Chiang Mai, while another is completing Grade 9 and also plans to pursue further education there.

One especially memorable occasion for me is attending the Shan summer course celebration, sharing lunch with the children, and enjoying Shan food together. For me, this project is truly a lifeline for refugee children.

Personal message: “A safe place to stay can protect a child’s future.”







## A MESSAGE FROM OUR SPONSORS

For the seventh year now, we are a sponsor of Philanthropy Connections, and not without reason!

You want to do something good, but whom should you support? By chance, we came across the organisation on TV. It immediately came across as reliable. In particular, the fact that Philanthropy Connections supports local organisations and verifies whether the funds are actually being spent properly.

After looking further into Philanthropy Connections, we quickly decided that there were no excuses not to support the organisation. A common concern is: does your money really reach the people who need it, and aren't the organisation's costs too high? Or, is the organisation trustworthy at all...

We can say from our own experience that Philanthropy Connections tells you exactly what they intend to do with your sponsorship funds and where they will be allocated. They keep you well-informed about the progress throughout. For instance, they share when a student you supported has graduated, often including a note of thanks, or they are honest if a student whose education you financed found the studies too difficult. In such cases, they clearly indicate how much of the budget remains and consult with you on whether it may be used for another person or project.

By now, our trust in the organisation is so strong that we allow Philanthropy Connections to use our contribution wherever they believe it is most needed.

We wholeheartedly recommend Philanthropy Connections.

**Erika and Sjoerd van Belzen**

Long-term sponsors





## MESSAGE FROM A PROJECT PARTNER

My name is Ra Khin La, and I am the Education Project Coordinator at the Lahu Women's Organization (LWO), a community-based organisation supporting Lahu women, children, and ethnic internally displaced people in rural and conflict-affected areas of Myanmar. For the past seven years, I have worked to improve access to education by identifying communities most in need, supporting school construction and renovation, distributing learning materials, and assisting local teachers.

I do this work because I see how poverty, displacement, and limited resources prevent children from accessing safe and stable education. I believe education protects children, builds confidence, and creates a stronger future for both individuals and communities.

In 2025, the main challenges I faced included ongoing conflict, displacement, poverty, teacher shortages, and rising transportation and construction costs. Despite this, one of LWO's highlights is helping children continue learning through school construction and renovation, teacher support, and the distribution of essential supplies. We also supported displaced children to return to education.

In 2026, I hope to expand access to education, strengthen teacher support, and reach more displaced children through sustainable community partnerships. My guiding belief is: "When we support a child's education, we are not only changing one life, but strengthening the future of the entire community."

### **Ra Khin La**

Education Project Coordinator, Lahu Women's Organization



## VIDEOS OF THE YEAR



Piyawat faced many challenges from a young age. Raised by his grandparents since he was very young, continuing his education was not always easy. With scholarship support connected to Baan Wana Luang, and the encouragement of people who believed in him, Piyawat was able to keep learning, grow in confidence, and take meaningful steps towards his goals. His journey shows how steady support gives a young person not just access to education, but the chance to move forward with hope and determination.

Namploy's childhood was shaped by conflict in Myanmar, forcing her and her family to leave their home in search of safety. After escaping the war, they found a safe place to stay at Koung Jor Shan Refugee Camp, where Namploy was able to continue learning and begin rebuilding a sense of stability. With education, guidance, and steady support, she found space not only to study but also to dream of becoming a doctor so she can one day help others.



Pi grew up in a village with few educational opportunities and no school nearby. To continue learning, she had to travel far from home, a daily reminder that education is not equally accessible to every child. With scholarship support, Pi was able to keep studying, grow in confidence, and move closer to her dream of working in healthcare. Her story shows how steady support can help young people overcome distance, limited opportunity, and financial barriers as they take meaningful steps towards their future.





# Event

## SWISS NATIONAL DAY CELEBRATION

We were honoured to be the beneficiary of all fundraising events and activities hosted by the Swiss Lanna Society (SLS) in 2025. A highlight of this partnership was the Swiss National Day celebration at the Chiang Mai Marriott Hotel on 1 August. With Consul-General Jacques Baudevin as guest of honour, the evening was a significant occasion that brought together a community marked by generosity.

The funds raised through the event's tombola provide vital support for our work in combating poverty and creating lasting opportunities for children. This collaboration is part of a valued, ongoing relationship with the SLS. We are grateful for their enduring interest in our mission and their commitment to making a tangible difference alongside us, both now and in years past.



## FUNDRAISING THROUGH COMMUNITY ACTION

In 2025, fundraising for our mission took many forms. Throughout the year, supporters turned personal milestones, community activities, and individual challenges into meaningful resources for our projects. Whether directed toward a specific school or our general fund, these efforts allow us to respond where the need is greatest.

We are sincerely grateful to everyone who organises, hosts, or contributes to these campaigns. Your support provides practical care and opportunity to those who need it most. Every idea, no matter how simple, creates a tangible difference.

We hope the generosity shown in 2025 will inspire even more people to start their own fundraising campaigns in the future and help extend the reach of community-led change.



**HE RAN TO  
AND TO HELP  
FACING TODAY  
SURVIVED**

**HEAL,  
CHILDREN  
WHAT HE  
DECADES AGO**

**Carter Duong**  
PCF Goodwill Ambassador and spouse of the  
Dutch Ambassador to Thailand



STEPS FOR A BRIGHTER FUTURE



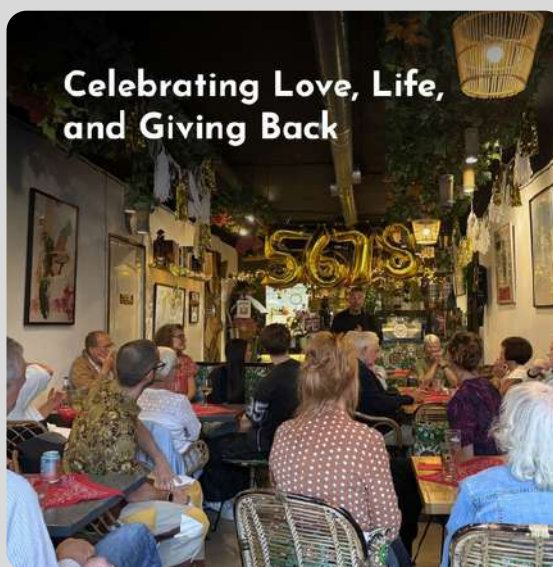
COMPLETING THEIR HALF-MARATHON



PCF Supporters Contribution: Sweet Support for a Good Cause



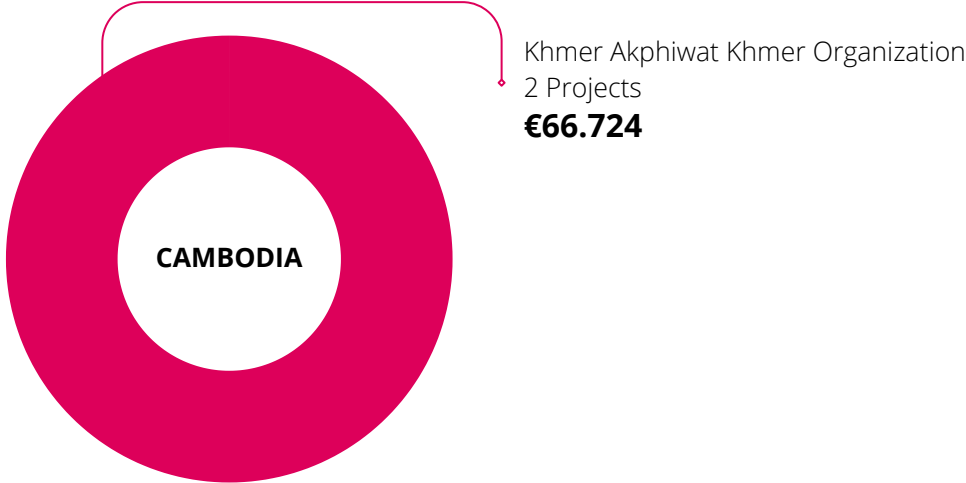
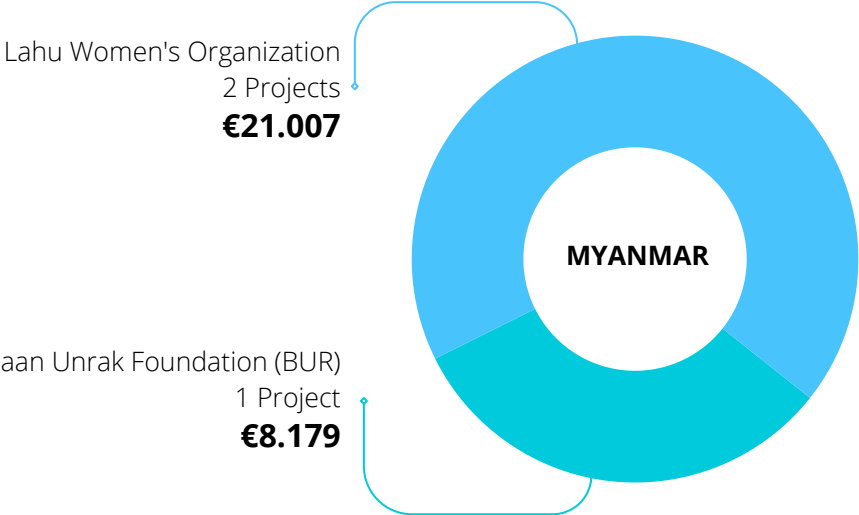
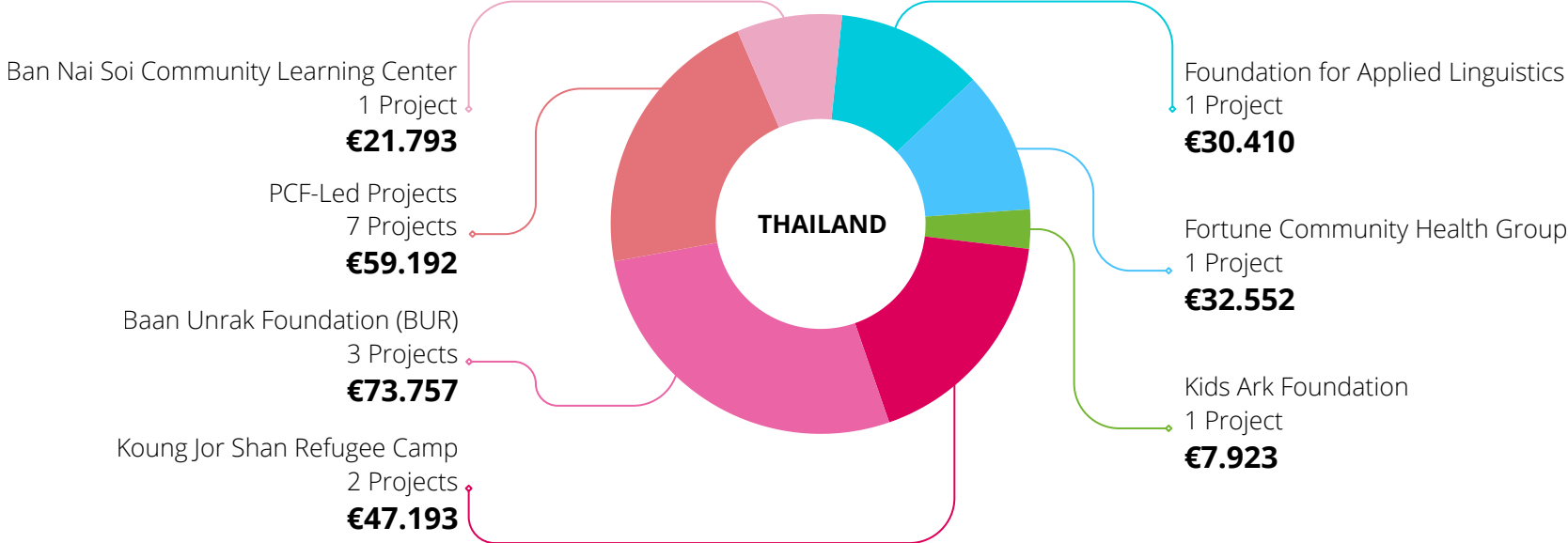
Tannarii & Jelle Wedding Fundraising Campaign for PCF



Celebrating Love, Life, and Giving Back



# Project Spending per Partner



**Notes:**

- The total project spending of €376.802, as mentioned in our financial statements, includes €8.072 directed to a special project in Indonesia.
- Project personnel costs assigned proportionally





## FINANCES

Consolidated statement of financial activities for the year ended 31 December 2025.

	EUR	EUR
<b>Total income</b>		<b>491.261</b>
Sponsor income	222.794	
Funding income	268.301	
Bank Interest	166	
<b>Total expenditure</b>		<b>564.511</b>
<b>Expenditure on Objectives</b>		<b>428.230</b>
Projects supported	376.802	
Personnel costs	38.585	
Travel and other related costs	3.787	
Allocated indirect costs	9.056	
<b>Expenditure as % of total income</b>		<b>87%</b>
<b>Expenditure on Fundraising</b>		<b>52.832</b>
Information and publicity	3.275	
Personnel costs	40.903	
Travel and other related costs	2.617	
Allocated indirect costs	6.037	
<b>Expenditure as % of total income</b>		<b>11%</b>

	EUR	EUR
<b>Management and Administration costs</b>		<b>83.449</b>
General costs	15.092	
Personnel costs	68.019	
Travel and other related costs	338	
<b>Expenditure as % of total income</b>		<b>17%</b>
<b>Result</b>		<b>-73.250</b>
Result on exchange rate		7.116
Designated funds - brought forward		144.767
<b>Designated funds - carried forward</b>		<b>78.633</b>



## EXPENDITURE ON OBJECTIVES

EUR

### **BNSCLC (Ban Nai Soi Community Learning Centre)**

Supplement to Teachers' Salaries 21.793

### **BUR (Baan Unrak Foundation)**

Educational Support for Underserved and Diverse Children from Baan Unrak 51.371

Dilip Kumar Dasgupta School for Displaced Children 8.179

Teachers Supplements for BUR Nursery School 8.916

Humanitarian Relief & Community Support 13.470

### **FAL (Foundation for Applied Linguistics)**

MTB-MLE Teacher Salary Support and Empowerment 30.410

### **FCHG (Fortune Community Health Group)**

Support for Loi Sam Sip School 32.552

### **KA (Kids Ark Foundation)**

Scholarships for Basic and Higher Education 7.923

### **KAKO (Khmer Akphiwat Khmer Organization)**

Preschools Support 34.977

Scholarships Project 31.747





EUR

**KJSRC (Koung Jor Shan Refugee Camp)**

Boarding House Running Costs	32.605
Stipends for Language Teachers	14.588

**LWO (Lahu Women's Organization)**

Education Support for Than Taung Gyi IDPs	7.732
Rice Distribution for Internally Displaced Persons (IDPs)	13.275

**PCF Emergency Projects**

Emergency Food Assistance for IDPs Along the Thai-Myanmar Border (Moei River)	633
Medical Costs for Migrant Child	28
Rice Distribution for Internally Displaced Persons (IDPs)	5.188
Hygiene Supplies - Earthquake Zone	1.689
Medical Support for Htet Myat Kyaw Project	966

**PCF Small Projects**

14 Small Projects	2.375
-------------------	-------



EUR

**PCF Scholarships Programme**

Scholarships for 4 students - Higher Education  
Chiang Mai Rajabhat University 18.490

Scholarships for 2 students - Higher Education  
Chiang Mai University 12.166

Scholarship for 1 student - Higher Education  
Lanna Polytechnic Chiang Mai Technological College 2.768

Scholarship for 1 student - Higher Education  
Mae Fah Luang University 2.853

Scholarships for 2 students - Higher Education  
Payap University 10.170

Scholarship for 1 student - Higher Education  
Srinakarinwirot University 1.519

Graduation Support - Chiang Mai Technical College 347

**KBSCF (Kurmia Budhi Santosa Charitable Fund)**

Special Project - Food, Basic Income & Education 8.072

Personnel costs 38.585

Travel and other related costs 3.787

Allocated indirect costs 9.056

**TOTAL 428.230**

# NOTES TO THE CONSOLIDATED FINANCIAL STATEMENTS

## Note 1 — Basis of Preparation (Accrual Basis)

The financial statements are prepared on an accrual and going concern basis for the financial year from 1 January to 31 December. Income and expenditure are recorded when they occur.

## Note 2 — Financial Position and Designated Funds

"Designated funds" represents the Foundation's net funds (total assets less total liabilities), not the cash available. The position at 31 December 2025 was:

Statement of Financial Position (EUR)	2025
<b>Assets</b>	
Cash in Bank	49.502
Fixed Assets	11.847
Other Assets	113.989
<b>Total Assets</b>	<b>175.338</b>
<b>Liabilities and Funds</b>	
Liabilities	91.319
Founding funds	5.386
Unrestricted funds	78.633
<b>Total Liabilities and Funds</b>	<b>175.338</b>

## Note 3 — Funds Payable to Projects

Liabilities include funds committed to partner projects that had not yet been paid out at year-end. These are future obligations rather than available surplus.

## Note 4 — Consolidation

Transactions between the Dutch and Thai entities are eliminated on consolidation. Funds transferred from the Dutch foundation to the Thai foundation are removed so they are not counted twice.

## Note 5 — Exchange Rates

Two exchange rates are used: an average rate of THB 1 = EUR 0.02752 for the statement of financial activities, and the year-end rate of THB 1 = EUR 0.02693 for assets and liabilities. Foreign exchange gains and losses are shown separately and are not part of the operating result.

## Note 6 — Payroll

Payroll costs are divided into three categories: Expenditure on Objectives, Expenditure on Own Fundraising, and Management and Administration costs.

## Note 7 — Board Approval

The 2025 Audit Report was approved by the Thai Board on 25 March 2026, and the 2025 Consolidated Financial Statements were approved by the Dutch Board on 27 June 2026.



# OUR BOARD



**SALLO POLAK**  
Chairman

## THAI BOARD



**BEN SVASTI THOMSON**  
Secretary



**YING CHARM HOM**  
Treasurer

## DUTCH BOARD



**ROB RIJNDERS**  
Secretary



**PAUL OVERDIJK**  
Treasurer

## MEET OUR TEAM

The faces on this page represent the daily, on-the-ground presence of the foundation. We are a small, dedicated team living and working in the region, ensuring that every project is built on personal trust and mutual respect.



**SALLO POLAK**  
Founder & Executive Director



**DJ ROBERTSON**  
Chief Operating Officer



**PAH PANITNANTANAKUL**  
Finance & Accounting Manager



**KRIST INMANEE (TON)**  
Teams Support Officer



**ADAM LAWRENCE**  
Monitoring & Evaluation Officer



**SATHIRAVIJA HEEBTHONG (EARTH)**  
Programme Coordinator



**ZAW MOON RA (ARRA)**  
Communications Team Manager



**SARAWUT PENGSANNOO (O)**  
Communications Officer



**PHONG CHANGYUE**  
Media Officer



**KANYARAT PINYONITCHAKUL (KAN)**  
Administrative Officer



**SUWANNEE POTIPAPO (WAN)**  
Mae Baan



**SOE THURA AUNG (STEPHAN)**  
Programme Manager



**SAW KYAW SOE WIN (WIN)**  
Programme Officer

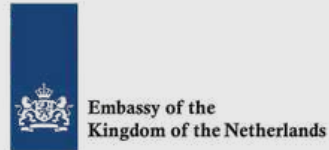


**SAI PEE (BEE)**  
Programme Coordinator



**KHUN KHAM RHUR (KHUN)**  
Programme Coordinator

# OUR SPONSORS AND SUPPORTERS





Support Our Work



philanthropyconnections.org



**Stichting Philanthropy Connections**

Bilderdijkkade 3-H  
1052RS Amsterdam  
The Netherlands

RSIN / Tax Number (NL): 851226784

**Philanthropy Connections Foundation**

62 Wongwaen Road, Chang Phueak,  
Mueang Chiang Mai, 50300, Thailand

Tel. +66 (0) 52 005 779

Tax ID: 0 9930 00366 52 2

[philanthropyconnections.org](http://philanthropyconnections.org)

[info@philanthropyconnections.org](mailto:info@philanthropyconnections.org)