

HOPE

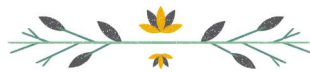
Supervised Contact
Keeping Kids Connected

p. 1300 045 020

www.hopefamilycottage.com.au



Our Fees & Associated Costs

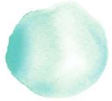


Experience.
THE
Difference.

HOPE

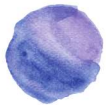
Supervised Contact

Our Fees - Supervised Children's Contact Services



Parental/Carer Intake Assessments (by phone)

\$145 each - Monday to Friday Only



1 Hour "Getting to Know You" Child Familiarisation Session

\$145 - Monday to Friday Only



2 Hour Supervised Contact Visits

\$220 - Monday to Friday

\$270 - Saturday

\$360 - Sunday

\$540 - Public Holidays



Facilitated Changeovers (Compulsory with All Supervised Visits, also available as a stand alone service)

Monday to Friday

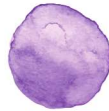
\$55 (\$27.50 per changeover)

Saturday

\$67.50 (\$33.75 per changeover)

Sunday

\$90 (\$45 per changeover)



Supervised Contact Visit Reports (Compulsory for all Contact Visits)

\$110 for Contact Visits up to 2 hours
+ \$55 per Additional Contact Visit Hour



Staff Travel & Child Transport

Hourly Staff Rates Apply for Return Travel
from our closest Contact Centre, plus
\$1.30/km from Contact Centre Return;
Tolls & Parking Fees - At Cost



Facilitated Changeovers Only

Monday to Friday

\$110 (\$55 per changeover)

Saturday

\$135 (\$67.50 per changeover)

Sunday

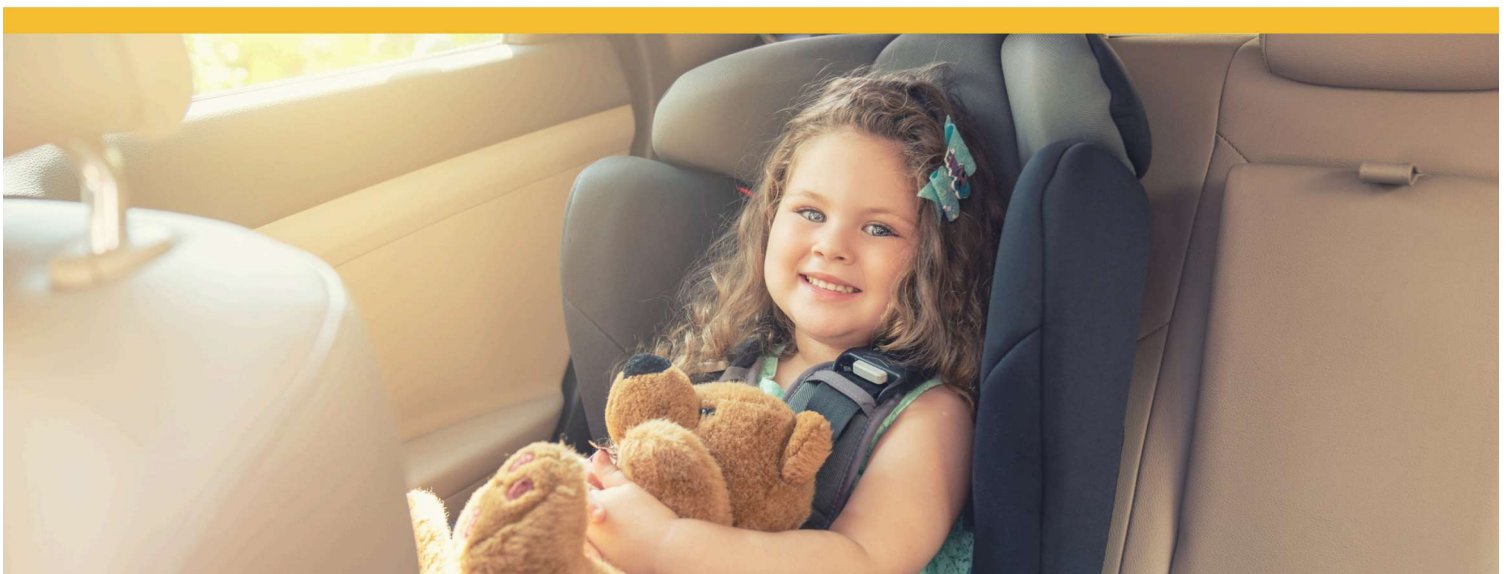
\$180 (\$90 per changeover)

*Plus return travel time & KM's from
Hornsby or Wyong, whichever is closest to
changeover location(s)



Stand-Alone Changeovers Only Reports (If Required. Not Compulsory)

\$55/Changeover



HOPE

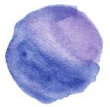
Supervised Contact

Our Fees - Supervised Children's Contact Services



Supervision Staff Rates

\$110/hour - Monday to Friday
\$135/hour - Saturday
\$180/hour - Sunday



Producing Documents for Court by Subpoena

\$750 Fixed Fee Conduct Money
(up to 12 months of service provided)
\$1,500 Fixed Fee Conduct Money
(12+ months of service provided)



Court Attendance/Appearance

\$180/hour
Billed for every 15 mins/part thereof. Plus travel costs, minimum 4 hour charge applies.
Payable by the Parent/Party issuing the Subpoena.



Meetings & Consultations with Management Between Supervised Contact Visits - By Appointment Only

\$180/hour - Monday to Friday Only
(billed for every 15 mins/part thereof, plus travel costs, if required).

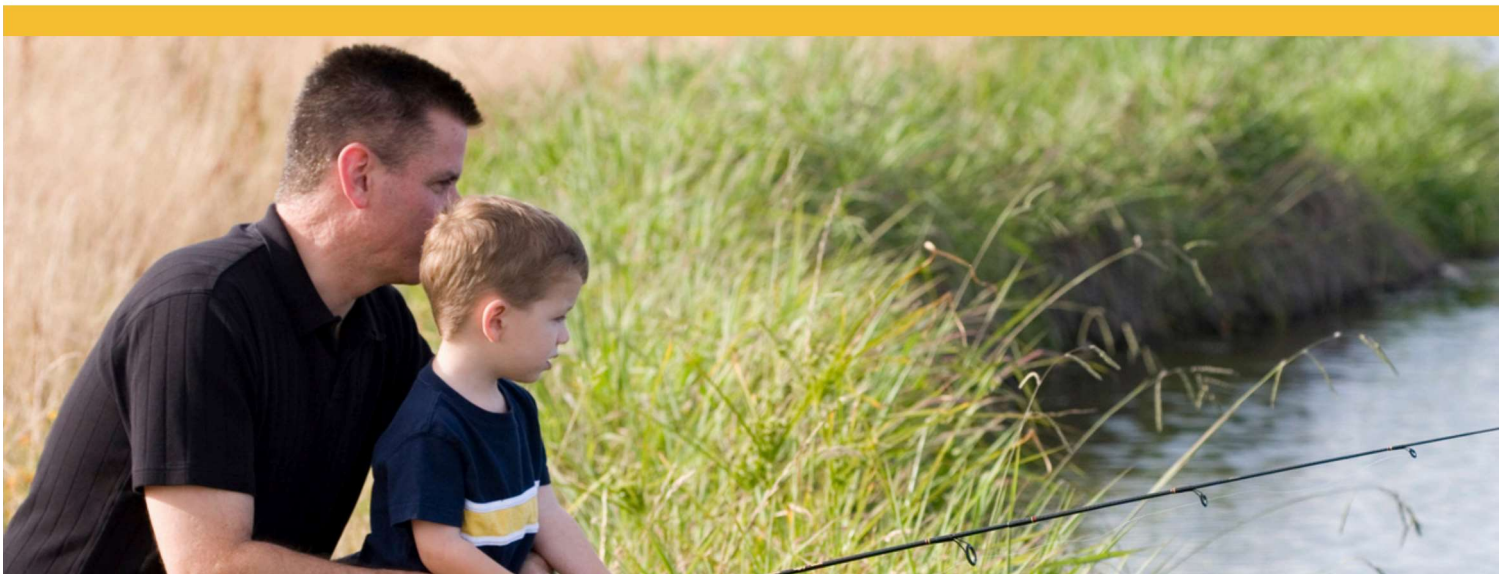


Administration Fees

\$90/hour - Monday to Friday Only
(billed for every 15 mins/part thereof, plus any costs incurred).
Payable by the initiating Parent/Party.
Fees apply for admin time to reschedule/change confirmed booking details, correspond with Legal Representatives or any other authorised third party, incl. mails, phone calls, meetings etc.

NOTE:

1. Our fees allow for supervision of up to three children only (exceptions apply) by one Contact Supervisor.
2. Additional fees apply if more than three children are attending any Supervised Contact Visit as an additional Contact Supervisor is required. Refer to our Staff Hourly Rates.
3. All community, home or other off-site services attract fees for return travel from Hornsby or Wyong. (i.e., staff hourly rate, km's, tolls & parking fees etc.), in addition to fees for the service provided in which the travel is required.
4. All prices are subject to GST.
5. Fees are not negotiable.
6. Services provided outside of our operating hours attract after hours rates.
7. Our standard hours of operation Monday to Friday are 9am-5pm, Saturday 9am - 4pm, Sunday 10am-4pm, Public Holidays 10am-4pm. However, services are available 24 hours a day, 7 days a week.
8. No services are provided without payment being received by us in full beforehand.
9. We do not accept cash.



HOPE

Supervised Contact

Our Fees - Family Dispute Resolution



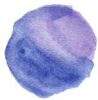
Intake Assessments

- 1 hour per parent
\$300/ parent



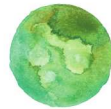
Section 60I Certificate (if required)

Included in Intake Assessment Fee



Family Dispute Resolution/Mediation Sessions

- 4 hours only
\$600/parent Monday - Friday
\$900/parent - Saturday
\$1,200/parent - Sunday



Preparation of Parenting Agreement/ Parenting Plan

\$150/parent



Family Dispute Resolution/Mediation Co-Mediated Sessions-

4 hours only
\$1,200/parent Monday - Friday
\$1,800/parent - Saturday
\$2,400/parent - Sunday



Travel Expenses

- charged per 15 mins
\$75.00/hour (Monday - Friday)
\$100/hour (Saturdays)
\$150/hour (Sundays)

NOTE: Some matters may require more than 1 mediation session. Prices are subject to GST.

Tolls, parking fees, accommodation, meals & all other out of pocket expenses are charged at cost.

