



BOSPHORUS PALACE
HOTEL

SUSTAINABILITY REPORTING

Document No	TL.004
Publication Date	03.11.2023
Revision No	RV.002
Revision Date	14.11.2025



BOSPHORUS PALACE OTEL 2026 SUSTAINABILITY REPORT

İçerik

1.	About Us.....	2
2.	Facility Introduction and Facility Features	2
3.	Sustainability Policy	4
4.	Energy Management.....	5
5.	Waste Management	6
6.	Reducing Environmental Impacts	7
7.	Personnel and Working Life	8
8.	Social Activities Conducted	8
9.	Conservation of Natural Life and Cultural Heritage	8

1. About Us

As of 2023, we have begun our sustainability efforts. In line with this, we aim to share the progress we have achieved with our management, employees, guests, suppliers, and all our other partners, thereby increasing the awareness we create in this area and transforming it into shared goals and achievements.

This sustainability report includes data covering the 2025–2026 period.

2. Facility Introduction and Facility Features

The structure was designed by the French-Ottoman architect Alexandre Vallaury and was used as the mansion of “Debreli İsmail Pasha” between 1876 and 1909. The waterfront mansion, which burned down on March 14, 1983, was reconstructed between 1993 and 1996 by "Yalı Turizm Yatırımları ve İşletme A.Ş." in accordance with the original design, based on relief projects and old photographs. With the allocation and approval of the Ministry of Tourism, it was designated as the "Bosphorus Palace Hotel."

Debreli İsmail Pasha Waterfront Mansion is one of the finest examples of Neo-Ottoman architecture. The building has a floor area of 300 m² and stands on a plot of 1,486 m². At that time, the garden side of the mansion was used as the harem section, while the waterfront side was reserved for men.



Our hotel features 12 rooms, each with unique decorative details, and 7 different room types. The rooms stand out with their high ceilings and wall ornaments, while the furniture is crafted with Italian workmanship and covered in 18-karat gold leaf. Each of our bathrooms has been carefully designed with large mirror decorations and refurbished furnishings. The section of the mansion that was previously used as a boathouse was renovated and converted into the hotel restaurant.

Our hotel offers restaurant services as well as special event organization services for meetings, weddings, engagements, and similar occasions. Bosphorus Palace Hotel is a historic waterfront mansion located on the Beylerbeyi shoreline, whose unique Bosphorus view will fill you with peace and tranquility. Dating back to the 1800s, the mansion reflects one of the finest examples of Neo-Ottoman architecture. In our hotel, whose building covers 300 square meters and whose grounds span 1,486 square meters, we organize events that make every moment of our couples' special days unforgettable. In addition, our extensive transportation network, ranging from public transportation to sea transportation, is one of the features that provides convenience for our guests.



3. Sustainability Policy

Bosphorus Palace Hotel uses the following methods to effectively communicate its sustainability management policies to employees, suppliers, stakeholders, and customers:

1. For Employees:

- o Organize internal training programs to explain sustainability policies to employees and emphasize their importance.
- o Share the policies by using announcements and internal communication tools within the relevant departments.
- o Create internal newsletters that regularly provide employees with up-to-date information on sustainability performance.

2. For Suppliers:

- o Organize supplier meetings to share sustainability expectations and policies.
- o Include sustainability criteria in supplier contracts.
- o Establish supplier communication platforms to maintain an ongoing dialogue on sustainability.

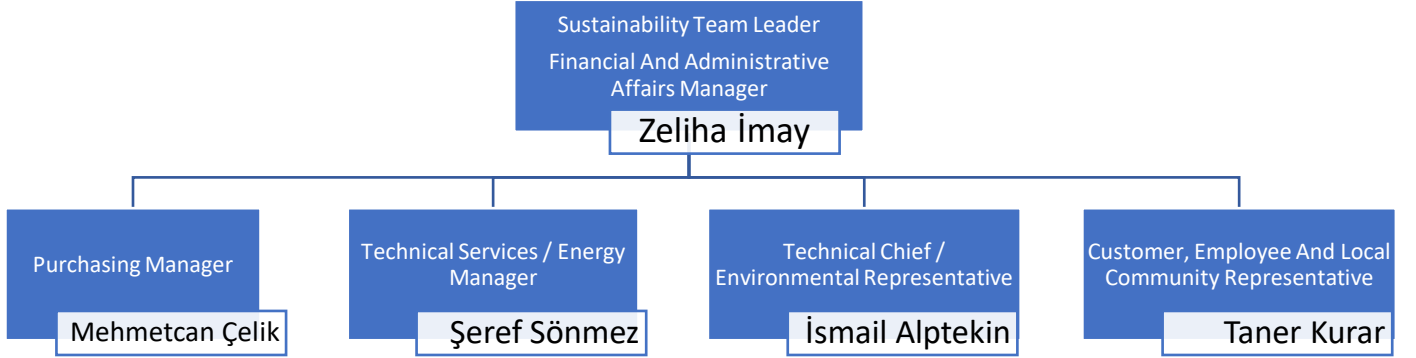
3. For stakeholder:

- o Yıllık sürdürülebilirlik raporları yayınlayarak, paydaşlara kuruluşun sürdürülebilirlik performansını açıklamak.
- o Topluluk toplantıları ve etkinliklere katılarak, yerel topluluklar ve diğer paydaşlarla birebir etkileşimde bulunmak.
- o Sosyal medya ve kurumsal web sitesi üzerinden düzenli güncellemelerle paydaşları bilgilendirmek.

4. For Customer:

- o Explaining the hotel's sustainability policies to customers through information boards, brochures, and other materials.
- o Creating a sustainability page on the website to inform guests about the hotel's sustainability commitments
- o Sending sustainability-related information to customers via email newsletters and booking confirmations.

Sustainability Team



4. Energy Management

Electricity Consumption

Our Goal is:

Achieving a 2% per capita energy saving by 2025,

- Continuing to develop energy consumption reduction projects,
- Continuing to purchase energy-efficient appliances,
- Replacing older appliances with energy-efficient ones,
- Raising awareness among staff by continuing energy saving training every year.

Water Consumption

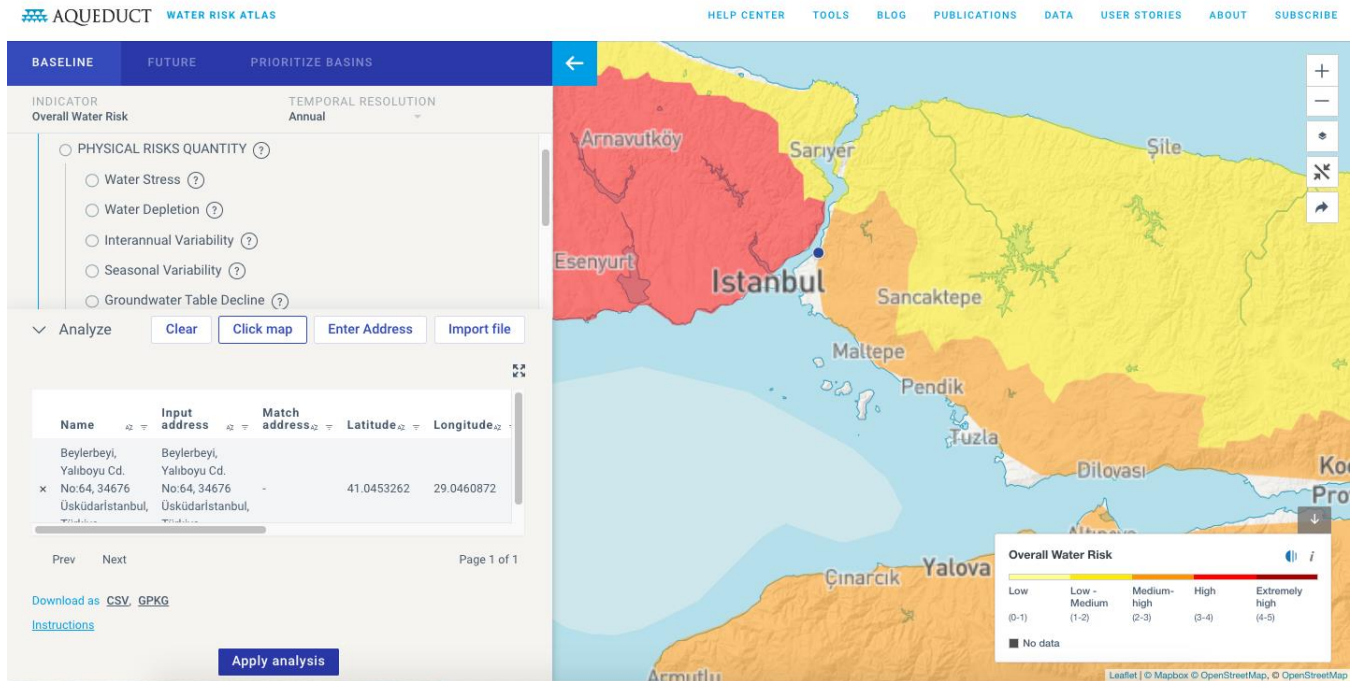
We use water-saving equipment to reduce overall water consumption without compromising health, hygiene, and guest satisfaction; we place informative visuals about water conservation in guest rooms and common areas; and we train our staff on this subject.

The following activities regarding water saving are carried out in our hotels and their continuity is ensured.

- Water flow limiting equipment is used in taps and showers.
- There are labels to reduce water consumption.

Our goal is:

- To reduce per capita water consumption by 3% compared to 2024,
- To increase staff training on water conservation,
- To ensure staff receive training in sustainability.
- Water risk is being calculated.



Carbon Emissions

We will prefer products produced using low-carbon, climate-friendly methods and use energy efficiently.

We will increasingly use public transportation systems, plan vehicle routes and transportation, and choose fuel-efficient vehicles.

We will take measures to reduce our consumption and provide more support for recycling. We will prefer suppliers who support recycling.

We will take measures to do more with less energy. We will also pay attention to the energy efficiency class when purchasing a product.

We will make greener choices. We will offset our carbon footprint and contribute more to energy efficiency. We aim to eliminate our carbon footprint through various activities, primarily tree planting.

5. Waste Management

RECYCLABLE WASTE

At BOSPHORUS PALACE HOTEL, we prioritize protecting the environment, preventing pollution, and minimizing our negative impact on it. To this end:

- We comply with legal regulations and strive to reduce our environmental impact.
- We take care to effectively separate our waste according to its source, groups, and hazard classes.
- We know that using hazardous materials and chemicals only when necessary and in the required amount will reduce both their negative impact on the environment and the amount of waste.
- We contribute to protecting nature by preferring materials with "recycling" and "eco-friendly" labels in our business. We try to create opportunities for reuse.
- We take care to use single-use materials such as paper, napkins, toilet paper, and packaging only as needed, leaving less waste in nature.

- We store waste correctly in separate areas according to its characteristics, deliver it to licensed/authorized companies without exceeding legal storage time limits, and keep records.
- We strive to use water, energy, and all natural resources efficiently. We share this sensitivity with our employees, guests, and suppliers.
- We measure our performance in environmental management, monitor this data with targets, and strive to improve our performance.
- We aim to educate our employees on environmental issues and raise their awareness.

HAZARDOUS WASTE

To ensure that hazardous waste generated at our facility is disposed of without harming the environment, hazardous waste from our departments is collected in hazardous waste containers under appropriate conditions, labeled, and delivered to licensed companies for legally compliant disposal or processing.

Our goal is:

- To further reduce the amount of hazardous waste generated by 2025.

VEGETABLE WASTE OIL

We are increasing the amount of used vegetable oil that we recycle every year. The generated used vegetable oil is regularly given to licensed companies with whom we have agreements.

Our goal is:

- To increase the amount of used vegetable oil recycled compared to previous years
- To raise our staff's awareness about waste oil.

CHEMICAL CONSUMPTION

We control the amount of chemicals we use and provide staff training to prevent waste and improper chemical use.

- We train our employees on the use of chemicals and the precautions to be taken in case of spills/spills of hazardous chemicals.
- A chemical measurement system will be implemented in the laundry area of our hotel.

6. Reducing Environmental Impacts

We have adopted a management approach that involves reviewing our responsibilities at every stage to our employees and guests. In line with this, we have established an "environmental policy" to protect and ensure the sustainability of the environment in which we live, and we aim to improve our current situation every day by planning our business processes accordingly and analyzing their results. To achieve these goals, we comply with and fulfill all requirements of the current environmental laws, regulations, and legislation, and we continuously improve our activities and ourselves. Protecting the environment and leaving it clean and healthy for future generations is of great importance to us. To prevent environmental pollution and contribute to the recycling of recyclable waste, we have implemented zero-waste bins in our hotel. Furthermore, empty packaging contaminated with chemicals from the technical department and cleaning materials, and used vegetable oil from food preparation in the kitchen, are collected and sent to licensed companies for recycling.

7. Personnel and Working Life

Our employees are aware of their responsibilities within our management system and sustainability policies and practices. Their duties are defined in writing, communicated to them, and regular training and guidance are provided. These training sessions are recorded. Our employees actively participate in the development and continuous improvement of our management system and sustainability performance. We review and improve our system based on feedback from our employees. Our hotel has 30 staff members, 16% of whom are women. Our managers and chefs are generally employees who have worked for our company for many years. We do not currently have any foreign nationals working at our hotel. We cater to guests from diverse nationalities. Discrimination based on nationality, race, language, etc., is contrary to both our hotel management and our work principles.

8. Social Activities Conducted

To increase the motivation of our employees and foster team spirit, we carry out several activities within the company, including:

- Distributing gifts and souvenirs on special occasions,
- Ensuring timely payment of salaries and employee entitlements,
- Providing educational support to employees' children of school age.
- In addition to the services it provides, our hotel also monitors social, physical, and environmental conditions to ensure social compliance.
- Compliance with laws and other obligations
- Prevention of forced and compulsory laborÇalışma saatleri
- Discipline, prevention of harassment and ill-treatment
 - Payments and rights
 - Ensuring occupational health and safety
 - Prevention of environmental pollution.

9. Conservation of Natural Life and Cultural Heritage

We are aware of our responsibility in preserving local culture and values. In this context, we are highly sensitive to and involved in activities related to cultural promotion and the employment of local people.En güzel kartpostallara konu olan İstanbul, her yıl milyonlarca yerli ve yabancı birçok misafiri ağılamaktadır.

LIST OF CULTURAL HERITAGE AND NATURAL SITES

- - Ionnes Studios Church on the Bosphorus
- Belgrade Forest, Pera Palace Hotel
- Topkapi Palace, Çemberlitaş Column
- Archaeological Museum, Pantokrator Church
- Grand Bazaar, Valens Aqueducts
- Islands, Constantine Column (Woven Column)

- Sultanahmet Mosque, Theotokos Kiriottissa Church
- Hagia Sophia, Pammakaristos Church
- Rumeli Fortress, Arcadius Column (Avrat Taşı)
- Dolmabahçe Palace, Topkapi Palace, Beylerbeyi Palace
- Basilica Cistern
- Maiden's Tower, Galata Tower
- St. George Monastery
- Eyüp Sultan Mosque
- Haydarpaşa Train Station
- Aynalıkavak Palace
- Botter Apartment
- Former Egyptian Consulate
- Vlorë Han
- Nuruosmaniye Complex
- Egyptian Apartment
- Ralli Apartment

Dolmabahçe Palace



About 400 years ago, the area where Dolmabahçe Palace now stands was the largest bay on the Bosphorus. However, it gradually turned into a swamp and was therefore filled in during the 17th century. Later, this derelict area was transformed into a private garden, and the structures built on it came to be known as the Beşiktaş Coastal Palace. However, after these structures were demolished by Sultan Abdülmecit, the Dolmabahçe Palace, which stands before us today in its splendor, was built in its place. Construction of the palace began in 1843, and since then it has been one of Istanbul's most beloved architectural structures.

Topkapi Palace



Topkapi Palace, one of the largest palaces in Istanbul, was built by Sultan Mehmed the Conqueror and was first opened to the public as a museum by Sultan Abdülmecit. The Ottoman dynasty ruled the empire from this palace, which forms a complex of various buildings, for 400 years.

Ayasofya



Built between 532 and 537 AD by Byzantine Emperor Justinian I, Hagia Sophia was used as a church until the conquest of Istanbul by Mehmed the Conqueror. From 1453 onwards, it was converted into a mosque and used as such during the Ottoman period. Later, in 1934, it was opened to the public as a museum and continues to welcome visitors as such today. You haven't truly seen Istanbul without visiting Hagia Sophia, one of the city's most magnificent structures.

Yerebatan Cistern

Built between 527 and 565, the Basilica Cistern was constructed to transport water to the palaces located in the nearby area. The Medusa head statue used in its construction has given the cistern a completely different historical significance. Today, you can visit the cistern as a museum, and many cultural activities are also organized there. And while you're there, don't forget to throw a coin into the water and make a wish!

Kız Tower

There are many legends surrounding the Maiden's Tower, located off the coast of Salacak in the Bosphorus, and how and why it was built. This mysterious structure, full of stories, has become one of Istanbul's symbols and a popular spot, especially for lovers. You can visit the tower, which currently houses a business, and enjoy a coffee in the middle of the Bosphorus.

Mısır Market

The Spice Bazaar (Mısır Çarşısı), one of the structures where you can experience the spirit of old Istanbul in its entirety, was built in 1600 by Turhan Sultan. This colorful bazaar, filled with herbalists, delicatessens, and many tourist souvenirs, still welcomes thousands of visitors with the same warmth every day of the week. If you want to lose yourself for hours, this is the place for you.

Galata Tower

Built in 528 by the Byzantine Emperor Anastasius, the Galata Tower is one of the oldest towers not only in our country but also in the world. Originally designed as a lighthouse, it was used as a shelter during the Ottoman period and finally transformed into a fire watchtower. This famous tower, where Hezarfen Ahmet Çelebi practiced flying with wings during the reign of Murad IV, was included in the UNESCO World Heritage Tentative List in 2013.

St. George Monastery

Located on the 204-meter-high Yüce Tepe (High Hill) on Büyük Ada (Big Island), the largest of the Princes' Islands, the St. George Monastery remains one of Istanbul's most visited structures. Built in 1751 and named after Saint George of Cappadocia (Aya Yorgos-Aya Yorgi), who was martyred for his Christian faith in the 3rd century AD, this structure is considered by Christians as a 'holy place' where wishes are fulfilled and is regarded as the second pilgrimage site in Turkey after the House of the Virgin Mary in Ephesus. Eyüp Sultan Mosque

Built in 1458, shortly after the conquest of Istanbul, the Eyüp Sultan Mosque is the first mosque in Istanbul. Located in the Eyüp district, right on the shores of the Golden Horn, the mosque has been a popular destination for visitors for centuries, especially during Ramadan and on Fridays. Next to the mosque is the tomb of Eyüp Sultan (Hazrat Khalid bin Zeyd Abu Ayyub al-Ansari) and the first complex of buildings in Istanbul. Due to the respect felt for Eyüp Sultan, all sultans' sword-girding ceremonies were held at the Eyüp Sultan Tomb, and the structure therefore holds great importance.

Haydarpaşa Train Station

Construction of Haydarpaşa Train Station, which began on May 30, 1906, is one of the most important works of the reign of Sultan Abdul Hamid II. Two German architects and 500 Italian stonemasons worked on the building for two years, and it was completed in 1908. Haydarpaşa Train Station, which marks the beginning of the Istanbul-

Baghdad Railway line and connects Anatolia to Istanbul, was named after Haydar Pasha, who greatly supported the construction of the Selimiye Barracks. Aynalıkavak Palace

The Aynalıkavak Palace was built in the Baroque style between 1703 and 1730 by Ahmed III. Located on the Hasköy coast, it is the only surviving structure from the group of pavilions and mansions known as the "Shipyard Palaces." The building's name comes from the valuable large mirrors gifted to Ahmed III by the Venetians.

Botter Apartment

The Botter Apartment, built by Raimondo D'Aronco for Jean Botter, is located on İstiklal Street. Built in the 1900s, this apartment building is actually a fashion house. The building houses shops, apartments, and workshops. The building was constructed using the most advanced techniques of the time. In this Art Nouveau style apartment, it is possible to find numerous motifs such as human heads and plants. These motifs were designed by D'Aronco.

Beylerbeyi Palace

Built between 1861 and 1865 by Sarkis Balyan for Abdülaziz, this palace is one of the important structures that have survived from the Ottoman era to the present day. The palace is of great importance both for its summer use and for hosting important guests. Today, it is possible to see the furniture, unique gifts, and more inside the palace. The building is one of the important works of the Baroque style.



Former Egyptian Consulate

This building, formerly the Egyptian Consulate and now owned by Egypt, was designed by an Australian architect. Two other buildings previously stood on this site. The first was the mansion of Dürrizade Arif Efendi, and the second was the mansion of Rauf Pasha. The land was purchased by Princess Emine, the mother of the Egyptian Khedive Abbas Hilmi Pasha. The current building features a rich ornamentation scheme consisting of crowns, festoons, and ribbons adorned with coats of arms and floral cornices on its side and sea facades. The building is currently empty and neglected.

Vlora Han

Vlora Han is a building that saddens many due to its empty and neglected state. Located at the intersection of Fincancılar Street and Vasif Çınar Street, Vlora Han is an exquisite building. The side facades feature elegant railings, while the main facade has bay windows and balconies. This caravanserai, built in the Art Nouveau style, was designed by the famous Italian architect D'Aronco in the early 20th century.

Nuruosmaniye Complex

Located in Fatih, the Nuruosmaniye Complex is one of the first works in the Ottoman Empire to bear traces of Baroque architecture. In this structure, the classical Ottoman form is synthesized with the Western Baroque style. This structure, which has preserved its splendor for over 260 years, is a reflection of the increasing diplomatic, cultural, and commercial relations of the Ottoman Empire with the West in the 18th century. The Nuruosmaniye Mosque was built in 1748 by Sultan Mahmud I, and the complex was completed in 1755 by Osman III.

Mısır Apartment

Built in the early 1900s by Abbas Halim Pasha and designed by architect Hovsep Aznavuryan, the Mısır Apartment is located on your left as you walk from Galatasaray to Tünel. Bearing the traces of the First National Architectural Period, Art Nouveau motifs are frequently seen in this building.

Ralli Apartment

One of Istanbul's most important and special historical buildings, the Ralli Apartment represents Art Deco and Art Nouveau styles. Fahrelnisa Zeid, one of the pioneers of abstract painting in Turkey, held her first and second solo exhibitions here.

Pera Palace Hotel

The Pera Palace Hotel was built in the late 1800s to meet the luxurious accommodation needs of high-class passengers arriving in Istanbul with the start of service of the Orient Express, which operated between Paris and Istanbul. It quickly became a favorite spot for important diplomats, statesmen, and writers from different countries. The hotel is located on a hill overlooking the Golden Horn. The Pera Palace Hotel is also the first building in Istanbul to have an electric elevator and a hot water network. [Click here for detailed information about the Pera Palace Hotel: Pera Palace Hotel](#)

Çemberlitaş Column

Built in honor of Emperor Constantine I in 330 AD, the structure is located in the Çemberlitaş district. The structure consists of 8 columns and a base. These columns are connected to each other by rings weighing 3 tons and with a diameter of 3 meters.

Pantokrator Church

The Pantokrator Church, known today as the Zeyrek Mosque, carries the meaning of "Almighty," one of the attributes of Jesus. You can see the structure on your way to the Valens Aqueduct. The structure is one of the largest Byzantine works in Istanbul. After the conquest, it was used as a madrasa (Islamic school).

Valens Aqueducts

This structure, known today as the Bozdoğan Aqueduct, was built by Valens. It is 20 meters high, has two levels, and is one kilometer long. Water was brought from the Belgrade Forests via this aqueduct and transported to a pool called the Great Fountain.

Ayasofya

Ayasofya, meaning "Holy Wisdom," holds a very important place in world heritage and architectural history. Along with the Hagia Irene Church (Holy Peace) located immediately behind it, it reflects the attributes of Jesus. This structure was completed in 5 years with 10,000 workers and 100 masters. The building was converted into a museum during the Atatürk era. Today, it is one of the most important symbols of interreligious tolerance.

Constantine Column (Woven Column)

The exact construction date of the Constantine Column is unknown. Therefore, it is named after Constantine, who restored the work in the 10th century. At one time, the column was covered with bronze plates decorated with gold letters. However, it is not possible to see these plates today. Because it is known that the plates were looted by the Crusaders.

Pammacaristos Church

The Pammacaristos Church, built in the 12th century by John Komnenos and his wife, was used as the Greek Orthodox Patriarchate for a time. Located in the Fatih district, this church took the name Fethiye Mosque with the conquest of Azerbaijan and Georgia during the reign of Murad III. Pammacaristos means "God's joyful mother". The mosaics inside are as important as those of Hagia Sophia and Kariye.

Istanbul Bosphorus

One of the most popular activities for visitors who come to Istanbul for cultural tourism is a Bosphorus cruise. These tours are a wonderful way to understand and truly experience Istanbul. By joining Bosphorus cruises organized in Istanbul, it is possible to see some of the most important elements of Istanbul's culture in their most beautiful form. These include structures such as Rumeli Fortress, Anadolu Fortress, Büyük Mecidiye Mosque, Küçüksu Pavilion, Beylerbeyi Mosque, Esmâ Sultan Mansion, Hagia Sophia Museum, and Galata Tower, along with many more cultural landmarks.

Belgrad Forest

Belgrad Forest is one of the most important green areas in Istanbul. It is a popular destination where residents of the city often go to escape from urban life and enjoy nature. Historically, this forest played a crucial role in supplying drinking water to Istanbul during both the Byzantine and Ottoman periods. With its historical significance and its importance as a recreational and picnic area for Istanbul residents, Belgrad Forest is considered one of the must-visit natural attractions in the city.

Istanbul Archaeology Museums

The Istanbul Archaeology Museums, affiliated with the Republic of Türkiye Ministry of Culture and Tourism, are located in Sultanahmet. Inherited from the Ottoman Empire to the Republic of Türkiye, this museum offers a remarkable opportunity to understand and observe the early development of museology in the country. Following the appointment of Osman Hamdi Bey as museum director in 1881, archaeological excavations were carried out in sites such as Mount Nemrut, the ancient cities of Lagina, Kyme, and Myrina, and many artifacts from these excavations were brought together in this museum. The Istanbul Archaeology Museums are among the first museums in the world designed and built specifically as museum buildings.

Grand Bazaar

The Grand Bazaar, one of the oldest and largest covered markets in the world, has a history of approximately 550 years. For centuries, it has served both locals and visitors to Istanbul. Today, it remains a key cultural shopping destination where visitors can find many items reflecting Istanbul's heritage. Inside the bazaar, there are jewelers, souvenir shops, leather and imitation goods stores, and many more traditional merchants.

Princes' Islands

The Princes' Islands are one of the most visited destinations for tourists coming to Istanbul. The archipelago consists of nine islands, among which Büyükada, Heybeliada, Burgazada, and Kınalıada are the most frequently visited and accessible. The islands are historically significant for understanding both the summer retreat culture of Greek and Armenian communities, as well as their use as places of exile and settlement during the Byzantine and Ottoman periods.

Blue Mosque (Sultan Ahmed Mosque)

The Blue Mosque, located directly opposite Hagia Sophia, is one of the most admired landmarks by visitors to Istanbul. It is one of the city's most important architectural masterpieces. Commissioned by Ottoman Sultan Ahmed I and built between 1609 and 1616, it is a classical example of Ottoman architecture. It was the first imperial mosque built with six minarets. Although not designed by Mimar Sinan himself, it was built by his student Sedefkar Mehmed Agha, and therefore reflects strong influences of Sinan's architectural style.

Rumeli Fortress (Rumeli Hisarı)

Rumeli Fortress holds great historical importance for the conquest of Istanbul. Before the siege in 1453, earlier attempts to capture the city had been prevented by the strong Roman-era city walls. However, the construction of Anadolu Fortress and Rumeli Fortress—built for seemingly different purposes—played a crucial role in facilitating the conquest of Istanbul. Due to its historical significance, it is considered one of the key sites that should be visited in the city.

Beyoğlu

Beyoğlu is one of the districts located on the European side of Istanbul and is a must-visit area due to its rich cultural heritage. It is an important place for understanding old Istanbul, its historical value, and its elegant character. Visitors can experience many significant historical and cultural elements of the city, making Beyoğlu a key destination for those who want to explore Istanbul's heritage.