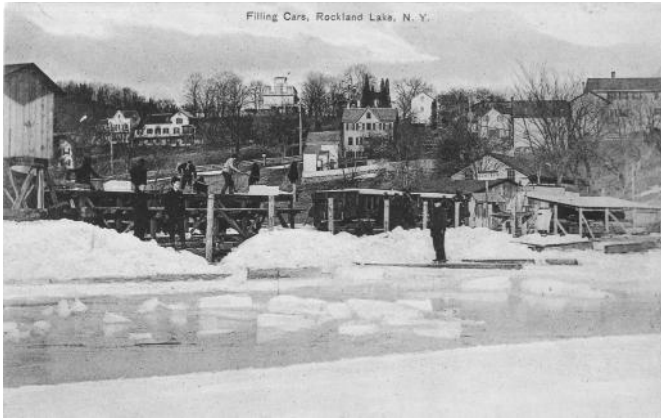


The Historical Society of Rockland County Invites You to Join Us for

# Rockland Lake's Icy Past and Future

*With Timothy Englert*



**Sunday, January 11, 2026**

The presentation will start promptly at  
1 pm in the lower-level Community  
Room

Price: \$5 (*space is limited, and  
reservations are required*)

[www.rocklandhistory.org/lecture--  
rockland-lake-s-icy-past-and-future](http://www.rocklandhistory.org/lecture--rockland-lake-s-icy-past-and-future)



Timothy Englert, founder of Rockland County's Knickerbocker Ice Festival, will share stories about Rockland Lakes illustrious past as the ice box of New York City and how it became world famous a century before it became a state park.

With the festival returning in 2026 on the weekend of January 24-25, he will share how he and the late Robert Patalano created the ice festival that thrilled thousands from 2007 to 2013 with huge ice sculptures along the banks of the Rockland Lake.

*About the presenter:* Timothy Englert is the creator of the Knickerbocker Ice Festival at Rockland Lake, as well as The Knickerbocker Bench, a modern interpretation of the venerable log bench, which can be found along trails and in parks throughout the Hudson Valley and beyond. He was a development executive for the Palisades Interstate Park Commission (PIPC) and a documentary filmmaker with a career spanning two decades. His favorite films are the many shorts he made about the PIPC's illustrious history.

**FOR RESERVATIONS, COMPLETE THIS FORM AND RETURN IT, WITH PAYMENT,  
BY JANUARY 8, 2026**

## Rockland Lake's Icy Past and Future ♦ Sunday, January 11, 2027

*Cancellation policy: Refunds will be given only if we are able to fill your seat prior to the lecture. A waiting list will be compiled, and available spaces will be filled on a first come, first served basis. Only those who have made full payment can be accommodated.*

**Reservation Fee:** \_\_\_\_\_ Seats at \$5.00 per person = \$\_\_\_\_\_

Name(s): \_\_\_\_\_

Address: \_\_\_\_\_ City: \_\_\_\_\_ State: \_\_\_\_\_ Zip: \_\_\_\_\_

Telephone: \_\_\_\_\_ E-mail: \_\_\_\_\_

Emergency Contact: \_\_\_\_\_ Emergency Contact Telephone: \_\_\_\_\_

### Payment:

☐ I have enclosed a check for \$\_\_\_\_\_ payable to *The Historical Society of Rockland County*

☐ Please charge my credit card \$\_\_\_\_\_ Card Number: \_\_\_\_\_ Exp. (mo/yr) \_\_\_\_ / \_\_\_\_ CCV \_\_\_\_\_

### Return form, with payment, to:

The Historical Society of Rockland County, 20 Zukor Road, New City, NY 10956

**Questions? Phone: (845) 634-9629**

**Fax: (845) 634-8690**