

OTOLIFT  
STAIRLIFTS

dolphin  
MOBILITY

[www.dmyc.co.uk](http://www.dmyc.co.uk) Freephone 08000 282082

# Content

---

Revolutionary stairlift	4
The revolution among stairlifts	6
Installed sooner	8
New elegance	10
Unique rail system	12
Reverse Drive Technology	14
Flexible convenience	16
Intuitive and easy to use	18
The 8 benefits	22
Choose your upholstery and paint colour	24







# Otolift Modul-Air Smart **Revolutionary Stairlift**

---

Discover Otolift's most advanced stairlift: the Modul-Air Smart. Equipped with state-of-the-art technologies, making it safe and effortless to operate. Expect great comfort thanks to the ergonomic design and high-quality upholstery.

Do you consider design important? The finish is sublime. In folded position, the Modul-Air Smart is a discrete sight. The smart chair moves quietly on an ultra-thin rail, composed of innovative modules that fit together perfectly. Otolift's Modul-Air Smart is the perfect solution for every staircase.





# Otolift Modul-Air Smart

## **The revolution among stairlifts**

---

Thanks to the new modular technology, it is possible to keep all parts of the rail in stock at our factory, potentially leading to faster delivery.







# Otolift Modul-Air Smart **Installed sooner**

---

The Otolift Modul-Air Smart, the stairlift with the world's thinnest single rail. The majority of configurations can now be delivered from stock. This means the stairlift can be installed sooner than a custom built rail. Our newest stairlift is built from several pieces and by the unique couplings this is not at the expense of ride quality.

We have many different rail parts so that we can fit the stairlift on most staircases, without taking up too much space.







# Otolift Modul-Air Smart

## New elegance

---

The Otolift Modul-Air Smart sets the new standard. Comfort, design, safety and technology come together in one stairlift.

Compact size and soft lines characterise the design of this unobtrusive stairlift. The footrest folds up to form a single unit with the seat. The seat has an ergonomic design and high-quality upholstery for ultimate comfort. The controls are discreetly integrated into the slightly curved armrests. A light touch moves the chair quietly over the world's thinnest single rail. Experience exclusive elegance, outstanding comfort and optimum safety.







# Otolift Modul-Air Smart

## Unique rail system

---

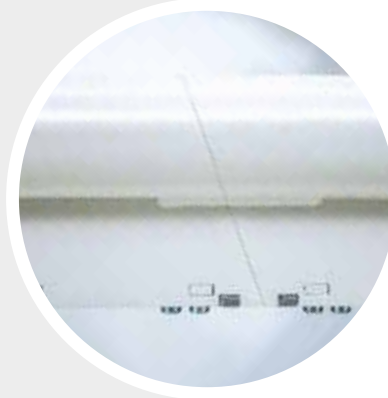
The rail of the Otolift Modul-Air Smart is unique in several aspects. It is a series of innovative modules that together form a perfect whole.

Our engineers have designed the modules in such a way that they are interchangeable. This way, we can adjust the rail effortlessly and quickly for almost any staircase. Even if you prefer the stairlift on the inside. We make your stairlift exactly the way you want it.



### World's thinnest single rail

With a diameter of only 6 centimetres the rail of the Modul-Air Smart is the thinnest single rail in the world. Truly an unobtrusive presence in your interior.



### Unique angled coupling

The oblique coupling between the modules ensures for optimum ride quality. The chair moves up and down in one smooth motion.



### Tested with 800 kg

The modular rail is so strong that during testing we were able to strain it with a load of no less than 800 kg. Otolift quality is what we call that.



**Otolift Modul-Air Smart**

ø 6 cm  
In full scale



**Traditional stairlift**

ø 8 cm  
In full scale

# Otolift Modul-Air Smart **Reverse Drive Technology**

---

Thanks to this smart technology, the chair can partially or even completely drive in reverse. This prevents you, for example, from hitting the wall or bannister with your knees.







# Otolift Modul-Air Smart

## Flexible convenience

---

The Otolift Modul-Air Smart is ideal for installation along the wide or narrow side of your stairs. The thin rail of the Otolift Modul-Air Smart also blends in, this means that virtually nothing changes to your stairs.

Wide, narrow or spiral staircases, the Otolift Modul-Air Smart easily adapts to the most demanding stairs and unobtrusively follows all curves. In addition, the rail takes up so little space that the stairs also can easily be used on foot. In this way, it is ensured that not only you, but also your family members or guests can always use the stairs safely.



### Automatic folding footrest

Standard equipped with an automatic folding footrest. This means you don't have to bend down to fold the footrest up and down



### Auto-swivel seat option

The lift can be equipped with an automatic rotating seat, for a smooth ride and so that you can get on and off safely.



### Smart dashboard

The smart dashboard in the armrest is a unique feature. It offers you a live view with the status of your stairlift. Simply check the battery level at a glance.





# Otolift Modul-Air Smart

## **Intuitive and easy to use**

The Otolift Modul-Air Smart is very easy to use. After installation, you will receive a calm, clear and detailed explanation from the installer.



### **Step 1**

You bring the chair to you with the wireless remote control.



### **Step 2**

You sit down on the comfortable seat.

[www.dmyc.co.uk](http://www.dmyc.co.uk) Freephone 08000 282082



### **Step 3**

The chair moves quietly and smoothly.



### **Step 4**

The chair continues its way up quietly and stops automatically.



### **Step 5**

The chair turns to the landing. Now you can take off your seat belt.



### **Step 6**

You safely step off your stairlift.

# Otolift Modul-Air Smart

## **Intuitive and easy to use**

---



### **Smart battery system**

Thanks to the smart battery system, the stairlift can also be used in the event of a power failure.



### **Space-saving**

The Otolift can be folded quickly. It saves space and the stairs remain easily accessible.



### **Simple**

The new seat belt is easy to use and can be closed with one hand.





### **Safe**

Your Otolift stops when it detects an obstacle. Automatic, gentle and safe.



### **Short Start**

With a short start, the passage or door at the bottom of your stairs remains completely free.



### **First Riser Start**

The First Riser Start hangs on the first step. As a result, the rail takes up even less space.

# Otolift Modul-Air Smart

## **The 8 benefits**

---

- 1 Your bannister can stay
- 2 Custom made through innovative modules
- 3 The world's thinnest single rail
- 4 Smart dashboard
- 5 Ergonomic seat
- 6 Auto-swivel seat option
- 7 Automatic folding footrest
- 8 Mounted on your steps





8

1

2

3

4

5

6

7



# Otolift Modul-Air Smart

## Choose your upholstery colour

---

The seat of the Otolift Modul-Air Smart is available in different colours and materials. For example, with fabric upholstery you can choose from the colours grey, beige and red.

If you prefer synthetic leather upholstery, you can select between the colours blue, ocher yellow, burgundy red, cream white, brown and black. If you opt for leather upholstery, you can choose from the colours taupe, maroon, grey and hazelnut.

### Paintwork



Cream white  
RAL 9001





## Seat and backrest upholstery

### Synthetic leather



Night Blue



Ocher yellow



Burgundy red



Cream white



Brown



Black

### Leather



Grey



Taupe



Maroon



Hazelnut

### Fabric



Grey



Beige



Red





**Otolift, a reliable  
family business  
since 1891**

