

**CYNGOR CYMUNED LLANILLTUD FAERDREF
LLANTWIT FARDRE COMMUNITY COUNCIL**



ADDRODDIAD BLYNYDDOL/ANNUAL REPORT 2024/25

**In accordance with Section 52, Part 3 of the Local
Government and Elections (Wales) Act, 2021**

DRAFT

CONTENTS

FOREWARD FROM THE CHAIR	5-6
ABOUT LLANTWIT FARDRE COMMUNITY COUNCIL	7
MEMBERS OF LLANTWIT FARDRE COMMUNITY COUNCIL	8
THE FUNCTION OF THE COMMUNITY COUNCIL	9
COUNCIL MEETINGS	10
1. HOW WE ARE FUNDED	11
2. THE BUDGET FOR 2022/23 FINANCIAL YEAR WAS SET AS	12 -13
3. STAFFING	13
4. GRANTS	14
5. BUILDINGS	15 - 16
6. ACTIVITIES/ACHIEVEMENTS	17 - 24
Duties towards Wellbeing Goals	25
Objective 1	26 - 30
Objective 2	31-34
Looking Forward – Plan For 2025 – 2026	34
Conclusion	35

DRAFT

FOREWARD FROM THE CHAIR



***Jeffrey Beattie
Chair of Llantwit Fardre Community Council 2024/25***

Good wishes to you all and I hope this year's report finds you well.

It has been a great privilege to serve the communities of Church Village, Efail Isaf, Llantwit Fardre and Tonteg as Chair of the Llantwit Fardre Community Council over the past year.

Being proud of your community and surroundings is fundamental to our success as a Community Council. It has been an honour to work with all Councillors, staff and others and as Chair I thank them all for their contributions

Our Council has worked as a team and has done so for the good of our community. As a Council this year's aim was to encourage and develop a strong community engagement and I am pleased to say that this has got stronger as the year progressed examples of this can be seen throughout the report.

As Chair I had the opportunity to attend various events from attending local schools to tree plant all of which filled me pride and positivity for the future.

Remembrance Sunday brought young and old together to remember those that have fallen in conflict. The Carnegie Parish Hall garden was decorated with poppies made by the Rainbows, Brownies, Guides and Ranger from all four wards off the Community Council. The Women's Institute had made wreaths and the contribution from all that attended the service will be a highlight of my year as Chair.

We have continued to show pride in our areas with our staff going over and above to keep our local areas clean and presentable for not only all who live within the area but for those that visit also. The staff thrive to provide a better environment for all and has started a new tree planting programme to replace the trees that had to be removed due to disease. I would like to thank Rhondda Cynon Taf County Borough Council for the donation of some of the new trees and look forward to working with them in the future in making our community a greener environment to live in.

May I also take this opportunity to thank my fellow Councillors for their work throughout the year in making this Council one that has a bright future remembering "Goreu arf arf ddysg" The best tools are the tools for learning".

Jeffery Beattie
**Chair of Llantwit Fardre Community Council
(2024/25)**

ABOUT LLANTWIT FARDRE COMMUNITY COUNCIL



Llantwit Fardre Community Council consists of four wards, Church Village, Efail Isaf, Llantwit Fardre and Tonteg. We are situated at the lower end of the valleys with close links and access to Cardiff and Swansea via the A470 and the M4.

The Community Council has 13 sitting Councillors who were elected in May 2022. The Council proactively works with the communities it serves and aims to do the best it can for residents and visitors alike.

The Community Council has adopted the motto which is carved over the entrance to the Carnegie Parish “**Goreu arf arf ddysg**” being translated from the old Welsh word to mean “The **best tools are the tools of learning**”, this is something that can be found throughout the report and the Council will endure to strive for. The Community Council will continue learn and work with residents, businesses and other organisations to improve services and help the community prosper for generations to come.

MEMBERS OF LLANTWIT FARDRE COMMUNITY COUNCIL

Councillor Jeffery Beattie – Tonteg Ward

Councillor Raymond Butler – Tonteg Ward

Councillor Patricia Fletcher – Llantwit Fardre Ward

Councillor Aubrey Green – Church Village Ward

Councillor Brian James – Llantwit Fardre Ward

Councillor Joel James - Efail Isaf Ward

Councillor Karl Johnson – Llantwit Fardre Ward

Councillor Joseph Murphy – Tonteg Ward

Councillor Anthony Raines – Church Village Ward

Councillor G Stacey – Church Village Ward

Councillor David Stone - Church Village Ward

Councillor Samuel Trask – Llantwit Fardre Ward

Councillor Gaynor Warren – Church Village Ward



The Functions of the Community Council

The Community Council fulfils its statutory duties and uses its powers to provide a wide range of services to meet local needs and improve the life of residents in the community areas of Church Village, Efail Isaf, Llantwit Fardre and Tonteg. Llantwit Fardre Community Council in summary:

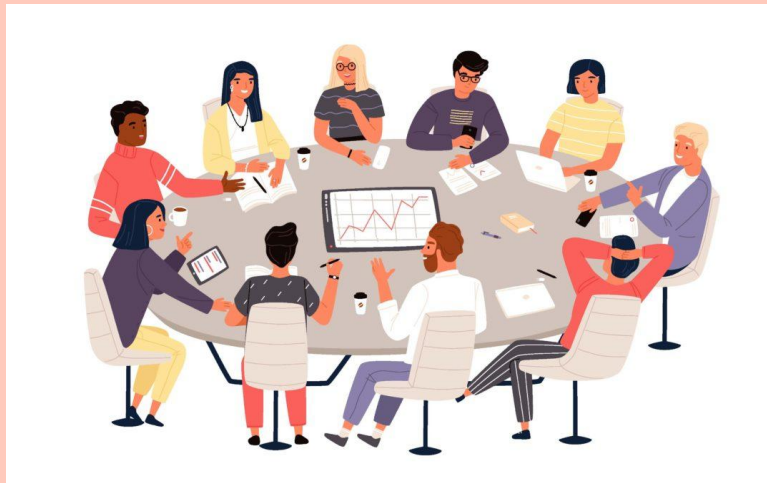
- Owns and manages the Carnegie Parish Hall, Ty Illtud Community Centre, the office building behind the Carnegie Parish Hall,
- Own two allotment sites with a total of
- Maintain 10 community play areas
- Own and maintain large areas of amenity land with our outside maintenance team ensuring the grass cutting, tree maintenance and hedge maintenance are kept to a high standard.
- Provide and maintain bus shelters
- Provide and maintain Wayside seats
- Provide and maintain 3 Community car parks
- The custodian of a War Memorial which can be found in the Carnegie Parish Hall
- Own and maintain 16 planters throughout the council area
- Provide notice boards across all four wards as a platform to highlight activities that are taking place within the community.
- Has an active Community Grant Scheme, which provides financial support to voluntary and charity group in the area.
- Own and maintain 8 defibrillators located throughout our community.
- Provides various activity programme, classes and events with our buildings.
- Co-ordinates various events such as Remembrance Sunday Service, Free Christmas Funday, Senior Citizens Christmas dinner and other events throughout the year.
- Provides a collection point for recycling bags and food waste bags,
- Owns and maintains Ty Y Craig a mountain area which has a variety of wildlife and much more.
- Represents the voices of the community on partnership or external bodies such as Rhondda Cynon Taf Community Liaison Committee, school governing bodies.

➤ COUNCIL MEETINGS

Llantwit Fardre Community Council Meetings are ordinary held on the last Monday of each month apart from August when the Council is in recess. The meetings are held by hybrid means which is in line with the Local Government (Wales) Act 2021. This allows Members and public to attend in person or remotely.

The meetings take place at the Council Chamber of the Carnegie Parish Hall, Main Rd Church Village where there is space available for public to attend or remotely by means of the Zoom application which can be found on many devices.

The Zoom link can be found on the Meeting Agendas which are published on the Council's website and placed in the noticeboards across the four wards of the Community Council.



Committees

Apart from monthly Full Council meetings, Members of the Council meet to discuss specific topics under the following committees: -

Finance and Policy Committee - considers all financial transactions are taken within the Council's Financial Regulations such as reviewing the charges for hall hire, preparing an annual draft budget and consideration of the precept in line with the priorities of the Council. To keep under review the financial policies of the Council.

Leisure & Amenities Committee – To recommend to the Council a planned programme of maintenance repairs and upgrade, to review the Council's health and safety policy along with many other.

Staffing Committee – All aspects of staffing and employment issues

The terms of reference for each committee can be found as part of the Council's Standing Orders.

1. HOW WE ARE FUNDED

Precept £349,904

£52.78
Band D Tax Levied

The main source of funding for Community and Town Councils is the funds raised through the precept (a charge to Council Tax) which is in accordance with Section 41 of the Local Government Finance Act, 1992 (2 the Act")

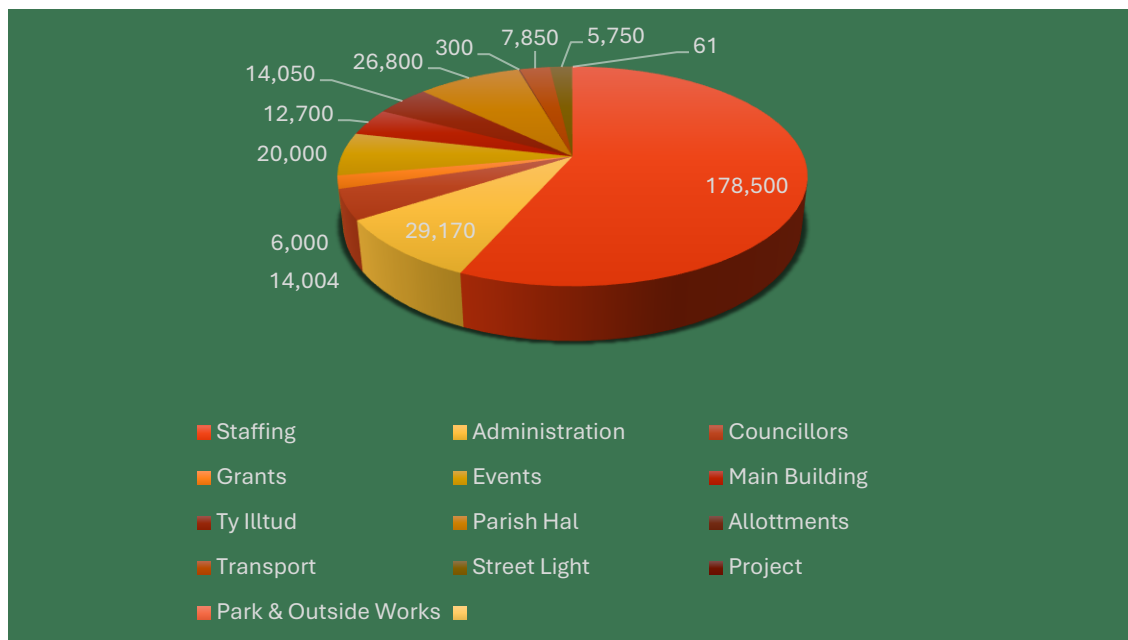
As like all other Town and Community Council's this Council must calculate its budget for a financial year in accordance with Section 50 of the Act and issue a precept to the billing authority i.e., Rhondda, Cynon Taf County Borough Council.

Llantwit Fardre Community Council's precept for 2024/25 was £349,904. as it was agreed at the Finance and Policy Committee held on 18th December 2023 that a recommendation be made to full Council that the Council D tax band per household be increased to £52.78 for the year to deal with cost-of-living crisis, increase fuel prices and utility fees which has carried on from last year's worldly events. This recommendation was approved by full Council at its meeting held on 29th January 2024.

The remaining income generated by the Community Council comes for the Carnegie Parish Hall and Ty Illtud Community Building Hall hire, allotment rent, Lightsource, Wayleave also income from the lease of the old Council Office Building to the rear of the Parish Hall.



2. THE BUDGET FOR THE 2024/25 FINANCIAL YEAR WAS SET AS: -



The above percentages equate to: -

Staffing	£178,500
Administration	£29,170
Councillors	£14,004
Grants	£6,000
Events	£20,000
Main Building	£12,700
Ty Illtud	£14,050
Parish Hall	£26,800
Allotments	£300.00
Transport	£7,850
Streetlighting	£5,750
Park & Outside Works	£55,250

The Community Council holds ring fenced funds for specific future projects known as Earmarked Reserves and these are reviewed regularly to ensure adequate provisions

are in place. The total earmark reserves for 2024/25 were £139,249. Which does not include the CIL (Community Infrastructure Levy). CIL receipts from previous years and 2024/25 total £67,114,67

A full breakdown of expenditure for 2024/25 is available in the Annual Accounts.

3. STAFFING

The staffing structure for 2024/25 consists of a team of five which can be seen below

Clerk & Executive Officer& Responsible Finance Officer.	28 hours per week
General Service Manger	Full time
Manual Operative (Supervisor)	Full time
Manual Operative	Full time
Caretaker / Cleaner	26 hours per week

The Community Council staff are based at the Community Council Offices, **Ty Illtud Community Building, St Illtyd's Rd, Church Village CF38 1DB**. Our office opening times are 9:00am.to 4:30pm (Minday to Thursday) and 9:00am to 13:30pm (Friday)



4. GRANTS

As in previous years the Community Council provide groups and organisations that operate with the Council's area an opportunity to apply for a grant which could be found on the web site [Llantwit Fardre Community Council](#) and at the Community Council Office . This year Council received many applications which were considered in the full Council Meeting held on 8th January 2025.

The objective in awarding grants is to encourage the participation of residents within the community and it is pleasing to see that this year has been no exception with over 30 + applicants.

Members awarded a total of £4,596 to various organisations and groups who provide activities within the community, improving the local economy, environment, and the wellbeing of both young and old.



5. BUILDINGS

We have had great pleasure in seeing our beautiful buildings being used once again by residents within the community for various reasons. Some of which will be explained later in the report.



THE CARNEGIE PARISH HALL MAIN ROOM



Llantwit Fardre Community Council owns and runs two building, firstly the Carnegie Parish Hall which was built in 1906 and is a listed building which can hold up to 120 seated. The hall consists of a main hall, kitchen, meeting room and has both disabled toilets and disable access. This Venue is a creative hub for the community

The hall is used for many different activities throughout the year from Rainbows, Brownies, Guides to WI Groups, Yoga, Tia Chi along with educational groups. A list of groups users can be found on our [website](#) and by calling the Community Council Offices

TY ILLTUD COMMUNITY CENTRE

Secondly Ty Illtud Community Building has of January 2024 has been split in to two areas the back two rooms have become the Community Council Office and is open Monday to Thursday 9.00am to 4,30pm and Friday 9.00am to 1.30pm.

Public can call in during this time for recycling bags, dog bags . The staff are available to answer any queries during this time. Public may also get in touch via email

admin@llantwitfardre.cc , telephone 01443 209779 or in writing to the

Clerk to Llantwit Fardre Community Council,

Ty Illtud Community Building,

St Illtud's Road

Church Village,



The main hall and kitchen of Ty Illtud Community Building is available to rent and we have many users who find the hall and its kitchen facilities a fantastic place to meet like-minded people, such as the Quilting group, Cancer Research Coffee morning, dance groups again these details can be found on our website

llantwitfardrecommunitycouncil.org

OFFICES TO THE REAR OF THE PARISH HALL

The building that was the Community Council Office has now been leased by a charitable organisation. This will bring steady income for the Community Council and in turn give the lease holder a secure base for the next few years to carry out its support of residents across Rhondda Cynon Taf.

6. ACTIVITIES/ACHIEVEMENTS

During the 2024/25 Municipal Year Members of the Leisure and Amenities Committee set out its initiatives for the year some of which are under the following headings:

- Play Areas,
- Planters
- Tree Planting,
- Carbon Footprint/ Climate Change,
- Community Activities / Events / Engagement



The Community Council's play areas offer an inclusive and diverse range of play, catering for all needs. Our parks are vitally important to us and serve a vital role to the young people of our community. Some of the benefits include

- Encouraging Physical Activity
- Boosts social skills
- Encourages physical development
- Improves cognitive development
- Stimulates creativity and imagination
- Increases confidence and self-esteem
- Learning through play

Play area locations

Tonteg play area - CF38 1SA

Ysgol Ty Coch play area - CF38 1NF

The Ridings play area - CF38 1NR

The Dell Play area - CF38 1TG

Station Road play area – CF38 1AH

Heol Y Parc play area - CF38 1AN

Maes Y Bryn play area - CF38 2LZ

Woodlands Upper play area - CF38 2RG

Woodlands Lower play area - CF38 2RG

Ty Draw play area - CF38 1UB

The Chair of The Leisure and Amenities has worked tirelessly throughout the year in conjunction with staff and Members to ensure our amenity land, play areas and buildings are kept to a high standard for residents to use and enjoy safely.

PLANTERS

This year as a Council we have been able to replace five worn out planters across the four wards of the Community Council which are currently being planted with flowers from local suppliers and school garden schemes. We will carry this into the 2025- 26 Municipal year where we have budgeted for a further five planters which will bring more uniformity to each area.

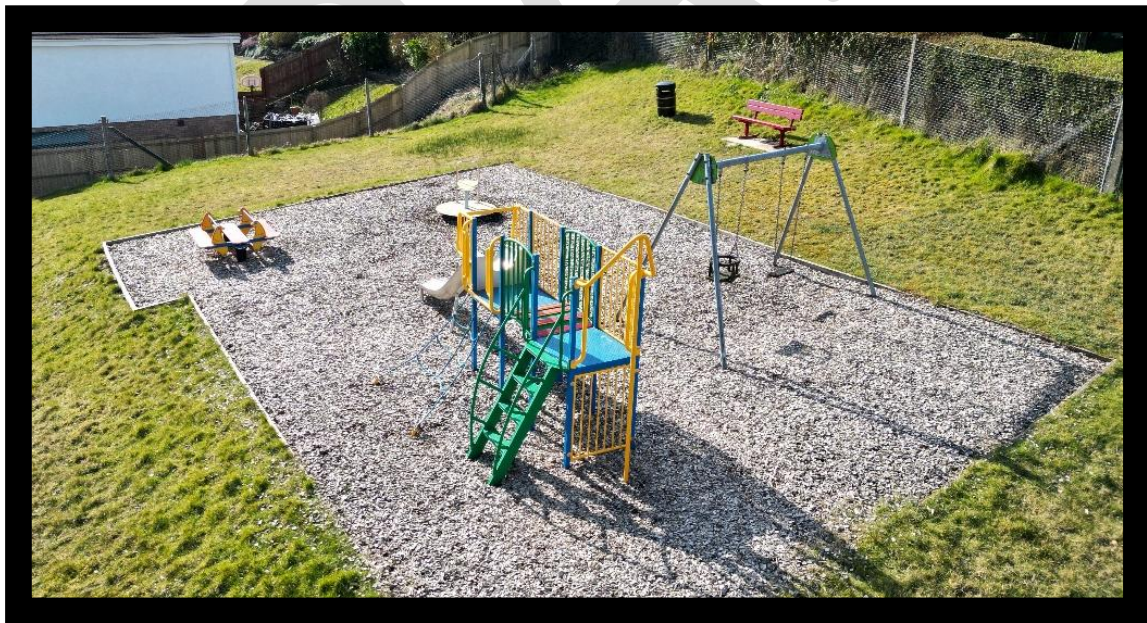


PLAY AREAS

At the meetings of Leisure and Amenities Committee Members have once again concentrated on improving play areas across the Community Council land for 2024 - 2025. The Community Council have concentrated on ensuring that play area surfacing is kept to a high standard this can be seen with the renewal of surface area in Tonteg park which the Council agreed at its meeting in September 2024 to replace the existing tarmac before it became unsafe thus providing a safe haven for children and young people to play and learn.

We as a Council are proud to work with residents in the community and the path in the village hall play area Efail Isaf is an example of working with people to meet their needs. The pathway throughout the park has been extended to enable both wheelchairs and prams to have easy access to all pieces of play equipment making it inclusive for all.

All bark used within our play areas have been renewed and the outside staff have worked hard to ensure safety is a priority with the hydraulic gate at the Ridings play area being replaced to ensure public access and safety is prioritized. This is shown in our Independent Park inspection where we have had no issues report deemed higher than low risk. We will continue to ensure our play facilities are kept to a high standard for years to come for young and old to enjoy. We will soon be renewing the pathway around Ysgol Ty Coch play area which is one of the first priorities for 2025-26.



TREE PLANTING / CARBON FOOTPRINT

The Llantwit Fardre Community Council has a yearly tree inspection across all its amenity land. This is carried out by an external arborist and this year's inspection highlighted a vast amount of ash dieback. At the meeting of the Council held in November Members agreed that these trees should be removed for public safety and to help stop the spread of disease.

Members also agreed at the meeting that the Community Council purchase trees to replace those that had been removed. The Community Council also worked with the Unitary Authority on a replanting scheme and received 18 trees of native decent to the UK. From Rhondda Cynon Taf County Borough Council, these have been planted across the community and in time these trees will help in creating a greater tree canopy offering numerous benefits such as improving air quality, temperature regulation and biodiversity while also providing aesthetic and mental health benefits.

Using the logs that were removed the staff created habitat piles in certain areas once again play a part in the local biodiversity plan.



COMMUNITY ACTIVITIES / ENGAGEMENT / EVENTS

Going into 2024- 25 Llantwit Fardre Community Council's aim was to engage with more community groups, businesses and schools across the four Ward of Church Village, Efail Isaf, Llantwit Fardre and Tonteg.

Members considered a plan of events for the year, and it is pleasing to announce that the Community Council has engaged with schools across the area, firstly a competition was devised for the creation of a poster and ticket for our Senior Citizens Christmas Event (which can be found further along in the report.) All schools across the Community Council catchment area were asked to participate. It was a pleasure to see so many entries and lovely pictures which brought smiles to both Members and older generation. The winner was a pupil from Gwauncelyn Primary School and the Chair of the Council had the honour of presenting an award at the school, this can be seen in the picture below.



The Community cohesion is an aim of the Community Council, and we have worked tirelessly to improve community spirit by putting on various events for all ages.

REMEMBRANCE SERVICE 2024

On Sunday 10th November 2024 the Community Council arrange the Annual Remembrance Sunday Service at the Carnegie Parish Hall in front of the War Memorial which was given to the Llantwit Fardre Community Council on the 20th of October 1956 by the War Memorial Committee.

It was pleasing to see the preparation for this year's event was carried out by the Community Council in conjunction with the Rainbow, Brownies, Guides and Ranger from all four wards along with groups from the local Women's Institutes. The Group made poppy displays for both the hall and gardens, where residents could view at their leisure. We also engaged with the local bakery who provide a buffet for all that attended.

Reverend Kevin Simpson conducted a Remembrance Service at the Carnegie Parish Hall, this event was arranged specially for the older and younger generation to get together and learn about the importance of Remembrance.



CHRISTMAS 2024

For many years Llantwit Fardre Community Council has organised a Senior Citizens Christmas Dinner and this year was no exception with tickets being sold out within record time. The event ran over two consecutive evenings which brought a 110 people together each night.

The night was filled with food, fun and entertainment bringing old and new friends from across all four wards with to celebrate the festive season. We are looking forward to celebrating next year and continue to promote togetherness and help battle loneliness.

Christmas Fun Day

It was with great sadness that our free Christmas Fun Day had to be cancelled at the very last minute due to Storm Darragh which was a category Amber / Red Storm, and we can reassure residents that every effort is being made to hold a bigger and better fun day for Christmas 2025.



Christmas Lights Competition – Our annual Christmas Light Competition took place again in December 2024 with many more residents participating. The Chair of the Council went out on an evening to judge the decorated houses resulting in two runners up each receiving £50. and the overall winner from the Church Village area receiving £100. It was a pleasure visiting streets across the community light up with Christmas cheer.

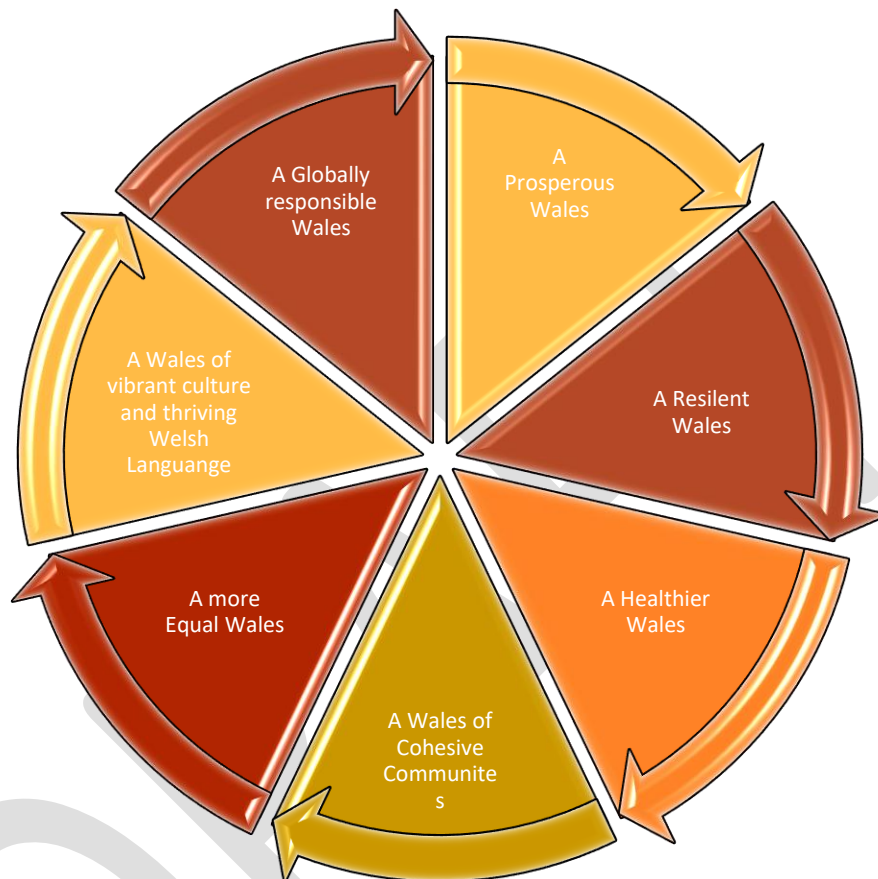


Christmas Pantomime 2025

The Community Council had the privilege of holding Jack and the Beanstalk Christmas pantomime in the Carnegie Parish Hall where lots of fun and laughter had by young and old. Community Councillor took part in handing out sweets and treats the event and joined the “he’s behind you” chant by all that attended.



LLANTWIT FARDRE COMMUNITY COUNCIL'S DUTIES TOWARDS WELL-BEING



The Well-being of Future Generations Act 2015 places a duty on Llantwit Fardre Community Council to take steps towards meeting the well-being objectives with the local wellbeing plan published by Cwm Taf Morgannwg Public Service Board. It has prepared and published a Well-being Plan for 2023-2028 which sets out objectives to achieve the well-being goals.

During 2024-25 Llantwit Fardre undertook the following work towards meeting the two objectives set out in well-being plan.

Objective 1 – Healthy Local Neighbourhoods



Llantwit Fardre Community Council aims to make our communities of Church Village, Llantwit Fadre, Efail Isaf and Tonteg a safe and cohesive place to live where resident and visitor feel valued and supported and connected.

The Community Council has continued to support our community and help to make residents feel connected with new and like-minded people. We aim to provide opportunities to keep fit and healthy in our community all under the umbrella of feeling and being safe.



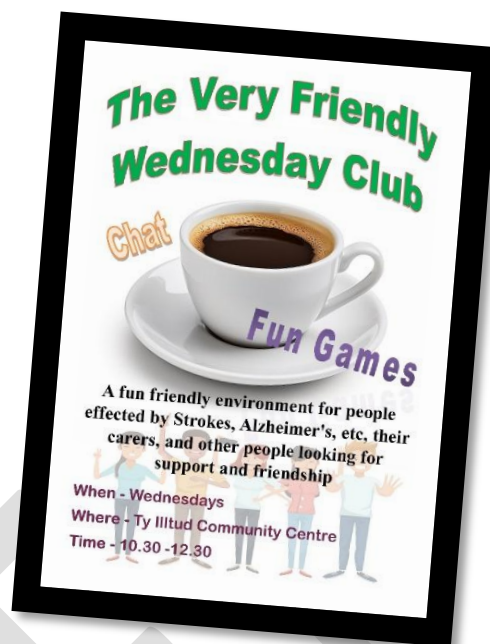
Our two Community Council owned buildings, both of which are in the heart of Church Village are easily accessible and have plenty of free car parking spaces and good transport links to the surrounding areas. The buildings are used by many different community and private groups from around the four wards connecting residents of all age groups. These groups provide great local activities and opportunities for all members of society.

The Community Council has recently linked with the Urban Market and has developed a community Market in the Carnegie Parish Hall and its car park whereby residents can visit and enjoy local goods made by local suppliers.

The Council has linked with schools, community groups and charities involving them in events such as providing a link with local food banks, parent groups, school participation which gives the opportunity for all the community to come together.

As a Community Council we have regular updates from South Wales Police and the local authority on the tackling crime and disorder within our community and we will continue to work with partners to develop more effective programmes to keep our residents safe.





Allotments

Llantwit Fardre Community Council owns two allotment sites – one situated at Lansdale Drive, Tonteg and the other at Station Road, Church Village.

The allotments are a place for people of all ages to come together in the fresh air and grow their own produce. This is not only good for a person's physical health but their mental health and wellbeing too.

With this in mind, once again the Council has not increased its rent, and hopes to work more closely with the allotment organisation next year to improve and promote what it stands for along with introducing the allotment competition and a best garden competition thus creating a healthy local neighbourhood.



DRAFT

OBJECTIVE 2. A SUSTAINABLE AND RESILIENT LOCAL NEIGHBOURHOOD



With fast changing world and the risk of climate change begin at the forefront of everyone's everyday life, Llantwit Fardre Community Council aim to do as much as possible to protect our green spaces across Church Village, Efail Isaf, Llantwit Fardre and Tonteg.

Llantwit Fardre Community Council recognise that well managed green spaces provide a better quality of life for residents and visitors. It provides 10 play areas across. The Community Council takes pride in maintaining its play areas which provides dedicated spaces for children, parents, grandparents to gather and socialise outside.

The Community Council owns two allotment sites Tonteg Allotments and Station Rd and Dyffryn Bach Allotments which provides space for residents to grow their own fruit and vegetables along with helping create a more biodiverse community. We hope to introduce an allotment competition in 2025-26 for our allotment users to get together and show their wares.

The passionate team of outside staff work tirelessly to enhance our public spaces by carrying out tree and bulb planting throughout the wards along with maintaining picnic benches, wayside seating and bins for the benefit of residents.

As you can see from the picture above the bluebell at Tir -Y-Graig are once again flourish this year this is thanks to all the hard work that has been done by the Council staff to ensure the yearly regrowth of these beautiful, protected flower which give our wildlife the chance to pollenate for years to come.



The Community Council is committed to being environmentally aware and has again actively support supported programmes that reduce the Council's impact on the environment and will aim to continue to improve its performance as covered within our biodiversity plan. The following has been achieved again this year with: -

- No Mow May,
- Recycling of resources,
- Use of sustainable products where possible
- Habitat piles across our land
- Waste minimisation.
- Tree replanting scheme.

The Council has had the pleasure of working with pupils of Ysgol Ty Coch. Pupils along with Chair of Leisure and Amenities Committee planted wildflower seeds in the field alongside Ysgol Ty Coch another step in the right direction to protect our green spaces and wildlife.





Cllr Jeff Beattie (Chair) and Rachel Carter the Local Places for Nature Officer from One Voice Wales carrying out a survey of Tir Y Graig to assess the areas biodiversity, this was very pleasing and has given the Community Council a better understanding of what wildlife and wildflower flora is in our community. We hope to work with community groups going forward to carry on enhancing where we live.

The Community Council has worked alongside the Unitary Authority to improve the local pedestrian facilities and safe routes to school in Church Village. The car park at St Illtyd's Road has had work carried out to provide Electric Vehicle charging points and hopes to develop this further



PLANS FOR 2025- 2026

The Community Council will continue to work with the community on developing a more inclusive environment to live in and the following works have been identified for 2025/26: -

- Completing works to the Carnegie Parish Hall toilets, along with investigating the state of the Parish Hall roof under listed building guidelines.
- Work to be carried out on the Ty Illtud Community Building entrance way to enable the public to access the Council office without having to go through the hall when it's in use
- Renew the pathway around Ysgol Ty Coch play area
- Install six new planters to replace the ones that have deteriorated with floral displays.
- Organising the Remembrance Sunday Service to include Children and young people along with the older generation.
- Update play areas that are next inline on the 5-year plan.
- Arranging a St David's Day Event
- Organising the Christmas Events for all to enjoy
- Engage with Local Schools and Community Groups to make Llantwit Fardre Community Council area the best place to live and visit.

CONCLUSION

Illustrated throughout this Report is evidence to show how this Community Council has worked towards achieving its objectives within the following seven Well-being Goals as documented within the report.

- A prosperous Wales
- A Resilient Wales
- A Healthier Wales
- A More equal Wales
- A Wales of Cohesive Communities
- A Wales of Vibrant Culture and thriving Welsh Language
- A Globally Responsible Wales.

The Report has endeavoured to outline how Llantwit Fardre Community Council has in the last financial year taken reasonable steps in the work that it has undertaken to meet the objectives within the Local Well-Being plan published by Cwm Taf Public Service Board.