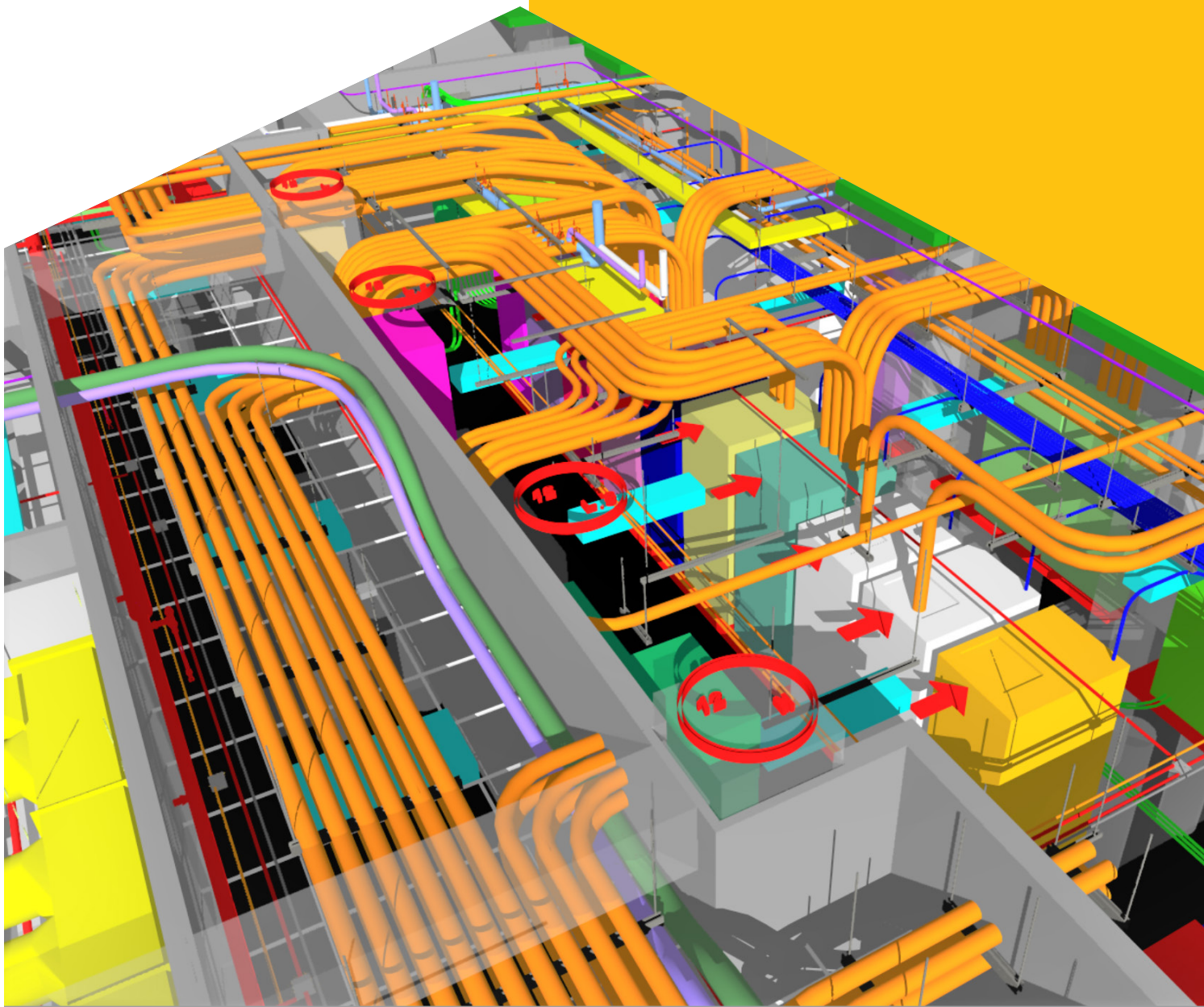




**E2 TECH**  
SUPPORT

# ELECTRICAL BIM COORDINATION & DESIGN

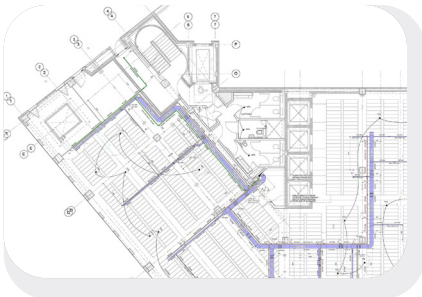
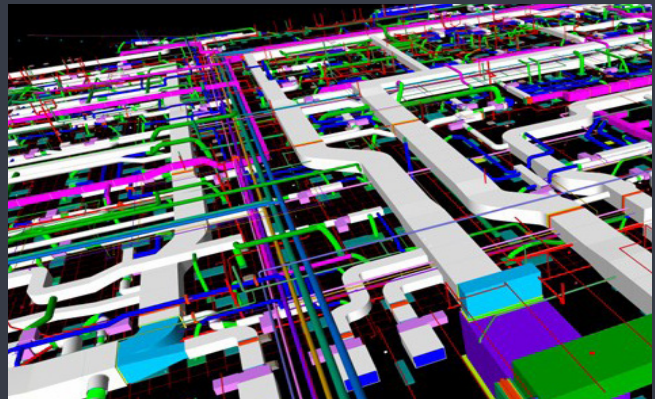


## Our Service

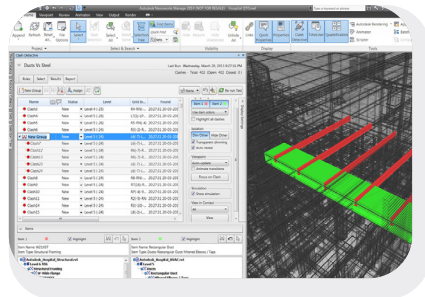
E2 Tech Support is dedicated to provide a niche service in the electrical industry specialized in Electrical Coordination & BIM Services. Our team with over 25 years of experience meet your BIM needs for electrical pre-construction and coordination.

Our Executive team has dedicated itself to work specifically with the electrical trade and is specialized in Virtual Construction.

- BIM Electrical Coordination
- BIM Electrical Training



### DRAFTING SERVICES



### COORDINATION BIM



### PRE-FAB / AS-BUILTS



## FULL ELECTRICAL BIM SERVICES

**OVER 15+ YEARS OF EXPERIENCE IN ELECTRICAL FIELD CONSTRUCTION**

Our Founder, Salomon Paredes has worked over 15+ Years of Experience in Electrical Commercial BIM Industry and decided to start training others and preparing them for the Electrical BIM Industry in 2017. Along with a team of BIM Designer, we now provide U.S.A. Based BIM Support for Electrical.

In this Industry, it's not just important to know how to run the program but how to build it!

**-Salomon Paredes, President of E2 Tech Support**







## Why Choose Us?

E2 Tech Support is an Electrical BIM specialized company providing BIM Services all around the U.S. Our BIM modeling and coordination services have experience in delivering projects across all types of industries/sectors such as Hotel, Multi-Residential, Education, Commercial, Hospitals, Medical Centers, Government, Retail, Manufacturing, and Warehouse/Storage.

We are unique. As one of client's mentioned to us:

We are a Unicorn in the Industry. Contact Us!



### 20+ Years of BIM Experience

We are not your typical drafting service. We have worked in the industry and know how to coordinate.



### Field Electrical Knowledge

Custom Trained Team in Electrical with Electrical Background and understanding of NEC Code.



### Proven Track Record

Tested by Nation-wide Electrical Firms and currently supporting them!

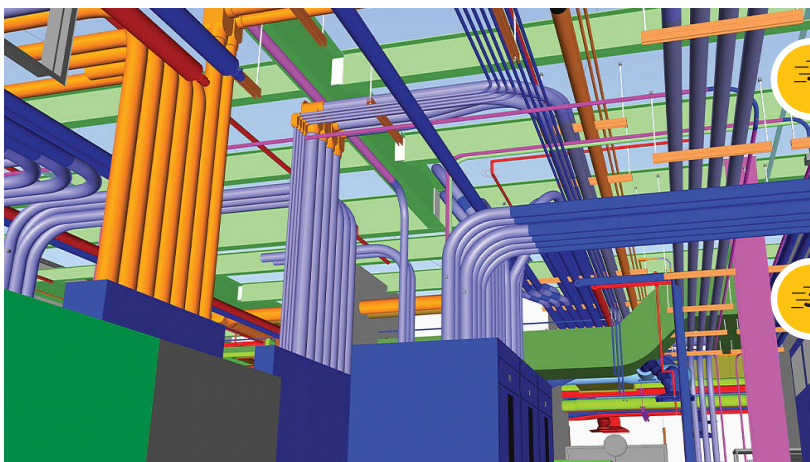


## Train with Us!



Are you looking for a place to send your employees for training! Contact Us as we can build a custom session with AutoDesk On-Site or at our offices to train and equip your employee!





**Quick and Effective!**



**Save Time!**

[www.e2techsupport.com](http://www.e2techsupport.com)

Phone : Office: 703-953-2729  
Direct Line: 571-449-8798

Email : [sparedes@e2techsupport.com](mailto:sparedes@e2techsupport.com)

Address : 761 Monroe Street Building B - Herndon, VA 20170