

# Process Solutions from Drum-Mates

## Heating Solutions

For Drums, Totes



Drum Base Heater



Immersion



Full Wrap



Full Wrap, Tote



IBC Base Heater

## Ask About Accessories



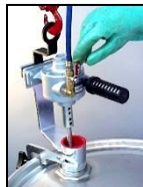
Drums



Totes (IBC's)

## Mixing Solutions

- Hand, Pneumatic, Electric, Drum & Tote Mixers, Drum Rotators & Rollers



Bung Entry



Open Drum Mixer



Top Mount Tote Mixer



Drum Rim Mount



Quik-Load Drum Rotator



Drum Mixing Roller

## Pumping Solutions

- Hand Pumps, Pneumatic Pumps, Electric, Double Diaphragm, Metering



Drum Pump Metering



Rotary, Hand



Reciprocating



Electric & Air Op.



Air Op. Economy Pump

## Pouring Solutions

- Hand Dispensing Nozzles, Spouts & Drum Drainers



316ss Drum Spouts



Stainless, TFE



SS, Aluminum, TFE



Polypropylene (PP)



PP & SS or Hastelloy



Drum Drainers

## Adapter Solutions

- Bung Hole Adapters, ThreadConverters, TubeGuards, SplashGuards



SplashGuard™



ThreadConverter™



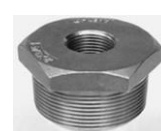
ThreadConverter™



ThreadGuard™



TubeGuard™



ThreadReducer™



Bung Assembly



HQ & NJ Sales Office  
Rahway, NJ  
800-864-2660

New England Reg Office  
Springfield, VT  
800-225-6711

Northern NJ Reg Office  
Fair Lawn, NJ  
800-622-1363

PA Regional Office  
Stroudsburg, PA  
855-207-0400

Jim Brinkerhoff, Product Manager  
732-574-1111, jbrinkerhoff@am-ind.com

[www.am-ind.com](http://www.am-ind.com)

# Drum & IBC Mixing Solutions for Factory, Shop & Field

## From Drum-Mates, Inc. • Process Equipment Division

### Benefits & Features

- High efficiency blending in pails, drums, totes and tanks
- Increase your product quality control for optimum uniformity
- Improve agitation performance with better impeller selection
- Find the best batch mixing time for thickness & material type

**DRUM-MATES®**  
Advanced Process Technology  
**Mix Most Solutions**  
**Mix Most Thicknesses**  
**Mix in Most Containers**

### Mixer Drives, Shafts and Impellers for Pails, Drums, Totes & Tanks

Inquire about Fixed & Folding impellers, Single or Multiple Tiers, for any Port Size



DM-55BAS Series  
Bung Mount Mixers



Hi-Shear



Hydrofoil



SS Prop



PVC Coated



Pure PTFE (Teflon)



Unfolding IBC Impeller

### Hand-held Pail, Drum & Tank Mixer Drives

For hand-controlled mixing and close examination of results

DM-45ADH Series, 3/4 Hp, 5-40 Cfm

DM-55ADH Series, 1.5 Hp, 10-70 Cfm

### Bung Mount Drum, IBC & Tank Mixer Drives

2" NPT bung mount, permits unattended mixing in drums & IBC tanks

DM-45BAS Series, 3/4 Hp, 5-40 Cfm

DM-55BAS Series, 1.5 Hp, 10-70 Cfm

### Rim Mount Pail, Drum and Tank Mixer Drives

Rim mount mixer for unattended mixing in open containers from 5 - 500 gal.

DM-45RAS-E Series, 3/4 Hp, 5-40 Cfm

DM-55RAS-E Series, 1.5 Hp, 10-70 Cfm

### Heavy Duty Rim Mount Drum & Tank Mixer Drives

Rim mount mixers: High or low viscosity mixing in open/closed drums/tanks

DM-45DGA Series, 3/4 Hp, Direct Drive, 5-40 Cfm

DM-55DGA Series, 1.5 Hp, Direct Drive, 10-70 Cfm

DM-55DGA-GD Series, Geared Drive, 1.5 Hp, 10-70 Cfm.

### Drum Rollers, Tumblers & Multi-axis Rotators

Closed 5-55 gal. drum mixing: rollers, tumblers or multi-axis rotators of dry or wet compounds (non-hazardous, hazardous, noxious or toxic)

### IBC/Tote/Tank, 200-1000 Gallon Mixer Drives

Pneumatic or electric IBC drives mounted on easy-transfer clamp stand

IBC Mixers with folding turbine or other impellers, supplied separately.

DM-200TAS, IBC Mixer Series, 3/4 Hp air drive, 5-40 Cfm

DM-400TAS, IBC Mixer Series, 1.5 Hp air drive, 10-70 Cfm

DM-600TAS, IBC Mixer Series, 4.0 Hp air drive, 10-130 Cfm

### Air Drive Benefits

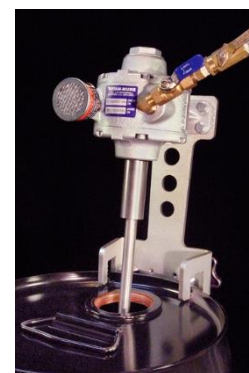
More Economical, Built-in Variable Speed, Easier Handling,  
More Power (torque), Lower Weight and Excellent Longevity



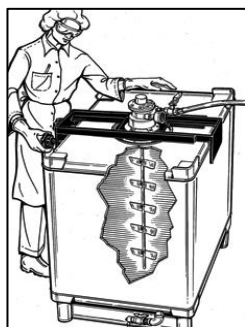
DM-55ADH Series  
Hand-held Mixers



DM-55DGA Series



DM-55RAS Series  
Rim Mount Mixers



Tote (IBC) Tank Mixers



DM-300MAR Multi-Axis Rotator

# Liquid Hand Dispensing Equipment...

## Hand Dispensing Nozzles for Factory, Work Yard, Laboratory, Workshop, Field

### DM-85HFR-FG Series



### Sanitary Duty, High Chemical Resistance Polypropylene Nozzles

Materials of Construction, Options:  
Dispensing Flow Rate:  
Operating Range:  
Nozzle base options:  
Optional Components:

**FG** Polypropylene, Stainless, Hastelloy, Viton, EPDM  
0 – 20 GPM, (0 – 75.7 Liters per Minute)  
0 – 29 PSI, (0 – 199.95 kPa), Temp: 32-125°F  
½", ¾", 1" hose-barb connections  
O-ring service kits, Viton or EPDM, PolyP hose

### DM-85HFR Series



### Industrial Duty, High Chemical Resistance Polypropylene Nozzles

Materials of Construction, Options:  
Dispensing Flow Rate:  
Operating Range:  
Nozzle base options:  
Optional Components:

Polypropylene, Stainless steel, Hastelloy, Viton, EPDM  
0 – 20 GPM, (0 – 75.7 Liters per Minute)  
0 – 29 PSI, (0 – 199.95 kPa), Temp: 32-125°F  
½", ¾", 1" hose-barb connections  
O-ring service kits, Viton or EPDM, PolyP hose

### DM-90HFR Series



### Agricultural Nozzle, Pour-n-Spray, Hi-pressure, 8 Spray Pattern Tips

Materials of Construction:  
Dispensing Flow Rate:  
Operating Range:  
Nozzle Base Options:

Polypropylene, stainless steel, Viton  
0 – 15 Gpm  
0 – 360 Psi, Temp: 34-115°F  
⅜" or ½", straight hose barb or ½" x 90° hose barb

### DM-100HFR Series



### Laboratory Style, Heavy Duty PP Nozzles, Very High Chemical Resistance

Materials of Construction:  
Dispensing Flow Rate:  
Air Pressure Range:  
Nozzle base options:  
Optional Components:

Polypropylene & Viton, external SS spring  
0 – 25 GPM, (0 – 95 litres)  
0 – 40 PSI, (0 – 280kPa) up to 125°F  
Order choice of ½", ¾", or 1" hose barbs  
Maintenance Kit, Viton (4 O-rings)

### DM-700HFR Series



### Extreme Solvent Duty, Hi-Resistance, Aluminum & Teflon Nozzles,

Materials of Construction:  
Heavy wall construction:  
Nozzle Model Specifications:  
Extra large flow passages:  
Nozzle Base Options:

Aluminum, Stainless steel, Teflon  
For extra operation strength and durability  
Up to 50 Gpm, up to 80 Psi up to 120°F  
For low pressure drop and reduced foaming  
Female ½", ¾", 1", 1.5" NPT, Hose-barbs, Swivels

### DM-800HFR Series



### Sanitary Duty Nozzles, Best Chemical Resistance, 316ss & Teflon

Special Safety Feature:  
Materials of Construction, Options:  
Nozzle Model Specifications:  
Nozzle Base Options:

Built-in swivel prevents hose & Operator wrist twisting  
Stainless, Teflon, Viton, Buna  
Up to 50 Gpm, up to 80 Psi up to 120°F  
½", ¾", 1" female NPT, hose-barbs or Tri-Clamp

### DM-800HFR/MA Series



### Aluminum Metering Nozzles, Rough Duty, Good Chemical Resistance

Materials of Construction:  
Nozzle Model Specifications:  
Metering Specifications:  
Nozzle Base Options:

Aluminum, Stainless, Teflon, Acetal  
1.5-15 Gpm (60 LPM), up to 994 Psi, up to 120°F  
+/-0.5% Accuracy, Viscosity: 1-2000 Cps  
½", ¾", 1", female-NPT, hose-barbs available separately

### DM-800HPA Series



### Hand Flow Regulator Assembly & Drum-Drainer for Bulk Transfer

### Sanitary Duty, Rough Duty, Best Chemical Resistance, 316ss & Teflon

Flow Regulator Assembly Sizes  
Hand Lever Valve orientation  
Materials of Construction, (MOC's)  
Pouring Spout sizes  
Viscosity (thickness) Capacity

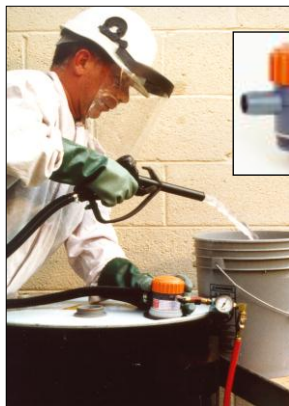
1.0", 1.5", 2.0" NPT, Hosebarb, Tri-Clover bases  
Straight or 90° Ergonomic, for bung or hand pouring  
316ss, Teflon, (For any liquid compatible with MOC's)  
4-8" L spout x 1" (1.05"OD), 1.5" (1.9"OD), 2" (2.37"OD)  
1 to 10,00 Centipoise (Cps) Adjustable flow

# Liquid Transfer Solutions...

## Drums & Tote Pump & Gravity Transfer Equipment For Factory, Field or Shop



***These are examples in our pump line. Ask for the model suited to your Application!***



DM-85DGP Pump

### Model DM-85DGP Drum Dispenser

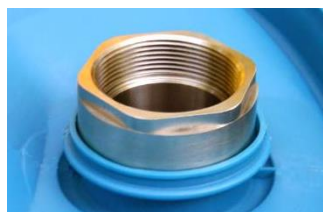
- > Complete kit, competitively priced...with low operating cost
- > Safe for nonflammable liquids compatible with polypropylene
- > Stop cross contamination by using just one pump-per-product
- > Increase operation productivity with nearby dispensing sites
- > Replaces worn and faulty pumps very economically
- > Virtually maintenance free - no internal moving parts
- > Transfers 16 Gpm, 250 Cps (med. thick), 15 ft. head (@ 1 Cps)
- > Corrosion proof - all polypropylene plastic wetted parts
- > (Hand dispensing nozzle and air regulator sold separately)

# Bung Adapters for Drums • Totes • Tanks

ThreadConverters, ThreadReducers & Accessories

## This is a Bung Adapter Thread Sizing Guide

It Accurately Defines your Container Bung Thread Specifications,  
And Provides Model Codes for your Drum or Tote Adapters



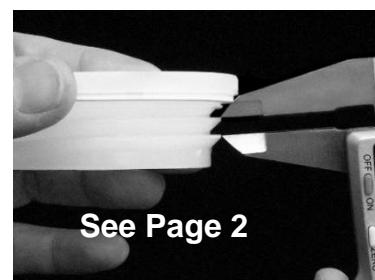
### American Bung ThreadConverter

Metric 65 x 4mm (Buttress)

P# DM-55BCF/B6, 316 Stainless Steel

Sanitary Duty, Military Grade, Conductive

Male 65x4 to 2" Female Npt



See Page 2

For Adapter Part Codes  
See Instructions on Page 2

## Adapter Benefits

- ◆ Easily fit any NPT Equipment into American, Metric or Foreign threads
- ◆ Reduce your Handling Frustration and Speed Equipment Mounting Time
- ◆ Sanitary Duty Adapters Suitable for a Wide Chemical Compatibility Range

## Global Bung Adapter Specifications

- ✓ **Convert:** To two inch or smaller, Female NPT sizes (US National Pipe Thread)
- ✓ **Available:** In *Thread Reduction Sizes*, 1/2", 3/4", 1.0", 1.5" & 2" NPT
- ✓ **Materials:** Sanitary Duty, Reinforced Polypropylene or 316 Stainless Steel

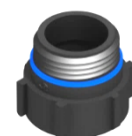
Product Code	Size	Drum Origin	Material
--------------	------	-------------	----------

### American Male Metric ("Buttress") Coarse Thread to NPT Reducers

DM-55BCF/ B or B6	64x5mm x Female 2.0" Npt	USA	PolyP or 316ss
DM-55BCF/ B or B6-150	64x5mm x Female 1½" Npt	USA	PolyP or 316ss
DM-55BCF/ B or B6-125	64x5mm x Female 1¼" Npt	USA	PolyP or 316ss
DM-55BCF/ B or B6-100	64x5mm x Female 1.0" Npt	USA	PolyP or 316ss
DM-55BCF/ B or B6-34	64x5mm x Female ¾" Npt	USA	PolyP or 316ss
DM-55BCF/ B or B6-12	64x5mm x Female ½" Npt	USA	PolyP or 316ss
DM-55BCF/ B or B6-14	64x5mm x Female ¼" Npt	USA	PolyP or 316ss

### Global Metric ThreadConverters (Others available on request.)

Global Code	Size (mm)	Country of Drum Origin	Material
DM-55BCF/564	56 x 4	DE, IT, UK, NL, BE, ES, SE, DK, NO, FR	Polypropylene
DM-55BCF/606	60 x 6	IN	Polypropylene
DM-55BCF/645 /B	64 x 5	American "Buttress" CN	Polypropylene
DM-55BCF/706 /M	70 x 6	European "Mauser" DE, IT, UK, IN	Polypropylene
DM-55BCF/2BN	2" BSP	UK ThreadConverter	Polypropylene



## Can't Find your Adapter Model? Need Something Special?

Ask for other adapter types & *Made to Specification Models*.



IBC Converters



Entegris Adapters



ThreadGuards



Cam-Lock Adapters



ThreadReducers



Tri-Clamp Adapters



TubeGuards

# How to Find your drum bung adapter.



Almost all drums, world-wide, have metric bung-holes (the fill-empty opening), but the thread sizes are commonly different. Checking the **bung plug** thread size is your first step to find your ThreadConverter. Please read, share and file this leaflet for future use.

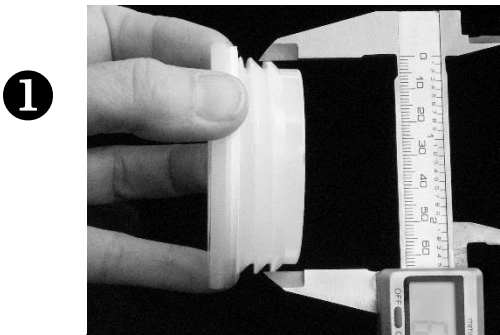
## Benefits for Your Drum Processing Application

- ◆ Now easily fit NPT equipment into metric USA & Foreign drums
- ◆ Speed equipment mounting time and reduce handling frustration
- ◆ Adapters can be used over a broad chemical compatibility range

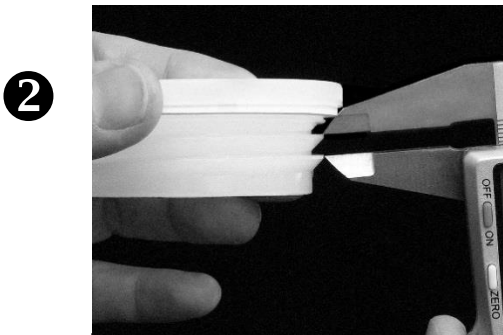


## 3 Easy Steps to find and order your bung ThreadConverter

**NOTE:** Never measure the drum bung-hole opening, or you will get a false dimension.



Measure **bung plug** thread outside diameter (OD) in millimeters within a half (0.5) mm accuracy.



Then measure thread-to-thread spacing, from one thread to the next, within a 1/2 mm accuracy.

3

Compare your plug ThreadConverter measurements closest to an adapter in the **Bung Thread Guide** below. Then email that Product Code to your Drum-Mates Distributor.  
**Adapter Example:** 56mm OD by 4mm thread spacing = 56 x 4, or (DM-55BCF/564)

## Bung Thread Guide (The ThreadConverters below fit 90% of global industrial drums.)

Adapter Part #	Thread Specification (mm)	Country of Drum Origin	Material
DM-55BCF/564	56 x 4 mm to 2" Female NPT	DE, IT, UK, NL, BE, ES, SE, DK, NO, FR	PolyP
DM-55BCF/606	60 x 6 mm to 2" Female NPT	IN (India)	PolyP
DM-55BCF/645	64 x 5 mm to 2" Female NPT	American Buttress, CN, JP	PolyP or 316ss
DM-55BCF/706	70 x 6 mm to 2" Female NPT	European Mauser, DE, IT, GB, IN	PolyP
DM-55BCF/2BN	2.0" BSP to 2.0" Female NPT	GB (UK Commonwealth, AU, CA, IN, IR, NZ, SG)	PolyP
DM-55BTR Series	1/2", 3/4", 1", 1 1/2" F-Npt x 2" M-NPT	ThreadReducers to fit drums for any country	PolyP or 316ss

**Need a different or special adapter model? Ask us for it, or have it Made to Specification.**  
**ThreadConverters, ThreadReducers, ThreadConnectors, ThreadGuards, TubeGuards, etc.**



# Bung-hole ThreadReducers™ in 316ss or Polypropylene

## Safer > Easier > Quicker Equipment Mounting

Safely Mount 1/2", 3/4", 1.0", 1.25", 1.5" and 2.0" Industrial Equipment  
in American Buttress Coarse or NPT Fine Thread Container Bung-holes

### ThreadReducer™ Benefits & Features

- Resistant to virtually any chemically compatible liquid
- Provide secure mounting for all equipment thread sizes
- Reduce mounting time, frustration and thread damage
- Available in 316 Stainless Steel or Polypropylene

### NPT Bung, Drum & IBC ThreadReducers

#### Polypropylene

DM-55BTR/2-12P	2" Male-Npt x 1/2" Female-Npt
DM-55BTR/2-34P	2" Male-Npt x 3/4" Female-Npt
DM-55BTR/2-100P	2" Male-Npt x 1.0" Female-Npt
DM-55BTR/2-125P	2" Male-Npt x 1 1/4" Female-Npt
DM-55BTR/2-150P	2" Male-Npt x 1 1/2" Female-Npt



#### 316 Stainless Steel

DM-55BTR/2-12/S6	2" Male-Npt x 1/2" Female-Npt
DM-55BTR/2-34/S6	2" Male-Npt x 3/4" Female-Npt
DM-55BTR/2-100/S6	2" Male-Npt x 1.0" Female-Npt
DM-55BTR/2-125/S6	2" Male-Npt x 1 1/4" Female-Npt
DM-55BTR/2-150/S6	2" Male-Npt x 1 1/2" Female-Npt



**ThreadReducers**  
Popular Sizes Include:  
1/2", 3/4", 1.0", 1 1/4", 1 1/2" & 2.0"



In American Buttress or NPT bungs  
For drums from virtually anywhere.

### American Buttress Bung ThreadReducers

#### Polypropylene

DM-55BCF/B-12P	2" Male-Buttress x 1/2" Female-Npt
DM-55BCF/B-34P	2" Male-Buttress x 3/4" Female-Npt
DM-55BCF/B-100P	2" Male-Buttress x 1.0" Female-Npt
DM-55BCF/B-125P	2" Male-Buttress x 1 1/4" Female-Npt
DM-55BCF/B-150P	2" Male-Buttress x 1 1/2" Female-Npt



#### 316 Stainless Steel

DM-55BCF/B6-12	2" Male-Buttress x 1/2" Female-Npt
DM-55BCF/B6-34	2" Male-Buttress x 3/4" Female-Npt
DM-55BCF/B6-100	2" Male-Buttress x 1.0" Female-Npt
DM-55BCF/B6-125	2" Male-Buttress x 1 1/4" Female-Npt
DM-55BCF/B6-150	2" Male-Buttress x 1 1/2" Female-Npt



Need another size Bung Adapter? Let us know your specifications > [jbrinkerhoff@am-ind.com](mailto:jbrinkerhoff@am-ind.com)



HQ & NJ Sales Office  
Rahway, NJ  
800-864-2660

New England Reg Office  
Springfield, VT  
800-225-6711

Northern NJ Reg Office  
Fair Lawn, NJ  
800-622-1363

PA Regional Office  
Stroudsburg, PA  
855-207-0400

Jim Brinkerhoff, Product Manager  
732-574-1111, [jbrinkerhoff@am-ind.com](mailto:jbrinkerhoff@am-ind.com)

[www.am-ind.com](http://www.am-ind.com)