



**THE ORCHARD**  
LUXURY APARTMENT HOMES





---

Treat yourself to the best in luxury living at The Orchard. This luxury apartment and townhome-style community offers large, stylish floor plans that include an array of modern amenities and sophisticated custom features. Situated in a beautiful, natural setting, and located just minutes from major expressways, superior shopping and fine dining, The Orchard Luxury Apartment Homes are the perfect place to call home.

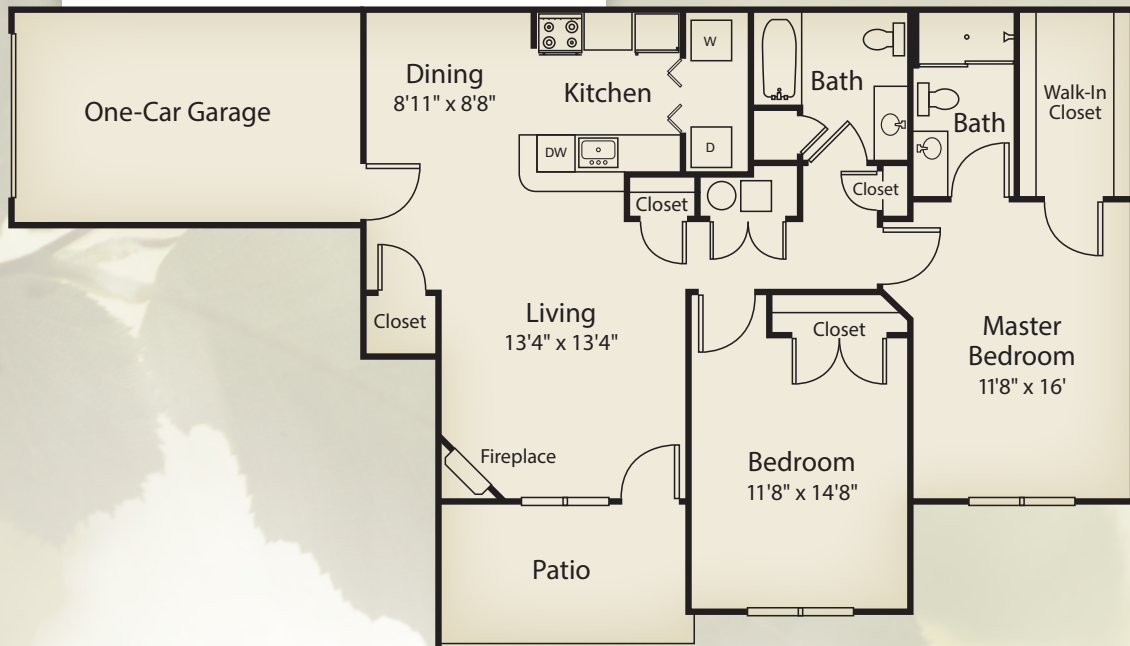
---

## Features

- Extra-large floor plans
- Attached one or two car garage with opener
- Full-size in-suite washer and dryer
- Upgraded finishes
- Stainless steel appliances including microwave
- Wood grain planked flooring
- Ceramic tile
- Granite countertops
- Gas fireplace in every suite
- 9 ft. ceilings
- Ceiling fans
- Cathedral ceilings available
- Private entrances
- Keyless entry at garage door
- Clubhouse with fitness center and complimentary WiFi
- Sparkling pool and Jacuzzi
- Pets welcome (conditions apply)
- Fenced-in "Bark Park"

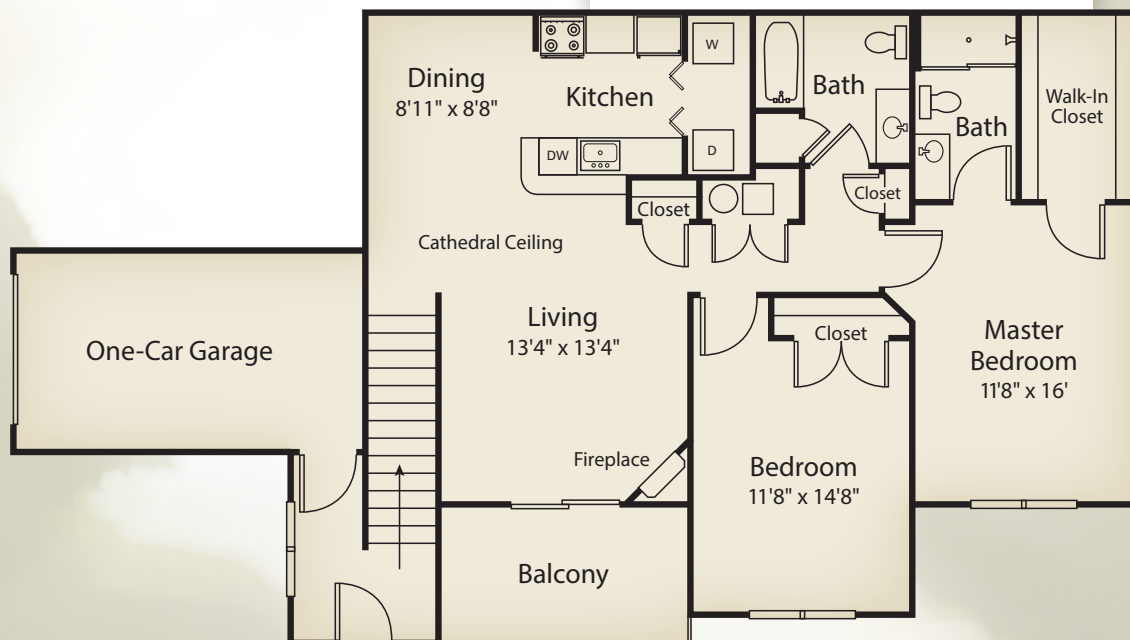
## Aspen

Two Bedroom, Two Bath Apartment  
1,195 square feet (First Floor)

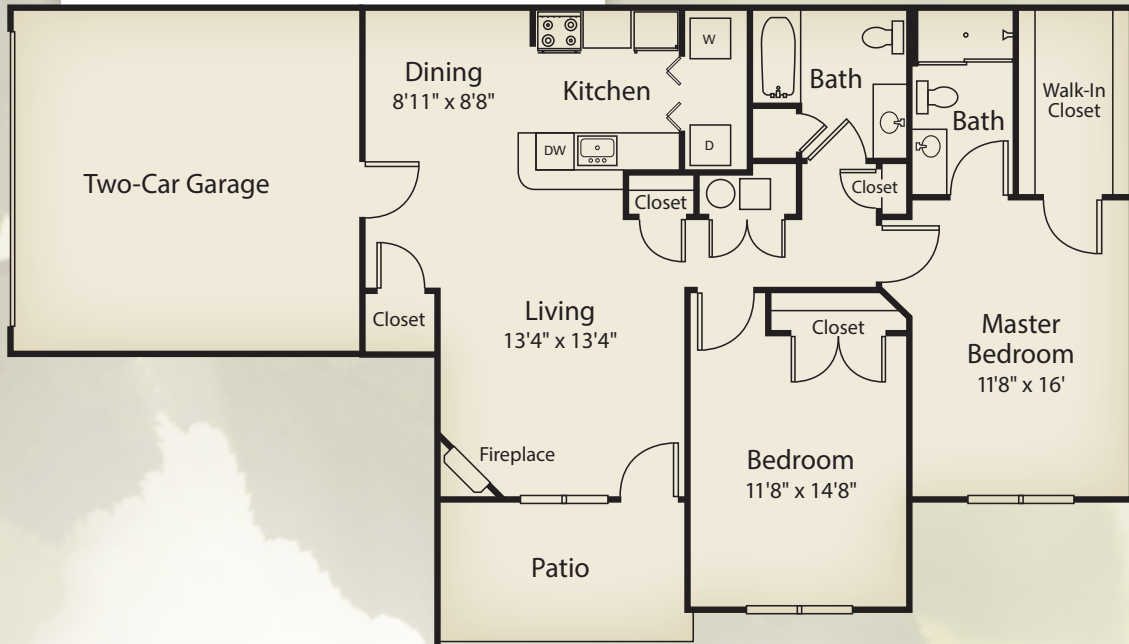


## Birch

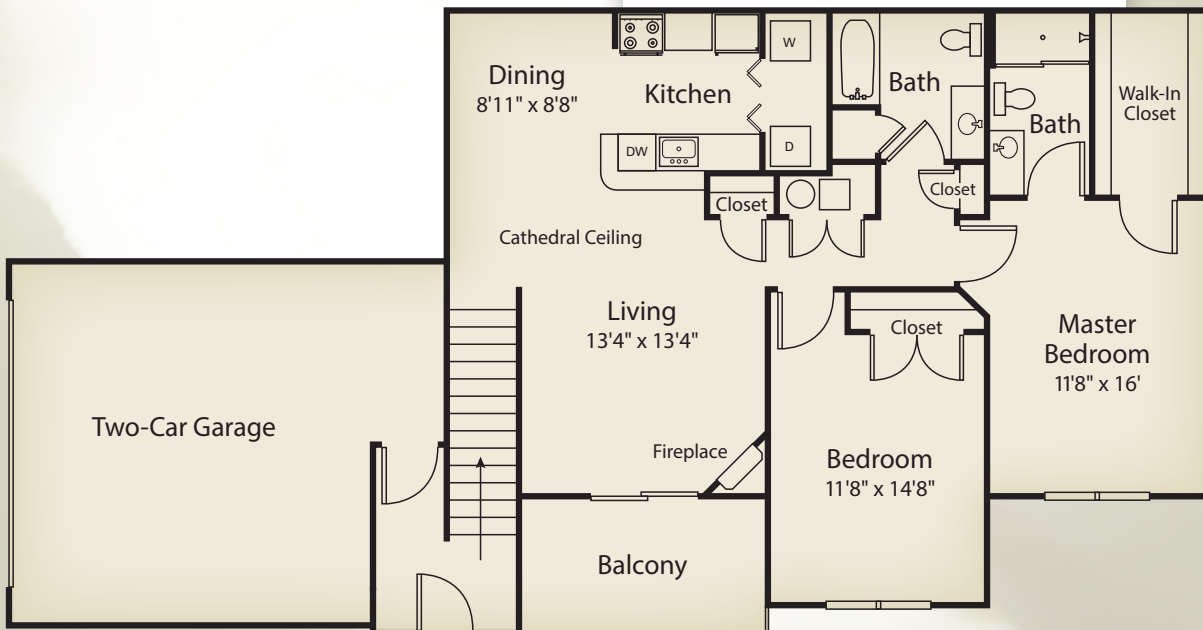
Two Bedroom, Two Bath Apartment  
1,304 square feet (Second Floor)



**Aspen II**  
 Two Bedroom, Two Bath Apartment  
 1,195 square feet (First Floor)

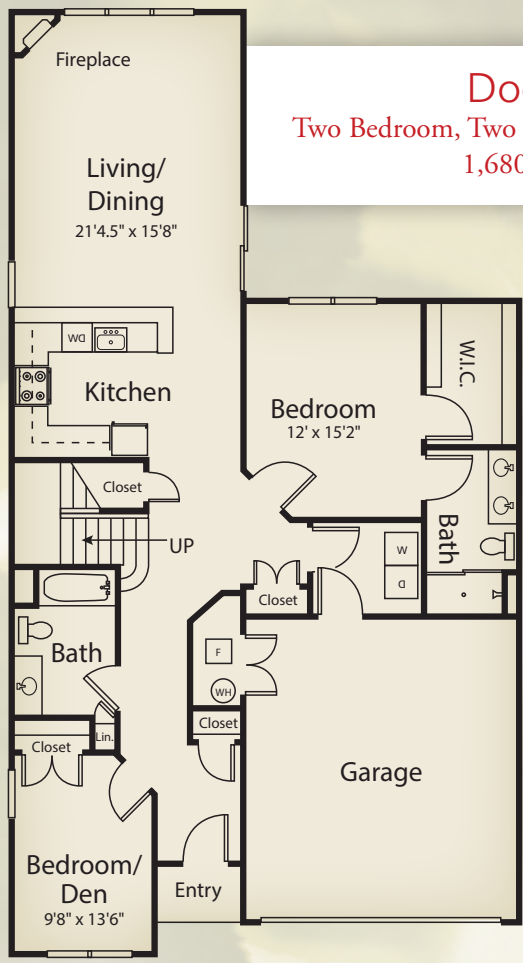
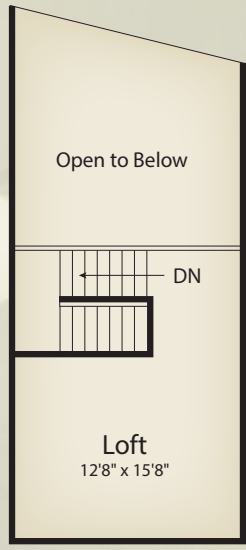


**Birch II**  
 Two Bedroom, Two Bath Apartment  
 1,304 square feet (Second Floor)



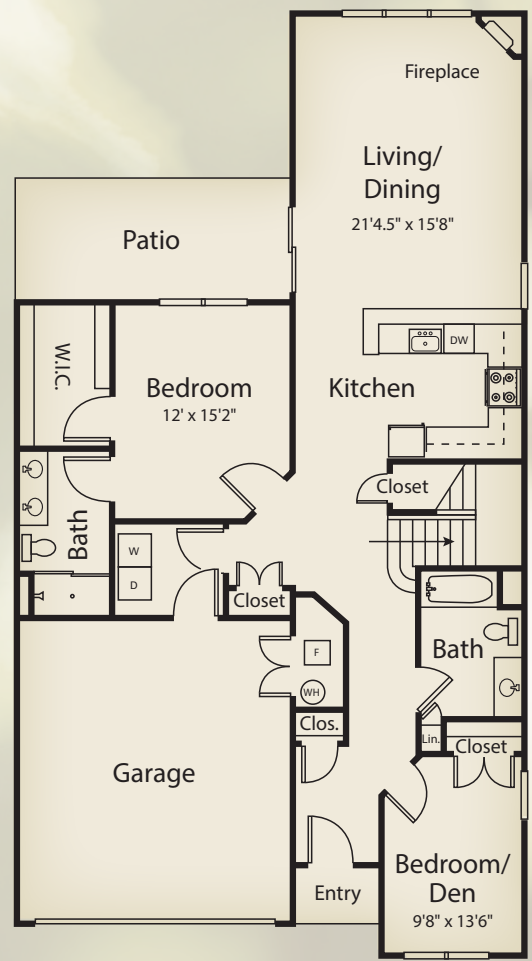
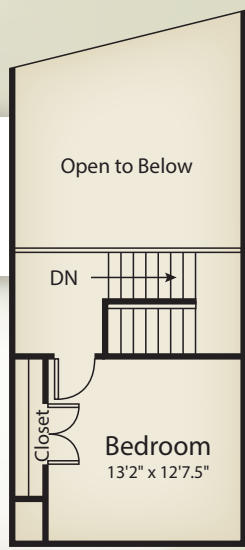
## Dogwood

Two Bedroom, Two Bath Townhome with Loft  
1,680 square feet



## Evergreen

Three Bedroom, Two Bath Townhome  
1,680 square feet

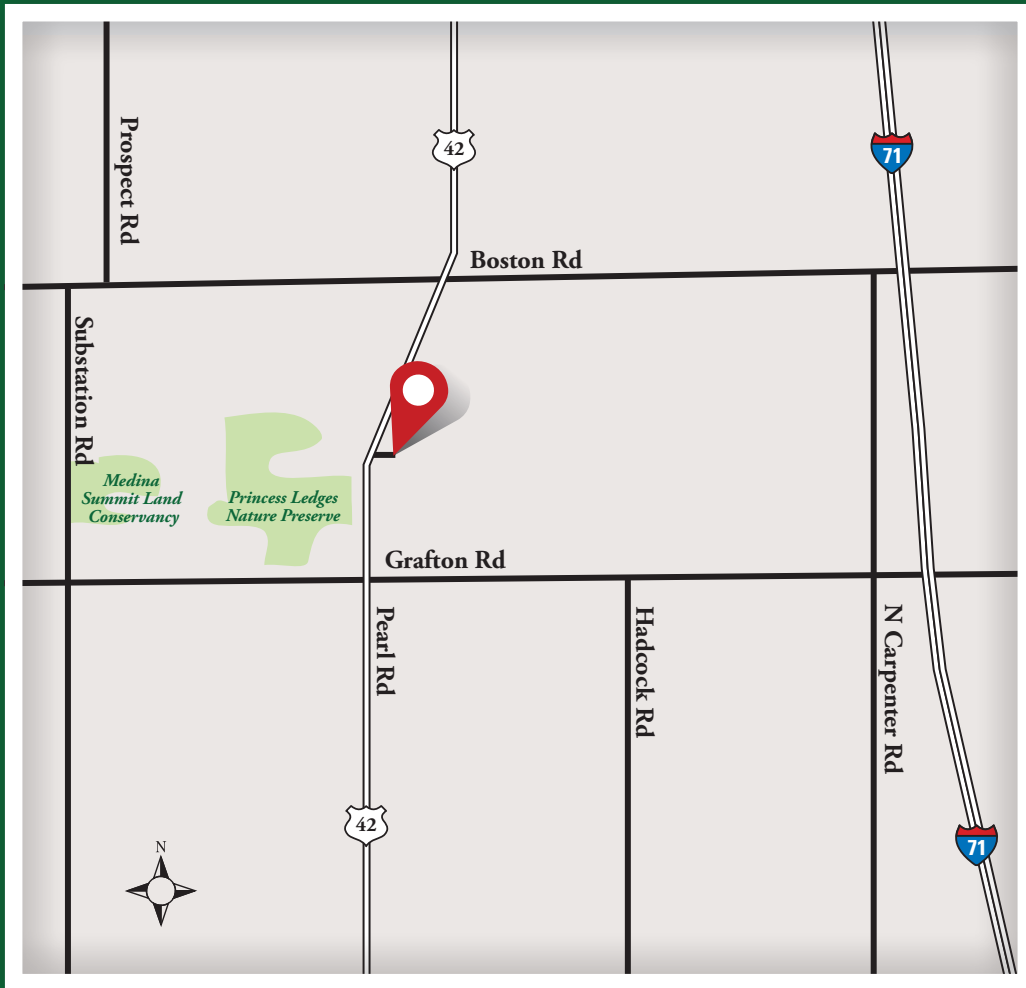


Room dimensions and square footages are approximate





Click For Directions



252 Cider Mill Lane  
Brunswick, OH 44212

234-803-2055

Email: [TheOrchard@Harsax.com](mailto:TheOrchard@Harsax.com)

[TheOrchardofBrunswick.com](http://TheOrchardofBrunswick.com)



Professionally managed by  
Harsax Management Company

