

THE

RE
LE
THE
C
AR

OVERVIEW

With easy access to Fishtown and Center City — and surrounded by some of Philadelphia's most vibrant destinations — The Archer is right where you want to be. Located in the heart of Northern Liberties at the corner of Girard Avenue and Howard Street, The Archer offers brand new studio, one-, and two-bedroom apartments. Cozy, light-filled interiors, balconies built for a moment of pause, and inviting shared spaces come together to create your bridge to modern living.



WELCOME TO THE ARCHER

AT 130 W. GIRARD AVENUE

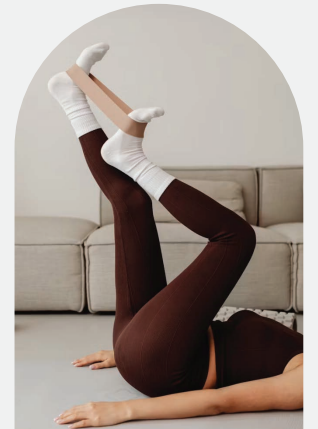
Step inside and feel the difference. From functional studios to expansive two-bedrooms, each apartment at The Archer is designed to complement your everyday — with warm finishes, abundant natural light, and layouts that flow with your life. Whether you're beginning a new chapter or seeking a fresh perspective, you'll discover a space that feels like it was made for you.



OVERVIEW



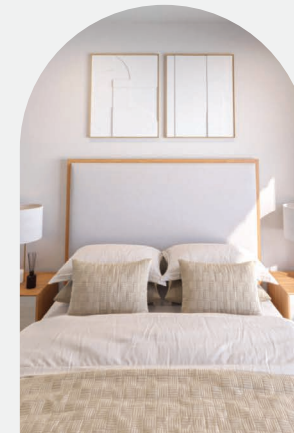
APARTMENTS



AMENITIES



NEIGHBORHOOD



FLOOR PLANS



CONTACT

COMFORT, CHARACTER & CREATIVE ENERGY

At The Archer, home extends beyond your front door. Tucked into the creative core of Northern Liberties, it's a place where easy comfort meets everyday inspiration. With well-crafted spaces and an effortless flow between indoors and out, The Archer is designed to meet you right where you are — and grow with you from there.





① YOUR PLACE TO PLUG IN – OR POWER DOWN

Studios, one-, and two-bedroom apartments are filled with natural light and grounded in a palette of warm wood tones and urban marble accents.



②

MODERN LIVING, MADE EFFORTLESS

With layouts ranging from 400 to 885 square feet, these apartments are made to flex around your lifestyle. Whether you're hosting friends, working from home, or finding a moment to reset, the space supports every version of your day.

③

FEATURES THAT FIT YOUR FLOW

The kitchens feature seamless wood-like cabinets, sleek quartz islands, and stainless steel hardware. Each apartment comes equipped with a full appliance package, including a washer and dryer, dishwasher, garbage disposal, and an ice maker in the fridge. Central air ensures comfort year-round.



④

THOUGHTFUL TOUCHES, ALL AROUND YOU

The bathroom is your personal retreat, offering a serene escape with soft lighting, soothing finishes, and just the right amount of space to unwind. Whether you're enjoying a relaxing bath, refreshing shower, or simply taking a moment for yourself, it's the perfect place to reset and recharge.



Open and inviting, the living room is your go-to space for everyday ease. It's where morning coffee meets movie nights, and natural light meets personal style – a space that effortlessly shifts from solo downtime to hosting mode.



Tucked away from the city's rhythm, the bedroom is your private reset. Soft tones, clean lines, and room to truly rest – it's designed for deep sleep, slow starts, and everything in between.





LIVE WELL, TOGETHER

At The Archer, connection comes easy. From thoughtfully designed common spaces to everyday conveniences that make life smoother, everything is built to bring people together — and help you feel right at home.

THE DETAILS THAT MAKE A DIFFERENCE

From a spacious 24/7 fitness studio to a cozy rooftop retreat, The Archer offers just what you need to recharge and reconnect. With shared spaces designed for ease and steps from the Girard Avenue Station, life here moves a little smoother – whether you're heading into the city or settling in at home.



Rooftop Terrace

①

VIEWS, VIBES, AND OPEN SKY

Whether you seek moments of peaceful tranquility or want to host friendly get-togethers, our roof top creates the perfect setting.



Gym

②

MOVE AT YOUR OWN PACE

Keep active and achieve your wellness goals conveniently and effectively in our sweat-proof fitness center.

③

PROPERTY FEATURES

24/7 Fitness Center
Furnished Roof Deck
24/7 Controlled Access
Pet-Friendly
Parking
Post & Parcel Services

Bicycle Storage
24/7 Emergency Maintenance
High-Speed WiFi in Common Areas
Easy Access to Center City,
Philadelphia Suburbs, and New Jersey

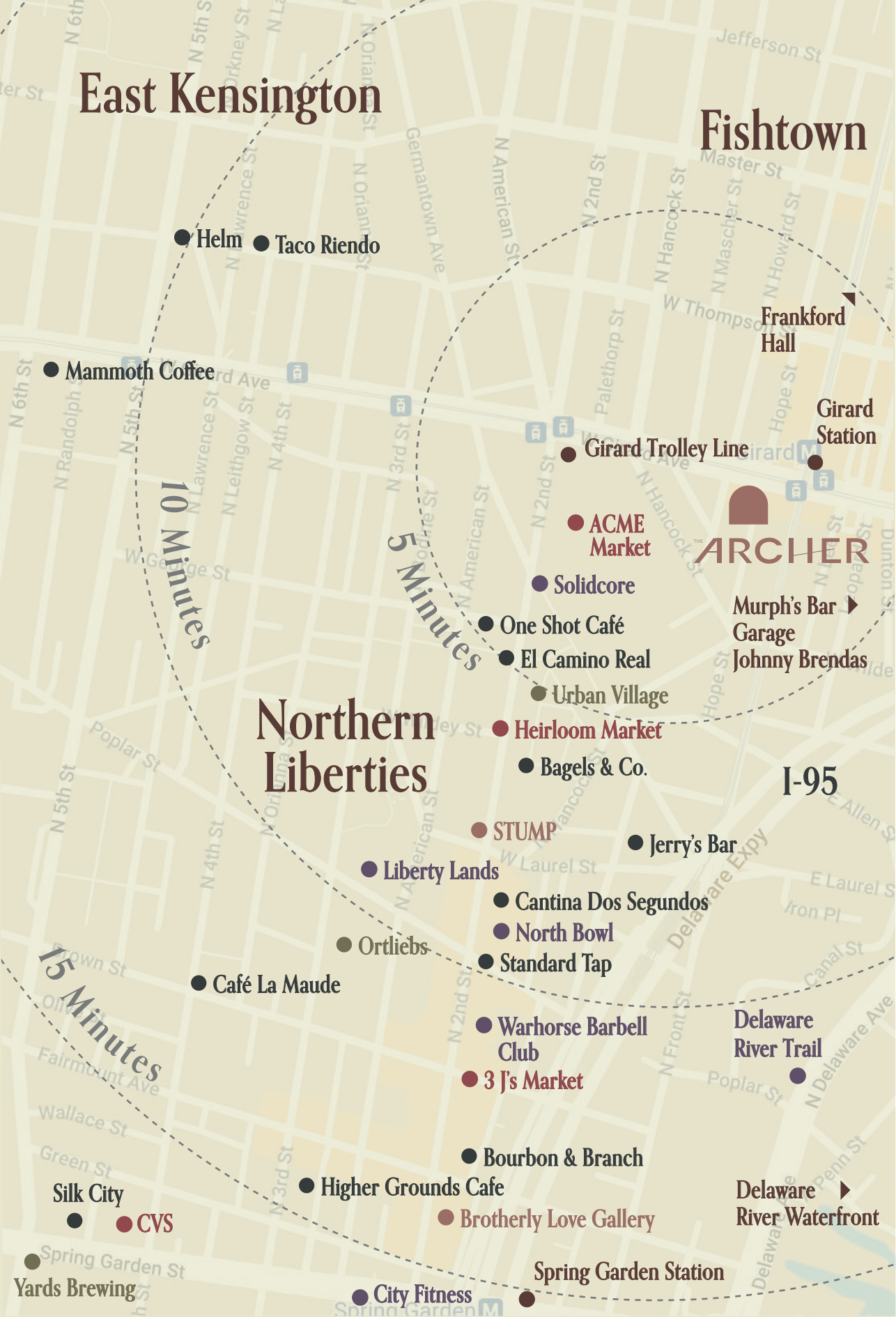


Gym

NORTHERN LIBERTIES IN THE HEART OF IT ALL

Situated in Northern Liberties, one of Philadelphia's most dynamic neighborhoods, The Archer offers a front-row seat to everything that makes city living exciting. With walkable access to local cafés, creative studios, greenspaces, and nightlife, this location pairs community charm with the kind of energy that makes you feel at home instantly.





NORTHERN LIBERTIES - FISHTOWN - EAST KENSINGTON

NEIGHBORHOOD HIGHLIGHTS



Food & Drink

- One Shot Cafe - 5 minute walk
- Cafe La Maude - 14 minute walk
- Honey's Sit N Eat - 16 minute walk
- El Camino Real - 5 minute walk
- Bagels & Co. - 4 minute walk
- Standard Tap - 8 minute bike
- Urban Village Brewing - 4 minute walk
- Ortliebs - 10 minute walk
- Yards Brewing - 8 minute bike
- Helm - 10 minute walk
- Mammoth Coffee - 8 minute walk
- Taco Riendo - 10 minute walk
- Murph's Bar - 5 minute walk
- North Third - 4 minute bike
- Garage - 5 minute walk
- Frankford Hall - 5 minute walk
- Johnny Brendas - 5 minute walk



Daily Life

- Acme Market - 12 minute walk
- Heirloom Market - 7 minute walk
- Amazon Drop-Off - 10 minute bike
- CVS - 12 minute walk
- Stump - 6 minute walk
- Brotherly Gallery - 15 minute walk



Parks & Green Space

- Liberty Lands Park - 8 minute walk
- Poplar Park - 5 minute walk
- Delaware River Trail - 6 minute bike
- North Bowl - 10 minute walk
- Solidcore - 2 minute walk

Transportation

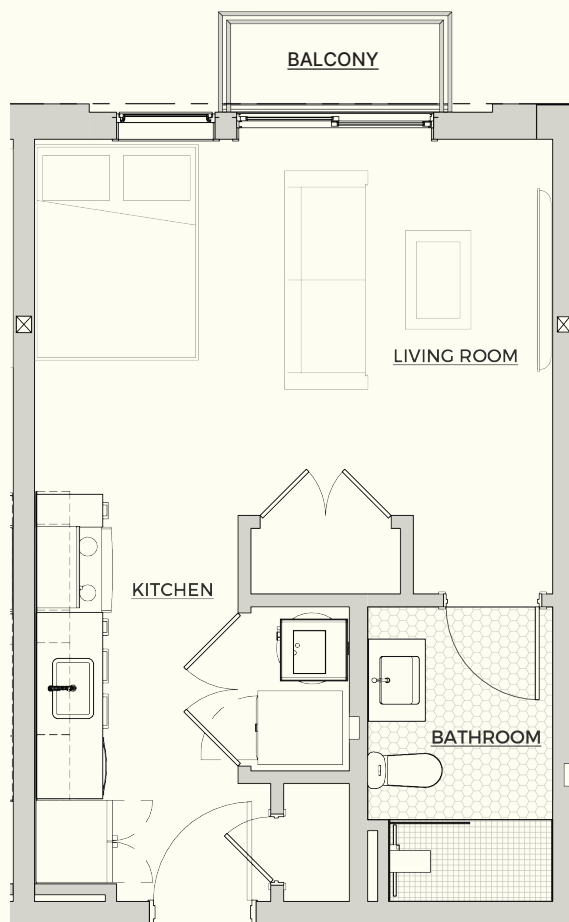
- Girard Station - 2 minute walk
- Girard Trolley Line - 1 minute walk
- Broad Street Line - 10 minute bike

ROOM TO LIVE YOUR WAY

From studios to spacious one- and two-bedroom apartments, The Archer has you covered. Each apartment is thoughtfully designed with comfort and style in mind — the perfect space to call home.



STUDIO

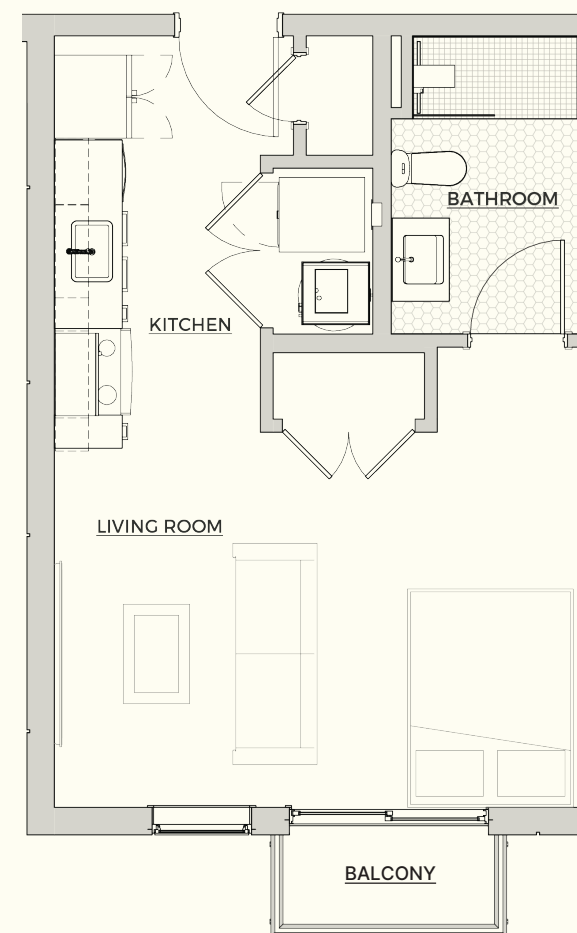


STUDIO A

UNITS:

209
309
409
509
609
709

STUDIO

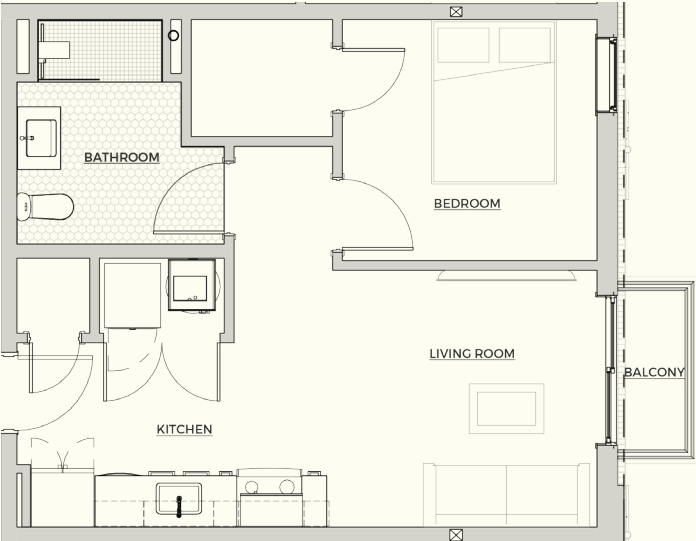


STUDIO B

UNITS:

210 510
212 512
310 610
312 612
410 710
412 712

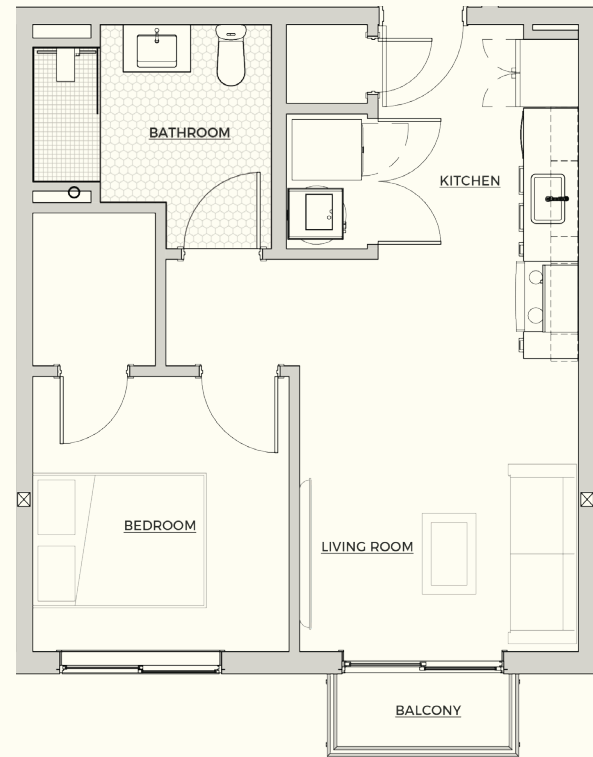
1-BEDROOM



1-BEDROOM A

UNITS:

202	311	503	613
203	313	507	702
207	402	511	703
211	403	513	707
213	407	602	711
302	411	603	713
303	413	607	
307	502	611	

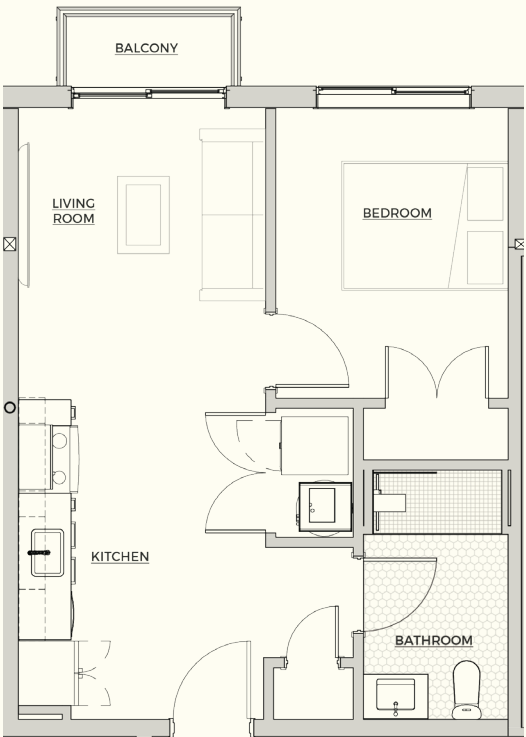


1-BEDROOM B

UNITS:

205
305
405
505
605
705

1-BEDROOM

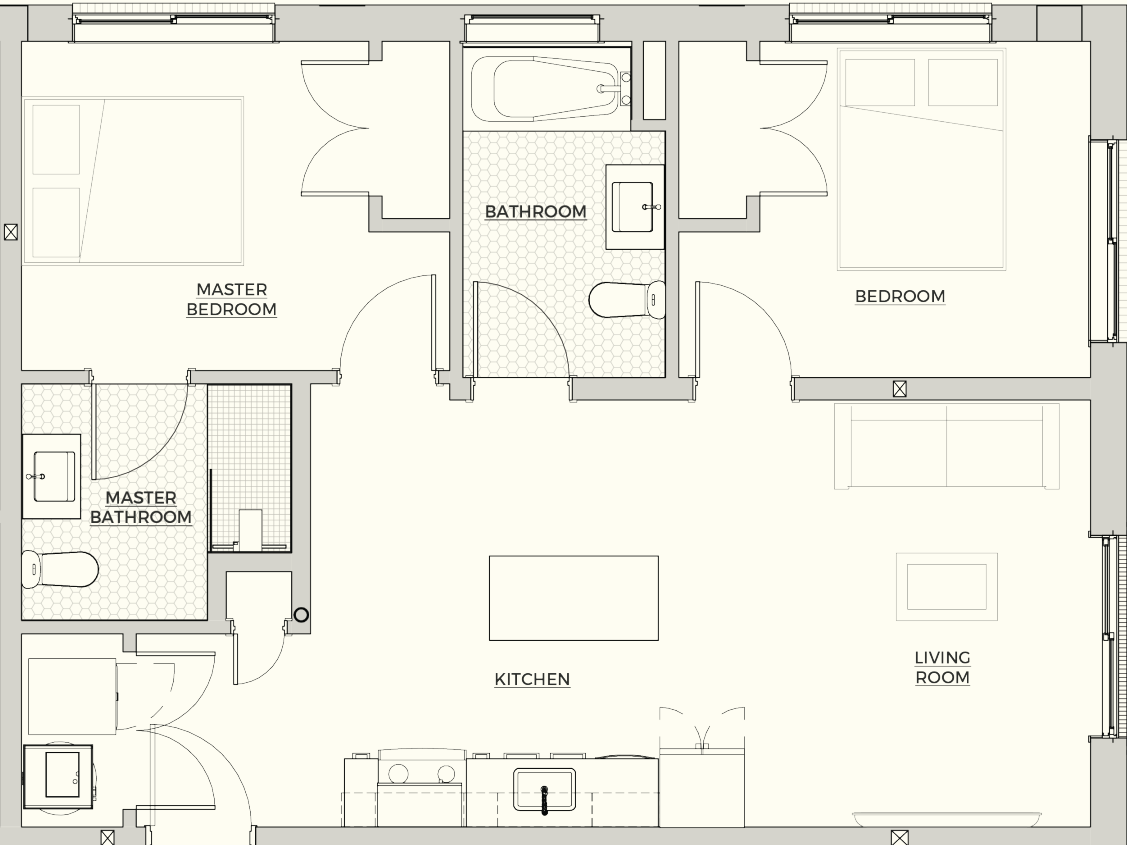


1-BEDROOM C

UNITS:

204	504
206	506
304	604
306	606
404	704
406	706

2-BEDROOM



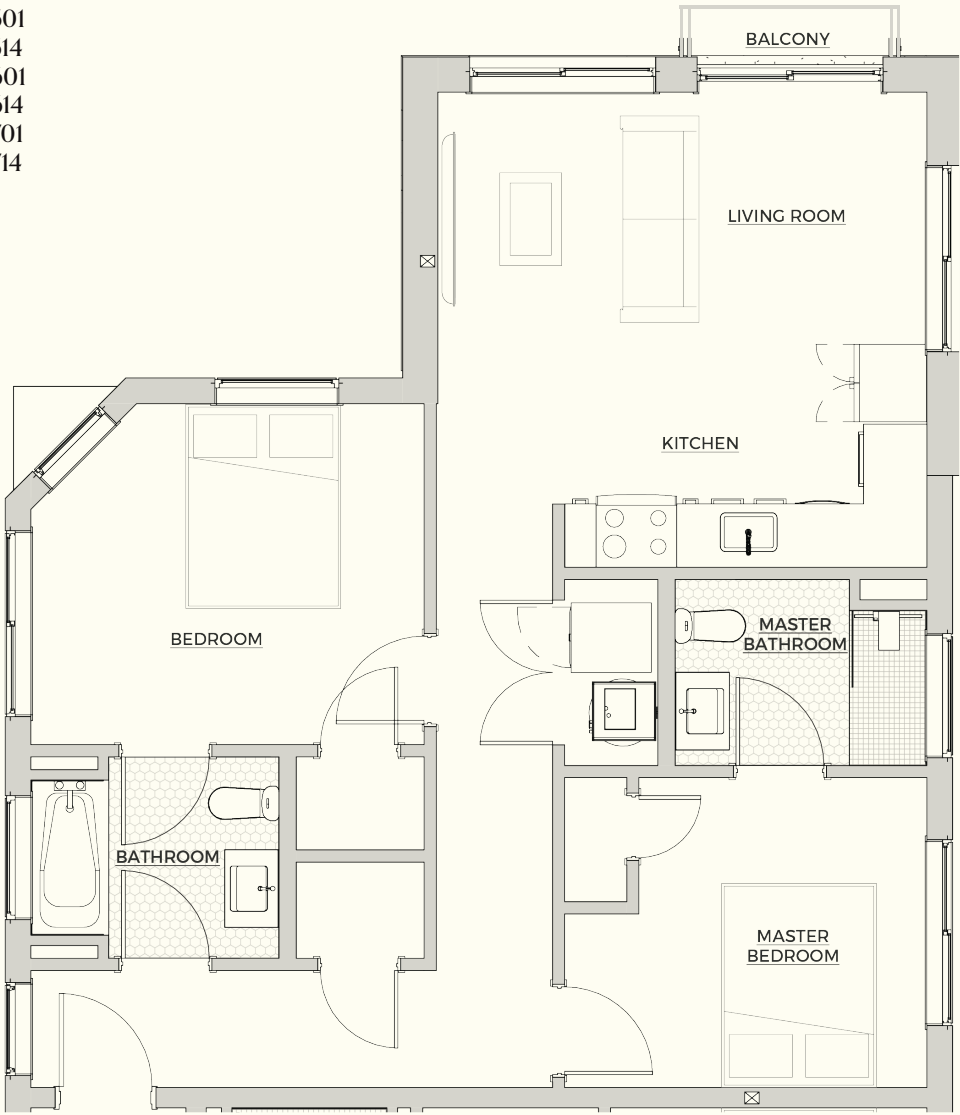
2-BEDROOM A

- UNITS:
- 208
 - 308
 - 408
 - 508
 - 608
 - 708

2-BEDROOM

2-BEDROOM B

- UNITS:
- 201
 - 214
 - 301
 - 314
 - 401
 - 414
 - 501
 - 514
 - 601
 - 614
 - 701
 - 714





THE ARCHER

130 WEST GIRARD AVENUE
PHILADELPHIA, PA 19123

GET IN TOUCH

Like what you've seen? We'd love to meet you and answer any questions you may have. We offer in-person consultations and walk through tours of THE ARCHER and any available unit.

EMAIL: leasing@hightopdevelopment.com

PHONE: 215-246-0606

WEBSITE: hightoprents.com/the-archer



Hightop Real Estate & Development is a full service investment real estate company focused on the acquisition, development and management of commercial and residential real estate in the Greater Philadelphia region.

The Hightop principals have more than 50 years of combined experience and success in real estate acquisition, construction, leasing and development. As a result of our wide-breadth of expertise and abilities we are able to be nimble and aggressive in the market to acquire and develop a wide variety of asset classes.

HightopDevelopment.com