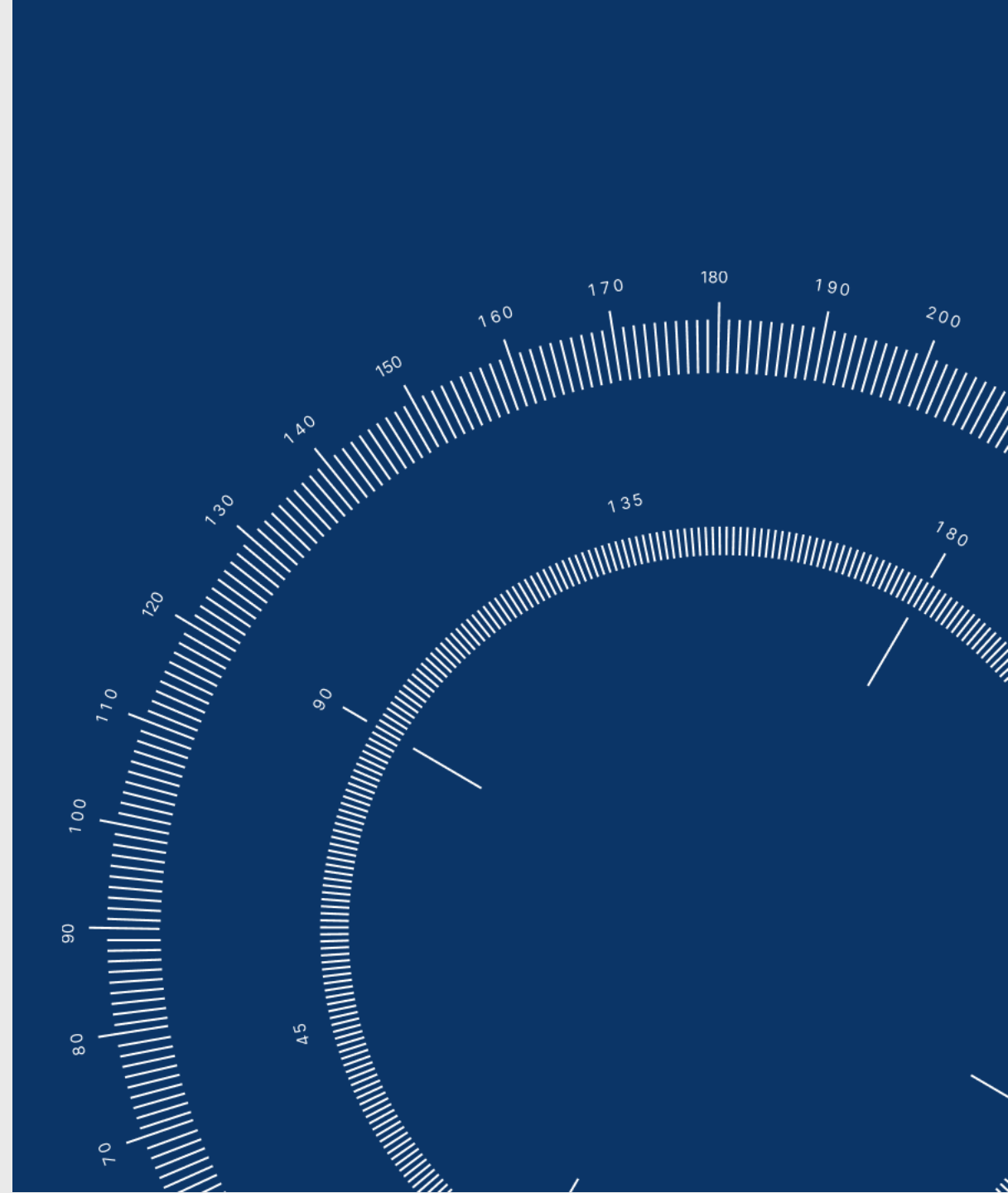



# ***Topics:***

- Tank Cleaning observations **nearby – or within** MPA
- SCG **Observations/Detections** of Tank Cleaning Residues in Helcom & Bonn Areas
- Specific **Tall Oil Observations**





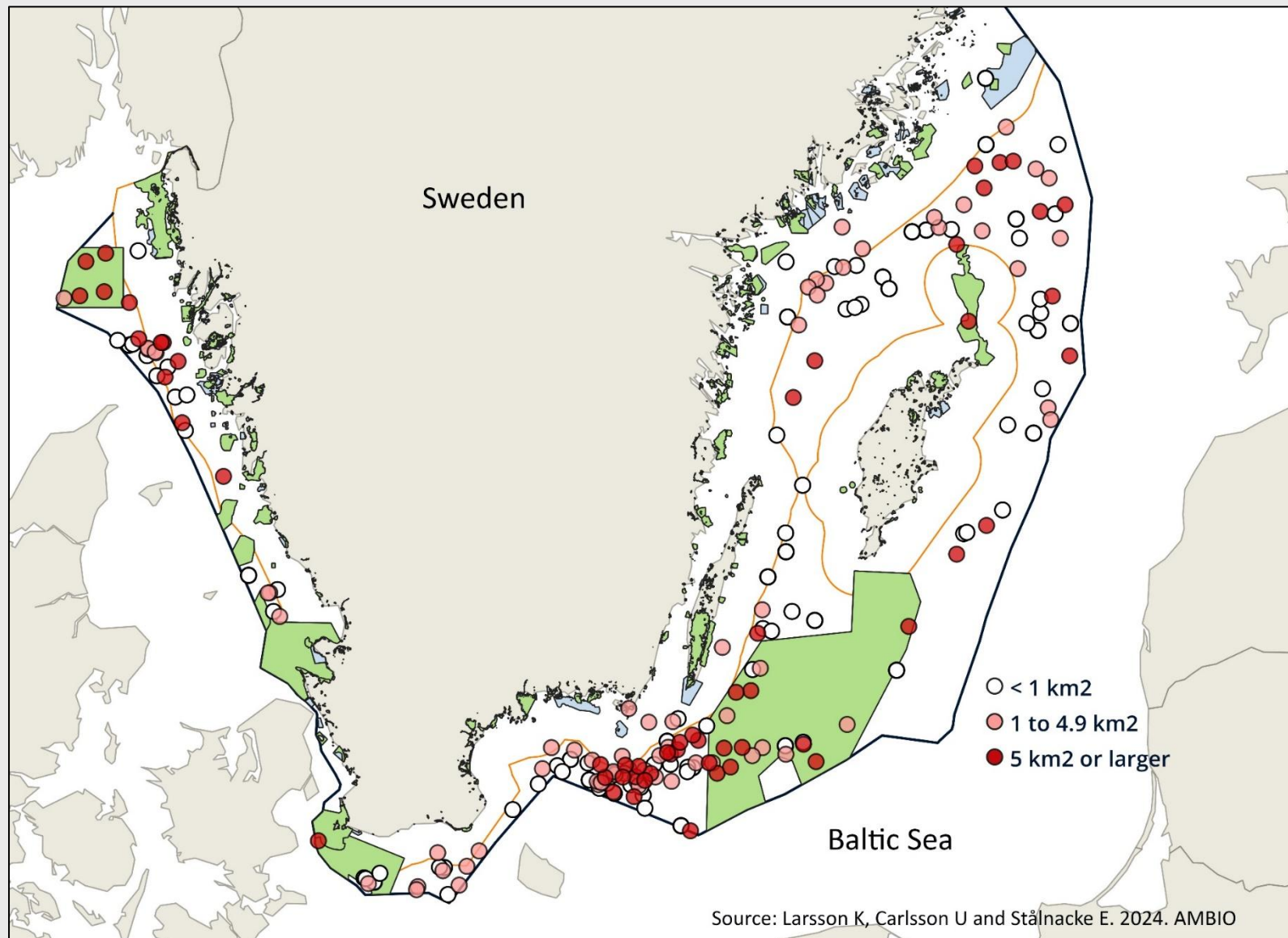
# “Discharges of non-petroleum substances from chemical tankers in Swedish marine Natura 2000..”

<https://doi.org/10.1007/s13280-024-02103-7>

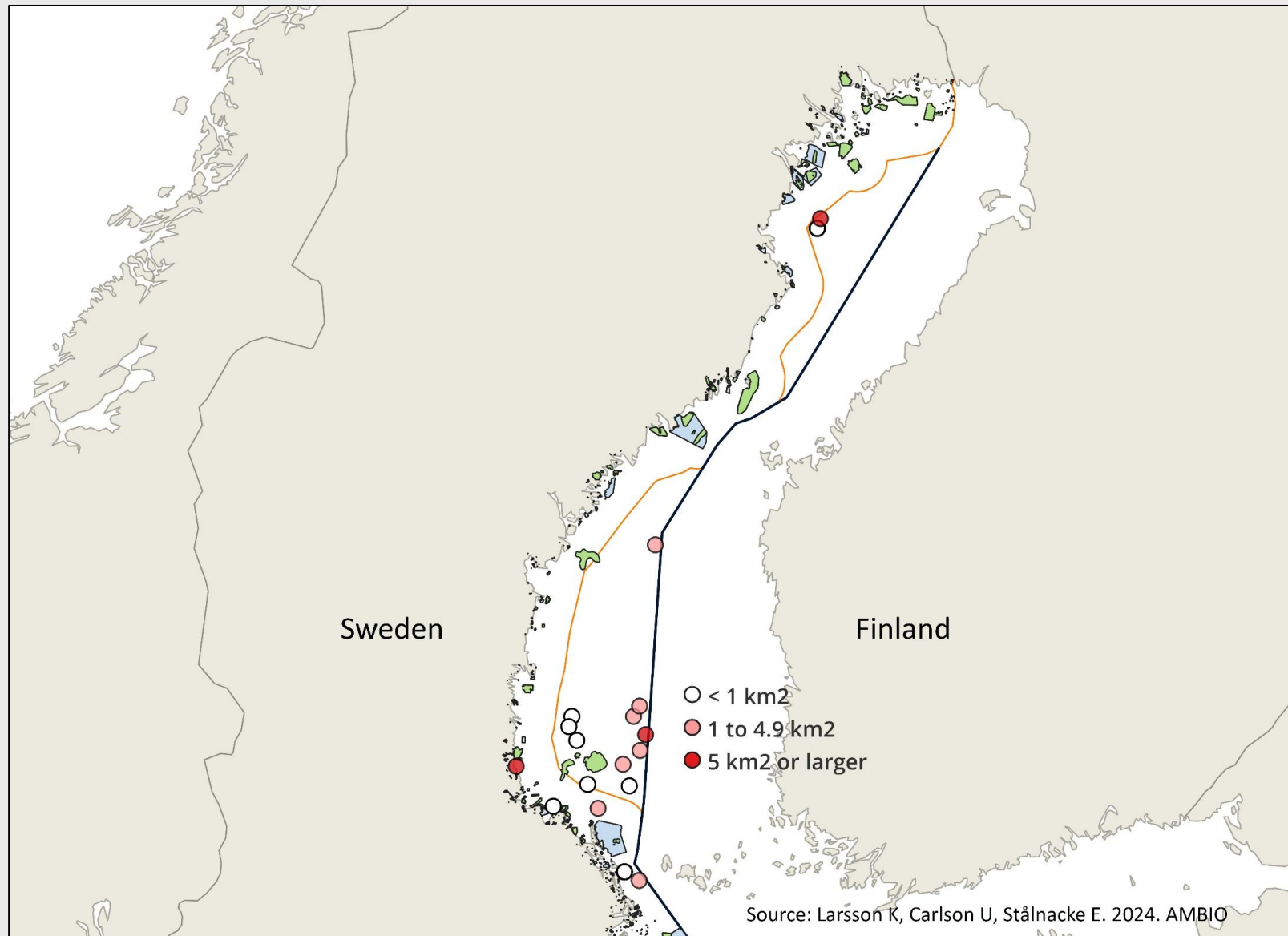


**KUSTBEVAKNINGEN**  
SWEDISH COAST GUARD





Location of detected discharges of non-petroleum substances in the southern part of the Swedish territorial sea and Swedish EEZ between 2020 and 2023. Size of discharges are indicated by the colour of dots. Green areas show coastal and marine Natura 2000 sites.

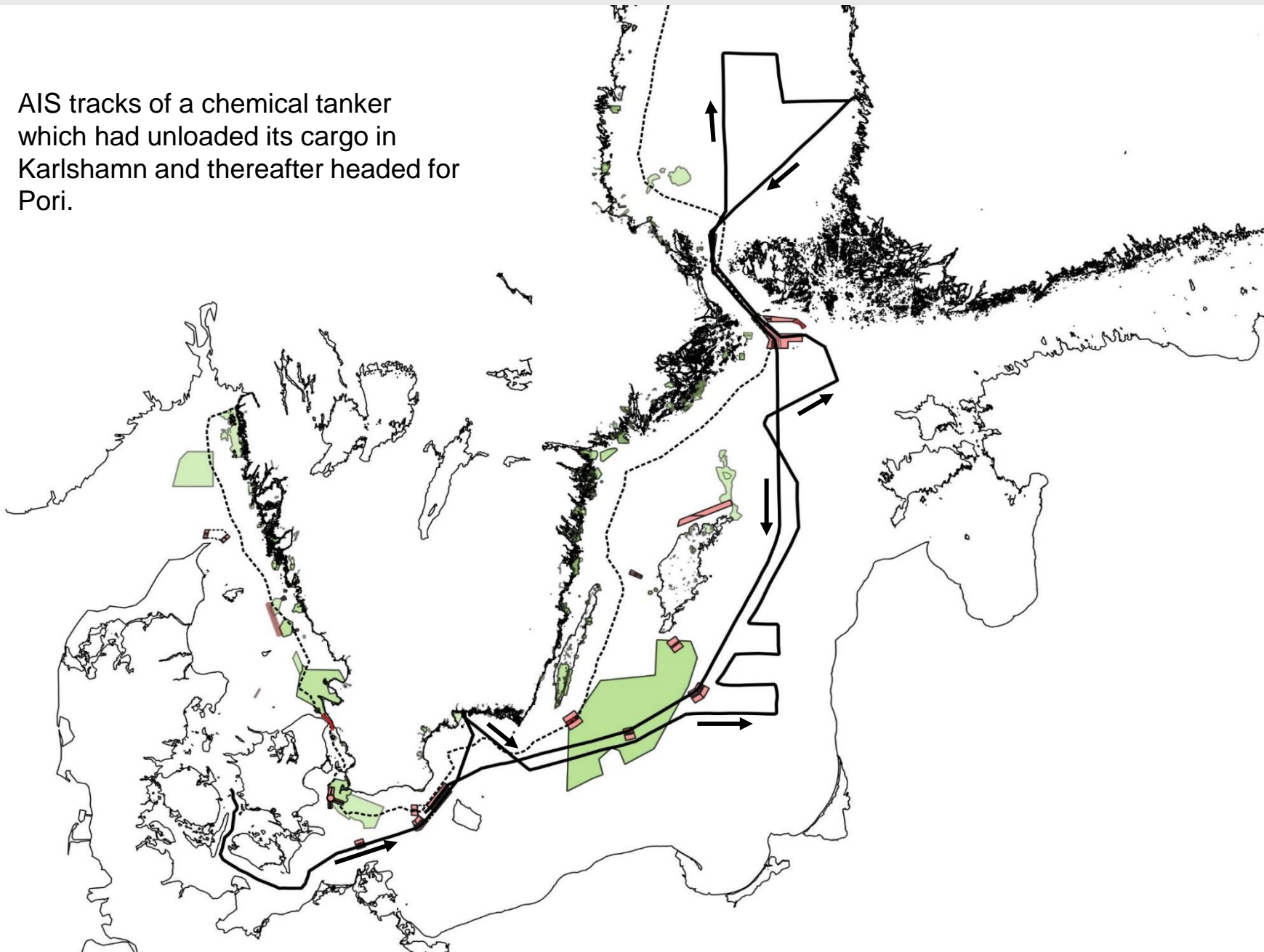


Location of detected discharges of non-petroleum substances in the northern part of the Swedish territorial sea and Swedish EEZ between 2020 and 2023. Size of discharges are indicated by the colour of dots. Green areas show coastal and marine Natura 2000 sites.

**Table 1.** Number of detected discharges of non-petroleum substances in Swedish territorial sea, Swedish EEZ and in marine protected areas

Year	Total number of detected discharges	In Swedish territorial sea	Percent in Swedish territorial sea	In Swedish EEZ	Percent in Swedish EEZ	Within Natura 2000 sites	Within nature reserves outside Natura 2000 sites	Percent within marine protected areas
2020	53	7	13.2	46	86.8	11	1	22.6
2021	57	12	21.1	45	78.9	5	0	8.8
2022	54	5	9.3	49	90.7	6	0	11.1
2023	69	13	18.8	56	81.2	11	0	15.9
Total	233	37	15.9	196	84.1	33	1	14.6

AIS tracks of a chemical tanker  
which had unloaded its cargo in  
Karlshamn and thereafter headed for  
Pori.

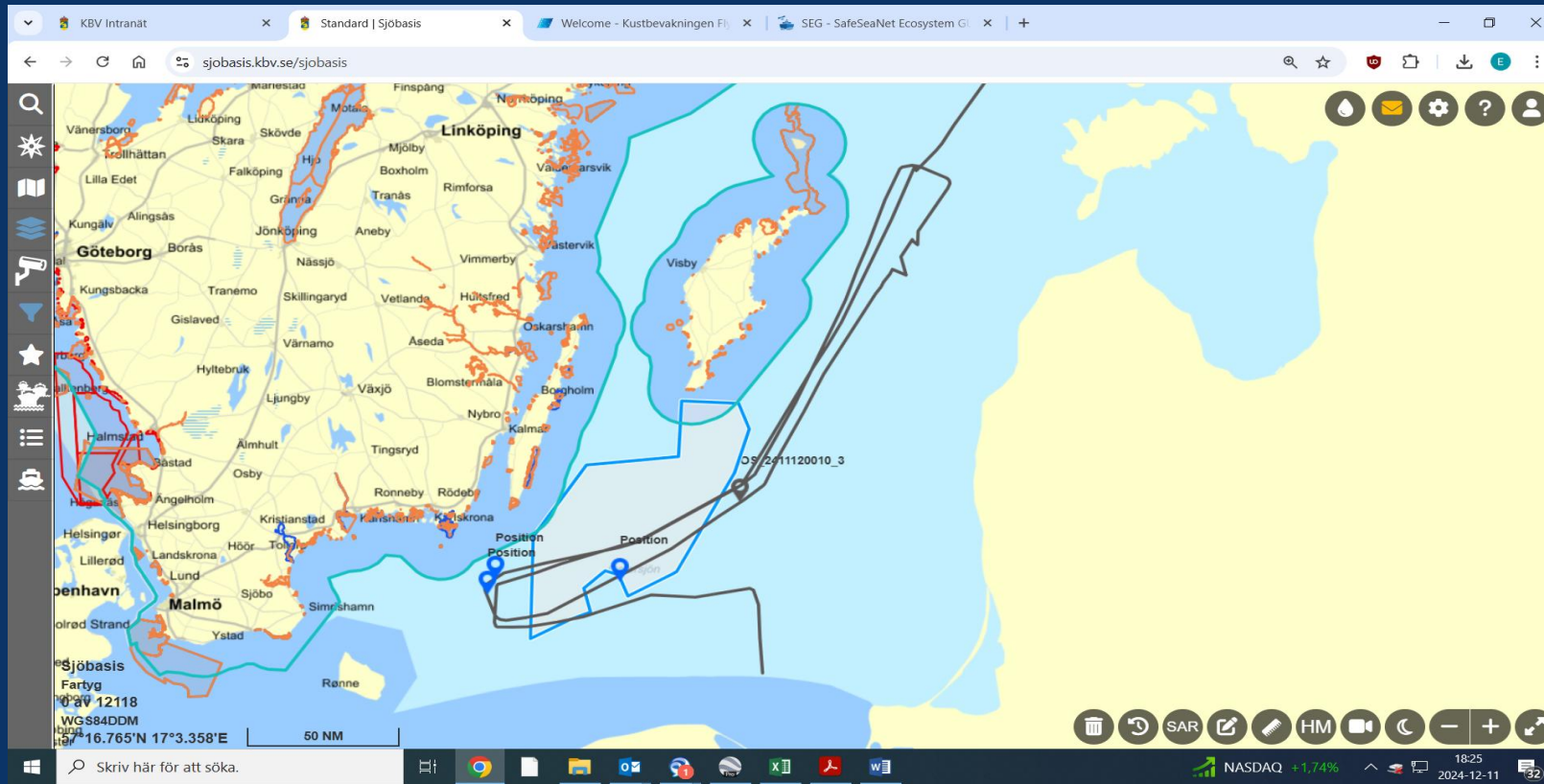


# CONCLUSION

- ***Large numbers of legal and illegal discharges*** of non-petroleum substances from chemical tankers were detected annually in the Baltic Sea, including in ***marine protected Natura 2000 sites***, and the trend is increasing.
- Discharges of vegetable oils, other bio-based oils and biofuels may be as ***dangerous as discharges of petroleum*** oils for many marine organisms.
- We conclude that the regulations in the IMO MARPOL convention ***Annex II are not strict enough*** to meet the objectives of EU nature legislation regarding protection of sensitive marine species and habitats.

Tall oil





Chemical tanker route through the Baltic sea, tank cleaning, enroute from Gulf of Finland to Poland. Discharge residues of Tall Oil.  
Blue markers along the route shows EMSA satellite detections of slicks

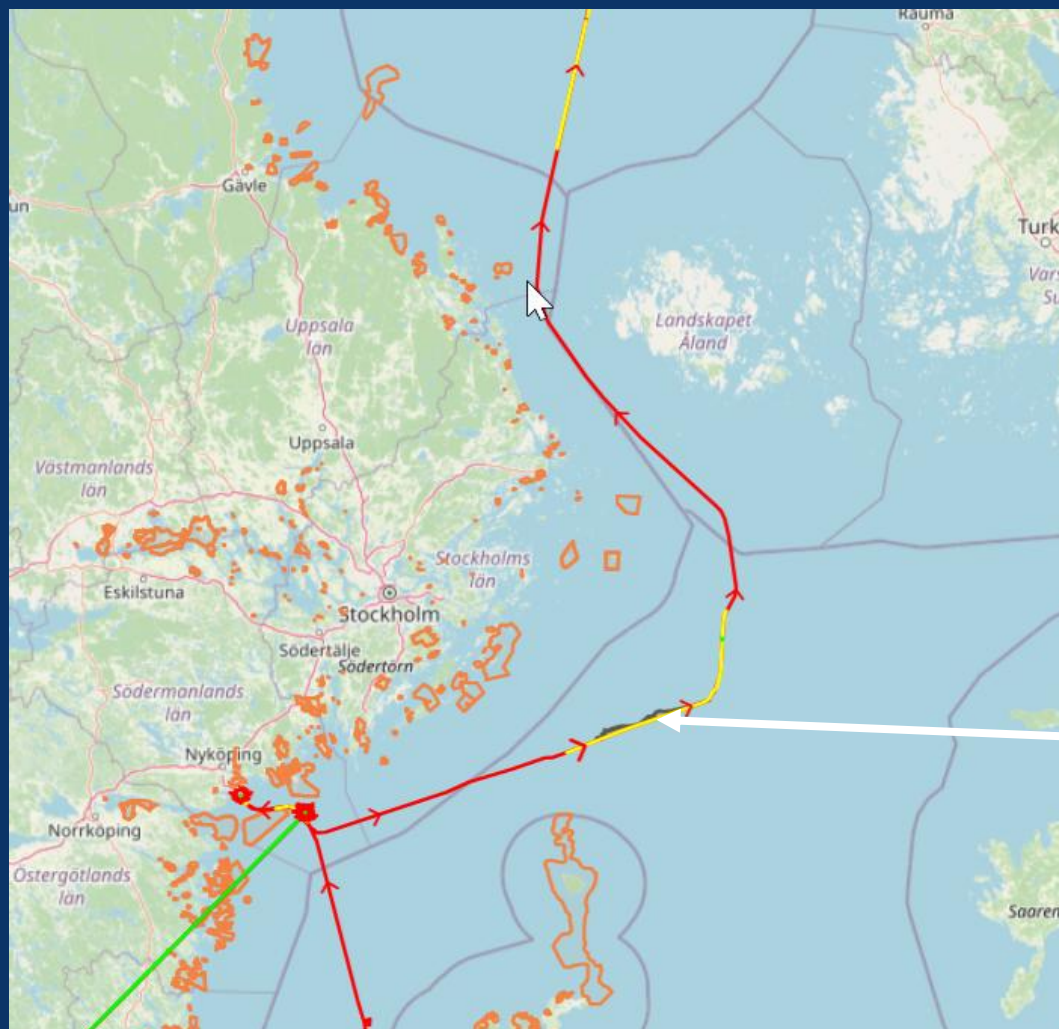
**Exampel of Tank Cleaning route  
through the Baltic Sea.  
*Tall Oil Crude residues***



y  
ration.  
km long

to  
xx





Tank cleaning residue  
A slick approx 90km long, 200  
meters width.  
Tall Oil Crude & Pitch



Red track = More than 8 knots  
Yellow track = 7-8 knots

# Questions/Discussions

**Erik Stålnacke**

Surveillance Officer  
Swedish Coastguard

Flight Division

Skavsta Airport

611 60 Nyköping

SWEDEN

Email: [erik.stalnacke@kustbevakningen.se](mailto:erik.stalnacke@kustbevakningen.se)



**KUSTBEVAKNINGEN**  
SWEDISH COAST GUARD