



porviva  
product  
CATALOG



# porviva PRODUCTS



**porfil.® primer (epoxi)**



**players. WB 800® top coats (PU)**



**porviva porbits® granules**



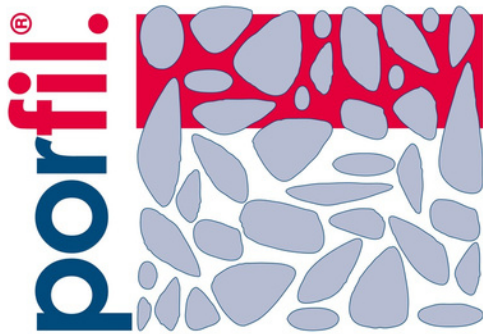
**porviva® special products**



[www.porviva.com](http://www.porviva.com)



## **porfil.® Technology & the porfil.® principle**



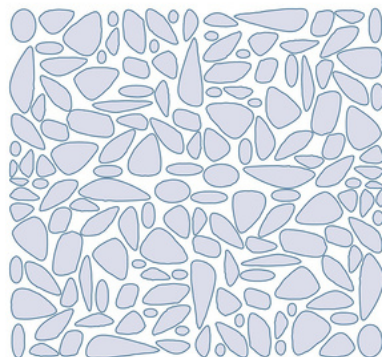
Mineral building materials consist of cement, water, additives and additional substances – in a varying quality and quantity.

The solidification of the building material starts in the course of the chemical reaction (hydration), and depending on the formulation, densification and other edge conditions (such as ambient temperature and humidity for example) concrete, screed and mortar of different quality and varying pore-sizes are produced. Even high density concretes have pores.

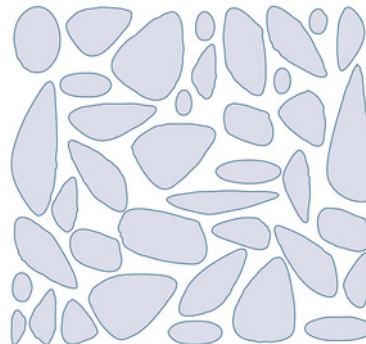
The more water, the more pores due to the elusion of exceeding water.

**porfil.® - the pore-filling, sealing and very low viscosity EP-water-proofing for the time optimization of covering and designing innovative porviva® surfaces.**

**Concrete pores**



**Screed pores**





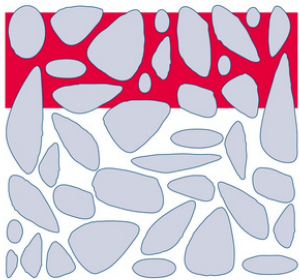
## porfil.<sup>®</sup> Technology (epoxi primer)

### porfil.<sup>®</sup> Characteristics

Traditional methods for sealing and protecting concrete, mortar, or screed often reach their limits. Insufficient protection, loss of adhesion, and early material failure are common issues — until now. The innovative **porfil.<sup>®</sup>** technology changes that. Its pore-filling formulation penetrates deep into the material, forming a durable barrier against moisture and pressurized water. Surfaces are not only sealed — they are strengthened from within.

With **porfil.<sup>®</sup>**, mechanical performance is significantly enhanced: higher abrasion resistance, improved adhesive strength, reduced deformation, and superior resistance to acids (up to pH > 4). The result? Long-lasting protection, reliable performance, and visibly better surfaces.

#### **porfil.<sup>®</sup> method:** **Pore-filling**

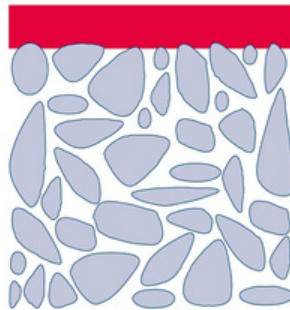


##### **Porefilling**

- high mechanical resistance
- curing of fresh (green) concrete
- no adhesion problems
- low material consumption

» outstanding protection

#### **Conventional method:** **Covering**

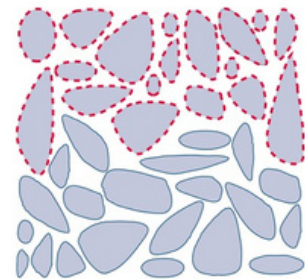


##### **Layer forming**

- direct mechanical exposure
- adhesion problems
- high application rate

» insufficient protection

#### **Conventional method:** **Impregnation**



##### **Covering of the pore-walls**

- open pores due to the evaporation of solvent or water
- non-permanent

» insufficient protection





## Substrate Preparation

**Before applying **porfil.®** products to absorbent substrates, a simple water drop test should be performed to check surface readiness.**

Place a small drop of water on the surface — it should spread and be absorbed into the material within 1–2 minutes. If the water remains on the surface without being absorbed, the substrate is too dense or contaminated, and additional surface preparation is required to ensure optimal penetration and performance of **porfil.®**.

Put on water  
drops and  
wait...



The waterdrops must penetrate the substrate within a short time and dry up damp, as shown in **picture no. 2**.



# porfil.<sup>®</sup> PLUS X (epoxi primer)

## porfil.<sup>®</sup> PLUS X – The Invisible Strength Beneath Every Surface

**porfil.<sup>®</sup> PLUS X** is a high-performance, transparent epoxy resin impregnation and barrier primer that protects concrete and screed surfaces from within. With its solvent-free low-viscosity, and long-lasting formula, it ensures outstanding surface strength, moisture protection, and durability for demanding design and industrial environments.

### Why **porfil.<sup>®</sup> PLUS X**?

- Enhances strength & durability – strengthens concrete and screeds, reducing shrinkage cracks.
- Seals & protects – creates a pore-filling barrier against rising moisture and pressurized water.
- Efficient & economical – low material consumption with maximum performance.
- Easy to maintain – smooth, hygienic, and simple to clean or repair.
- Versatile use – perfect as primer, impregnation, or epoxy **binder for porviva<sup>®</sup> design surfaces.**

### Where Performance Meets Design

Whether it's industrial flooring, commercial spaces, offices, residential interiors, or parking decks - **porfil.<sup>®</sup> PLUS X** provides the invisible foundation for beautiful, resilient, and long-lasting surfaces. Also ideal for water and leisure parks or any environment where durability meets design.



### Technical Highlights

- Mixing ratio: 100 parts A : 25 parts B (by weight)
- Consumption: approx. 0.1–0.4 kg/m<sup>2</sup>
- Pot life: approx. 30 minutes at 20 °C
- Curing time: tack-free after ~24 h at 20 °C
- Application temperature: 15–25 °C





**porfil.® ECO**  
(epoxi primer)



## **porfil.® ECO – Sustainable Strength Meets Superior Protection**

**porfil.® ECO** is a transparent, solvent-free, non-yellowing, and pressure-waterproof epoxy resin impregnation designed to protect and enhance concrete and screed surfaces. With its very low viscosity and deep pore penetration, it creates a durable, moisture-resistant seal — combining technical performance with environmental responsibility for sustainable, long-lasting surfaces.

### **Why porfil.® ECO?**

- Strong & sustainable – solvent-free, non-yellowing, and environmentally friendly formulation.
- Deeply effective – penetrates deeply into mineral substrates for enduring durability.
- Moisture protection – seals against rising damp and even pressurized water.
- Fast and efficient – low material consumption, short curing times, and easy application.
- Versatile design base – ideal as a primer, sealer, or binder for porviva® design surfaces.

### **Where Performance Meets Responsibility**

From industrial floors to offices, residential spaces, restaurants, and landscaping, **porfil.® ECO** provides robust protection and a refined appearance — perfect for projects where aesthetic quality and ecological awareness go hand in hand. Also suitable for airports, parking structures, and water or theme parks.

### **Technical Highlights**

- Mixing ratio: 100 parts A : 50 parts B (by weight)
- Consumption: approx. 0.1–0.25 kg/m<sup>2</sup>
- Pot life: approx. 10 min in container / 1.5 h on surface
- Curing time: tack-free after ~24 h at 20 °C
- Application temperature: 12–50 °C
- Viscosity: 50 mPa·s at 20 °C (very low viscosity)
- Color stability: Non-yellowing formulation





# porfil.<sup>®</sup> BASIC (epoxi primer)

## porfil.<sup>®</sup> BASIC – Essential Protection for Concrete and Screed

**porfil.<sup>®</sup> BASIC** is a transparent, solvent-free, two-component epoxy resin sealer with super-low viscosity and pressure-waterproof performance. It provides deep pore penetration, excellent sealing against backside moisture, and enhanced durability — ensuring long-term protection and perfect surface readiness for subsequent coatings or finishes.

### Why **porfil.<sup>®</sup> BASIC**?

- Reliable protection – seals concrete and screed against moisture and pressurized water.
- Deep-penetrating & long-lasting – fills pores and strengthens the substrate from within.
- Fast and efficient – quick readiness for covering with low material consumption.
- Versatile use – suitable as curing agent, primer, or epoxy mortar.
- Solvent-free & low-emission – environmentally responsible formulation for modern applications.

### Where **porfil.<sup>®</sup> BASIC** Performs Best

Ideal for industrial floors, commercial buildings, offices, residential spaces, and parking structures.

**porfil.<sup>®</sup> BASIC** delivers reliable moisture protection and lasting performance in both new construction and renovation projects — from airports to underground garages.



### Technical Highlights

- Mixing ratio: 100 parts A : 25 parts B (by weight)
- Consumption: approx. 0.10–0.25 kg/m<sup>2</sup>
- Pot life: approx. 30 minutes at 20 °C
- Curing time: tack-free after ~24 hours at 20 °C
- Application temperature: +8 °C to +50 °C
- Properties: solvent-free, low-emission
- Moisture-resistant, and durable





# porfil.® BASIC S & BIT (epoxi primer)



## porfil.® BASIC S (transparent) & BIT (red) Reliable Protection Beneath Every Bituminous Layer

porfil.® BASIS S (transparent) & BIT (red) is a high-performance, transparent or reddish 2-component epoxy resin impregnation designed for concrete protection beneath bituminous welded membranes — perfect for use on bridges and flat roofs. Its super-low viscosity and pressure-waterproof formulation ensure deep penetration, optimal sealing, and maximum adhesion without film formation — providing the ideal foundation for secure, long-lasting waterproofing systems.

### Why porfil.® BASIS S & BIT?

- Heat-resistant & durable – withstands welding of bituminous membranes without damage.
- Perfect adhesion – improves bonding strength and prevents osmotic blistering.
- Efficient & economical – low material consumption with high coverage rates.
- Non-film-forming & vapor-tight – prevents moisture ingress while maintaining substrate integrity.
- Easy to apply – simple, reliable processing even on large-scale projects.

### Where porfil.® BASIS S & BIT Performs Best

Developed for bridges, roofs, and flat roof structures, porfil.® BASIC S/ BIT provides superior protection for concrete and screed substrates in demanding environments. Its heat stability and long-lasting sealing performance make it an essential system component wherever bituminous sheeting is used.

### Technical Highlights

- Mixing ratio: 100 parts A : 25 parts B (by weight)
- Consumption: approx. 80–200 g/m<sup>2</sup> (first coat)  
50–150 g/m<sup>2</sup> (second coat)
- Pot life: approx. 30 min at 20 °C
- Curing time: tack-free after ~24 h at 20 °C
- Application temperature: 0–50 °C
- Key properties: Heat-resistant during welding  
non-film-forming, vapor-tight, no osmotic blistering







# players. WB 800® transparent top coat matt/ gloss (PU)

## players. WB800® transparent matt/ gloss The Perfect Finish for Durable (porviva®) Surfaces

**players. WB800®** is a water-based, solvent-free, two-component PU top coat, available in matt or gloss. It provides excellent UV stability, scratch resistance, and easy-to-clean protection for concrete, screed, and porviva® design surfaces — both indoors and outdoors. Thanks to its versatility, it can also be used in a highly diluted form as a maintenance treatment to refresh and preserve existing surfaces.

### Why players. WB800®?

- Long-lasting & UV-stable – protects against wear, yellowing, and weathering.
- Highly resistant – excellent abrasion, chemical, and plasticizer resistance.
- Easy to maintain – smooth, hygienic, and low-maintenance finish.
- Versatile use – ideal as a top coat for **porfil.® PLUS X**, **porfil.® ECO**, or **porviva®** systems.
- Eco-conscious – solvent-free, low-VOC formulation.

### Where players. WB800® Performs Best

Perfect for industrial and commercial floors, offices, residential areas, parking decks, and airports wherever a durable, elegant finish is required.

### Technical Highlights

- Finish: Transparent matt or gloss
- Mixing ratio: 125 parts A : 25 parts B (by weight))
- Consumption: approx. 0.2–0.3 kg/m<sup>2</sup> (two coats)
- Processing time: ~3 h at 20 °C
- Full cure: 7 days at 20 °C
- usable diluted for surface refreshing
- Properties: UV-stable, scratch-resistant solvent-free, easy to recoat





# players. WB 800® colored top coat color gloss (PU)



## players. WB800® color gloss – Durable Color, Cooling Effect & Dirt-Repellent Protection

**players. WB800® color gloss** is a water-based, solvent-free, two-component PU top coat with a brilliant glossy finish and an innovative cooling effect. It provides long-lasting color stability, excellent UV resistance, and superior scratch and wear protection for concrete, screed, and porviva® design surfaces - indoors and outdoors.

### Why players. WB800® color gloss?

- Cooling effect – reduces heat absorption on exposed surfaces, improving comfort and efficiency.
- Brilliant & durable – high color stability, UV and weather resistance.
- Highly resistant – excellent abrasion, chemical, and plasticizer resistance.
- Easy to maintain – smooth, hygienic surface that's simple to clean and refresh.
- Eco-friendly – water-based, solvent-free, and low-VOC formulation.

### Where players. WB800® color gloss Performs Best

Ideal for industrial and commercial floors, offices, residential areas, parking decks, and airports - wherever a durable, glossy, and temperature-regulating surface finish is required.

### Technical Highlights

- Finish: Glossy, pure white or custom colors
- Mixing ratio: 125 parts A : 25 parts B (by weight)
- Consumption: approx. 0.25–0.30 kg/m<sup>2</sup> (two coats)
- Processing time: ~3 h at 20 °C
- Full cure: 7 days at 20 °C
- Properties: Cooling effect, UV-stable scratch-resistant, solvent-free, dirt-repellent high color stability





# porviva porbits® granules SYNTHETIC

## porviva porbits® synthetic – Creative Surfaces with Cooling & Anti-Slip Performance

**porbits® synthetic** is a high-performance, UV-stable micro-tiling system for decorative and functional surfaces indoors and outdoors. The material combines durability, cooling effect, and durable anti-slip safety with endless design possibilities — ideal for architectural and design-focused environments..

### Why porbits® synthetic?

- Cooling effect – reduces surface heat, ideal for outdoor and sunny areas.
- Durable Anti-slip & robust – ensures safety and long-term resistance to wear.
- Highly durable – UV-stable, fire-resistant, and mechanically strong.
- Versatile design – available in porviva®, RAL, and NCS colors for endless creativity.
- Eco-conscious – solvent-free, low-emission, and LEED / DGNB certified.

### Where porbits® synthetic Performs Best

Perfect for industrial and commercial floors, offices, residential spaces, parking decks, water parks, and outdoor design areas — wherever aesthetic design meets technical performance.

### Technical Highlights

- Finish: matt or gloss
- Material: Acrylic-bound mineral granulate
- Colors: more than 220 colors (RAL or NCS)
- Grain sizes: XS, S, M
- Consumption: approx. 1.8 kg/m<sup>2</sup> (two coats)
- Properties: Cooling & anti-slip surface, UV-stable solvent-free, easy to clean, highly resistant scratch-resistant, solvent-free, easy to recoat

### The system consists of:

- **porfil.® PLUS X**
- **porbits synthetic®**
- **pleyers. WB 800® transparent matt/ gloss**





**porviva porbits®**  
**granules MINERAL**



## **porviva porbits® mineral – Natural Strength & Timeless Design**

**porbits® mineral** is a high-performance, UV-stable micro-tiling system made from renewable mineral materials. It offers a natural, anti-slip surface with exceptional durability and easy cleaning, ideal for both interior and exterior applications.

### **Why porbits® mineral?**

- Natural mineral surface – sustainable and elegant.
- Anti-slip & robust – ensures safety and long-lasting performance.
- UV-stable & weather-resistant – perfect for outdoor use.
- Easy to clean & repair – low maintenance and hygienic.
- Solvent-free & low emission – environmentally responsible formulation.

### **Where porbits® mineral Performs Best**

Ideal for commercial and residential spaces, offices, leisure facilities, landscaping and water or theme parks - wherever natural design meets technical excellence.

### **Technical Highlights**

- Finish: matt or gloss
- Material: Mineral granules (renewable raw material)
- Colors: more than 25 colors/ mixes
- Consumption: approx. 3.5–4.0 kg/m<sup>2</sup> (two coats)
- Grain sizes: S, M, L
- Properties: UV-stable, anti-slip, solvent-free  
sustainable, easy to clean

### **The system consists of:**

- **porfil.® PLUS X**
- **porfil.® ECO white**
- **porbits mineral®**
- **players. WB 800® transparent matt/ gloss**





# porviva porbits® granules PORPEBBLE

## porviva porbits® porpebble – Natural Look, Strong Performance

**porbits® porpebble** is a UV-stable, anti-slip micro-tiling system with a natural stone look and excellent durability. It combines scratch resistance, weather stability, and easy cleaning for high-performance design surfaces for pools & water features (indoors and outdoors).

### Why porbits® porpebble?

- Natural design – elegant, modern stone appearance.
- Anti-slip & durable – ideal for safety and long-term use.
- UV-stable & weather-resistant – perfect for outdoor applications.
- Easy to clean & repair – low-maintenance, hygienic surface.
- Eco-conscious – solvent-free, low-emission, made from renewable raw materials.

### Where porbits® porpebble Performs Best

Perfect for commercial and residential pools, leisure and water parks, and outdoor surfaces — wherever natural aesthetics meet technical durability.



### Technical Highlights

- Finish: matt or gloss
- Material: Mineral granules (renewable raw material)
- Colors: blue, green (color gradient possible)
- Grain sizes: S, M
- Consumption: approx. 3.5–4.0 kg/m<sup>2</sup> (two coats)
- Properties: Anti-slip, UV-stable, solvent-free  
easy to clean, renewable raw material

### The system consists of:

- **porfil.® PLUS X**
- **porfil.® ECO white**
- **porbits porpebble®**
- **pleyers. WB 800® transparent matt/ gloss**







**porviva porbits®**  
**granules MINERAL MICA**



## **porviva porbits® mineral mica – Elegant Metallic Brilliance**

**porbits® mineral mica** combines natural minerals with shimmering metallic effects in silver or gold, creating durable, UV-stable, and anti-slip surfaces. It offers a luxurious, scratch-resistant finish that's both easy to clean and long-lasting — ideal for sophisticated interior and exterior designs.

### **Why porbits® mineral mica?**

- Natural mineral surface – sustainable and elegant.
- Anti-slip & robust – ensures safety and long-lasting performance.
- UV-stable & weather-resistant – perfect for outdoor use.
- Easy to clean & repair – low maintenance and hygienic.
- Solvent-free & low emission – environmentally responsible formulation.

### **Where porbits® mineral mica Performs Best**

Ideal for commercial and residential spaces, offices, leisure facilities, landscaping and water or theme parks — wherever natural design meets technical excellence.

### **Technical Highlights**

- Finish: matt or gloss
- Material: Mineral granules (renewable raw material)
- Colors: silver, gold
- Consumption: approx. 1.0–1.5 kg/m<sup>2</sup> (two coats)
- Grain sizes: S, M
- Properties: UV-stable, anti-slip, solvent-free  
sustainable, easy to clean

### **The system consists of:**

- **porfil.® ECO**
- **porbits mineral mica®**
- **players. WB 800® transparent matt/ gloss**





# porviva porbits® granules METALL SPATOLA

## porviva players. porbits® metall spatola – Metallic Power & Timeless Elegance

**porbits® metall spatola** is a high-performance, UV-stable, and anti-slip micro-tiling system that transforms mineral surfaces into seamless metallic masterpieces. Its fine spatula-applied texture creates a unique handcrafted appearance, uniting technical strength with refined design — ideal for sophisticated architecture and interior concepts.

### Why porbits® metall spatola?

- Handcrafted elegance – a smooth metallic surface with artisanal depth and character.
- Durable & resilient – highly resistant to abrasion, scratches, and wear.
- UV-stable & weatherproof – suitable for both interior and exterior use.
- Easy to clean & maintain – simple care with long-lasting visual brilliance.
- Eco-friendly – solvent-free, low-emission, and based on renewable raw materials.

### Where porbits® metall spatola Performs Best

From commercial spaces and offices to exclusive residences and public areas, **porbits® metall spatola** offers aesthetic sophistication and technical reliability in one material. With its versatile application method, architects and designers can realize individual creative concepts integrating logos, geometric structures or artistic motifs directly into the surface — making each project a unique statement piece.



### Technical Highlights

- Finish: matt or gloss
- Material: aluminium, copper, brass, bronze
- Colors: silver (real metals)
- Grain sizes: XS
- Consumption: approx. 1.5–2.5 kg/m<sup>2</sup> (one coat)
- Properties: Anti-slip, UV-stable, solvent-free  
easy to clean, renewable raw material

### The system consists of:

- **porfil.® ECO**
- **porbits metal spatola®**
- **players. WB 800® transparent matt/ gloss**





**porviva porbits®**  
**granules METALL**



## **porviva porbits® metall – Metallic Elegance with Lasting Strength**

**porbits® metall** is a high-performance, UV-stable, and anti-slip micro-tiling system that combines the refined aesthetics of real metal with exceptional durability and technical performance. Available in stainless steel, chrome steel (magnetic), and aluminum, this innovative surface solution brings a modern, industrial-inspired elegance to both interior and exterior designs.

### **Why porbits® metall?**

- Authentic metallic finishes – sophisticated surfaces with the visual depth & brilliance of real metal.
- Durable & resistant – outstanding scratch, abrasion + chemical resistance for long-lasting quality.
- Anti-slip protection – ensures safety and comfort on functional and design-oriented surfaces.
- Easy maintenance – smooth, hygienic, and simple to clean for long-term use.
- Eco-friendly – solvent-free, low-emission formulation made from renewable raw materials.

### **Where porbits® metall Performs Best**

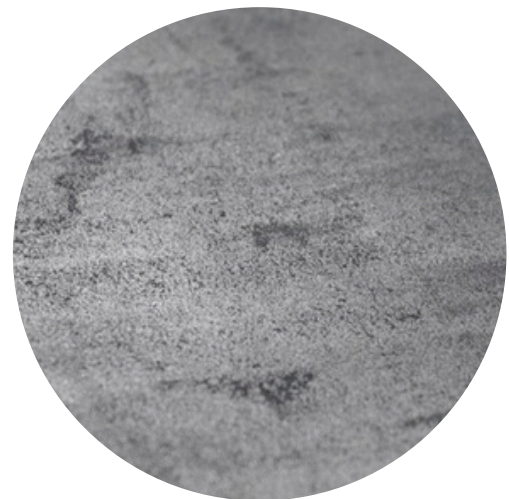
Whether in commercial buildings, offices, residential interiors, or public spaces, **porbits® metall** delivers a unique metallic appearance that blends modern design, robust functionality, and architectural versatility.

### **Technical Highlights**

- Finish: matt or gloss
- Material: aluminium, stainless steel, chrome steel
- Colors: silver (real metals)
- Grain sizes: S
- Consumption: approx. 3.5–4.0 kg/m<sup>2</sup> (two coats)
- Properties: Anti-slip, UV-stable, solvent-free  
easy to clean, renewable raw material

### **The system consists of:**

- **porfil.® ECO**
- **porbits metal®**
- **pleyers. WB 800® transparent matt/ gloss**





**porviva porstars®**  
**GLITTER**

## **porviva porstars® glitter – Decorative Glitter for Brilliant Effects**

**porviva® porstars** is a decorative glitter additive for creating sparkling visual highlights on coatings, sealers, and design surfaces. Made from polyurethane-coated PET foil with aluminum vaporization, it delivers brilliant reflection, long-lasting color stability, and excellent resistance under demanding conditions.

### **Why porviva® porstars?**

- Brilliant shine – adds dynamic, light-reflecting metallic sparkle.
- Durable & UV-stable – long-lasting brilliance with strong color fastness.
- Versatile application – suitable for paints, coatings, and decorative surfaces.
- Heat and chemical resistant – withstands up to 230 °C and solvents like MEK or isopropanol.
- Available colors: sand, silver, gold, gunmetal (dark grey).

### **Where porviva® porstars Performs Best**

Whether in commercial buildings, offices, residential interiors, or public spaces, **porviva® porstars** delivers a unique shiny appearance that blends modern design, robust functionality, and architectural versatility.



### **Technical Highlights**

- Finish: gloss
- Material: Polyethylene
- Colors: sand, silver, gold, gunmetal (dark grey)
- Grain sizes: XS
- Consumption: approx. 0.05 kg/m<sup>2</sup> (one coat)
- Properties: UV-stable, easy to clean

### **The system consists of:**

- **porstars® Glitter**
- **players. WB 800® transparent matt/ gloss / color**



[www.porviva.com](http://www.porviva.com)





**porviva®** MAGIC CARPET  
all porviva® surfaces



## porviva Magic Carpet – Design Surfaces Reinvented

Experience the innovation of **porviva® Magic Carpet** – the new generation of ready-to-install, design-driven flooring. All **porviva®** surfaces are now available as Magic Carpet, combining the aesthetic elegance and technical performance of **porviva®** materials with the comfort and flexibility of a modular carpet system. Each Magic Carpet brings the unique texture, color depth, and surface brilliance of the original **porviva®** finishes into a soft, tactile format, offering easy installation and endless design possibilities. Whether bold and expressive or subtle and refined – Magic Carpet turns every surface into a statement of design innovation. At just **4–5 mm thick (appr. 0,16-0,19 inches)**, **porviva® Magic Carpet** offers a refined profile without compromising on comfort or functionality.

### Where porviva® Magic Carpet Performs Best

perfect for offices, hotels, retail spaces, and residential interiors, water- & leisure parks the **porviva® Magic Carpet** collection delivers durability, sustainability, and distinctive style in one product.

### Technical Highlights

- Finish: matt or gloss
- Material: all porviva surfaces - colors, stamps, pattern, Designs, 3D-Textures
- Properties: Anti-slip, UV-stable, solvent-free, easy to clean easy to fix, quick installation, cooling effect (synthetic)
- System thickness only 4–5 mm (appr. 0,16-0,19 inches)



### The system consists of:

- **porviva® magic carpet & OTTO glue**





# porviva gmbh

Adamsmuehle 1  
52146 Wuerselen  
Germany

fon: +49 (2407) 568 3030  
[www.porviva.com](http://www.porviva.com)  
[office@porviva.com](mailto:office@porviva.com)



[www.porviva.com](http://www.porviva.com)

version 24.10.25