

HPL WORKTOP CATALOGUE

JYH MING SDN BHD



Your dream.

From design to installation plus all the finishing touches, we have everything you need to create your new kitchen.



**Your ideas.
Our know-how.**

Bring your ideas to life with
our experienced Design
Consultants.



**Your style.
Our range.**

Find the look you love.
We have choices to
suit you and your home.



**Your budget.
Our promise.**

Get a clear, itemised quote
plus flexible payment
options.

Our experts.



**Your home.
Our guarantee.**

Feel confident.
Our Kitchens are built
with a professional installers



**Your trust.
Our installers.**

Enjoy peace of mind.
Our local, trusted installers
can take care of everything.



**Your completed project.
Our finishing touches.**

Personalise your kitchen
with our lighting, flooring,
tiles, paint and more.

WHO WE ARE

Jyh Ming Sdn Bhd is an established company based in Kuantan, Pahang **since 2003**, specializing in ONE-STOP renovation and construction combined with interior design for all **residential** and **commercial spaces**.

We are experts in all types of interior design, partition work, interior and exterior renovation and other construction works such as tiling, plaster ceiling design, plumbing, electrical, carpentry, etc.

We have professionals who perform proper quality control throughout the process. We make your dreams come true.



www.jyhming.com.my



Jyh Ming Sdn Bhd



[jyhming_official](#)



[JyhMingSdnBhd](#)

Showroom

SCAN ME

Jyh Ming Sdn Bhd

A-7974, Jalan Beserah,
25300 Kuantan,
Pahang Darul Makmur.



E jyhming@jyhming.com
T 09-566 6699
012-983 7577

Factory

SCAN ME

Jyh Ming Sdn Bhd

No.30, Jalan IM 14/1,
Kawasan Perindustrian IM,
25200 Kuantan,
Pahang Darul Makmur.





KITCHEN WORKTOP

Exclusive high pressure laminate worktop which is designed to t your home and living comfort. With the extraordinary prole and contour that is natural, it is the ideal durable element which features style, substance and quality.

WOODGRAINS SERIES





MM 371
GESSO LINI



MM 372
ARTISAN OAK



MM 375
SOFT WOODLINE



MM 377
CINDE SAWCUT



MM 376
NICE OAK

MARBLE SERIES





MM 275
DESIDERIA MARBLE



MM 276
CATALINA MARBLE



MM 277
BERNINI MARBLE

SOLID SERIES



size: 600mm W x 3660mm L x 18/36mm THK



MM 101
POLAR WHITE



MM 102
EBONY BLACK



STONE SERIES





MM 262
IRON STONE



MM 264
SMOKEY QUARTZ



MM 265
PHANTOM QUARTZ



MM 266
SOMERSTONE



MM 268
FRENCH STONE



MM 270
ANDO CEMENT



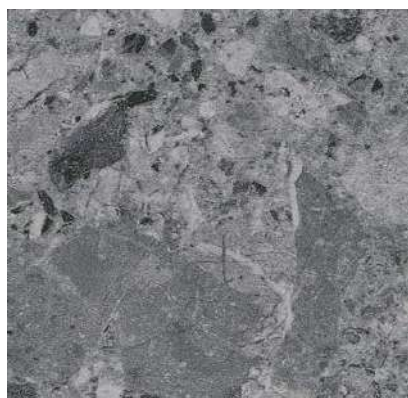
MM 273
CARRARA



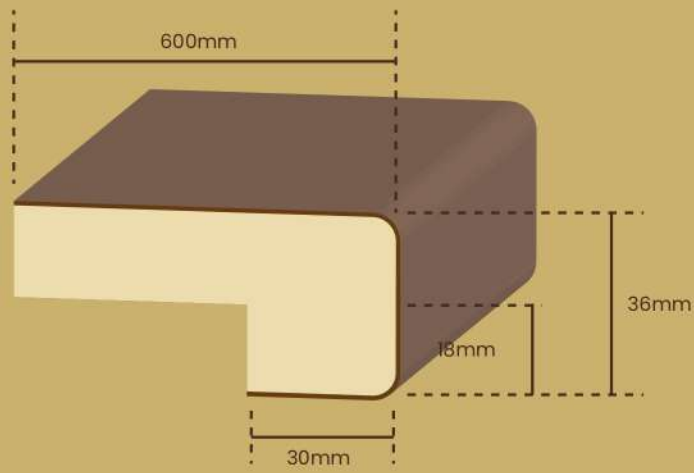
MM 278
TIVOLI CEPPO



MM 279
ROMAN CEPPO



MM 280
VESUVIUS CEPPO



CUSTOM MADE POSTFORMING PROFILE



Double Radius



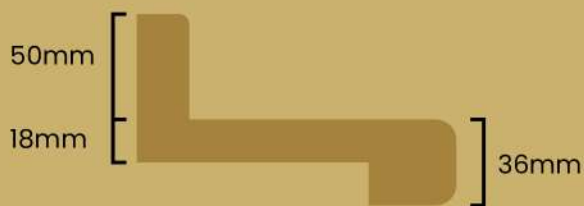
Bull Nose



Double Radius - Both Sides



Bull Nose - Both Sides



Double Radius with Backsplash



25mm Bevel Edge



Bevel Edge - 1



Bevel Edge - 2



**18mm Bevel Door Panel with
1 Side Postform**



**18mm Door Panel with
Both Sides Postform**

TECHNICAL SPECIFICATIONS

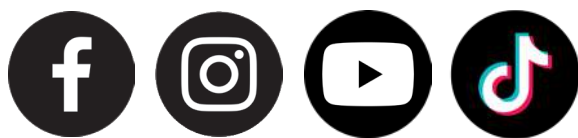
PHYSICAL PROPERTY	TEST METHOD	UNIT	TEST RESULT (HPL 0.7mm)
Gross Density	DIN 53479	Kg/m ³	1400
Thickness Tolerance	DIN 16926	Mm	±0.05
Thickness Swelling (24 hours at 20 ± 1°C)	EN 317	%	3.8
Flexural Strength	BS 2782	N/mm ²	>90
Tensile Strength – Machining Direction – Cross Direction	BS 2782	N/mm ²	>90 >80
Resistance to Surface Wear (Taber Abrasion Test)	EN 438-2	Cycles	>500
Resistance to Impact	EN 438-2	N	>40
Resistance to Scratching	EN 438-2	N	>4
Resistance to Colour Change in Xenon Arc Light	EN 438-2	–	>Blue Wool Standard No. 6
Resistance to Cracking (Thin Laminates)	EN 438-2	–	Unchanged. No Hairlines cracks.
Resistance to Immersion in Boiling Water (100°C for 2 hours) Increase in Weight Increase in Thickness	EN 438-2	%	5.8 4.1
Resistance to Dry Heat (180°C)	EN 438-2	–	No visible change
Resistance to Cigarette – ‘Lucky Strike’ Brand – ‘Camel’ Brand – ‘Marlboro’ Brand	EN 438-2	–	Slight change of gloss & colour, only at certain viewing angles
Resistance to Steam (1 hour)	EN 438-2	–	No visible change
Co-efficient to Thermal Conduction	DIN 52612	W/mK	0.3
Surface Hardness – Micro – Vickers	Determined using Mitutoyo MVK-G1 Hardness tester With 100gf load	–	65

Legend : N – Newton, K – Kelvin (273 ± temp. in °C), W – Watt, IN/mm² ~ IMPa ~ 10kp/cm²
 #Rating Scale (Blue Wool Standard no. 6): >6, 6 and <6





For more ideas, inspiration and to stay up to date on our latest kitchen offers, follow us on Facebook, Instagram, Youtube and Facebook.



Visit www.jyhming.com.my

Get in touch