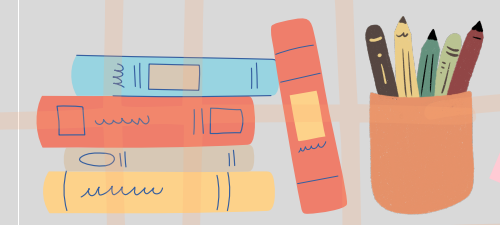


Week 3 - Alphabet Knowledge: Letter Recognition



Days	Monday	Tuesday	Wednesday	Thursday	Friday
Lesson for the day	Letters in Our Names	Uppercase & Lowercase Match	Alphabet Sorting	Letters in Environmental Print	Alphabet Mystery Bag
Learning Objective	Children Identify letters from their own names and classmates' names.	Children match uppercase and lowercase letters.	Children sort letters by shape, curves, and lines.	Children find letters in familiar signs and labels.	Children identify letters through touch and visual recognition.
Materials	Name cards, alphabet chart.	Letter cards (uppercase and lowercase).	Letter manipulative's or cards.	Photos of signs, labels, classroom print.	Mystery Bag, letter manipulative's.
Step-by-Step Directions	Show children their name cards. Point to each letter and say its name. Invite children to find matching letters on an alphabet chart. Repeat with classmates' names.	Place uppercase cards on the table. Give children lowercase cards. Invite them to find the matching uppercase letter. Celebrate matches and repeat.	Show a few letters and discuss their shapes. Invite children to sort letters into groups (curvy, straight, both). Review each group together. Repeat with new letters.	Show photos or point to print around the room. Invite children to find specific letters. Discuss where the letter's appear. Create a class chart of found letters.	Place letters in a bag. Invite a child to feel a letter without looking. Ask them to guess the letter and then reveal it. Match it to the alphabet chart.
Teacher Language Prompts	"This letter is in your name. Can you find it again?"	"These two letters look different but represent the same sound."	"What do you notice about this letter's shape?"	"You found the letter M in this sign!"	"What letter do you think it is?"
Adaptations for Diverse Learners	Use picture cues; shorten names for beginners.	Reduce the number of letters; use color coding.	Provide fewer letters; use tactile letters.	Use picture-supported print; limit the number of letters.	Use larger letters; allow visual support.