

# Office of Developmental Programs Updates

April 2026





# ODP Updates

- Executive Orders
- Performance-Based Contracting (PBC)
- Multi-Year Program Growth Strategy (MYPGS)
- CPS Workgroup
- 1 person homes
- Program Integrity

# Expanding Protections for People with Disabilities

- [Governor Shapiro recently signed three executive orders:](#)
- **Protecting the Rights, Dignity, and Privacy of People with Disabilities:** reaffirms the Commonwealth's longstanding nondiscrimination commitment and ensures data collection by Commonwealth agencies is limited to the minimum data necessary and proper processes are followed.
- **Creating the Governor's Advisory Commission on People with Disabilities:** commissioners will recommend policy changes across the disabilities spectrum, engage with federal/state/local agencies, communicate Administration initiatives to the public, and compile information on programs, funding, and additional supports to create an inclusive resource for individuals with disabilities and their family members across Pennsylvania
- **Updating the Developmental Disabilities Council:** the Council will advise the Governor on all matters affecting individuals with developmental disabilities in Pennsylvania, and advocate for improved independence, productivity, and community inclusion. The Council will continue to develop and implement a statewide plan and advocate for systemic change across the Commonwealth.



# Supports Coordination Organization Pay- for-Performance (P4P)

## Milestone 1: Capacity Building

- Credentialing (\$3.835M available)
  - SCOs that submitted: 44
  - SCOs that passed: 35
  - Payments: \$1.76M
- Technology (\$3.835M available)
  - SCOs that submitted: 35
  - SCOs that passed: 30
  - Payments: \$1.84M

## Milestone 2: Scaling

Achieve at least 1 of the 4 targets

- Increase supported employment service and CIE
- Increase in % individuals using Supported Living, Lifesharing or Housing Services
- Increase in % individuals with non-residential
- Increase in remote supports or assistive technology



# PBC Updates: Residential

Status at Closure of MyPBC Portal for Residential Provider Submissions

Metric	Value	Total	Percentage	Notes
Users Log-In (All Time)	625	1075	58%	
RS Orgs Log-In (All Time)	421	433	97%	
RS Form Started	410	433	94.7%	
RS Form Submitted	409	433	94.5%	24 providers did not submit for evaluation
<i>Primary</i>	<i>317</i>		<i>77.5%</i>	
<i>Select</i>	<i>58</i>		<i>14.2%</i>	
<i>Clinically Enhanced (Med, DD, Both)</i>	<i>34</i>		<i>8.3%</i>	



## PBC Updates: Residential P4P Milestone 2

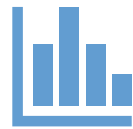
Credentialing	Technology	CIE
<ul style="list-style-type: none"><li>• <b>166</b> providers submitted</li><li>• <b>110</b> passed initial review</li><li>• 25 out of 56 providers that failed submitted resolution. <b>24</b> passed during resolution</li><li>• <b>134</b> total passed</li><li>• Payments: \$11.5M</li></ul>	<ul style="list-style-type: none"><li>• <b>121</b> providers submitted</li><li>• <b>20</b> passed initial review</li><li>• 62 out of 101 providers that failed submitted resolution. <b>59</b> passed during resolution</li><li>• <b>79</b> total passed</li><li>• Payments: \$1.67M</li></ul>	<ul style="list-style-type: none"><li>• <b>109</b> providers submitted</li><li>• <b>15</b> passed initial review</li><li>• 9 out of 94 that failed submitted for resolution</li><li>• Resolution scoring in progress</li><li>• <b>16</b> total passed</li><li>• Approx Expenditure: \$255K</li></ul>



# PBC: Next Up



**Residential P4P for  
FY26-27  
announcement**



**Data analysis:  
trending,  
benchmarking from  
SCO and Residential  
provider submissions**



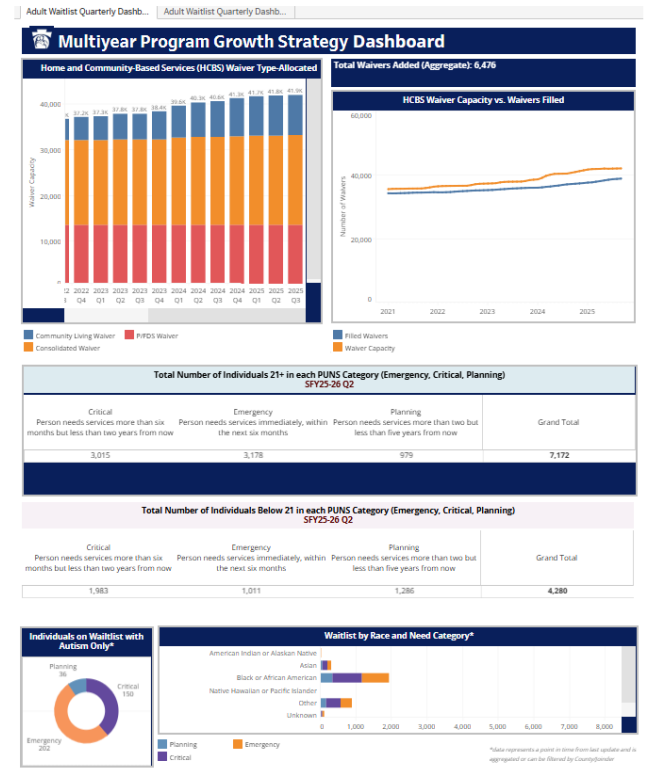
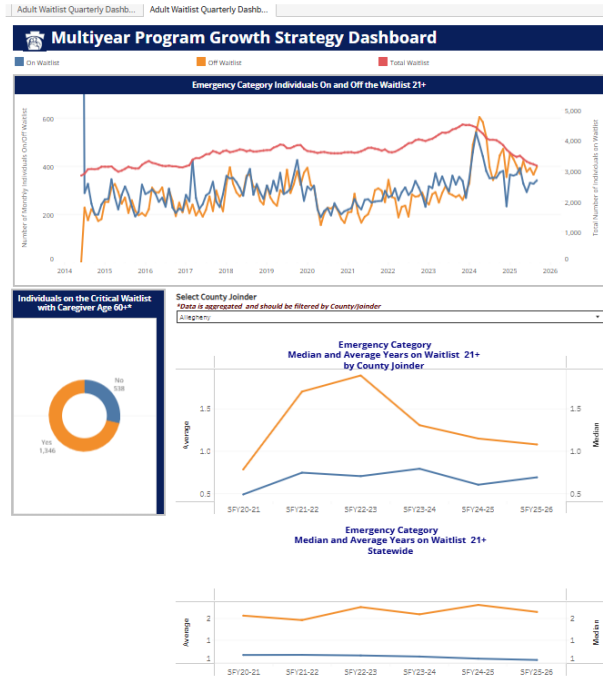
**SCO New Rate  
Structure  
Implementation**



**Publish FY27-28  
Performance  
Measures**

# Multi-Year Program Growth Strategy (MYPGS)

# MYPGS Dashboard Live on MyODP



# Q-BACA



## ODPANN 26-025 Multi-Year Program Growth Strategy Quarterly Budget And Capacity Adjustment Request

The Office of Developmental Programs (ODP) requests your assistance sharing the attached communication, *ODPANN 26-025 Multi-Year Program Growth Strategy Quarterly Budget and Capacity Adjustment Request*. The purpose of this announcement is to notify AEs of budget updates in the AE Dashboard and to provide the link for submission of fiscal year (FY) 25/26 second quarter budget and capacity adjustment requests. Requests must be submitted by March 6, 2026.

Please review the announcement for more details.

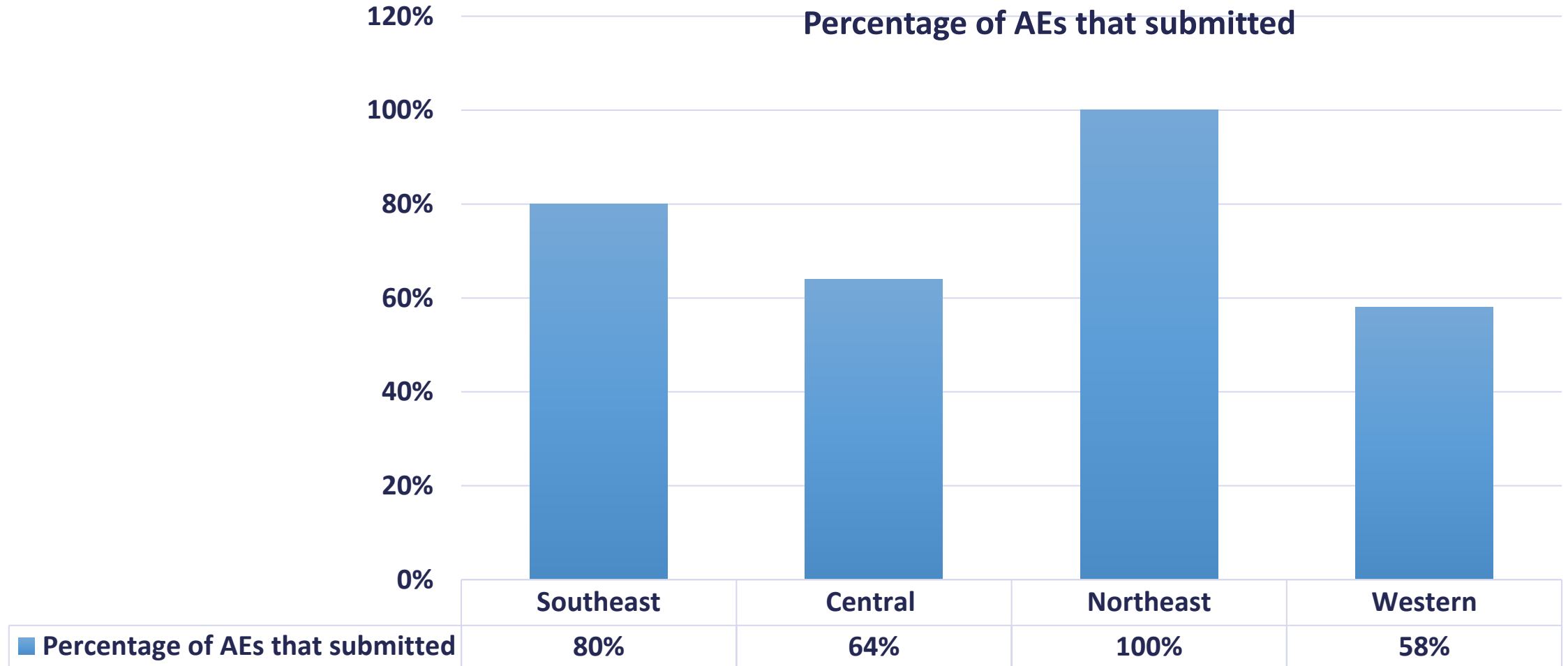
Attachment 1:



[ODPANN 26-025 Multi-Year Program Growth Strategy Quarterly Budget and Capacity Adjustment Request](#)

Attachment 2:  [Multi Year Growth Strategy Quarterly Request Calculation Tool](#)

# FY 25/26 Second Quarter



## FY 25/26 Second Quarter Approved Capacity

	Consolidated	Community Living
Southeast	16	31
Central	51	28
Northeast	56	34
Western	34	33
Total	157	126



## **MYPGS: Next Up**

ISP Review and Service Authorization protocol training

Utilization Protocol training

Enrollment tracking

In-Person AE Session



# Adult Autism Waiver (AAW) Updates

- AAW Renewal 7/1/2026
- Public comment January-February
- Interest list conversion to waiting list completed
  - Currently 424 individuals waiting
- 25 additional capacity released in 3/2026



## CPS Workgroup

- Concluded information gathering, planning, and discussion meetings
- Reviewed draft recommendations 4/6/26.
- ISAC will be presented with draft recommendations for discussion June 2026



# CPS Workgroup Recommendation Themes

1. Simplify Service Delivery Expectations and Billing
2. Improve Clinical Support to Ensure People with Complex Needs Access
3. Clarify Expectations for Skill Building
4. Leverage and Implement Technology in Service Delivery
5. Update Licensing Regulations to Address Current Needs and Service Models



# Reduction in 1 Person Homes

- Concluded information gathering through multiple formal stakeholder discussion groups
- Development of residential habilitation criteria
  - 1 person homes guidance and protocols for review
- Continued discussion with AEs
  - Priority review areas (30% of individuals 50+ years old; more than 80 individuals over age 60 living in 1 person homes for 2 or more years)
- Stakeholder input prior to publication