



Growing Resilient Wildlife Communities

ANNUAL REPORT

2021 - 2021



2021 has been a very interesting year getting my head around Nourish as a new Program Director. I have spent a lot of time meeting each staff member individually and seeing their perspective of the Nourish vision as well as on building a lot of new projects and processes into operations. We have achieved a lot this year, even if internally it has felt slow and undefined. We have made a lot of decisions around who we are and who we want to work with in terms of branding, and identity, including the new logo focusing on Resilience. The Nourish vision truly is to connect communities to conservation and to grow resilience in wildlife communities. Crystalizing an identity and sharing and growing this with the team has been a key focus for 2021.

We have made some hard decisions around ending partnerships with NGO's who do not share our community ethics, but also created a bright new direction for Nourish that we are proud of and want to keep working towards.

During 2021 I completed a Leadership in Conservation course online with Benneth (Community Liason), we engaged with training sessions for our creche staff members, we sent our Green Kidz staff for Scouts training and we have restarted our Yes 4 Youth (Y4Y) team intake for learnerships and job shadowing. This is all focused around building capacity and expanding our offering to the local community through opportunities and mentorship.

Overall the year was positive and spent rebuilding capacity, team spirit, and ethos post-Covid-19 - *Johann Nortje, Nourish Program Director.*

NOTE FROM NEW PROGRAM DIRECTOR



“Our greatest glory is not in never falling, but in rising every time we fall.”

— Confucius



“

*We grow resilient wildlife communities
through engagement in conservation & sustainable
development.*

*We have a programming structure of beneficiation,
education, enterprise and tourism that we deliver through
an Eco-Village model.*

”

THE NOURISH ECO VILLAGE



“Place of Ubuntu”



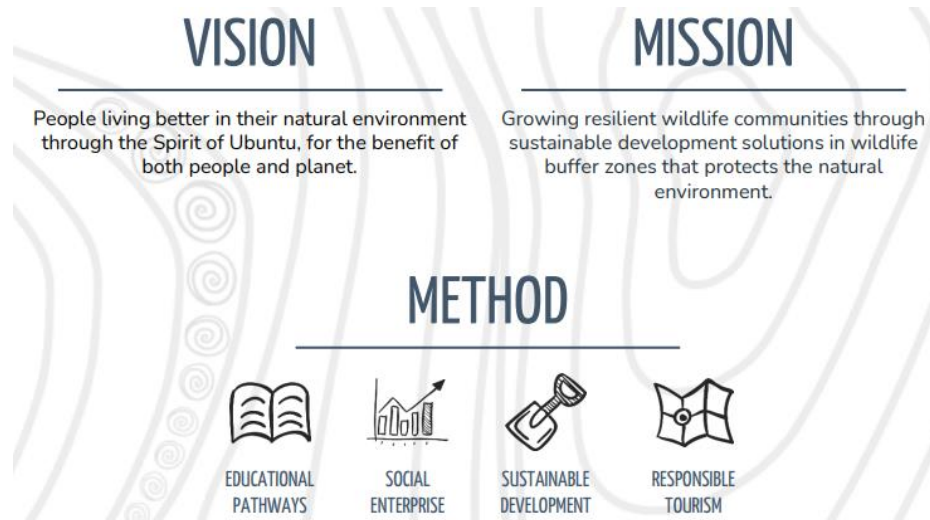
Growing Resilient Wildlife Communities

BACKGROUND



Started in 2011, Nourish was created as a platform **linking conservation with community issues and ideals**, finding integrated sustainable solutions to issues plaguing conservation such as poverty, low levels of education, food insecurity, and unemployment. Through a series of grassroots, community-led interventions we have walked the talk over the last decade, in order to establish what works in a wildlife community landscape. Projects and programming that will be impactful, needed, and ultimately make a **long-term sustainable impact**.

We have rolled all our learnings of intercultural and intergenerational experience into what we now consider a solid **replicable community development 'model'**. Solutions to break the poverty cycle and create healthy resilient communities, are ultimately those that link individuals and communities back to their wildlife heritage.





Growing Resilient Wildlife Communities

OUR ETHOS



BRANDING

As Nourish NPO, we have gone through a rebrand. This not only aligns with the refresh in the work we do, but also aligns with the new direction we wish to take on as Nourish. The process has been extremely drawn out and possibly more difficult than we imagined, due to external consultants, but also our own decision about the future we want for Nourish.



DIRECTION

As a new direction we have consolidated into three categories of operation: **Nourish Foundation, Nourish Eco Village and Nourish Social Enterprise.** The Foundation aimed at admin and management, the Eco Village being delivery, and the Social Enterprise focusing on income generation. Our aim here is to create a system for growth and replication, and therefore resolve our income model to become self-sustainable and less reliant on fundraising, especially at the lower end of the scale. Less charity, more development.

NOURISH FOUNDATION PILLARS

Finding markers to evaluate and define our programming



RESILIENCE

- Youth focused poverty and inequality
- Climate change resilience according to water food and disasters
- Social impact of health related issues

CONSERVATION

- Natural resource use, including food production
- Human environmental damage including protecting biodiversity
- Climate change - Pollution, recycling and waste management

SUSTAINABILITY

- Supply chains and ecological footprint of products
- Renewable energy and green/eco infrastructure
- Disruption in rural tech access

INTERNATIONAL ALIGNMENT

Using the SDGs and WWF South Africa directions to create our own markers by which we align ourselves as part of a local and global community.

This will create opportunity for us to pull on resources and manage, govern and measure our own progress.

The Nourish Eco Village

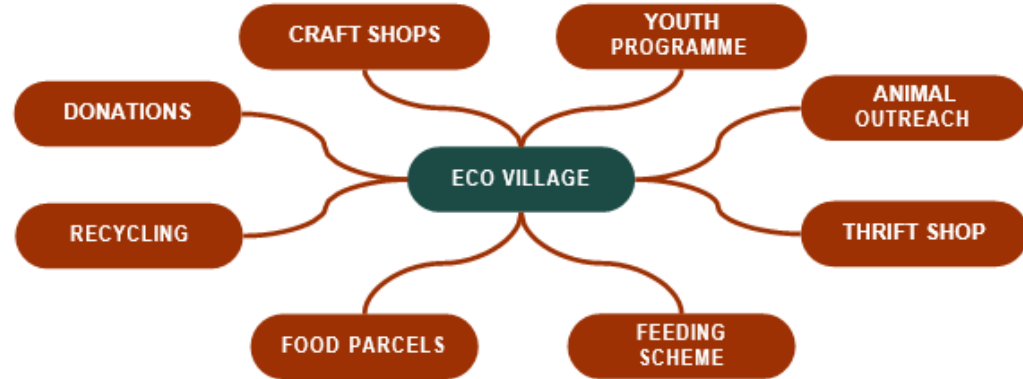
BUILDING STRONG COMMUNITY RELATIONSHIPS

The Eco Village is not just the delivery platform for the programming but is also a vehicle where we add beneficial smaller scale projects into the community in order to **maintain and build a solid foundation with each community** we work in. This outreach work is based on a robust community-specific needs assessment and greatly expands the footprint and impact from the Hub into the surrounding communities. Projects include sanitary pads distributed for young women, school uniform support programs, recycling projects and community clean up days and soccer tournaments!

The Eco Village is also a neutral interface between community and reserves to communicate, discuss and roll out initiatives that affect both parties.

A place where people can come together.

“ Place of Ubuntu ”





Growing Resilient Wildlife Communities

PROGRAMMING

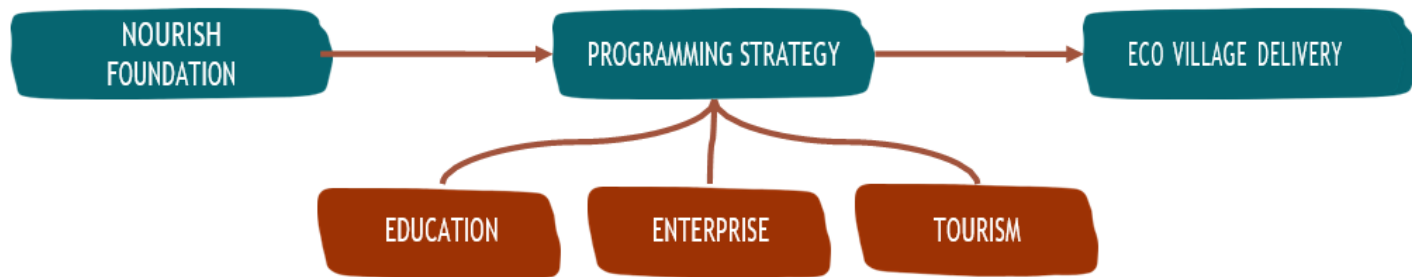
EDUCATION - ENTERPRISE - TOURISM



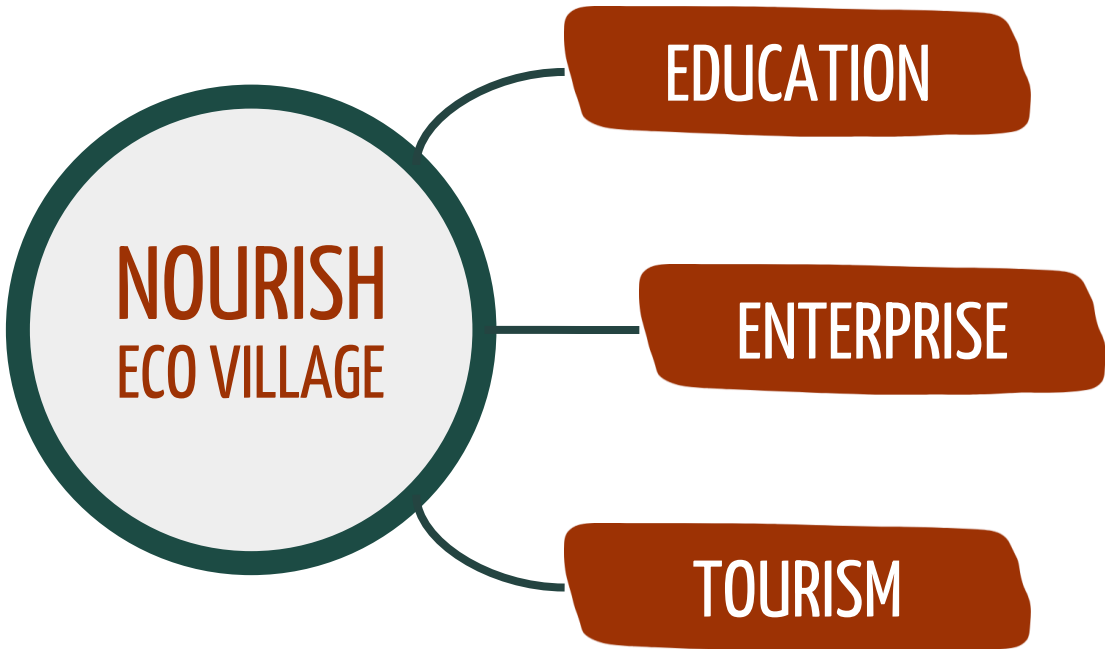
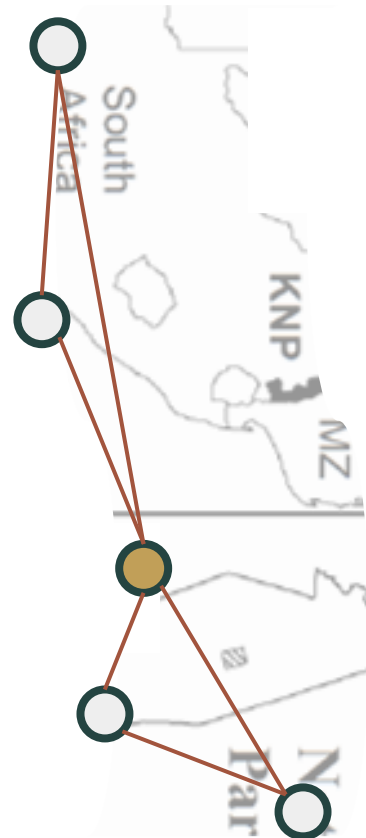
Connecting Communities to Conservation

We grow resilient wildlife communities
through engagement in conservation & sustainable development.

We have a programming structure of **beneficiation, education, enterprise and tourism** that we deliver through an Eco-Village model.



NOURISH ECO VILLAGE PROGRAMMING



Education



ECD OUTREACH

Supporting surrounding
Creche's with ECD training and
resources

CRECHE

Play-based learning
subsidised creche

Goal: To grow children that have developed emotional, social, cognitive, and motor skills through interactive play-based learning and fun environmentally focused activities. To develop happy healthy thriving children that have developed optimally for their age and love and respect nature and each other.



GK SCHOOLS

Supporting surrounding schools
with Green Initiatives and
Environmental Education

GK CLUBS

Hands-on afterschool learning
programme

Goal: Growing children who through active decision making are wildly passionate about the environment and the planet they live on which is delivered through a holistic programming approach in personal development and education

Education

Education programme initiative



Environmental Education programme that covers a range of experiences for young children forming a cohesive cradle to career pathway. An educational pathway from cradle to career applied with a lens of economic, environmental and social sustainability and regeneration. Our pathway is focused on growing people who are confident, well-rounded and have an authentic connection and understanding of the environment and natural heritage. Our aim is to create opportunities where individuals can make decisions about their own future, careers and the environment they live in.

Environmental Education



Rise Creche

A well designed environmental and sustainability focused creche programme home to the Eco Village. This will provide training to teachers and be the foundation for our Green Kidz as they grow up



Green Kidz Schools

Our Environmental Education programme that we teach at schools throughout the area in association with K2C. Included is WESA support and the GK Clubs after school.

Environmental Experiences



GK Club

Weekly after school activities both at the Eco Village and at our GK schools (+ holiday programmes)



GK Scouts

A unique take on scouts within our Green Kidz program with weekly scout meetings.



GK Field Trips

Off site visits to conservation or education facilities taken from our GK Clubs program



GK Camps

Learning Camps held during the school holidays at the Eco Village for our GK Club and GK Scouts program.

EDUCATION IMPACT THIS YEAR



RISE

Provided RISE Creche Education

To **50 children** through the Nourish creche, including classroom based learning, games, two meals a day and a snack

RISE OUTREACH visits

To **6 community based creches** in Hluvukani, Keyelani, Cottondale, and Sigaule villages. Provided ECD workshops to facilitators from these creches focused on financial budgets and nutrition. Porridge was sponsored and delivered to these creches contributing towards food security **through 79 200 meals**

ECD Training for Teachers

4 x virtual teacher training workshops were hosted for teachers from the RISE community creches, to focus on health and safety and play-based learning. This benefitted 24 beneficiaries.

New Playground Development

A recycled and upcycled playground was developed at the RISE Creche to enable play-based learning.

GREEN KIDZ

Fieldtrips

Provided **216 children** with conservation based field trips to a local game reserve, or wildlife learning space. This stopped during Covid due to funding constraints and restrictions on gathering.

Green Kidz Aftercare program

Provided aftercare and environmental education to **70 children** who came to Nourish Eco Village daily, as well as a healthy warm meal. The Aftercare program closed during lockdown but opened again when restrictions were lifted. Psycho-social support through supportive and friendly **yoga classes enabled sport development** for our Green Kidz through a locally trained yoga teacher.

Green Kidz Outreach

Our environmental monitors team provide environmental education to **7 primary schools** around the Acornhoek area. This reach is over 1400 learners impacted.

Nourish RISE Creche

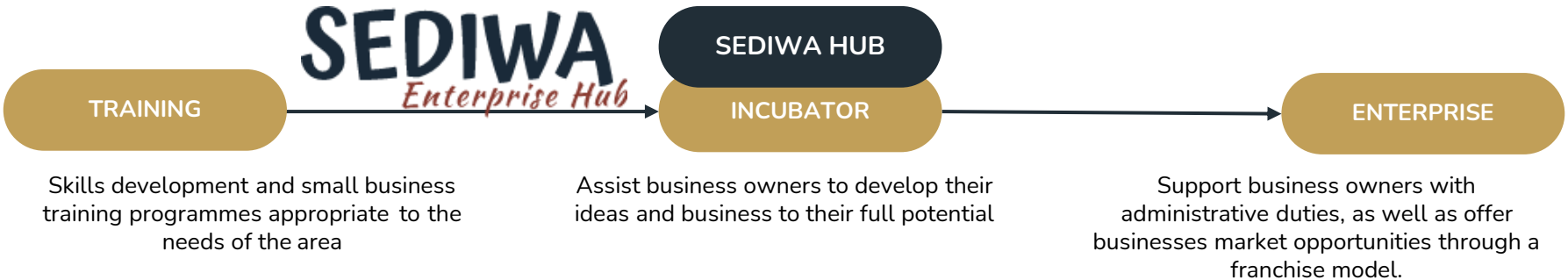




SEDIWA - Enterprise



Sustainable enterprise development and innovation in wildlife community areas. Equipping young adults with the skills and capacity to enter and build sustainable and green focused enterprises. To see young people from wildlife communities enter, flourish, and grow their local economies through informed personal choices and green enterprise.



Digital Lab



Sewing Project



Beauty/Spa



Culinary



Hospitality



Agri-Processing



Eco Building



External Partners



SMME Support



Social Enterprises

ENTERPRISE IMPACT THIS YEAR



TRAINING

SOCIONEXT business bootcamp

Hosted 2 x entrepreneur trainings for a week for **72 youth** from the local village enabling practical business skills.

SEWING workshop

Enabled **1 permanent position** as a seamstress through a Sewing workshop.

AGRIPROCESSING training

Learning how to pickle and process food like beetroot and chillies, as well as indigenous produce like monkey orange and Kalahari melon. We have focused this into a range of women's and men's products called **WILDFire** and **Bushfire** respectively.

Other training was put on hold due to COVID-gathering restrictions.

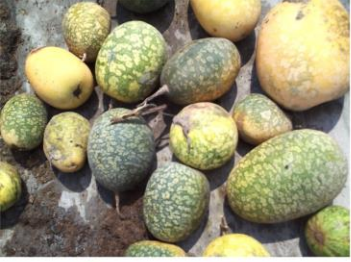
INCUBATION & ENTERPRISE

Incubation

Provided support for **the development of 2 product ranges, WILDFire and Bushfire**, which include a range of Moringa beauty and health products locally packaged and produced and a range of chilli and hot sauces locally grown and processed. These support livelihood generation.

Sewing business

This sewing centre has over the year sewn over **1500 reusable sanitary pads** which were distributed to teenage girls from local schools around Acornhoek. This sanitary pad outreach included and talk to girls about their bodies, and a small empowering yoga class.



***AGRI-PROCESSING for indigenous
produce and chilli products***

***SEWING
TRAINING and
SANITARY PADS***



Business franchise support

Nourish Social Enterprise

Through our two franchise programs, *(established in an adhoc manner since 2016 but formalized in 2021), entrepreneurs can take the time to work on their businesses while we support them with management, admin and training.

Bushfire – Chili Sauces and Products with an emphasis on Indigenous
Wild – Womens Initiatives in Livelihood Development, including a 'style' range for sewn products and crafts, and 'spa' range for beauty products made from Moringa



SUSTAINABLE TOURISM

Tourism is a key driver of the Nourish sustainability model, something we encourage active participation in. This allows visitors a chance to experience grassroots authentic cultural tourism, get to see the eco-village and make a difference knowing that the funds support livelihoods as well as Nourish. Sustainable tourism is a chance for us to enable local community members to benefit from the tourism industry that is so prevalent in the area. Positive livelihood support and authentic community interaction are two of the key project outcomes.

shik shack



ShikShack is set up as a social enterprise to support the Nourish Eco Village, but also provide authentic and alternative African tourism opportunities



SHIK SHACK - Tourism

Sustainable enterprise development and innovation in wildlife community areas.



SHIK SHACK COMMUNITY TOURS

Community operated tours through the local village that supports families that contribute to the tours.

- Cultural Tours
- Immersion Tours
- Activity tours



SHIK SHACK ACCOMMODATION

Eco accommodation as a social enterprise that feeds back into Nourish for income creation

- Backpackers
- Agritourism
- Teambuilding



NOURISH INTERNSHIPS

Internships based around the programming modules at Nourish that contribute to the income stream of Nourish.

- NGO Internships
- ECD Internships
- Eco Village internships

IMMERSIVE TOURISM

At Nourish Eco Village we do not operate a "volunteering program". We accept curious people to join us for an applied learning experience or an immersive cultural exchange. This means our project aims are not guided by marketing and sales, but rather by connecting people and passion to deliver real impact in our communities.

We believe in dignity focused tourism, where the people that stay behind after the experience do not feel lesser for it.



NOURISH
HANDS ON



NOURISH
INTERNSHIPS



IMMERSIVE
EXPERIENCES



CULTURAL
TOURISM

TOURISM IMPACT THIS YEAR



VOLUNTEERS & INTERNS

Hosted Volunteers

Hosted 14 volunteers at the Nourish Eco Village focusing on cultural immersion and contributing to the eco village activities. All funds from Volunteers go towards the NPO towards financial sustainability. This is a key income generator for unallocated funds. We are working towards Fair Trade Tourism credentials for our internship program to showcase our high ethics and community governance.

'A mind that is stretched by new experience can never go back to its old dimensions.'

- Oliver Wendell Holmes



Social Franchising/Ready for Replication

We have worked hard throughout the year to ensure the programming modules are robust, and that we understand what is included in the holistic projects and deliverables of an Eco Village. This is in order for us to look into expansion (through a social-franchise type system of replication) into new wildlife communities over the next 5 years focusing around Greater Kruger villages and communities. These additional nodes would be called Eco Village hubs.

AN ECO VILLAGE HUB BRINGS BENEFIT:

- Improved resilience in wildlife communities
- Improved educational pathways
- Employment opportunities
- Upskilled communities
- Improved rural livelihoods and development
- Reduced human wildlife conflict
- Reduced poaching and illegal wildlife trade
- Reduced impact on natural resources surrounding reserves
- Better communication between communities and protected areas





Thank you for reading our Nourish Annual report –
celebrating our successes, achievements and
journey over the year of 2021.

For more information go to:
www.nourishcovillage.com or contact
sarah@nourishcovillage.com

