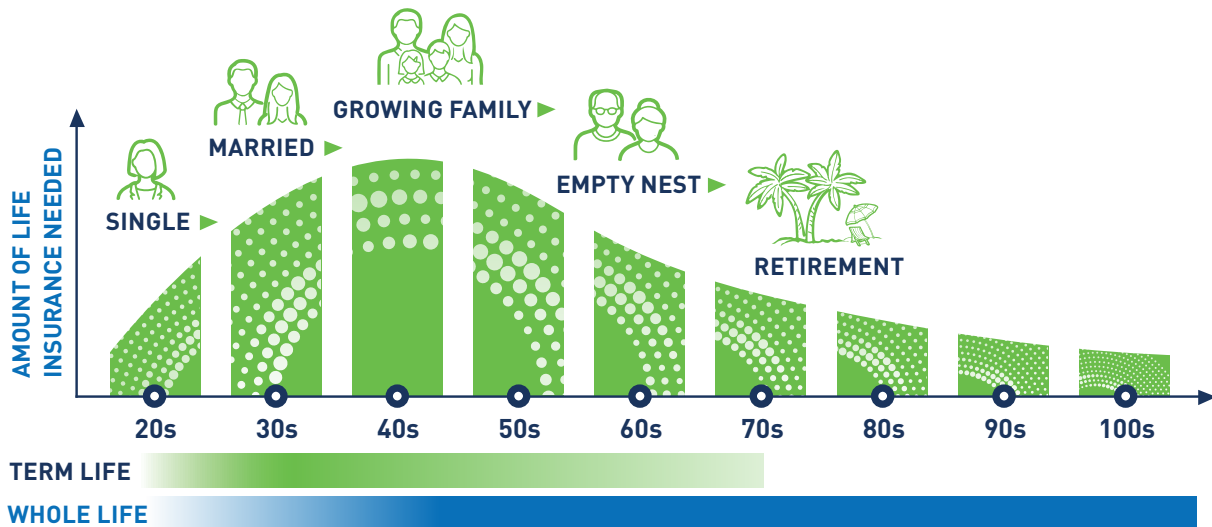


Financial protection throughout an entire lifetime

Life insurance needs can vary throughout a person's lifetime, so it's important to know they have options and how to use those options to get the best protection during the various stages of life. When used together properly, both term life insurance (term) and permanent life insurance (perm) can provide the flexibility and security employees and their families may need.

Term life is essential during an employee's working years, and whole life, also known as permanent life insurance, provides coverage well into retirement. When an employer's benefit includes both types of life insurance, they complement one another and provide valuable financial protection that can last an employee's a lifetime.



Combine Permanent Life with Term?

With term and whole life combined, employees have protection now and can access to valuable benefits later. Together, they provide employees, and their family with a comprehensive life insurance plan. In addition, employees can purchase coverage for their spouse and children.

The right solution is one that provides a balance between premium costs and plan benefits while meeting your benefit strategy. Often layering both term and whole life insurance products can provide the best in cost-effective and comprehensive protection.



\$7,848

The national median cost of a funeral with viewing and burial¹

Understanding permanent and term insurance



Whole Life Insurance Coverage you "Own"

- Provides coverage for your entire life, as long as you pay the premiums and don't cancel your policy
- Ideal for people who value predictability and security
- Builds cash value at guaranteed rate
- Premiums never increase and are based on the age when you buy the policy.
- A stable financial asset on your balance sheet that will never lose value year to year
- Cash value can be accessed over the lifetime through a policy loan to supplement retirement, college tuition, down payment on a home, a business, and emergency funds or pay the policy itself
- Guaranteed death benefit, generally free from federal income tax*
- Coverage is portable without premium increases



Term Life Insurance Coverage on "Loan"

- Provides temporary coverage for a particular length of time and expires when you reach the maximum age limit
- A good fit for people in their young adult years before a family is dependent on their income
- Essential protection while you're working
- Premiums can change over time based on the age of the policyholder, typically every 5 years
- Death benefit generally free from federal income tax*
- Option to convert to whole life insurance later without evidence of insurability, premiums can increase
- Portability is available, but may continue at a higher cost

*These statements are not intended as tax advice.

<https://nfa.org/news/statistics> - National Federal Directors Association

For sales, contact a member of our Group Markets team at (404) 266-5651 or email sales@atlam.com

Group Whole Life policy form series B 21803 GMP, Accelerated Death Benefit Rider for Terminal Illness form B 21803 R1 ACL, Accelerated Death Benefit Rider for Chronic Illness form B 21803 R12 CIACL, Restoration of Benefits Rider for Chronic Illness form B 21803 R13 ROBCI, Extension of Benefits Rider form B 21803 R14 EOBR, Children's Term Insurance Rider form B 21803 R8 CTR, Waiver of Premium for Disability Rider form B 21803 R9 WPD, and Accidental Death and Dismemberment Rider form B 21803 R10 ADD underwritten by Bankers Fidelity Life Insurance Company®. Limitations and exclusions apply; the terms and conditions in the actual policy and certificate provisions control. Refer to the specific policy and certificate for details. Application to determine eligibility may be required. The Policy, any optional Riders and the benefits therein are subject to availability and may vary by state. This is only a summary of products and services offered; actual offerings may vary by group size and other underwriting or legal considerations. This is a solicitation of insurance and an independent agent may call on you.

© 2023 Atlantic American Employee Benefits. All rights reserved.



**ATLANTIC
AMERICAN**
Employee Benefits

aaemployeebenefits.com

Atlantic American Employee Benefits
4370 Peachtree Road, NE
Atlanta, Georgia 30319
(866) 458-7502
sales@atlam.com



#Atlambenefits