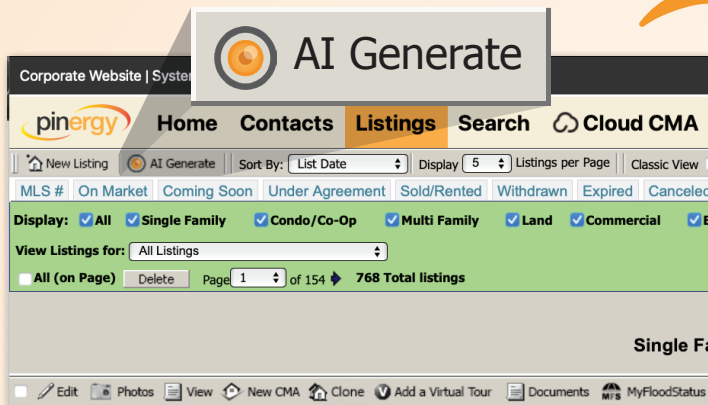


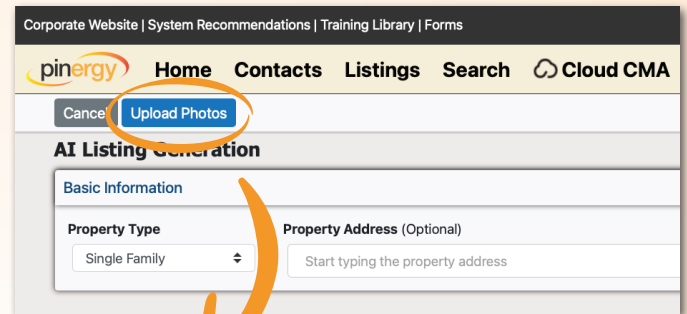
HERE'S HOW TO USE AI IN PINERGY TO SAVE TIME WHEN CREATING LISTINGS



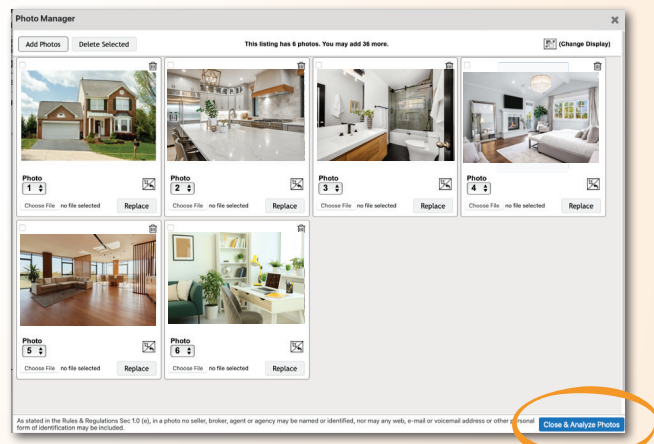
1 In "Listings," select the new "AI Generate" button.

2 Select "Upload Photos."

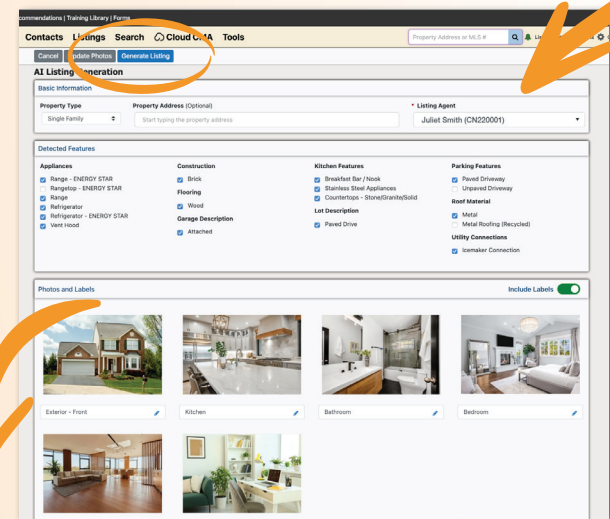
Note: AI Generate currently works with Single-Family and Condominium listings.



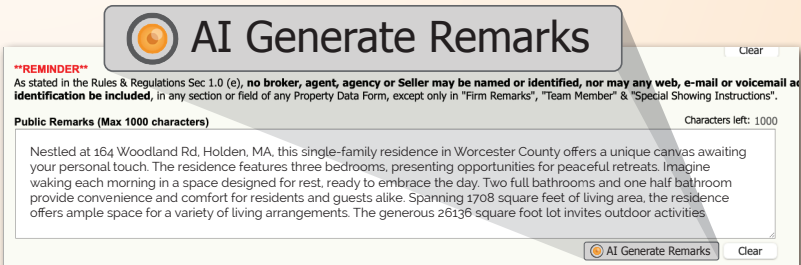
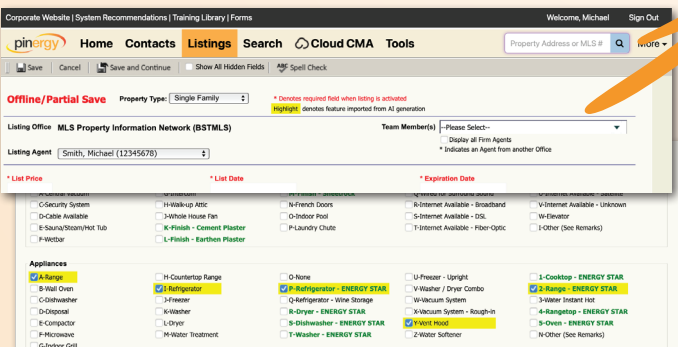
3 Add photos and select "Close & Analyze Photos."



4 Review "Detected Features" and "Photos and Labels," then click "Generate Listing."



5 A new listing will be started with features imported from AI generation (highlighted in yellow). Edit the listing data as you normally would, and save your offline listing.



6 Save even more time with "AI Generate Remarks" in Public Remarks! Choose from "Professional" or "Standard" tone, re-generate remarks if desired, then apply and edit them as needed.

(508) 845-1011



mlspin.com