



COASTAL CHARM WITH ROOM TO RELAX

The southern, coastal design of the Sandstone home plan makes it the perfect choice for relaxed seaside or lakeside living. Designed to fit most narrow lots, with the option of moving the two-car garage to the side, the Sandstone features 4 bedrooms, with a first-floor master, and 3½ baths,

including one with “Jack and Jill” amenities. A separate loft/media area is ideal for relaxing. The professionally designed kitchen comes with a separate cooktop and oven. And, of course, Excel Homes offers hundreds of customization options and upgrades to give you the home of your dreams.

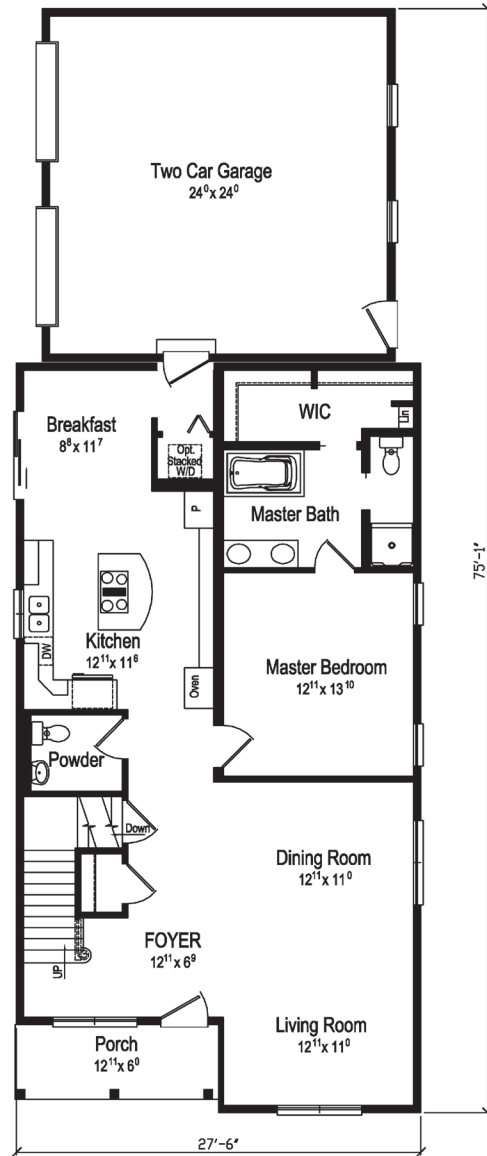
PLAN: SANDSTONE

1st Floor = 1320

2nd Floor = 1320

Total = 2640 S.F.

First Floor Plan Layout
9 foot Ceilings



Second Floor Plan Layout
8 foot Ceilings

