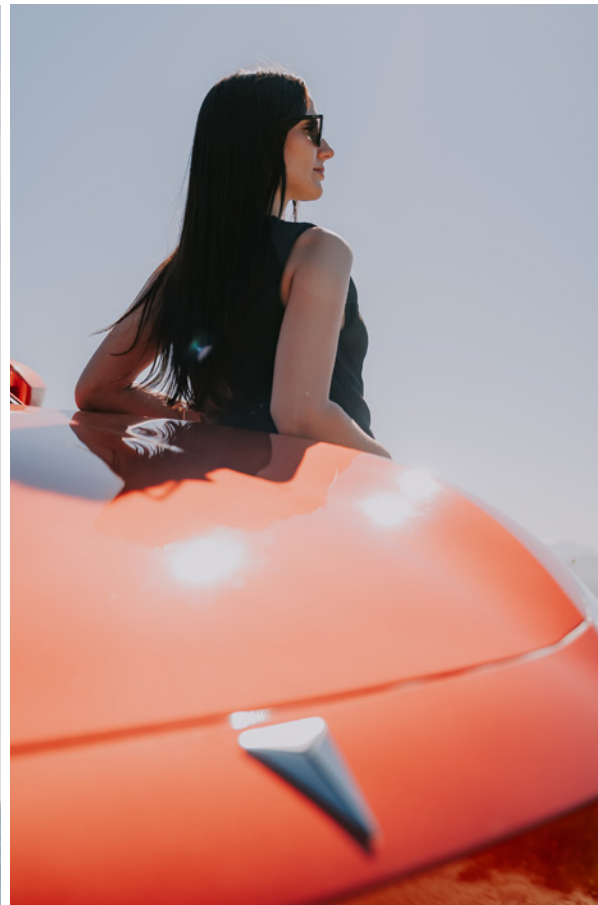


SINCE 1862

CHANGAN



DEEPAL S07



CHANGAN DEEPAL S07

A progressive, all-electric Luxury EV that blends refined design and comfort, with intuitive modern intelligence. The Deepal S07 offers the promise of tomorrow's EV practicality, today.

Minimalism meets meaning, elevating the standards of sophistication, with refined all-electric status.

EVERY DAY ELECTRIC ELEGANCE

The Deepal S07 is Changan's clearest call that the future has arrived, and that it's elegant, intelligent and attainable. As a smart, all-electric SUV with a sleek silhouette and high-end interior, the S07 demonstrates, what a "tech-forward" driving experience looks like for South Africans.

The S07 makes tomorrow's design, driving intelligence and energy transition not just imaginable - but physically available and desirable. It proves that the future of mobility can be sophisticated, clean and connected, while still grounded in everyday usability.





SCULPTED FOR THE FUTURE

Designed in Turin - Italy, the Deepal S07 is a visually modern and dynamic SUV, with its dimensions equating to the 'golden ratio', often associated with proportions in art, architecture and nature. Every line is purposeful - delivering both elegance and aerodynamic efficiency.

SIGNATURE LIGHTING IDENTITY

At the front, a distinctive grille design is paired with slim LED daytime running lights that cut through the dark with clarity and precision. The sculpted rear is anchored by wraparound LED tail lamps, creating a visual signature that is unmistakably forward-thinking.



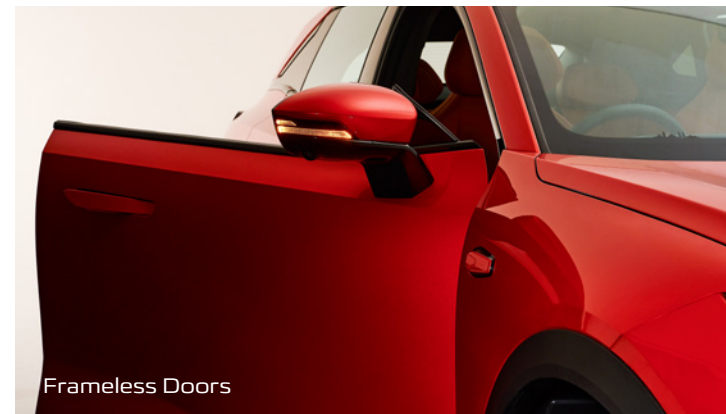
LED Headlamps
& Tail Lights



Heated Electric
Folding Mirrors



Concealed Door
Handles



Frameless Doors

DETAILS THAT DEFINE DISTINCTION

From its dynamic alloy wheels and frameless doors, to its flush door handles and floating roofline, the Deepal S07 is made to stand out with subtlety. These refined touches bring together a perfect balance of innovation and artistry, elevating the SUV into a true statement of tomorrow's EV motoring, today.



CHANGAN | 

INSPIRED BY YACHT-LIKE ELEGANCE

The Deepal S07's cabin draws inspiration from Mediterranean yacht design - open, flowing and refined. A unique centre console anchors the interior, with soft-touch surfaces and premium finishes that create a sense of calming sophistication.



MINIMALISM MEETS INNOVATION

Clean lines and uncluttered surfaces highlight the advanced tech within. The frameless door design extends seamlessly into the interior, while customizable ambient lighting, invisible air conditioning vents and refined panelling, create a futuristic yet welcoming space.





TECHNOLOGY AT YOUR FINGERTIPS

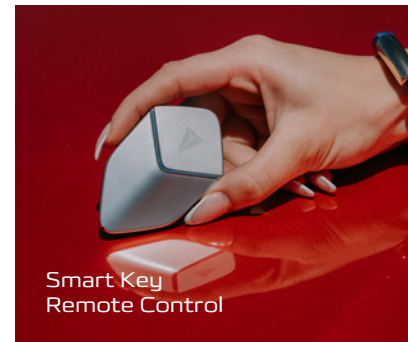
Inside, a massive 15.6-inch floating touchscreen driver infotainment system, paired with a 14-speaker sound system, offers a fully integrated digital driver experience - while ambient lighting sets the mood for every drive.

A CABIN FILLED WITH INTELLIGENT LUXURY

The Deepal S07 surrounds you with bespoke finishes and unique panelling rarely found in practical everyday EV's. The centre console and expansive panoramic sunroof create an airy, open atmosphere. Every element is designed to feel exclusive, refined and considered - turning every drive into a moment of distinction.



15.6-inch Sunflower Driver Infotainment System



Smart Key Remote Control



SMART ACCESS, SMARTER LIVING

The Deepal S07's remote smart key is more than just entry - it's control at your fingertips. From unlocking and starting the vehicle without ever reaching for the key, to remotely cooling or heating the cabin before you step inside, the smart key anticipates your needs. It embodies convenience, security, and modern living - making every journey start and end, effortlessly.



40W Wireless Charging Pad



PRACTICALITY, THOUGHTFULLY DESIGNED

Beyond its futuristic design, the Deepal S07 is built for real-life convenience. Cleverly placed cup holders and storage compartments, flexible seating configurations and ISOFIX, all offer practicality in abundance - without compromise. Rear passengers can enjoy dedicated USB Type-C charging points and air conditioning vents, for an elevated experience.



CAMERAS AND VISION, EVERYWHERE

The Deepal S07 enhances every journey with a 540° panoramic camera system, giving drivers complete visibility from every angle. Smart mirrors and high-definition reversing cameras make tight spaces effortless, while adaptive displays ensure optimum clarity, day or night.

ALWAYS CONNECTED, ALWAYS UPDATED

From wireless mobile charging to Wi-Fi, the Deepal S07 keeps you ahead of the curve. Gesture recognition and intelligent voice control put key functions at your command, creating a futuristic, intuitive driving experience that feels human and unintrusive.





CHANGAN | 



CONFIDENCE IN EVERY DRIVE

The Deepal S07 is equipped with a full suite of active safety technologies designed to anticipate, prevent and protect. Forward Collision Warning (FCW) and Autonomous Emergency Braking (AEB) work together to sense potential hazards ahead, helping you avoid accidents before they happen. Lane Departure Warning (LDW) and Lane Keeping Assist (LKA) keep you steady and centered, making long-distance drives safer and more relaxing.



SMART SAFETY, FOR EVERY OCCASION

Electronic Stability Programme (ESP), Traction Control System (TCS), Hill Start Assist (HSA) and Hill Descent Control (HDC) ensure complete control on every incline, decline or slippery surface. Together, these features keep the Deepal S07 capable and composed in any driving scenario.



ALWAYS AWARE AND ALWAYS ALERTED

Blind Spot Detection (BSD) and Rear Cross-Traffic Alert (RCTA) and fatigue detection add an extra layer of awareness, warning you of hidden risks and giving you the confidence to manoeuvre with precision and ease.



COMPREHENSIVE PROTECTION

Beyond technology, the Deepal S07 also delivers structural and passive safety. Multiple airbags, including front, side and curtain, work in unison with the vehicle's reinforced safety cell to protect all occupants. Automatic collision reaction systems ensure that in the event of an accident, occupancy wellbeing is prioritized. Safety isn't just a feature in the Deepal S07 - it's a promise.





Comet White



Lunar Grey



Nebula Blue



Sunset Orange



Eclipse Black

INTERIOR
TRIM OPTIONS



DIMENSIONS

Overall Length	mm	4750
Overall Width	mm	1930
Overall Height (Unladen)	mm	1625
Wheelbase	mm	2900
Ground Clearance	mm	165



CHANGAN DEEPAL S07 SPECIFICATION		
Configuration Level S07 L 5-Seater		
POWER SYSTEM		
Maximum Motor Power (kW)		160
Maximum Motor Torque (Nm)		320
Fast Charging Time (30% - 80%)	*Charger Dependent	35min
Power Consumption (CLTC)	kWh / 100km	≤ 14,2
Power Consumption (NEDC)	kWh / 100km	≤ 15,8
DISTANCE PER CHARGE (KM)		
Range (WLTP)	km	500
Range (NEDC)	km	560
WEIGHTS & DIMENSIONS		
Gross Combination Mass (GCM)	kg	3810
Gross Vehicle Mass (GVM)	kg	2490
Tare	kg	2100
Overall Length	mm	4750
Overall Width	mm	1930
Overall Height (Unladen)	mm	1625
Wheelbase	mm	2900
Front Track Width	mm	1640
Rear Track Width	mm	1650
Minimum Ground Clearance	mm	165
Doors & Seats		4 Doors / 5 Seats
Turning Radius	m	5.75
Front Luggage Capacity	l	125
Rear Luggage Capacity	l	445

CHASSIS		
Car Body Structure	Bearing Type	●
Steering	Continuous Damping Control	●
Front Suspension Type	MacPhersan Independent Suspension	●
Rear Suspension Type	Multi-Link Independent Suspension	●
Driving Type	Rear-Wheel Drive	●
Crumple Energy-Absorbing Steering Column		●
Electronic Power Steering	Motor Type	●
	3-Mode Power-Assisted Steering	●
Hub Material	Aluminum Wheel	●
Tyre	255/45R20	●
Branded Tyres	Dunlop	●
Spare Tyre	Temporary Tyre	Tyre Repair Kit
Front Wheel Braking	Vented Disk	●
Rear Wheel Braking	Solid Disk	●
CAR BODY STABILITY		
Anti-Lock Braking System	ABS	●
Electronic Brakeforce Distribution	EBD	●
Electronic Stability Program	ESP	●
Traction Control System	TCS	●
Brake Assist	BA	●
Hill Hold Control	HHC	●
Hill Descent Sontrol	HDC	●
Auto Hold	Automatic Park Brake	●
EXTERIOR & TRIMMING		
Engine Cover Supporting Rod	Air Pressure	●
Front Trunk	Front Trunk	●

Exterior & Trimming		
Towing Hook	Front Towing Hook	●
	Rear Towing Hook	●
Door Handles	Colour: Body Colour	●
	Induction Concealed Handle (x4 Electric Doors)	●
Charge Interface Cover	Opening Method: Press To Open	●
	Colour: Body Colour	●
Safety		
Safety Handle	3 Units	●
Safety Collision Level	C-NCAP 5-Star Rating	●
Parking Assist	Sound + Visual Parking Alert	●
	Front Parking Radar (2 Sensors)	●
	Rear parking radar (4 Sensors)	●
Collision Door Unlocking	Automatic	●
Speed Sensing Door Lock	Automatic	●
Airbag / Gas Curtain	Driver Airbag	●
	Front Passenger Airbag	●
	Front Row Side Airbag	●
	Front and Rear Row Integrated Safety Curtain	●
Child Safety Lock	Electronic Child Lock	●
Front Row Safety Belt Type	3-Point Force Limiting + Pre-Tensioner	●
Rear Row Safety Belt Type	3-Point Force Limiting + Pre-Tensioner	●
Front Row Safety Belt Height Adjustment	Heigh Adjustable	●
Safeyy Belt Fasten Warning	Tips Scope: Driver / Front Passenger	●
	Tips for Rear Row Safety Belt Unfastened	●
	Sound + Visual Alert	●
Tyre Pressure Monitoring	Direct Type	●
Energy Recycling		●
Child Seat Fixing Device	ISOFIX	●

Auxiliary Driving		
Safety Assistance		
Front Collision Warning	FCW	●
Automatic Emergency Braking	AEB	●
Lane Departure Warning	LDW	●
Pedestrian Recognition Auto Emergency Brake	AEB-P	●
Emergency Lane Keeping	ELK	●
Lane Keeping Assist	LKA	●
Lane Change Assist	LCDA	●
Rear Cross Traffic Alert	RCTA	●
Rear Collision Warning	RCW	●
Door Opening Warning	SEW	●
Blind Spot Detection	BSD	●
Rear Cross Traffic Emergency Brake	RCTB	●
Intelligent Driving		
Adaptive Cruise Control (ACC)	Cruise Control	●
	Following Control	●
	Stop-and-Go Control	●
Integrated Adaptive Cruise Control (IACC)	Traffic Sign Recognition (TSR)	●
	Lane Centering Control (LCC)	●
	Traffic Jam Assist (TJA)	●
	Lateral Deviation Control (LDC)	●
Anti Theft Devices		
Keyless Starting		●
Keyless Entry		●
Mobile Phone Bluetooth Key		●
BCM Anti-Theft		●
Open Door Warning	Warning Lamp / Alert Sound	●

ANTI THEFT DEVICES		
Key Type		
Emergency Mechanical Key	1	●
Central Locking	Front Row Left Door	●
Intelligent Remote Control Key	Pre-Installed Physical Key Antenna and Related Hardware	●
	Remote Key Vehicle Locator Function	●
	Key Remote Central Locking	●
Remote Interaction	Remote Control (A/C / Double Flashing / Whistle / Trunk / Sunroof etc)	●
Hand Brake Release Reminder		●
Headlamp Reminder		●
INTERIOR		
Steering Wheel		
Steering Wheel Material	Microfiber Leather	●
Steering Wheel Adjustment	Height + Depth Adjustment	●
	Manual	●
Steering Wheel Controls	Entertainment Key Integration	●
Other		
Air Outlet	Front Hidden Electric Air Outlet	●
	Second Row Manual Air Vents	●
	Second Row Touch Panels	●
Instrument		
Driver Information Screen		10.2-inch
Storage Space		
Front-Row Central Console 2-Cup Storage		●
Rear-Row Central Console 2-Cup Storage		●
Front Row 12V Onboard Power Supply	1	●
Driver Sun Visor	Sun Visor Ordinary Makeup Mirror + Light	●
Front Passenger Sun Visor	Sun Visor Ordinary Makeup Mirror + Light	●
Door Internal Handle	Electrically Opening Inner Door Handle	●

Storage Space		
Top Cover Lining Material	Knitting	●
Carpet Material	Fabric	●
Instrument Panel	Soft	●
Material of Door Interior Trim Panel	Soft	●
Gear Shift Type	Column Shifter	●
SEAT CONFIGURATION		
Seat Material		
Microfiber Leather Seat		●
Driver Seat		
Seat Adjusting Mode	Electric	●
Seat Adjusting Scope	6-Way	●
Electric Lumbar Support	4-Way	●
Seat Memory Function		●
Seat Usher		●
Seat Ventilation	Cushion + Backrest	●
Driver Seat Storage Bag		●
Front Passenger Seat		
Seat Adjusting Mode	Electric	●
Seat Adjusting Scope	4-Way	●
Seat Ventilation	Cushion + Backrest	●
Front Passenger Seat Storage Bag		●
Second Row Seat		
Backrest Seat Split-Folding	60 /40 Configuration	●
Rear Row Sliding	Forward / Backward	●
Middle Seat Headrest		●
Headrest Adjustment	Height Adjustable	●
Center Armrest	with Cup holder	●
ISOFIX Interface	Child Safety Seat Compatible	●

Second Row Seat		
Front-Row Seat Center Armrest Box	Yes	●
Center Console Display Screen	Human-Machine Interaction System and Information Display	●
Parking Simulation Video Display		●
GPS Navigation Image Display		●
AR-HUD	Augmented Reality Head-Up Display	●
Onboard Phone	Bluetooth-Enabled	●
Front Row USB Ports	2 (USB, Type-C)	●
Rear Row USB Ports	1 (Type-C)	●
Brand Audio	14 Speakers	●
LIGHTING		
External		
Headlamp Delay		●
Auto Headlamp Off		●
Headlamp Type	LED	●
Smart High Beam (FAB)		●
Rear Fog Lamp		●
LED Reversing Lamp		●
Electric Headlamp Angle Adjustment		●
Steering Lamp Layout Position		●
Front and Rear Lamps with Welcome Function		●
Taillamp Type	LED	●
Emergency Brake Warning Function		●
High-Mounted Brake Lamp		●
LED Daytime Running Lamp		●
Rear License Plate Lamp		●
LED Front Position Lamp		●
LED Rear Position Lamp		●

Interior		
Front Row Reading Lamp		●
Second Row Reading Lamp		●
Trunk Lamp		●
Open Door Warning Lamp		●
LED Ambient Lighting	Multicolour	●
DOORS & WINDOWS		
Trunk Opening Mode	Remote Control Opening	●
	Electric Tailgate	●
Sun Roof	Full-Width Roof	●
	Electric Sunshade	●
Frameless Door		●
Double-Layer Front Door Glass		●
Rear Triangular Window Glass	Privacy Glass	●
4-Door Power Window	Automatic Rain Sensing Closing	●
One-Key Open & Close	Control Scope: Four Doors	●
Automatic Defogging Function of Front Windshield		●
Rear Window Defrosting and Defogging	Manual Opening, Automatic Delayed Closing	●
MIRRORS & WIPERS		
Exterior Rear-View Mirror	Adjusting Mode: Power	●
	Exterior Rear View Mirror Heating	●
	Rear View Mirror Position Memory	●
	Auto-Folding Exterior Mirror	●
	Auto-Tilt In Reverse	●
Anti-Dazzle Interior Rear View Mirror	Anti-Glare Type: Automatic	●
Rear Wiper Type	Bone	●
Front Wiper Type	Boneless	●
Rain Sensors		●

INTELLIGENT FEATURES (CONNECTIVITY / INTERACTION)		
Image-Aided		
Digital Video Recorder		●
Around View Monitor	HD 360° Panoramic Image	●
Transparent Chassis		●
On-Board Entertainment System		
WiFi		●
Voice Control Function		●
Fatigue Detection		●
Vehicle Monitoring Device	Non-Remote Function	●
Hand Gesture Recognition		●
Sound Source Localization		●
Wireless Mobile Internet		●
Wireless Charging	40W	●
Central Control Screen	Capacitor	●
	Screen Rotation	●
High Definition Driver Infotainment Screen	15.6-inch	●
OTHER		
Low-Speed Pedestrian Warning Sound	OTA Customizable	●
PTC		●
Tool Box		●
Fast Charge Interface	EU Standards Interface	●
Slow Charge Interface	EU Standards Interface	●



DRIVEN TO EVOLVE

At Changan, we believe mobility should never stand still. Every vehicle we create is designed to evolve in the way it looks, the way it feels, performs and the way it fits into your life. From bold styling to intelligent technology, each model is built to adapt as your needs change and the world continually moves forward.

For South Africa, it means offering cars that not only keep up with the times but actively shape the future of mobility. Cars that make tomorrow's innovations accessible today, keeping you ahead of whatever comes next.

Changan is the perfect partner for South African's that won't settle for ordinary. Change is inevitable. And we're driving it.

Changan. Driven To Evolve.





EXPLORE
THE CHANGAN
RANGE ON
OUR WEBSITE

LEGAL NOTICE

Every effort has been made to ensure that the contents of this brochure is correct at the time of production. This brochure may be produced featuring prototype or accessorised vehicles exhibited at motor shows and in accordance with the company's policy of continuously improving its products.

The right is reserved to change the specifications and the vehicles described and shown in this brochure at any time.

DISCLAIMER

Features and specifications & claimed figures are subject to change & are market dependant on grade & equipment. Please consult your local changan dealership for more information.