



# CHANGAN

SINCE 1862



## HUNTER



In a category often dominated by overpriced, under spec'd legacy pickups, the Hunter elevates expectations by offering a bakkie that's as suited to the week, as the weekend. It redefines the rules of the pickup segment by proving that intelligent features and creature comforts belong in hard-working vehicles, too.



# READY FOR REAL LIFE. READY FOR WHAT'S NEXT.

The Changan Hunter merges future-ready innovation with utility. It blends traditional toughness with smart technology, comfort and versatility - in a stylish and affordable package.

It's built, not just to endure daily demands, but to grow with the grit of tomorrow. Tough where it counts and refined where it matters, it brings together strength, smarts and everyday versatility for drivers who aren't willing to compromise.





## DETAILS THAT WORK HARDER

Every feature is built with purpose - from chrome side mirrors and handles to utility hooks that add everyday practicality. The LED Daytime Running Lights not only sharpen the Hunter's unmistakable look but ensure better visibility to see and be seen.



## ENGINEERED TO BE TOUGH, STYLED TO STAND OUT

The Hunter stands tall with a design that blends rugged strength with contemporary style. From its bold front grille to the muscular stance, it communicates capability and confidence wherever it goes.



Alloy Wheels



## OWN A COMMANDING PRESENCE

With a range of 17-inch to 18-inch alloy wheels - for the MT and AT models respectively - a profile designed to handle both urban streets and off-road terrain, the Hunter offers a balance of toughness and refinement. It's a bakkie that doesn't just show up - it stands out.



## TURBOCHARGED POWER ON DEMAND

At the heart of the Hunter is a 2.0l turbo diesel engine, delivering 110 kW and 350 Nm of torque. Its power designed to meet the demands of South African roads whatever gets thrown at it. Strong enough for moving heavy loads, confident on the highway and dependable in demanding conditions.

## READY FOR ALL TERRAINS

With 2WD and 4WD options, the Hunter adapts to whatever the road (or off-road) throws at you. Expect hill start assist, hill descent control and a host of other driver assist features, to make hauling, towing or loading easier - so you're always ready to take on the next challenge.

## YOUR CHOICE OF CONTROL

Whether you prefer the engagement of a 6-speed manual gearbox or the smooth convenience of a 6-speed automatic, the Hunter offers choice. Hunter gearboxes are optimized to be heavy duty, without compromising on driveability, making every journey feel capable and confident.





## REFINED COMFORT IN A RUGGED WORLD

Step inside the Hunter and you'll discover a cabin that feels more SUV than bakkie. Premium leather seats, soft-touch finishes and a thoughtfully crafted interior elevate every drive, proving that toughness can also be comfortable.



## SMART DRIVER FOCUS

Behind the wheel, the Hunter surrounds you with convenience and control. A 4.2-inch driver information screen, multifunction steering wheel and tactile console buttons, create a cockpit that's intuitive and modern - giving you easy access to everything you need while on the move.



## SPACE THAT WORKS HARDER

Designed for long days and longer journeys, the Hunter's cabin delivers generous room for passengers, supportive seating and thoughtful storage options. Its practicality blended with sophistication - making each journey more enjoyable, whether for work or play.





## EVERYDAY EASE, ELEVATED

With a smart key system, keyless entry and push-button start-stop, getting in and setting off is seamless. The Hunter takes the hassle out of daily driving, incorporating useful convenience that simplifies your drive.



10-inch touchscreen infotainment system

## INTUITIVE CONTROL AT YOUR FINGERTIPS

From long-haul journeys to quick city commutes, features like cruise control, a refrigerated glove box and an impressive high-definition 10-inch infotainment touchscreen, all keep you comfortable, connected and in command.

## ENHANCED SAFETY PROTECTION

The Hunter is equipped with comprehensive safety features including front and side airbags, electronic stability control, traction control, ABS with EBD and BA and curtain airbags for AT 4WD. These systems work together to give you and your passengers peace of mind, no matter the terrain.

## PEACE OF MIND, BUILT IN

With a tyre pressure monitoring system, reverse camera and safety-focused smart technology, you're always backed by features that look after you and your passengers.





## BUILT FOR BIG LOADS

The Hunter is engineered with serious work in mind, offering an impressive loading capacity - with 1,000kg for 4WD and 1,100 for 2WD - that make it more than ready for demanding tasks. Whether it's for business or lifestyle, this bakkie is designed to carry what matters, without breaking a sweat.

## DIMENSIONS THAT DELIVER

Generous dimensions ensure space and strength in equal measure. With a practical load bay and 226mm ground clearance, the Hunter gives drivers the confidence to move cargo across urban and off-road environments alike - perfect for South African conditions.



## PRACTICAL POWER IN MOTION

From roof racks to a rugged load bed, the Hunter is as versatile as it is capable. Its design balances strength with utility, giving drivers not only the muscle to carry heavy payloads but also the clever details that make all the difference.





# AVAILABLE COLOURS



Stellar White



Lunar Silver



Metallic Grey




Electric Blue

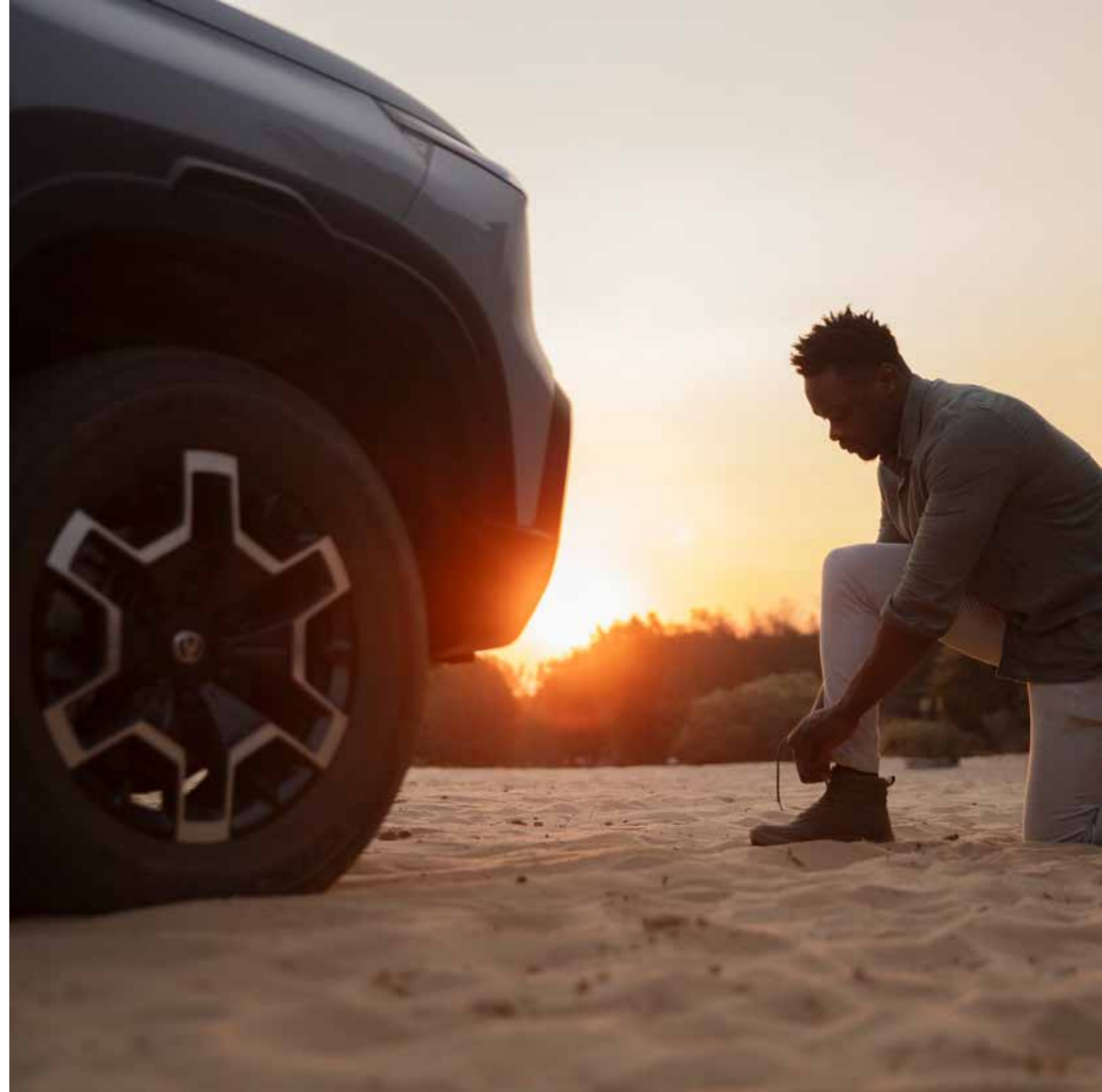


Red

## INTERIOR TRIM OPTIONS



Leather (AT 4WD)  
Fabric (MT 2WD)





# ACCESSORIES



Nudge Bar



Window Visors



Cattle Rails



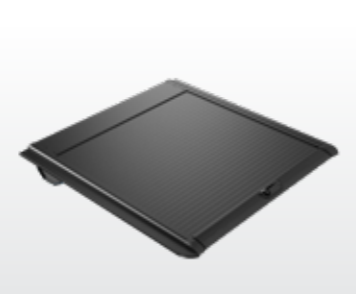
Seat Covers



Sport Bar K3 - Chrome



Sport Bar K3 - Black



Roller Shutter - Manual



Tonneau Cover (No Sport Bar)



Tow Bar (Generic Image)



Boot Organiser



Bicycle Rack - 4 Carrier



Tailgate Central Locking



Tonneau Cover (OEM Sport Bar)



Canopy - Xtreme (Doors with Windows)



Canopy - Xpedition (Solid Doors)



High Level Air Intake



Tailgate Assist



Dust Seal Kit (Generic Image)



Locking Wheel Nuts



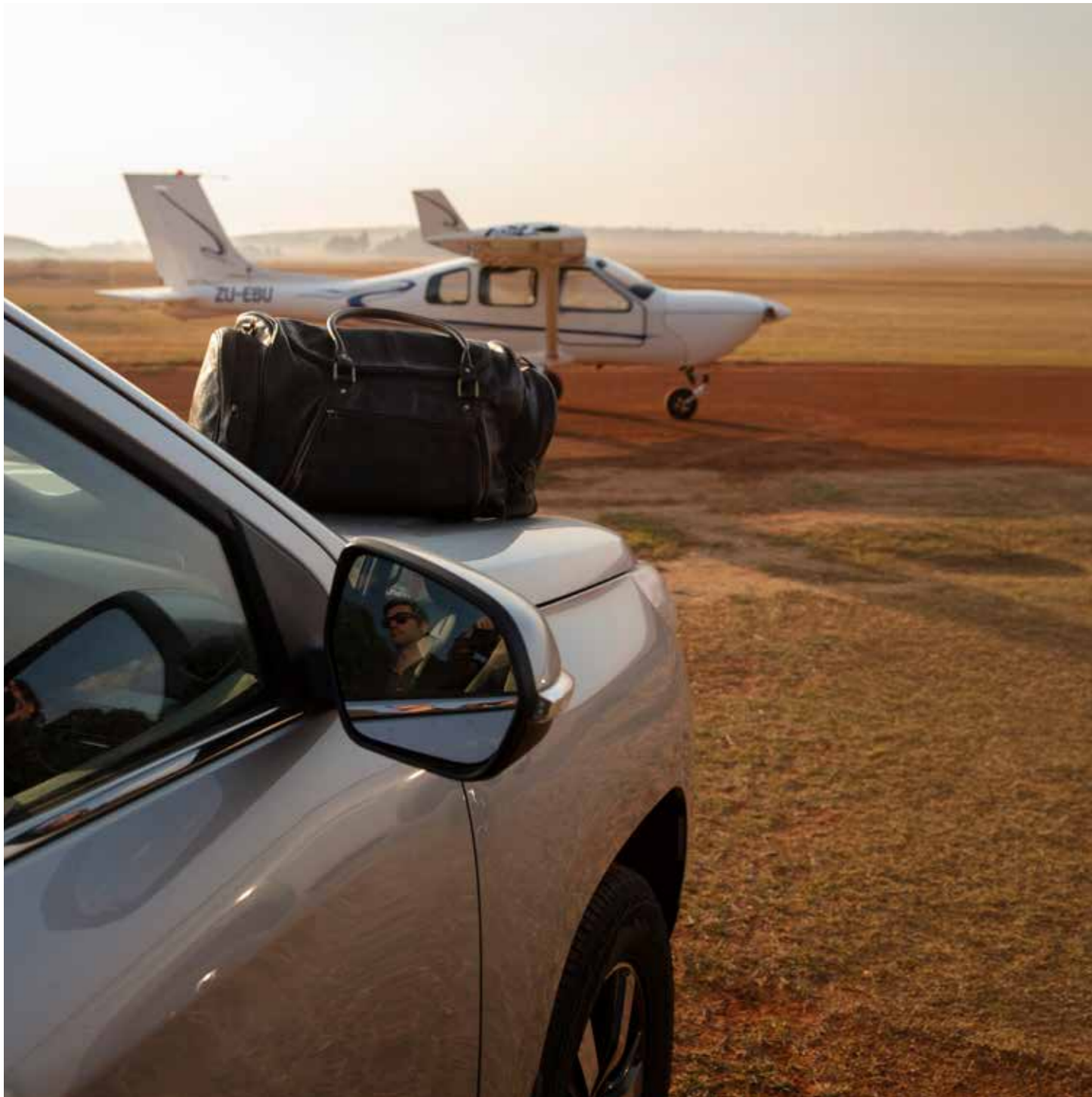
Spare Wheel Lock

# CHANGAN JOURNEY

When you choose Changan, you're not just choosing 160 years of innovation, you're choosing peace of mind and confidence for the long road ahead. Changan Journey is a comprehensive, end-to-end after-sales promise designed to keep your journey running smoothly and consistently, long after you've driven off the showroom floor.

From service and maintenance plans to extended warranties, roadside assistance, and the peace of mind that comes with servicing at an approved Changan dealership, every element of Changan Journey works together to protect your investment, your time and your peace of mind. Because being Driven to Evolve means standing by our Changan drivers, with care that goes the distance.





### **SERVICE PLANS: STAY ON TRACK WITHOUT SURPRISES.**

Changan Service Plans cover the cost of all scheduled services as outlined in your vehicle's service book, ensuring your Changan is always maintained according to factory standards.

Service intervals are 15 000 km, with a first service inspection at 5 000 km or 6 Months, across all models. The Hunter 4WD Auto is supported by a 5 Year / 90 000 km Service Plan, which is optional on the 2WD Manual. It's convenience, predictability, and performance - built into every drive.



### **WARRANTIES: CONFIDENCE COMES STANDARD.**

Your new Hunter is backed by a comprehensive 5 Year / 150 000 km Warranty that protects against manufacturing and mechanical defects for the duration of your coverage period.

It's our promise of reliability and quality so you can focus on the road ahead. For a full list of all parts covered under your Warranty, please visit [changanmotors.co.za](http://changanmotors.co.za).



### **CHANGAN DEALERSHIP ADVANTAGE: THERE'S NO SUBSTITUTE FOR GENUINE CARE.**

Servicing your vehicle at an approved Changan dealership means every technician is factory-trained, every part is genuine, and every update keeps your warranty intact. It's the smarter, safer way to protect your investment and keep your Hunter Diesel performing at its best.

Visit [changanmotors.co.za](http://changanmotors.co.za) to locate your nearest authorised Changan Dealer.



### **MAINTENANCE PLANS: FOR COMPLETE PEACE OF MIND.**

Changan Maintenance Plans go beyond regular servicing to include the replacement of key wear-and-tear components.

An optional maintenance plan is available across the Hunter Diesel range please enquire at your local Changan Dealership.

From brake pads to wiper blades, you're covered for the parts that keep your journey smooth and safe no unexpected bills, just worry-free driving.



### **ROADSIDE ASSISTANCE: HELP IS NEVER FAR AWAY.**

With 24-hour Changan Roadside Assistance, you're covered for breakdowns, flat tyres, battery jump-starts, and more - anywhere in South Africa. One call connects you to expert support, because every journey deserves backup you can trust.

**Customer Care Line  
086 184 7000.**

## CHANGAN HUNTER SPECIFICATION

MODEL		MT 2WD	AT 4WD
Model Code			SC1031PAAD4
Status Code		B5D	B6D
Configuration Level		LEVEL 2	LEVEL 4
POWERTRAIN			
Engine Type	Turbo-charged	2.0T D20TCID	2.0T D20TCID
Engine Size	ℓ	2.0	2.0
Displacement	cc	2000	2000
Number of Cylinders	4	●	●
Maximum Power	kW	110	110
Maximum Torque	N.m	350	350
Fuel Type	Diesel	●	●
Engine Emission Standard	Euro 4	●	●
Transmission	6MT	●	-
	6AT	-	●
Decorative Cover of Engine		●	●
Driven Wheels		RWD	AWD
Fuel Tank		80	80
Fuel Consumption	l /100 km	7,1	9.1
CO2 Emissions	g/km	239	239
VEHICLE WEIGHT & DIMENSIONS			
Tare Mass	kg	1950	2060
Gross Vehicle Mass (GVM)	kg	3050	3080
Gross Combination Mass (GCM)	kg	5080	5080
Front Axle	kg	1195	1295
Rear Axle	kg	1855	1785
Curb Weight	kg	1950	2060
Useful Payload	kg	1100	1020
Overall Length	mm	5330	5330
Overall Width	mm	1930	1930
Overall Height (Unladen)	mm	1875	1875
Wheelbase	mm	3180	3180
Load Bed	mm	1520 (L) × 1520 (W) × 500 (H)	1520 (L) × 1520 (W) × 500 (H)
Ground Clearance	mm	226	226
Approach Angle	Degrees	28	28
Departure Angle	Degrees	27	27
Turning Radius (Curb to Curb)	m	13	13

		MT 2WD	AT 4WD
WHEEL ASSEMBLY			
Wheel Material	Aluminium	●	●
Tyre	265/65 R17	●	-
	265/60 R18	-	●
Spare Wheel	Full-Size Steel Wheel	●	-
	Full-Size Aluminium Wheel	-	●
SUSPENSION SYSTEM			
Front Suspension System	Double Wishbone Independent Suspension	●	●
Rear Suspension System	Plate Spring	●	●
STEERING OPERATION SYSTEM			
Steering Wheel Adjustment	Tilt Adjustment	●	●
Power Steering	Hydraulic (HPS)	●	●
Differential Lock	Rear Differential Lock	-	●
Cruise Control		●	●
BRAKING			
Front Wheel Brake	Vented Disc	●	●
Rear Wheel Brake	Disc	●	●
Parking Braking	Mechanical Parking Braking	●	●
PASSENGER SAFETY			
Airbag	Driver Seat Airbag	●	●
	Front Passenger Seat Airbag	●	●
	Front Lateral Airbags	●	●
	Side Gas Proof Curtain	-	●
Three-Points Seat Belt of the Front Row	Limit Force	●	-
	Pre Tight & Limit Force	-	●
Three-Points Seat Belt Of The Rear Row	Common	●	●
Reminder Of Untied Seat Belt (Seat Belt Warning )	Driver's Seat	●	●
	Front Passenger Seat	●	●
	Rear Seat	●	●
Safety Belt Height Adjustable	Front Row	●	●
Door Lock	Central Locking	●	●
	Vehicle Speed Induction Type Automatic Door Lock	●	●
	Child Safety Lock	●	●
Child Safety Seat Interface (ISOFIX )		●	●
Electronic Anti-Theft		●	-

		MT 2WD	AT 4WD
<b>PASSENGER SAFETY</b>			
Engine with Electronic Anti-Theft		-	●
Directional Lock		●	●
Fold Remote Key		●	-
Smart Key		-	●
Keyless Entry & Go (PEPS)		-	●
Reversing Radar	2	●	●
Reversing Camera System		●	●
ABS+EBD		●	●
Tyre Pressure Monitoring System		●	●
Electronic Stability Program		●	●
ESP	Hill-Start Assist Control	●	●
	Hill Descent Control	●	●
	Braking Assistance System	●	●
	Traction Control System	●	●
	Switch off ESP	●	●
<b>EXTERIOR</b>			
Mudguard	Front Mudguard	●	●
	Rear Mudguard	●	●
Protected Board of Engine		●	●
Door Handle	Body-coloured	●	-
	Chrome Plate	-	●
Side Pedal	Aluminium Alloy	●	-
	Stainless Steel	-	●
Rear Pedal	Carbon Fiber	●	●
Antenna	Common External Antenna	●	●
Protective Fence for Cargo	Aluminium Alloy	●	-
	Stainless Steel	-	●
Roof Rails (Double Cab Only)		-	●
<b>INTERIOR ACCESSORIES</b>			
Whole-coverage Interior Trim		●	●
Sun Shield	Sun Shield at the Driver's Seat	●	●
	Bill Fold at the Driver's Seat	●	●
	Sun Shield at the Front Passenger Seat	●	●
	Makeup Mirror at the Front Passenger Seat	●	●

		MT 2WD	AT 4WD
<b>INTERIOR ACCESSORIES</b>			
Glove Box		●	●
Glove Box Refrigeration		●	●
Central Arm Rest Area Cup Holder	2	●	●
Anti-Dazzle Interior Rearview Mirror		●	●
Telescopic Cup Holder		●	●
<b>INSTRUMENT AND AUXILIARY INSTRUMENT PANEL</b>			
Vehicle Computer Screen	4.2 Widescreen	●	●
Cigar Lighter	Cigar Lighter Socket	●	●
<b>SEATS</b>			
<b>SEAT UPHOLSTERY</b>			
Fabric		●	-
Leather		-	●
<b>FRONT DRIVERS SEAT</b>			
Manual Adjustment	6-Way	●	-
Electric Adjustment	6-Way	-	●
Lumbar Support		-	●
Up And Down Adjust of Headrest		●	●
Storage Bag on the Backrest		●	●
Hook on the Backrest		●	●
<b>FRONT PASSENGER SEAT</b>			
Manual Adjustment	4	●	-
Electric Adjustment	4	-	●
Up And Down Adjust of Headrest		●	●
Storage Bag on the Backrest		●	●
Hook on the Backrest		●	●
<b>REAR PASSENGER SEAT</b>			
Forward Turnover of Backrest	60:40	●	●
Upturning of Cushions	60:40	●	●
Headrest	3	●	●
Up And Down Adjust of Headrest		●	●
Central Armrest of Rear Row		●	●

		MT 2WD	AT 4WD
<b>LIGHTS</b>			
<b>ROOM LIGHT</b>			
Front/Rear Reading Light		●	●
Welcome Lights on the Door Trim (2 Doors)		●	●
Tool Box Light		●	●
<b>OUTER LIGHT</b>			
Halogen Main Lights		●	●
Adjustable Headlight Electric Angle		●	●
Automatic Headlight		-	●
Day Running Light	LED	●	●
Front Fog Light		●	●
Cargo Bed Light	3rd High Mounted Stop Light	-	●
Hook on the Backrest		●	●
<b>MULTIMEDIA</b>			
Central-Control Large-Size Colour Screen	10 Inch	●	●
Mirror Link		●	●
Radio		●	●
Mp5		●	●
Mp3		●	●
Bluetooth		●	●
USB	3	●	●
12V Electric Outlet		●	●
Number of Loudspeakers		● 4	● 6
<b>GLASS / MIRRORS</b>			
Glass Type	Green Glass	●	●
Front Side Window	Electric	●	●
	One-Touch Feature and Anti-Clip Function (Driver Side)	●	●
Rear Side Window	Electric	●	●
Exterior Rearview Mirror	Body Coloured	●	●
	Electric	●	●
Front Windscreen	Boneless Windscreen Wiper	●	●
	Cleanser	●	●
	Automatic Wiper	-	●
Rear Windscreen	Rear Window Demister	-	●

		MT 2WD	AT 4WD
<b>AIR CONDITIONER</b>			
Air Heater		●	●
1 Zone Manual HVAC		●	●
Rear Air-Outlet		●	●
Rear Feet Blow		●	●
<b>CARGO BED</b>			
12V Socket in the Cargo Bed		-	●
Outer Rope Hook		●	-
Inner Rope Hook		●	●
Door Handle of Cargo Bed	Body-coloured	●	-
	Chrome Plate	-	●
<b>ACCESSORIES</b>			
Triangle Warning Board		●	●
Tools Equipped with the Vehicle		●	●
<b>SERVICE &amp; WARRANTY</b>			
Service Intervals	First Service / Inspection @ 5000 km / 6 Months	15 000 km	15 000 km
Service Plan	5 Year / 90 000 km	Optional	Standard
Vehicle Warranty	Standard	5 Year / 150 000 km	5 Year / 150 000 km

# DRIVEN TO EVOLVE

At Changan, we believe mobility should never stand still. Every vehicle we create is designed to evolve - in the way it looks, the way it feels, performs and the way it fits into your life. From bold styling to intelligent technology, each model is built to adapt as your needs change and the world continually moves forward.

For South Africa, it means offering cars that not only keep up with the times but actively shape the future of mobility. Cars that make tomorrow's innovations accessible today, keeping you ahead of whatever comes next.

Changan is the perfect partner for South African's that won't settle for ordinary. Change is inevitable. And we're driving it.

**Changan. Driven To Evolve.**





EXPLORE  
THE CHANGAN  
RANGE ON  
OUR WEBSITE

#### LEGAL NOTICE

Every effort has been made to ensure that the content of this brochure is correct at the time of production. This brochure may be produced featuring prototype or accessorised vehicles exhibited at motor shows and in accordance with the company's policy of continuously improving its products. The right is reserved to change the specifications and the vehicles described and shown in this brochure at any time.

#### DISCLAIMER

Features and specifications & claimed figures are subject to change & are market dependent on grade & equipment. Please consult your local Changan dealership for more information.