

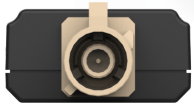
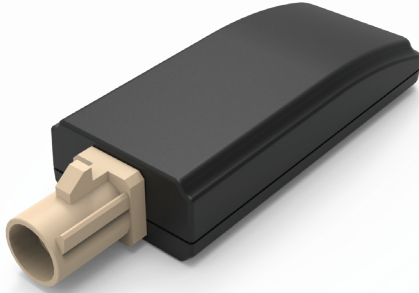
Vehicle Antennas

• JEBSEE •

AN8240

2.4-5.0GHz/Wi-Fi/BT/ISM

Wi-Fi/BT External Antenna



Features

- **In-Vehicle Connectivity Enhanced**

This antenna ensures robust performance within 2.4, and 5.0 GHz frequencies, tailored to enhance Wi-Fi functionality as well as Bluetooth compatibility, for a superior wireless experience in vehicles.

- **Versatile Mounting Design**

Crafted for mounting on or beneath vehicle dashboards, this antenna also.

- **Flexible Connector Customization**

The connector is available in various FAKRA codes to accommodate the diverse specifications of customer applications.

Model No.		AN8240	
Item		Wi-Fi/BT	
Antenna I			
Frequency Range	MHz	2400 – 2485	5150 – 5850
Peak Gain	dBi	0.5	2.5
Efficiency	%	50 typ.	60 typ.
VSWR	:1	2.0 max.	2.0 max.
Impedence		50	
Polarization		Linear	
Radiation Pattern		Omni-Directional	
Connector		FAKRA-Male (Code H, other code available)	
Mounting		Adhesive	
IP Rating		IP42	
Dimensions		42(W) x 52.3(L) x 12(H) mm	