

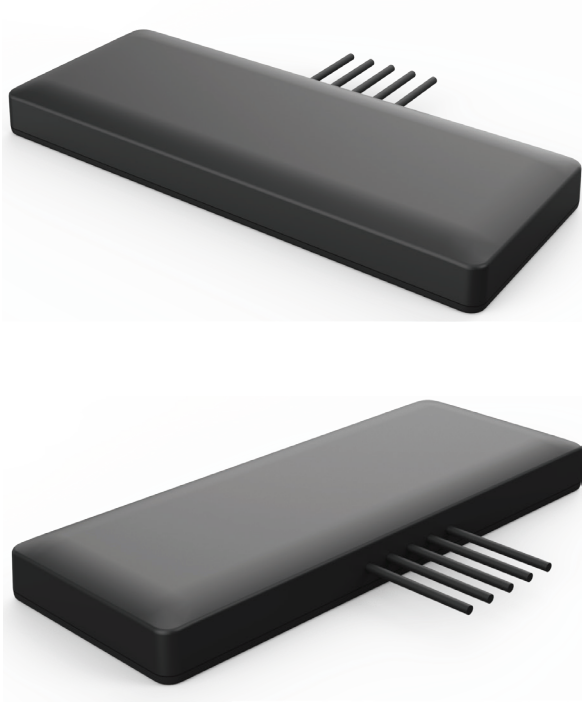
# Vehicle Antennas

• JEBSEE •

## AN8210

### 5-in-1 Combination External Antenna

2x2 MIMO 5G NR/4G LTE Full band + V2X  
2x2 MIMO 2.4-5.0-6.0GHz/Wi-Fi 7/BT/ISM + V2X  
GPS/GLONASS/QZSS/Galileo/IRNSS/L1L5



#### Features

- **Advanced Wireless Technology**

With 2x2 MIMO 5G NR/4G LTE full band and 2x2 MIMO 2.4-5.0-6.0GHz Wi-Fi 7, this product delivers a high-speed and stable experience for both cellular and wireless networks.

- **Precise Positioning**

Advanced multi-frequency GNSS support (GPS, GLONASS, Galileo, BeiDou) across L1 and L5 frequencies guarantees accurate and reliable location tracking.

- **Flexible Installation**

Ground plane independent design allows for versatile placement options without compromising antenna performance.

#### Application

- **Vehicle telematics**

Enables reliable 5G/4G/Wi-Fi connectivity for in-vehicle telematics systems, supporting fleet management, vehicle tracking, and other connected car applications.

- **Autonomous Vehicles**

Provides precise GNSS data for navigation, safety systems, and autonomous control in electric and self-driving vehicles.

Model No.		AN8210			
Item					
Antenna 1, Antenna 2		2x2 MIMO 5G NR/4G LTE Full band + V2X			
Frequency Range	MHz	617-960	1427-2690	3300-5000	5150-5925
Peak Gain	dBi	1.4	3.0	3.3	2.0
Efficiency	%	45 typ.	50 typ.	50 typ.	45 typ.
Output VSWR	:1	3.0 max.	2.0 max.	2.0 max.	2.0 max.
Polarization			Linear		
Radiation Pattern			Omni-Directional		
Cable			RTK031, 3000mm *2 (Any Cable Length Available)		
Connector			FAKRA-Female (Code D) *2 (Other Connectors Available)		
Antenna 3, Antenna 4		2x2 MIMO 2.4-5.0-6.0GHz/Wi-Fi 7/BT/ISM + V2X			
Frequency Range	MHz	2410-2490	4920-5925		5925-7125
Peak Gain	dBi	3.2	3.6		3.5
Efficiency	%	50 typ.	50 typ.		45 typ.
Output VSWR	:1	2.0 max.	2.0 max.		2.0 max.
Polarization			Linear		
Radiation Pattern			Omni-Directional		
Cable			RTK031, 3000mm (Any Cable Length Available)		
Connector			FAKRA-Female (Code H) (Other Connectors Available)		
Antenna 5		GPS/GLONASS/QZSS/Galileo/IRNSS/L1L5			
Frequency Range	MHz	1164 - 1188			1559 - 1606
Gain at Zenith	dBi	2.96			4.01
Axial Ratio	dB	0.27 - 1.50			1.1.0 - 1.80
Polarization		RHCP			RHCP
Radiation Pattern		Hemispherical			Hemispherical
LNA Gain	dB	28.0 ± 3.0			28.0 ± 3.0
Noise Figure	dB	3.0 max.			3.0 max.
Output VSWR	:1	2.0 max.			2.0 max.
Out-of-Band Rejection	dB				
Saw Filter Type					
Current Consumption	mA				
Cable					
Connector					
		Mechanical			
		Adhesive			
		IP67			
		185(W) x 72(L) x 18.5(H) mm			