

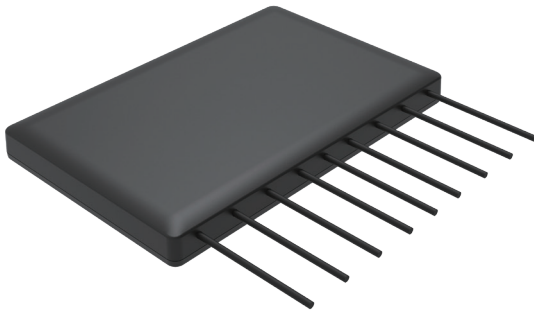
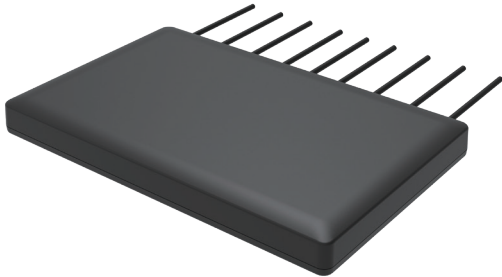
Vehicle Antennas

• JEBSEE •

AN8202

9-in-1 Combination External Antenna

4x4 MIMO 5G NR/4G LTE Full band + V2X
4x4 MIMO 2.4-5.0-6.0GHz/Wi-Fi 7/BT/ISM + V2X
GPS/GLONASS/QZSS/Galileo/IRNSS/L1L5



Features

- Comprehensive Wireless Connectivity**

Featuring 4x4 MIMO technology and supports 5G NR/4G LTE full band, and 2.4-5.0-6.0GHz Wi-Fi 7, delivering high-speed and stable cellular and wireless network connectivity.

- Precise Positioning**

Advanced multi-frequency GNSS support (GPS, GLONASS, Galileo, BeiDou) across L1 and L5 frequencies guarantees accurate and reliable location tracking.

- Flexible Installation**

Ground plane independent design allows for versatile placement options without compromising antenna performance.

Application

- Vehicle telematics**

Enables reliable 5G/4G/Wi-Fi connectivity for in-vehicle telematics systems, supporting fleet management, vehicle tracking, and other connected car applications.

- Autonomous Vehicles**

Provides precise GNSS data for navigation, safety systems, and autonomous control in electric and self-driving vehicles.

Model No.		AN8202			
Item					
Antennas 1-4		4x4 MIMO 5G NR/4G LTE Full band + V2X			
Frequency Range	MHz	617-960	1427-2690	3300-5000	5150-5925
Peak Gain	dBi	3.2	3.0	2.0	2.5
Efficiency	%	45 typ.	40 typ.	25 typ.	25 typ.
Output VSWR	:1	3.0 max.	2.0 max.	2.0 max.	2.0 max.
Polarization		Linear			
Radiation Pattern		Omni-Directional			
Cable		RTK031, 3000mm *4 (Any Cable Length Available)			
Connector		FAKRA-Female (Code D) *4 (Other Connectors Available)			
Antennas 5-8		4x4 MIMO 2.4-5.0-6.0GHz/Wi-Fi 7/BT/ISM + V2X			
Frequency Range	MHz	2410-2490	4920-5925		5925-7125
Peak Gain	dBi	3.2	2.0		2.5
Efficiency	%	30 typ.	20 typ.		35 typ.
Output VSWR	:1	2.0 max.	2.0 max.		2.0 max.
Polarization		Linear			
Radiation Pattern		Omni-Directional			
Cable		RTK031, 3000mm *4 (Any Cable Length Available)			
Connector		FAKRA-Female (Code H) *4 (Other Connectors Available)			
Antenna 9		GPS/GLONASS/QZSS/Galileo/IRNSS/L1L5			
Frequency Range	MHz	1164 - 1188			1559 - 1606
Gain at Zenith	dBi	2.96			4.01
Axial Ratio	dB	0.27 - 1.50			1.10 - 1.80
Polarization		RHCP			RHCP
Radiation Pattern		Hemispherical			Hemispherical
LNA Gain	dB	28.0 ± 3.0			28.0 ± 3.0
Noise Figure	dB	3.0 max.			3.0 max.
Output VSWR	:1	2.0 max.			2.0 max.
Out-of-Band Rejection	dB				
Saw Filter Type					
Current Consumption	mA				
Cable					
Connector					
Mounting		Adhesive			
IP Rating		IP67			
Dimensions		192(W) x 125(L) x 18.5(H) mm			