

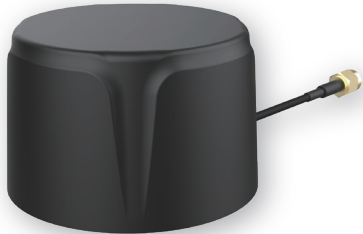
UAV/UGV Antennas

• JEBSEE •

AN1519

GPS/GLONASS/BEIDOU/QZSS/Galileo/IRNSS/
L1/L2/L5

GNSS L1/L2/L5 External Antenna



Features

- **Advanced Multi-Frequency GNSS Support**

This antenna supports GPS, GLONASS, Galileo, and BeiDou systems across L1, L2, L5 frequencies, ensuring precise and reliable positioning.

- **Durable and Waterproof Design**

Featuring an IP67-rated enclosure, the antenna is built to withstand harsh environmental conditions, making it ideal for outdoor and vehicle installations.

Application

- **Electric and Autonomous Vehicles**

Provides precise GNSS data for navigation, safety systems, and autonomous control in electric and self-driving vehicles.

- **Fleet Management and Asset Tracking**

Enables real-time vehicle tracking and route optimization for efficient fleet management.

- **High-Precision Mapping**

Ideal for surveying and mapping applications requiring accurate and reliable GNSS positioning.

Model No.		AN1519							
Item									
Antenna I		GPS L2/L5, BDS B2, Galileo E5a, E5b				BDS B1, GPS L1 Galileo E1, GLONASS L1			
Frequency Range	MHz	1176	1207	1227	1245	1561	1575	1602	
Gain at Zenith	dBic	2.54	5.73	5.83	1.52	5.45	5.57	4.08	
Axial Ratio	dB	1.58	1.15	1.28	1.42	1.52	1.44	1.88	
Polarization		RHCP				RHCP			
Radiation Pattern		Hemispherical				Hemispherical			
LNA Gain	dB	28.0 ± 3.0				28.0 ± 3.0			
Noise Figure	dB	3.0 max.				3.0 max.			
Output VSWR	:1	2.0 max.				2.0 max.			
Out-of-Band Rejection	dB					50 min.			
Saw Filter Type						Pre-Filter			
Current Consumption	mA					40 max. @ 3.0 – 5.5 VDC			
Cable		RG-174/U, 3000mm (Any Cable Length Available)							
Connector		SMA-Male (Other Connectors Available)							
		Mechanical							
Mounting		Adhesive							
IP Rating		IP67							
Dimensions		66(Ø) x 42(H) mm							