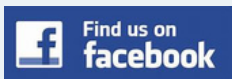


The Tattler

The bimonthly newsletter of Beuaraba Living ~ for residents, members and wider community



Residents proudly filled the garden space with colourful paintings on handcrafted items. Each piece reflects the unique personality and imagination of our Residents, bringing joy to everyone who stopped to admire.



March/April in this issue
Executive Team Report, Board News,
Lifestyle Resident Activities, Residents' Charter of Aged Care Rights
plus all your regular features.



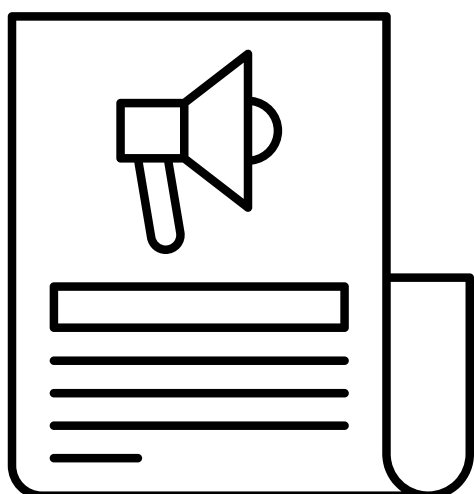
OPENING HOURS CONTACT DETAILS

Please note, we are currently not accepting any new patients, at this time. Clinical hours may be reduced on Wednesday & Fridays. We thank you for your understanding.

Beuaraba Medical Centre Phone 07 4619 8412

Monday - CLOSED
Tuesday - 8:30am - 5pm
Wednesday - 8:30am - 5pm
Thursday - 8:30am - 5pm
Friday - 8:30am - 5pm
Saturday - CLOSED
Sunday - CLOSED

Easter Garden Display	1 Pastoral / Church info, Dates of Interest.	11
Contents	2 BLA and Op Shop	12
Knitting & Crochet Group	3 A word from the Board.	13
Leadership Team	4 Resident Artwork and Activities	14
Information & Op Shop Hours	5 Lesley Johnson Retirement	15
Meet the Team - Fritzie	6 Weale Team Residents	16
This is Your Life - Barry Warfield	7 Weale Team Residents.	17
This is Your Life - Barry Warfield	8 Daniel Team Residents	18
Pittsworth Show 2026	9 Daniel Team Residents	19
Giftng & Giving /Accreditation	10 Word Search.	20
	Colourng Page	21
	Statement of Rights & Aged Care Act	22
	Strengthened Aged Care Quality Standards	23
	Supporters Page	24



PITTSWORTH PLAZA CHEMIST

Next to Woolworths Supermarket

Shop 8

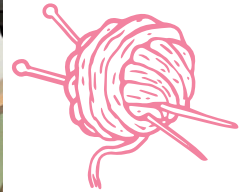
122—126 Yandilla Street
Pittsworth Qld 4356

Phone—07 4693 1855

Mon-Fri : 8.30am to 5.30pm
Sat: 8.30am to 12.30pm



Prescriptions * Home Medication Reviews * Vitamins



A group of residents at Knitting and Crocheting Group bring warmth, creativity, and companionship to their home. Each week, they gather with colourful yarn and shared enthusiasm, working on projects while enjoying conversation and laughter. The group isn't just about crafting – it's a chance to connect, build friendships, and take pride in creating something beautiful together.





**AREK
FUEL**

CARD ONLY

24/7 Fuel Station

Pittsworth

office@arekfuel.com.au





A big welcome to everyone for another issue of the Tattler. At the time of writing, we are facing some significant challenges with the global situation exerting significant pressure on the community with overall cost of living pressures including significant fuel supply and cost concerns. We will continue to work with the team to do all that we can within our limited resources to assist where possible.

We recently held a full team meeting at which we recognised some significant years of service to Beauaraba Living. More on this (and some great photos) in the next issue.

St Patrick's day was huge with green everywhere as well as a visit from Elvis and it also coincided with another visit from the amazing team at Moviliti Dental Services.

A wonderful and reflective Easter; we take this opportunity to thank the local churches for their ongoing support and encourage you to check out the resident garden display to the right of the main Beauaraba entry from Weale Street.

On Friday the 17th April we will be holding an onsite presentation of the cuddle bed donated by the Belinda McGowan Foundation.

Congratulations to the residents who won prizes for entries in the recent Pittsworth Show. All entries were amazing, however the scones stood out to me and caused some friendly rivalry amongst different areas of Beauaraba Living.

Thank you to the residents, families who participated in the latest Consumer Advisory Body Meeting. I am looking forward to the next one, please enquire at reception if you would like to join this group.

A reminder that the Aged Care Act brings with it strengthened accreditation standards, statement of rights, code of conduct along with revised complaint and whistleblower policies.

It is important to remember that when considering residential aged care everyone's circumstances are different, please reach out to us to make a time to run through the process and what aspects may or may not be relevant to your unique situation, please don't just accept what you hear in the media or see on social media.

Until next time, *Remember that a community working together can achieve anything.*

Brad, Janet, Sarah, Sue.

Pittsworth
Betta
pittsworth@mybeta.com.au
www.beta.com.au

YOUR LOCAL
LOCAL
APPLIANCE &
FURNITURE
SPECIALISTS

GO LOCAL
That's Betta!

FURNITURE
ZONE

51 Yandilla Street, Pittsworth, 4356
PH: 07 4693 1467

HELP US TO HELP YOU
Tell us what we do well,
how we can improve!

If you have any suggestions or comments, please contact:

Chief Executive Officer
Beuaraba Living

10 Weale Street
Pittsworth Qld 4356
Ph: 4619 8422
Fax: 4619 8400

Email: enquiries@beuarabaliving.org.au
 or **Board Chair**

Mr Wayne Saal 0429 955 892

Follow **Beuaraba Living** on **Facebook**



Beuaraba Living Auxiliary



Op Shop Opening Hours

Monday	9 am to 4 pm
Tuesday	9 am to 4 pm
Wednesday	9 am to 4 pm
Thursday	9 am to 4 pm
Friday	9 am to 4 pm
Saturday	9 am to 11.30 am

New Volunteers are Welcome

Drop in & see us at the Opportunity Shop
Donations gratefully accepted,

Note—Furniture by prior arrangements only.

94 Yandiilla St, Pittsworth



BEAUARABA LIVING FOUNDATION
Tree of Reflection

Have you thought of purchasing a leaf?
 For **\$150 per leaf** you can honor your loved one's memory. For an application and details, call to the admin office or email enquiries@beuarabaliving.org.au OR call in or drop by to see the Tree of Reflection for some inspiration.

Thank you for your support !

Suggestion Box: Please also remember you can fill out a feedback form found with the Suggestion Boxes which are situated in all the foyers. Staff on duty can assist you if required. These forms can then be placed inside the box for daily collection.

or

External Avenues that you may use if the issue is not resolved:

Qld Aged & Disability Advocacy

- Freecall 1800 818 338

Aged Care Quality and Safety Commission

- Freecall 1800 951 822
- agedcarequality.gov.au

PITTSWORTH
PLAZA
CHEMIST



Shop 8

122—126 Yandilla Street
Pittsworth Qld 4356

Phone—07 4693 1855

Mon-Fri : 8.30am to 5.30pm
Sat: 8.30am to 12.30pm

Meet the Team - Fritzie Tattler

Traveling Feet

Fritzie and her family arrived in Australia in 2020, a year defined by global uncertainty. They traded the vibrant energy of Cebu, Philippines, for the red earth of Southern Cross, WA. It was a bold leap for Fritzie, who brought with her a high-level background in banking, finance, and a flourishing career in the insurance industry.

But Fritzie's story has always been one of movement. As her grandmother used to say, she was born with "traveling feet."

In 2013, that spirit took the family to the United States, where Fritzie raised her two daughters for five years while her husband worked—navigating a new culture far from the comforts of the familiar. Though they briefly returned to the Philippines to be near loved ones, the pull of adventure remained. A few years later, they were at the airport once again, clutching only the essentials and a shared determination to build something new.

Australia captured Fritzie's heart during quarantine in Cairns. Looking out toward the Esplanade, she was enamoured by the vibrant colors of birds of different shapes and sizes at different times of the day. Strangers greet you "how you going?". People standing in line without being told. She was struck by the simple kindness of strangers and the quiet order of a welcoming community.



By Christmas 2021, that same mix of nervousness and enthusiasm saw the family relocating once more, eventually finding their way to Pittsworth.

In this new chapter, Fritzie pivoted toward a long-held dream: aged care. She always asked herself "what skills do I have to offer?" She began as a cleaner, transitioned to the front desk as a receptionist, and has now carved out a space in HR Support. For Fritzie, every role has been an adventure in learning. Today, the streets of Pittsworth are no longer unfamiliar—the neighbours have become friends, and those friends have become family; and now Pittsworth has become home.

We welcome your feedback-

Tell us how we are going: We always welcome your feedback, this is what guides us as to what is being done well and what can improve. *Providing feedback is very easy just Scan this QR Code with your mobile device then follow the prompts. Thank you.*



cains pharmacy

phone: 4693 1028 fax: 4693 1689 email: pittsworthpharm4356@gmail.com

healthS+VE[®] pharmacy

We offer our valued customers;

- ✓ Vaccinations
 - ✓ Medicine & Health Checks
 - ✓ Leave Certificates
 - ✓ Piercings
 - ✓ Webster Packs
 - ✓ Weightloss Program
 - ✓ Local Delivery
- and so much more!

63 Yandilla Street
Pittsworth

Monday - Friday:
8:30am - 5:30pm

Saturday:
8:30am - 12 noon

 **DON'T FORGET TO FOLLOW US ON FACEBOOK!**

Local at heart[®]

This is Your Life - Barry Warfield

By resident Brian Pierce

A former Pittsworth businessman believes the town needs to further develop its industrial base.

Barry Warfield, aged 92, managed an anhydrous ammonia fertiliser plant known as Downs Fertiliser Company for 32 years. It has since been taken over by a New South Wales company. As well as NH3 application, the company did aerial spraying and crop sprays.



Mr Warfield says that Pittsworth needs more industries and there's a lot of potential for future development. At present, it has a big poultry business, as well as a farm machinery development and the making of trailers. These developments require the employment of 40 to 50 people.

Another issue that's been hotly debated for 40 years is that of a bus service from Toowoomba to Pittsworth. And a former rail motor service from Toowoomba to Millmerran stopped at Pittsworth and returned to Toowoomba in the afternoon.

In his youth, Barry Warfield played rugby league for Valleys in the 1940s. Cheeky players to emerge then were Bobbie Banks, Maxie Faux and Georgie Coutts. Faux and Coutts were half backs. Banks was a centre, and all were said to be free spirits or cheeky little buggers. Faux used to undertake spectacular dives when in sight of the tryline. Barry called it lair-rising, but he and Maxie remained good mates and used to go to the coast on fishing trips, as well as play lawn bowls and cricket. Fauxie's partner was Marie Crisp. Faux was a linotype operator, as was John 'Cracker' McDonald before he hit the big-time Sydney rugby league with Manly. Barry Warfield began as a fullback and ended up as a lock forward, wryly commenting that he became progressively slower, in keeping with the position.

Reflecting on today's rugby league games, he says they are very different from what he knew growing up. In his day, opposing fullbacks fought for ball advantages then a scrum meant a resumption of play.

Valleys fullback Max Higgins and Souths Bevan Hoyle were evenly matched so it took some time to bring about a result.

Continued on next page.

The Grange Country Villas
Independent Living Units

**For more information or to view the units
Phone Diane on
4693 1718
17 Short Street, Pittsworth.**

This family owned and operated village offers:

- ◆ Large 2 bedroom units
- ◆ Beautiful, spacious grounds
- ◆ Do as much or as little in the garden as you like.
- ◆ Help on hand for maintenance
- ◆ Personal service you can't find in larger villages

**Come and see us at
The Grange!**

Today the half backs look for a line out to decide the issue. Shin pads were used in times of play the ball to protect legs. Another difference is that backs are sometimes as big as forwards, whereas in times past there was a clear distinction between the size of forwards and smaller backs.

Barry and Ellen met 70 years ago at a birthday party in Tooowoomba. They have two children Julie and Karen, and grandchildren Robin, Sarah and Emma. Robin has been to China on a cultural exchange visit.

After writing this story about former Pittsworth businessman, Barry Warfield, it occurred to me I had scant knowledge about a product this company was selling, namely, NH₃. It's been in strong demand by farmers. To throw some light on the subject, I sought the help of former agronomist, Kev Loveday. I want to thank him for the following contribution.

NH₃ is the chemical formula for ammonia, so N is nitrogen and H is hydrogen. Nitrogen is important for crops – it's the single most important nutrient - you have to have nitrogen. The only plants that can do with lower levels are legumes because they fix nitrogen from the atmosphere – most plants can't.

Ammonia is 86 per cent nitrogen so it's very concentrated. It's a poisonous gas – it's not like a bag of fertiliser– so there are a lot of issues with the manufacture, distribution and safety of it. The other important nitrogen fertiliser is urea – urea only has 46 per cent nitrogen – so you can see ammonia is nearly double and of course being a liquid – you're not lifting bags of urea and that sort of stuff – a manufacturing plant was built in Brisbane from which they started manufacturing ammonia for farm use.

Ammonia is a liquid gas and it's not very heavy. To successfully transport it they reduce the temperature and increase the pressure, and it goes into liquid form and then it has to be kept at that increased pressure. The ammonia is taken to different depots on the Downs, such as Dalby and Pittsworth. It's stored in tanks and then distributed in smaller tanks, 1 tonne – 2 tonnes to farms. These tanks are then hauled around by an applicator like a scarifier or plough and it's injected through tubes into the ground because it has to be covered up straight away or it would evaporate. It is taken from the tank through a meter which regulates how much you are putting on. The meters have a dial which works out how many pounds per acre (kilos per hectare) you want to put down.

DOWN'S PROPERTY Agents

- RESIDENTIAL SALES
- AUCTIONEERING
- PROPERTY MANAGEMENT
- RURAL SALES

— LOCALLY OWNED AND OPERATED —

Discover The DPA Difference

TONY DEVER
PRINCIPAL / AGENT
0412 727 661 | Shop 1, 90A Yandilla St, Pittsworth 4356
tony@downsproperty.com.au

SOPHIE FACER
PROPERTY MANAGER
0488 612 436
admin@downsproperty.com.au

Well done to all our residents who entered and those who placed in their categories at the Pittsworth Show at the start of March.

Residents entered an assortment of categories including, scones, colouring and crafts.

All areas prepared scones with the residents - Felton received a second place.



Several residents entered colouring ins - Sylvia Hudson received a 1st, Carol Ware 2nd, Denise Bennett 3rd.

Coral Bailey entered three items into the needlework (crocheting) she received a 1st and two 2nd places.

Helen Windsor entered three items into the needlework (knitting) she received two 1st places and one 2nd place.

Margaret Penfold entered two items in the art work receiving a 1st and 2nd place.



reception@mooretrailers.com.au

MOORE
TRAILERS

MOORE TRAILERS PTY. LTD
58 FRENCH RD.
PITTSWORTH.
QLD. 4356



Moore trailer for your money!

(07) 4693 1088
www.mooretrailers.com.au



'Giftng & Giving'



Donna Brotherson has kindly made and donated these beautiful Sensory Mats. Each mat is created with a variety of textures designed to provide calming sensory stimulation for those who benefit from tactile engagement.



Under the New Aged Care Act effective from 1st November 2025 we remain accredited under the Australian Aged Care Quality and Safety Commission.

The terminology has now moved to being a registered provider of Australian Aged Care Services.

For Beuaraba Living this registration period is now 1st November 2025 to 28th December 2028.

We continue to progress our plans for continuous improvement and are always striving to excel in all areas to be the best that we can be. We look forward to you all assisting us in this endeavour.

EDEN HILLS SIMMENTALS & SIMBRAH

WOULD LIKE TO THANK OUR BUYERS, UNDERBIDDERS, AGENTS & LEEGRA FITTING SERVICE. WE APPRECIATE YOUR SUPPORT.



SOLD

Eden Hills Peter Pan





SOLD

Eden Hills Q Net

SIMMENTAL AND SIMBRAH

-Eden Hills-

BEEF GENETICS FOR THE FUTURE

Janet Newlands and Family

0427 931 927 PHD

March



St Patricks Day - Tuesday 17th
 Pittsworth Show - 6th-7th
 Toowoomba Show - 26th-28th

April



Good Friday - Friday 3rd
 Easter Monday - Monday 6th
 World Health Day - Tuesday 7th
 Earth Day - Wednesday 22nd
 ANZAC Day - Saturday 25th



Other Choices of Pastoral Carer / Church Services offered to Beauaraba Living Residents.



Harvest New Life Church — Pastor Brett Dolly – **0418 615 773**

nlc.pittsworth@gmail.com 129 Short Street, PO Box 125, Pittsworth Qld 4356

I call down to Beauaraba from 10:30 - 11:30 am on a fortnightly basis.

Lutheran Church— Pastor Charlie Uebergang, General inquiries **0436 428 212** email:

pittsworthlp@gmail.com. St Peters Lutheran Church, 31 Hadley St, Pittsworth Qld.

Church. Beauaraba Living Services held 3rd Friday Monthly.

St. Andrew’s Anglican Church— Parish Priest :Father Tony Swansson Phone **0439 876 110**.

email: pittsworth@anglicanchurchsq.org.au 30 Hume St, PO Box 44 Pittsworth Qld. Parish

Services: Saturday 6:00pm, Sunday 9:00am. **Beauaraba Living services 4th Friday Monthly.**

St. Stephen’s Catholic Church Pittsworth — Parish Priest Fr Thomas Areekuzhy

0407452859. 34 Hume Street, PO Box 22, Pittsworth Qld 4356. Mass Times 1st Sunday

Liturgy of the Word 8:30am, 2nd Sunday, Saturday Vigil 6:30pm, 3rd Sunday Mass

8:30am, 4th Sunday Mass 8:30am, 5th Sunday Mass 8:30am.

Beauaraba Living Services held 2nd Friday Monthly

Uniting Church—Rev. Willie Liebenberg Phone: **0477 888 185** email: willie@wkuc.org.au

15 Briggs St, Pittsworth 4356. Willie doesn’t visit at a set time, but is always available if someone wants to see him.

Uniting Church: Worship times: Sunday 9:00 am in Murray Street, Pittsworth Uniting

Church. Days could visit: Tuesdays – Fridays contact details in the Tattler: Rev. Willie

Liebenberg.

Millmerran Bible Baptist Church— Pastor Brendan Zimmermann **0422 044 454**

darlingdowns@trinitybrisbane.org. 43-45 Walpole St Millmerran Qld. Every Sunday

9:30am - Cultural Centre *Bible Preaching *Hymns *Bible Study *Sunday School



Beuaraba Living
Auxiliary— Notes
Committee - 2024/25

- Chairperson: Anita Ruhle
- Vice Chair: Ann Garland
- Secretary: Veronica Henricks
- Treasurer: Barbara Piper
- Roster Clerk: Denise Farrell
- BLA-Op Shop Coordinator : Kate Hanley

Hello Readers,

As this edition of the Tattler goes to print, hopefully we have put away the summer clothing and the winter clothing will be hanging on the racks. So if you need warm clothing, call in to browse and make your selection from lots of Men’s, Ladies, Children’s and Babies clothing to choose from.

Flannelette sheets, blankets, knee rugs and doonas will be on the Manchester shelves but get in quick as these items sell fast.

Also lots of Furniture, Electrical goods, Manchester and household items to check out. We might just have what you have been looking for.

With winter looming we have lots of craft items to keep the fingers busy, books to read, games and puzzles to complete, toys for the children, CDs and DVDs to choose from.



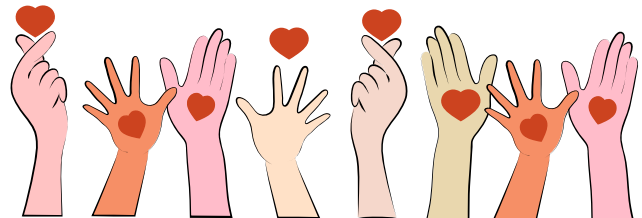
We ♥ our Volunteers

Don’t be afraid to ask the ladies if you cannot find what you are looking for. They will endeavour to try their best to find what it is that you are looking for.

Thank you to everyone who donates items to the op shop, and customers who purchase said items. Without this kind gesture, the op shop would not be able to help pay for medical aids, linen, beds, (to name a few) or whatever is needed by residents and staff to help make their life a little easier at Beuaraba Living.

Stay warm, safe, happy and healthy.

From the Op Shop Volunteers



Volunteering can help you make friends, learn new skills, advance your career, and even feel happier and healthier. Learn how to find the right volunteer opportunity for you.



 <p>PITTSWORTH DISTRICT ALLIANCE <i>Building a sustainable future</i></p> <p>For a better and stronger Pittsworth community</p> <p>info@pittsworth.org www.pittsworth.org</p>	<p>Pittsworth District Alliance PO Box 503 Pittsworth QLD 4356</p> <p>E: info@pittsworth.org</p>	<p>Tourism and Events</p> <p>E: pittsworththevents@gmail.com</p>
	<p><i>Vision Statement:</i> To build and develop Pittsworth to achieve sustainable economic and lifestyle benefits for the district. <i>Mission Statement:</i> That the Pittsworth District Alliance identifies, develops, leads and supports, as appropriate strategically important projects and lobbies for sustainable economic growth that will position this district as an attractive place to live, work invest and visit.</p> <p>Phone - 0481 353 055 </p>	



It was a great honour to be invited to join the Board of Beauaraba Living last year, and I sincerely thank members for placing their trust in me. In many ways, it felt like coming full circle. My Dad previously served on the Board, Mum volunteered at the Op Shop and was a long-standing member of the Hospital Auxiliary, and in the final years of her life, Beauaraba Living was home to my Nana (back then it was known as The Lodge).

Returning after many years, it has been wonderful to see how Beauaraba Living has evolved. The addition of the Brookstead and Pampas Memory Support Houses, the beautifully appointed Irongate and Norwin wings, and the tranquil outdoor spaces are outstanding assets for Residents and the wider community. What has remained unchanged, however, is the warm welcome at the front door and the genuine care, dedication and professionalism of the entire team.

The philosophy that *“the Residents do not live in our workplace – we work in their Home”* is clearly lived and breathed every day. This ethos, so strongly led by Brad, Janet, Sarah & Sue reflects Beauaraba Living’s core values of integrity, teamwork, respect, compassion, focus, innovation and environmental awareness.

This commitment was particularly evident at the recent Staff Awards, where five team members were recognised for their many years of service. Congratulations to Colleen Shepherd (5 years), Stephanie Bowden and Susan Uebergang (both 10 years), Catherine Lyons (20 years) and Trish Weber (25 years) – between them that’s an incredible 70 years with Beauaraba Living! As Brad noted on the day, *“our staff are the heart of what we do,”* and Brad reminded the Team that *“you can go home at the end of every shift, knowing you’ve made a difference to the lives of the Residents.”*

It has also been lovely to see Residents enjoying recent activities, including the return of carpet bowls, the weekly knitting group, and plenty of fun celebrating St Patrick’s Day. Some of the Residents also took advantage of the recent inhouse visit by the dentist.

The Board would also like to thank the members of the Consumer Advisory Board. Their recent meeting provided thoughtful ideas and valuable feedback, all focused on enhancing Residents’ quality of life. The Board greatly values their time, insights and ongoing involvement.

The Board welcomes feedback from Residents, families and staff alike. While compliments are always appreciated, constructive feedback is equally important in helping us continue to improve.

I would also like to thank my fellow Board members for their warm welcome and collaborative approach. Together, they bring a diverse range of skills and experience that ensures Beauaraba Living is in very capable hands.

Regards, Gail Black

Resident Artwork and Activities — Tattler



Recently residents have been participating in group activities with AIN Christie Morris which have produced wonderful art pieces which have since been displayed as you walk through the facility.

The vibrant floral artworks were proudly created by residents from Irongate, The Lodge, Kincora and Norwin Units. One Friday afternoon, while scones were baking and the aroma filled the air, creativity took centre stage. What you can see are the finished masterpieces. Each piece reflects creativity, individuality and joyful experimentation. The Brief - Each resident received a small blank canvas, a plastic freezer bag tied to form a mini balloon, a handful of cotton tips, and an array of paints. With these simple tools, imagination did the rest.



Marble Art - These artworks have been completed by one of our Memory Support Units, Brookstead. The brief was to make an artwork using nothing but a canvas, a marble, paint and a tray to lay the canvas in. By rolling paint covered marbles across the canvas, residents engaged their fine motor skills, hand eye coordination and focus, all whilst having a lot of fun. This form of art encourages creativity without pressure, supports cognitive stimulation and promotes a sense of accomplishment.



R P G
RELIABLE
PROFESSIONALISM
GUARANTEED

- ◆ Tap & Toilet Repairs, Burst Pipes
- ◆ Gas Installation & Repairs
- ◆ Hot Water System/Solar
- ◆ Roofing & Guttering
- ◆ Blocked Drains

DARCY KNAUTH
QBSA 1175684

0448 772 201

Pittsworth and Surrounding Areas

ADVERTISING SPACE AVAILABLE



Contact

admin@beauarabaliving.org.au

To Enquire
Now



In March we saw the retirement of Lesley Johnson after 10 years of care service as an Assistant in Nursing here at Beauaraba Living.

Celebrating on the day Lesley received both her 10 years service award and a gift of flowers from local florist Clover Country as a token of appreciation.



We sincerely thank Lesley for her years of service and wish her all the best as she enjoys a well-deserved retirement.

Cheers to
RETIREMENT!



**Rural Sales | Residential Sales |
 Property Management | Clearing Sales**

Whether you're looking to sell or lease your property, we offer complimentary, no-obligation market appraisals. Speak with one of our local area specialists about your real estate needs today.

Ray White Rural Pittsworth
 65 Yandilla Street, Pittsworth
 07 4693 1644 | sales.pittsworth@raywhite.com
 raywhitepittsworth.com.au



Beuaraba Living Weale Team Residents



Fresh Flowers Daily - Delivering to Pittsworth, Toowoomba & Surrounds

- Weddings
- Quality Giftware
- Luxury Homewares
- Bespoke Baby & Toy Range
- Gourmet Food & Self Care Hampers

Clover Country

Monday - Friday 9am - 5pm
Saturday - 8:30am - 12noon
Sunday - CLOSED

FLOWERS & GIFTS



Beuaraba Living
Weale Team Residents





Beauaraba Living
Daniel Team Residents



LINDENBERG
Est. 1898 & CO. PTY. LTD.
MOTOR & MACHINERY DEALERS



39 Yandilla Street Pittsworth Q 4356 • Phone: 07 4693 1322
Fax: 07 4693 1643 • www.lindenbergco.com.au



Beuaraba Living
Daniel Team Residents



Easter Wordsearch

Y O C T
 T R N O A R E D
 I N A N T E G O K R
 G O S M U Y T N O A S E
 A O I M N B N B O S A C
 O D G A I A S A N R D L B O
 T I R D S I A P L F L N
 E R C L A U F A O I R R E A
 H C H N O F N O E T S I R D
 O Y I D F F Y R R S D L
 S L E I L D O H N H N E L O A E
 H I N F L R D Y T W T Y T Y
 Y A D N U S I I O R S K T P
 T S P L A I B P L L S A A A L N
 T N E C R Y L F R K B E N O G M
 S Y E E N D C A S C I H D L S N D I
 Y A A E L B H E I O E N L S F C E I
 E T L H C N O H N A H I G A B E L T
 G L E Y A W C N D H E L S F A E T O
 M H U A A E O I N S G E O A L N A A
 O Y Y N K L E F E G A A A U Y A
 G O S O A N R T T G F H A E
 N N S T T U F H T I A I
 N E M O N D A Y

BASKET
 CHICKS
 EASTER
 MONDAY
 HOLIDAY

BUNNY
 EGG
 HUNT
 GOODFRIDAY
 DAFFODIL

LOLLIES
 SPRING
 BONNET
 MARCH
 LENT

CHOCOLATE
 FLOWERS
 SUNDAY
 APRIL

bernays

ESTABLISHED 1898

L A W Y E R S

Level 2, 516 Ruthven Street
Toowoomba Qld 4350

Phone (07) 4632 1266

Fax (07) 4638 4595

P.O. Box 31, Toowoomba

Direct email: dpower@bernays.com.au

email: bernayslegal@bernays.com.au

Visiting office:

132 Yandilla Street, Pittsworth

Ph: (07) 4693 1023



Phone 4693 1999

Cellars 4693 2216

E:admin@pittsworthhotelmotel.com

www.pittsworthhotelmotel.com



- *MOTEL UNITS
- *BISTRO *CELLARS
- *FUNCTION ROOM
- *TAB *KENO*POKIES
- *DRIVE THROUGH



The Statement of Rights

The Statement of Rights clearly identifies your rights when seeking or receiving aged care services. Under the Aged Care Act 2024, your provider and aged care workers are legally obliged to deliver services in line with these rights.



Autonomy and freedom of choice

I have the right to make my own choices – about my care, relationships, lifestyle and taking risks – with support if I want it.



Equitable access

I have the right to have my needs assessed in a way that works for me including having my cultural background, past trauma or cognitive conditions, such as dementia, respected.



Safe, quality care

I have the right to be treated with dignity and respect by experienced aged care workers who value my identity, culture, spirituality and diversity.



Privacy and confidentiality

I must have my privacy respected and my personal information kept confidential, and be in control of who this information is shared with.



Communication and complaints

I have the right to be informed in a way I understand and to raise concerns without fear of reprisal. My feedback must be dealt with fairly and promptly.



Support and social connections

I can stay connected to important people, pets and culture including independent advocates. As an Aboriginal or Torres Strait Islander I can stay connected to Country and Island Home.



For free, confidential and independent support call the Aged Care Advocacy Line 1800 700 600



OPAN | Older Persons Advocacy Network

Condamine Clothing

OPENING HOURS
MON-FRI 8:30AM-5:00PM
SATURDAY 8:30AM-12:00PM
SUNDAY - CLOSED

07 4693 2055




LADIES & MENSWEAR

- SLIPPERS
- SOCKS
- SINGLETS
- UNDERWEAR
- MENS PJ'S
- SKECHERS SHOES

Strengthened Aged Care Quality Standards



Find out more 
agedcarequality.gov.au/older-australians



Meals on Wheels
Queensland

Meals on wheels is a community Service to people who are frail aged, younger Disabled, their carers and community members. This service enables people to continue living comfortably in their own homes.

Volunteers deliver meals directly to homes.

Contact
0427 586 684

Inquires for Meals on Wheels

Remember this service is available to everyone to use.



DO SOMETHING GOOD WITH YOUR CONTAINERS AND DONATE TODAY.

Beuaraba Living is a 128-bed, award-winning aged care home located just 35 minutes southwest of Toowoomba, nestled in the heart of the rural Pittsworth community.



MEMBER NUMBER:
C10177138

BEUARABA LIVING PITTSWORTH LTD



•FRIENDLY •PROMPT •RELIABLE
Mobile: 0421 913 010
Twice Daily Toowoomba to Pittsworth

Bringing happiness to every day



Opportunity for you to show your Support with the Purchase of a BL Metal Lapel Pin.

Available from admin at a cost of \$5.

Bargain!

The residents do not live in our workplace – we work in their home.



BEUARABA LIVING

Pittsworth
Chiropractic Centre

Dr Karen M. Rock
Chiropractor
*Palmer University: U.S.A.
B.Sc. Canada*

82 Yandilla St, Pittsworth. 4356

Pb: 07 4693 2111

Tue & Thur 2pm-6pm

Wed 9.30am-1pm

Sat 8am-finish

www.pittsworthchiropractic.com.au

