



# PIKE TERRACE

Architectural Restrictions Handbook

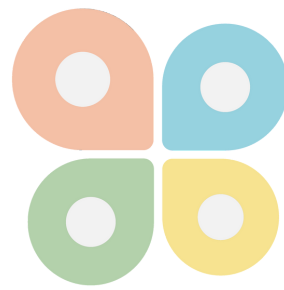
Developed By



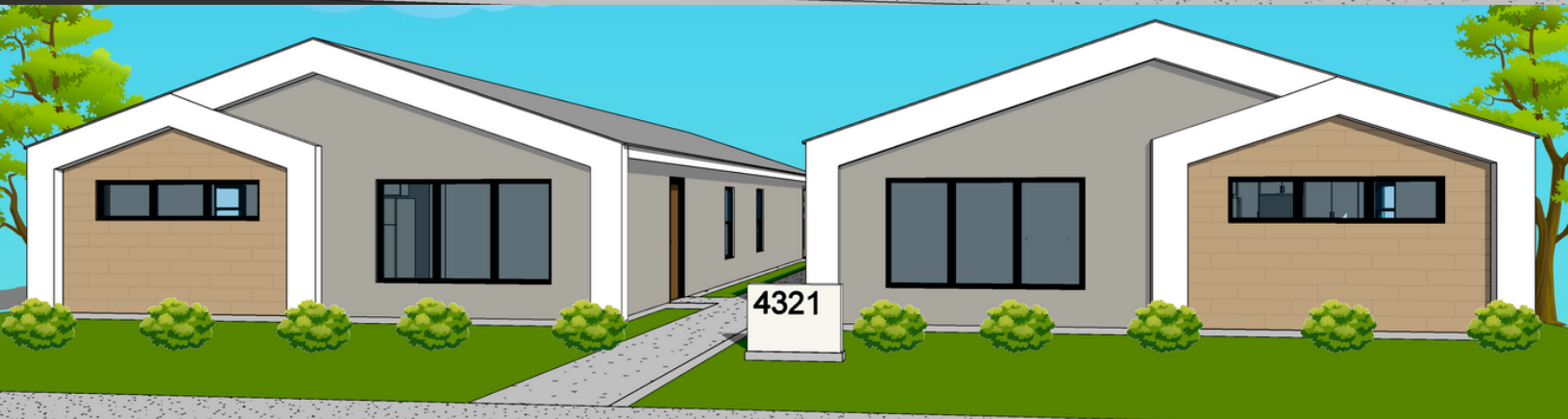
Designed With



Renderings



PIKE  
TERRACE



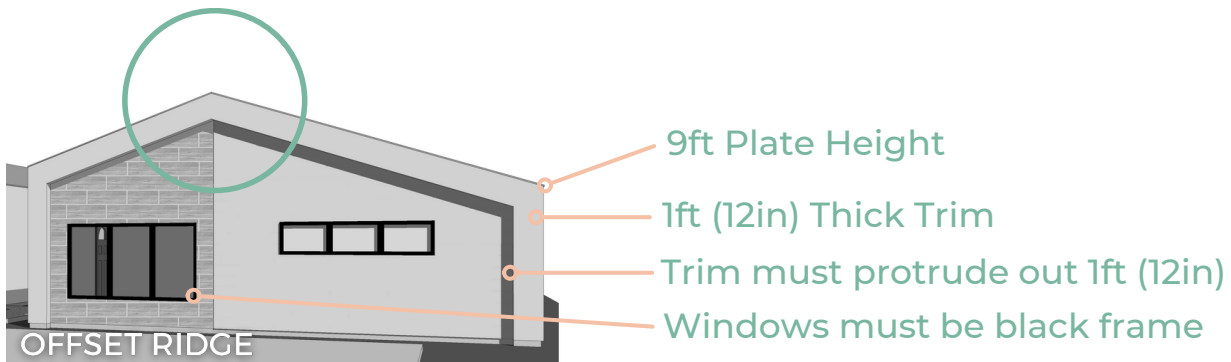
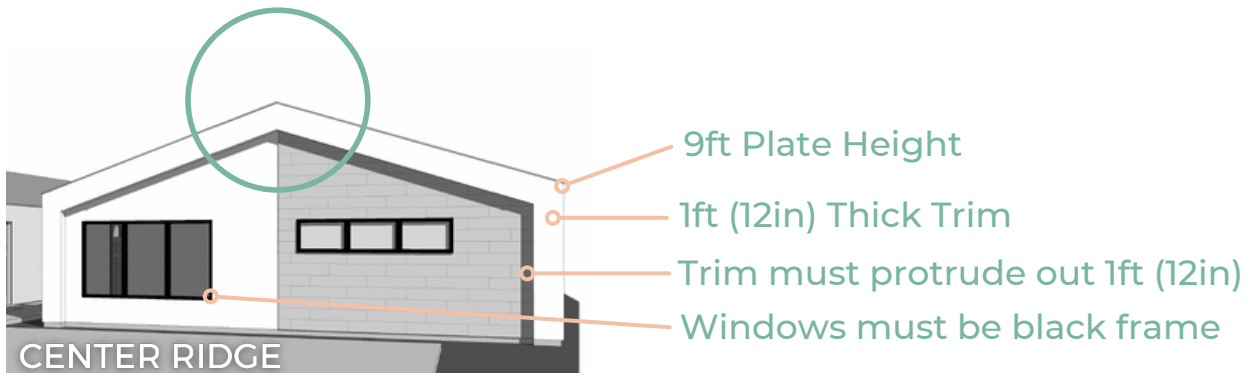
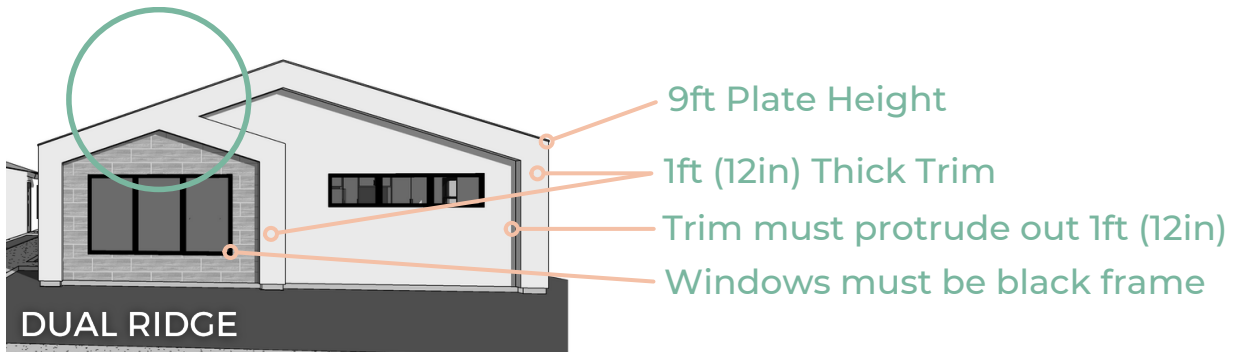
Developed By



Designed With



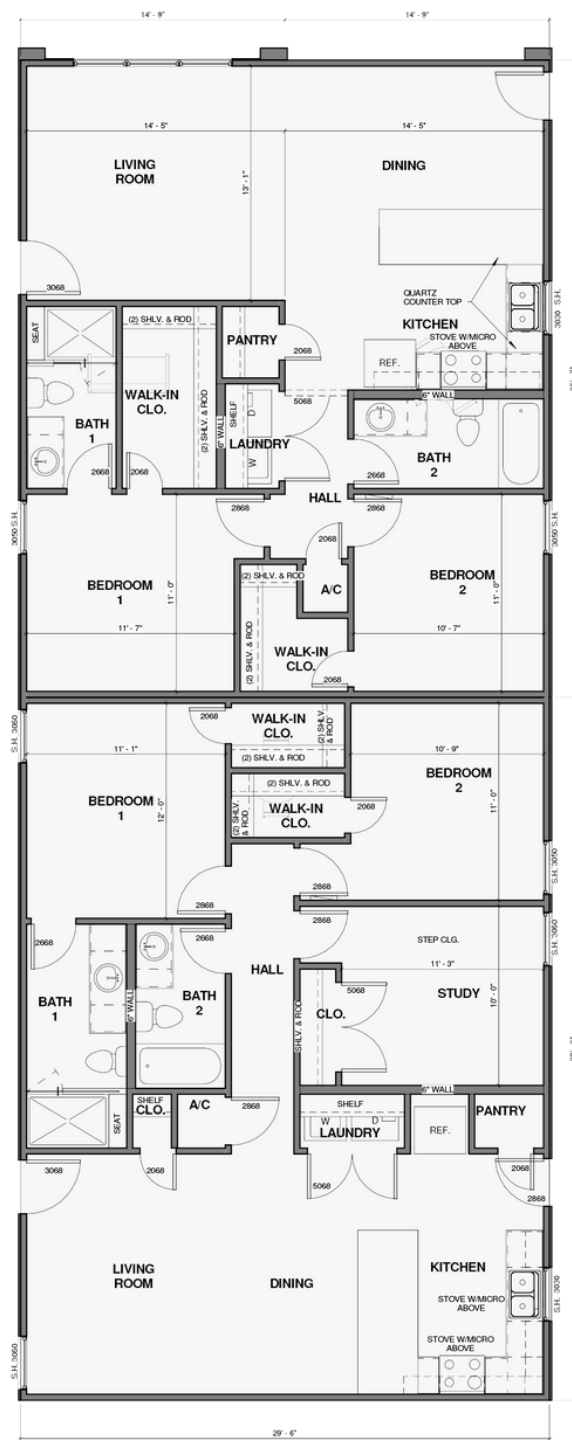
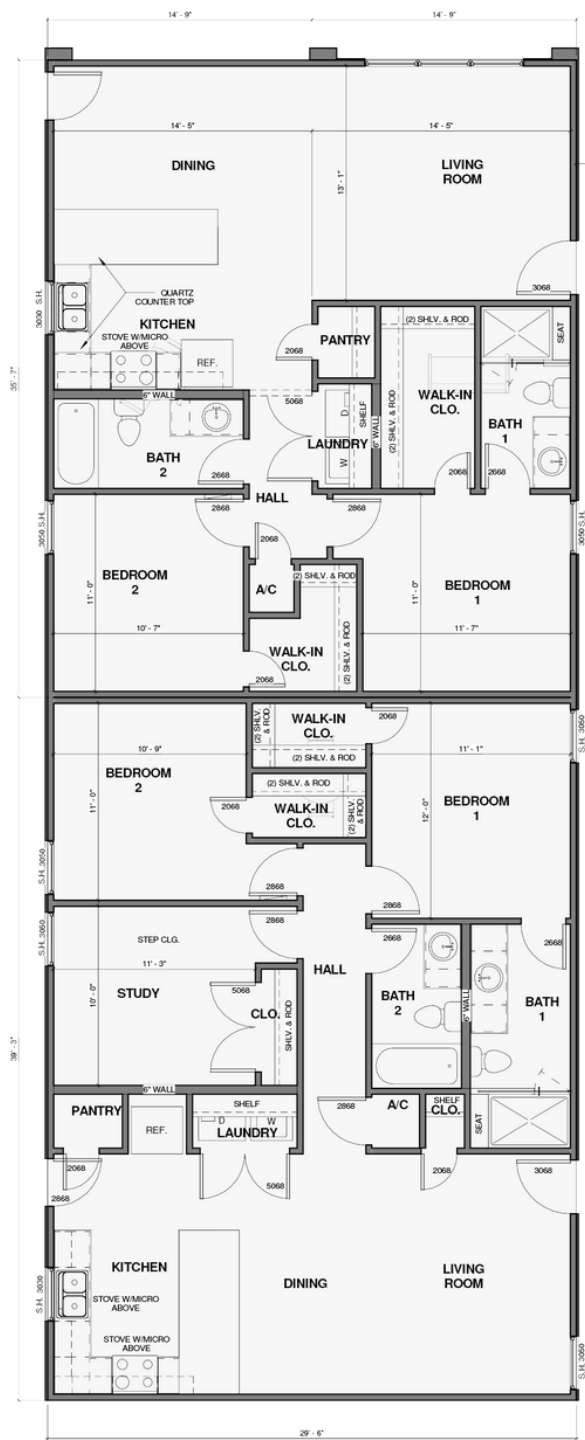
## Approved Ridges



**EACH BUILDING MUST BE 9ft PLATE HEIGHT**

**ALL RIDGES MUST PROTRUDE OUTWARD 1ft AND MUST BE 1ft WIDE**  
FASCIA WINDOWS SHOULD ALL BE BLACK FRAME, TILE FASCIA MUST BE HEBBLE

# Optional Floorplan



# Approved Stucco Color Chart

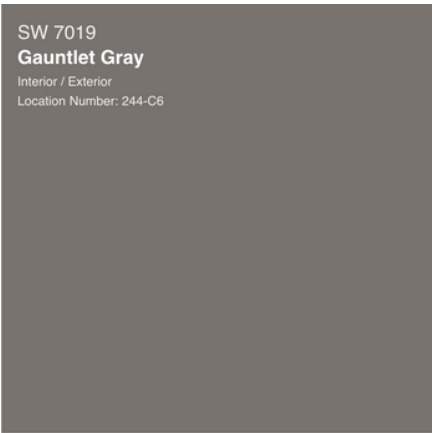


## Primary

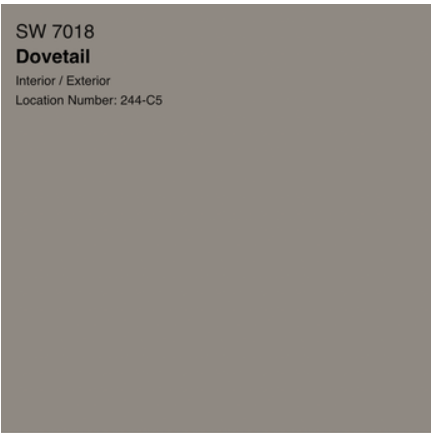


SW 7004 - Snowbound

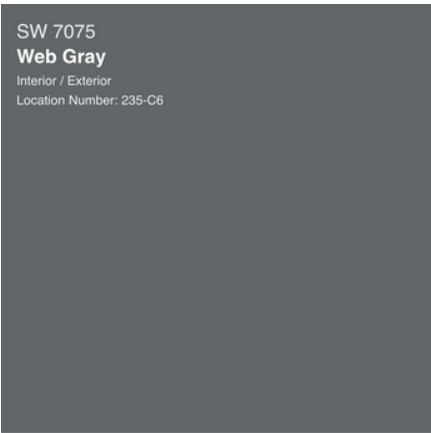
## Optional Secondary / Trim



SW 7019 - Gauntlet Gray



SW 7018 - Dovetail



SW 7075 - Web Gray



## Approved Fascia Tile Styles and Colors



Tile Suppliers TBD



Developed By



Designed With



## Approved Shingles



Oakridge Estate Gray

Developed By



Designed With



## Approved Outdoor Lighting



Hampton Bay - Outdoor Bulkhead Light  
Or modern cylindrical light in brushed steel

Fascia: optional 2-4 in recessed lights