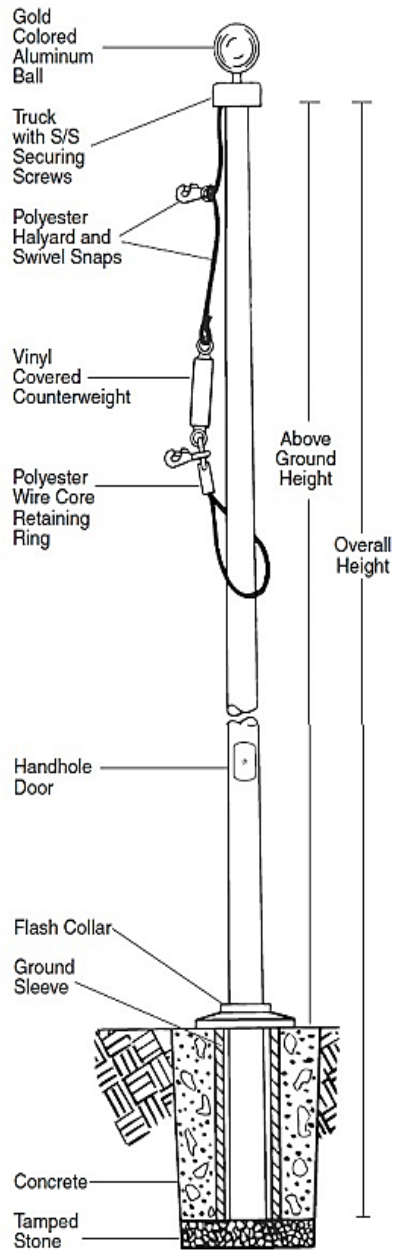
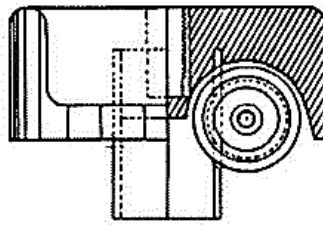


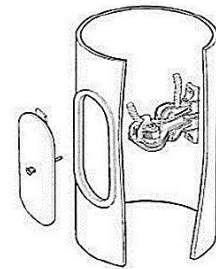
Fiberglass Flagpoles Internal Halyard 20I-40I



Fiberglass Internal Stationary Truck



Internal Cam Cleat and hand hole door



Model	20I	25I	30I	35I	40I
Above Ground Height	20'	25'	30'	35'	39'
Overall Height	23'	28'	33'	39'	43'
Butt Diameter	5.75"	6"	6.75"	7"	7"
Top Diameter	3"	3"	3"	3"	3"
Pole Weight (lbs.)	36	59	77	115	137
Shipping Weight (lbs.)	105	113	151	197	219
Ground Sleeve I.D.	8"	8"	8"	8"	8"
Ground Sleeve Length	3'	3'	3'	4'	4'
Ball Diameter	5"	5"	6"	6"	8"
Halyard	#10	#10	#10	#10	#10
Flash Collar	16"	16"	16"	16"	16"
Truck	F/G	F/G	F/G	F/G	F/G
Snaps	Brass	Brass	Brass	Brass	Brass
Standard Flag Size	4'x6'	4'x6'	5'x8'	5'x8'	6'x10'

Specifications

Provide a Fiberglass Reinforced Composite (FRC) Ground set flagpole Model # 20I as manufactured by PLP Composites, Fitzwilliam, NH 03447.

The flagpole shall have a mounting height of 20' and 3' below grade for an overall length of 23'. The butt diameter shall be 5.75" and the top diameter 3". The pole weight shall be approximately 36 lbs. and a total shipping weight of 105 lbs.

The flagpole shall be manufactured of fiberglass woven roving and polyester resin with 75% of the reinforcing fibers oriented in the axial plane for maximum stiffness and 25% in the radial plane for required hoop strength. Load calculations shall be based on AASHTO and NAAMM standards with the pole designed with a two to one (2:1) safety factor for 125 mph windspeed, unflagged, with a 1.3 gust factor.

The flagpole shall have an Entasis taper and shall be void of vertical mold seams.

The flagpole shall be sanded smooth and coated with a high gloss Aliphatic Polyurea coating system which provides extended UV protection and weatherability.

The color of the flagpole shall be:

Standard: white, bronze, black or other, as specified _____ (select one)

The flagpole shall be equipped with PLP standard fittings:

- A 5" gold anodized aluminum ball
- #10 (5/16") polyester halyard
- wire core retaining ring
- vinyl covered counterweight
- stainless steel and nylon internal cam cleat
- hand hole door with security system
- security driver to access hand hole
- a 16" composite flash collar
- a pair of brass snaps with vinyl covers
- Internal stationary single sheave fiberglass truck
- 3' x 8" fiberglass ground sleeve

Gorham Flag Center

376 Main St. – Gorham, ME 04038 - Phone: 207-839-4675

www.gorhamflag.com - flaginfo@gorhamflag.com

Specifications

Provide a Fiberglass Reinforced Composite (FRC) Ground set flagpole Model # 25I as manufactured by PLP Composites, Fitzwilliam, NH 03447.

The flagpole shall have a mounting height of 25' and 3' below grade for an overall length of 28'. The butt diameter shall be 6" and the top diameter 3". The pole weight shall be approximately 59 lbs. and a total shipping weight of 113 lbs.

The flagpole shall be manufactured of fiberglass woven roving and polyester resin with 75% of the reinforcing fibers oriented in the axial plane for maximum stiffness and 25% in the radial plane for required hoop strength. Load calculations shall be based on AASHTO and NAAMM standards with the pole designed with a two to one (2:1) safety factor for 125 mph windspeed, unflagged, with a 1.3 gust factor.

The flagpole shall have an Entasis taper and shall be void of vertical mold seams.

The flagpole shall be sanded smooth and coated with a high gloss Aliphatic Polyurea coating system which provides extended UV protection and weatherability.

The color of the flagpole shall be:

Standard: white, bronze, black or other, as specified _____ (select one)

The flagpole shall be equipped with PLP standard fittings:

- A 5" gold anodized aluminum ball
- #10 (5/16") polyester halyard
- wire core retaining ring
- vinyl covered counterweight
- stainless steel and nylon internal cam cleat
- hand hole door with security system
- security driver to access hand hole
- a 16" composite flash collar
- a pair of brass snaps with vinyl covers
- Internal stationary single sheave fiberglass truck
- 3' x 8" fiberglass ground sleeve

Gorham Flag Center

376 Main St. – Gorham, ME 04038 - Phone: 207-839-4675

www.gorhamflag.com - flaginfo@gorhamflag.com

Specifications

Provide a Fiberglass Reinforced Composite (FRC) Ground set flagpole Model # 30I as manufactured by PLP Composites, Fitzwilliam, NH 03447.

The flagpole shall have a mounting height of 30' and 3' below grade for an overall length of 33'. The butt diameter shall be 6.75" and the top diameter 3". The pole weight shall be approximately 77 lbs. and a total shipping weight of 137 lbs.

The flagpole shall be manufactured of fiberglass woven roving and polyester resin with 75% of the reinforcing fibers oriented in the axial plane for maximum stiffness and 25% in the radial plane for required hoop strength. Load calculations shall be based on AASHTO and NAAMM standards with the pole designed with a two to one (2:1) safety factor for 125 mph windspeed, unflagged, with a 1.3 gust factor.

The flagpole shall have an Entasis taper and shall be void of vertical mold seams.

The flagpole shall be sanded smooth and coated with a high gloss Aliphatic Polyurea coating system which provides extended UV protection and weatherability.

The color of the flagpole shall be:

Standard: white, bronze, black or other, as specified _____ (select one)

The flagpole shall be equipped with PLP standard fittings:

- A 6" gold anodized aluminum ball
- #10 (5/16") polyester halyard
- wire core retaining ring
- vinyl covered counterweight
- stainless steel and nylon internal cam cleat
- hand hole door with security system
- security driver to access hand hole
- a 16" composite flash collar
- a pair of brass snaps with vinyl covers
- Internal stationary single sheave fiberglass truck
- 3' x 8" fiberglass ground sleeve

Gorham Flag Center

376 Main St. – Gorham, ME 04038 - Phone: 207-839-4675

www.gorhamflag.com - flaginfo@gorhamflag.com

Specifications

Provide a Fiberglass Reinforced Composite (FRC) Ground set flagpole Model # 35I as manufactured by PLP Composites, Fitzwilliam, NH 03447.

The flagpole shall have a mounting height of 35' and 4' below grade for an overall length of 39'. The butt diameter shall be 7" and the top diameter 3". The pole weight shall be approximately 115 lbs. and a total shipping weight of 197 lbs.

The flagpole shall be manufactured of fiberglass woven roving and polyester resin with 75% of the reinforcing fibers oriented in the axial plane for maximum stiffness and 25% in the radial plane for required hoop strength. Load calculations shall be based on AASHTO and NAAMM standards with the pole designed with a two to one (2:1) safety factor for 125 mph windspeed, unflagged, with a 1.3 gust factor.

The flagpole shall have an Entasis taper and shall be void of vertical mold seams.

The flagpole shall be sanded smooth and coated with a high gloss Aliphatic Polyurea coating system which provides extended UV protection and weatherability.

The color of the flagpole shall be:

Standard: white, bronze, black or other, as specified _____ (select one)

The flagpole shall be equipped with PLP standard fittings:

- A 6" gold anodized aluminum ball
- #10 (5/16") polyester halyard
- wire core retaining ring
- vinyl covered counterweight
- stainless steel and nylon internal cam cleat
- hand hole door with security system
- security driver to access hand hole
- a 16" composite flash collar
- a pair of brass snaps with vinyl covers
- Internal stationary single sheave fiberglass truck
- 4' x 8" fiberglass ground sleeve

Gorham Flag Center

376 Main St. – Gorham, ME 04038 - Phone: 207-839-4675

www.gorhamflag.com - flaginfol@gorhamflag.com

Specifications

Provide a Fiberglass Reinforced Composite (FRC) Ground set flagpole Model # 40I as manufactured by PLP Composites, Fitzwilliam, NH 03447.

The flagpole shall have a mounting height of 39' and 4' below grade for an overall length of 43'. The butt diameter shall be 7" and the top diameter 3". The pole weight shall be approximately 137 lbs. and a total shipping weight of 219 lbs. *This 40X includes a 7' extension which is pre-installed prior to shipping. 3' of the extension is inserted into the butt end of the pole with 4' protruding to give you the overall length of 43'.

The flagpole shall be manufactured of fiberglass woven roving and polyester resin with 75% of the reinforcing fibers oriented in the axial plane for maximum stiffness and 25% in the radial plane for required hoop strength. Load calculations shall be based on AASHTO and NAAMM standards with the pole designed with a two to one (2:1) safety factor for 125 mph windspeed, unflagged, with a 1.3 gust factor.

The flagpole shall have an Entasis taper and shall be void of vertical mold seams.

The flagpole shall be sanded smooth and coated with a high gloss Aliphatic Polyurea coating system which provides extended UV protection and weatherability.

The color of the flagpole shall be:

Standard: white, bronze, black or other, as specified _____ (select one)

The flagpole shall be equipped with PLP standard fittings:

- A 8" gold anodized aluminum ball
- #10 (5/16") polyester halyard
- wire core retaining ring
- vinyl covered counterweight
- stainless steel and nylon internal cam cleat
- hand hole door with security system
- security driver to access hand hole
- a 16" composite flash collar
- a pair of brass snaps with vinyl covers
- Internal stationary single sheave fiberglass truck
- 4' x 8" fiberglass ground sleeve

Gorham Flag Center

376 Main St. – Gorham, ME 04038 - Phone: 207-839-4675

www.gorhamflag.com - flaginfo@gorhamflag.com