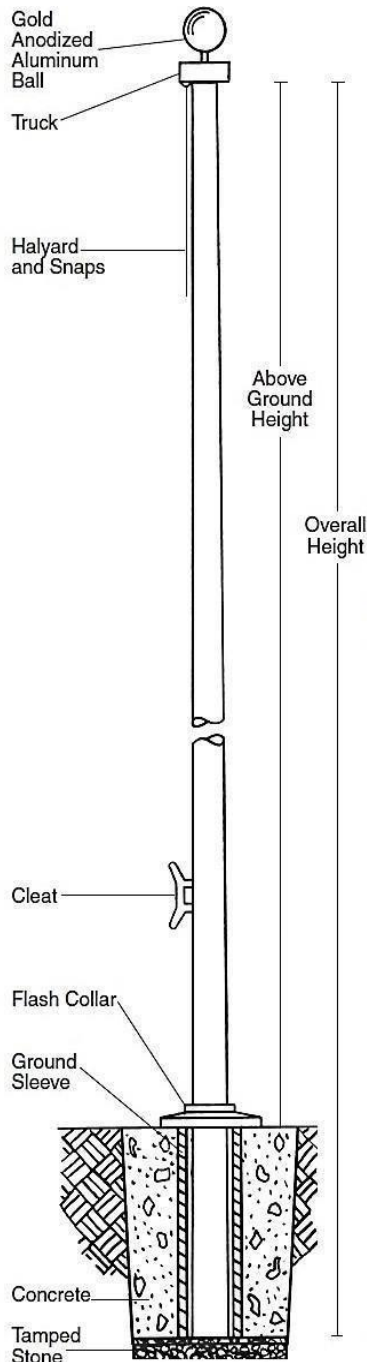
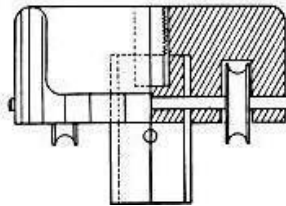




Fiberglass Flagpoles – External Halyard 20X-40X



Fiberglass Stationary External Truck



Model	20X	25X	30X	35X	40X
Above Ground Height	20'	25'	30'	35'	39'
Overall Height	23'	28'	33'	39'	43'
Butt Diameter	5.75"	6"	6.75"	7"	7"
Top Diameter	3"	3"	3"	3"	3"
Pole Weight (lbs.)	36	59	77	115	137
Shipping Weight (lbs.)	105	113	151	197	219
Ground Sleeve I.D.	8"	8"	8"	8"	8"
Ground Sleeve Length	3'	3'	3'	4'	4'
Cleat	8.5"	8.5"	8.5"	8.5"	8.5"
Ball Diameter	5"	5"	6"	6"	8"
Halyard	#10	#10	#10	#10	#10
Flash Collar	16"	16"	16"	16"	16"
Truck	F/G	F/G	F/G	F/G	F/G
Snaps	Brass	Brass	Brass	Brass	Brass
Standard Flag Size	4'x6'	4'x6'	5'x8'	5'x8'	6'x10'

Specifications

Provide a Fiberglass Reinforced Composite (FRC) Ground set flagpole Model # 40X as manufactured by PLP Composites, Fitzwilliam, NH 03447.

The flagpole shall have a mounting height of 39' and 4' below grade for an overall length of 43'. The butt diameter shall be 7" and the top diameter 3". The pole weight shall be approximately 137 lbs. and a total shipping weight of 219 lbs.

*This 40X includes a 7' extension which is pre-installed prior to shipping. 3' of the extension is inserted into the butt end of the pole with 4' protruding to give you the overall length of 43'.

The flagpole shall be manufactured of fiberglass woven roving and polyester resin with 75% of the reinforcing fibers oriented in the axial plane for maximum stiffness and 25% in the radial plane for required hoop strength. Load calculations shall be based on AASHTO and NAAMM standards with the pole designed with a two to one (2:1) safety factor for 125 mph windspeed, unflagged, with a 1.3 gust factor.

The flagpole shall have an Entasis taper and shall be void of vertical mold seams.

The flagpole shall be sanded smooth and coated with a high gloss Aliphatic Polyurea coating system which provides extended UV protection and weatherability.

The color of the flagpole shall be:

Standard: white, bronze, black or other, as specified _____ (select one)

The flagpole shall be equipped with PLP standard fittings:

- A 8" gold anodized aluminum ball
- #10 (5/16") polyester halyard
- 8.5" nylon cleat
- a 16" composite flash collar
- a pair of brass snaps with vinyl covers
- External stationary double sheave fiberglass
- 4' x 8" fiberglass ground sleeve

Exceptions:

Project: _____

Location: _____

Date: _____

Gorham Flag Center

376 Main St. • Gorham, ME 04038 • Tel: 207-839-4675 • Fax: 207-839-3952

www.gorhamflag.com

Email: flaginfo@gorhamflag.com