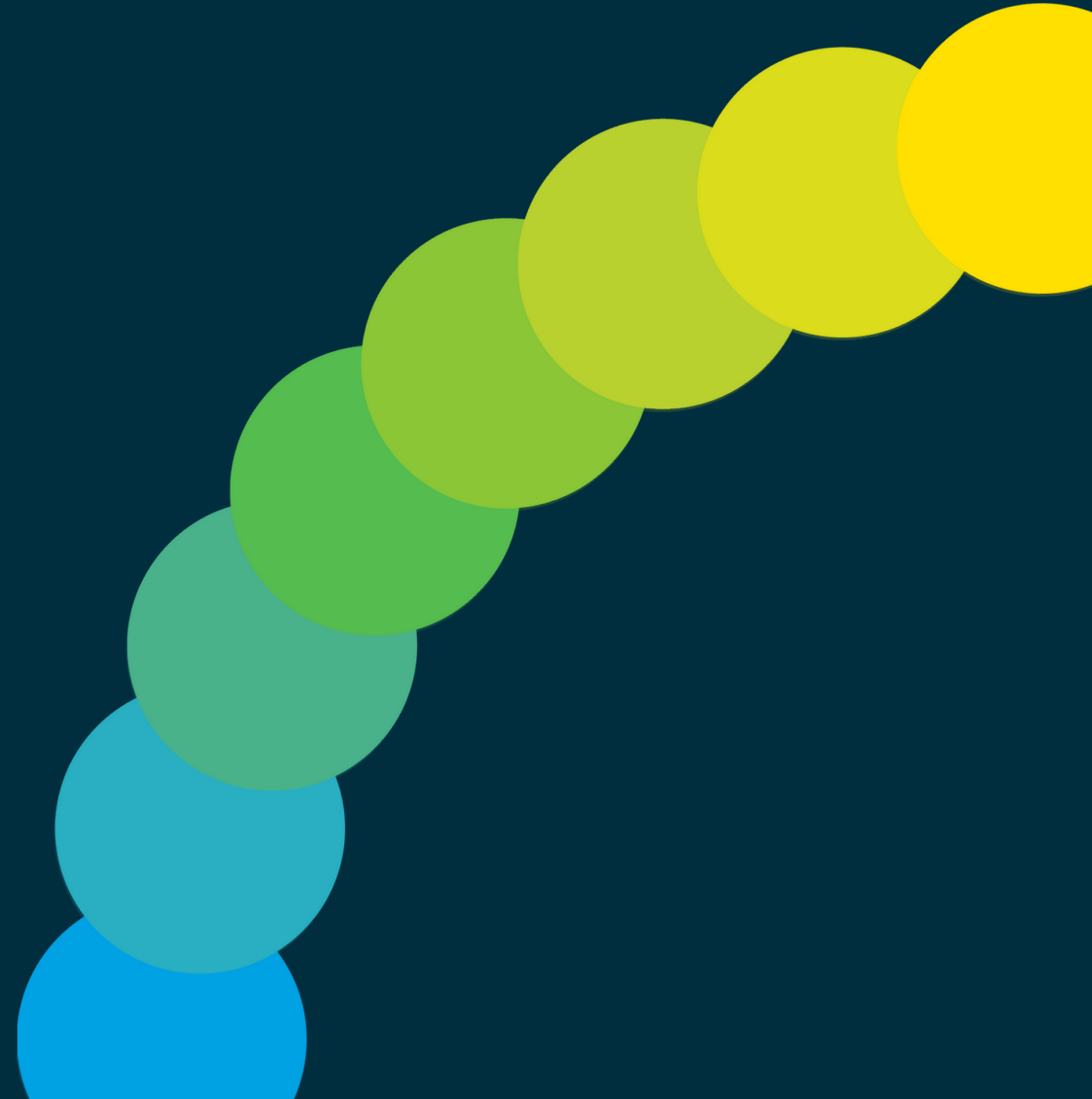


Welcome to State of the Data

Aug 27th, 2025

We invite you to turn off your video and remain on mute.





Introduction & Welcome

Rana Tarkenton

CEO, The Attainment Network



Staying Connected – Upcoming Events

San Luis Valley Partnership: A case study in employer engagement in rural areas

Thursday September 25, 2025

12:00 pm – 1:00 pm, Zoom

2025 L/Earner Voice Symposium

Thursday October 2, 2025

9:00 am 11:00 am, Zoom

Registration Link (also in the chat):

[The Attainment Network | Events](#)



Today's Agenda

- 10:00** Introduction & Welcome – Rana Tarkenton, COO, The Attainment Network
- 10:05** Agenda & OIT Intro – Stefan Richarz, Senior Director of Data, Evaluation, & Technology
- 10:10** SLDS – Heather MacGillivray & Brandi Wildfang, OIT
- 10:55** Better Data for Better Decisions
- 11:00** Breakout Rooms



State of the Statewide Longitudinal Data System (SLDS)



Dr. Heather MacGillivray

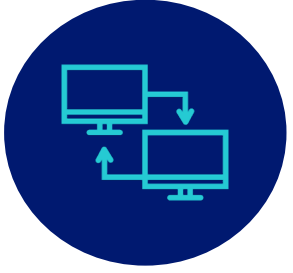
SLDS Manager, OIT

Brandi Wildfang

Chief Communications Officer, OIT

*A partnership of the Colorado Departments of Education, Early Childhood,
Higher Education, Labor and Employment, Economic Development and
International Trade and Office of Information Technology*

What is an SLDS?



Powerful data infrastructure to connect and report data across state agencies



Designed to provide a more complete picture of how education and workforce initiatives are impacting individuals and communities



Robust safeguards for privacy & security



HB24-1364 Background

The issue of Postsecondary workforce preparation and the “Big Blur” has been an area of focus for both K-12 and higher education. The Big Blur is erasing the dividing line between high school and college and opening opportunities for learners.

HB22-1215

Study of Expanding Extended High School Program

Established the Secondary, Postsecondary, and Work-Based Learning Integration Task Force

HB22-1349

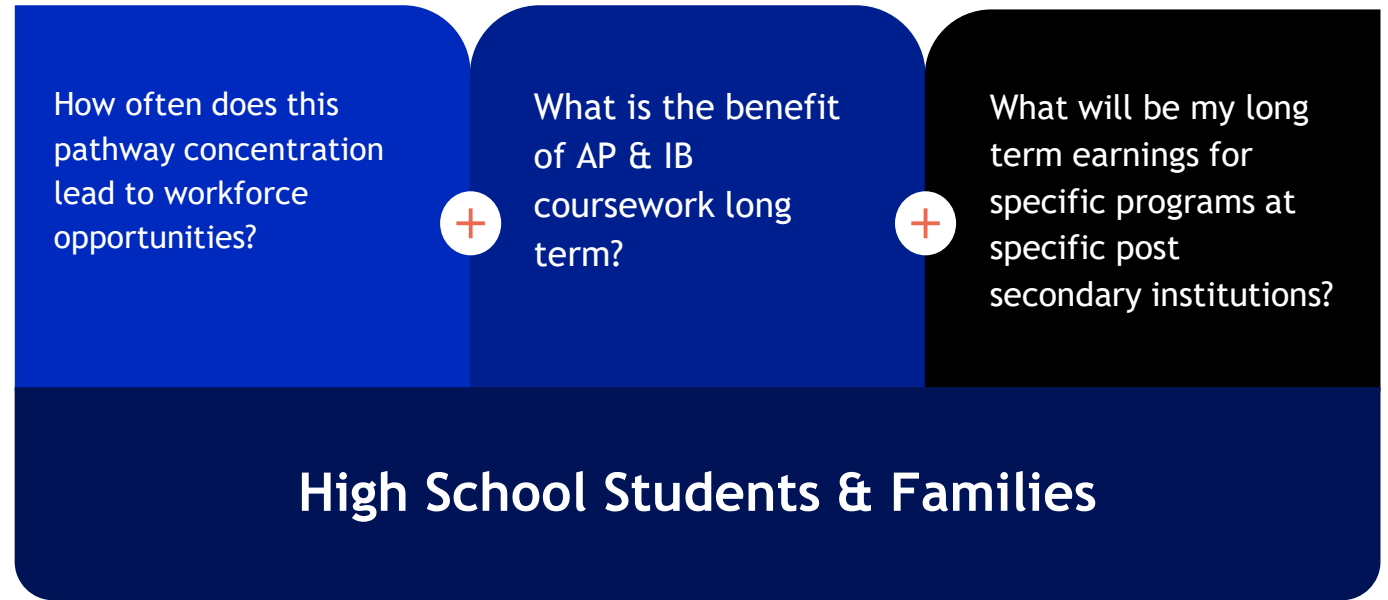
Postsecondary Student Success Data System

- Establishment of student success measures
- CDHE to create/maintain statewide student success data system



HB24-1364: What is the Benefit to Coloradans?

Provide information that supports students, families and practitioners to make informed decisions regarding education and training.



Creating A Unified Vision for Colorado's Data System

- **Governed by Experts:** OIT tapped national experts from the Education Commission for the States (ECS) led discussions to create the system's mission, vision and values.
- **Shared Leadership:** The SLDS Governance Board, composed of multiple state agencies, developed and approved these principles and continues to ensure the system aligns with HB24-1364.
- **Driving Adoption:** OIT and the Governance Board are collaborating to raise awareness and educate users to drive adoption of the new data system.
- **Data for Decisions:** The goal is to provide Coloradans with high-quality, trustworthy data that improves education and workforce outcomes.

The goal is to raise awareness, educate users and drive adoption of the new data system.



Governing Board Developed

VISION

Coloradans have access to high-quality, trusted, and integrated information to confidently make data-informed decisions so our individuals and communities thrive.

MISSION

The Colorado Statewide Longitudinal Data System securely connects data across state agencies and time, and serves as the source of understandable information that supports decision makers in their efforts to improve education and workforce outcomes and address opportunity gaps.



Who are the people of Colorado's SLDS?



Governance Board Members

Voting Status	Agency	Name
Voting Member	OIT	Amy Bhikha
Voting Member	CDEC	Stephanie Beasley
Voting Member	CDE	Susana Córdova
Voting Member	CDHE	Michael Vente
Voting Member	CDLE	Lee Wheeler-Berliner
Non-Voting Member	Gov Appointee - Governor's Office	Jess Kostelnik
Non-Voting Member	Gov Appointee - OSPB	Rebecca Tyus
Non-Voting Member	Gov Appointee - Member of the Public	Brian Eschbacher
Non-Voting Member	Gov Appointee - Member of the Public	Whitney LeBoeuf
Non-Voting Member	Gov Appointee - Member of the Public	Katie Zaback
Non-Voting Member	Attorney General's Office	Katie Nelson
Non-Voting Member	Career and Technical Education	Sarah Heath



Advisory Group Members

Sustainability	
Agency	Name
OIT	Katherine Hochevar
CDEC	Stephanie Stout Oswald
CDE	Danielle Ongart
CDHE	Michael Vente
CDLE	Amanda Neal
GOV	Jess Kostelnik
OSPB	Soumanetra Ghosh
AG	Jenna Zerylnick

Build & Implementation	
Agency	Name
OIT	TBD
CDEC	Sabina Andersson
CDE	Marcia Bohanan
CDHE	Michael Vente
CDLE	Naim Razzak
GOV	Lydia Rogers
OSPB	Rebecca Tyus
AG	Jud Cary



Who are the people of Colorado's SLDS?

Governor's Office of Information Technology Staffing		Position Type
Program Manager	Dr. Heather MacGillivray	Full time, permanent
Project Manager	Suzan Klatt	Part time, contract
Architect	Srini Cheemakurthi	Full time, term limited
Data Analyst	Currently Hiring	Full time, permanent
Data Engineer	Currently Hiring	Full time, term limited



How Does Colorado's SLDS Compare to Other States?

- All states have some form of SLDS (ECS 50 state analysis)
- Most exemplar SLDS incorporate data beyond P20W systems
- Almost all have a governing body that consists of data providers & community stakeholders
- Other states similar in size to CO - use either a high staffing or low staff-high contractor
- Most are housed in an independent entity that does not contribute its own data to the system
- Many are currently modernizing or considering how to modernize their tech stack
- Focus can be: Reporting-Driven, Research-Driven or Action Driven (DQC)

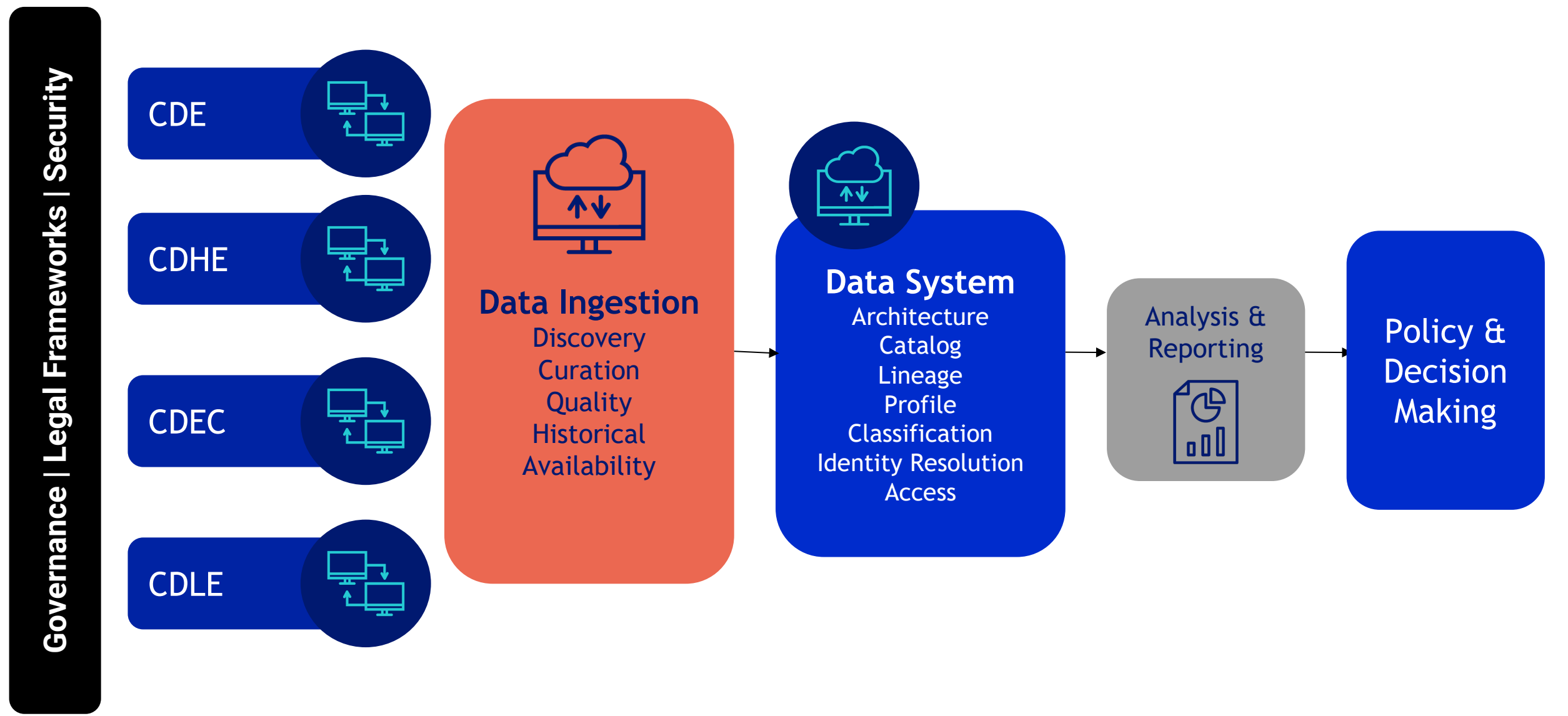
Current Staffing Estimates, by State, FY2025

	# of FTEs	# of Contractors	Total Personnel
KY	4	28*	32
MD	15	1	16
WA	13	2	15
CA	26	~30	56

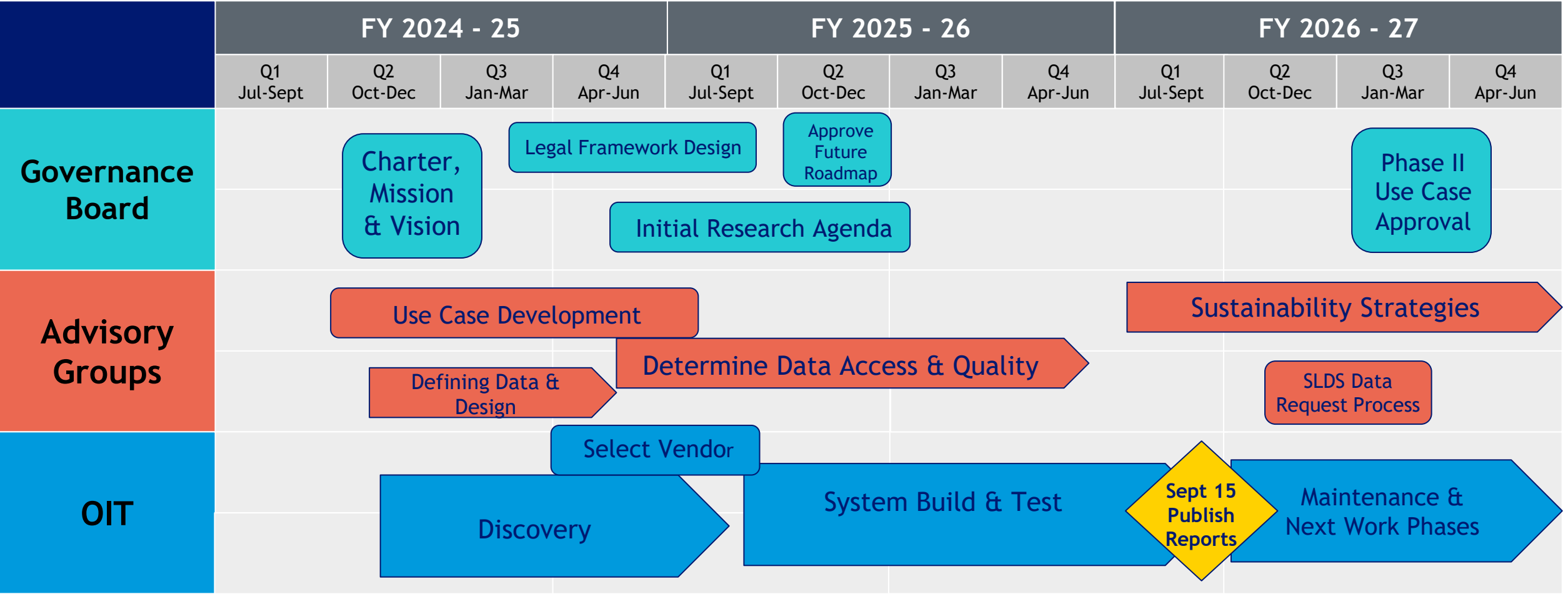
From Data Quality Campaign (DQC)



Colorado SLDS Development Process Phase I



Phase I Timeline



SLDS Milestones Since January



01

Staffing

- Hired the Program Manager & Data Architect

02

Governance

- Memorandum of Understanding created and signed
- Data Sharing Agreements created and signed
- Policies and Procedures co-constructed and approved
 - Includes process for requesting data from the SLDS

03

System Build

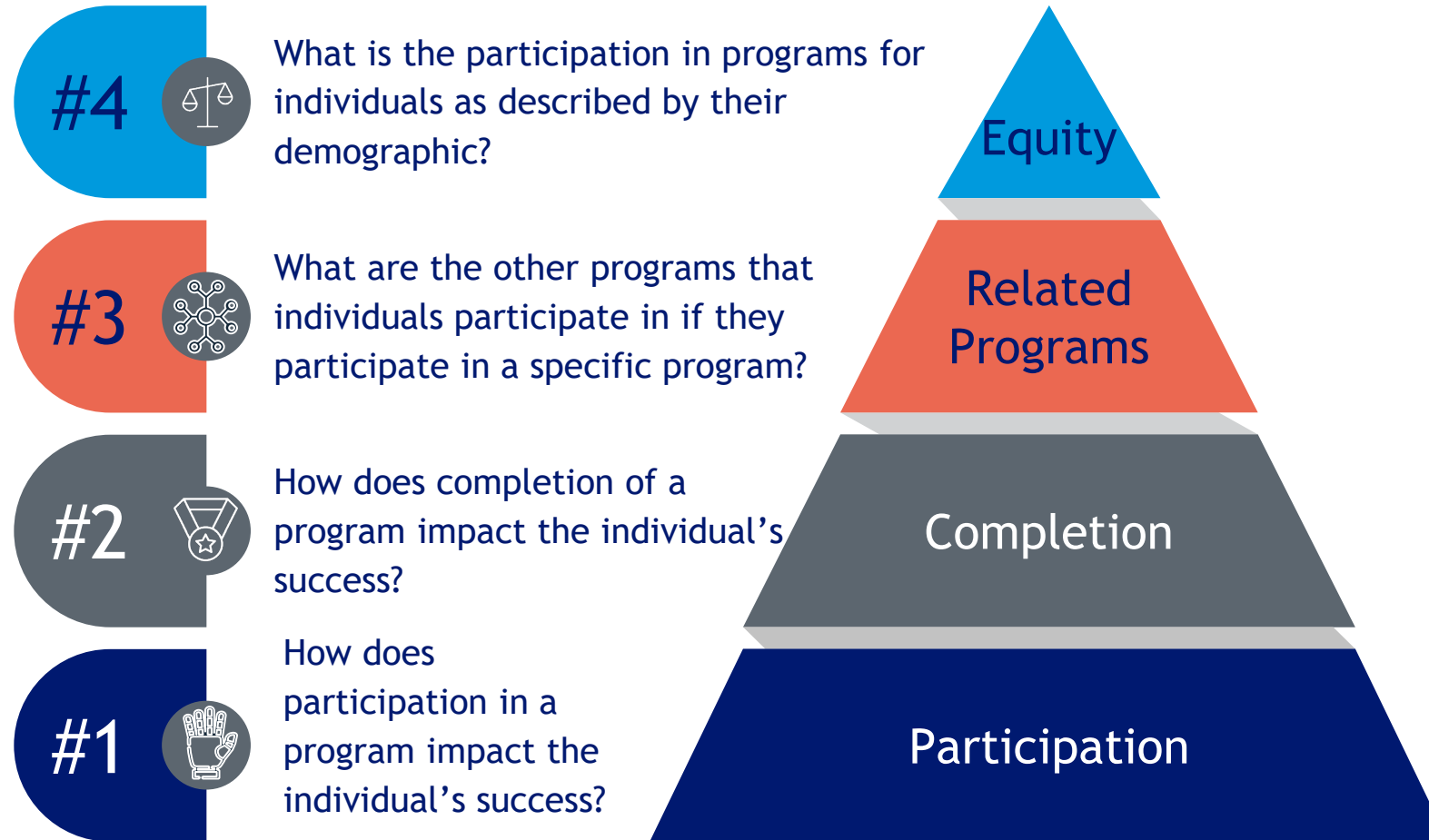
- Discovery and prioritization of programs aligned with use cases
- Development of preliminary list of data elements
- Vendor selected through RFP process

04

Communications

- Branding materials in development

Reminder: What are the Four Overarching “Use Cases”?

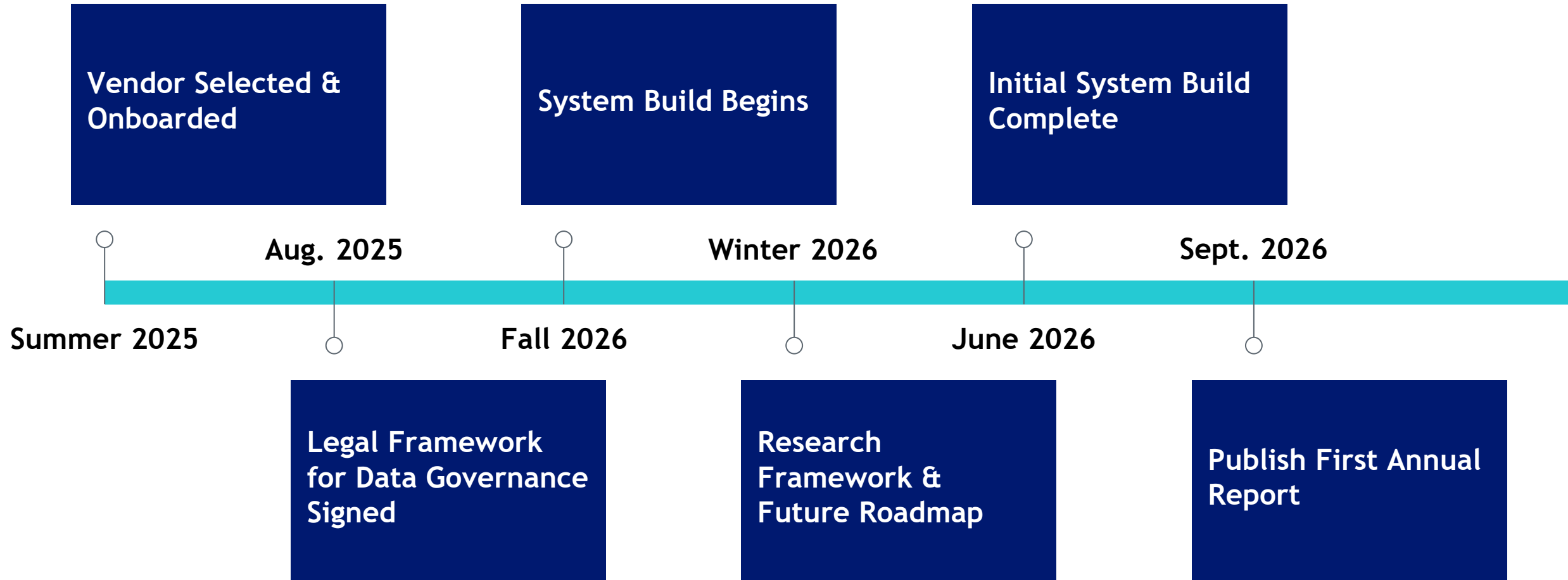


Phase I Use Cases

- **High School Experiences through Curricular Programs -> PSE & Wage outcomes**
 - [AP](#) coursework
 - [IB Diploma](#)
 - [Concurrent/Dual Enrollment](#)
 - [CTE](#)
 - [PTECH](#)
 - [ASCENT](#)
 - [CDIP](#) - Industry Credentials
- **Educational Attainment: -> Wage Outcomes**
 - High School
 - Certificates (<1, 1-2 years)
 - Certificates (Post Masters & Post Bachelor's/Baccalaureate)
 - College (2 year institution)
 - College (4 year institution)
 - Postgrad (Master's)
 - Postgrad (PhD)
- **Post Secondary Programs -> Wage Outcomes**
 - [Colorado Re-engaged Initiative \(CORE\)](#)
 - [Registered Apprenticeships](#)
 - [WIOA programs](#)



Upcoming Milestones in the SLDS



Next Big Thing: Building from Essential Questions

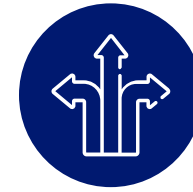


EQ20. Are students gaining access to quality jobs that offer economic mobility and security after high school or postsecondary training and education?



EQ14. Are students graduating from high school on time and successfully transitioning into further education, training, or employment?

EQ16. Are students matriculating to well-matched postsecondary institutions that successfully graduate their students with credentials of value?



EQ15. Are there quality pathways for students who pursue career training that lead to employment in quality jobs?

EQ19. Are students completing credentials of value after high school that set them up for success in the workforce?



EQ5. Are students demonstrating satisfactory academic progress, consistent attendance, and positive behavior to be considered on track in the early grades?

EQ8. Are students meeting reading and math benchmarks in grades 3 and 8?



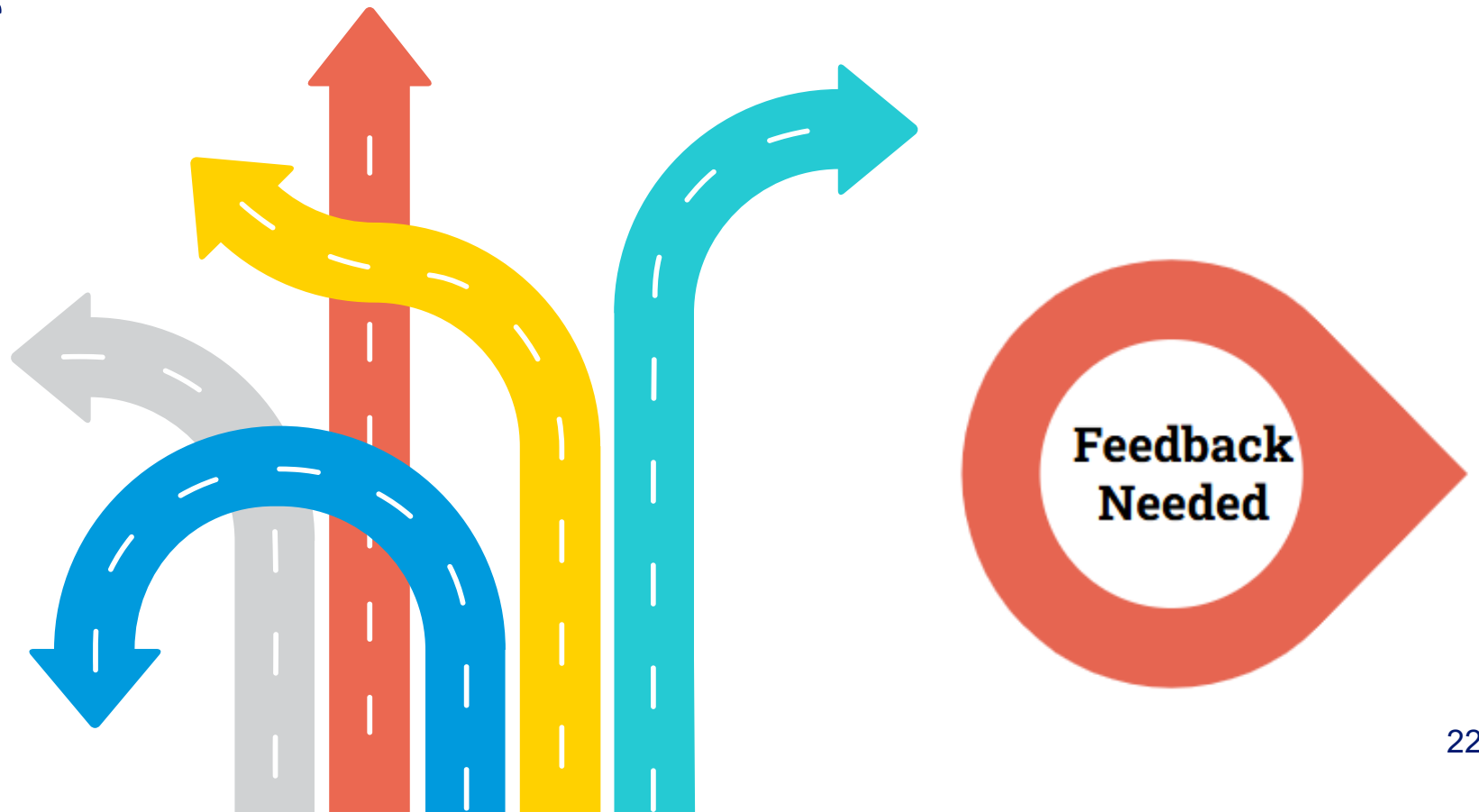
Next Big Thing: Developing a Future Roadmap

What is a Roadmap of an SLDS program?

A high level visual representation of the projects strategic direction.

How do we develop a Roadmap?

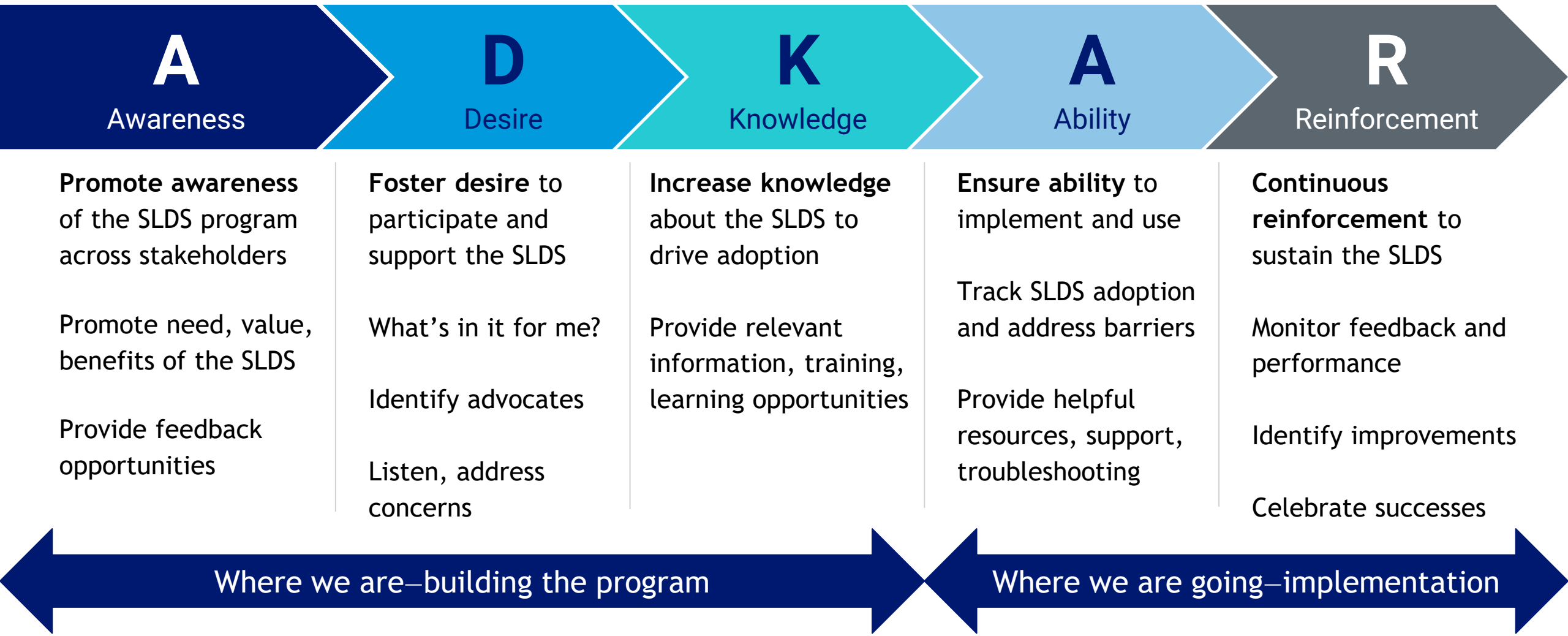
Design the strategy through a co-constructed research agenda.



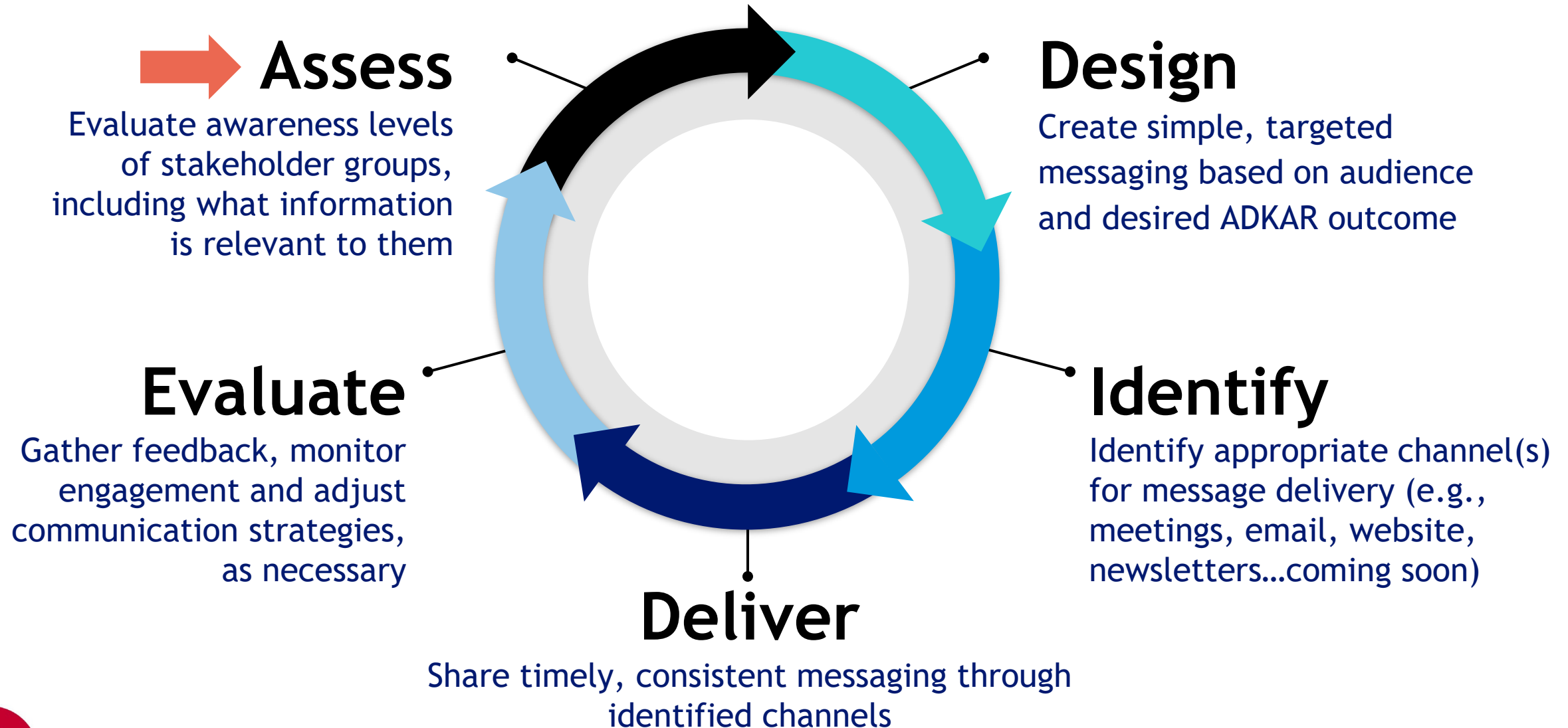
Branding & Communications



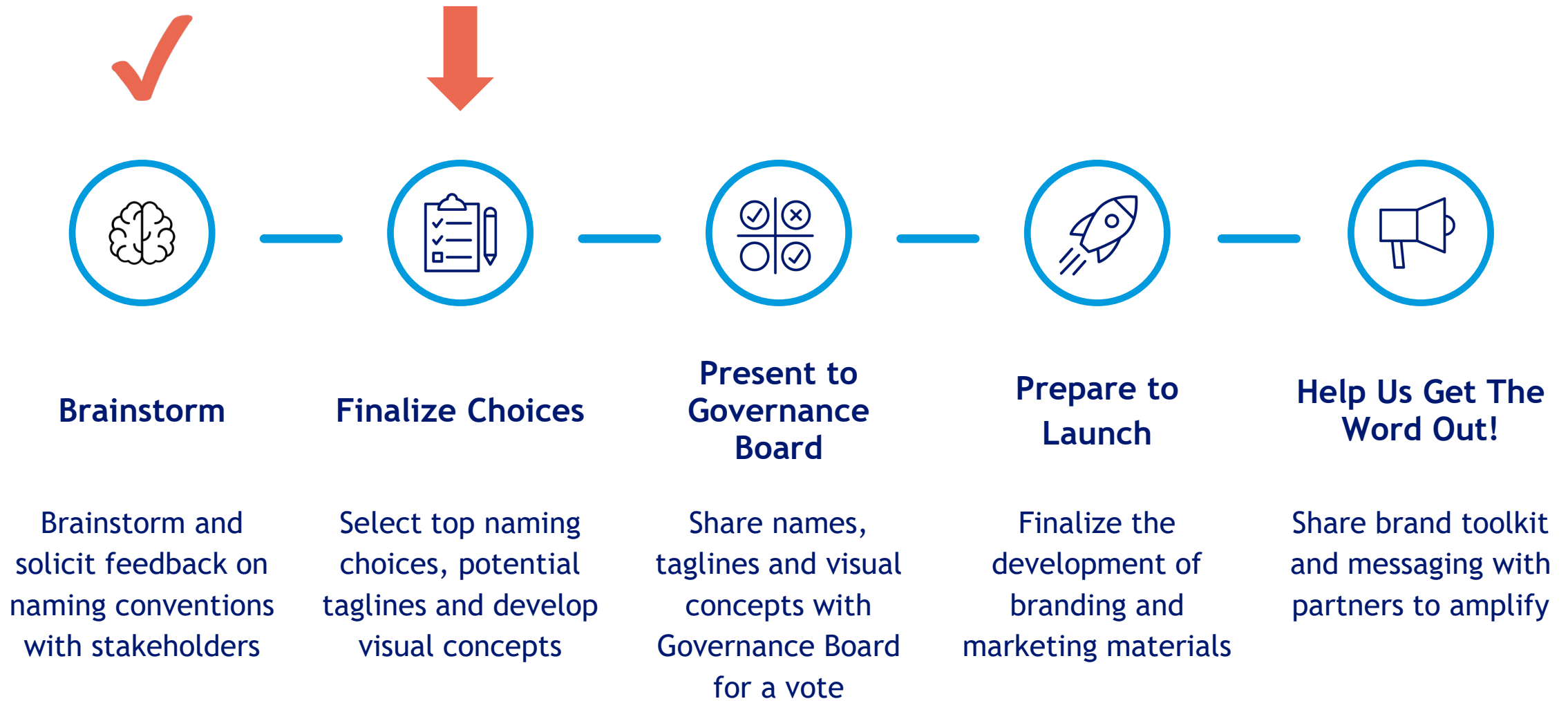
Communications Strategy & Planning



SLDS Communication Planning Process



Our Branding Journey



SLDS Webpage: oit.colorado.gov/slds



COLORADO
Governor's Office of
Information Technology

Select Language

▼

Search

Q

Home

Customer Support

Engage With Us

Standards, Policies & Guides

▼

Careers

Broadband

About Us

▼

[Home](#) > Statewide Longitudinal Data System (SLDS)

Statewide Longitudinal Data System (SLDS)

Statewide Longitudinal Data System (SLDS) ▼

SLDS Meeting Archive

Government Data Advisory Board (GDAB)

Purpose

The Statewide Longitudinal Data System (SLDS) was created in [HB24-1364](#) and is designed to bring together data from residents' educational and professional experiences. These data will allow us to better understand how to prepare students to be successful and to meet the workforce needs of the state.

SLDS Vision

Coloradans have access to high-quality, trusted, and integrated information to confidently make data-informed decisions so our individuals and communities thrive.

SLDS Mission

The Colorado Statewide Longitudinal Data System securely connects data across state agencies and time, and serves as the

Calendar

< > Aug 2025 – Apr 2026 ▼

26 AUG, TUE

28 AUG, THU

○ 11am SLDS Sustainability Advisory Board

8 SEP, MON

○ 8am SLDS- Build and Implementation Advisory Gro

11 SEP, THU

○ 11am SLDS Sustainability Advisory Board

15 SEP, MON

○ 8am SLDS- Build and Implementation Advisory Gro



**BETTER
DATA FOR
BETTER
DECISIONS
COALITION**

Data strengthens
communities,
fuels opportunity
and helps every
learner make more
informed choices.



ABOUT US

The Better Data for Better Decisions Coalition unites education and workforce organizations from across Colorado to support a statewide longitudinal data system that empowers informed decision-making.

We are committed to leveraging our shared expertise to advance a relevant, accurate, and user-centered system, ensuring it aligns with the goals and opportunities of K-12, postsecondary, and workforce sectors.

By supporting this system that reflects the needs of Colorado's students, educators, and employers, we aim to enhance outcomes and opportunities for all.



Upcoming Opportunities to Engage

31

- **Join us for our next meeting** Thursday, October 16 | 10am
- Want to **share resources on data** with your audiences?
 - We can **provide access** to many existing resources, and even **help tailor them** to your audiences!
- **Join us in this work** to support a system that reflects the needs of Colorado's students, educators, and employers. Contact Stefan for more information.

Complete the Questionnaire

The State of The Data Aug 27th,
2025 - Feedback and Questions



Breakout Rooms

1) Feedback on the Future Road Map

with Heather

1) Comms & Engagement

with OIT & BDBD Comms

2) Better Data for Better Decisions

with Stefan



Thank you!

