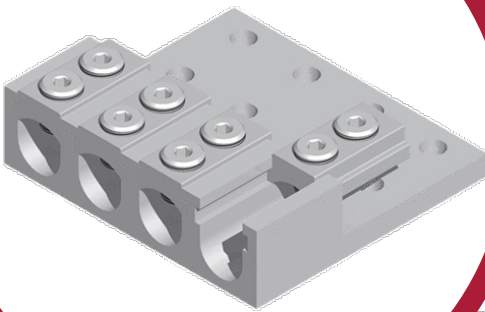
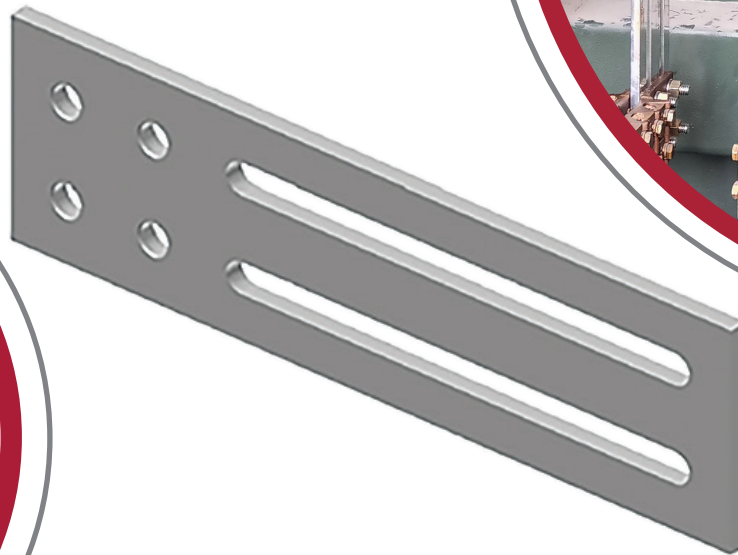
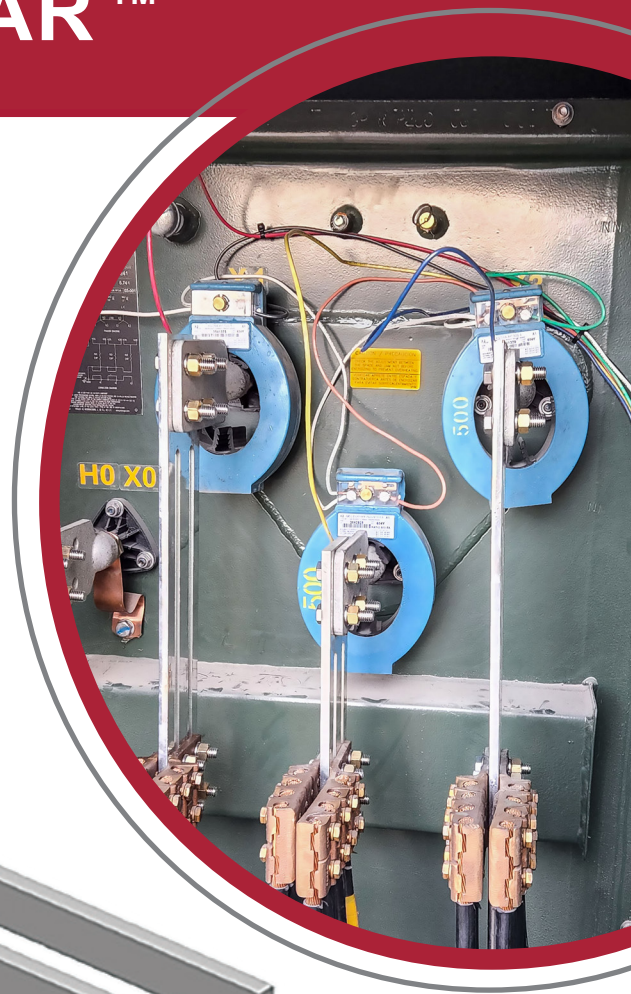


EXTENSION BAR™

- **Catalog# 9021182** -12"- (8" Extension Length)
- **Catalog# 902166** - 14.5"- (10.5" Extension Length)
- **Catalog# 9021166** -16"- (12" Extension Length)
- **Catalog# 9021161** -18"- (14" Extension Length)
- **Catalog# 9021153** -24"- (20" Extension Length)
- **Catalog# 9021176** -28"- (24" Extension Length)
- Copper Construction
- Electro-Tin plated to inhibit corrosion providing low contact resistance
- Slotted for flexible height adjustment
- NEMA bolt hole spacing of 1-3/4 "
- 1500 Amps



UT-TRANSFORMER LUGS™ HEAVY DUTY 750-1000

- **Catalog# UTLH750-84** - Wire Range 750-1/0 - Conductor Ports 4
- **Catalog# UTLH750-106** - Wire Range 750-1/0 - Conductor Ports 6
- **Catalog# UTLH1000-84** - Wire Range 1000-350 - Conductor Ports 4
- **Catalog# UTLH1000-126** - Wire Range 1000-350 - Conductor Ports 6
- Suitable for use with copper or aluminum conductors
- Manufactured from high strength, high conductivity aluminum alloy
- Set Screws are tin-plated and waxed for corrosion protection and torque consistency

Many other configurations available. Please contact the distributor or agent for your needs.

Fastening Kit

- **K45-9227:** 1/2"-13 X 2" SS BOLT KIT INCLUDING
- **K47-9022:** 1/2"-13 X 2 1/2" SS BOLT KIT INCLUDING
 - (4) BOLTS
 - (8) SS WASHERS
 - (4) SS BELLEVILLE WASHERS
 - (4) SILICON BRONZE NUTS

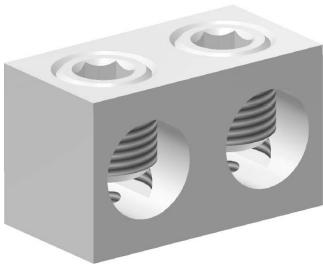


Proudly Engineered,
Designed, and Manufactured in the U.S.A.

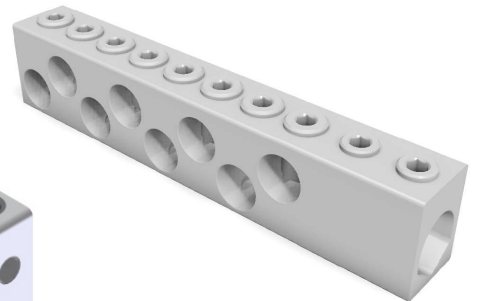
P.O. Box 908, Lebanon, MO 65536
417-532-7121 • www.DurhamUSA.com

C-LINE CONNECTORS™

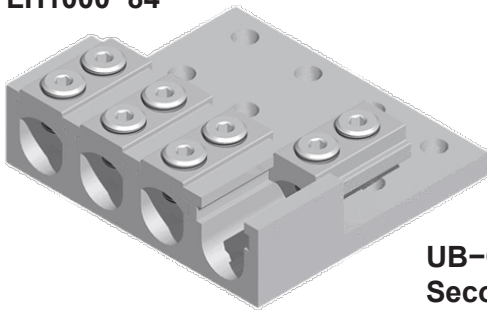
Neutral Bar
Connectors
BC0-X



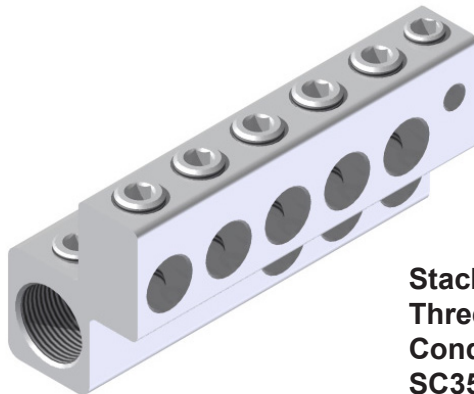
UB-Secondary
Stud Mounted
Transformer
Connectors
UBN35058-6



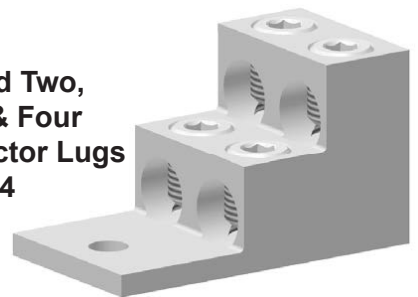
UT-Transformer Lugs-Heavy
Duty Lay-In 600-1000
UTLH1000-84



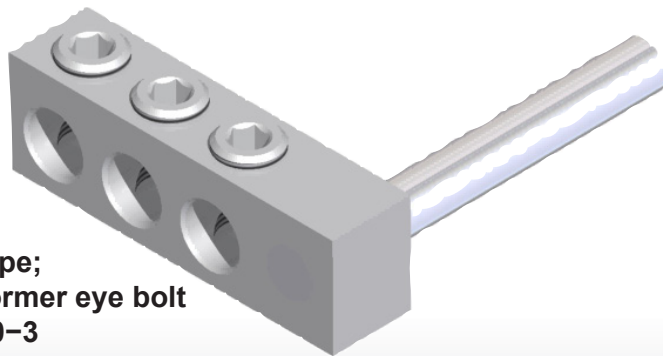
UB-Compact
Secondary Stud Mounted
Transformer Connectors
UBCS3501-53SL



Stacked Two,
Three & Four
Conductor Lugs
SC350-4



Pole Type;
Transformer eye bolt
PBP350-3



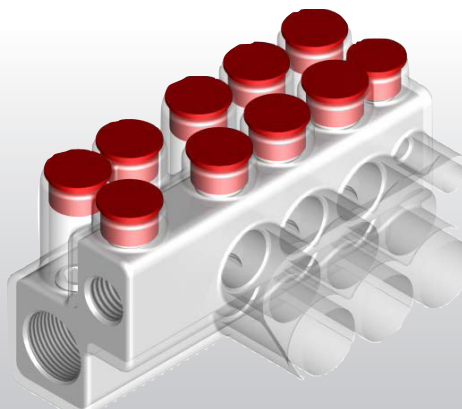
HD Two Conductor
Lugs-Two-Hole Tang
TC250A-2N



HD Single Conductor
Lugs-Two Hole Tang
TC250A



Transformer Lugs;
Stud Mount Cover
Options
UBCS500-33SLE
Option "E" for Encapsu-
lated



- Suitable for use with copper or aluminum conductors
- Manufactured from high strength, high conductivity aluminum alloy
- Set Screws are tin-plated and waxed for corrosion protection and torque consistency



Proudly Engineered,
Designed, and Manufactured in the U.S.A.

P.O. Box 908, Lebanon, MO 65536
417-532-7121 • www.DurhamUSA.com