



TSX-V: SXL

SLAM Exploration Ltd

**Jake Lee Gold Project
New Brunswick, Canada**

March, 2024



TSX-V: SXL

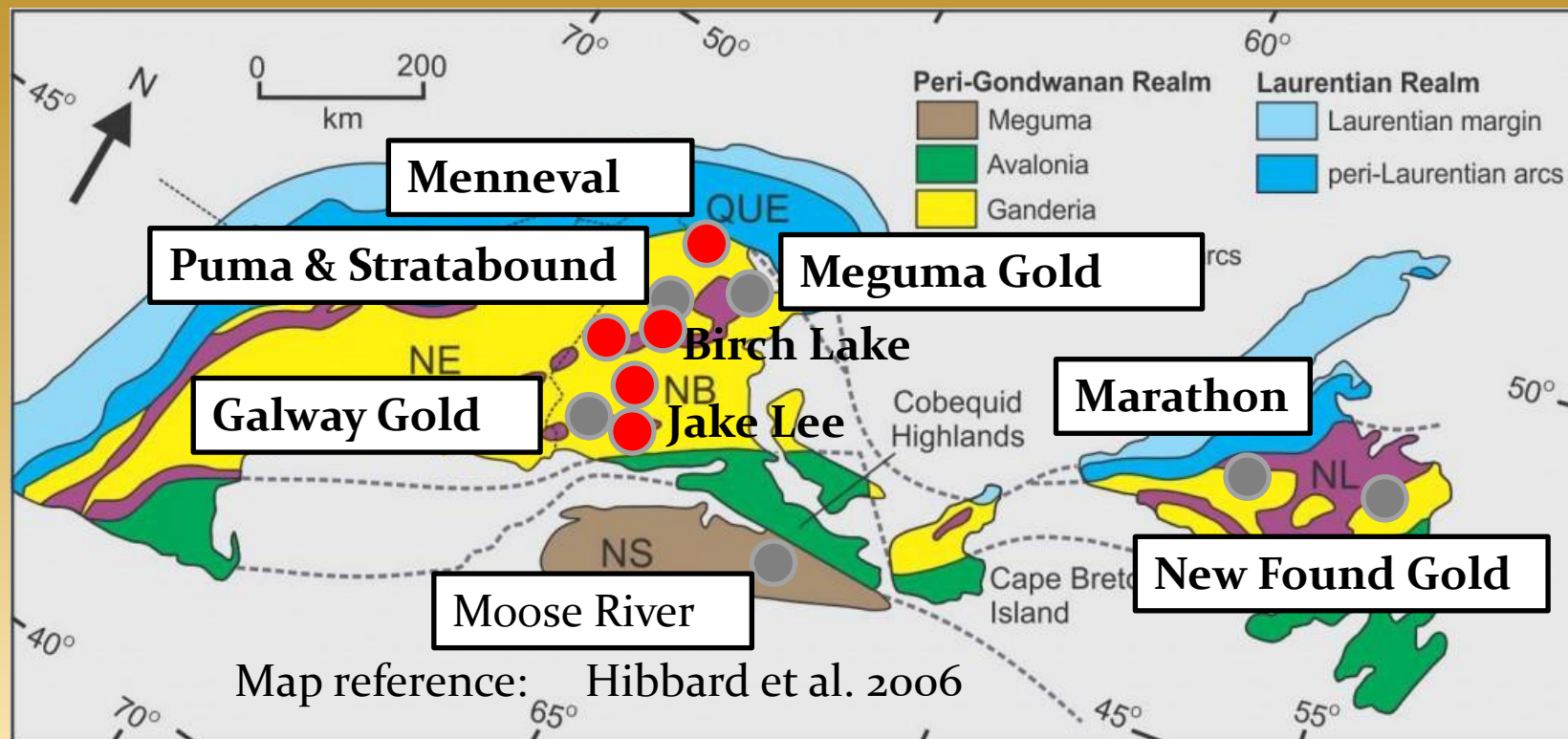
Cautionary Statement

Except for the statements of historical fact contained herein, certain information presented constitutes "forward-looking statements" within the meaning of the United States Private Securities Litigation Reform Act of 1995. Such forward-looking statements, including but not limited to, those with respect to potential expansion of mineralization, future plans for resource estimation and exploration and potential mining method involve known and unknown risks, uncertainties and other factors which may cause the actual results, performance or achievement of Slam Exploration Ltd. to be materially different from any future results, performance or achievements expressed or implied by such forward-looking statements. There can be no assurance that such statements will prove to be accurate as actual results and future events could differ materially from those anticipated in such statements. SLAM disclaims any intention or obligation to update or revise any forward-looking statements, whether as a result of new information, future events or otherwise. Accordingly, readers should not place undue reliance on forward-looking statements.



TSX-V: SXL

APPALACHIAN GOLD – NB-NS-NL



● SLAM Gold Property

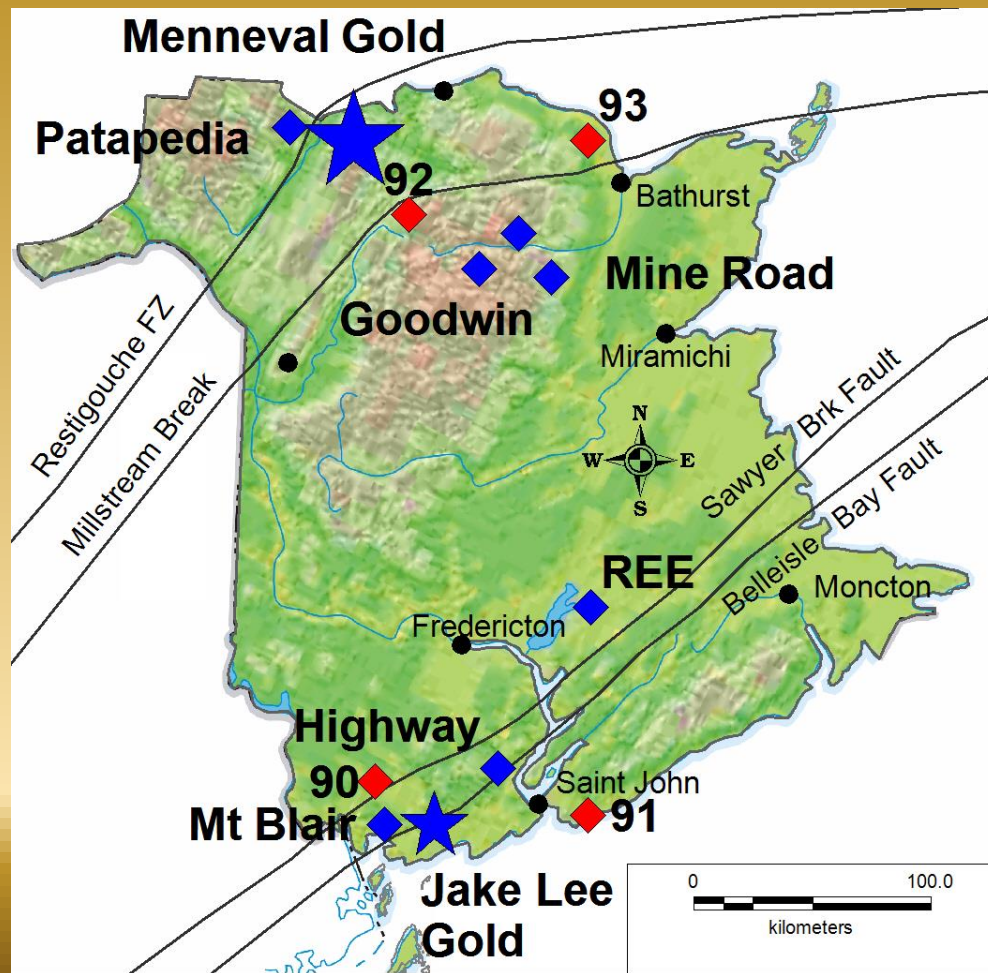
● Other Gold Companies



TSX-V: SXL

NEW BRUNSWICK PROJECTS

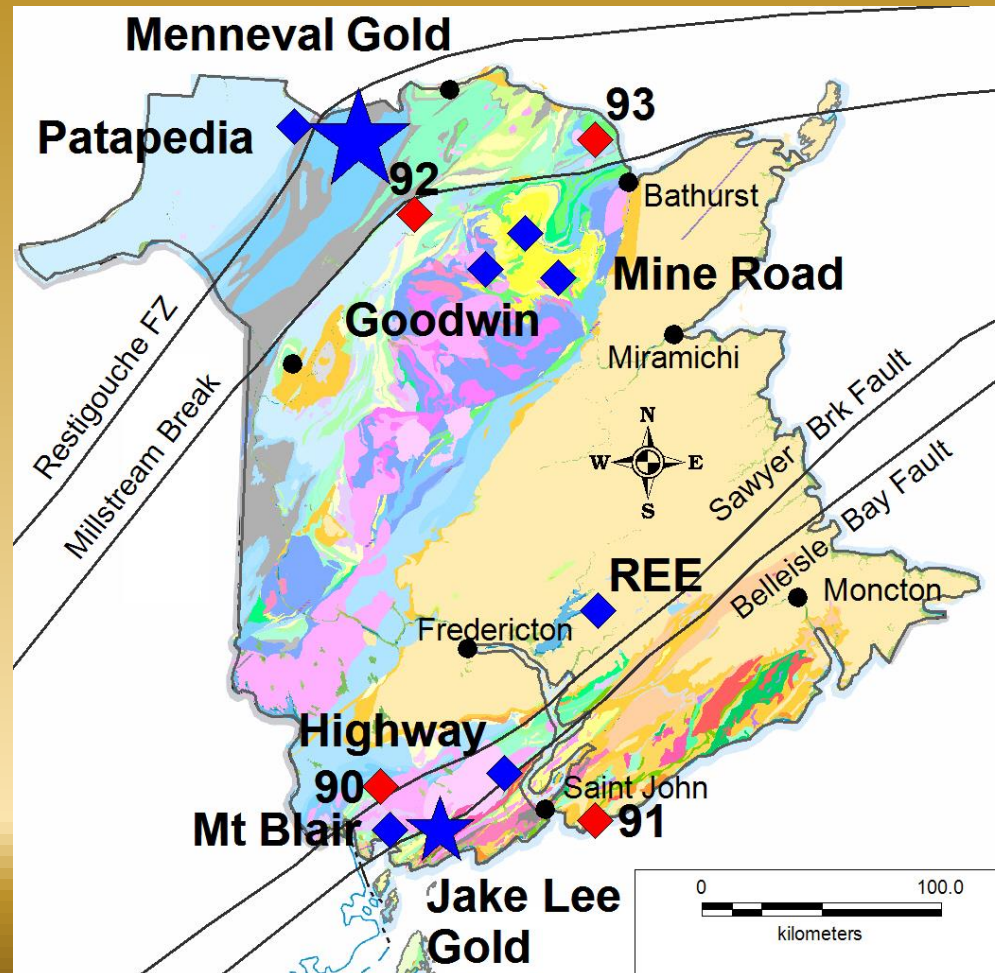
1. MENNEVAL GOLD
2. JAKE LEE GOLD
3. MT BLAIR GOLD
4. HIGHWAY COBALT COPPER
5. MINE ROAD COPPER ZINC
6. GOODWIN COPPER NICKEL
7. A'HEARN ZINC SILVER
8. CUMBERLAND REE
9. PATAPEDIA COPPER SILVER





TSX-V: SXL

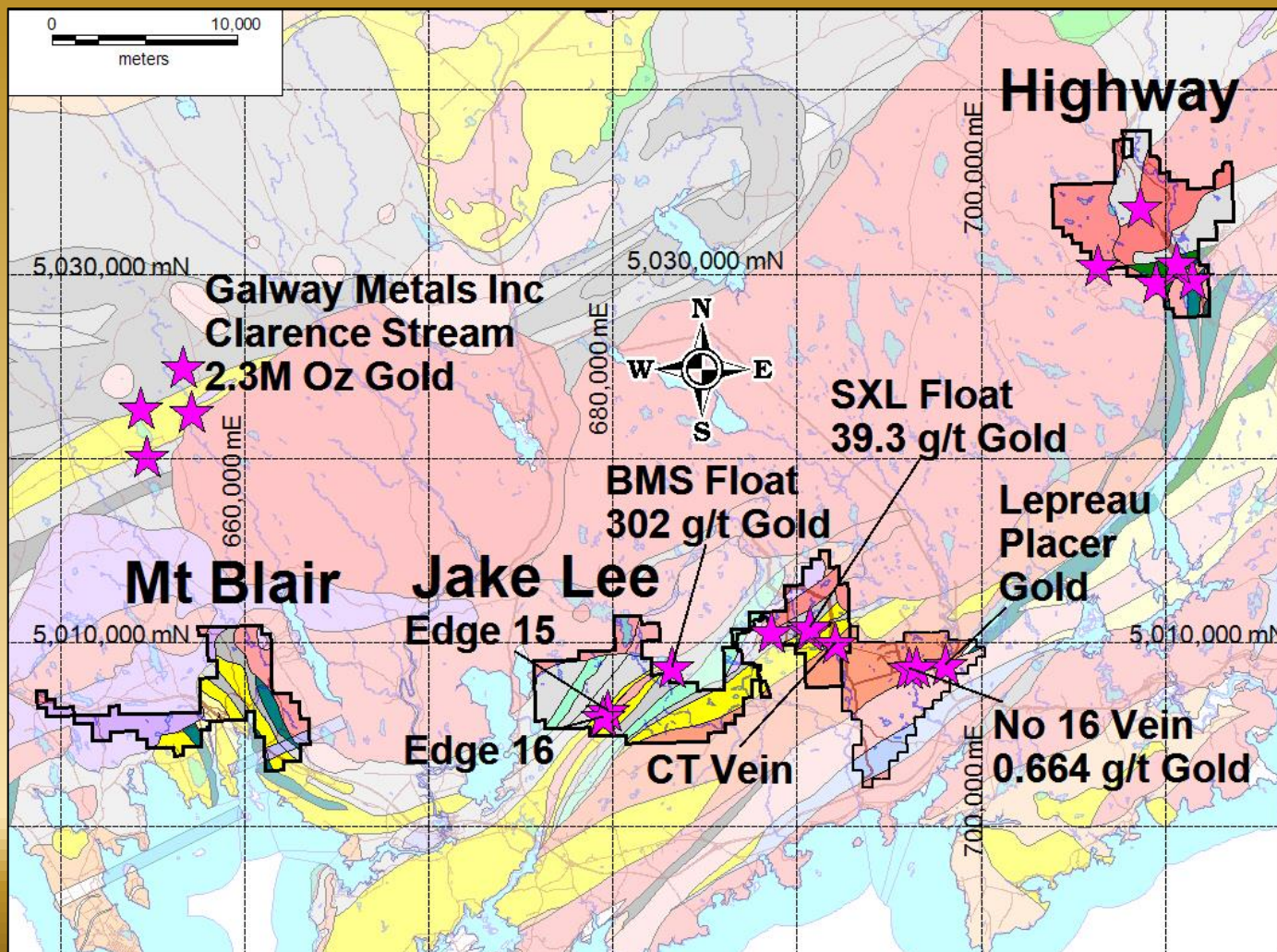
New Brunswick Geology





TSX-V: SXL

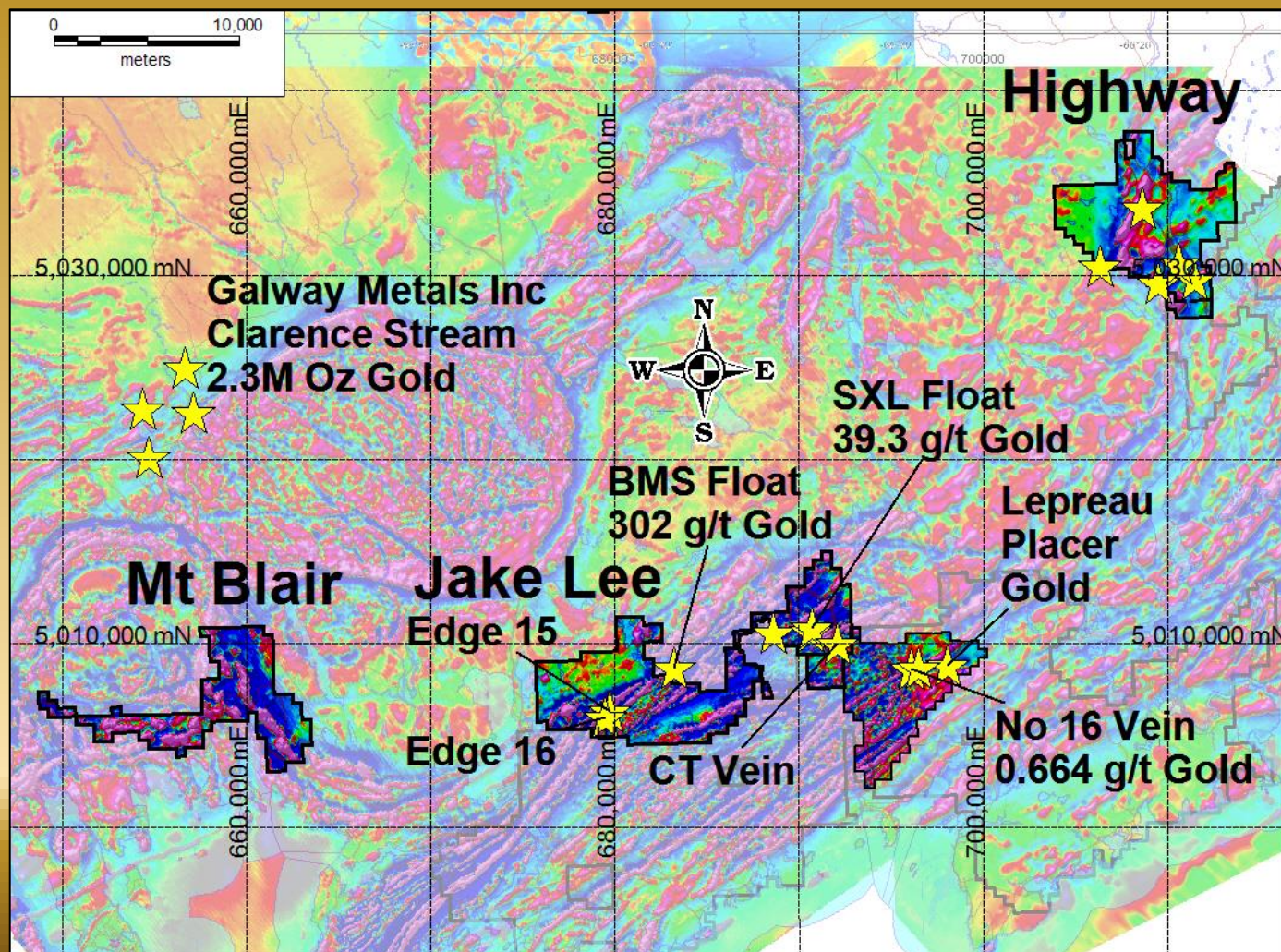
Mineral Claims - SW New Brunswick





TSX-V: SXL

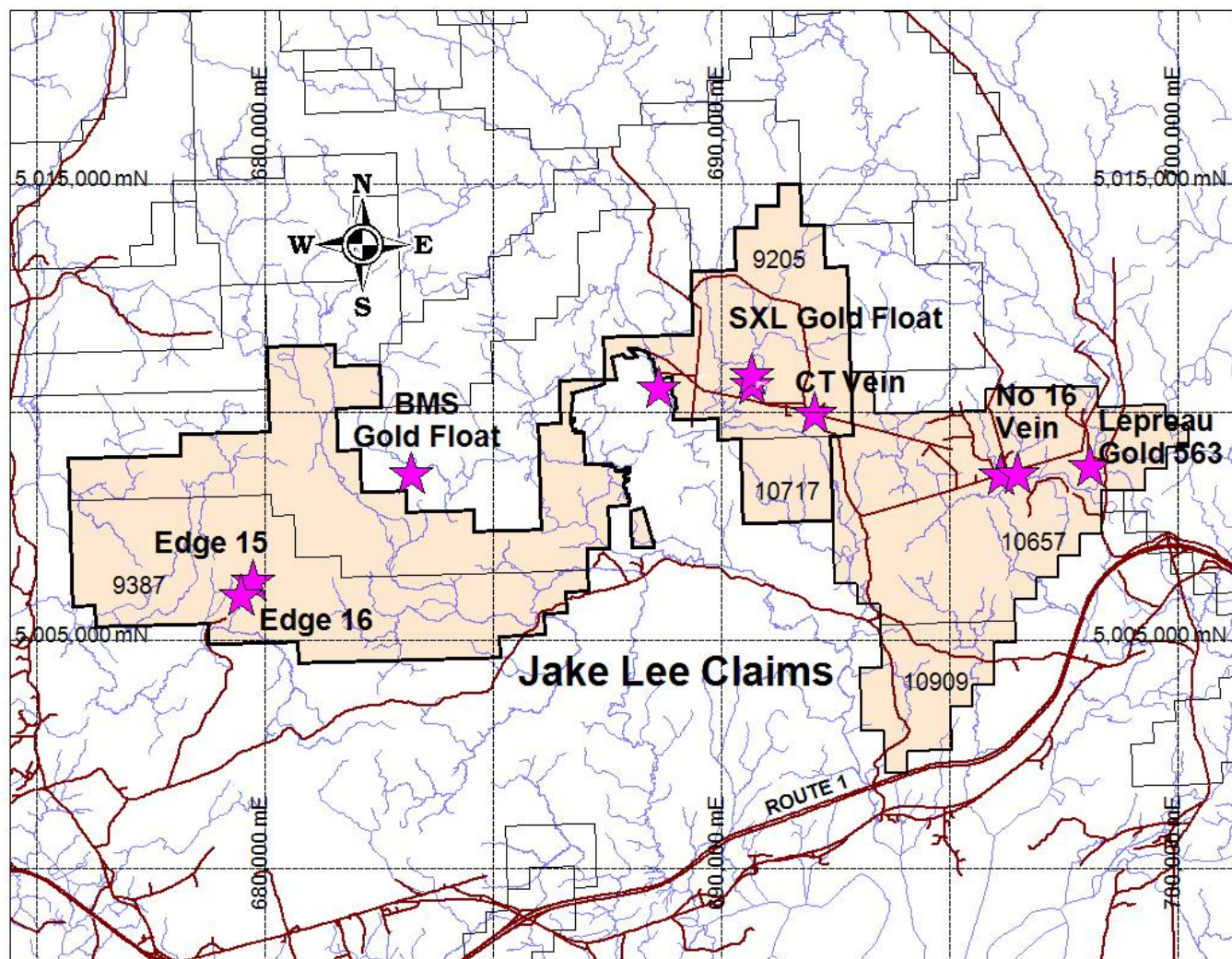
Aeromagnetics - SW New Brunswick





TSX-V: SXL

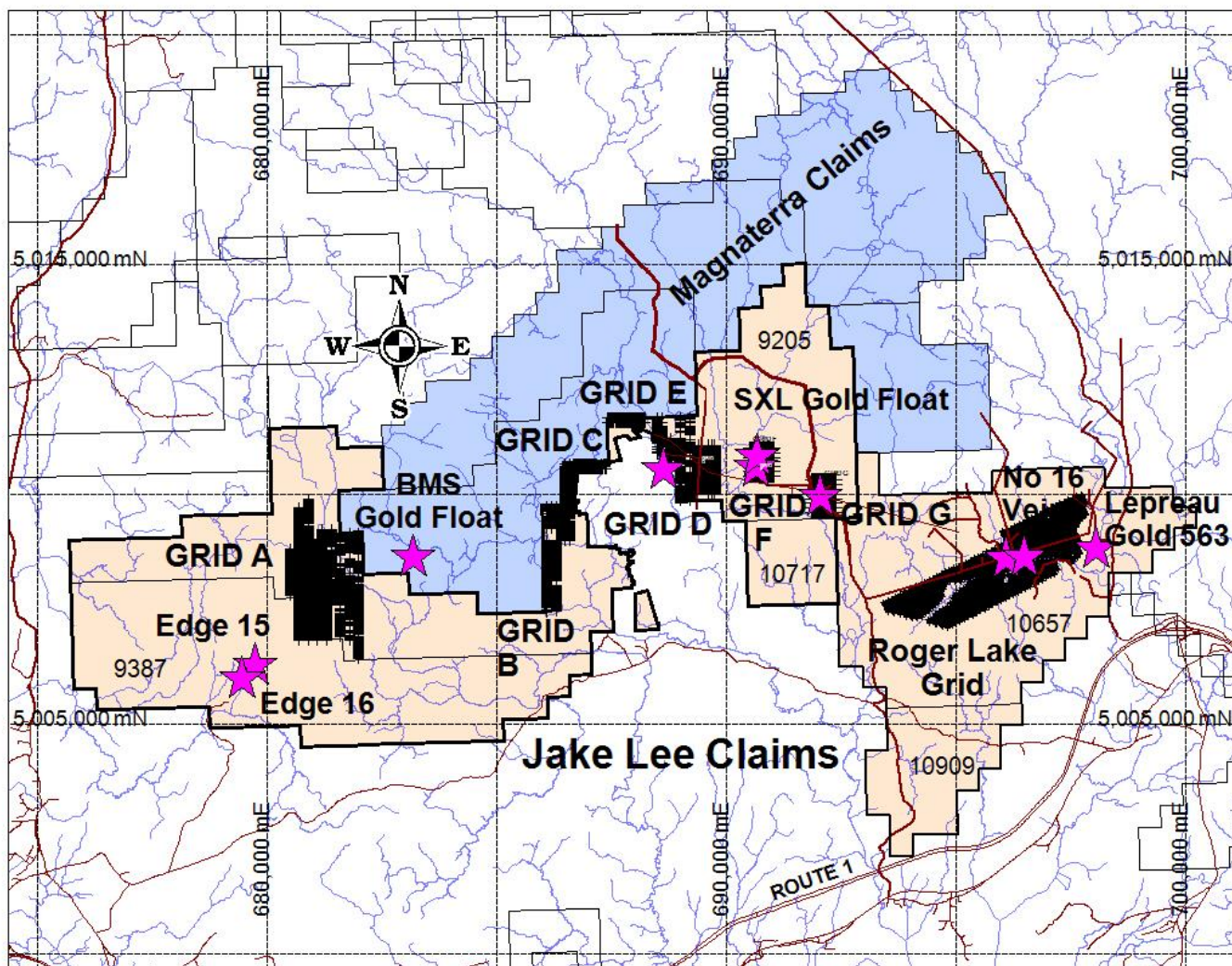
Jake Lee Claims





TSX-V: SXL

Jake Lee Claims Soil Grids





TSX-V: SXL

SLAM Magnaterra Soil Grids Gold

SLAM Grids

Soils to 0.98 g/t
gold

1 sample 16.2 g/t
gold on RL Grid

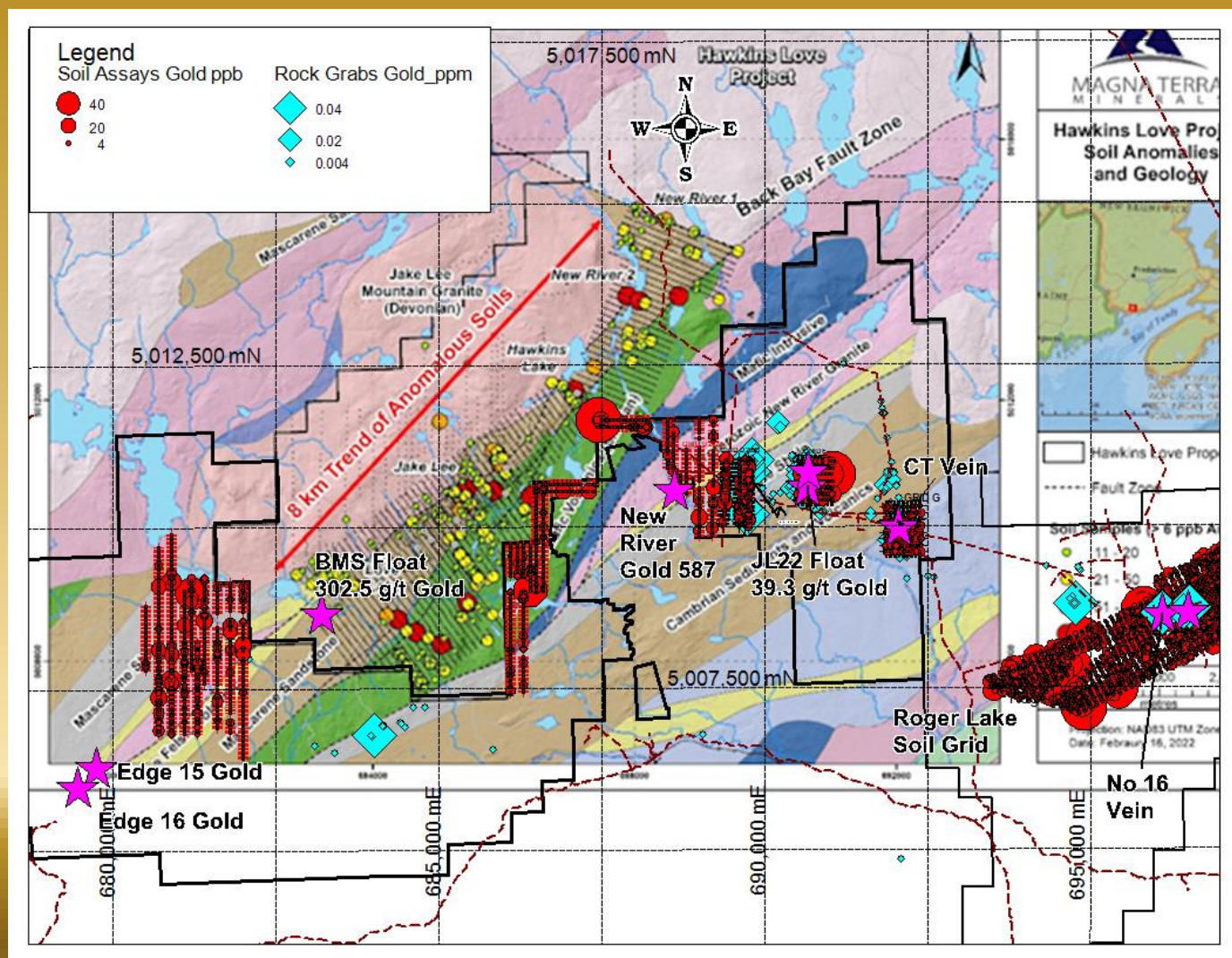
Magnaterra

Hawkins Love Grid

Soils to 0.983 g/t
gold

1 sample > 10.0 g/t
gold Ref:

www.magnaterra.com
[minerals.com](http://www.magnaterra.com)





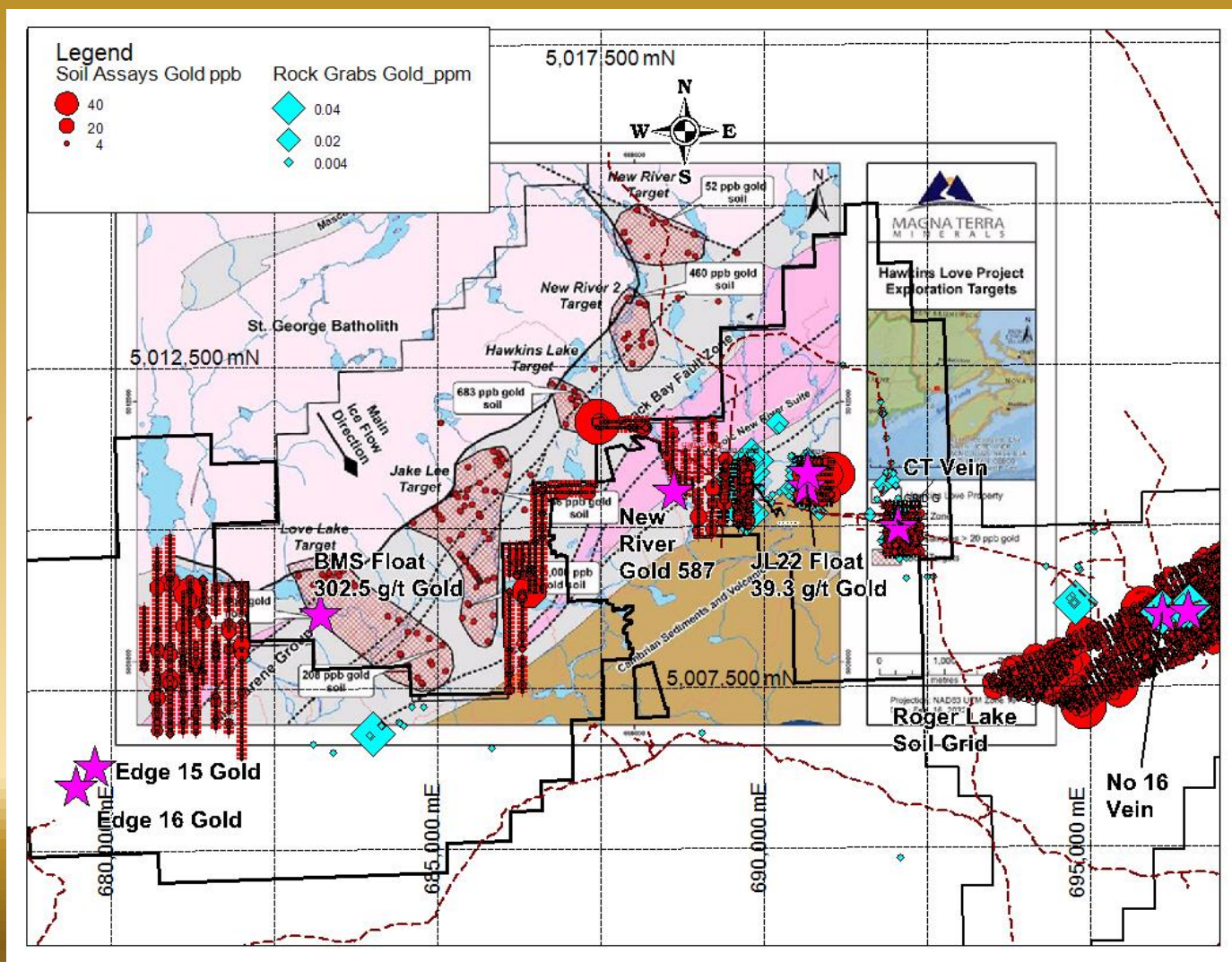
TSX-V: SXL

SLAM– Magnaterra Soil Compilation

SLAM grids
A to G

SLAM Roger
Lake (RL) grid

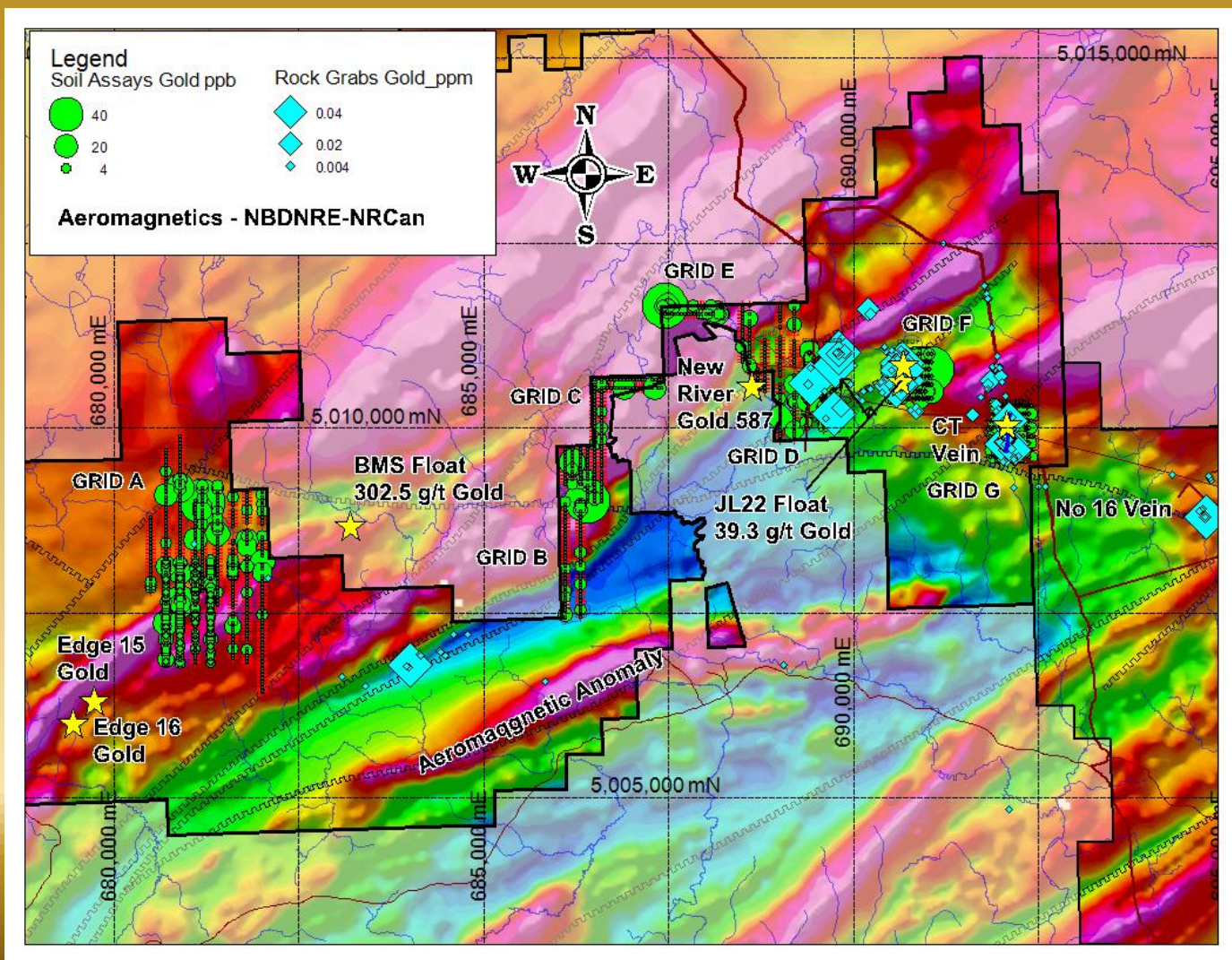
Maganaterra
Hawkins Love
soil grid ref:
www.magneterraminerals.com





TSX-V: SXL

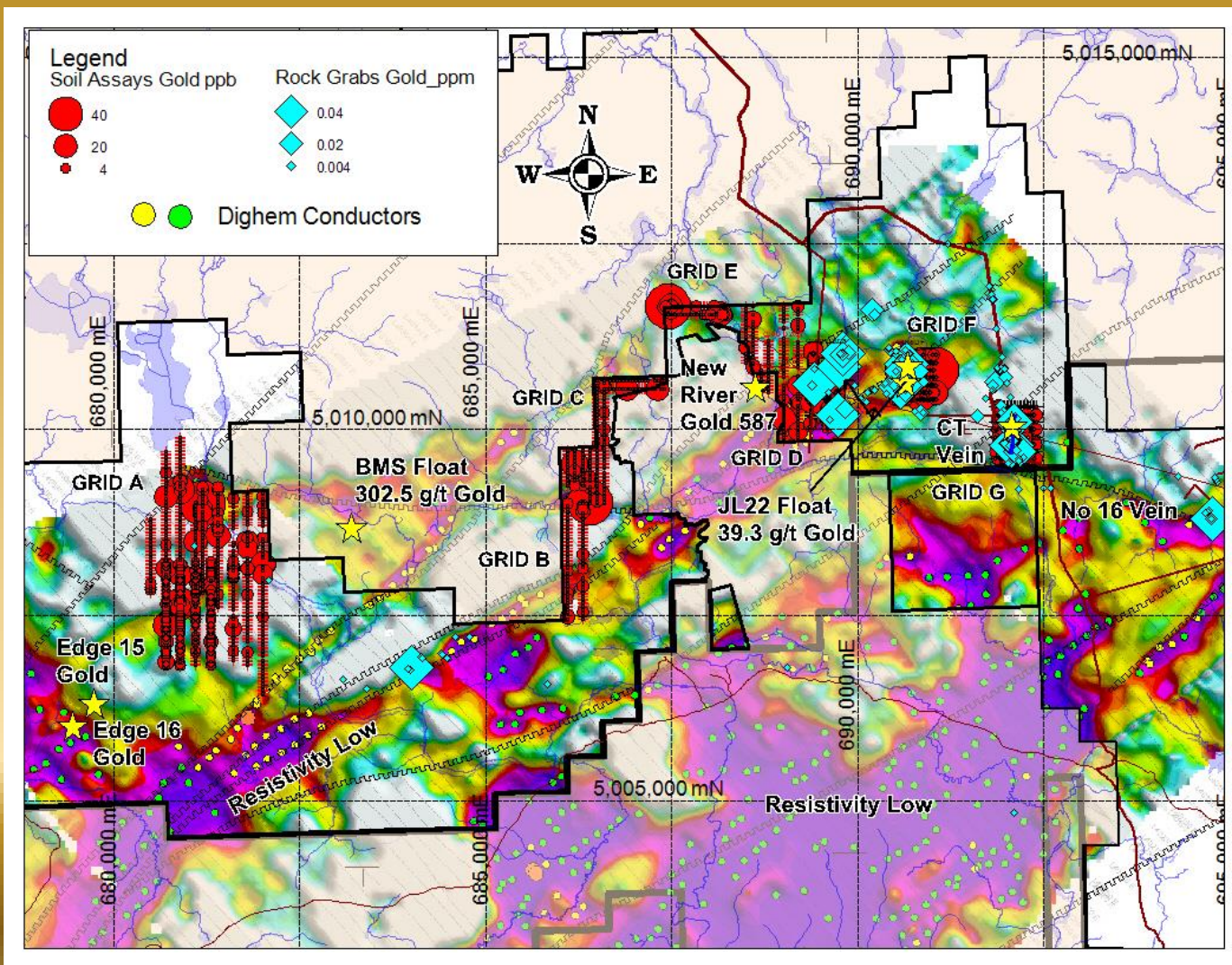
Jake Lee Aeromagnetics Soil Grids





TSX-V: SXL

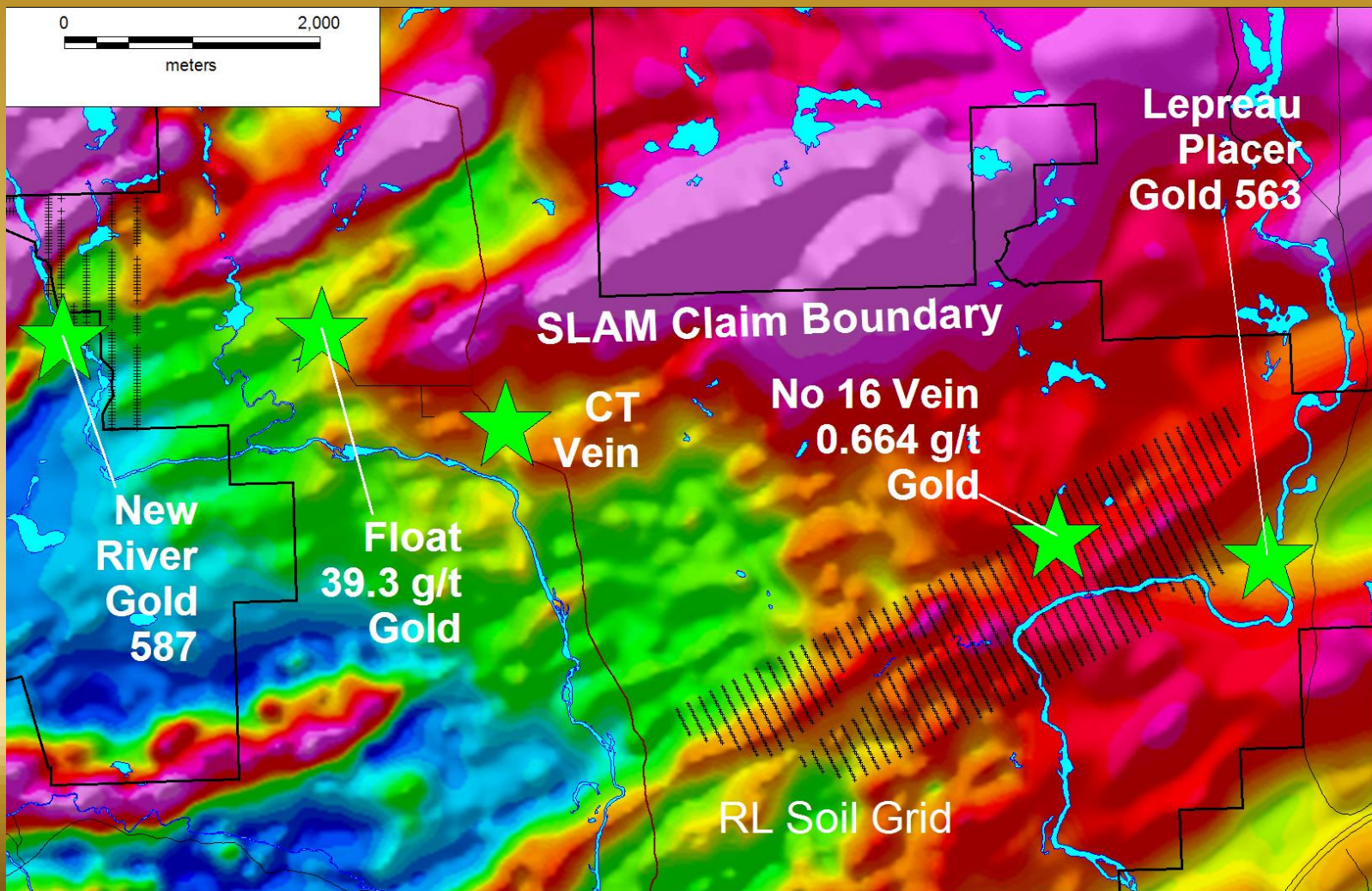
Jake Lee Soil Grids AEM Resistivity





TSX-V: SXL

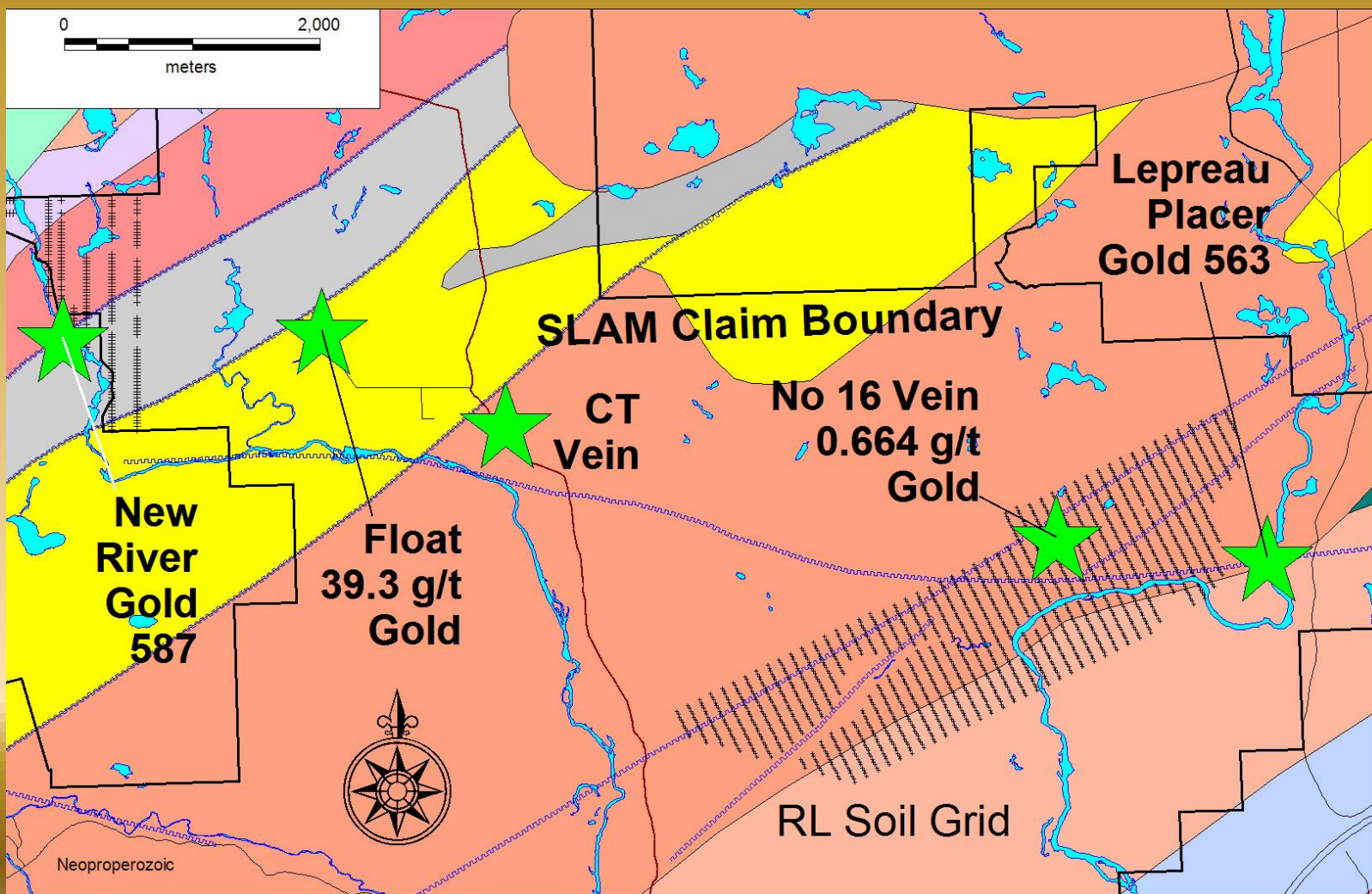
Jake Lee East-Aeromag-Gold Showings





TSX-V: SXL

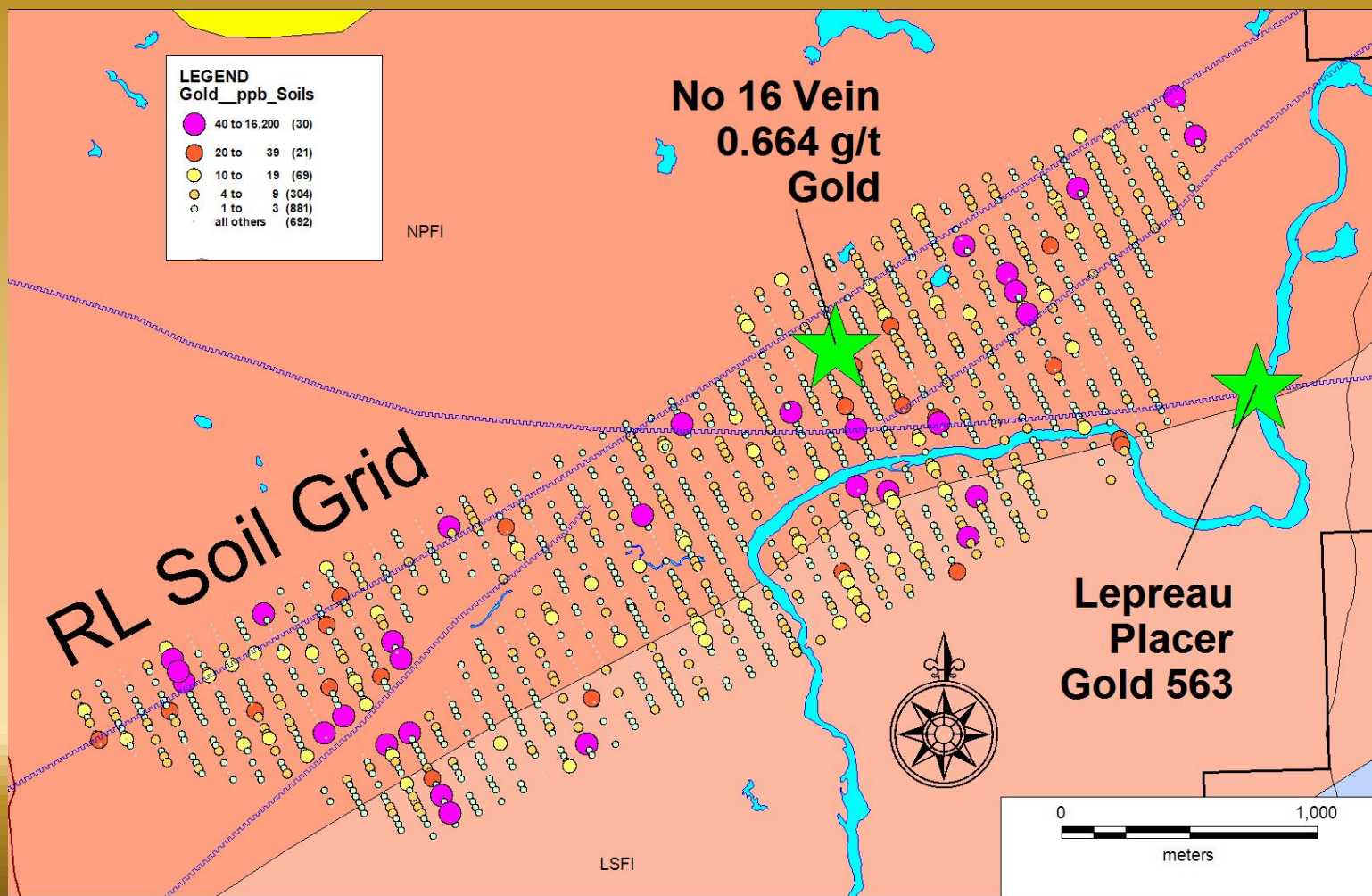
Jake Lee East-Geology-Gold Showings





TSX-V: SXL

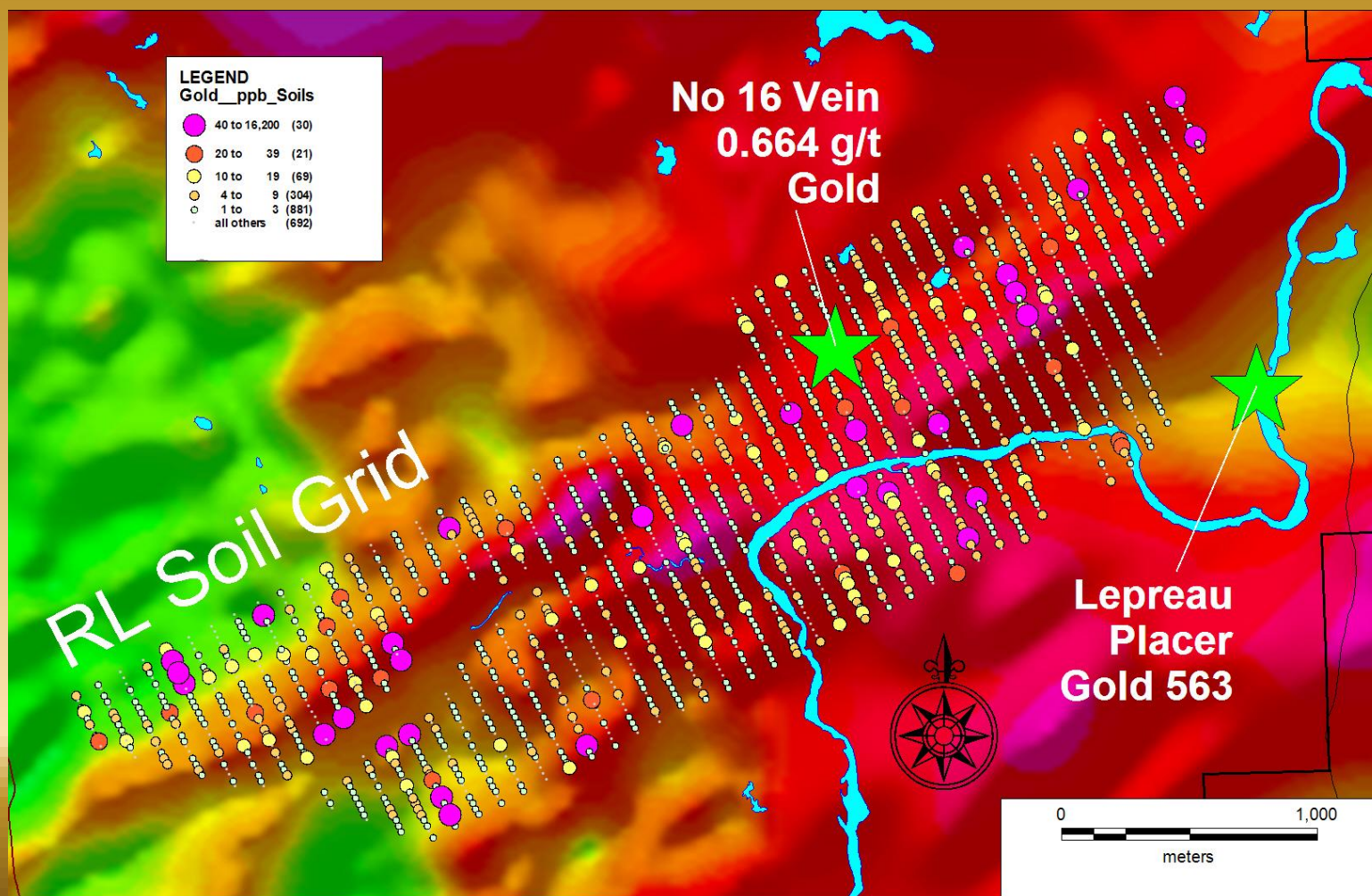
RL Soil Grid - Gold PPB - Geology





TSX-V: SXL

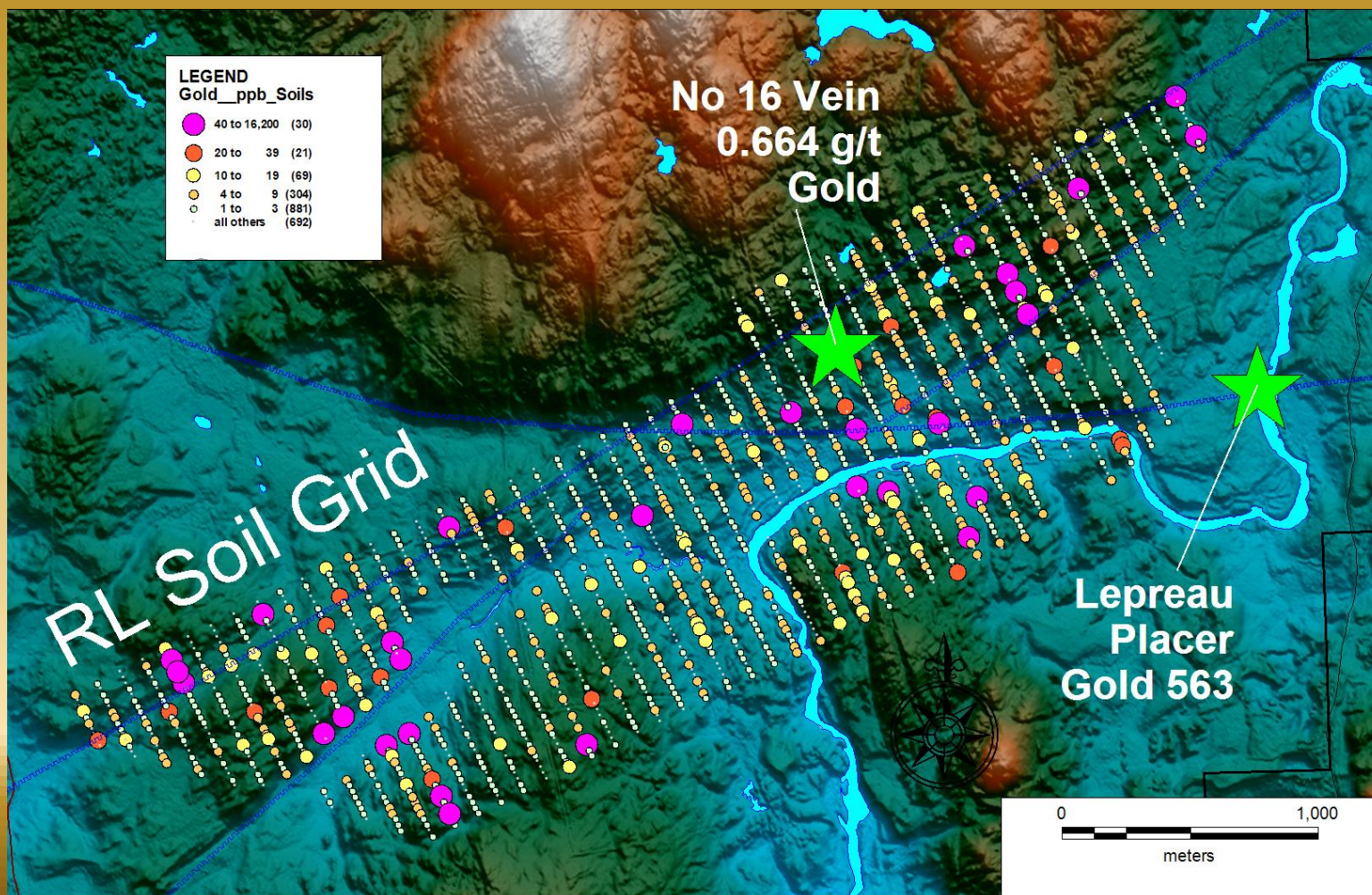
RL Soil Grid-Gold PPB-Aeromagnetics





TSX-V: SXL

RL Soil Grid - Gold PPB - Lidar





TSX-V: SXL

CT Vein Discovery





TSX-V: SXL

Jake Lee Gold Targets

| Target | Description |
|----------------|--|
| Edge 15 | 4.76 g/t gold/1m in basal till from 0.15m |
| Edge 16 | 5.00 g/t gold/0.8m in basal till from 0.15m |
| 39 G/T Float | 4 float 1.51 to 39.3 g/t gold in 250 m radius |
| No 16 vein | 1 m wide qz vein outcrop – 0.664 g/t gold |
| CT Vein | 5 m wide veins outcrop – Cu, Au |
| New River | 587 Placer Gold |
| Lepreau | 563 Placer Gold |
| RL Soils | 50 samples @ 0.02 to 0.20 g/t gold, 1 sample @ 16.2 g/t gold |
| Jake Lee Soils | 20 samples @ 0.02 to 0.20 g/t gold, 1 sample @ 0.98 g/t gold |

Contact Mike Taylor 506-623-8960 mike@slamexploration.com



TSX-V: SXL

Jake Lee Gold Claims

| No | <u>Claim</u> | <u>Name</u> | <u>Hectares</u> | <u>Units</u> |
|----|--------------|--------------|-----------------|--------------|
| 1 | 9205 | Crazy Lake | 4064 | 183 |
| 2 | 9387 | Dam Lake | 2227 | 109 |
| 4 | 10717 | New River | 363 | 16 |
| 5 | 10909 | Munson Lake | 681 | 30 |
| 6 | 10657 | Roger Lake | 2836 | 125 |
| | | Total | 10171 | 463 |

Contact Mike Taylor

506-623-8960

mike@slamexploration.com