



TSXV: SXL

SLAM Exploration Ltd

Gold, Copper, Zinc, Silver, Nickel

New Brunswick

April 2024



TSX-V: SXL

Cautionary Statement

Except for the statements of historical fact contained herein, certain information presented constitutes "forward-looking statements" within the meaning of the United States Private Securities Litigation Reform Act of 1995. Such forward-looking statements, including but not limited to, those with respect to potential expansion of mineralization, future plans for resource estimation and exploration and potential mining method involve known and unknown risks, uncertainties and other factors which may cause the actual results, performance or achievement of Slam Exploration Ltd. to be materially different from any future results, performance or achievements expressed or implied by such forward-looking statements. There can be no assurance that such statements will prove to be accurate as actual results and future events could differ materially from those anticipated in such statements. SLAM disclaims any intention or obligation to update or revise any forward-looking statements, whether as a result of new information, future events or otherwise. Accordingly, readers should not place undue reliance on forward-looking statements.



TSX-V: SXL

TRADITIONAL TERRITORIES

Home Base: Miramichi

Living and Exploring in Traditional Territories

Mi'gmaq First Nation

Wolastoqey First Nation



TSX-V: SXL

Share Structure

- **TSXV Symbol: SXL**
- **Shares issued: 68.5 M**
- **Warrants: 11.9 M @ \$0.05-\$0.08**
- **Stock options: 5.7 M @ \$0.050-\$0.085**
- **Fully Diluted: 86.1 M**
- **Market Cap: \$2.2 M @ \$0.03**
- **Major Shareholders: 40%**
- **52 Week High/Low: \$0.06/\$0.02**

Contact Mike Taylor

506-623-8960

mike@slamexploration.com



TSX-V: SXL

Project Revenue Generation

SLAM expects to receive payments of \$1,245,000 in cash and 4.34 million shares for the period Jan 01, 2023 to Dec 31, 2027 according to this table:

Year		Cash	Warrants	Shares
Total 2023 received	\$	230,000		650,000
2024 received		\$25,000	334,000	3,034,000
Remainder 2024	\$	100,000		50,000
Total 2025	\$	650,000		50,000
Total 2026	\$	170,000		250,000
Total 2027	\$	70,000		300,000
Total	\$	1,245,000	334,000	4,334,000

SLAM continues to act as a project generator and expects to negotiate new agreements to generate more revenues from its valuable portfolio in 2024.



TSX-V: SXL

Project Sales >> NSR Royalties

SLAM retains royalties on sold/optioned projects listed below:

NSR Project	Company	Commodity	Canadian Province
Ramsay	Lode Gold Resources Corp.	Gold	New Brunswick
Wedge	Nine Mile Metals Inc.	Copper Zinc	New Brunswick
Reserve Creek	S2 Minerals Inc.	Gold	Ontario
Opik eigen	S2 Minerals Inc.	Gold	Ontario
Ferguson	Puma Exploration Inc.	Gold	New Brunswick
Nash Creek*	Callinex Mines Inc.	Copper Zinc	New Brunswick
Superjack*	Callinex Mines Inc.	Copper Zinc	New Brunswick

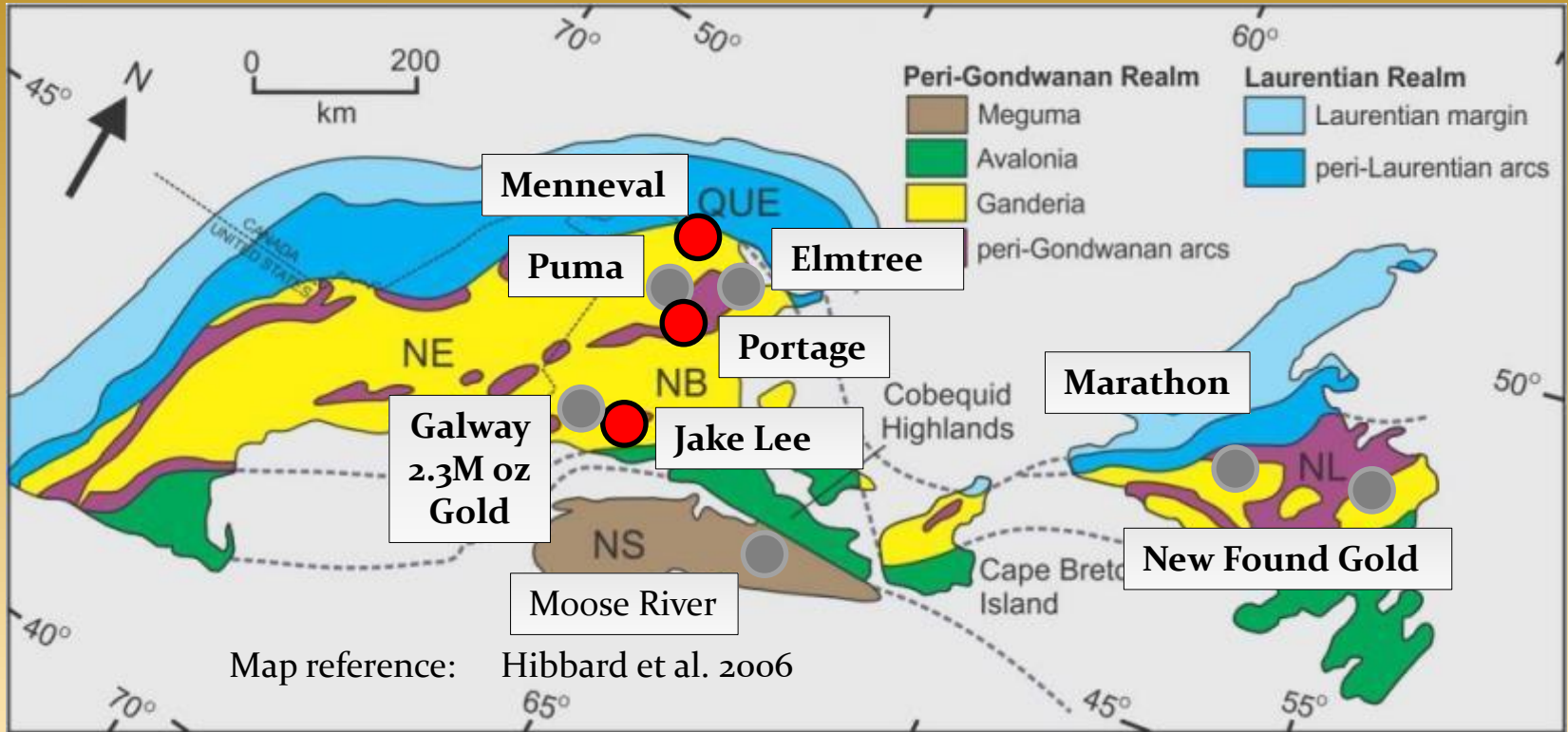
***Nash Creek-Superjack agreement is fully vested.**

SLAM retains NSR royalties on these projects, subject to buyout provisions.



TSX-V: SXL

Appalachian Gold – NB-NS-NL



● SLAM Gold Property

● Other Gold Companies



TSX-V: SXL

NEW BRUNSWICK PROJECTS

GOLD PROJECTS

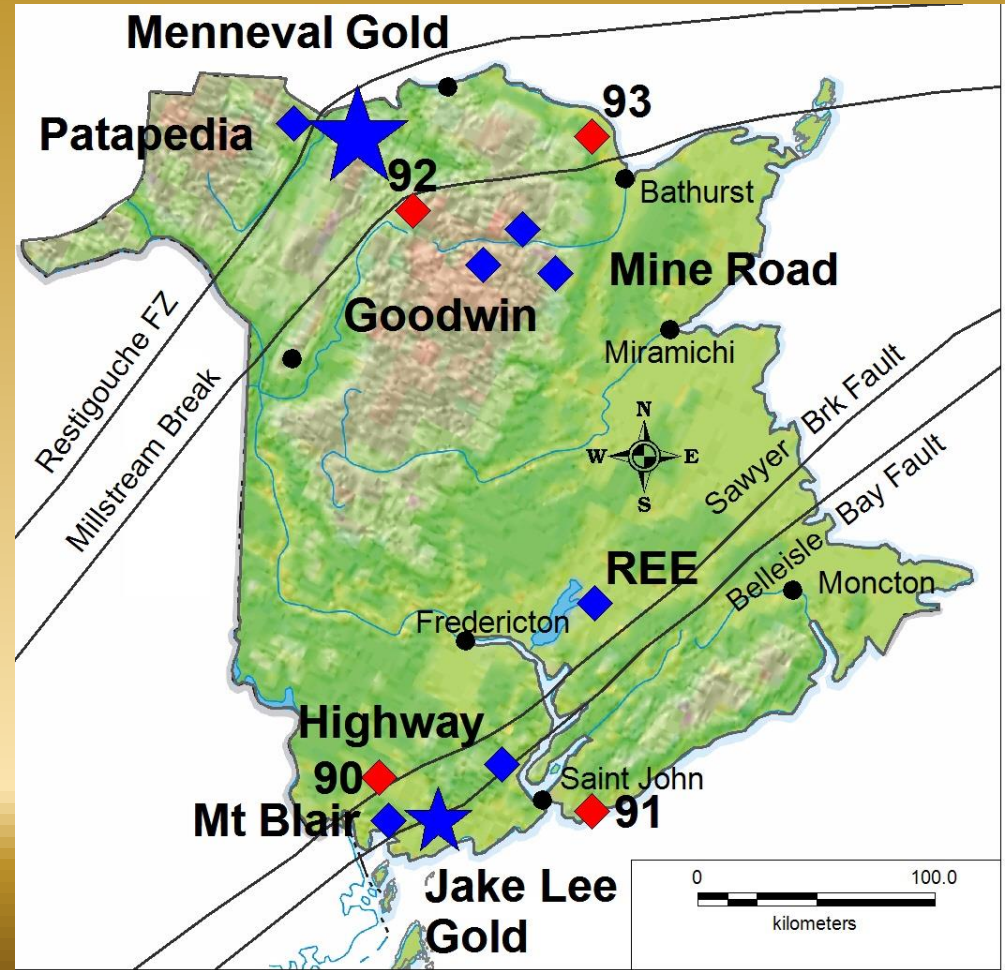
- MENNEVAL GOLD
- JAKE LEE GOLD
- MT BLAIR GOLD

COPPER NICKEL ZINC PROJECTS

- MINE ROAD COPPER ZINC
- GOODWIN COPPER NICKEL
- A'HEARN ZINC SILVER
- HIGHWAY COBALT COPPER
- PATAPEDIA COPPER SILVER

RARE EARTH PROJECTS

- CUMBERLAND REE





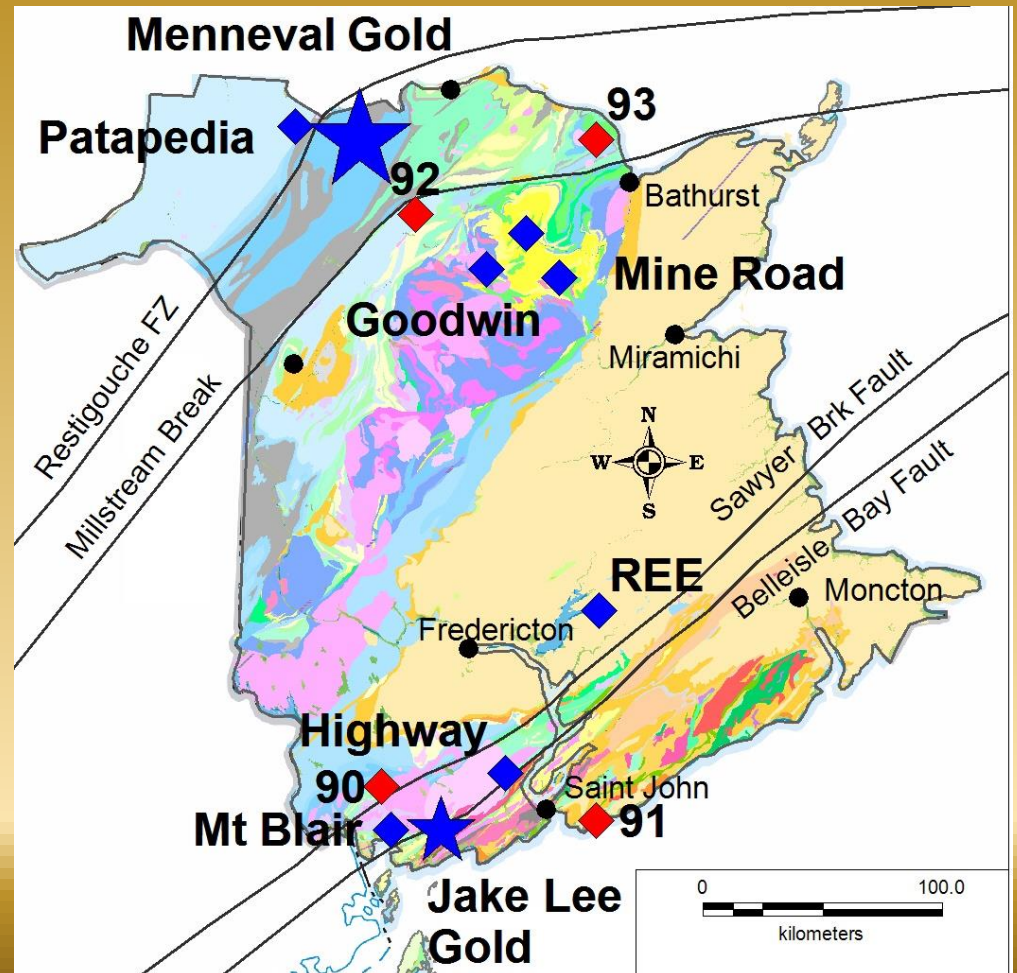
TSX-V: SXL

New Brunswick Geology

51,800 hectares

46 mineral claims

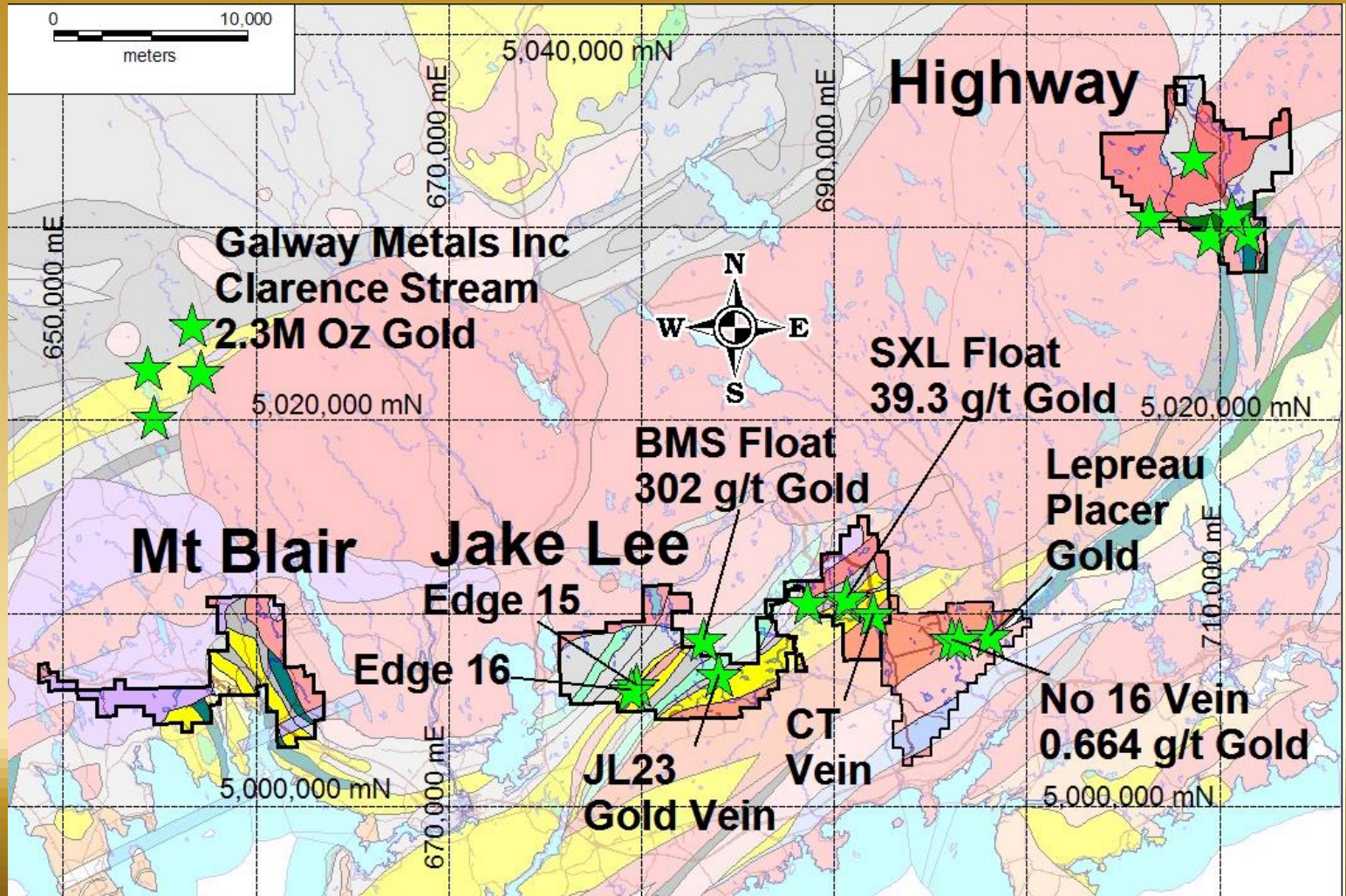
1782 claim units





TSX-V: SXL

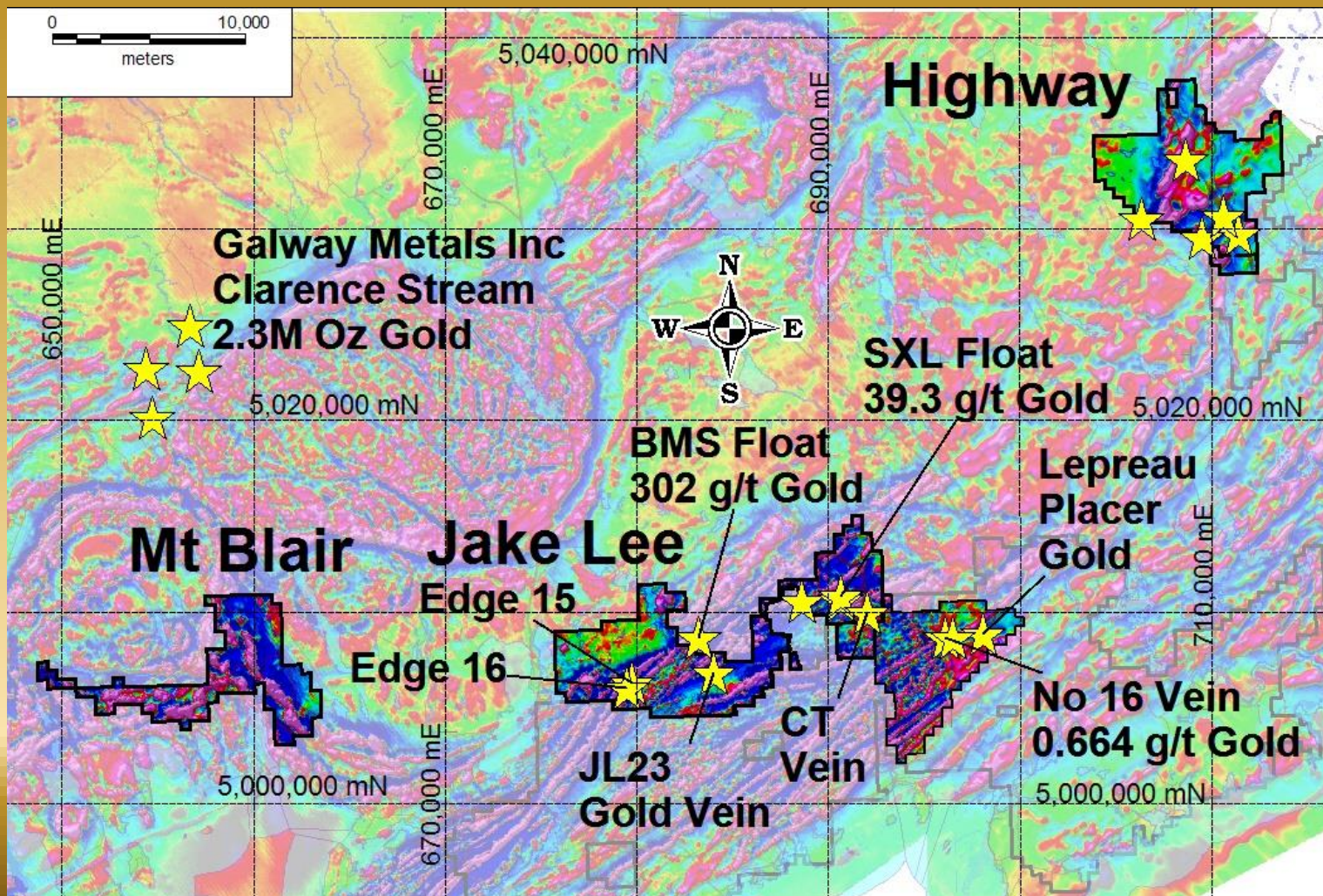
Gold Projects - SW New Brunswick





TSX-V: SXL

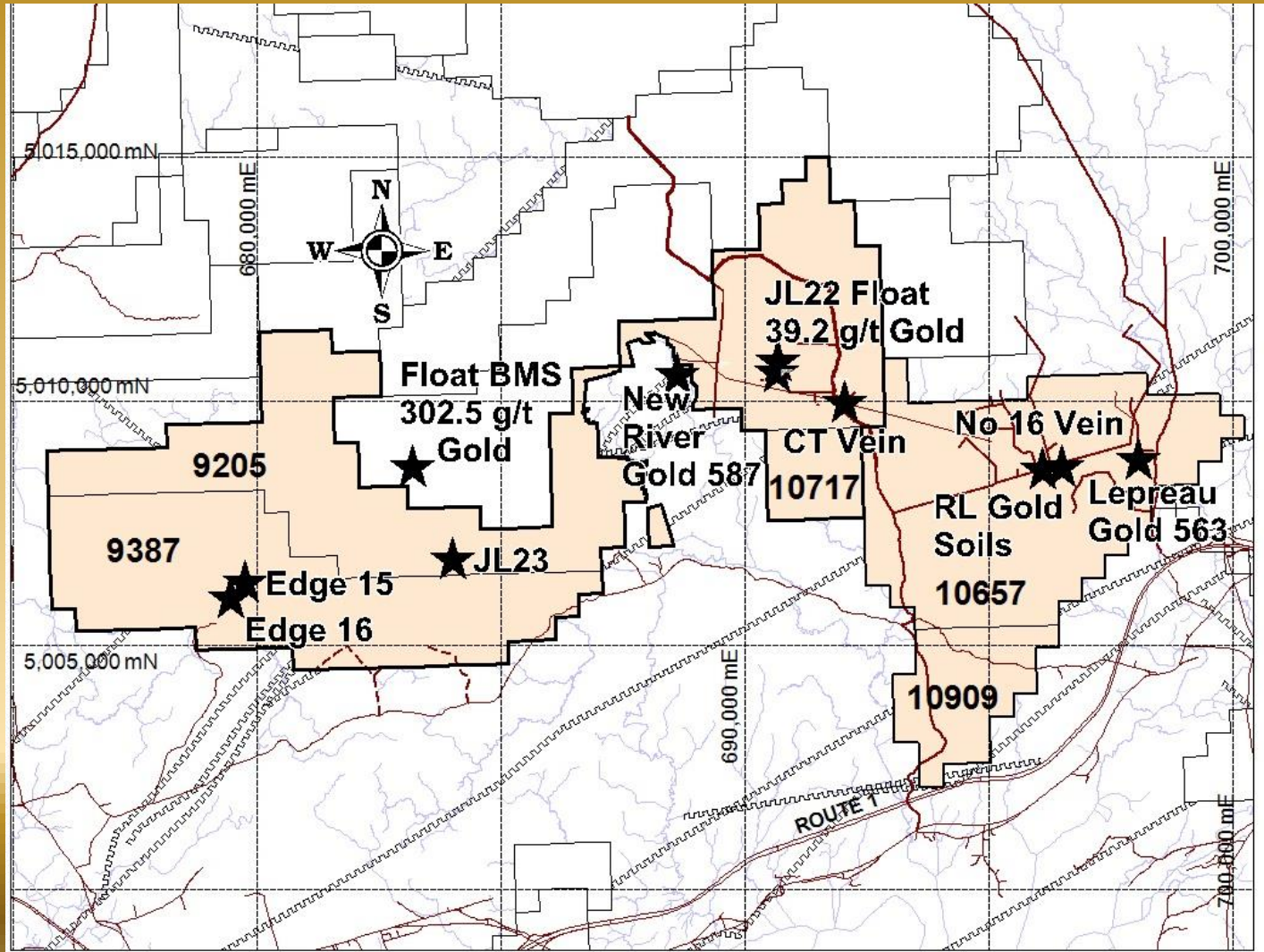
Aeromagnetics - SW New Brunswick





TSX-V: SXL

Jake Lee Claims Gold Showings





TSX-V: SXL

Jake Lee Gold Targets

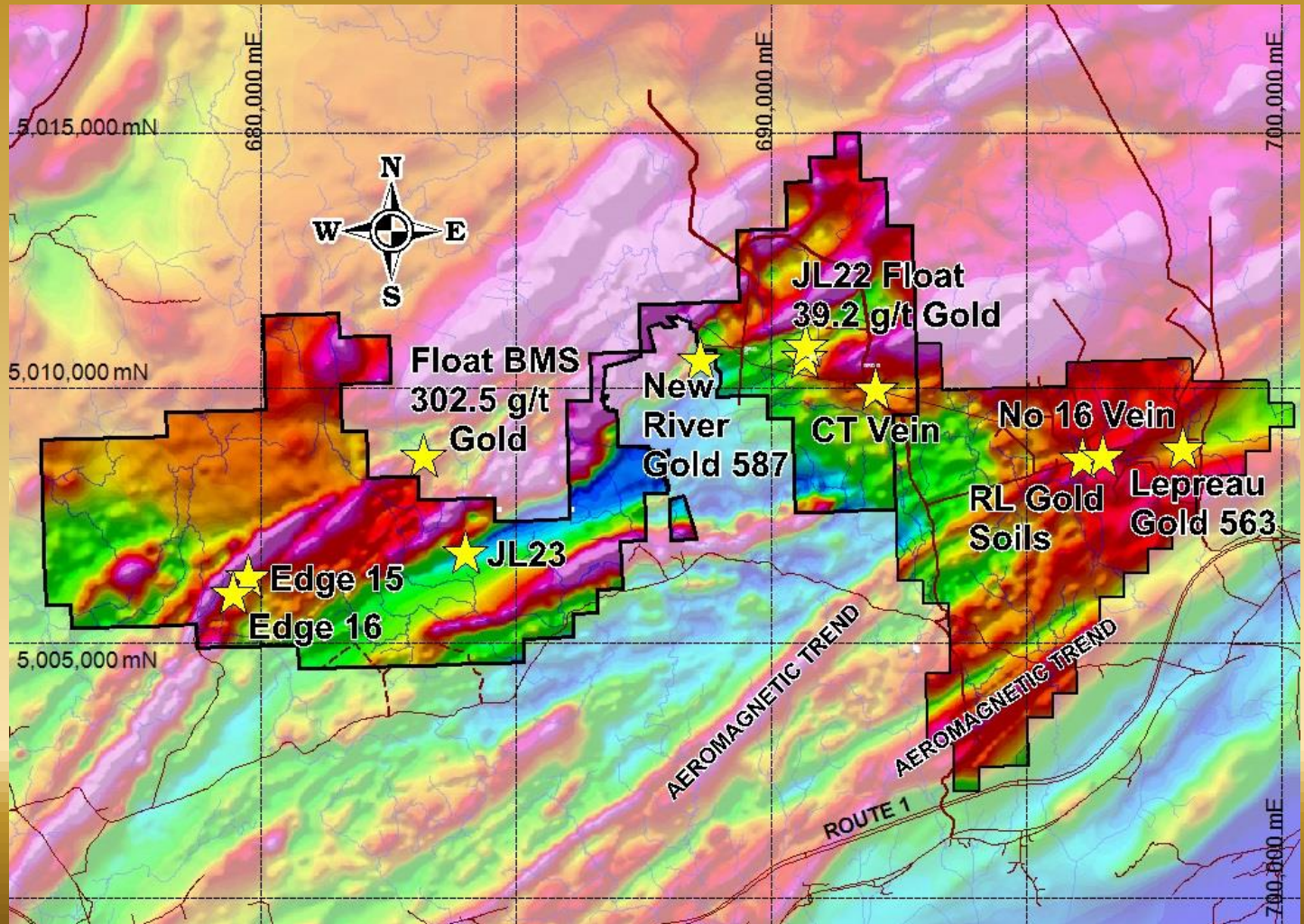
Target	Description
Edge 15	4.76 g/t gold/1m in basal till from 0.15m
Edge 16	5.00 g/t gold/0.8m in basal till from 12.20m
JL22 float 39.2 g/t gold	4 float 1.51 to 39.3 g/t gold, soil samples to 0.98 g/t gold
JL23 quartz vein	0.072 g/t gold beneath airborne conductor
No 16 vein	1 m wide quartz subcrop, 0.664 g/t gold
CT Vein	5 m wide quartz veins outcrop – copper, gold in float
New River Gold 587	587 placer gold just outside project boundary
Lepreau Gold 563	563 placer gold
RL Soil Grid	50 samples @ 0.02 to 0.20 g/t gold, 1 sample @ 16.2 g/t gold
Jake Lee Soil Grids	20 samples @ 0.02 to 0.20 g/t gold, 1 sample @ 0.98 g/t gold

Contact Mike Taylor 506-623-8960 mike@slamexploration.com



TSX-V: SXL

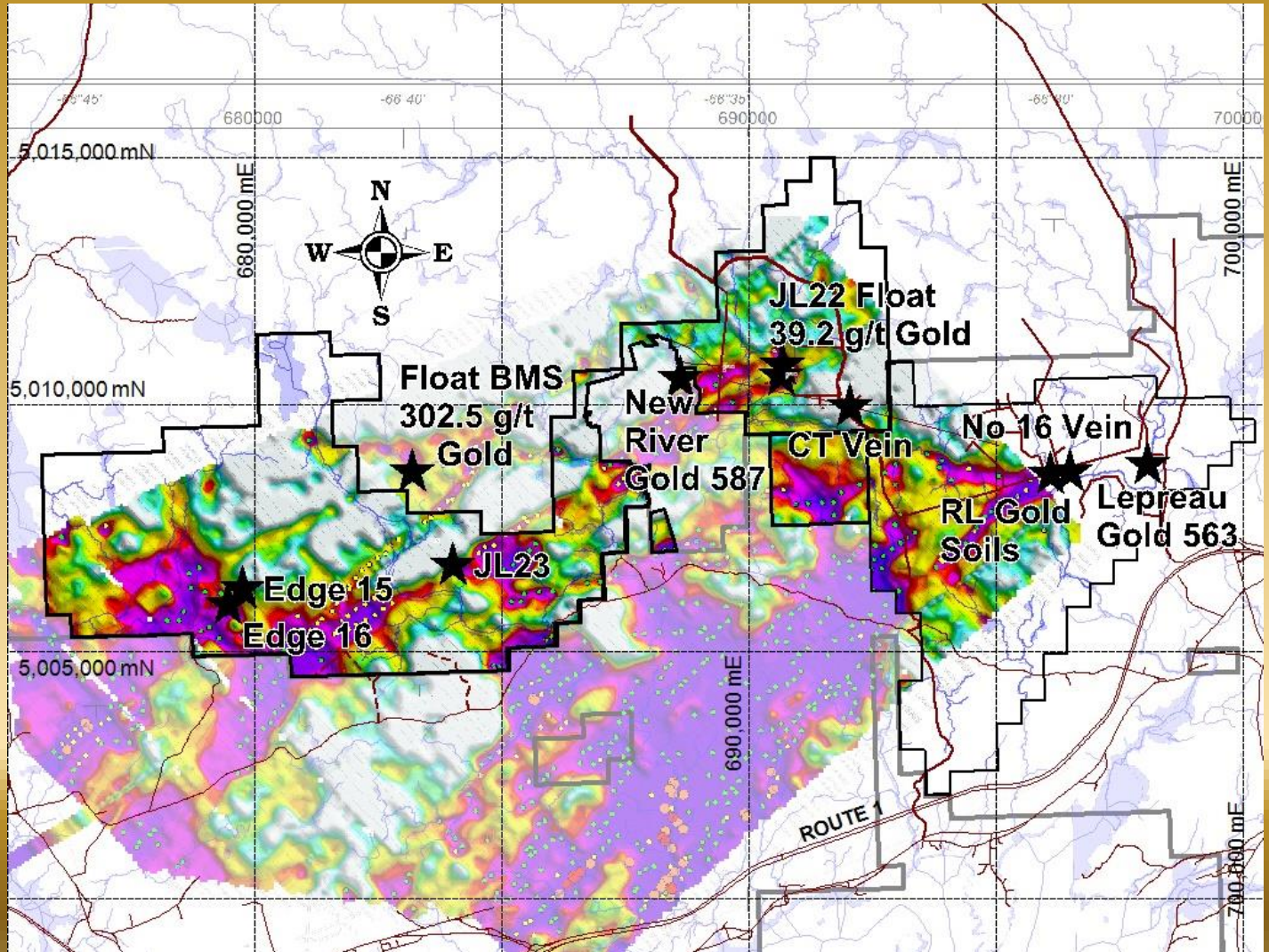
Jake Lee Aeromag - Gold Showings





TSX-V: SXL

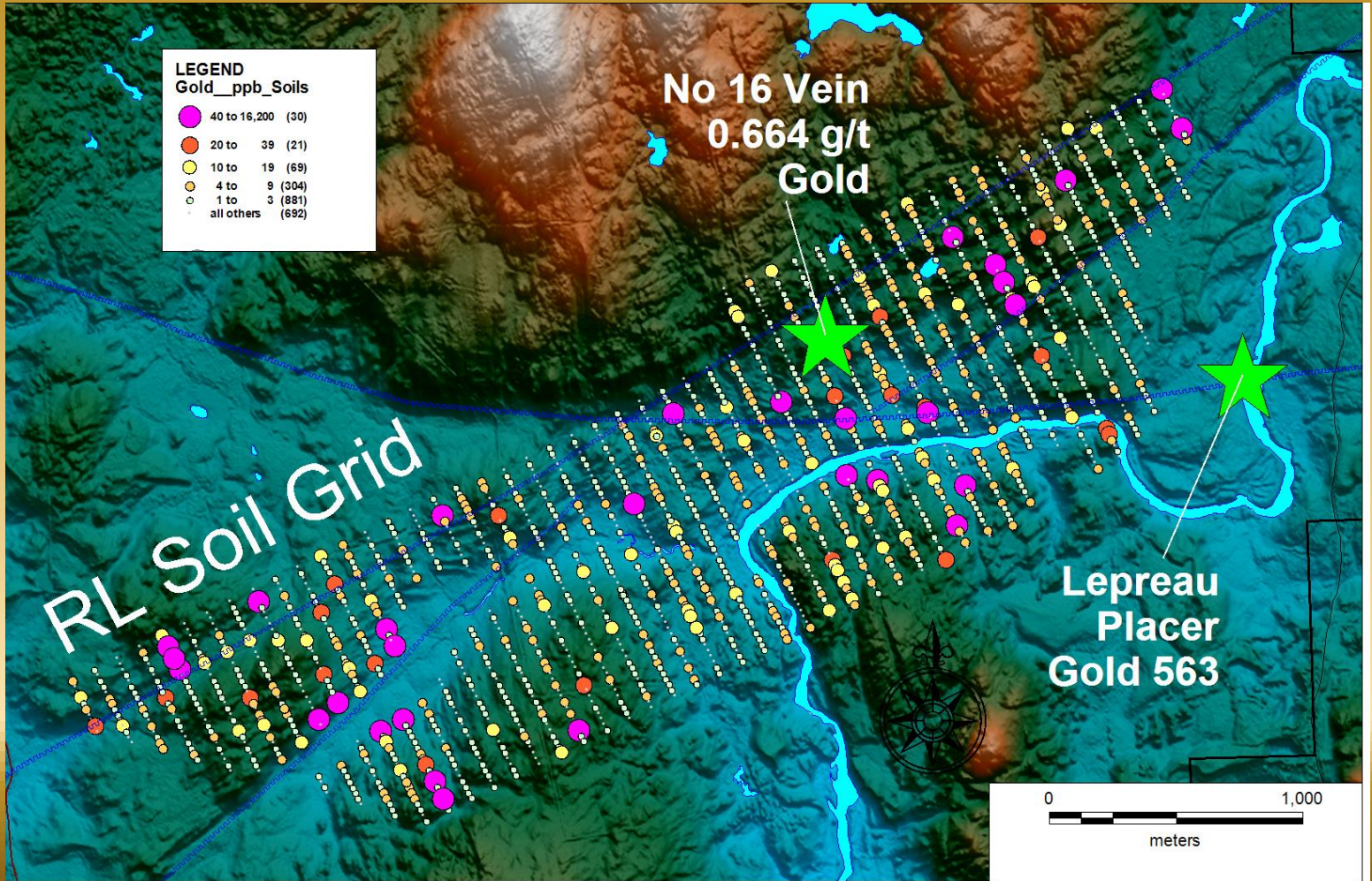
Jake Lee Soil Grids AEM Resistivity





TSX-V: SXL

RL Soil Grid - Gold PPB - Lidar





TSX-V: SXL

CT Vein Discovery





TSX-V: SXL

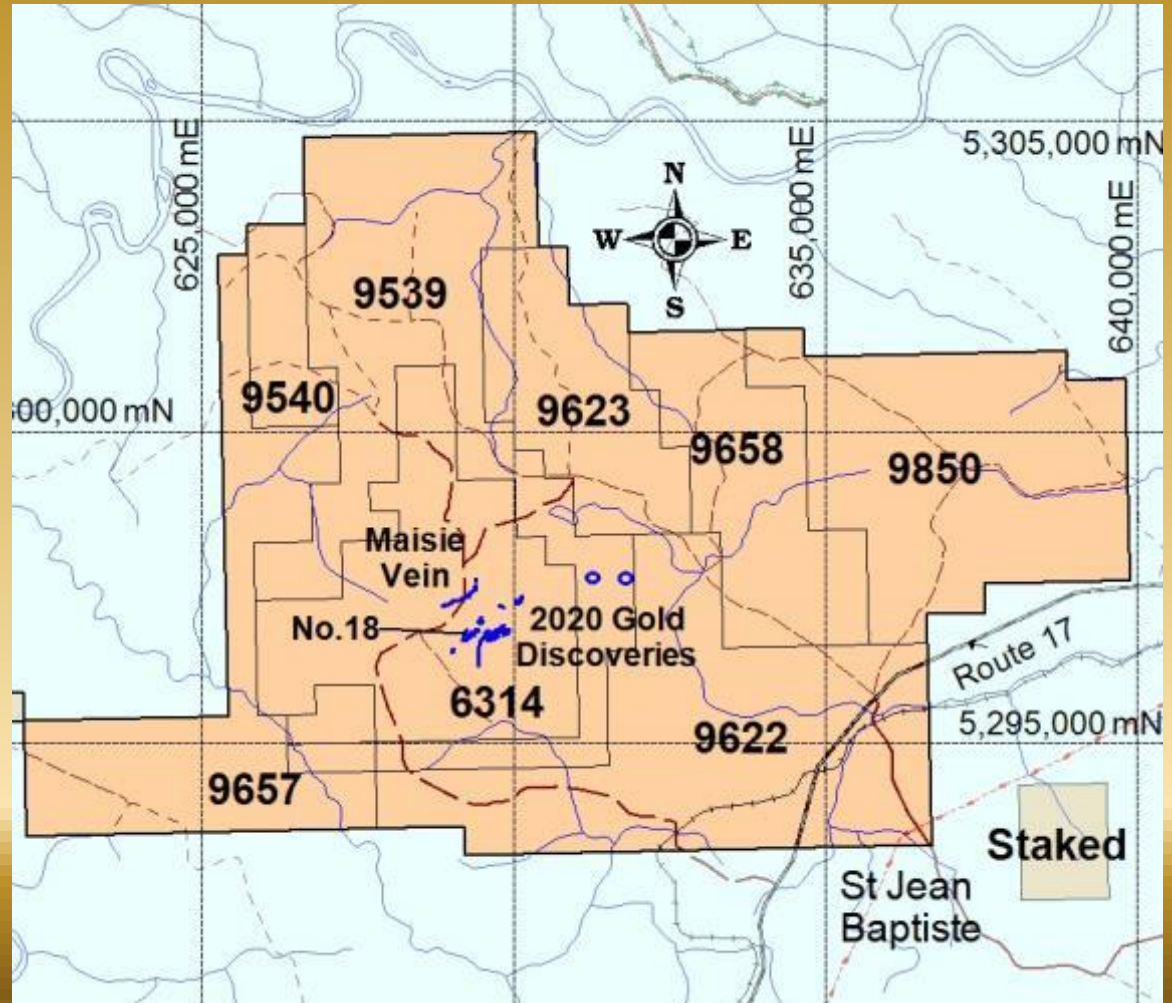
MENNEVAL GOLD PROJECT

Multiple gold discoveries

No 18 vein
3,955 g/t gold/ 0.1 m

Multiple VG sites

8 mineral claims
12,450 hectares
100% SLAM



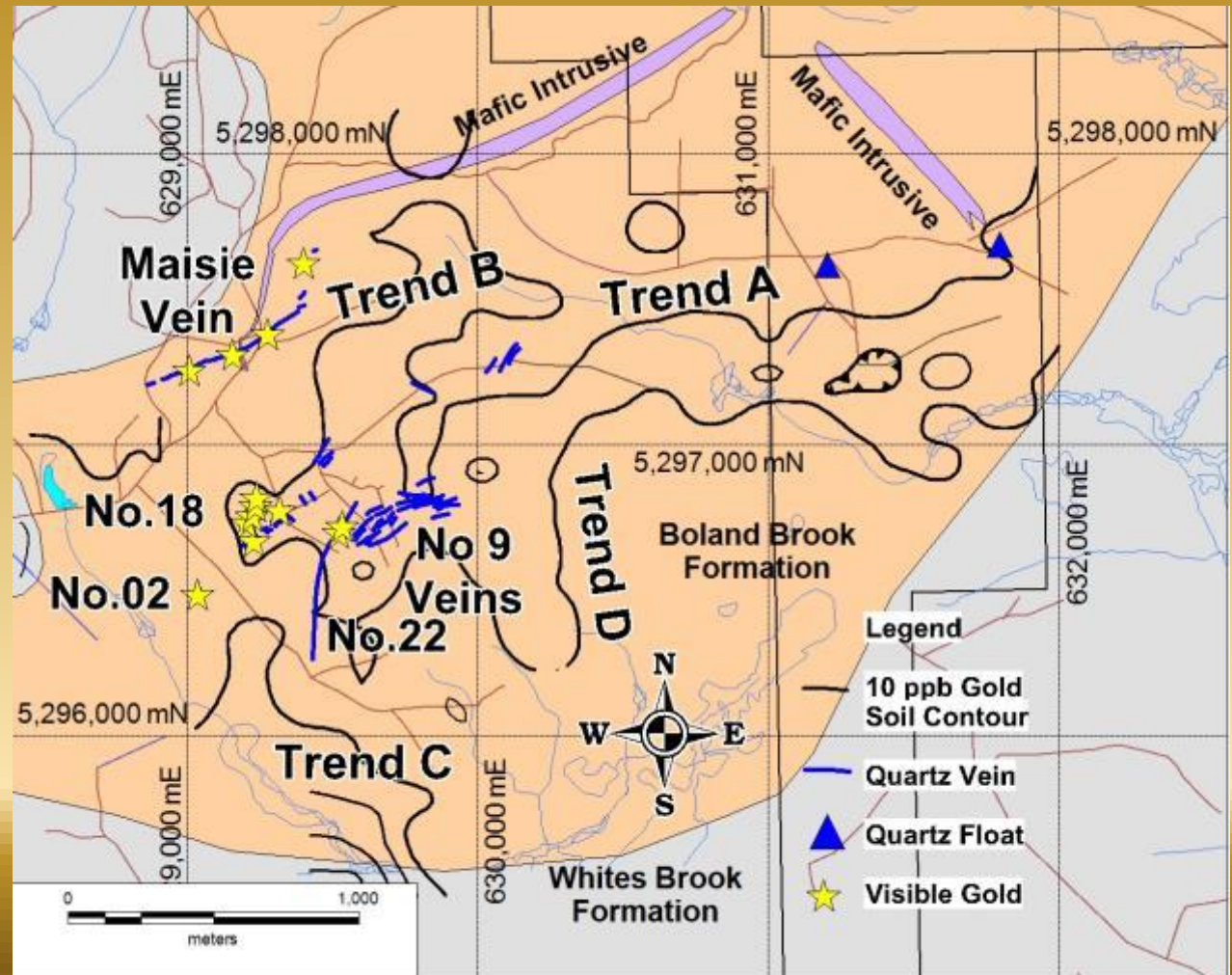


TSX-V: SXL

MENNEVAL GOLD VEINS

Multiple gold veins

3.000 m soil trend





TSX-V: SXL

SELECTED DRILLING RESULTS GOLD

<u>Zone</u>	<u>Hole ID</u>	<u>From m</u>	<u>interval m</u>	<u>Gold g t</u>
No 18	BG2109	15.43	0.02	10.00
No 18	BG2111	17.15	0.2	162.50
No 18	BG2123	13.8	0.1	48.80
No 18	BG2124	18.83	0.1	23.60
No 18	BG2126	22.25	0.51	56.50
No 18	BG22-30	27.2	0.5	56.90
Maisie	MG1201	5.83	0.25	28.50
Maisie	MG1202	13.85	0.4	8.41
Maisie	MG1203	17.93	0.75	6.93
Maisie	MG1211	19.7	0.45	10.90
Maisie	MG1212	21.6	0.5	9.09
Maisie	MG1221	16.3	0.3	18.40
Maisie	MG1224	13	0.35	46.10
Maisie	MG1225	17.9	0.4	16.90
Maisie	MG1226	24.5	0.3	104.00
Maisie	MG1240	9.2	0.6	8.22
Maisie	MG1352	17.6	0.3	62.80
Maisie	MG1354	9.1	0.3	12.10
Maisie	MG1363	31.09	0.31	121.00
Maisie	MG2069	18.6	0.3	10.30

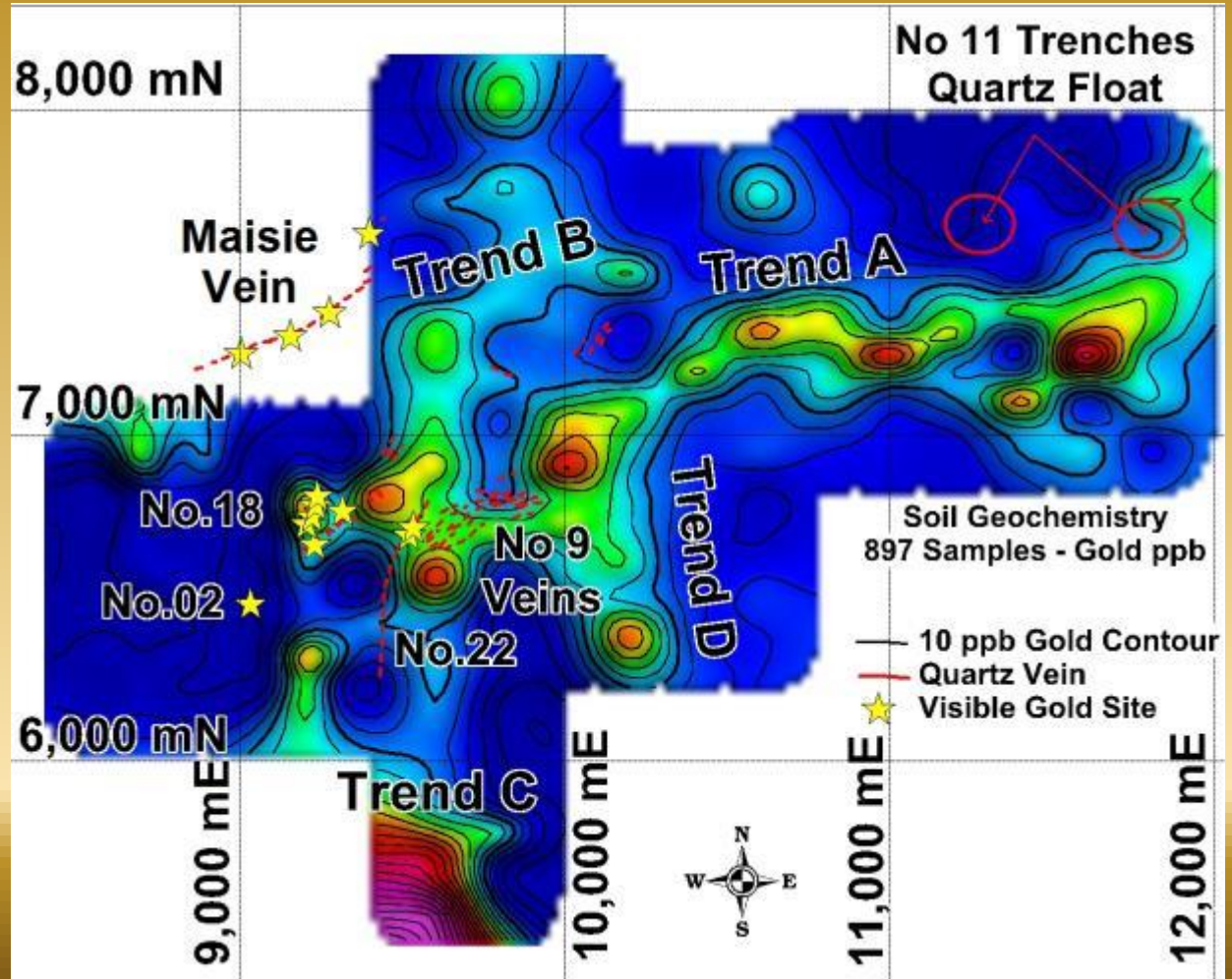


TSX-V: SXL

3.000 METRE GOLD ANOMALY

10 ppb to 683 ppb
gold soil anomalies

Open south and east





TSX-V: SXL

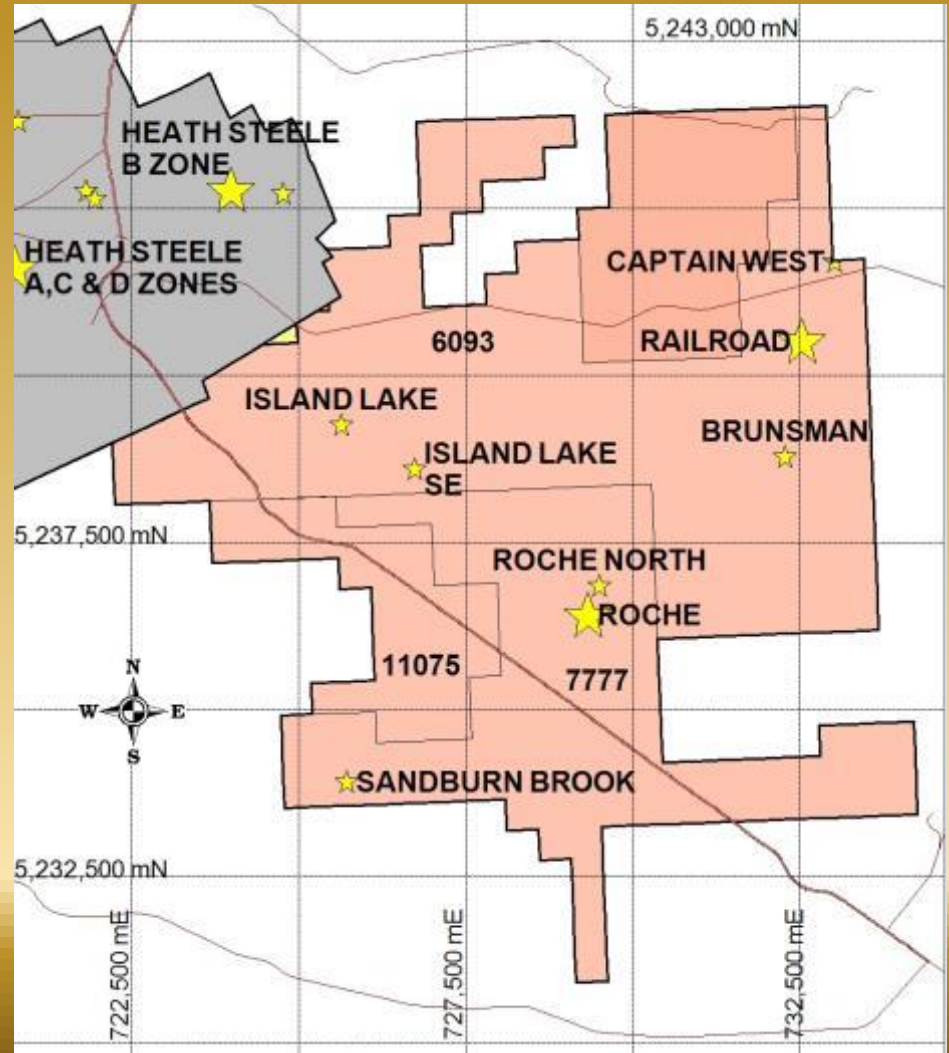
MINE ROAD MINERAL CLAIMS

8230 Hectares

Adjacent Heath Steele Mine Property

7 VMS Mineral Occurrences

Zinc-Lead-Copper-Silver



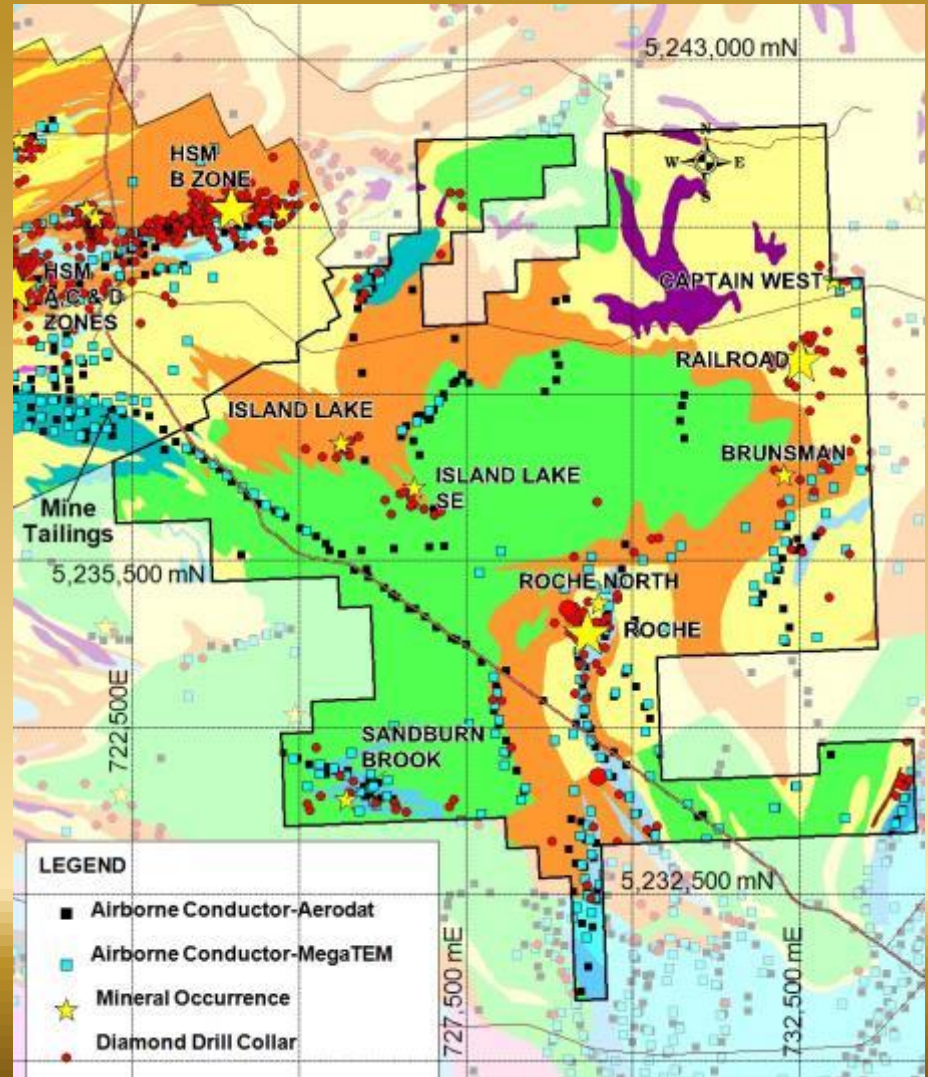


MINE ROAD GEOLOGY

Railroad Zone: Core intervals to 14.51% zinc, 5.86% lead, 0.67% copper, 139.9 g/t silver over 9.0 metres

**Roche Zone
More copper-rich and open at depth**

Fold repetitions of strata that host BMS No 12 and HSM ore bodies



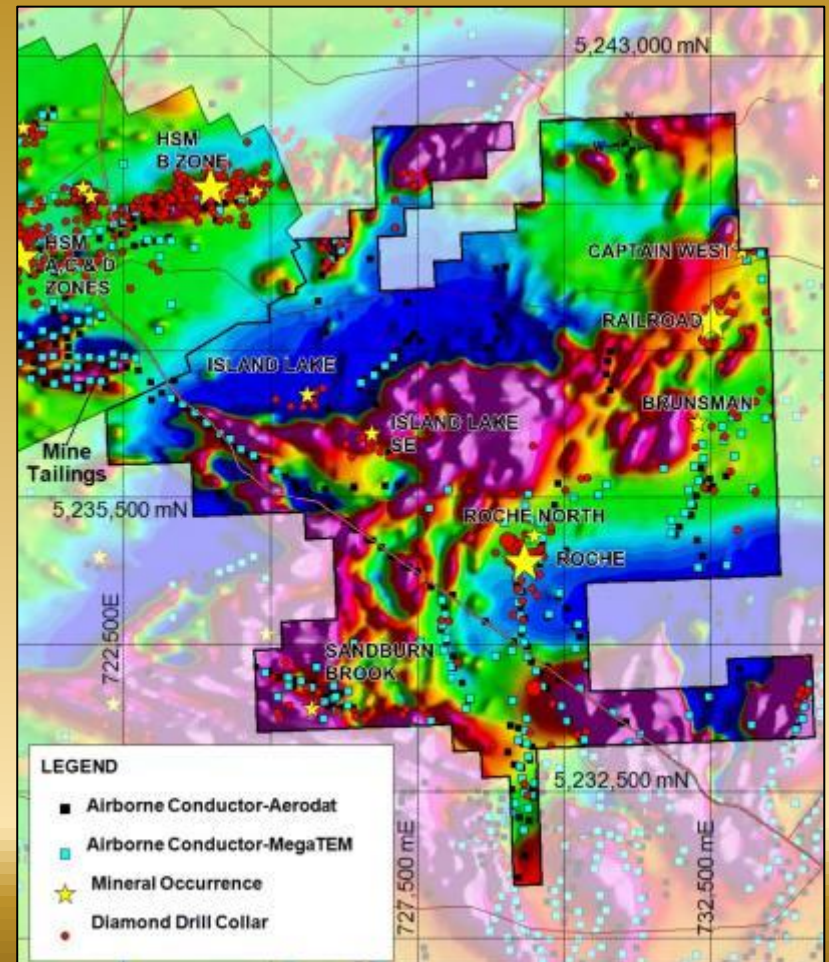
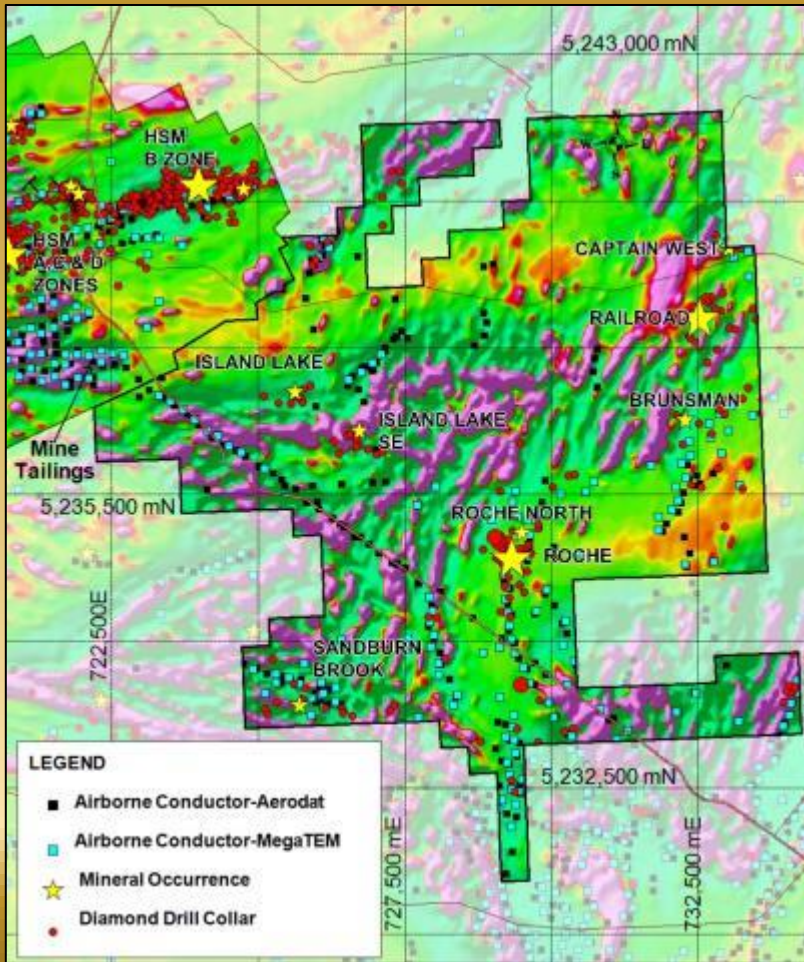


TSX-V: SXL

MINE ROAD AEROMAGNETICS

Fugro Gradient Mag

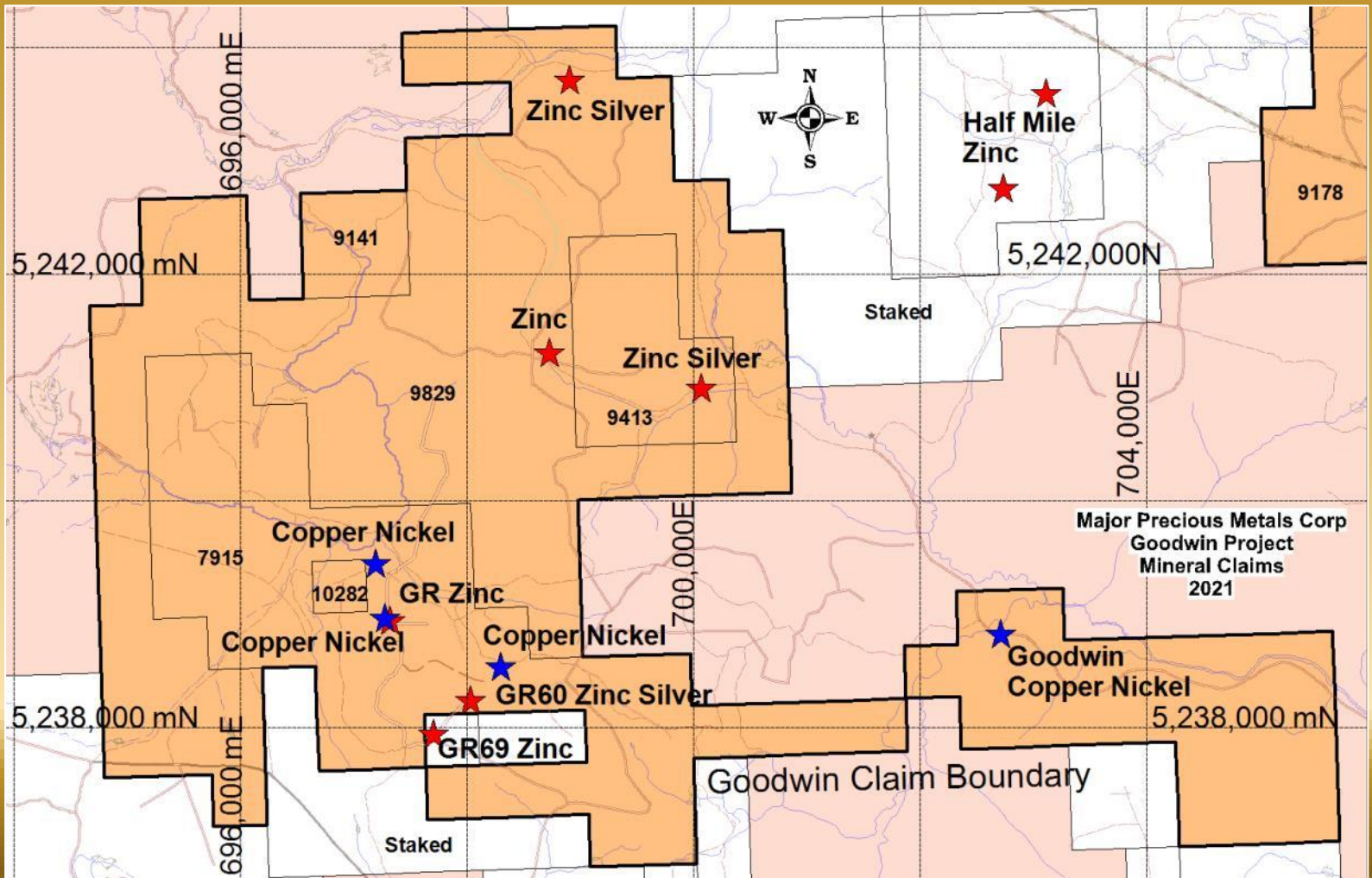
Aerodat Total Field Mag





TSX-V: SXL

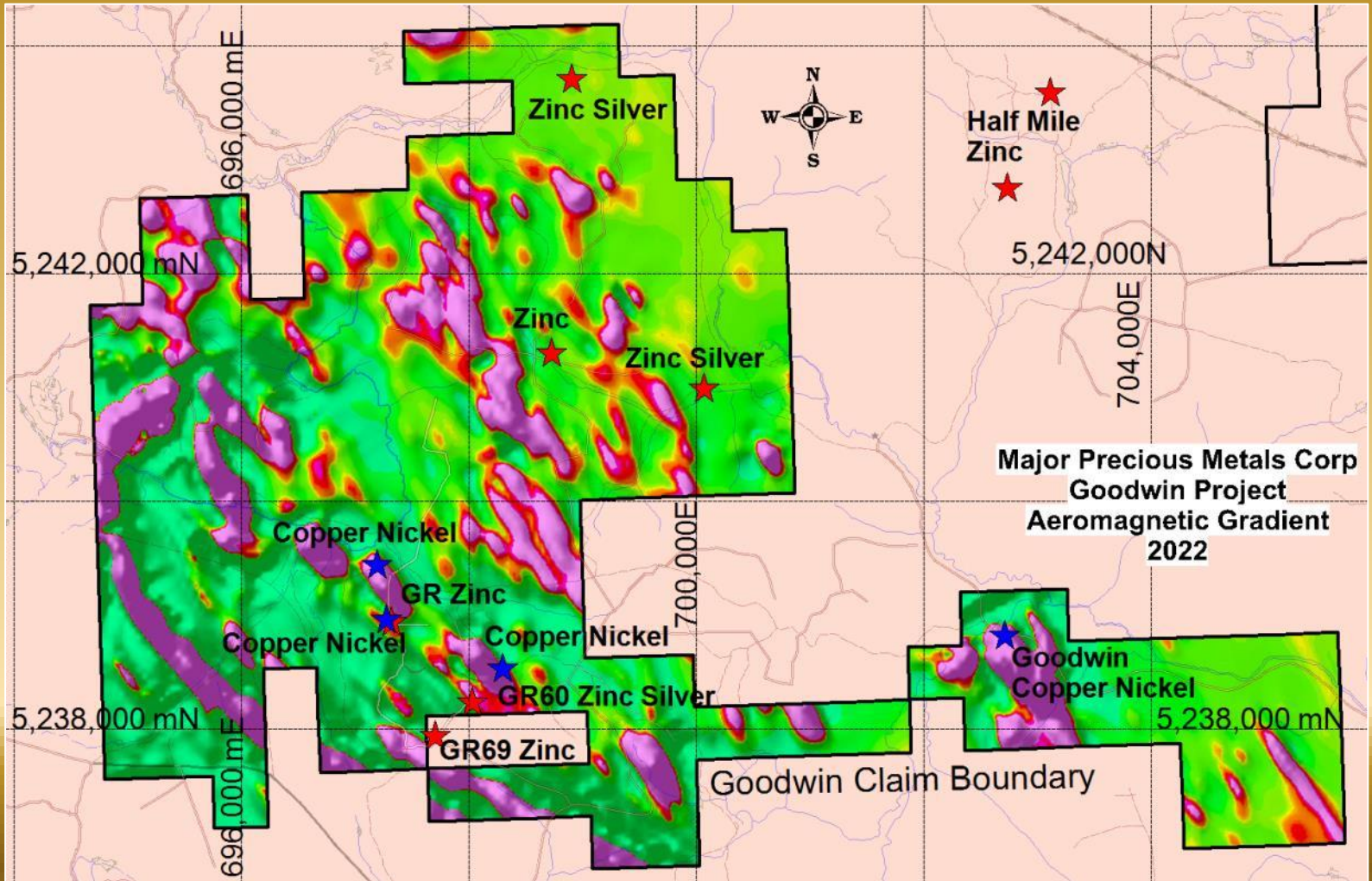
GOODWIN CLAIMS





TSX-V: SXL

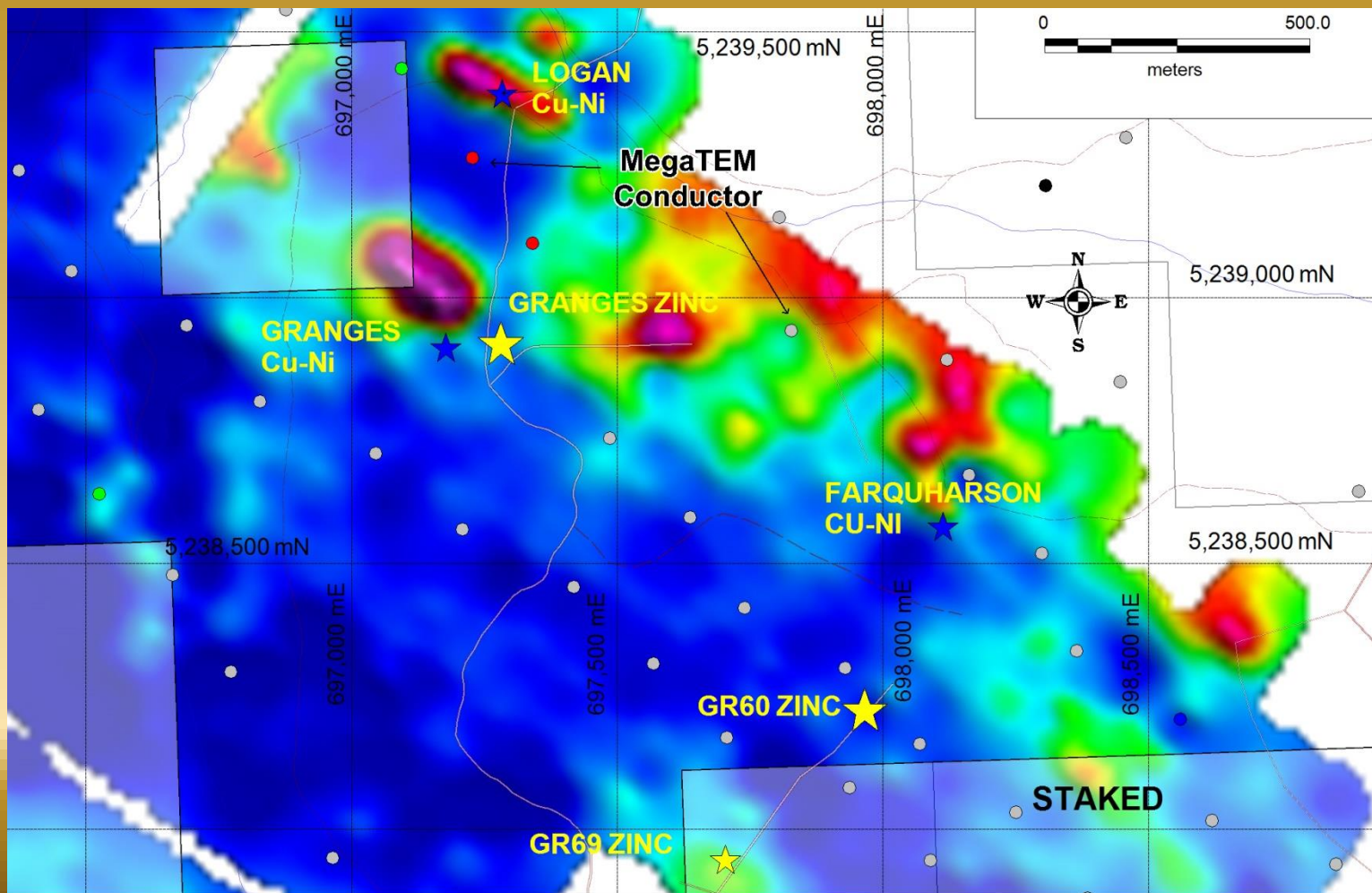
GOODWIN AMAG GRAD





TSX-V: SXL

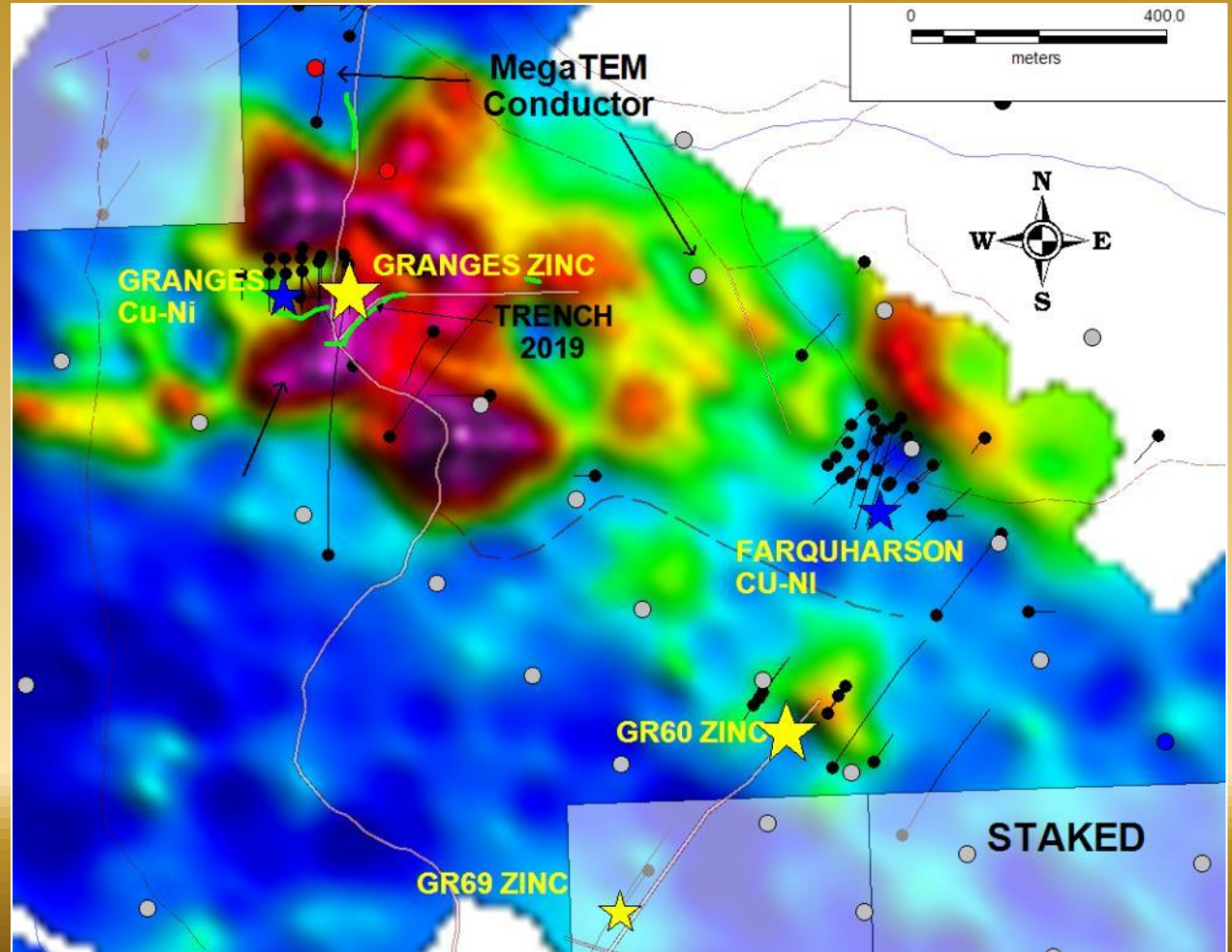
GOODWIN SOILS - COPPER





TSX-V: SXL

GOODWIN SOILS - ZINC



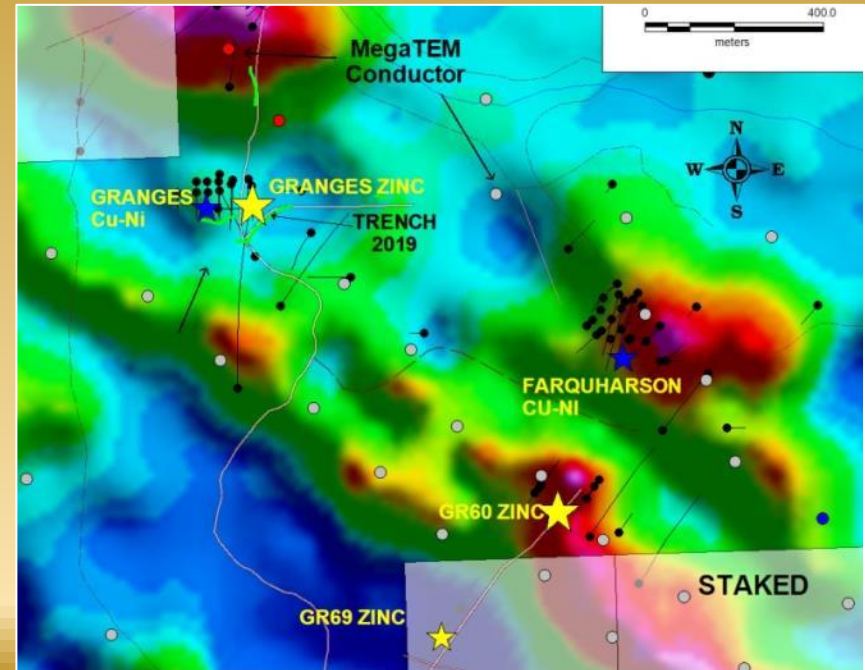
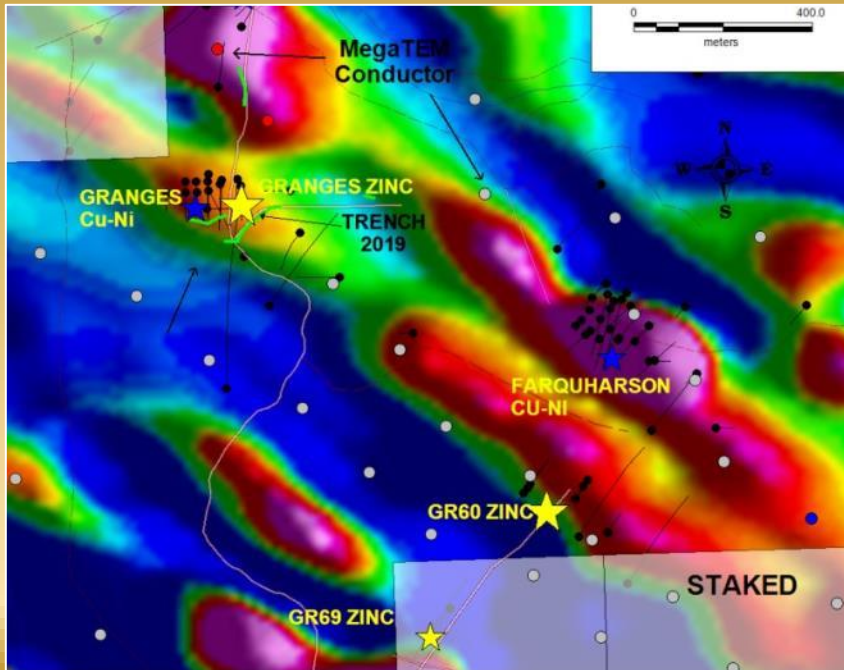


TSX-V: SXL

GOODWIN AIRBORNE

AETOMAGNETICS

CONDUCTIVITY





TSX-V: SXL

A'HEARN VMS ZONES A AND B

A'Hearn Zone A: Drill intercepts up to 29.1% zinc, 16.6% lead, 2.26% copper and 210.34 g/ton silver over 1.5m true thickness (DDH OH-34 file 472948). The A Zone is 152m long at surface and extends 366 m down plunge and dips 65° east.

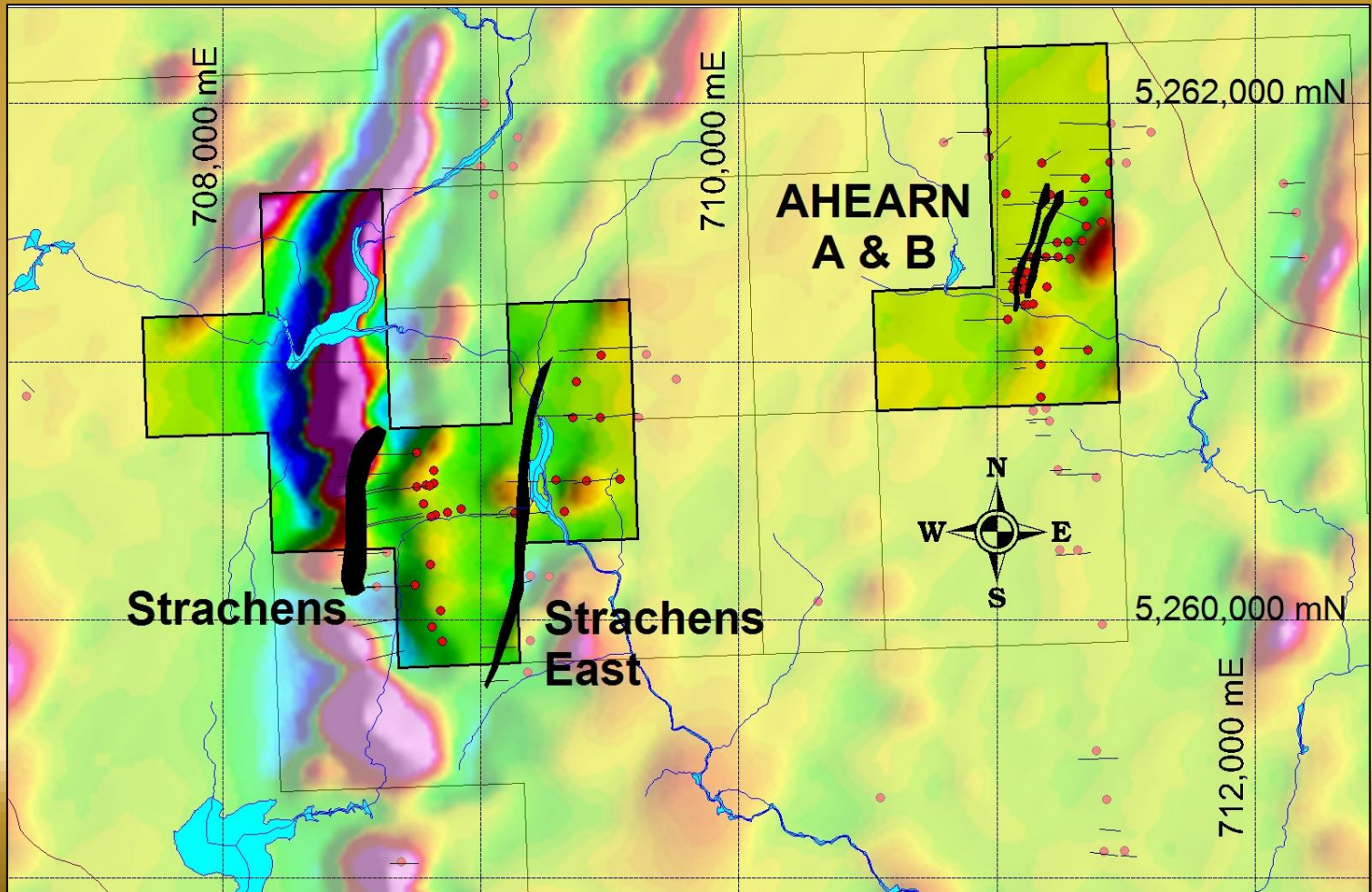
Strachens East Deposit:

The deepest hole 4280-92-01 yielded 6.18% zinc, 0.16% copper, 0.75% lead, and 12.4 g/t silver over 3.35 m at a vertical depth of 365 m.



TSX-V: SXL

A'HEARN AEROMAGNETIC CVD





TSX-V: SXL

Project Status 2024

Project	Work Planned	Target
Jake Lee	Trenching, Diamond Drilling	Gold
Menneval	Diamond Drilling	Gold
Goodwin	Diamond Drilling	Copper, Nickel
Mine Road	Prospecting, Trenching, Diamond Drilling	Zinc, Copper

Contact Mike Taylor
506-623-8960
mike@slamexploration.com