



TSXV: SXL

SLAM Exploration Ltd

New Brunswick

December 2023



TSX-V: SXL

Cautionary Statement

Except for the statements of historical fact contained herein, certain information presented constitutes "forward-looking statements" within the meaning of the United States Private Securities Litigation Reform Act of 1995. Such forward-looking statements, including but not limited to, those with respect to potential expansion of mineralization, future plans for resource estimation and exploration and potential mining method involve known and unknown risks, uncertainties and other factors which may cause the actual results, performance or achievement of Slam Exploration Ltd. to be materially different from any future results, performance or achievements expressed or implied by such forward-looking statements. There can be no assurance that such statements will prove to be accurate as actual results and future events could differ materially from those anticipated in such statements. SLAM disclaims any intention or obligation to update or revise any forward-looking statements, whether as a result of new information, future events or otherwise. Accordingly, readers should not place undue reliance on forward-looking statements.



TSX-V: SXL

Management

CEO: Mike Taylor

CFO: Eugene Beukman

Director: Jakson Inwentash

Director: Brendan Purdy

Director: Theo Van de Linde



TSX-V: SXL

Share Structure

- **TSXV Symbol: SXL**
- **Shares issued: 68.5 M**
- **Warrants: 11.9 M @ \$0.05-\$0.08**
- **Stock options: 4.7 M @ \$0.055-\$0.085**
- **Fully Diluted: 71.8 M**
- **Market Cap: \$2.7 M @ \$0.04**
- **Major Shareholders: 25%**
- **52 Week High/Low: \$0.06/\$0.02**

Contact Mike Taylor

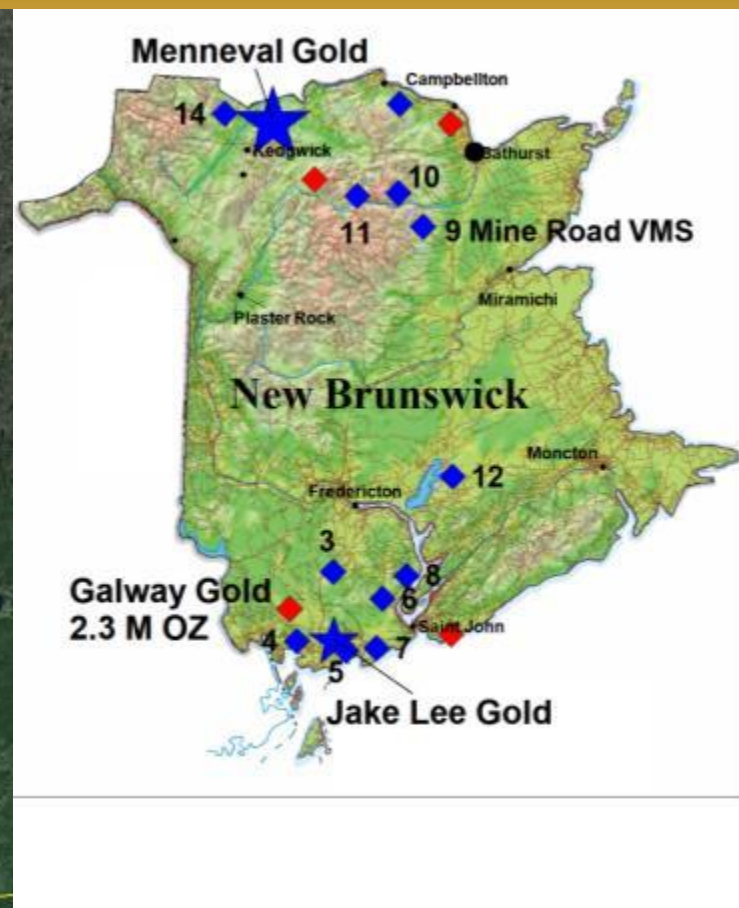
506-623-8960

mike@slamexploration.com



TSX-V: SXL

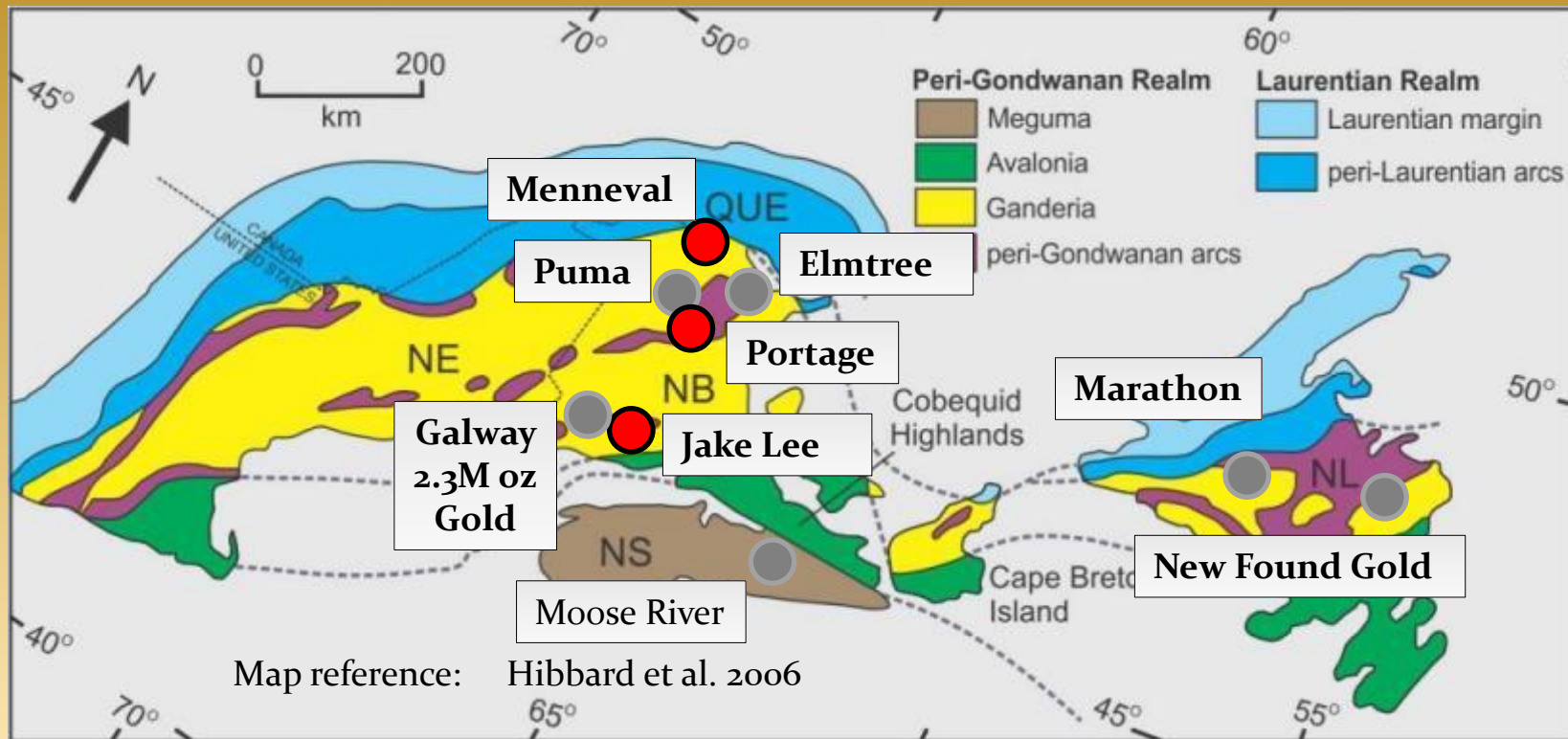
GOLD, CRITICAL ELEMENTS, BASE METALS





TSX-V: SXL

Appalachian Gold – NB-NS-NL



● SLAM Gold Property

● Other Gold Companies



TSX-V: SXL

New Brunswick Projects

No Gold Projects

- 1 Menneval gold
- 2 Jake Lee gold
- 5 Rogers Lake gold
- 6 Highway gold
- 7 Shadow Lake gold

Base Metal Projects

- 9 Mine Road zinc-silver
- 10 A'Hearn zinc-silver
- 11 Portage zinc
- 14 Patapedia silver

Critical Elements

- 9 McKeel REE
- 12 Cumberland REE





TSX-V: SXL

New Brunswick Geology

Gold Projects

1, 2, 3, 4, 5, 7, 13

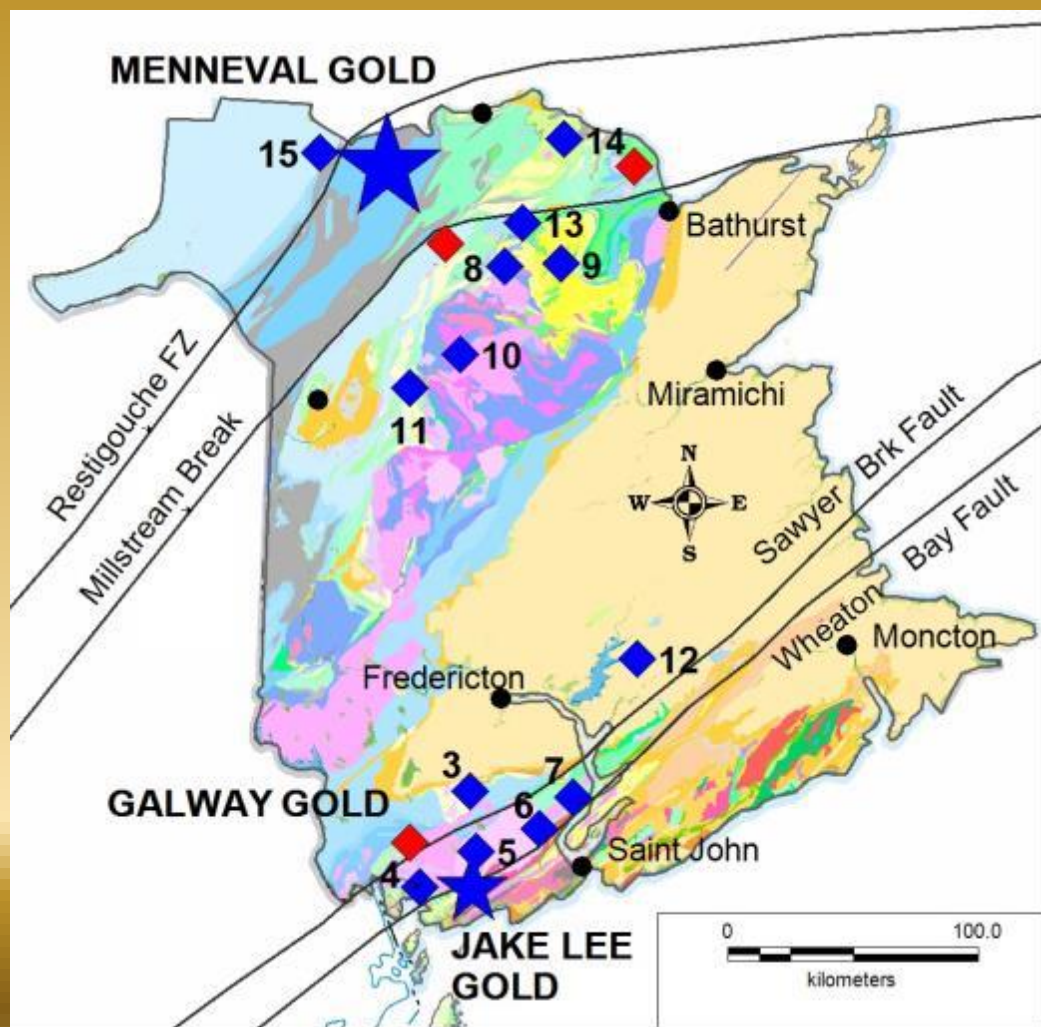
CRITICAL ELEMENTS - REE

6, 7, 12, 14

Base Metals

Zn-Pb-Cu-Ag-Au

9, 10, 11, 15





TSX-V: SXL

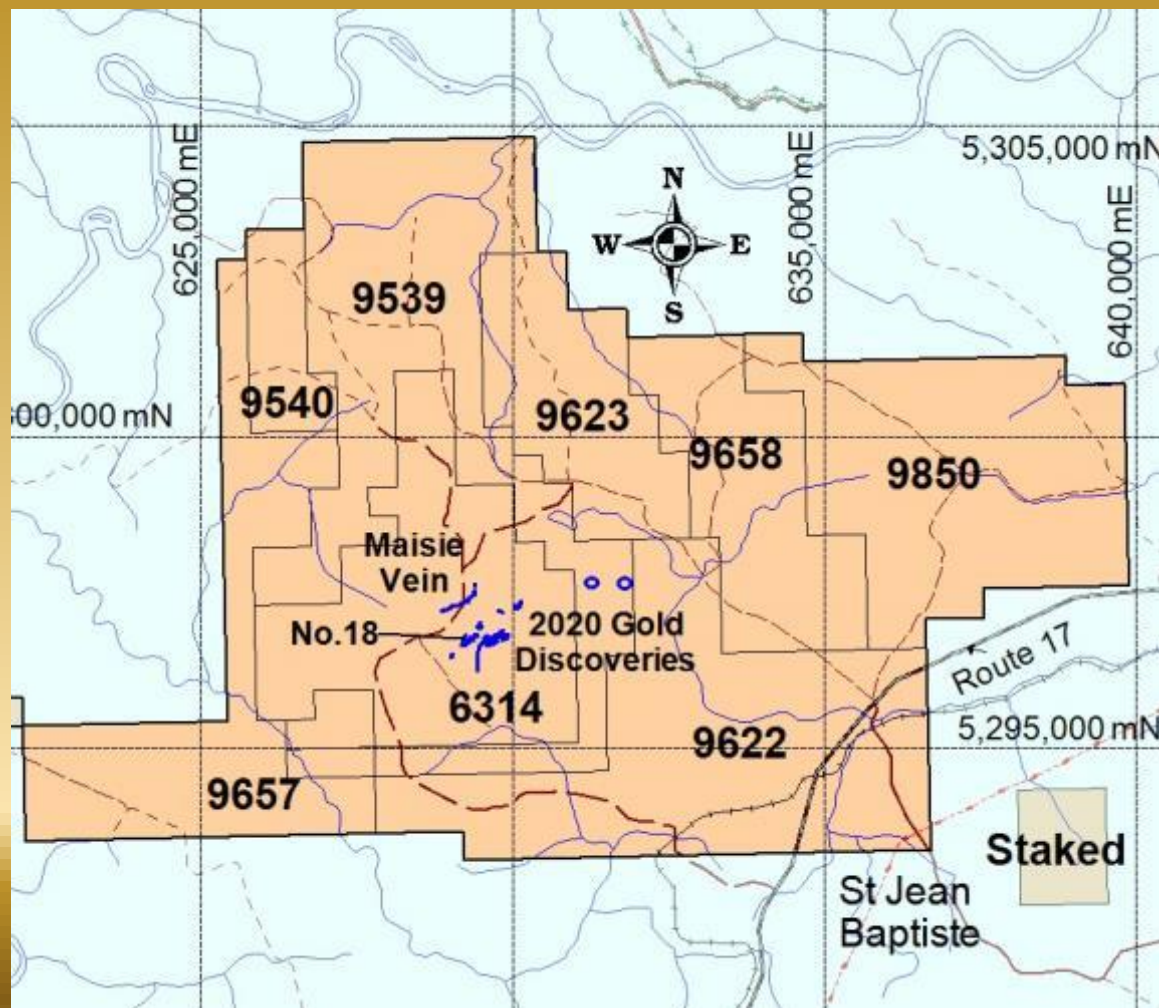
MENNEVAL GOLD PROJECT

Multiple gold discoveries

No 18 vein
3,955 g/t gold/ 0.1 m

Multiple VG sites

8 mineral claims
12,450 hectares
100% SLAM



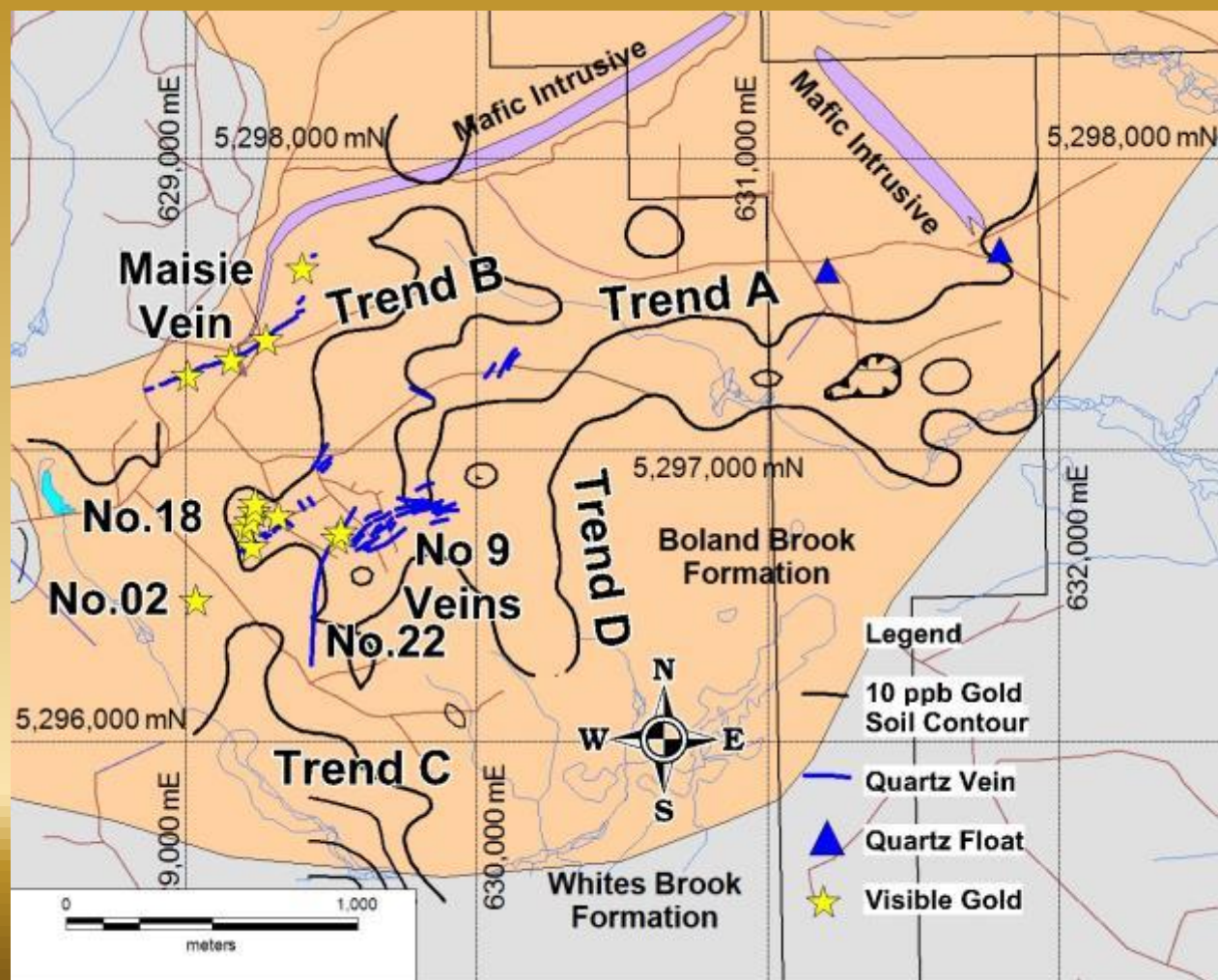


TSX-V: SXL

MENNEVAL GOLD VEINS

Multiple gold veins

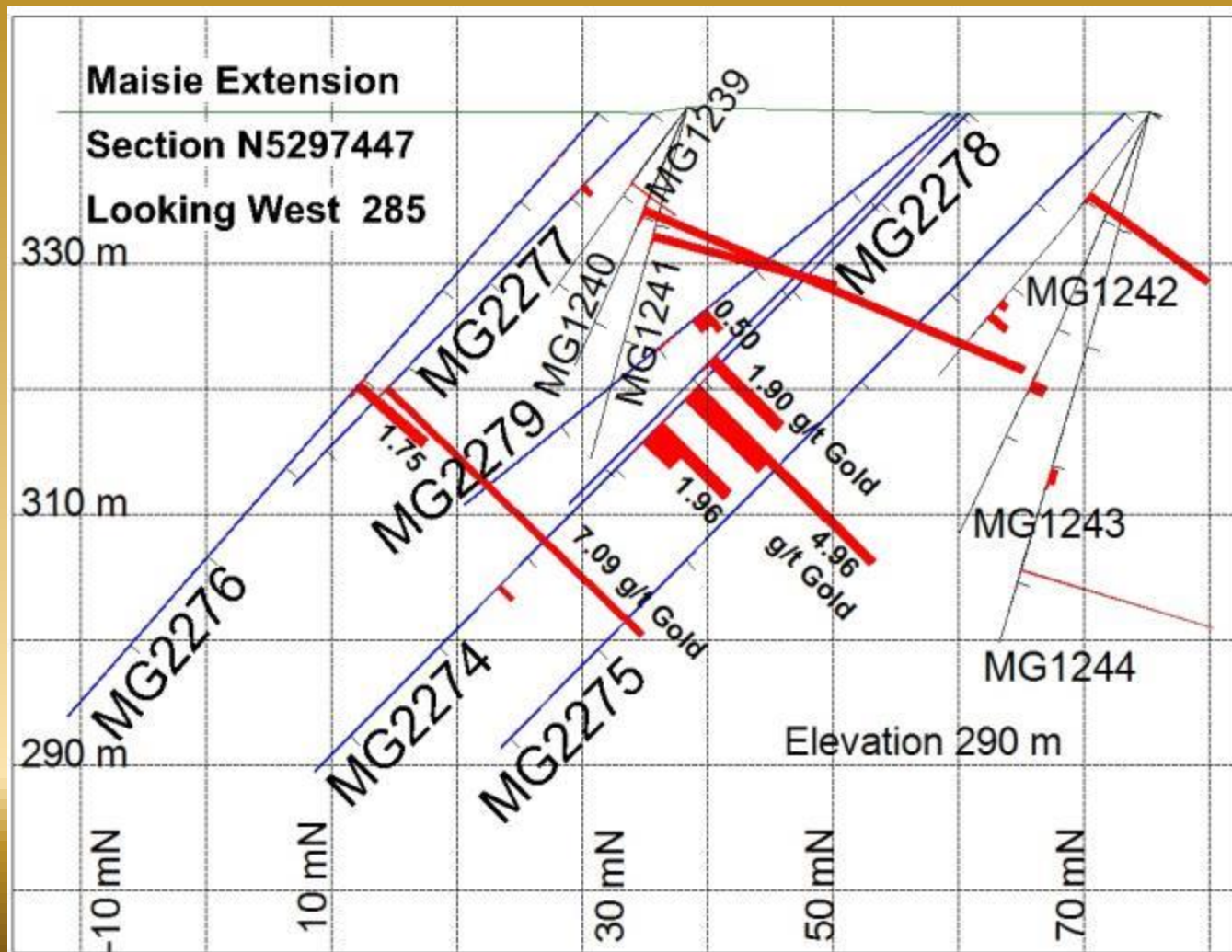
3.000 m soil trend





TSX-V: SXL

MAISIE DRILL SECTION





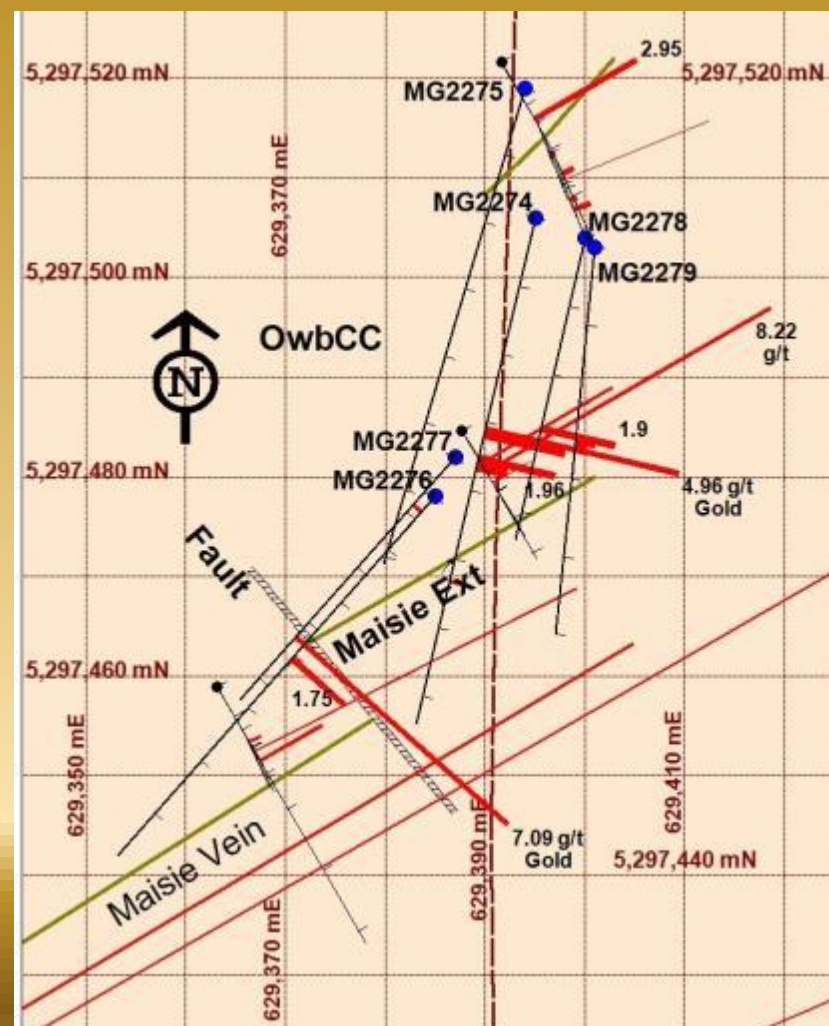
TSX-V: SXL

MAISIE DRILLING PLAN 2022

Six holes drilled in 2022

On east extension of vein

Open eastward & at depth





TSX-V: SXL

SELECTED DRILLING RESULTS GOLD

<u>Zone</u>	<u>Hole ID</u>	<u>From m</u>	<u>interval m</u>	<u>Gold g t</u>
No 18	BG2109	15.43	0.02	10.00
No 18	BG2111	17.15	0.2	162.50
No 18	BG2123	13.8	0.1	48.80
No 18	BG2124	18.83	0.1	23.60
No 18	BG2126	22.25	0.51	56.50
No 18	BG22-30	27.2	0.5	56.90
Maisie	MG1201	5.83	0.25	28.50
Maisie	MG1202	13.85	0.4	8.41
Maisie	MG1203	17.93	0.75	6.93
Maisie	MG1211	19.7	0.45	10.90
Maisie	MG1212	21.6	0.5	9.09
Maisie	MG1221	16.3	0.3	18.40
Maisie	MG1224	13	0.35	46.10
Maisie	MG1225	17.9	0.4	16.90
Maisie	MG1226	24.5	0.3	104.00
Maisie	MG1240	9.2	0.6	8.22
Maisie	MG1352	17.6	0.3	62.80
Maisie	MG1354	9.1	0.3	12.10
Maisie	MG1363	31.09	0.31	121.00
Maisie	MG2069	18.6	0.3	10.30

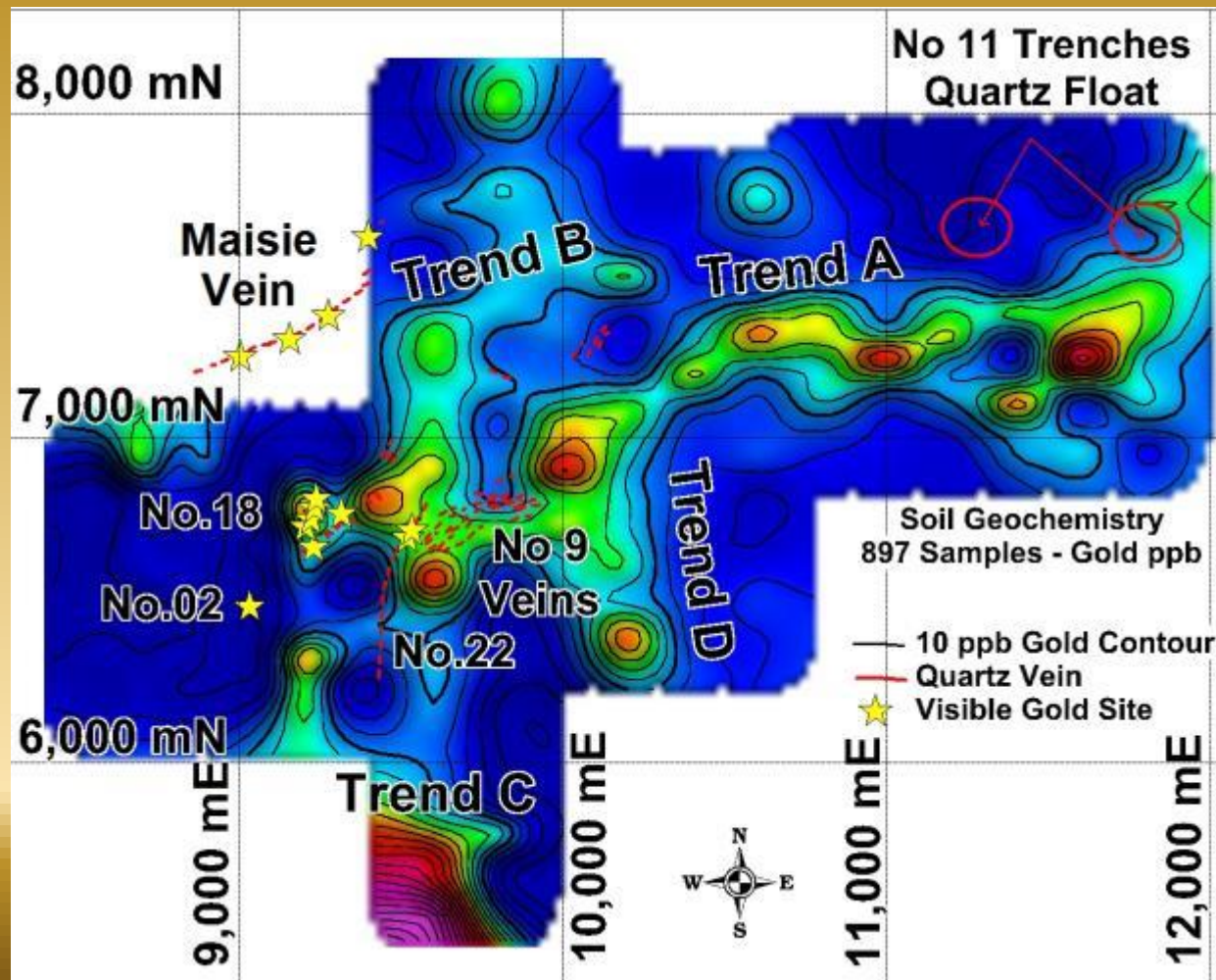


TSX-V: SXL

3.000 METRE GOLD ANOMALY

10 ppb to 683 ppb
gold soil anomalies

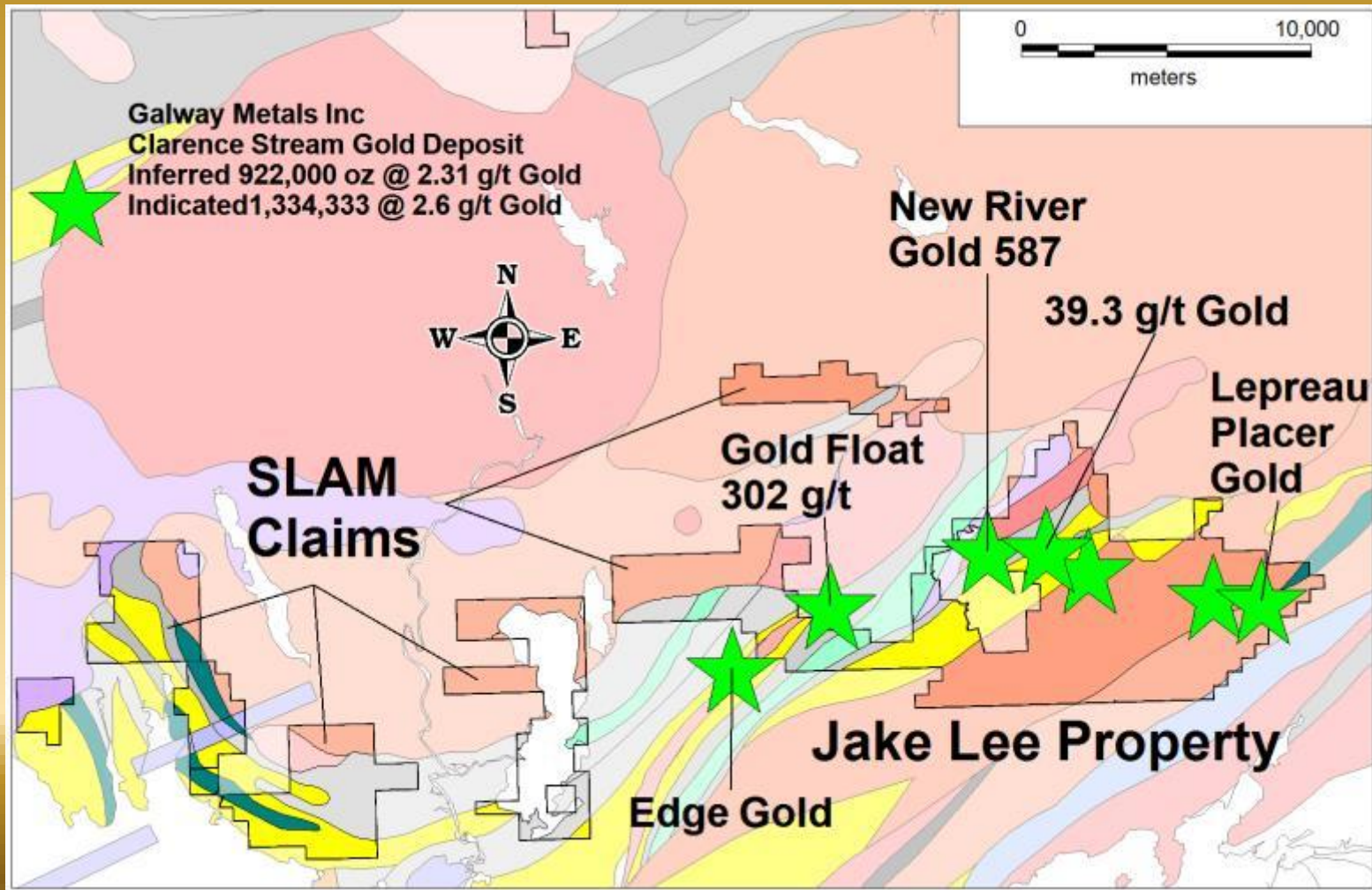
Open south and east





TSX-V: SXL

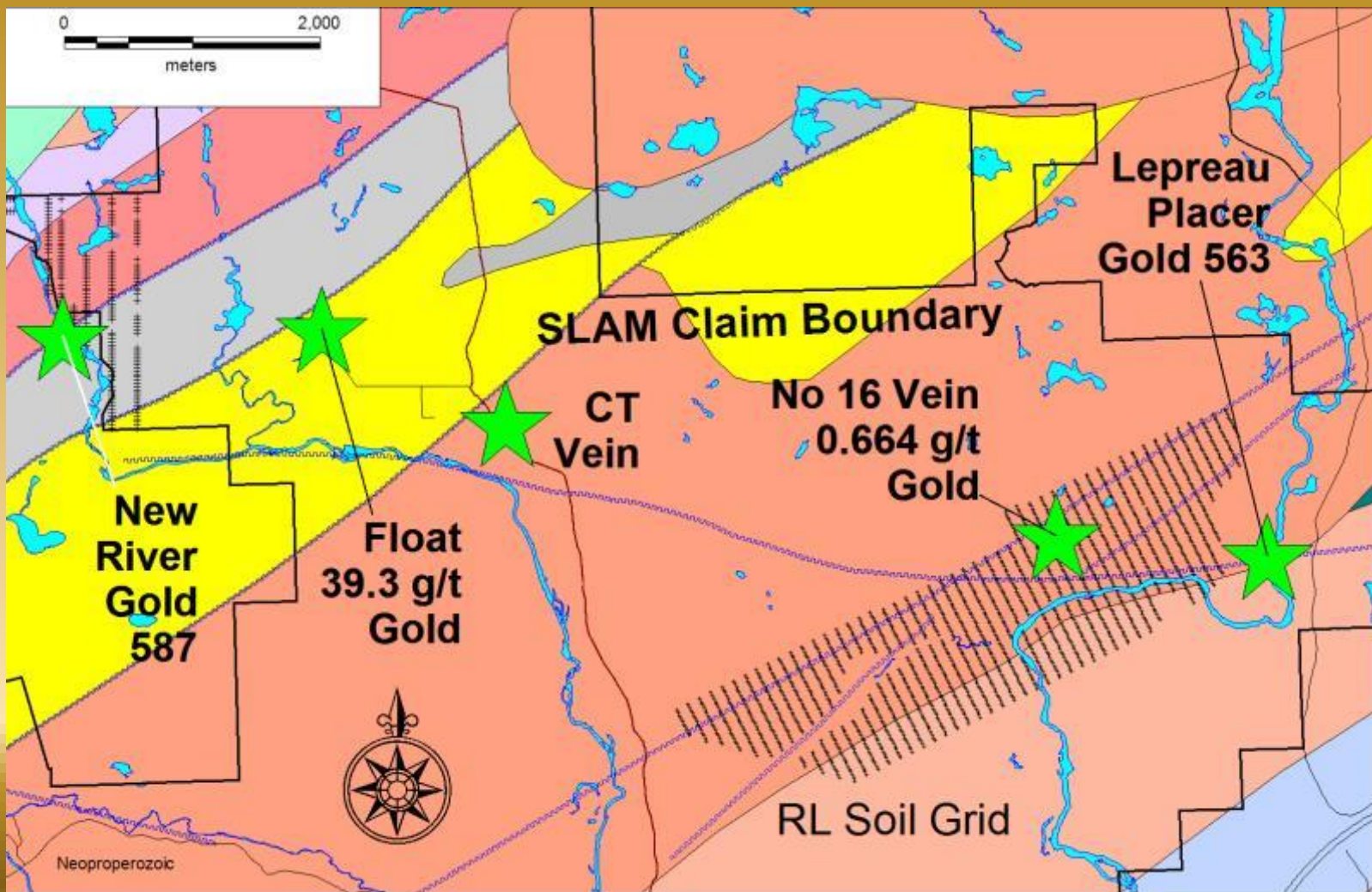
Mineral Claims – Jake Lee Gold Area





TSX-V: SXL

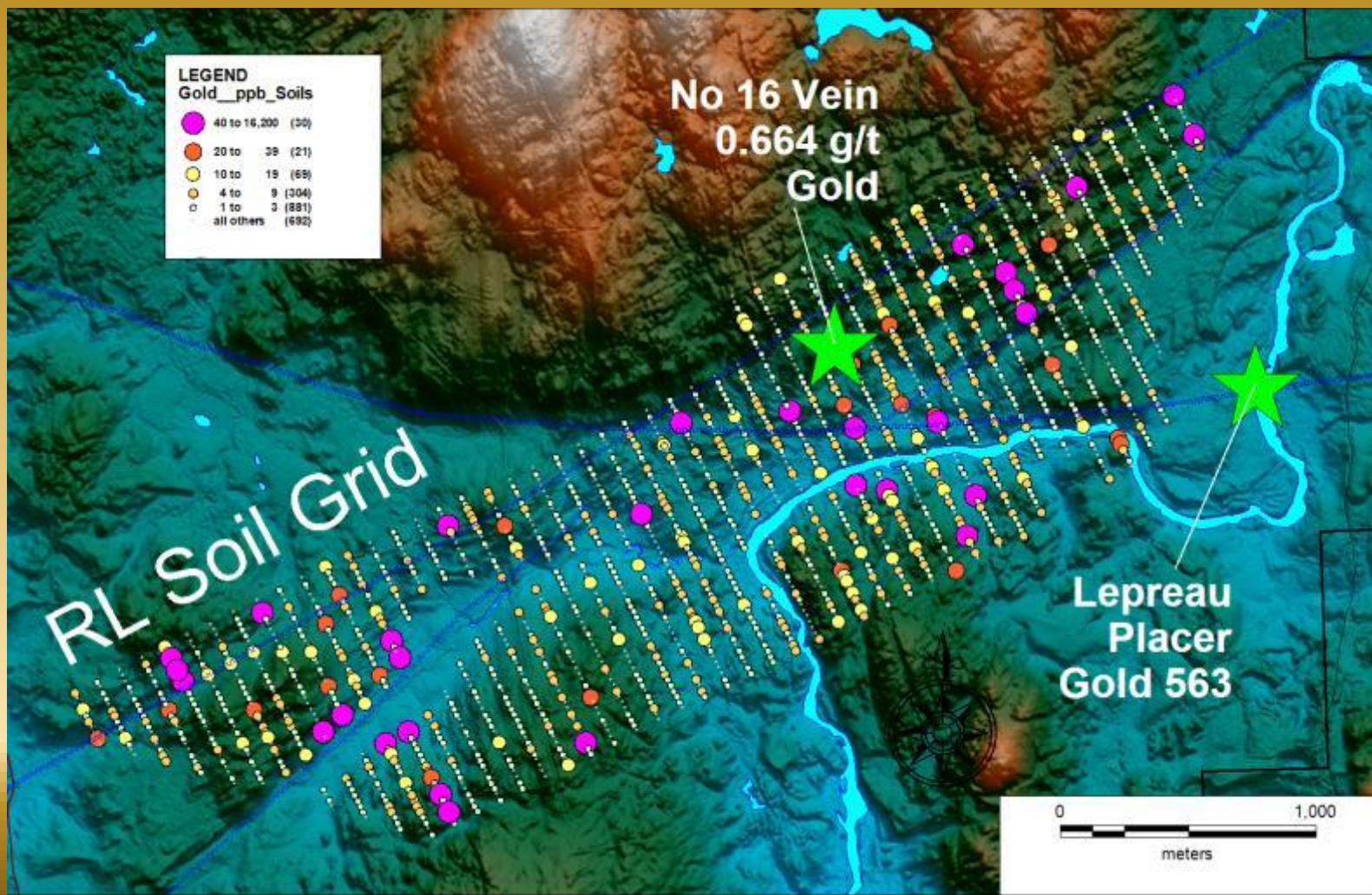
Jake Lee East-Geology-Gold Showings





TSX-V: SXL

RL Soil Grid - Gold - Lidar





TSX-V: SXL

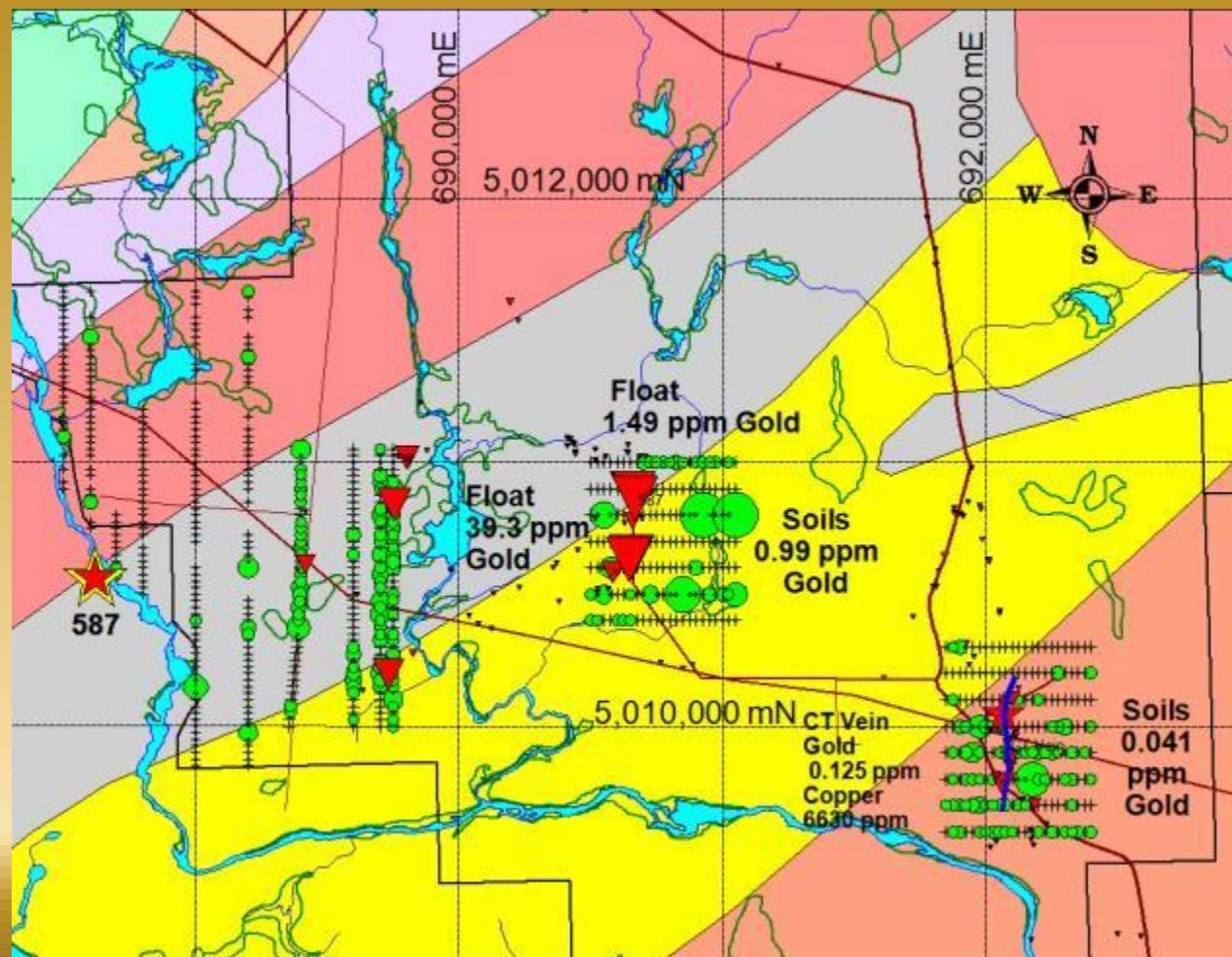
CT Vein Discovery





TSX-V: SXL

CT Vein Discovery Area

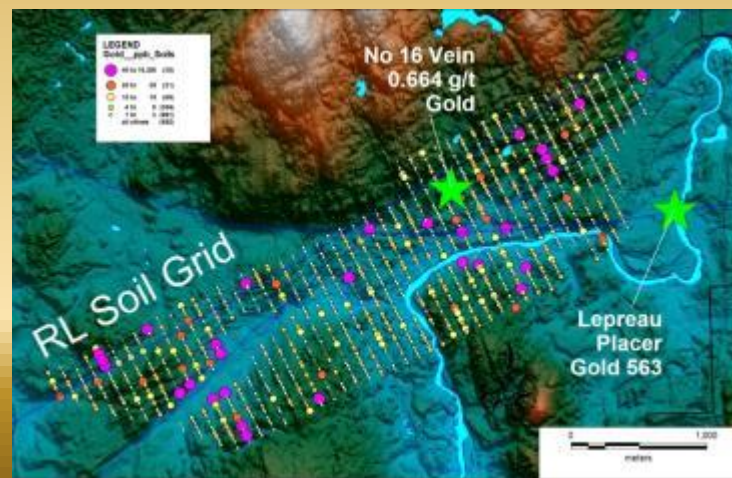
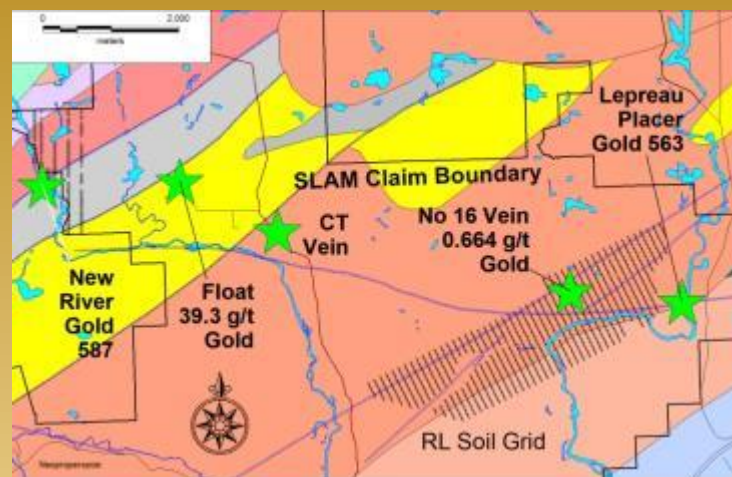




TSX-V: SXL

Jake Lee - Gold Targets

Target	Description
39 G/T Float*	4 float 1.51 to 39.3 g/t gold
No 16 vein*	1 m wide gold-bearing qz vein
CT Vein*	8 m wide vein-anomalous Cu, Au
New River	587 Placer Gold
Lepreau	563 Placer Gold
RL Soils	50 samples @ 0.02 to 0.20 g/t gold
RL Soils	1 soil sample @ 16.2 g/t gold
*2022 Discovery by SLAM	



Trenching and drilling permits in place.



TSX-V: SXL

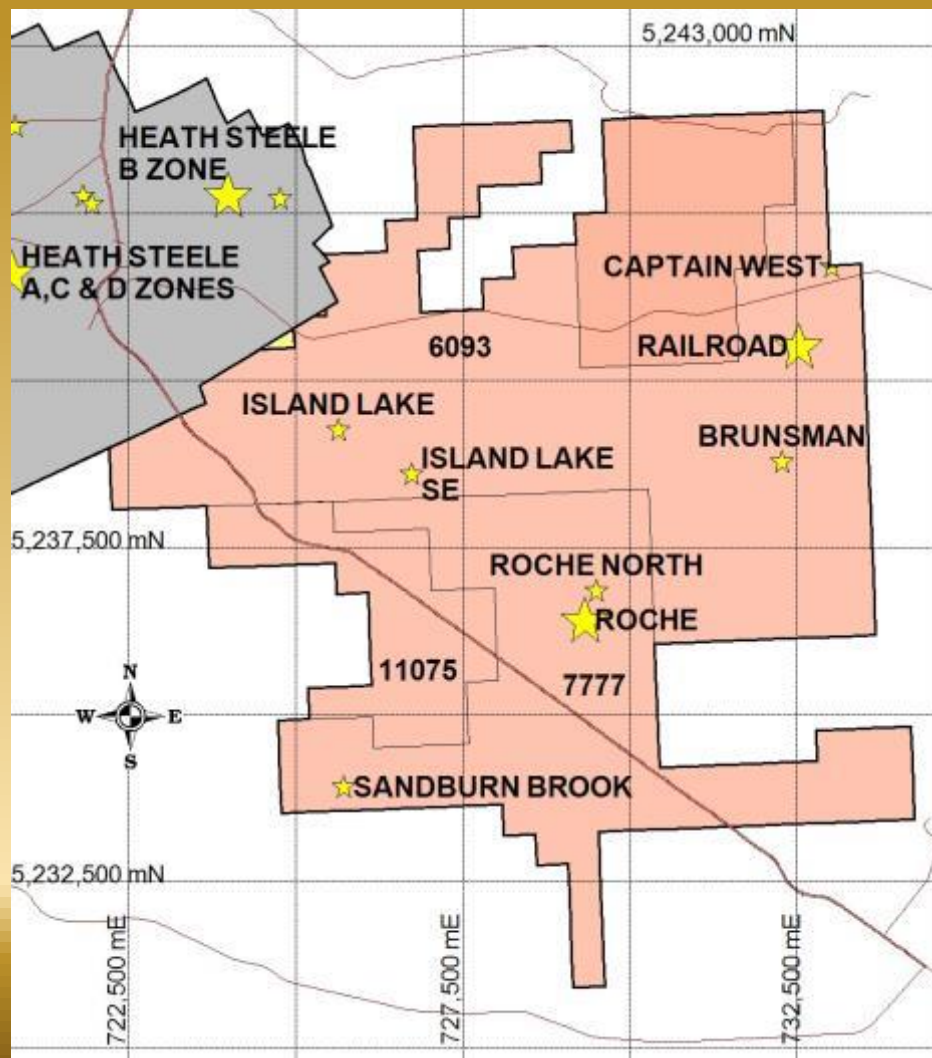
MINE ROAD MINERAL CLAIMS

8230 Hectares

Adjacent Heath Steele
Mine Property

7 VMS Mineral
Occurrences

Zinc-Lead-Copper-Silver





TSX-V: SXL

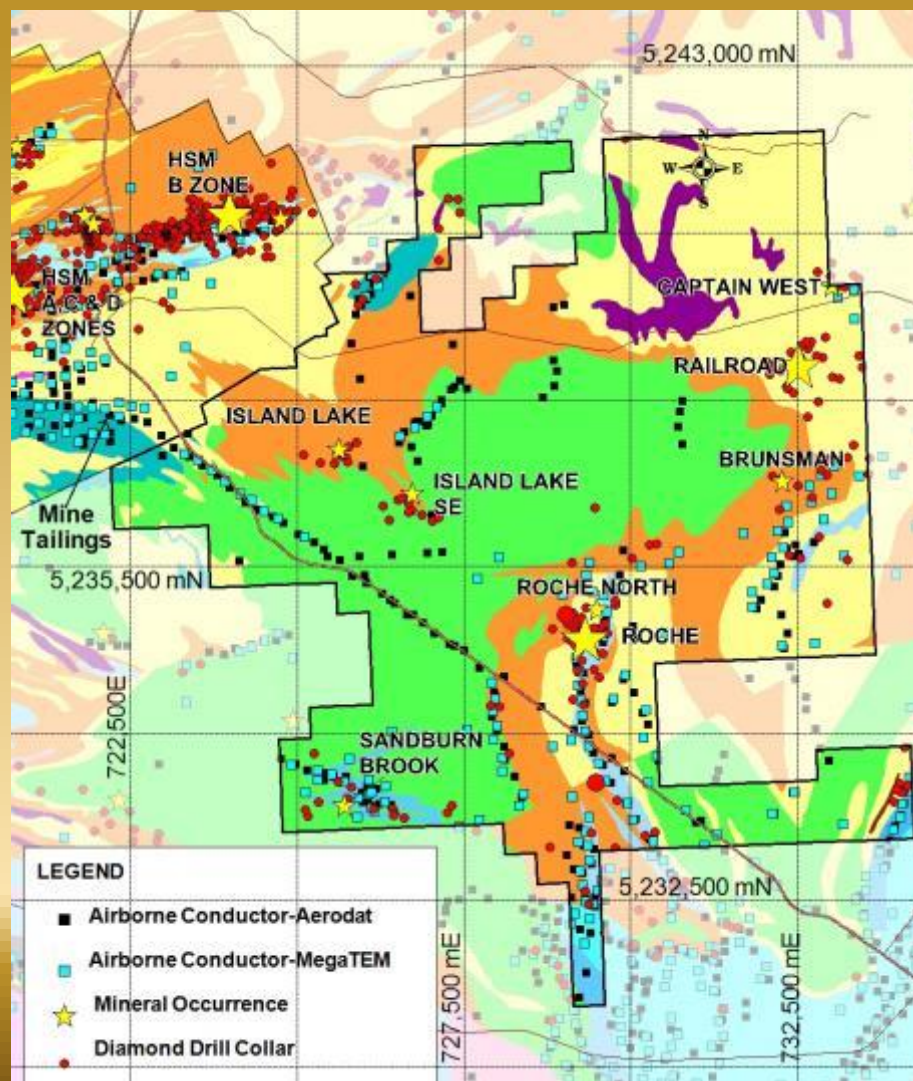
MINE ROAD GEOLOGY

Railroad Zone: Core intervals to 14.51% zinc, 5.86% lead, 0.67% copper, 139.9 g/t silver

Roche Zone

More copper-rich and open at depth

Fold repetitions of strata that host BMS No 12 and HSM ore bodies



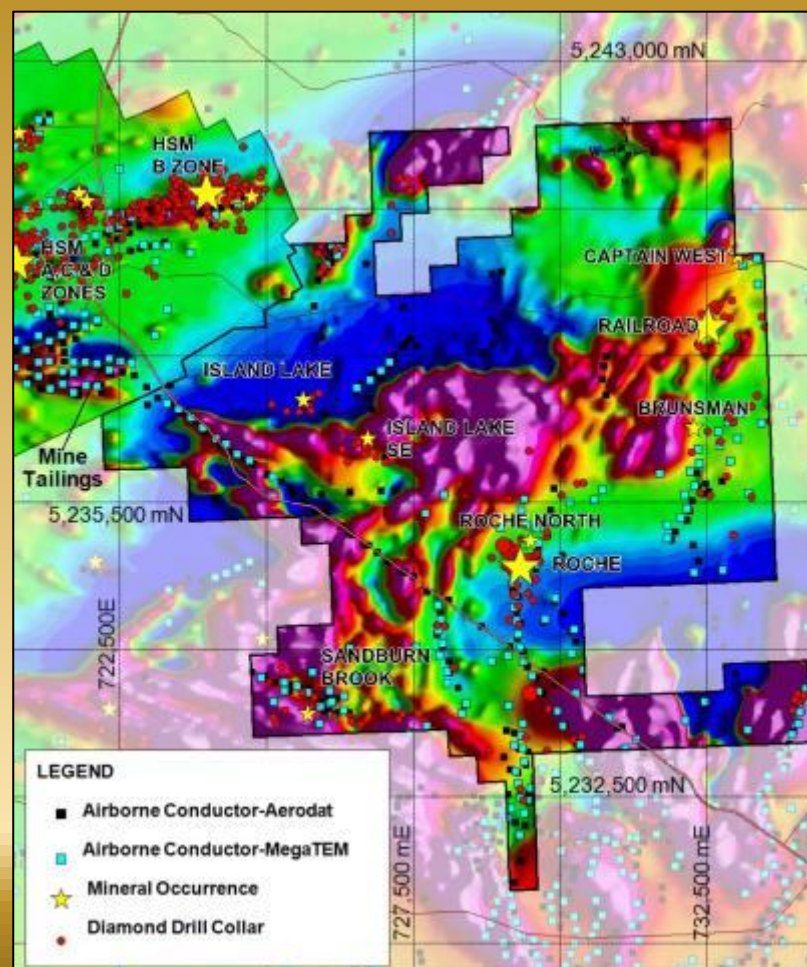
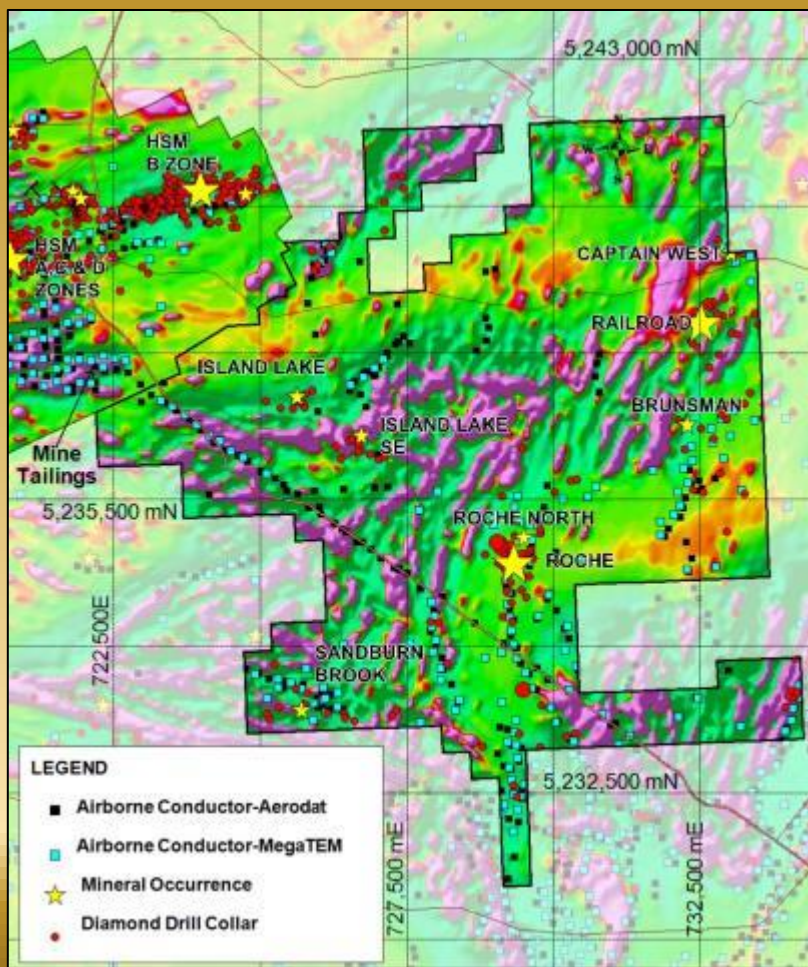


TSX-V: SXL

MINE ROAD AEROMAGNETICS

Fugro Gradient Mag

Aerodat Total Field Mag





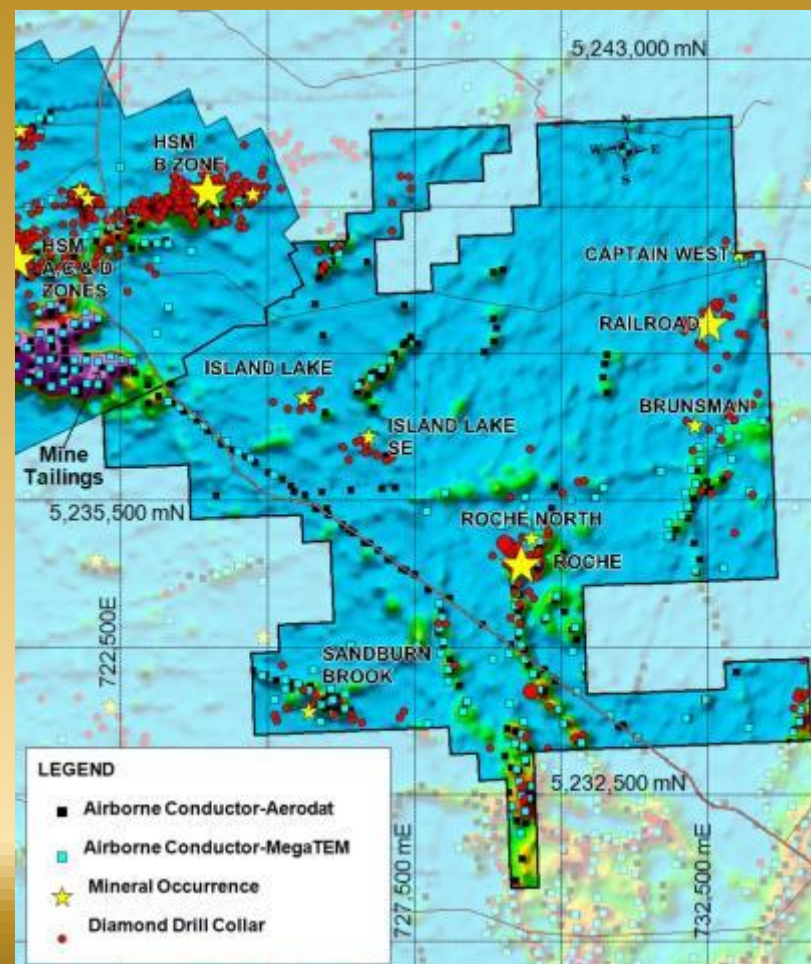
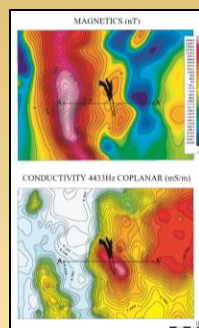
TSX-V: SXL

MINE ROAD CONDUCTIVITY

Mine Road scale comparison
to Brunswick 12 (BMS 12)

BMS 12
Magnetics

BMS 12
Conductivity





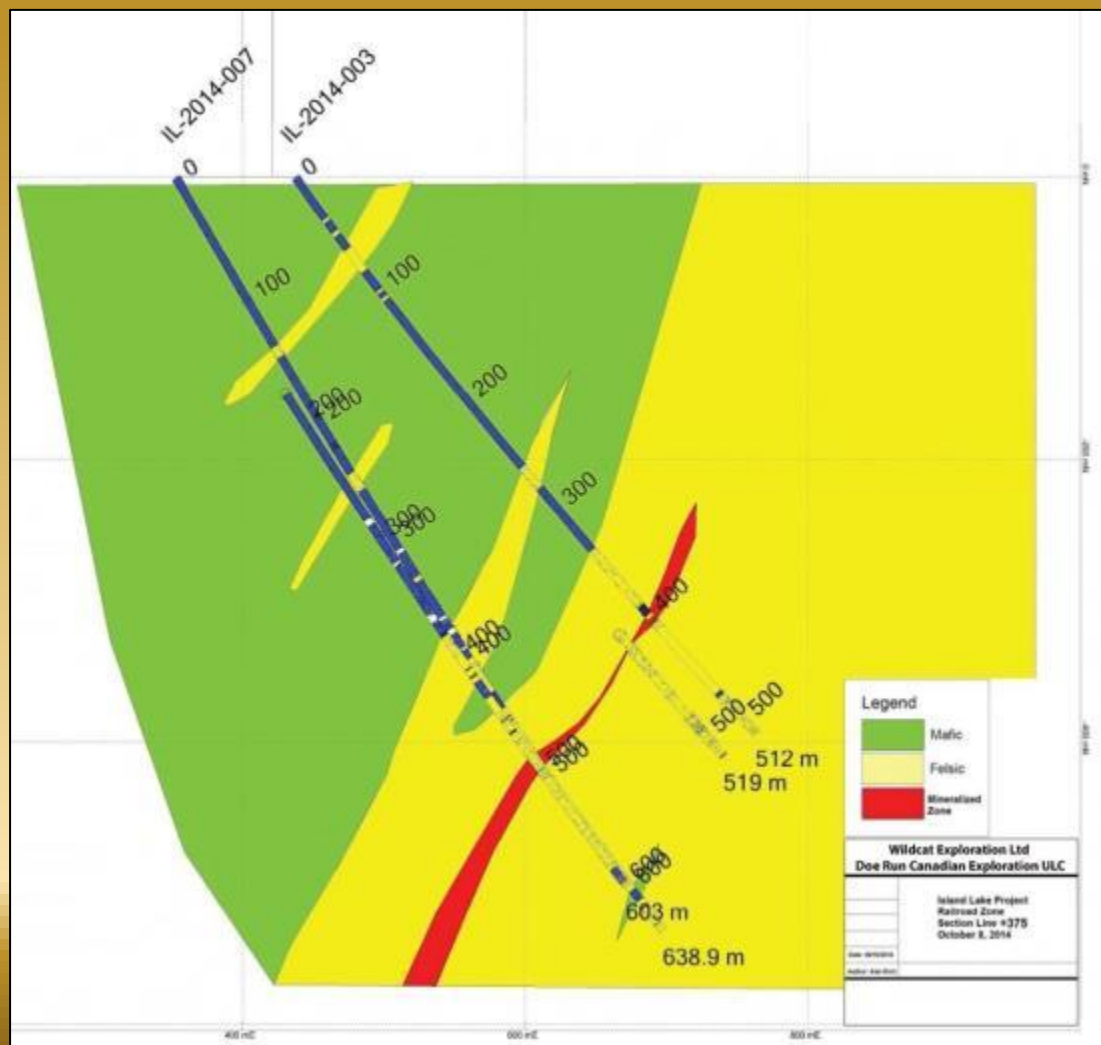
TSX-V: SXL

RAILROAD ZONE X SECTION 375

Cross section 375 N

DDH IL14-003

9.0 metres @ 14.51% zinc,
5.86% lead, 0.67% copper
and 139.9 g/t silver



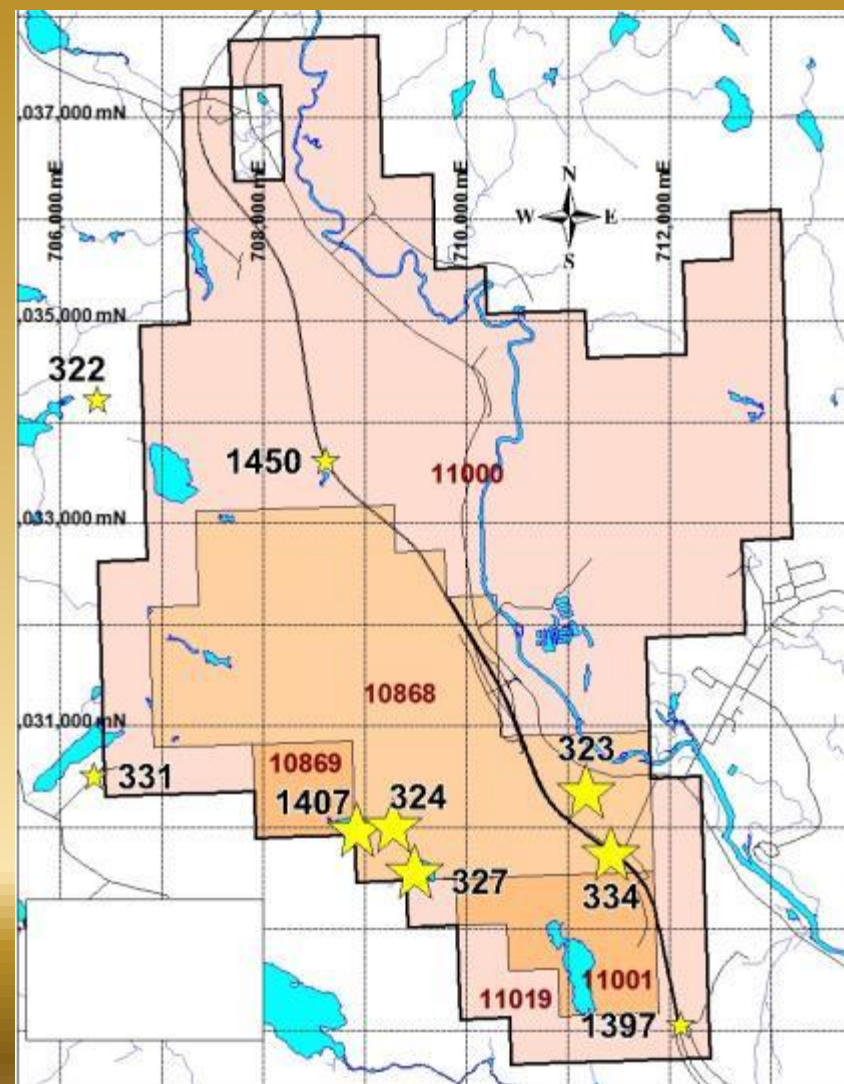


TSX-V: SXL

Highway-Claims – Mineral Occurrences

100% SLAM Holdings

- 4 mineral claims -178 units
- 3911 hectares
- **Previous Work**
- 8 mineral occurrences include gold, cobalt, copper, tin, molybdenum, zinc, bismuth and silver
- Anomalous gold in soil geochemical survey
- **IOCG Model**
- Widespread presence of magnetite associated with gold, copper and other metals including REE's.





TSX-V: SXL

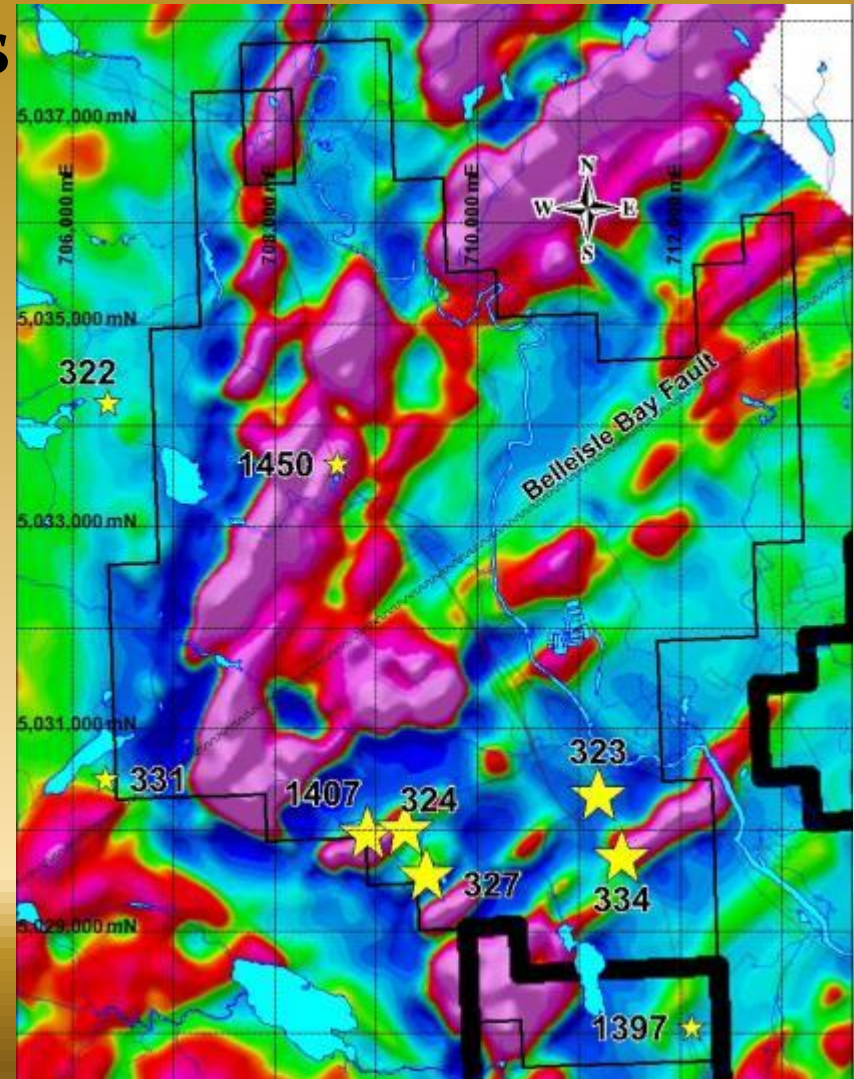
Highway Mag CVD₁ – Mineral Occurrences

NB Mineral Occurrence File

334 Highway zone –2.33 g/t gold over 6.7 m in channel sample. Never drilled.

#323 Mathews Brook zinc-copper-silver zone 1 to 4 m core intervals, 400 m strike length- 24 diamond drill holes in 1956. No assays published.

1397 Quartz-carbonate vein NNE-trending (035) fault zone flanking Neoproterozoic granite.





TSX-V: SXL

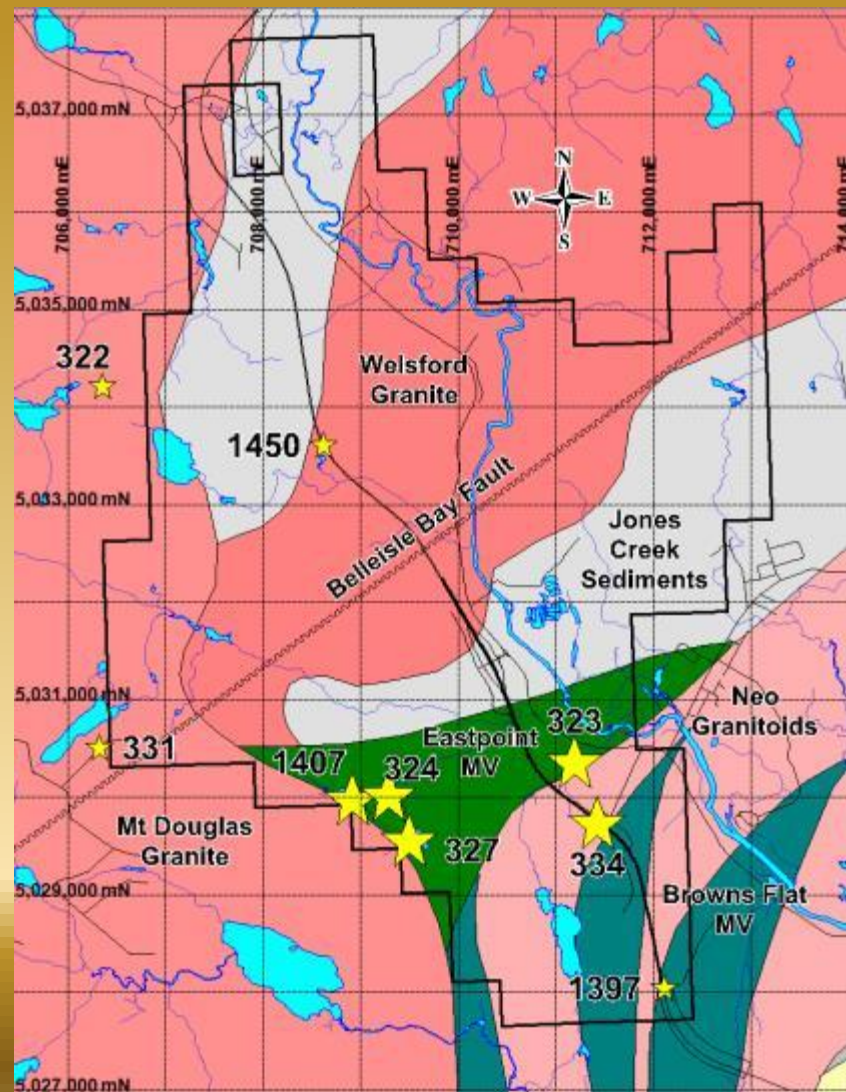
Highway Geology-Mineral Occurrences

NB Mineral Occurrence

#324 West Brook – 8.30% zinc, 41.90 g/t silver over 3.1 m core length. Massive magnetite over core lengths to 3 m.

#327 Deep Lake - 0.64% cobalt over 0.36 m correlates with an 800 m cobalt anomaly.

1407 West Lake - 1.3 g/t gold /1.5 m, 0.29% tin /3.1 m and 0.265% tin+0.33% copper /3.1 m. Correlates with # 324 above.





TSX-V: SXL

Critical Elements – Peninsula Location

Lithium Resources

Corvette

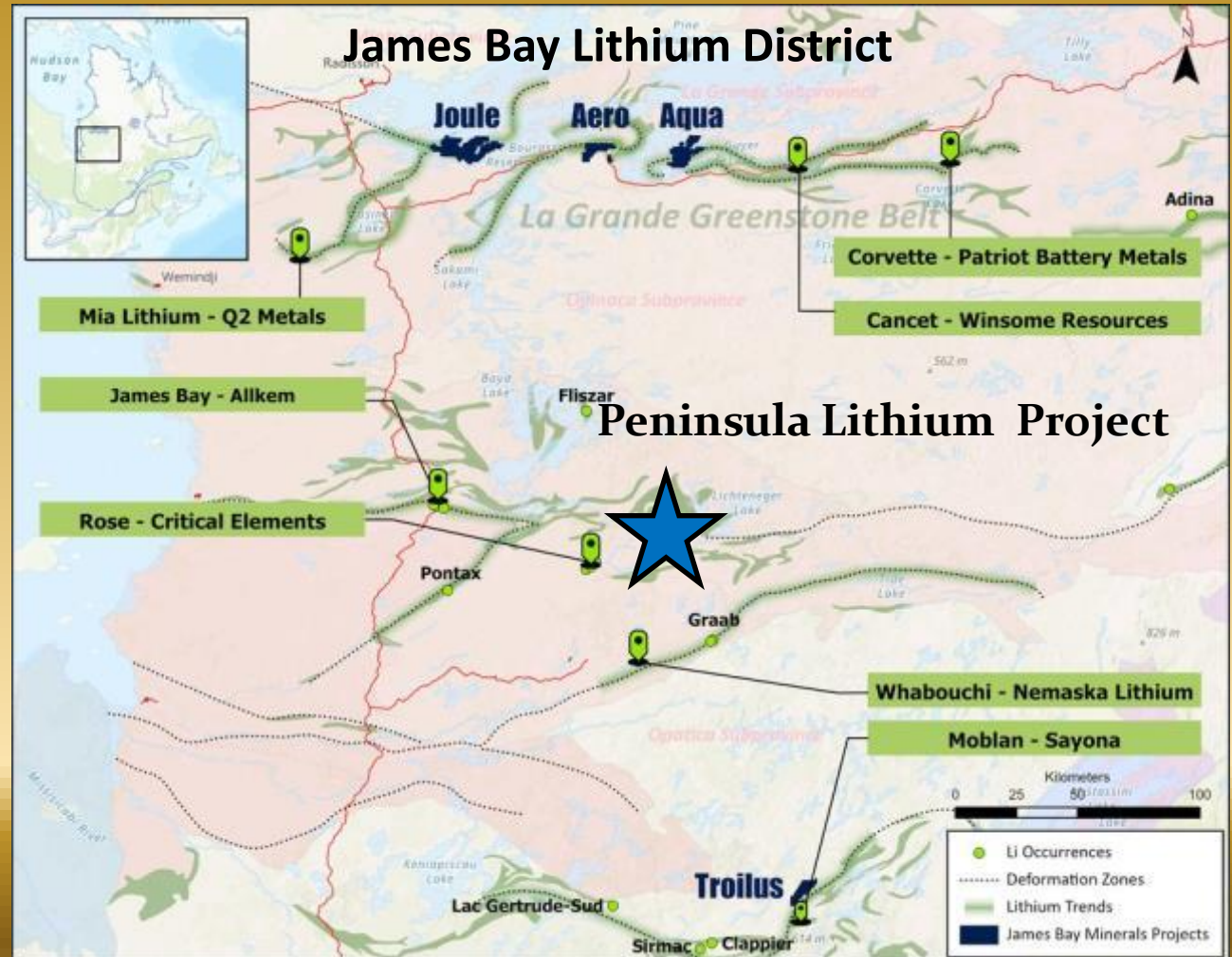
109M tonnes at
1.42% Li_2O

Rose

60M tonnes at
0.90% Li_2O

Whabouchi

37M tonnes at
1.30% Li_2O

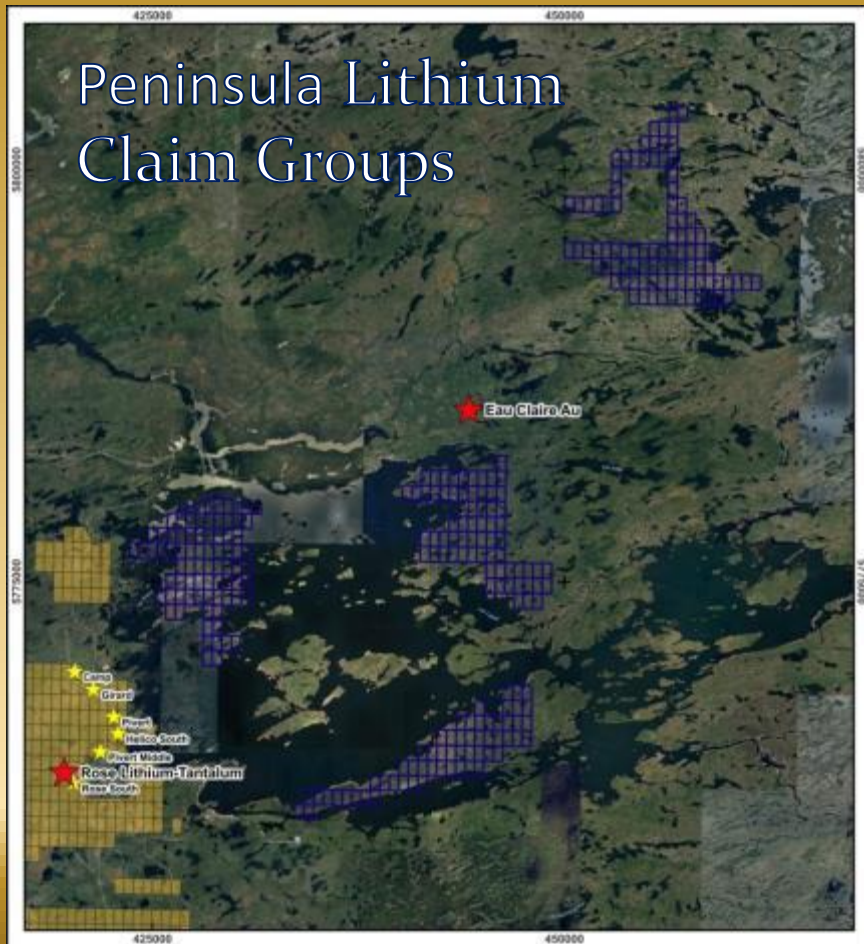




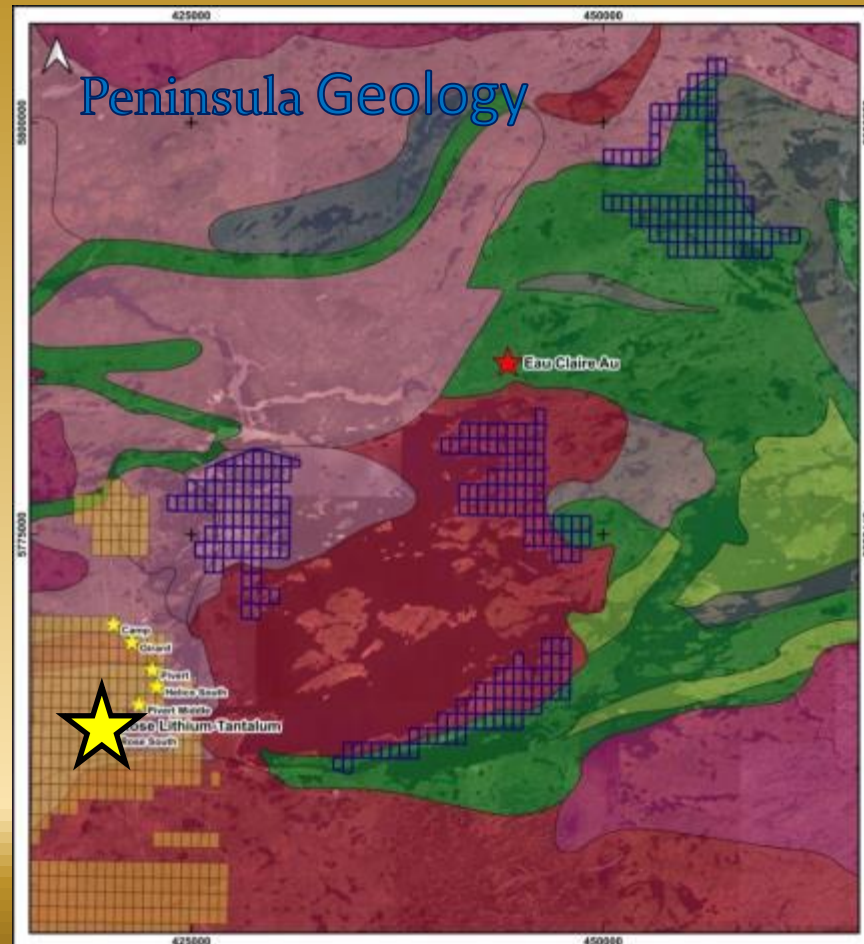
TSX-V: SXL

Peninsula Lithium Project

Peninsula Lithium Claim Groups



Peninsula Geology





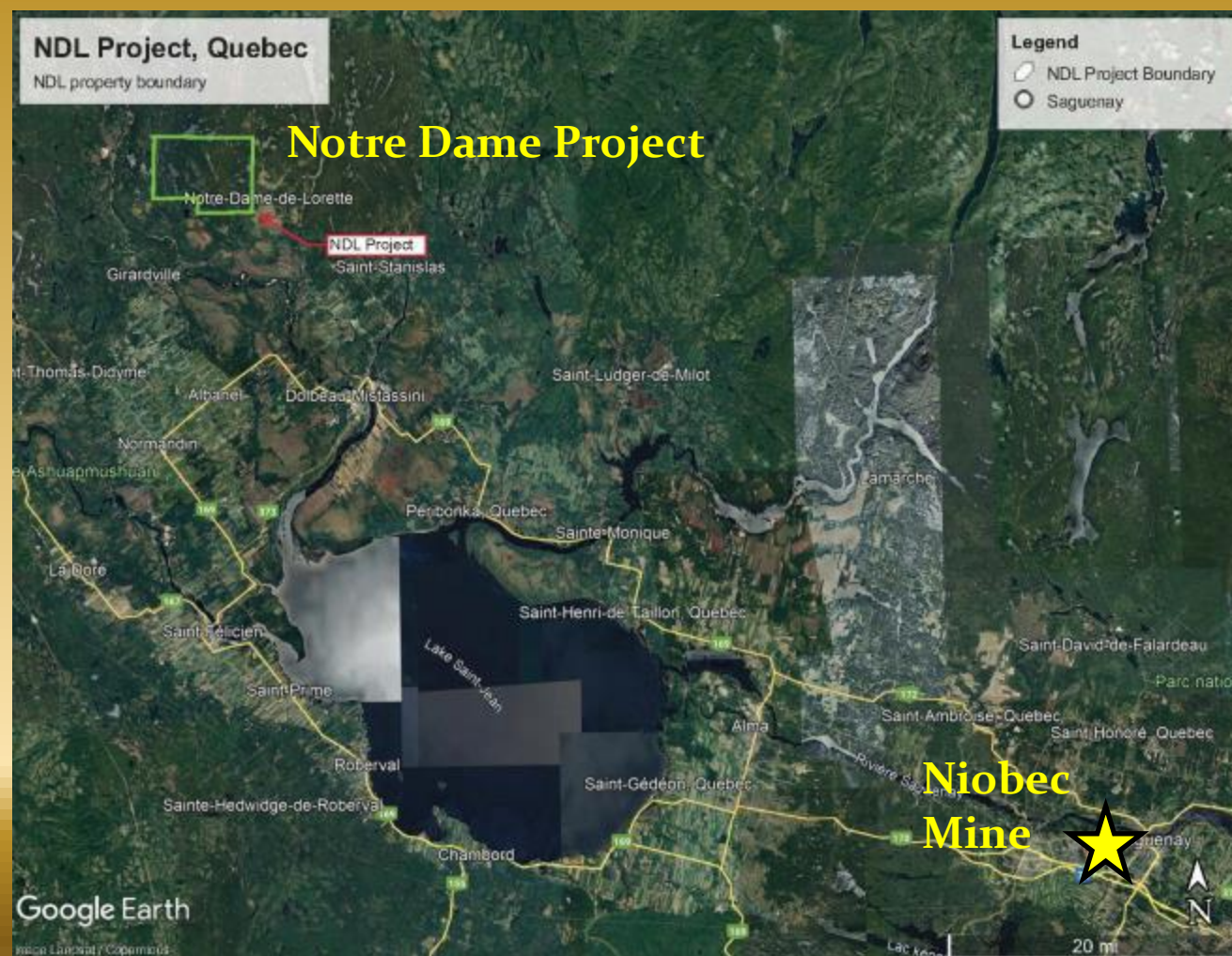
TSX-V: SXL

Notre Dame Niobium Project

66 mineral claims
cover 6,404
hectares (64 km²)

Road accessible

110 km northwest
of Niobec Mine

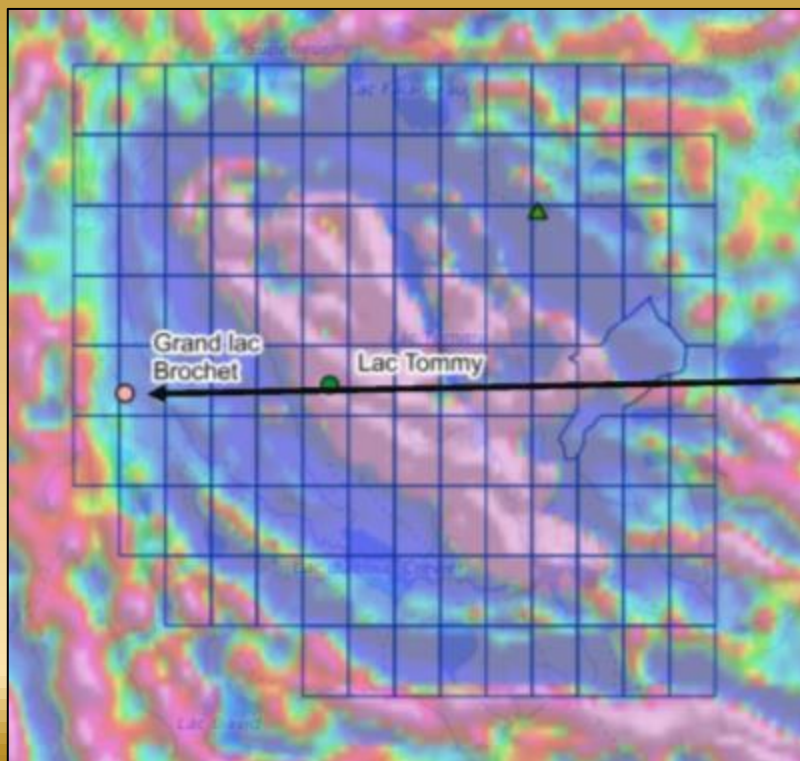




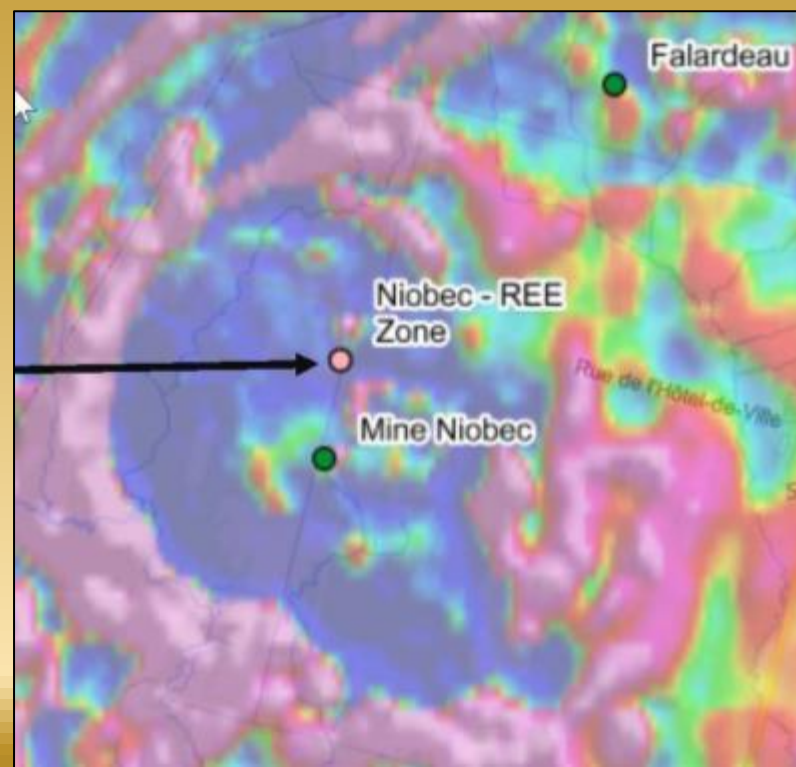
TSX-V: SXL

Notre Dame Niobium Aeromagnetics

Notre Dame Magnetics



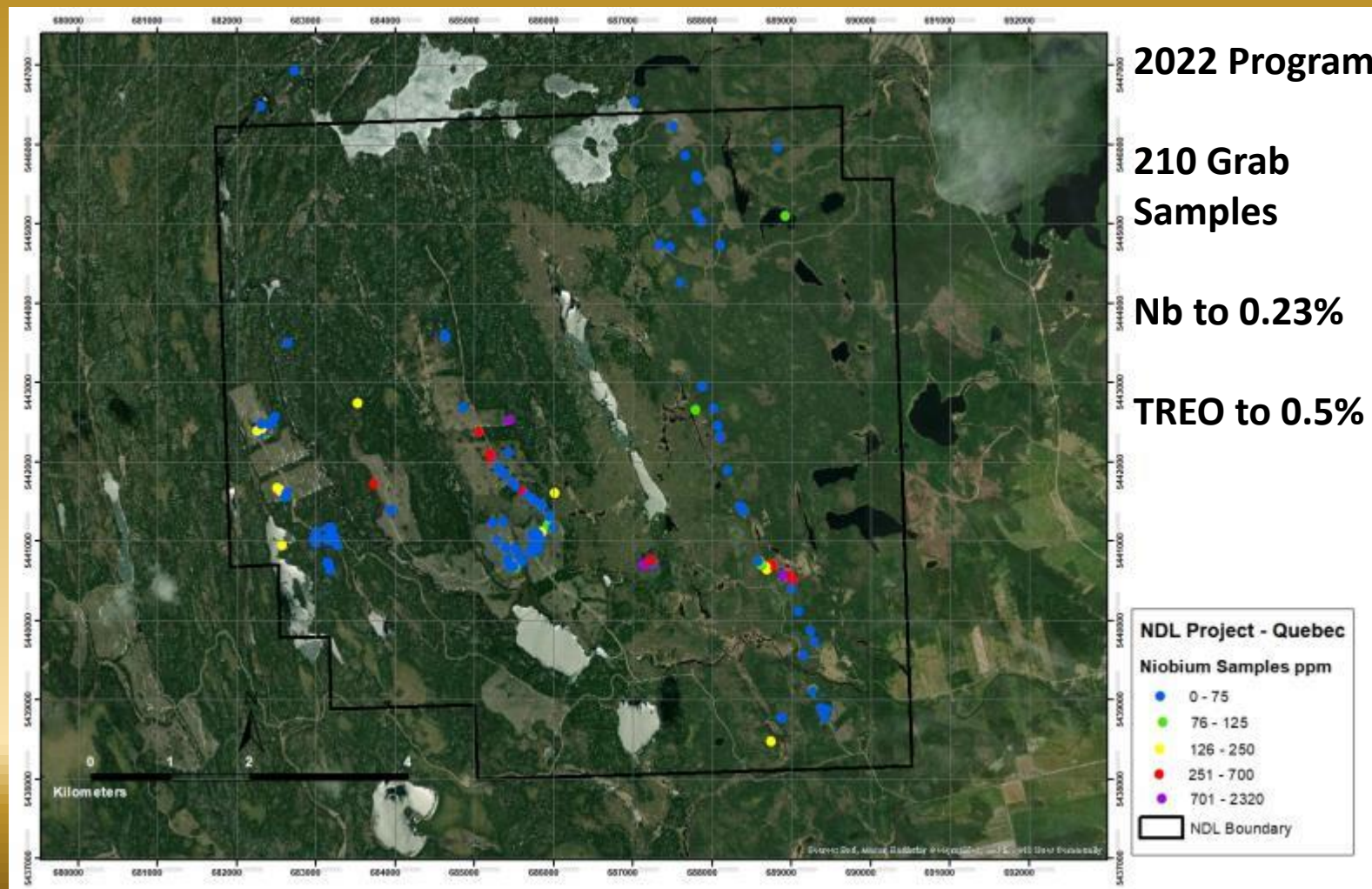
Niobec Magnetics





TSX-V: SXL

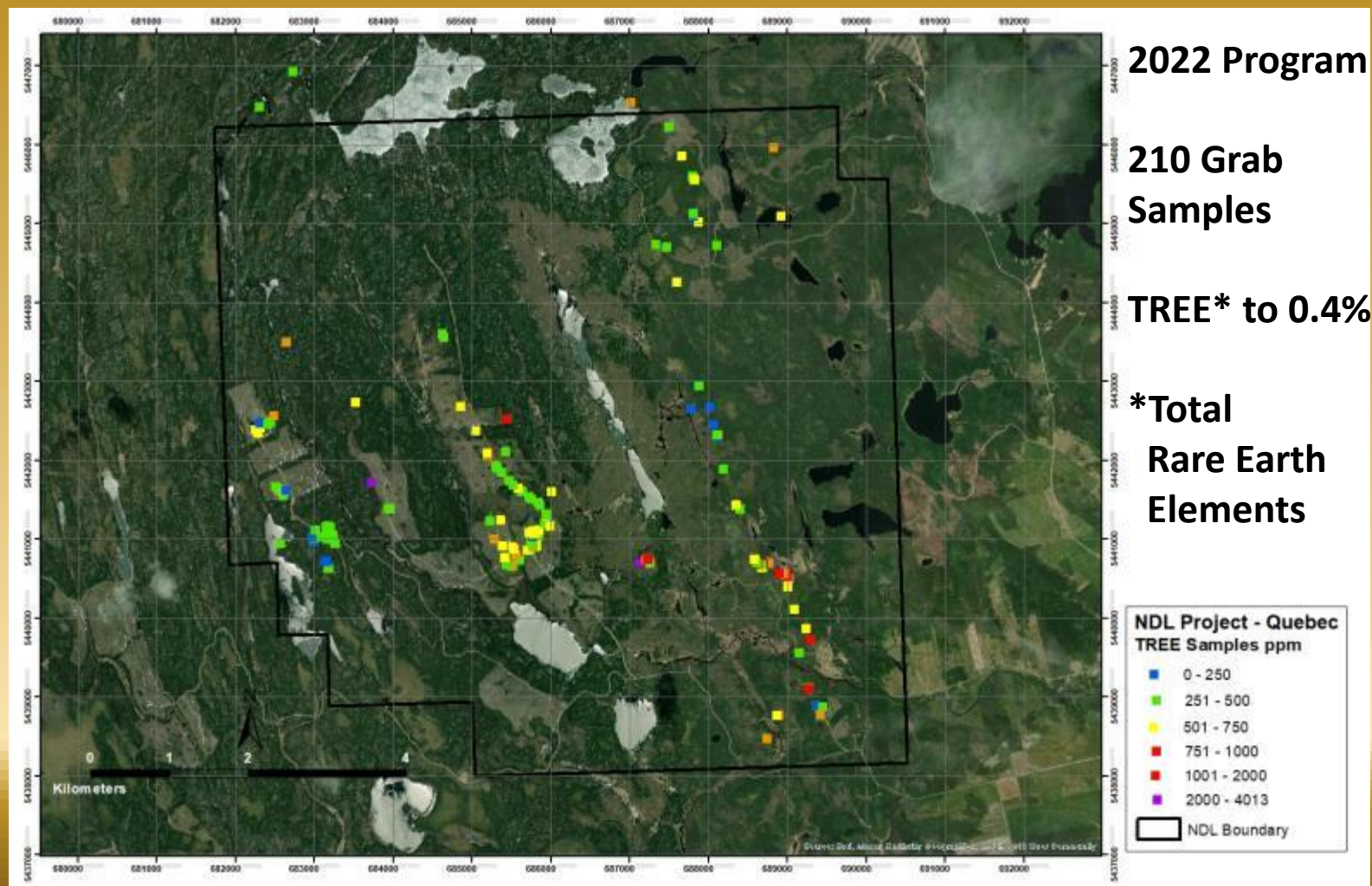
Notre Dame Rock Samples - Niobium





TSX-V: SXL

Notre Dame Rock Samples - TREE





TSX-V: SXL

Notre Dame Carbonatite

Oxide vein with niobium
and REE minerals in
carbonatite





TSX-V: SXL

Ear Falls Lithium Project - Ontario

**347 mineral claims
acquired by SLAM**

**4700 hectares adjacent to
lithium claims held by
Beyond Lithium (BY)**

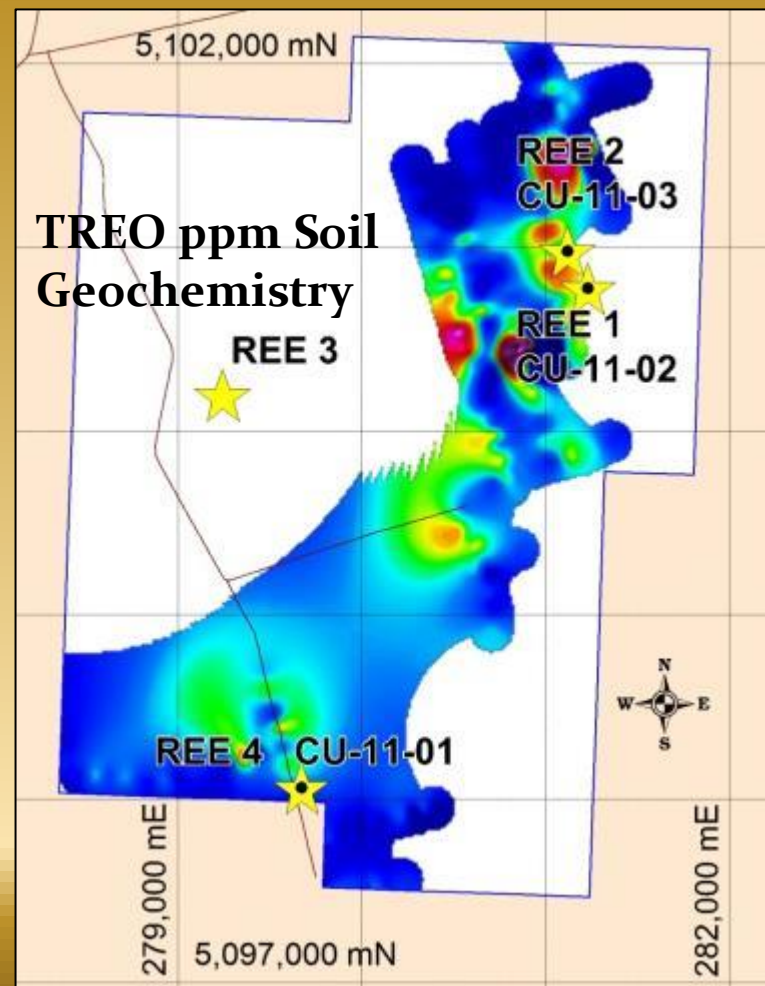
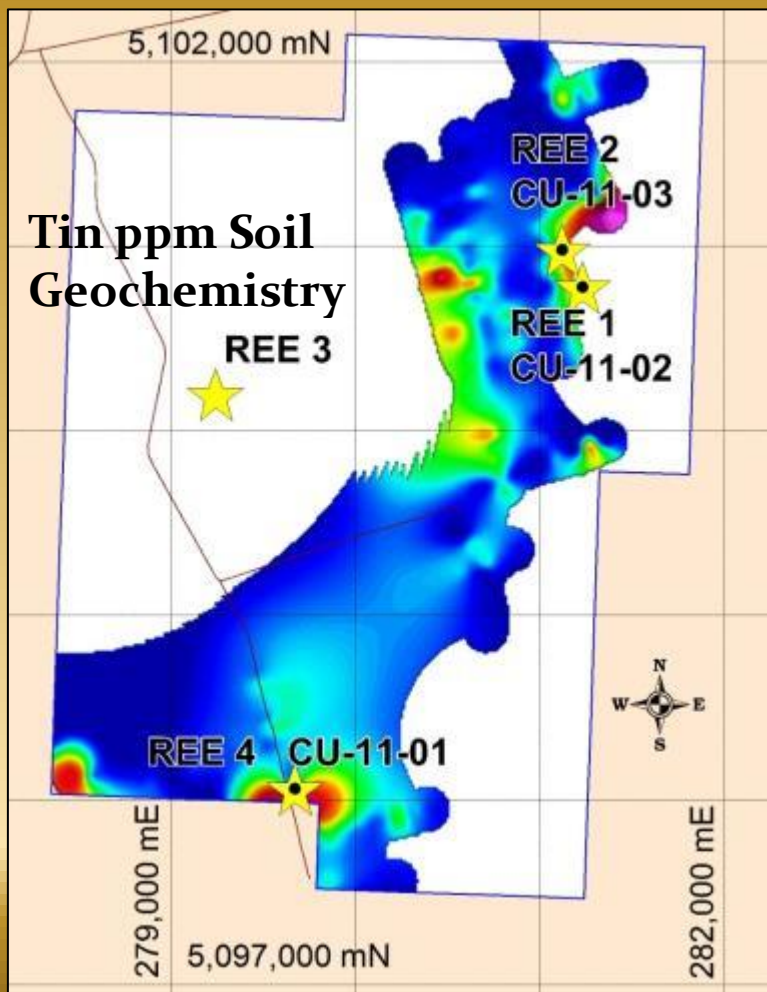
**BY pegmatite discovery
grab samples to 4.54% Li₂O
& launch of a stripping
program October 23, 2023**





TSX-V: SXL

CUMBERLAND CRITICAL ELEMENTS NB

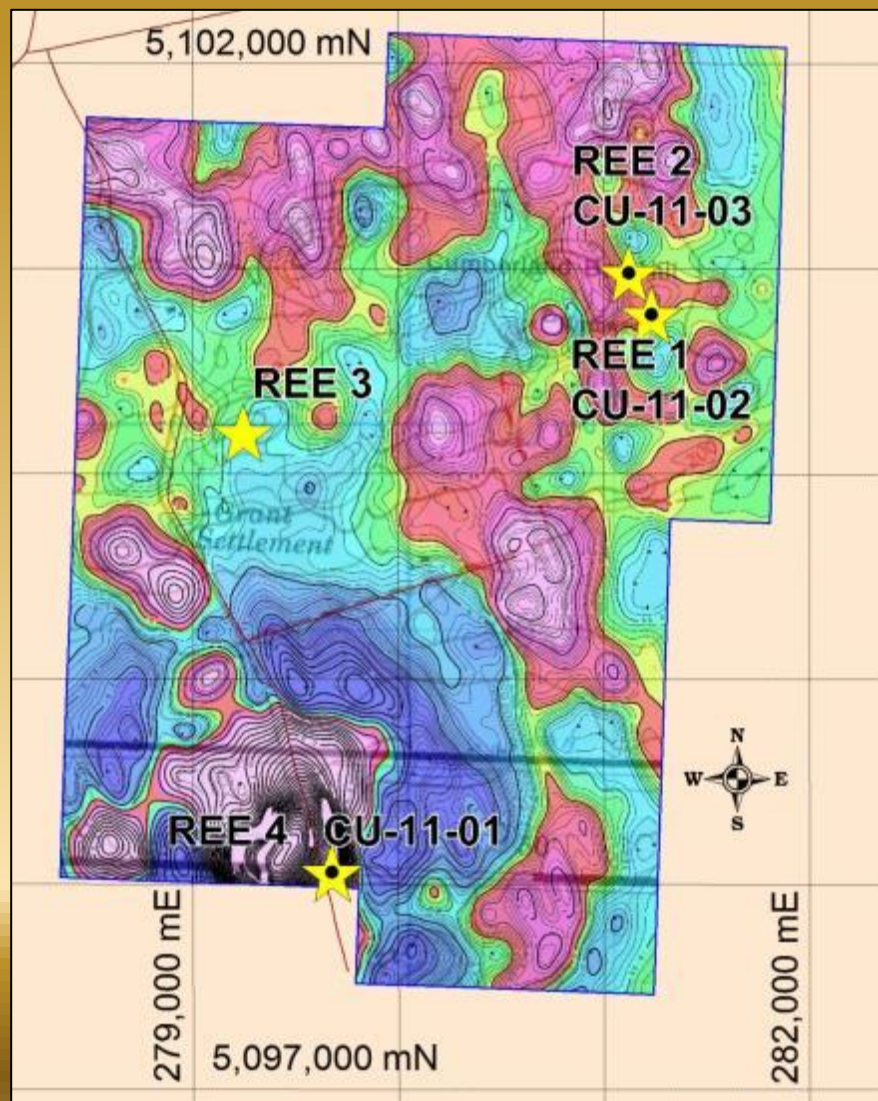




TSX-V: SXL

CUMBERLAND AEROMAGNETICS

Gradient aeromagnetics
Strong association
between REE occurrences
and magnetic features





TSX-V: SXL

Project Status 2023-2024

Project	Work Planned	Target
Menneval	Diamond Drilling , Geochemistry	Gold
Jake Lee	Diamond Drilling , Geochemistry	Gold
Peninsula	Prospecting, Trenching, Diamond Drilling	Lithium
Notre Dame	Prospecting, Trenching, Diamond Drilling	Niobium, REE's
Ear Falls	Prospecting, Trenching, Diamond Drilling	Lithium
Mine Road	Diamond drilling, Down-hole surveys	Base Metals, Silver

Contact Mike Taylor
506-623-8960
mike@slamexploration.com



TSX-V: SXL

Property Sales >> NSR Royalties

NSR Property	Company	Commodity	Canadian Province
Reserve Creek*	S2 Minerals Inc.	Gold	Ontario
Opikeigen*	S2 Minerals Inc.	Gold	Ontario
Ferguson*	Puma Exploration Inc.	Gold	New Brunswick
Ramsay*	Stratabound Minerals Corp.	Gold	New Brunswick
Goodwin*	QNB Metals Inc.	Co-Ni-Cu	New Brunswick
Wedge *	Nine Mile Metals Inc.	Base metals	New Brunswick
Nash Creek**	Callinex Mines Inc.	Base metals	New Brunswick
Superjack**	Callinex Mines Inc.	Base metals	New Brunswick

*SLAM expects to receive additional cash and share payments on these projects.

** Nash Creek and Superjack agreement is fully vested. SLAM retains NSR.