

A WORLD OF COLOR

Selector guide for print and cut materials
and GerberColor™ thermal transfer foils



THE BEST MATERIALS IN THE INDUSTRY



Gerber Cast Vinyl, Intermediate & Specialty Films

Gerber offers a wide range of outdoor-durable self-adhesive, opaque and translucent, magnetic, holographic, reflective, and semi-rigid materials. Gerber Series 220 and 225 Cast Vinyl manufactured by 3M continue to exceed the industry standard for consistency, weed-ability, and durability. These premium films are available in over 90 colors and in 15, 24, 30 and 48 inch widths.

GerberColor™ Thermal Transfer Foils

GerberColor Foils are time-tested and proven thermal transfer materials, custom formulated as part of Gerber's unique Matched Technology System. This performance-driven series delivers:

- The durability to withstand harsh exterior and industrial environments, including abrasion and UV exposure
- The versatility to match popular paint, vinyl, and ink colors
- The flexibility to print from fine lines to fleet markings
- The consistency to produce eye-catching results



THE GERBER MATCHED TECHNOLOGY SYSTEM

Gerber EDGE READY™ materials and GerberColor Foils are specially formulated for the GERBER EDGE® Series of thermal transfer printers. Produce amazing graphics in three easy steps:

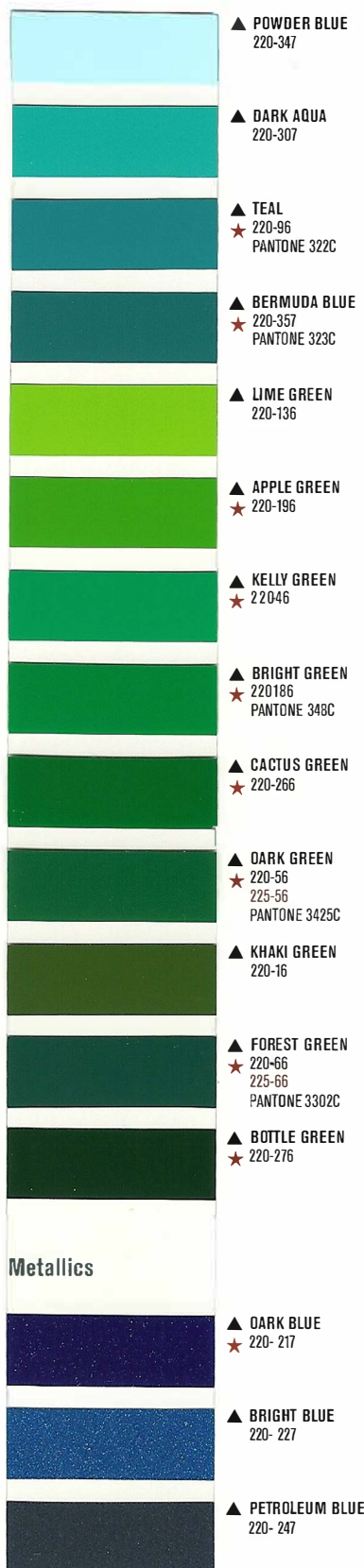
- 1 **DESIGN** the graphics in Gerber OMEGA™ design and output software
- 2 **PRINT** using the GERBER EDGE FX™ printer on a broad range of Gerber materials
- 3 **CUT** the graphics on a Gerber 15™ plotter, capable of delivering custom contour kiss cuts and back cuts for instant finishing

GERBER CAST VINYL MATERIALS

HIGH PERFORMANCE 220/225 MANUFACTURED BY 3M

	▲ MATTE WHITE ★ 220-20 225-20		▲ RUSSET BROWN ★ 220-29 PANTONE 175C		▲ MAGENTA 220-103 PANTONE 205C
	▲ WHITE ★ 220-10 225-10		▲ SANDSTONE 220-89		▲ PROCESS MAGENTA 220-273 PANTONE 214C
	▲ ANTIQUE WHITE ★ 220-90		▲ TAN 220-39		▲ WARM RED ★ 220-253 PANTONE 485C
	▲ OYSTER ★ 220-100		▲ BEIGE ★ 220-49 225-49		▲ PERFECT MATCH RED ★ 220-263 PANTONE 186C
	▲ PEARL GREY ★ 220-11 PANTONE COOL GRAY 2C		▲ FAWN 220-90		▲ ATOMIC RED ★ 220-293
	▲ LIGHT GREY 220-121		▲ LIGHT LEMON YELLOW 220-65		▲ TOMATO RED ★ 220-13 225-13 PANTONE 1795C
	▲ STONE GREY 220-81		▲ PRIMROSE YELLOW ★ 220-135		▲ IMPERIAL RED 220-93
	▲ MEDIUM GREY ★ 220-31 225-31 PANTONE COOL GRAY 7		▲ BRIGHT YELLOW ★ 220-15 225-15 PANTONE 109C		▲ GERANIUM ★ 220-63 225-63
	▲ MID GREY 220-61 PANTONE COOL GRAY 8C		▲ SUNFLOWER ★ 220-35 225-35 PANTONE 1235C		▲ CARDINAL RED ★ 220-53 225-53
	▲ TRAFFIC GREY ★ 220-151		▲ CHROME YELLOW 220-145		▲ CRANBERRY 220-283
	▲ DYE GREY 220-91		▲ IMITATION GOLD ★ 220-105 PANTONE 7510C		▲ BURGUNDY ★ 220-58 225-58
	▲ DARK GREY ★ 220-41 PANTONE COOL GRAY 11C		▲ APRICOT 220-54		▲ DARK BURGUNDY ★ 220-68
	▲ NIMBUS GREY 220-101		▲ LIGHT ORANGE 220-54		▲ DARK VIOLET 220-98
	▲ MATTE BLACK ★ 220-22 225-22 PANTONE BLACK C		▲ BRIGHT ORANGE ★ 220-14 PANTONE ORANGE 021C		▲ PLUM 220-78 PANTONE 525C
	▲ BLACK ★ 220-12 225-12 PANTONE PROCESS BLACK C		▲ INTENSE ORANGE ★ 220-134		▲ ROYAL PURPLE ★ 220-38
	▲ DURANDIC ★ 220-69		▲ RED ORANGE 220-74		▲ PURPLE 220-48
	▲ DEEP MAHOG. BROWN ★ 220-19 225-19 PANTONE 4625C		▲ TERRA COTTA 220-24		▲ ROYAL BLUE ★ 220-87

Product	Cast Vinyl 220/225 Series	220 Metallic	220/225 Clear	ImageCast	180mC Controltac
Thickness	2 mil	2 mil	2 mil	2.5 mil	2 mil
Exterior Life	8 years	5 years	5 years	5 years	7 years



Liner

220 – 78 Pound Kraft Paper

225 – Transparent Synthetic

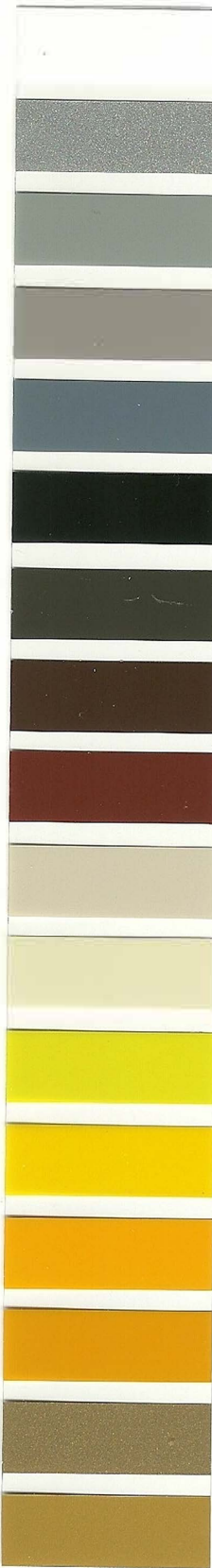
Available Widths

● 15" Punched

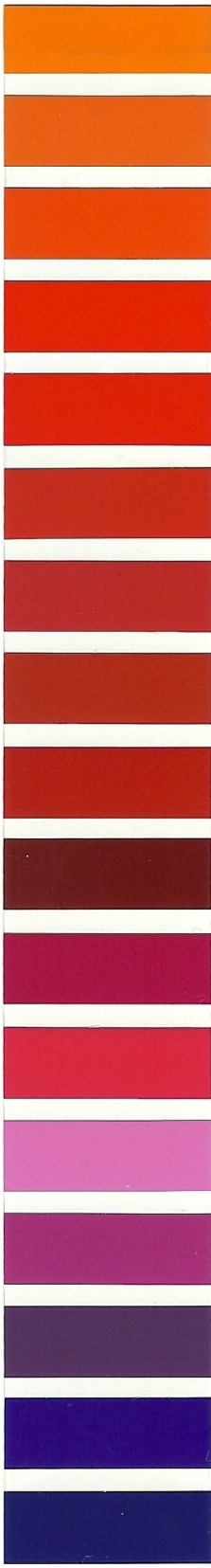
▲ 15"/30" Punched

★ 24"/48" Unpunched

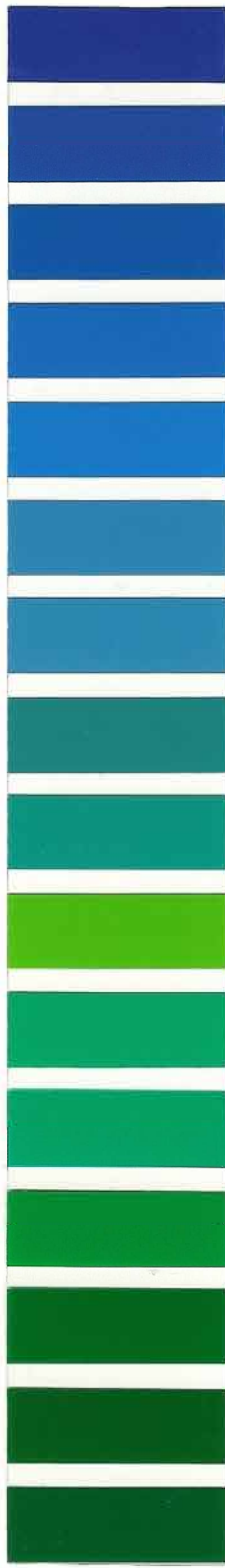
TRANSLUCENT 230 MANUFACTURED BY 3M



- ▲ WHITE
230-20
- ▲ SILVER
230-121
PANTONE 877C
- ▲ SILVER GREY
230-51
- ▲ SHADOW GREY
230-71
PANTONE WARM GREY 7
- ▲ SLATE GREY
230-61
- ▲ BLACK
230-22
(OPAQUE)
PANTONE BLACK C
- ▲ DURANODIC
230-69
(OPAQUE)
PANTONE BLACK 7C
- ▲ DARK BROWN
230-59
- ▲ RUST BROWN
230-63
PANTONE 7610C
- ▲ LIGHT BEIGE
230-149
- ▲ IVORY
230-005
PANTONE 7500C
- ▲ LEMON YELLOW
230-115
- ▲ YELLOW
230-015
PANTONE 116C
- ▲ MANGO
230-125
PANTONE 1235C
- ▲ SUNFLOWER
230-25
PANTONE 130C
- ▲ METALLIC GOLD
230-131
PANTONE 872C
- ▲ GOLD NUGGET
230-141



- ▲ KUMQUAT
230-74
PANTONE 151C
- ▲ TANGERINE
230-84
PANTONE 1575C
- ▲ ORANGE
230-44
- ▲ POPPY RED
230-143
PANTONE 485C
- ▲ LT. TOMATO RED
230-43
- ▲ RED
230-33
PANTONE 1797C
- ▲ SCARLET RED
230-83
- ▲ DARK RED
230-73
PANTONE 7621C
- ▲ CARDINAL
230-53
PANTONE 187C
- ▲ BURGUNDY
230-49
- ▲ RASPBERRY
230-133
PANTONE 220C
- ▲ VIVID ROSE
230-78
PANTONE 206C
- ▲ PINK LAVENDER
230-108
PANTONE 224C
- ▲ MULBERRY
230-118
PANTONE 241C
- ▲ PLUM PURPLE
230-128
PANTONE 525C
- ▲ ROYAL BLUE
230-87
PANTONE 2745C
- ▲ DARK BLUE
230-36
PANTONE 281C



- ▲ COBALT BLUE
230-157
PANTONE 287C
- ▲ DELFT BLUE
230-97
- ▲ BLUE
230-167
PANTONE 2945C
- ▲ INTENSE BLUE
230-127
PANTONE 300C
- ▲ PROCESS BLUE
230-337
- ▲ DEEP SKY BLUE
230-147
PANTONE 7690C
- ▲ OLYMPIC BLUE
230-57
- ▲ TEAL
230-246
PANTONE 321C
- ▲ TURQUOISE
230-236
PANTONE 3282C
- ▲ APPLE GREEN
230-106
PANTONE 368C
- ▲ KELLY GREEN
230-146
PANTONE 340C
- ▲ BRIGHT JADE GREEN
230-116
- ▲ VIVID GREEN
230-156
- ▲ GREEN
230-26
PANTONE 7727C
- ▲ HOLLY GREEN
230-76
PANTONE 7734C
- ▲ EMERALD GREEN
230-126
PANTONE 3425C

Product	230 Translucent
Thickness	2 mil
Exterior Life	6 years

Liner
230 - Transparent Synthetic

Available Widths
▲ 15"/30" Punched

GERBER SPECIALTY MATERIALS

280/280i PLUS REFLECTIVE



HOLOGRAPHIX™



LUMINOUS



Product	Reflective	HoloGraphix	210 Fluorescent	210 Crystals
Thickness	7.5 mil	3.7 mil	2 mil	3 mil
Exterior Life	7 years	Interior only	1 year	3 years

Product	Metallized Polyester	Gerber Luminous	Gerber Glow	Label Stock	Gerber Guard	UVGuard	UVGuard 9	StrikeGuard
Thickness	2 mil	9 mil	2.5 mil	1 and 2 mil	3 mil	1 mil	2 mil	8 mil
Exterior Life	2 years	1 year	Interior only	2 years	5 years	5 years	9 years	2 years

SPECIALTY APPLICATIONS

- **PERMAGRIP™ VINYL**
Durable, permanent film
- **GERBERVISION™**
Window film
- **STATIC CLING CLEAR**
- **STATIC CLING WHITE**
- **INSTACHANGE™**
White, removable vinyl
- **GERBERMAG™ II**
Flexible
19 mil
For promotional magnets
- **AUTOMAG™ II**
Vehicle-strength
24 mil
Magnetic material

Sample available upon request

Sample available upon request

OTHER MATERIALS

- **EDGE POSITIVE™**
Crystal clear
7 mil
For screen printing
- ▲ **DRAWING AND POUNCING PAPER**
- ▲ **SANDBLAST 1532**
Rubber masking stencil
for sandblasting glass,
stone & wood
- **SANDBLAST 519VP**
Double-finer
rubber masking stencil
- APPLICATION TAPE**
Various widths
- LAMINATING ADHESIVE**
(467MP, 468MP)
12" width

Sample available upon request

Sample available upon request

Sample available upon request

Sample available upon request

Sample available upon request

SEMI-RIGID

Custom formulated for use with GERBER EDGE® Series printers

- **LEXEDGE™ II**
10 mil Lexan™,
custom-formulated
print surface.
Also available in 5 mil
- **LEXEDGE™ FR65**
10 mil flexible Lexan™ based
polycarbonate,
meets stringent UL94
V-0 flame-retardant
specifications
- **LEXEDGE™ CLEAR**
Clear, polished
10 mil Lexan™
- **LEXEDGE™ OUTDOOR**
Outdoor durable, matte,
10 mil Lexan™
- **PVC-10**
White, 10 mil, PVC material,
custom formulated

INTERMEDIATES

QUANTUM™

- ▲ WHITE
- ▲ MATTE WHITE
- ▲ BLACK
- ▲ YELLOW
- ▲ RED

IMAGECAL™

- **IMAGECAL P**
- **IMAGECAL R WHITE**
- **IMAGECAL R CLEAR**

Available Widths

- 15" Punched
- ▲ 15"/30" Punched
- ◆ 20"/45" Unpunched
- ★ 24"/48" Unpunched

Product	PermaGrip	GerberVision	Static Cling	InstaChange	Quantum	ImageCal P	ImageCal R White	ImageCal R Clear
Thickness	2 mil	4 mil	7 mil	4.6 mil	3.6 mil	4 mil	4 mil	3.5mil
Exterior Life	7 years	1 year	Interior only	2 years	5 years	2 years	1 years	6 months

GERBERCOLOR™ FOILS

GERBERCOLOR SPOT (GCS)

	ARCTIC WHITE GCS-710 ■ 45m ■ 45m		PINK GCS-643 ■ 45m ■ 15m		LIGHT NAVY GCS-697 ■ 45m ■ 15/45m
	WHITE GCS-10 ■ 45/75m ■ 45m		INTENSE RED GCS-663 ■ 45m ■ 45/91m		NAVY GCS-627 ■ 45m ■ 45/91m
	BLACK GCS-12 ■ 45/75m ■ 45/91m		ATOMIC RED GCS-293 ■ 45m ■ 15/45m		COBALT BLUE GCS-37 ■ 45m ■ 45/91m
	LIGHT GREY GCS-681 ■ 45m ■ 45m		FIREBALL RED GCS-493 ■ 45m ■ 45m		ROYAL REFLEX GCS-687 ■ 45m ■ 45m
	GREY GCS-31 ■ 45m ■ 45m		TOMATO RED GCS-13 ■ 45m ■ 45/91m		AQUA GCS-176 ■ 45m ■ 15m
	TRAFFIC GREY GCS-151 ■ 45m ■ 15m		RUBY RED GCS-53 ■ 45m ■ 45/91m		TEAL GCS-96 ■ 45m ■ 45m
	DARK GREY GCS-641 ■ 45m ■ 45m		BRICK RED GCS-603 ■ 45m ■ 15m		LIME GREEN GCS-616 ■ 45m ■ 15/45m
	BROWN GCS-19 ■ 45m ■ 45m		DARK CARDINAL GCS-353 ■ 45m ■ 45m		ELECTRIC GREEN GCS-406 ■ 45m ■ 45m
	TAN GCS-39 ■ 45m ■ 15m		BURGUNDY GCS-58 ■ 45m ■ 45m		APPLE GREEN GCS-196 ■ 45m ■ 45m
	BEIGE GCS-49 ■ 45m ■ 45m		RASPBERRY GCS-133 ■ 45m ■ 15m		GREEN GCS-186 ■ 45m ■ 45/91m
	LEMON YELLOW GCS-155 ■ 45m ■ 45m		LIGHT PURPLE GCS-668 ■ 45m ■ 45m		KELLY GREEN GCS-46 ■ 45m ■ 45m
	YELLOW GCS-15 ■ 45m ■ 45/91m		VIOLET PURPLE GCS-628 ■ 45m ■ 15/45m		DARK GREEN GCS-56 ■ 45m ■ 45m
	SUNFLOWER YELLOW GCS-625 ■ 45m ■ 45m		PURPLE GCS-38 ■ 45m ■ 45m		FOREST GREEN GCS-66 ■ 45m ■ 45m
	IMITATION GOLD GCS-105 ■ 45m ■ 15/45m		PEACOCK BLUE GCS-77 ■ 45m ■ 45m		SILVER GCS-620 ■ 45m ■ 45m
	KUMQUAT GCS-74 ■ 45m ■ 45m		OLYMPIC BLUE GCS-57 ■ 45m ■ 45/91m		GOLD GCS-631 ■ 45m ■ 45m
	ORANGE GCS-14 ■ 45m ■ 45/91m		INTENSE BLUE GCS-47 ■ 45m ■ 45/91m		COPPER GCS-629 ■ 45m ■ 15m
	TERRA COTTA GCS-24 ■ 45m ■ 15m		VIVID BLUE GCS-17 ■ 45m ■ 15m		CHAMPAGNE GOLD GCS-601 ■ 45m ■ 15m

GerberColor™ Foils and EDGE READY™ materials are specially formulated for the GERBER EDGE® series of thermal transfer printers. Print outdoor-durable spot, metallic, and process color to self-adhesive, magnet, holographic, reflective materials, and more.

GERBERCOLOR MEDAL (GCM)

	SILVER MEDAL II GCM-721 ■ 25m ■ 25m
	GOLD MEDAL GCM-731 ■ 25m ■ 15m
	RED MEDAL* GCM-783 ■ 25m
	BLUE MEDAL* GCM-747 ■ 25m

GERBERCOLOR SPECIAL EFFECTS (GCX)

	FLOOD COAT WHITE GCX-10 ■ 45m ■ 45m
	JET BLACK GCX-12 ■ 45m ■ 45m
	FLUORESCENT RED ORANGE GCX-414 ■ 25m ■ 45m
	SPECTRATINT™ GCX-30 ■ 45m ■ 45m
	SPECTRASHADE™ GCX-111 ■ 45m ■ 45m
	METAL FLAKE GCX-715 ■ 45m ■ 45m

GERBERCOLOR FINISHING (GCF)

	ABRASION GUARD SPF GCF-214 ■ 75m ■ 91m
	MATTE CLEAR GCF-334 ■ 25m ■ 15m

GERBERCOLOR TRANSPARENT (GCT)

	YELLOW GCT-625 ■ 45m ■ 45m
	ORANGE GCT-614 ■ 45m ■ 45m
	RED GCT-643 ■ 45m ■ 45m
	TOMATO RED GCT-13 ■ 45m ■ 45m
	BURGUNDY GCT-49 ■ 45m ■ 45m
	PLUM PURPLE GCT-128 ■ 45m ■ 45m
	SAPPHIRE BLUE GCT-37 ■ 45m ■ 45m
	BLUE GCT-617 ■ 45m ■ 45m
	GREEN GCT-116 ■ 45m ■ 45m
	BROWN GCT-629 ■ 45m ■ 45m
	GOLD GCT-105 ■ 45m ■ 45m
	WHITE GCT-30 ■ 45m ■ 45m
	GREY GCT-111 ■ 45m ■ 45m

GERBERCOLOR PROCESS PRO™ (GSP)

	PROCESS YELLOW GCP-805 ■ 45m ■ 45/91m
	PROCESS MAGENTA GCP-873 ■ 45m ■ 45/91m
	PROCESS CYAN GCP-807 ■ 45m ■ 45/91m
	PROCESS BLACK GCP-812 ■ 45m ■ 45/91m

GERBER COLORSET™ (CSP/CSS)

	PROCESS YELLOW* CSP-605 ■ 50m
	PROCESS MAGENTA* CSP-273 ■ 50m
	PROCESS CYAN* CSP-607 ■ 50m
	PROCESS BLACK* CSP-12 ■ 50m
	COBALT BLUE* CSS-37 ■ 45m
	WARM RED* CSS-253 ■ 45m
	BLACK* CSS-12 ■ 45m

*Available for EDGE and EDGE 2 only

■ EDGE/EDGE 2 - Length in Meters

■ EDGE FX - Length in Meters

GERBERCOLOR SPECTRATONE™

Base Color Spectratone Color Overprint Color



Vivid reds! Cool blues! Soft pastels and sparkling metallics! Create more than 3,000 spot colors with GerberColor Spot, Process, and Transparent Series Foils. All SPECTRATONE colors are 100% solid fills: NO gradient textures. NO halftone dots.

GERBER MATERIAL & FOIL APPLICATIONS



CAST VINYL



TRANSLUCENT



REFLECTIVE



REMOVABLE



HOLOGRAPHIX



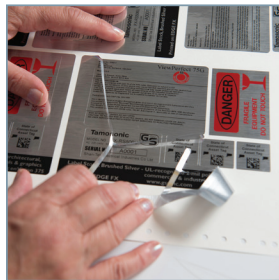
FLUORESCENT



WINDOW



METAL FLAKE FOIL



LABEL STOCK



**SEMI-RIGID
FAA COMPLIANT**

Your Authorized Gerber Distributor:

Gerber Quality & Service

- Offering the finest products in the industry – including custom formulated cast vinyl manufactured by 3M
- Headquartered in the USA
- USA customer service at 1-800-222-7446
- Same day shipping
- Nationwide network of well-stocked distributors
- Expert application support
- Trusted Gerber quality for over 30 years!

Terms and Conditions of Sale

All statements, technical information, and recommendations contained herein are based on tests we believe to be reliable, but the accuracy or completeness thereof is not guaranteed, and the following is made in lieu of all warranties, express or implied. Seller's and manufacturer's only obligation shall be to replace such quantity of the product proved to be defective. Neither seller nor manufacturer shall be liable for any injury, loss or damage, direct or consequential, arising out of the use of or the inability to use the product. Before using, user shall determine the suitability of the product for its intended use, and user assumes all risk and liability whatsoever in connection therewith. Statements or recommendations

not contained herein shall have no force or effect unless, in agreement, signed by officers of seller and manufacturer. When processed in accordance with the procedures in current 3M Product and Instruction Bulletins, performance as indicated may be expected. Performance statements are based upon representative experience obtained from testing throughout the United States; however, actual performance will be determined by substrate selection and preparation, maintenance of the marking, and exposure conditions. Not intended for use where markings may be subject to petrochemical spillage. **Detailed product bulletins are available at www.gerberotechnology.com/signage.**



Gerber Technology
24 Industrial Park Road West
Tolland, CT 06084 USA

860-644-1551 / 800-222-7446
www.gerberotechnology.com/signage

GERBER MATERIAL DESCRIPTIONS

Gerber 220/225 Cast Vinyl manufactured by 3M

High performance film is formulated to adhere to uneven surfaces and perform for up to 8 years. Clear, pressure-sensitive adhesive allows for attractive two-way markings. Easy to cut, weed and apply. 220 has 78 lb paper liner; 225 has transparent synthetic liner.

3M™ Controllac™ Film 180mC sold by Gerber

High performance, versatile cast vinyl with a repositionable, pressure-activated adhesive that allows air to escape through micro-channels without leaving channel marks on the film surface. Faster and easier to apply than conventional films.

Gerber ImageCast™ manufactured by 3M

Durable, clear cast vinyl, custom formulated for use with GERBER EDGE® printers.

Gerber Translucent 230 Cast Vinyl manufactured by 3M

A durable and dimensionally stable translucent film with a clear, pressure-sensitive adhesive. Features uniform color with a matte finish to eliminate glare.

Gerber 280 & 280i Plus Reflective manufactured by 3M

Reflective films designed for high visibility, day and night. Optimized for EDGE printing. Removable with heat.

Gerber Label Stock

UL recognized polyester-based films that resist tearing, abrasion, and heat. Chemically-resistant to mild acids, motor oil, and cleaning agents. Available in clear, white, brushed silver, brushed gold, matte silver, and shiny silver.

Gerber PermaGrip™ Label Stock

UL recognized polyester material has an aggressive adhesive. Specially designed for low surface energy (LSE) surfaces. Withstands a range of -40°F to 302°F.

Gerber Security Label Stock

Designed for identification markings needing tamper-evident protection. The word VOID appears if the label is removed. Available in white and chrome.

Gerber Static Cling

Vinyl film designed to adhere to glass without adhesive. Available in white or clear. Can be printed or decorated with vinyl graphics.

Gerber InstaChange™ manufactured by 3M

White vinyl film that is removable for up to two years with no adhesive residue. Grey pigmented adhesive allows maximum opacity.

Magnetic

Gerber AutoMag™ II is a flexible, 24 mil material with 18 magnetic poles per inch for vehicle-strength removable graphics. **GerberMag™ II** is a flexible, 19 mil material with 12 magnetic poles per inch. Perfect for ad/promotional applications.

Gerber HoloGraphix™

Holographic material, available in four patterns that include mirror and prismatic finishes. Each pattern creates a spectrum of color for dynamic visual effects.

Gerber 210 Fluorescent manufactured by 3M

Vibrant fluorescent films provide high visibility under normal or low light.

Gerber 210 Crystal manufactured by 3M

210 Dusted and **Frosted Crystal** films resemble acid-etched glass and sand-blasted glass. They have a clear adhesive and are perfect for windows, glass, mirror and clear plastic applications. For cut graphic applications.

Gerber Metallized Polyester

These polyester-based films have a mirror look on both sides for two-sided interior and limited exterior use. Available in Brushed Silver/Aluminum and Shiny Silver.

Glow-in-the-Dark

Gerber Luminous Film manufactured by 3M glows for up to 6 hr and takes only 3 min to recharge. Meets maritime, fire protection, and railroad standards and requirements. **GerberGlow™**, a novelty grade glow-in-the-dark film, has a 1 hr charge time that provides a bright glow for 30 min.

Gerber PermaGrip™ manufactured by 3M

A durable, permanent cast vinyl with an aggressive, pigmented adhesive that provides superior hiding power on colored surfaces. Best for flat, moderately-compound curved and rough surfaces, and some low surface energy materials.

GerberVision™ manufactured by 3M

Perforated window film suitable for all types of clear substrate displays. The clear adhesive system allows for easy removal and replacement.

Gerber LexEdge™ Series Semi-Rigid Films

Lexan™-based films with a smooth printable surface and a non-printable display surface. Ideal for reverse printed, subsurface graphics. **LexEdge II** has a clear, velvet finish in 5 or 10 mil. **LexEdge Clear** has a polished finish, **LexEdge Outdoor** offers an outdoor-durable, clear matte finish, and **LexEdge FR65** with velvnet finish, meets stringent UL94 V-0 flame-retardant specifications and is compliant with FAA regulations.

Gerber PVC-10 Shelf & Tag

Semi-rigid PVC material, ideal for menu boards, POP displays, ID tags, and door hangers.

Gerber EDGE Positive™

Clear, top-coated polyester film, formulated for GERBER EDGE printing to produce screen printing film positives.

GerberMask™ Series

GerberMask™ Ultra white vinyl stencil mask with low-tack removable adhesive features a moisture resistant liner that resists curling and expansion. **GerberMask™ Ultra II** features an aggressive, removable acrylic adhesive for hand and spray painting, light sandblasting, or acid etching. **GerberMask™ Yellow Ultra** is yellow vinyl with low-tack removable adhesive that offers high-contrast visibility and withstands short bake cycles up to 200°F.

Gerber Sandblast

Rubber masking stencil for sandblasting glass, stone, treated and untreated wood. **Sandblast 1532** single-liner stencil has a low-friction coating. **Sandblast 519YP** double-liner stencil features a yellow translucent polyester inner liner for better visibility.

Gerber Quantum™

Calendered polymeric film that is perfect for interior and exterior graphics requiring up to 5-year durability. Semi-gloss and matte colors available. Solvent-based, acrylic adhesive.

Gerber ImageCal™ “P”

A clear, calendered vinyl film with a permanent adhesive system designed for creating decals and labels with GERBER EDGE printers.

Gerber ImageCal™ “R”

ImageCal “R” Clear is a durable calendered vinyl. Removable for up to 6 months after application. **ImageCal “R” White** is a removable calendered vinyl that can be reused up to 5 times within one year.

Overlaminates

Gerber Guard manufactured by 3M is a glossy 3 mil overlaminate designed to provide protection from petrochemicals and abrasion resistance from severe handling conditions. **Gerber UVGuard™** is a 1 mil clear TEDLAR overlaminate that protects the life of graphics from weathering for up to 5 years. **Gerber UVGuard™ 9 manufactured by 3M** is a 2 mil glossy polyvinyl fluoride laminating film designed to further expand the resistance to weathering for printed or cut graphics on Gerber films. Offers the highest protection from UV fade. **Gerber StrikeGuard™** provides an extra-thick, 8 mil flexible, clear overlaminate designed to provide EDGE®- printed graphics with extreme protection from forceful impact.

SPEC GUIDE

	Product Name	Description	Thickness (mil)	Adhesive	Outdoor Life (yrs)	Format Width (Inches)
Cast Vinyl	Gerber 220/225	High performance; durable; easy to use	2	Permanent	8	15/24/30/48
	220 Metallics	Stunning effects in 13 colors	2	Permanent	5	15/24/30/48
	180mC Controltac	Repositionable; pigmented adhesive; micro air channels	2	Repositionable	7	15
	ImageCast	Clear cast vinyl	2.5	Permanent	5	15
Translucent	230 Translucent	Translucent with synthetic liner	2	Permanent	5	15/30
Reflective	280 Reflective	High visibility, day and night	7.5	Permanent	7	15/30
	280i Plus Reflective	Printable white reflective	7.5	Permanent	7	15
Label Stock	Label Stock	Polyester-based film	1 & 2	Permanent	2	15
	PermaGrip Label Stock	For low surface energy (LSE) surfaces	2	Aggressive	2	15
	Security Label Stock	VOID appears if label is removed	2	Security	2	15
Removable	Static Cling	Clear & White; adheres to glass	7	None	Interior	15
	InstaChange	Removable vinyl	4.6	Removable	2	15
	GerberMag II	Promotional magnets	19	Magnetic	5	15
	AutoMag II	Vehicle strength magnets	24	Magnetic	5	15
Specialty	HoloGraphix	Holographic film in 4 patterns	3.7	Permanent	Interior	15
	210 Fluorescent	5 vibrant colors	2	Permanent	1	15
	210 Crystals	Dusted & Frosted etched glass looks	3	Permanent	3	15/24/30/48
	Metallized Polyester	Polyester film with mirror look	2	Permanent	2	15
	GerberGlow	Promotional glow-in-the-dark	2.5	Permanent	Interior	15
	Gerber Luminous	Industrial performance glow-in-the-dark	9	Permanent	1	15
	PermaGrip Cast Vinyl	Aggressive, pigmented adhesive	2	Aggressive	7	15
	GerberVision	Perforated window film	4	Removable	1	15
Semi-Rigid	LexEdge II	Velvet finish Lexan polycarbonate	5 & 10	None	Interior	15
	LexEdge FR65	Flame-retardant Lexan polycarbonate	10	None	Interior	15
	LexEdge Clear	Clear polished Lexan polycarbonate	10	None	Interior	15
	LexEdge Outdoor	Clear Lexan film with extra durability	10	None	5	15
	PVC-10 Shelf & Tag	Semi-rigid PVC material	10	None	1	15
	EDGE Positive	Screen print film positive	7	None	Interior	15
Paint Mask	GerberMask Ultra	Stencil masking film	4	Low Tack	N/A	15/20/30/45
	GerberMask Ultra II	Light sandblasting; paint or acid etching	4	Aggressive	N/A	15/20/30/45
	GerberMask Yellow Ultra	High contrast stencil on white surfaces	4	Low Tack	N/A	15/30/48
Stencil	Sandblast 1532	Single-liner sandblast stencil	37	Rubber Based	N/A	15/30
	Sandblast 519YP	Double-liner sandblast stencil	47	Rubber Based	N/A	15
Intermediate	Quantum	Polymeric calendered film	3.6	Permanent	5	15/30
	ImageCal P	Clear calendered film	4	Permanent	2	15
	ImageCal R Clear	Clear; removable up to 6 months	3.5	Removable	0.5	15
	ImageCal R White	Removable & reusable 5 times in 1-year	4	Removable	1	15
Overlamine	Gerber Guard	Glossy overlamine	3	Permanent	5	15
	UVGuard	Improves life of graphics up to 5 years	1	Permanent	5	15
	UVGuard 9	Highest protection from UV fade	1	Permanent	9	15
	StrikeGuard	Protects from forceful impact	8	Permanent	2	13

APPLICATIONS

Exterior Signage	Labels & Decals	Vehicle Graphics	P.O.P Displays	Placards & Overlays	Window Graphics	Banner	OEM	Safety	Back Lit	Awnings	Product Name
●	●	●	●	●	●	●	●	●		●	Gerber 220/225
●	●	●	●		●	●	●			●	220 Metallics
●	●	●	●			●	●				180mC Controltac
●	●	●	●		●		●				ImageCast
									●	●	230 Translucent
●	●	●	●		●	●	●	●		●	280 Reflective
●	●	●	●		●	●	●	●		●	280i Plus Reflective
	●		●	●			●				Label Stock
	●						●				PermaGrip Label Stock
	●						●				Security Label Stock
		●	●		●						Static Cling
●	●	●	●		●						InstaChange
			●								GerberMag II
●		●	●								AutoMag II
	●		●								HoloGraphix
●	●	●	●		●	●		●			210 Fluorescent
					●						210 Crystals
	●		●								Metallized Polyester
	●										GerberGlow
	●			●			●	●			Gerber Luminous
●	●	●	●				●				PermaGrip Cast Vinyl
		●	●		●						GerberVision
	●			●			●		●		LexEdge II
	●			●			●		●		LexEdge FR65
	●			●			●		●		LexEdge Clear
●	●			●			●		●		LexEdge Outdoor
	●		●						●		PVC-10 Shelf & Tag
— Screen printing in conjunction with thermal transfer printing —											EDGE Positive
— Masking & Stencil applications—											GerberMask Ultra
											GerberMask Ultra II
											GerberMask Yellow Ultra
— Masking & Stencil applications —											Sandblast 1532
											Sandblast 519YP
●	●	●	●		●	●	●				Quantum
●	●	●	●		●				●		ImageCal P
●	●	●	●		●				●		ImageCal R Clear
●	●	●	●		●						ImageCal R White
— Overlaminates —											Gerber Guard
											UVGuard
											UVGuard 9
											StrikeGuard

GERBERCOLOR™ FOILS

GerberColor Spot Series (GCS)

GCS foils offer a wide range of smooth, consistent pigments that match popular vinyl films, inks, and paints. Ideal for interior or exterior applications, they can be used in conjunction with process and transparent foils, or overprinted to create custom colors, patterns, gradients, and shade effects. This cost-effective alternative for 1, 2, or 3-color jobs offers color matches not achieved with 4-color process.

GerberColor Process Pro™ Series (GCP)

This series has been designed to produce durable, process color GERBER EDGE prints with expanded print definition.

GerberColor Transparent Series (GCT)

These outdoor-durable, transparent foils allow the base material's characteristics to show through and be enhanced – reflectives reflect, metallics sparkle, chrome-finishes shine brightly, and transluents colorfully light up. GCT foils can also be used on opaque films for traditional spot color applications.

GerberColor Medal Series (GCM)

Add an elegant, polished, metallized finish to signs, labels, and decals. Not recommended for outdoor use or with Gerber Static Cling, LexEdge™ II, or Gerber reflective films. First-surface application only (foil is not reversible). Gerber does not recommend printing halftones with this product.

GerberColor Special Effects Series (GCX)

This line of exciting special effects colors adds impact to signs, labels, and decals. Fluorescents are recommended for indoor use only.

Gerber ColorSet™ Series (CSP/CSS)

ColorSet foils are designed for promotional, short-term interior or exterior signs, banner graphics, or novelty items lasting up to three years.

GerberColor Finishing Series (GCF)

Abrasion Guard™ SPF is a clear, semi-gloss, overprint foil that adds protection against moderate handling conditions and UV protection.

Matte Clear* provides abrasion resistance and reduces glare to enhance the legibility of printed graphics.

*For increased protection from the effects of chemicals, abrasion or UV, refer to the Gerber Guard™/Gerber UVGuard™ overlamine product bulletins.

GerberGauge™

Estimating the remaining length on GerberColor foils has never been easier. GerberGauge, a patented length remaining marking system, is imprinted directly along the edge of the GerberColor foil. The markings are displayed as whole numbers – in both meters and yards – and appear approximately every 4 inches (10 cm) over the length of the foil to indicate the minimum amount of foil remaining in the cartridge.



These durability results are based on accelerated weathering tests we believe to be reliable. A significant decrease in performance life of printed graphics may be experienced when graphics have been applied to surfaces which are other than vertical, or when exposed to harsh outdoor conditions, pollutants, chemicals, abrasive contact, or frequent washings. Climatic variations will yield varying results.

	Color	Color Code	Exterior Life (Years)	EDGE/EDGE 2 Length in Meters			EDGE FX Length in Meters		
				25	45	75	15	45	91
GerberColor Spot (GCS)	APPLE GREEN	GCS-196	3		●			●	
	AQUA	GCS-176	4		●		●		
	ARCTIC WHITE	GCS-710	3		●			●	
	ATOMIC RED	GCS-293	3		●		●	●	
	BEIGE	GCS-49	4		●			●	
	BLACK	GCS-12	5		●	●		●	●
	BRICK RED	GCS-603	3		●		●		
	BROWN	GCS-19	4		●			●	
	BURGUNDY	GCS-58	4		●			●	
	CHAMPAGNE GOLD	GCS-601	3		●		●		
	COBALT BLUE	GCS-37	4		●			●	●
	COPPER	GCS-629	3				●		
	DARK CARDINAL	GCS-353	3		●			●	
	DARK GREEN	GCS-56	3		●			●	
	DARK GREY	GCS-641	3		●			●	
	ELECTRIC GREEN	GCS-406	3		●			●	
	FIREBALL RED	GCS-493	3		●			●	
	FOREST GREEN	GCS-66	4		●			●	
	GOLD	GCS-631	3		●			●	
	GREEN	GCS-186	3		●			●	●
	GREY	GCS-31	5		●			●	
	IMITATION GOLD	GCS-105	3		●		●	●	
	INTENSE BLUE	GCS-47	4		●			●	●
	INTENSE RED	GCS-663	3		●			●	●
	KELLY GREEN	GCS-46	3		●			●	
	KUMQUAT	GCS-74	4		●			●	
	LEMON YELLOW	GCS-155	3		●			●	
	LIGHT GREY	GCS-681	3		●			●	
	LIGHT NAVY	GCS-697	4		●		●	●	
	LIGHT PURPLE	GCS-668	4		●			●	
	LIME GREEN	GCS-616	3		●		●	●	
	NAVY	GCS-627	3		●			●	●
	OLYMPIC BLUE	GCS-57	4		●			●	●
	ORANGE	GCS-14	3		●			●	●
	PEACOCK BLUE	GCS-77	4		●			●	
	PINK	GCS-643	2		●		●		
	PURPLE	GCS-38	3		●			●	
	RASPBERRY	GCS-133	3		●		●		
	ROYAL REFLEX	GCS-687	4		●			●	
	RUBY RED	GCS-53	4		●			●	●
	SILVER	GCS-620	3		●			●	
	SUNFLOWER YELLOW	GCS-625	4		●			●	
	TAN	GCS-39	3		●		●		
	TEAL	GCS-96	3		●			●	
	TERRA COTTA	GCS-24	3		●		●		
	TOMATO RED	GCS-13	4		●			●	●
	TRAFFIC GREY	GCS-151	3		●		●		
	VIOLET PURPLE	GCS-628	3		●		●	●	
	VIVID BLUE	GCS-017	3				●		
	WHITE	GCS-10	4		●	●		●	
	YELLOW	GCS-15	3		●			●	●
GerberColor Process Pro (GCP)	PROCESS CYAN	GCP-807	3		●			●	●
	PROCESS MAGENTA	GCP-873	3		●			●	●
	PROCESS YELLOW	GCP-805	3		●			●	●
	PROCESS BLACK	GCP-812	3		●			●	●
GerberColor Transparent (GCT)	BLUE	GCT-617	3		●			●	
	BROWN	GCT-629	3		●			●	
	BURGUNDY	GCT-49	3		●			●	
	GOLD	GCT-105	3		●			●	
	GREEN	GCT-116	3		●			●	
	GREY/SPECTRASHADE	GCX-111	3		●			●	
	ORANGE	GCT-614	3		●			●	
	PLUM PURPLE	GCT-128	3		●			●	
	RED	GCT-643	3		●			●	
	SAPPHIRE BLUE	GCT-37	3		●			●	
	TOMATO RED	GCS-13	3		●			●	
	WHITE/SPECTRATINT	GCX-030	3		●			●	
	YELLOW	GCT-625	3		●			●	
GerberColor Special Effects (GCX)	FLOOD COAT WHITE	GCX-010	4		●			●	
	FLUORESCENT RED ORANGE	GCX-414	▲	●				●	
	JET BLACK	GCS-12	4		●			●	
	METAL FLAKE	GCX-715	0.5		●			●	
GerberColor Gerber ColorSet™ (CSP/CSS)	PROCESS CYAN	CSP-607	3			50			
	PROCESS MAGENTA	CSP-273	3			50			
	PROCESS YELLOW	CSP-605	3			50			
	PROCESS BLACK	CSP-12	3			50			
	COBALT BLUE	CSS-37	3		●				
	WARM RED	CSS-253	3		●				
	BLACK	CSS-12	3		●				
GerberColor Medal (GCM)	BLUE MEDAL	GCM-747	▲	●					
	GOLD MEDAL	GCM-731	▲	●			●		
	RED MEDAL	GCM-783	▲	●					
	SILVER MEDAL II	GCM-721	▲	●			25		

▲ Recommended for interior use only