

# We Have A Way With Water



MaxPack is...  
THE RIGHT  
SOLUTION™

**Hague quality working water saves you time & money.**

Why use multiple cleaning products?  
High quality Hague water will save you  
up to 75% on soap products!



See Your Local Authorized Independent Dealer.

Representative Name:

## How much do you spend to clean up tap water problems?

Somewhere between 17¢ and 20.8¢ of every  
dollar spent at the supermarket is spent for a  
cleaning product

Your Weekly Food Bill Is:	Your Weekly Cleaning Bill Is:	Monthly Cleaning Bill Is:
\$ 40.00	\$ 6.80 - \$8.32	\$ 30.00 - \$ 36.00
60.00	10.20 - 12.48	44.00 - 54.00
80.00	13.60 - 16.64	59.00 - 72.00
100.00	17.00 - 20.80	74.00 - 90.00
120.00	20.40 - 24.96	88.00 - 108.00

## See how WATERMAX® pays for itself.

Based on a water hardness reading of 10 grains per gallon (gpg) with 4 people in the household and a  
water usage of 75 gallons per day - total 300 gallons per day:

	Savings	Current Monthly Cost	Current Annual Cost	5-Yr. Cost	Total \$ Saving
Bottled water	100%	_____	_____	_____	_____
Labor to clean soap scum	100%	_____	_____	_____	_____
Plumbing maintenance & water using appliances	30%	_____	_____	_____	_____
Electricity	22%	_____	_____	_____	_____
Gas	30%	_____	_____	_____	_____
Clothing	33%	_____	_____	_____	_____
Cleaning products	Up to 75%	_____	_____	_____	_____

LITHO USA

©2010

FORM# 54030

RV1009TL





In addition to the H3500 reduction performance previously listed, the following are organic and volatile organic compounds the H3500 is also known to effectively reduce:

Asbestos (Inorganic)  
Benzene  
Carbon Tetrachloride  
Dichlorobenzenes (DCB's)  
Endrin  
Lindane  
Methoxychlor  
p-Dichlorobenzene  
Polychlorinated Byphenyls (PCB's)  
Trichloroethylene (TCE)  
Trihalomethanes (THM's)

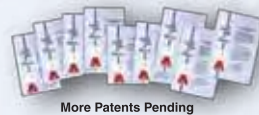
Chloroform  
Bromoform  
Chlordibromomethane  
Bromodichlormethane  
1,1-Dichloroethylene  
1,1,1-Trichloroethane  
1,2-Dichloroethane (EDC)  
Cis-1,3-Dichloropropene  
Chlorobenzene  
Ethylbenzene  
Hexachlorobutadiene

Ortho-xylene  
Tetrachloroethylene  
Tolulene  
Toxaphene  
Trans-1,2-Dichloroethene  
1,1,2,2-Tetrachloroethane  
1,2-Dichlorobenzene  
1,2-Dichloropropane (PDC)  
1,1-Dichloroethane  
2-4-D

## Hague's commitment to excellence:



Each Hague Quality Water unit is designed, built and tested in our technologically advanced testing facilities - unmatched in the industry.



Hague Quality Water International's team of engineers has successfully attained nine patents with more pending. This is just another way Hague is on the cutting edge of water treatment product design.

**25 Year**  
Limited  
Warranty

Why doesn't every water treatment manufacturer offer a 25 Year Limited Warranty? **WATERMAX** is protected by our exclusive 25 year limited warranty. Ask your independent Hague Dealer for a copy!



The WQA Gold Seal assures our products have been tested and validated by the Water Quality Association. This validation assures all electrical components are UL or CSA listed and all components in contact with the treated water are NSF listed or FDA approved.



Powered by an ENERGY STAR® qualified adapter for a better environment

The **WATERMAX** transformer has earned Energy Star certification by demonstrating superior energy efficiency.



Exceeds efficiency standards of every state, including California.  
Operational, maintenance and replacement requirements are essential for the product to perform to specifications.

## Working Water

### Elements affecting your water quality:

#### Hardness:

- Dissolved calcium & magnesium carbonates, measured in grains per gallon:

soft water = 0 to 1 grains per gallon  
slightly hard water = 1 to 3 1/2 grains per gallon  
moderately hard water = 3 1/2 to 7 grains per gallon  
hard water = 7 to 10 1/4 grains per gallon  
very hard water = over 10 1/4 grains per gallon

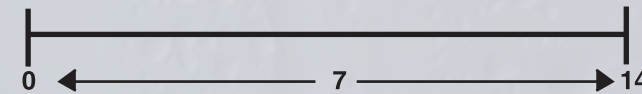
- Combines with soap to form an insoluble curd.
- Precipitates out of the water to form lime deposits in pipes, fixtures & appliances.



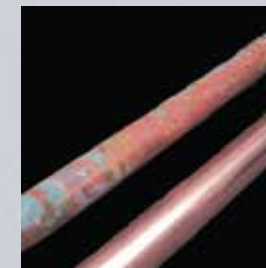
#### pH:

(potential of Hydrogen)

- Used to indicate acidity or alkalinity of the water

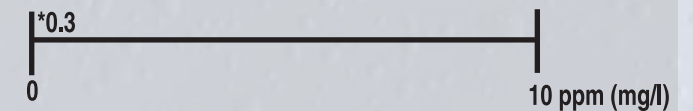


- Corrosive activity can begin at 6.9 pH
- 6.0 pH is 10 times as corrosive as a 7.0 pH
- 5.0 pH is 100 times as corrosive as a 7.0 pH
- Bluish staining & corrosion are caused by a low pH



#### Iron:

- An element often found in ground water (in the form of ferrous iron)
- Is measured in concentrations, usually ranging from 0 to 10 ppm (mg/l).



\* Above 0.3 ppm/mg/l objectionable taste and staining will occur.  
(U.S. Public Health Service Drinking Water Standards.)



#### Sulfur / Other:

- A colorless gas which gives off an offensive "rotten egg" odor.
- Hydrogen sulfide promotes corrosion due to its activity as a weak acid.
- Hydrogen sulfide in the air causes silver to tarnish in a matter of seconds.
- Chlorine causes offensive taste and odor.







**WATERMAX® regenerates on demand, by calendar or by exact water usage.**

The flexibility of the solid state System Control makes it possible. A 12-volt low voltage power supply powers the Systems Control.

- Easy To Set
- Maintains program settings during power outages
- Absolute Brining - Never Wastes Regenerant
- Capacity Guard - Protects Reserve Bed
- Languages: English, Spanish, French
- Calculates Compensated Hardness
- Gallons or Liters
- No Hazardous Voltages



**The WATERMAX® super quiet control valve...**

- Only one internal moving part to ensure long life and reliable operation
- Corrosion Resistant Materials
- Built-in Bypass with Test Port
- Blending Valve is installer-adjusted to precisely match your preference.
- 1" Valve Porting - allows high flow and minimal pressure drop.
- Hydro-Slide Piston Teflon™ - encapsulated for years of trouble-free operation
- Tested for over 100,000 cycles with no detectable wear
- Valve piston is controlled by WaterMax® exclusive magnetic technology - no solenoids or switches.



**Fill Plug**

- Provides easy media accessibility for maximum serviceability as water conditions may change... a costly add-on with conventional units.



**H3500 Percentage Reductions certified by the Water Quality Association:**

• Arsenic .....	99.3%
• Barium .....	99.8%
• Cadmium .....	99.0%
• Chromium (Hexavalent) .....	99.7%
• Chromium (Trivalent) .....	99.2%
• Cyst .....	99.9%
• Flouride .....	97.0%
• Lead .....	99.4%
• Nitrate .....	94.3%
• Nitrite .....	82.1%
• Selenium .....	94.0%
• TDS .....	96.7%



**The completely non-electric H3500 is 300% more efficient than other R.O. systems**

**Storage Tank:**  
Stores up to 3.1 gallons of life support water

**Pump:**  
Non-electric pump fills storage tank five times faster than conventional R.O. systems



**Membrane:**  
Provides up to 24 gallons per day  
Optional 36 gallon per day membrane available

**Dual Function Pre-Filter:**  
Filters sediment and smaller particles down to one micron in size. Carbon block removes chlorine taste and odor.



# Life Support Water

Life support water is essential to good health and well being. Wouldn't you like to have the assurance and peace of mind in knowing your family can start using the cleanest and most wholesome water available for everyone?



85% of a baby's body is water.

70% of an adult's body is water.



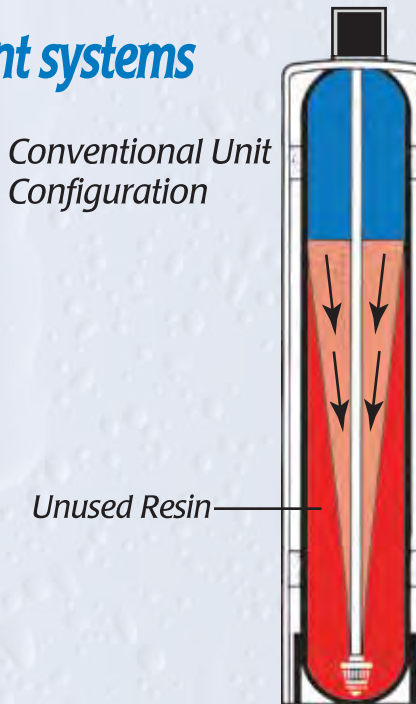
# Not All Water Conditioners Are Created Equal



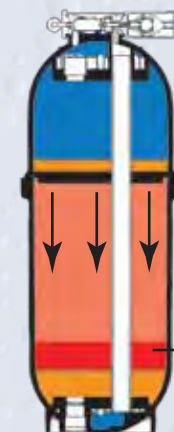
## Custom designed treatment systems

Only **WATERMAX**® can offer a patented approach to solving your home's specific water needs. The WaterMax® multi-compartment media tank offers complete flexibility in media configuration and assures more usable resin capacity.

Conventional Unit Configuration



**WATERMAX** Configuration



- Allows regeneration with clean, soft water.
- Up to 80% less time
  - Up to 50% less regenerant
  - Up to 80% less water
  - Prevents water channeling
- Provides conditioned water for cleaning the resin bed.

## Why **WATERMAX** is the Right Solution™...

**Compartment 1**  
ULTRA-FIL/CHLOROSTAT - mixed media in this compartment is a **self-cleaning** whole-house dirt and sediment filter which also reduces chlorine taste and odor and extends the life of the resin bed. There is never a need for replacement filters or maintenance.



No In-Line Filter Necessary

**Compartment 2**  
ULTRA-CLEAR provides carbon filtration to **eliminate chlorine tastes, odors and organics.**

**Compartment 3**  
ULTRA-SOFT utilizes high-capacity fine mesh resin, vacuum packed for maximum treatment of hardness.

The self-cleaning Bacteriostat, here, inhibits bacteria growth in the resin bed.

Listed with the U.S. EPA as a bacteriostatic device.  
U.S. EPA #54369-OH-001.

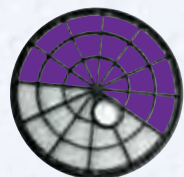


\*Illustrations depict only a few of the many possible configurations. See manufacturer's specifications.



## Why WATERMAX® is the Right Solution™...

ULTRA-FIL - in this compartment is a **self-cleaning** whole-house dirt and sediment filter that extends the life of the resin bed. There is never a need for replacement filters or maintenance.



No In-Line Filter Necessary

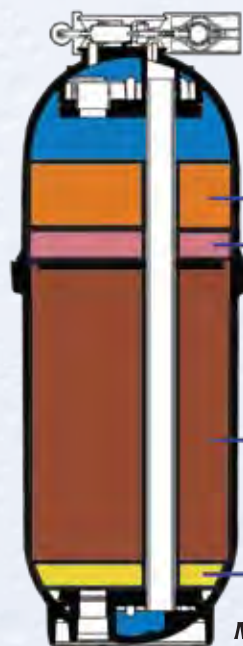
ULTRA-SOFT utilizes high-capacity fine mesh resin, vacuum packed for maximum treatment of hardness.

The **self-cleaning** Bacteriostat, here, inhibits bacteria growth in the resin bed.

Listed with the U.S. EPA as a bacteriostatic device.  
U.S. EPA #54369-OH-001.

### For Sulfur, Iron & Hardness

Eliminates Sulfur Odor; Softens and Filters



Sulfurstat  
Ultra-Fil

Ultra-Soft

Bacteriostat

Model: 62 APQ\*  
for Well Water

Attractive space saving design fits in perfectly with other appliances.



\*Illustrations depict only a few of the many possible configurations. See manufacturer's specifications.

### Benefits of a Built-In Filter:

- Filters sediment to 20 microns ... smaller than the human eye can see.
- Save money on replacement filters.
- Save time, labor and mess when replacing filters.



Model: 62 AMQ\*  
for Well Water

Highest Quality Water

Most Efficient

Safety Shut-Off System to prevent the possibility of overflow.

Grid Plate to provide clear well area ensuring consistent brine concentration.

## 2 Sources of Water:

City



- 2% used for in-home use
- 98% used for industrial and other uses

Well



- 100% used for in-home use

## 3 Types of Water:

Utility Grade

It's For:

- Watering your lawn, plants, etc.



Working Grade

It's For:

- Bathing
- Washing clothes
- Making essential household systems last longer
- Saving energy when heating water



Life Support

It's For:

- Drinking
- Cooking

It Requires:

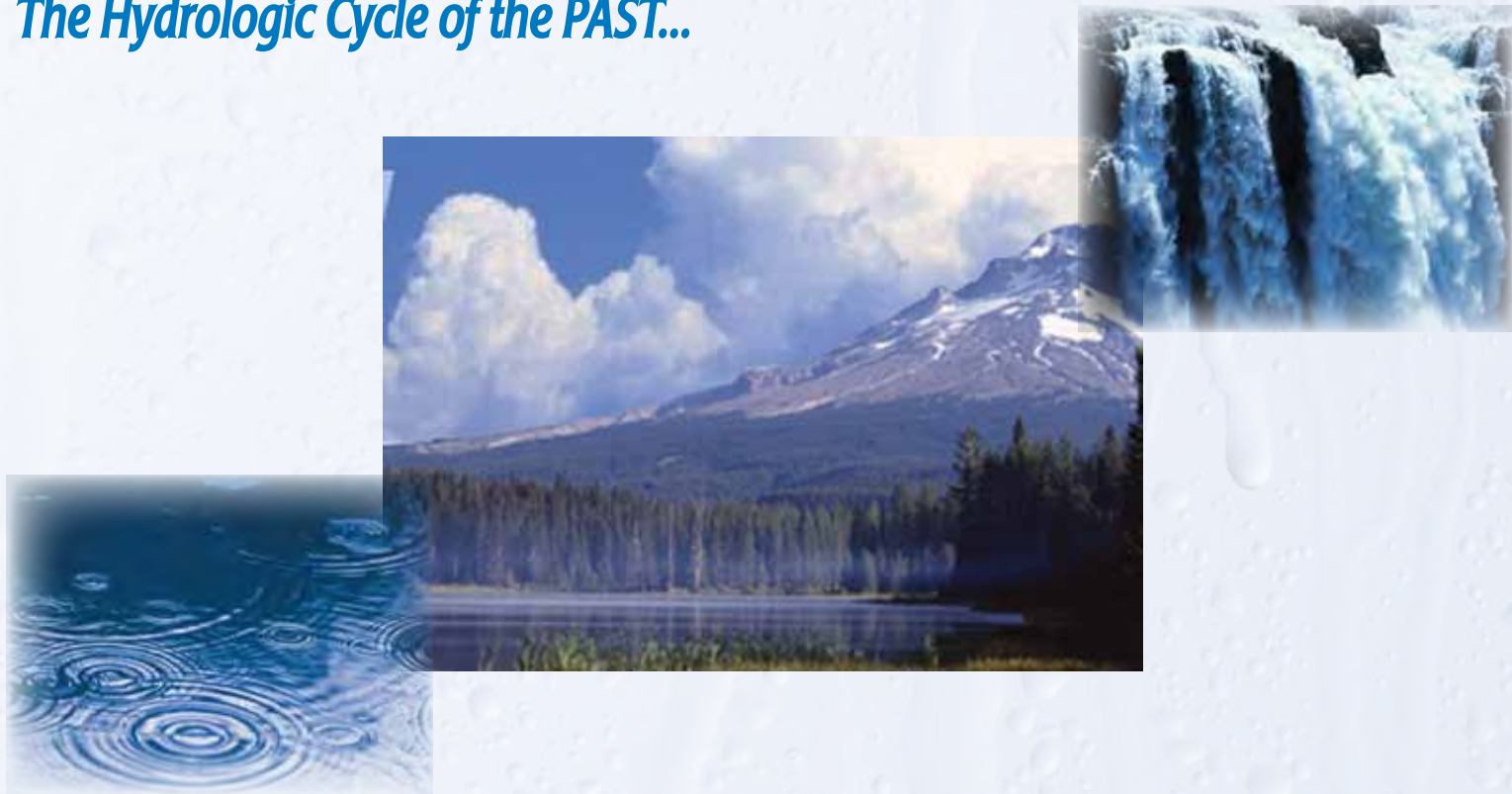
- Highest quality water treatment





# There Is NO New Water

*The Hydrologic Cycle of the PAST...*



*The Hydrologic Cycle of TODAY...*



# How Much Dissolved Rock Runs Through Your Home?



*An average family of four uses approximately 100,000+ gallons of water per year, equaling \_\_\_\_\_ lbs./year of "rock" or \_\_\_\_\_ bricks.*





## Why heat your water through bricks?

Hague will save you money on your water heating bills.

- Hard water can contribute to the build-up of a layer of insulation between the water and the heat source.
- "1/8 inch scale means 33% more fuel is required.
- 21.68% more energy is consumed by the electric water heaters tested on hard water.
- 29.57% more energy is consumed by gas water heaters tested on hard water.
- Use of treated water saves 90% of the replacement costs of a water heater.

Water Quality Association



How Scale Affects Water Heater Cost

Additional Scale	Added Cost %	Added Cost \$	Total Annual Cost \$
0" (New)	0%	\$0	\$201
1/8"	33%	\$66	\$267
1/8"	33%	\$88	\$355
1/8"	33%	\$117	\$472
1/8"	33%	\$156	\$628
Total 1/2"		\$427	

## Quality Water Treatment Since 1960



## Manufacturing



## Research & Engineering



## Sales & Service





## What sets Hague Quality Water International apart?

- Established in 1960.
- AAA-1 Dun & Bradstreet rating.
- Water treatment is our only business.
- Made in the U.S.A. and sold throughout the world.
- Every unit is manufactured in-house and goes through total system testing.
- On the cutting edge of research and technology.
- State-of-the-art equipment built for the 21st century.
- The oldest major water treatment manufacturer under continuous family ownership.



**Pictured Left to Right:**  
Bill Hague - Founder  
Bob Hague - President  
Jeff Hague - Owner, Hague Water Conditioning  
David Hague - Vice President

Go from this...



To this...

