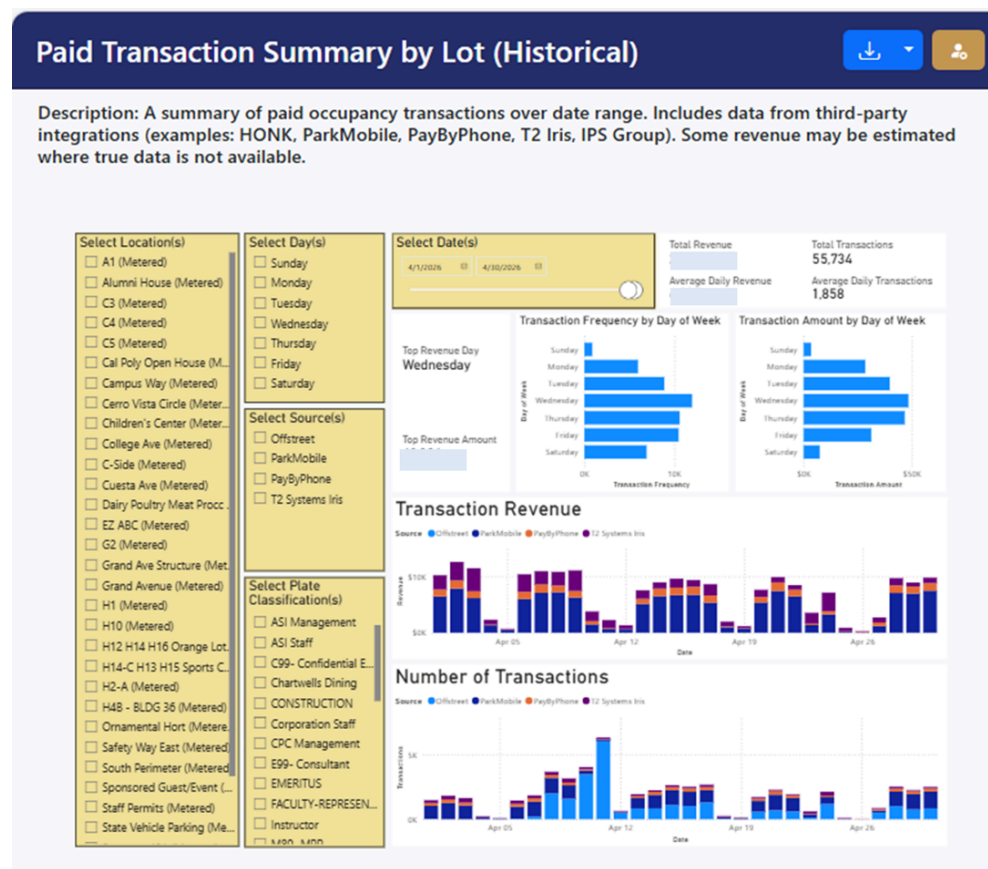




What's inside...

- Metric of the Month
- Lane Counter
- IPMI Booth #946
- Something Funny

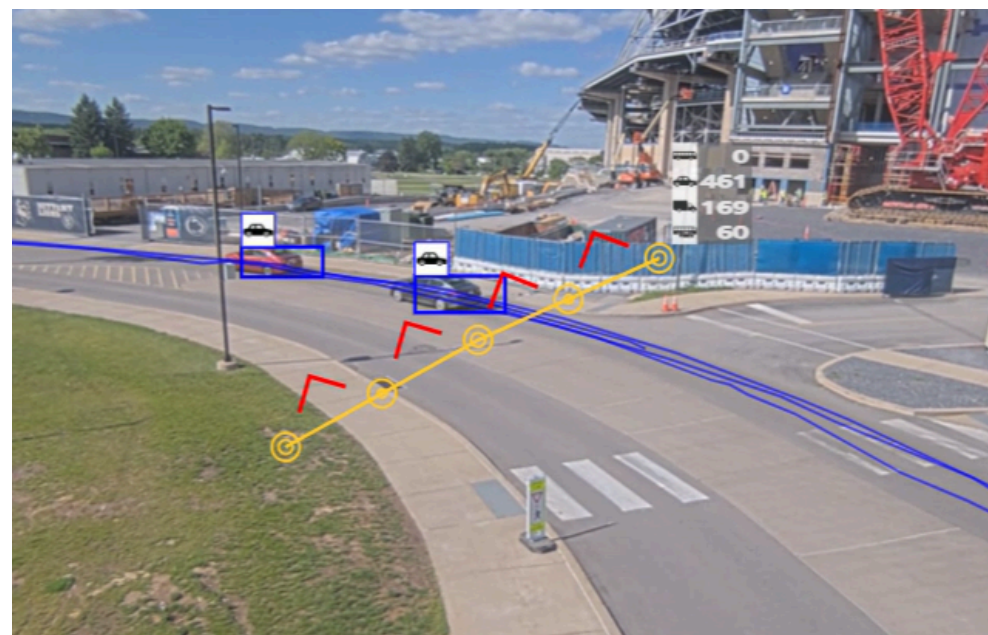
### Metric of the Month



We've enhanced the Paid Transaction Summary by Lot to include the Parker Classifications from your permit management system. In a single report, you can now see every transaction from your payment sources and clearly identify who is paying for parking.

You can also filter results by Location, Day of Week, Payment Data Source, and Time Frame to view payments by Transaction volume and Revenue. From there, you can export the data or schedule reports to run automatically.

### Lane Counter - Seeing is Believing



A single Lane Counter camera can simultaneously count ingress, egress, and bidirectional traffic. Delineation is not required, and speed is not an issue. The most common configuration is continuous or intermittent power from a pole or building with cellular communications.

Lane Counter is an accurate, hardware-lite, and affordable approach to counting in surface lots or garages. With video, seeing is believing.

### Visit Mistall at Booth #946

June 14-17, 2026

# We are Exhibiting.

## #IPMI2026

Join us at the industry's premier parking, transportation, and mobility Conference & Expo in Milwaukee, Wisconsin.

Conference & Expo 2026 | MILWAUKEE  
parking-mobility.org

### LPR Countermeasures



[Contact Mistall](#)

