



What's inside...

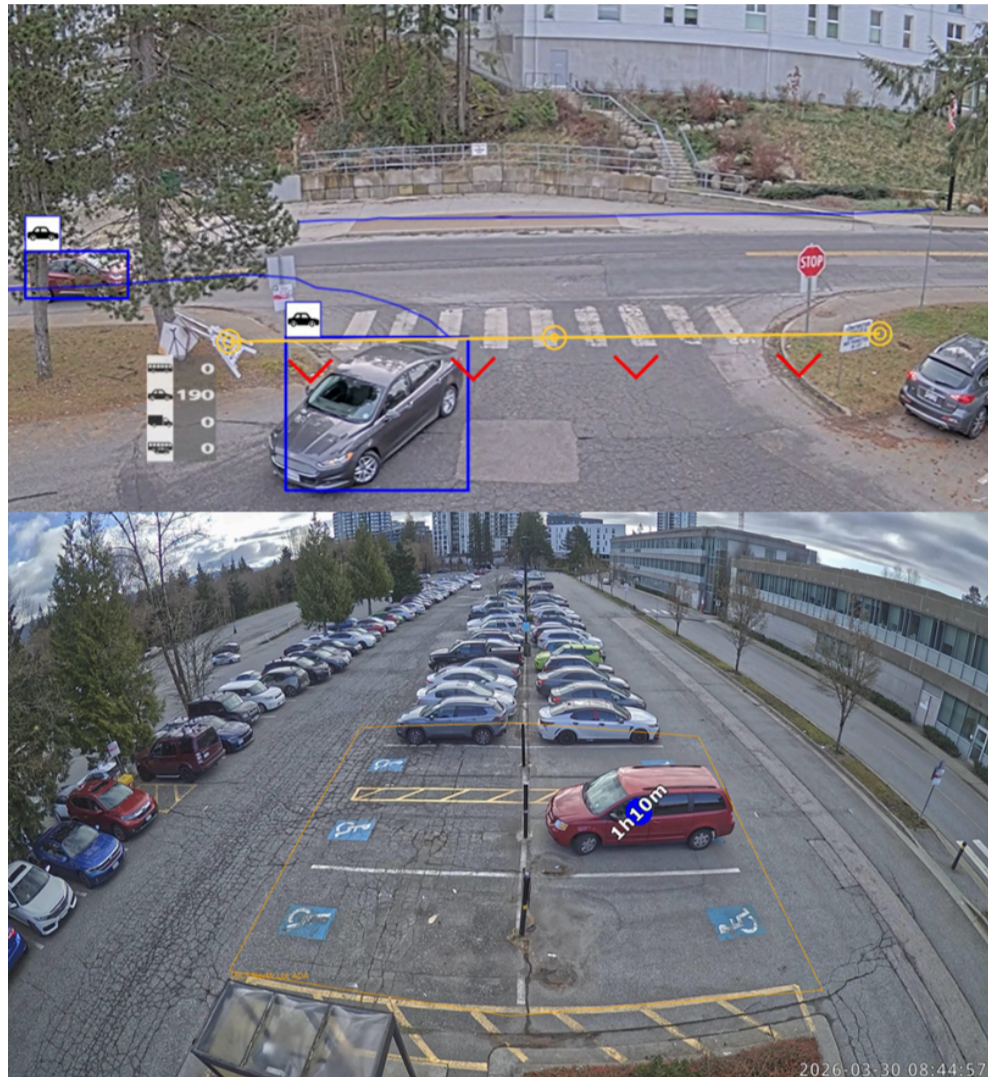
- Visualization of the Month
- Welcome, Simon Fraser University!
- Where to stick your mFrames
- Something Funny

Visualization of the Month

Lot Selection	Day Selection						
	Mon	Tue	Wed	Thu	Fri	Sat	Sun
G11 - Lake Ave Garage (Levels 4-6)	351	351	351	174	119	113	168
G12 - White Ave Garage (S-12/CC-21)	1911	1911	1911	1911	1911	1911	1911
G13 - 11th St Garage (CC-19)	845	845	845	845	845	845	845
G13 - 11th Street Garage (S-7)	845	845	845	845	845	845	845
G15 - Clinch Ave (NC-17)	845	845	845	845	845	845	845
G16 - Volunteer Blvd Garage (CC-9)	845	845	845	845	845	845	845
G16 - Volunteer Blvd Garage (CC-15)	845	845	845	845	845	845	845
G16 - Volunteer Blvd Garage (S-2/3)	845	845	845	845	845	845	845
G17 - Terrace Ave Garage (S-12 / S-13/CC-19)	845	845	845	845	845	845	845
G3 Garage (S-30)	845	845	845	845	845	845	845
G4 Garage (S-30)	845	845	845	845	845	845	845
G7 Garage (CC/Staff)	845	845	845	845	845	845	845
P-01 (Circle Park Visitor Parking)	845	845	845	845	845	845	845
P-02 (Philip Fulmer Visitor Parking)	845	845	845	845	845	845	845
P-03 (Dodd Nelson Visitor Parking)	845	845	845	845	845	845	845
P-04 (Jed Head Summit Visitor Par.)	845	845	845	845	845	845	845
P-05 (Ded Blvd West Visitor Parking)	845	845	845	845	845	845	845
P-06 (Ded Blvd East Visitor Parking)	845	845	845	845	845	845	845
P-07 (G7 Garage Visitor Parking)	845	845	845	845	845	845	845
P-08 (S-10 Level 1 Visitor Parking)	845	845	845	845	845	845	845
P-09 (S-10 Rooftop Visitor Parking)	845	845	845	845	845	845	845
P-10 (Philip Fulmer Visitor Parking)	845	845	845	845	845	845	845

Heatmaps are a great way to digest information at a glance. This one is pretty basic and shows the average availability for the selected day and location.

Welcome, Simon Fraser University!



SFU's large North Lot is being counted with (4) Lane Counters and (4) Stall Counters. Each Lane Counter covers one of the wide entry/exit portals for an overall lot count, while each Stall Counter covers some specialty areas like Accessible and Reserved stalls. The overall count from Lane Counter, less the Accessible and Reserved counts from Stall Counter, represents the General Area, which SFU refers to as 'Search Stalls' (AKA gen pop).

Stick your mFrame in your mPark

Ash
Good Parking Availability
Updated just now

Popular Times - Monday

mFrame → Availability
61 / 188

[Interactive Campus Map](#)

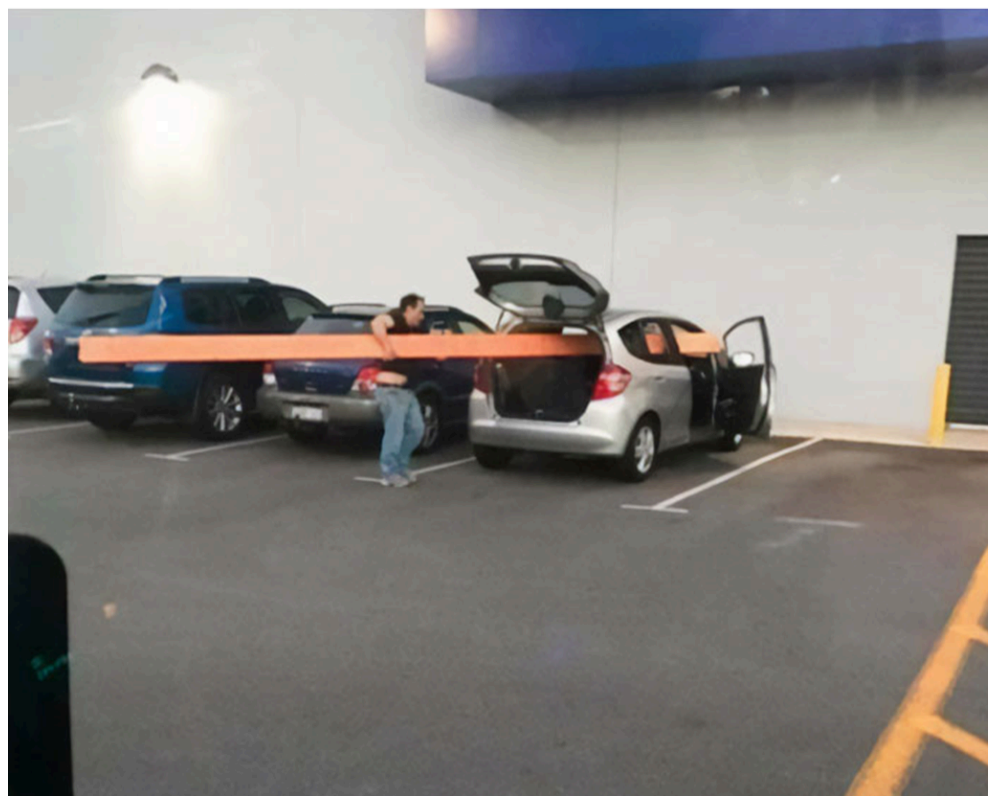
[Purchase a Permit](#)

[Mobile Pay](#)

Pro Tip: There are many places you can stick an [mFrame](#). mFrames are flexible HTML content, usually containing parking availability data, that are created in Mistall and can be sourced for your webpages, apps, and displays. The mFrame content look and feel is endless.

In the [mPark](#) page above for the Ash Lot, this customer has added a simple availability mFrame in the description area showing how flexible mFrames can be.

- Step 1: Buy a compact car
- Step 2: Immediately test its capabilities



[Contact Mistall](#)

