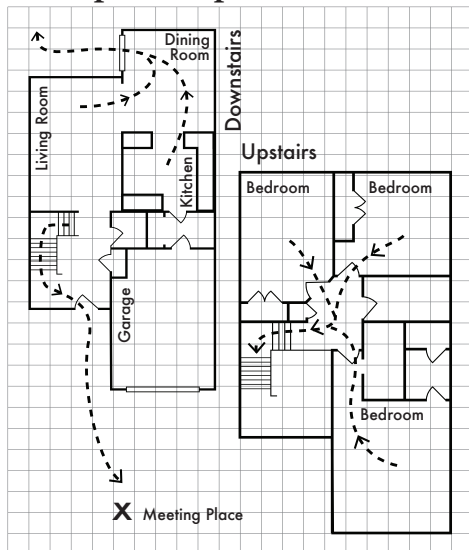
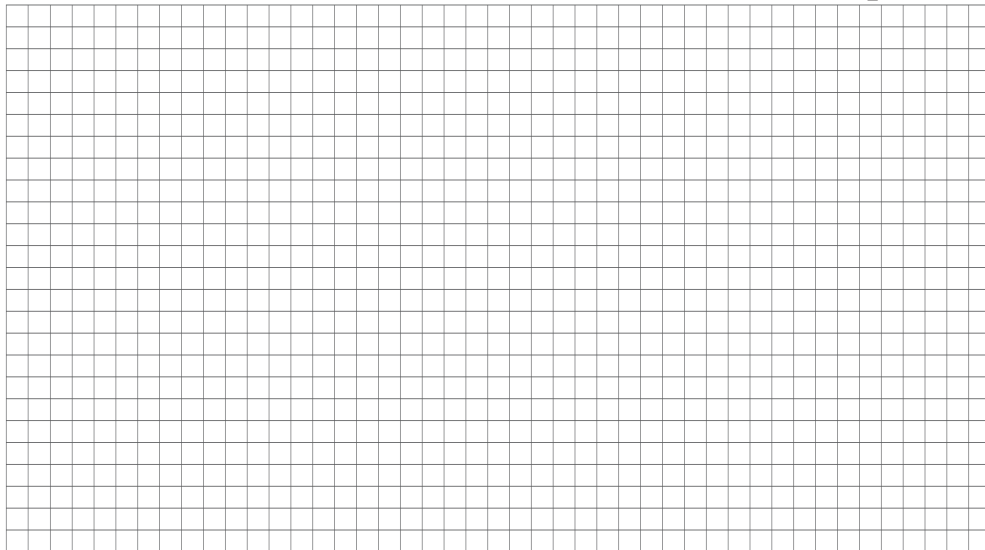




Example Escape Plan:



Draw Your Own Escape Plan:



Our Meeting Place Is: _____

Fire Safety Tips

ALWAYS BE PREPARED

- Have working smoke detectors throughout the home.
- Planning & Prevention are keys to fire safety.
- Make sure to review all fire safety material & escape plan monthly.
- Protect yourself and your family against fire by taking simple precautions.
- Every household should have an escape plan. Have a family meeting to discuss what to do in case of a fire.
- Learn all the exits and know how to unlock doors and windows. Know two ways out of each room, especially bedrooms.
- Have an established meeting place outside where everyone gathers after escaping a fire.
- Discuss the escape plan and meeting place with children. Make sure everyone knows where to meet.

EMERGENCY TIPS

Get Out! Stay Out!

If you smell smoke, hear a smoke alarm, or see flames, get everyone out! Don't wait for any reason.

Crawl Low Under Smoke!

If you encounter smoke while you are escaping a fire, use another exit route. If you must escape through smoke, remember that heat and smoke rise so cleaner air is near the floor. Crawl on your hands and knees, keeping your head 12 to 24 inches above the floor. Make the children go first and follow close behind.

Stop, Drop & Roll!

If your clothing catches on fire:

- Stop, Don't Run.
- Drop to the ground. Cover your face with your hands.
- Roll over and over until the fire goes out.

IN CASE OF FIRE

- Dial 911 and give the Fire Department the full address of the fire. Stay on the phone until you are told to hang up.
- Make sure no one goes back inside for any reason. Keep everyone a safe distance from the fire and out of the way of the firefighters and rescue team.
- If smoke or flames are blocking the way to the children's bedrooms, go straight to the meeting place and call the fire department. Tell them that there are children trapped inside and where they are.

Test All Smoke Detectors Every Month. Replace Batteries on All Smoke Detectors Every Year Unless Yours Has A Ten Year Battery. Replace and Dispose of All Smoke Detectors Every Ten Years.