

# WELCOME

Welcome to London, and our charming 18th-century farm house.  
We hope you enjoy your stay and make yourself at home.

This welcome book contains all the information you should hopefully need about the property, the local area, amenities, and important health and safety guidelines for a pleasant stay in London.

*A few things to note:*

- **Mondays** .....the gardeners will likely be there from around 8am to 1pm.
- **Wednesdays** ..... please move the black and blue bins from the back of the house onto the road for collection early Thursday morning.
- **Thursdays** ..... please move the black and blue bins marked “The Farm House” from the road to the back of the house.

Thank you for choosing to stay at The Farm House. If you would like to experience one of our other properties, check out The Old School House in Ironbridge at [WWW.THENAKED.WORLD/STAYS](http://WWW.THENAKED.WORLD/STAYS)

## The Farm House

Lisa & Richard



### ADDRESS

Mill Hill, NW7 1AR

### # OF GUESTS

6 —6

### BEDROOMS

3

### BATHROOMS

3

### ABOUT THE SPACE

- Fresh towels and linens provided
- TV inc Netflix and standard channels
- Wifi
- Large portable speaker
- Coffee machine
- Blow up bed for 2 extra guests with linens

# Check in

**~ 3PM**

## **DIRECTIONS & KEYS**

## **ADDRESS**

Details provided to those with a confirmed booking.

## **OUR HOUSE RULES**

- No smoking or vaping inside the property.
- No pets or animals.
- No shoes on the carpets.
- There is a first aid kit in the kitchen. Call 999 in an emergency.
- 8 guests max, and you must book for the number of people staying in the property.
- Keep noise to a respectable level.
- Do not remove items or fixtures from the property.

# Check out

**~ 10AM**

## **DIRECTIONS & KEYS**

We do our best to accommodate late check-outs (depending on availability), so please get in touch with us if you feel you might need a little more time. We hope you have a wonderful stay and if you have any questions or need assistance, please don't hesitate to reach out.

- Ensure all windows and doors are locked.
- Dispose of rubbish in the bins outside. If at the house on a Wednesday, please put the blue & black bin on the road for collection
- Leave used towels in the downstairs bathroom. Sheets can stay on the beds — no need to make the beds.
- Return keys to the lockbox.



# About

## WELCOME

Mill Hill is a leafy suburb in North London that blends village charm with city convenience.

The Farm House looks out of Totteridge Valley, within which you can discover many beautiful walks. Check out some of the great finds in the local area on page 6. And find transport links on page 7.

Known for its open green spaces, offers a peaceful escape from the bustle of central London. With a mix of period homes, modern developments, and excellent schools, Mill Hill attracts families and professionals alike. The local high street, known as Mill Hill Broadway, offers a range of cafes, shops, and restaurants, and the area is well-connected via Thameslink and nearby motorways, making it an ideal spot for those seeking a slower pace without losing touch with the city.

**Email us at**  
hello@thenaked.world

**Phone / Message us...**  
Lisa (on WhatsApp) +64 22 513 2982  
Richard (on WhatsApp) +64 27 453 6054  
Lydia (neighbour) +44 7309 100133

**Important Contacts**  
**Emergency Help — call 999**

**Non-Emergency Medical Help — call 111**

**Barnet Hospital A&E Department**  
Wellhouse Lane, Barnet, EN5 4BZ  
020 8216 5003

**Regent Pharmacy**  
7 Salcombe Gardens, London NW7 2NU

**First Aid kit**  
In the kitchen draw below the sink.

**Fire Extinguisher**  
A fire extinguisher and fire blanket are located in the kitchen under the sink in the righthand cupboard. See the Fire Evacuation Plan at the property.

**Security**  
Please lock all doors and windows when leaving the property.



# A Brief History

## **MILL HILL, NORTH LONDON**

Mill Hill's name dates back to at least the 14th century, derived from a windmill that once stood on the hill — 'Myllehill' in early records. Though the mill itself is long gone, its legacy lives on in the name of this picturesque suburb.

Originally a rural hamlet within the ancient parish of Hendon, Mill Hill developed slowly over centuries, with much of its land used for farming. The area's elevated position and clean air made it a popular retreat for the wealthy in the 17th and 18th centuries. Large estates and country houses began to appear, including Belmont, Highwood Ash, and Littleberries.

In 1807, the foundation of Mill Hill School, a prestigious independent school, marked a turning point in the area's development. Founded by nonconformist Protestants, the school drew intellectual and religious figures, helping to shape Mill Hill's identity as a place of learning and reflection.

The arrival of the railway in 1868 (Mill Hill Broadway station) and later the tramway and the Underground extension (though never completed to full service) spurred suburban growth. The interwar years saw the development of many residential streets, turning Mill Hill into a commuter suburb while retaining its spacious, semi-rural character.

Mill Hill also played a strategic role during World War II. It housed military barracks and was home to the National Institute for Medical Research, which made significant contributions to scientific advancements, including early work on antibiotics and immunology.

Today, Mill Hill balances its historical roots with modern amenities. With remnants of its past visible in local architecture, green spaces, and long-standing institutions, it remains one of North London's most desirable and character-rich areas.

## **WALKS THROUGH TOTTERIDGE VALLEY**

From the garden of The Farm House, a panoramic view opens across the serene Totteridge Valley — a patchwork of meadows, hedgerows, ancient woodlands and gentle hills that feel worlds away from the pace of London life. This protected ribbon of green belt is a haven for walkers, runners, and nature lovers alike.

Winding footpaths take you past grazing horses, over wooden stiles, and through quiet copses where the seasons show off in full. Spring brings a carpet of wildflowers, summer is golden with long grasses and butterflies, while autumn turns the woods into a blaze of colour. In winter, the valley takes on a still, hushed beauty.

One of the most popular routes follows the Dollis Brook, a gentle stream that weaves its way through the valley, home to kingfishers, herons and dragonflies. The Totteridge Fields Nature Reserve offers more secluded paths, with ancient hedgerows and rare plant life tucked into its quiet corners.

Whether you're heading out for a morning dog walk, a long afternoon ramble, or simply stepping outside to breathe in the view, the Totteridge Valley offers peace, beauty, and a deep sense of connection to nature — right on your doorstep.



## THE FARM HOUSE

A Listed Legacy in the Heart of Totteridge Valley tucked into the tranquil folds of Totteridge Valley, The Farm House on Burtonhole Lane, NW7 is a rare example of an 18th-century rural dwelling that has stood the test of time. Once part of the original Burtonhole Farm, a working cattle farm that continues its agricultural life next door, the house forms part of Mill Hill's living rural history.

### Architectural Significance

This Grade II listed farmhouse dates to the 18th century and remains one of the finest preserved examples of its kind in North London. The building is cedar-shingled with a red-tiled hipped roof, two storeys, and three symmetrical sash windows, exuding quiet Georgian charm. At its centre stands an original pedimented doorway with a delicate dentilled cornice, framed by retained 18th-century glazing—all protected under its listing status.

Its listing, first granted on 7 April 1983 and amended slightly in 1985, covers both the building itself and any original features or curtilage pre-dating 1948, meaning the home is protected in both form and historic setting.

### Farmstead Origins & Heritage Setting

Originally the residential heart of Burtonhole Farm, The Farm House was central to the agricultural rhythm of the valley. The surrounding timber-weatherboarded farm stables, featuring striking herringbone brick detailing, are also acknowledged on Barnet's Local Heritage List, underlining the site's value not just as a standalone home but as part of a functioning farmhouse complex of historical importance.

The location itself tells a deeper story. Burtonhole Lane is a designated green lane, with roots stretching back to a time when these paths served horse-drawn carts and herders rather than dog-walkers and ramblers. The home lies near the ancient Ridgeway and close to sites of archaeological interest, where 18th-century domestic artefacts — including bowls dated between 1700–1770 — have been discovered, reinforcing the long-standing human presence and domestic life in the area.

### A Rural Life Preserved

Today, The Farm House stands as a rare fragment of London's pastoral past. Set against the backdrop of Totteridge Valley's green belt, with uninterrupted views across ancient hedgerows, meadows, and woodland, the house offers a window into a quieter world — one that still breathes through the working fields next door and the protected landscape all around.

Whether admired for its architectural grace, its connection to Mill Hill's agricultural past, or its place within a still-functioning farmstead, The Farm House is not just a home — it's a heritage landmark, grounded in the land it has served for over two centuries.



# Things to do

## **Finchley Nurseries**

A large garden centre with a cafe and farm shop with some lovely supplies, a 2 minute walk down Burtonhole Lane. Turn right out of the house.



## **Totteridge Valley**

Go for stunning walks through Totteridge Village. Turn left or right out of the house to enter the valley.

## **The Adam & Eve Pub**

The local pub is at the top of Burtonhole Lane. Good food and a beer garden.



## **Mil Hill Cricket Club**

Check online for match days at [www.milhillvillagecricketclub.co.uk](http://www.milhillvillagecricketclub.co.uk)

## **The Orange Tree Pub**

Walk through Totteridge Valley to this beautiful pub on the other side.

## **Mill Hill Broadway**

The area's high street. Here you'll find restaurants, cafes, shops, and more.



## **Head into London**

London is endless in its experiences. On the Northern Line train alone, you'll find major stops such as Camden, Euston, then all of central London is heaving with places to explore.

## **FOOD & DRINK**

- Waitrose is the largest supermarket, near Mill Hill East Station.
- Finchley Nurseries is the closest cafe.
- The Adam & Eve is the closest pub.



# Transport

## Mill Hill East (Train)

- London Underground, on the Northern Line, Zone 4.
- From The Farm House it takes 20 mins to walk to the station or 4 mins to drive.
- Head south to go into central London.
- Mill Hill East to Camden Town = 19 minutes
- When heading into London be aware that the Northern Line splits into two — Bank branch & Charing Cross branch.
- On your way home, make sure you are on a train heading to High Barnet.
- Trains run

## Mill Hill Broadway (Train)

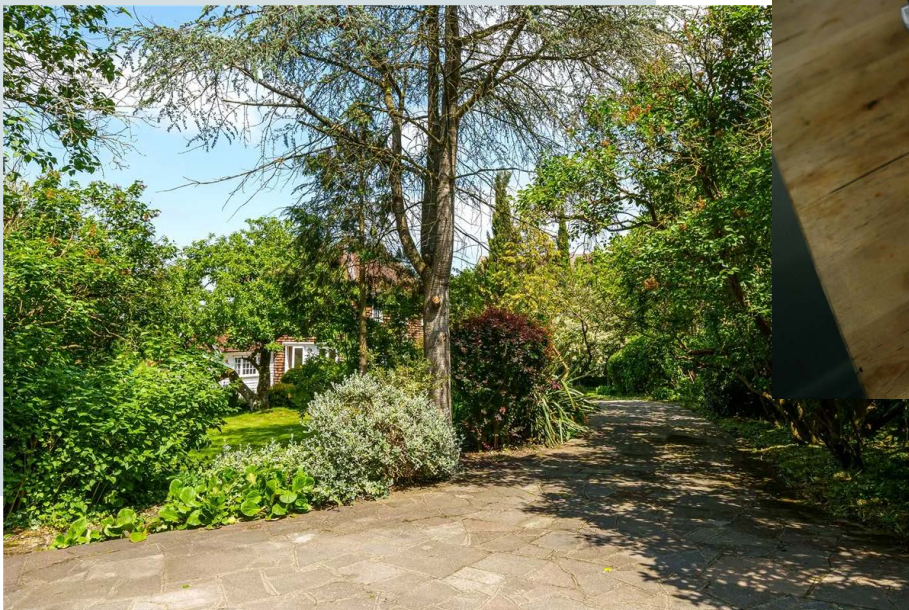
- Thameslink line, Zone 4.
- Mill Hill Broadway to Kings Cross St Pancras = 19 minutes
- Mill Hill Broadway to Gatwick Airport = 1 hour 20 minutes
- Mill Hill Broadway is at one end of the local high street with restaurants, cafes, and shops.

## Bus Routes

- 240 & 382  
from Medawar Drive
- 221  
from Bittacy Hill

## Taxi

- Uber services Mill Hill.



HAVE A WONDERFUL STAY