

# Pump Trak

## Web-based pump service tracking system

### FEATURES

- Real-time information
- High-resolution images
- Detailed service records
- Internet enabled
- Invoice information

### BENEFITS

- Expedites failure analysis
- Creates transparency
- Improves decision making

Pump Trak is a comprehensive service data repository developed in-house and integrated into the operating procedures of every Don-Nan pump shop, enabling selection of appropriate equipment based on past and present issues faced in each well.

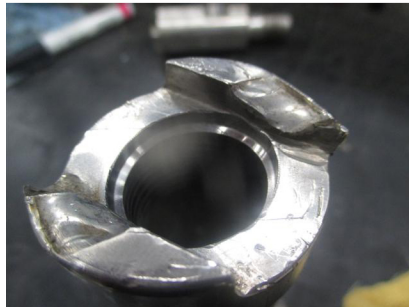
### Track why and how a failure occurred

Detailed service records enable operators to make more informed decisions about their pump specifications. Every pump part that enters or leaves a Don-Nan pump facility is tracked by pump technicians, who enter data as part of their normal workflow.

### Access comprehensive historical records

Operators can view historical records of pump service and repairs, including installation and pull date, days in use, the cause of failure, service date, foreign material logging, service type, a pre- and post-service description, and the name of the pump technician that serviced the pump. Every entry for pump repair includes high-resolution images and cost information.

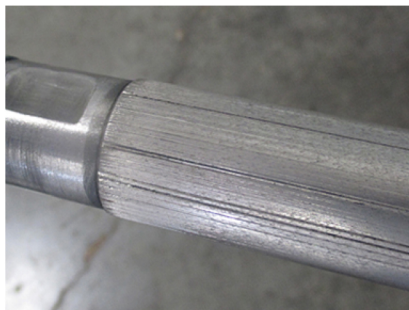
### Sample of actual service images and descriptions



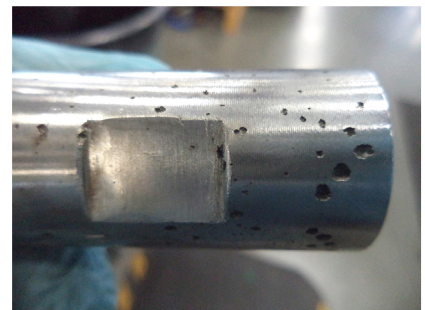
*Severe damage to valve rod guide.*



*Rod pump barrel with internal corrosion pitting.*



*Plunger with evidence of sand cutting.*



*Cage with external corrosion pitting.*