



# MC174 CRM Mini Crane

The Maeda MC174 sets the standard that other mini cranes try to achieve. Its super slim width of 590mm coupled with its 1.72 ton lifting capacity make it absolutely unparalleled. This fantastic machine also retains all of the other benefits of the machines in the Maeda range including a 2 year warranty, remote control and unrivalled build quality and usability.

## Features at a glance...

- 1.72 Ton Max capacity
- 5.5m Max Working Height
- Super Slim Body Width (590mm)
- Low Ground Pressure
- Manoeuvrability & Stability
- Programmable Moment Limiter
- Hydrostatic Transmission
- Tilt Alarm
- Rubber Tracks
- High Speed Winch
- 2 Travel Speeds
- Remote Control
- Optional 300kg Searcher Hook
- 2 Year Warranty

## More Images...



... consider the possibilities



## Specifications

|                    |  |   |
|--------------------|--|---|
| Capacity           | Maximum  | 1.72t x 1m  |
| Working Radius     | Maximum  | 5.17m x 220kg   |
| Lifting Height     | Maximum  | 5.5m x 770kg  |
| Dimensions         | MC174 CRM  | 2000mm x 590mm x 1300mm   |
| Weight             | MC174 CRM<br>Hook Block Weight   | 1290kg<br>20kg  |
| Hook Speed         | Maximum  | 10.9m / min. (4 falls, 3rd layer)   |
| Single Line Speed  | Maximum  | 43.6m / min. (3rd layer)  |
| Hoist Rope         | Type   | IWRC 6 x Fi (29) Ø 6mm x 35m  |
| Telescopic System  | Boom length<br>Telescoping speed<br>Boom type  | 1.83m - 5.45m<br>3.62m / 15 sec.<br>Fully automatic 4 section pentagonal telescopic boom                                    |
| Boom Hoist System  | Hoist angle / speed  | 3° - 77° / 12 sec.  |
| Slew System        | Slew angle / speed   | 360° continuous / 2.0 rpm   |
| Outrigger System   | Type<br>Maximum extended dimensions  | 4 Multi position box type. Hydraulic cylinders with lock valves<br>(Length) 3335mm x (Front) 3060mm x (Rear) 2885mm         |
| Traction System    | Drive<br>Travel speed<br>Gradability<br>Ground length x width<br>Ground pressure   | Hydrostatic type, stepless forward and reverse<br>0 - 3.3km/h<br>20°<br>1044mm x 180mm (Track dimensions)<br>0.34 kgf / cm² |
| Engine             | Model<br>Type<br>Rated output<br>Starting method<br>Fuel tank capacity   | Mitsubishi GB400LE<br>1 Cylinder, Air Cooled, Petrol<br>6.6kW / 1800 rpm<br>Electric<br>Petrol / 6L                         |
| Standard Equipment | Cable remote control, overwind protection, hydraulic safety valves, working light, hour-meter, 4-fall hook block, black rubber tracks, moment limiter, EMO switch, level, tilt alarm, working status lamp. |   |
| Optional Equipment | White rubber tracks, single fall hook, two fall hook, 300kg searcher hook, remote control, LPG option.   |   |

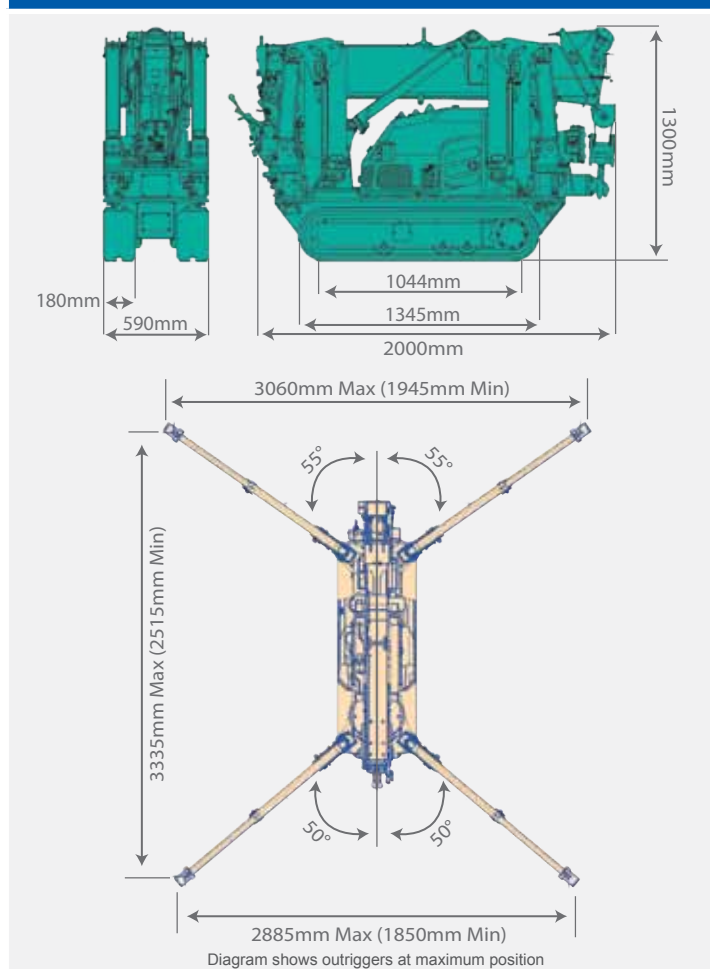
## Total rated load Outriggers at Maximum position

| 1.83m boom         |                       | 2.97m boom         |                       | 4.21m boom         |                       | 5.45m boom         |                       |
|--------------------|-----------------------|--------------------|-----------------------|--------------------|-----------------------|--------------------|-----------------------|
| Working radius (m) | Total rated load (kg) | Working radius (m) | Total rated load (kg) | Working radius (m) | Total rated load (kg) | Working radius (m) | Total rated load (kg) |
| <1.0               | 1720                  | <1.0               | 1720                  | <1.3               | 1320                  | <1.7 or            | 770                   |
| 1.30               | 1320                  | 1.30               | 1320                  | 1.50               | 1120                  | 2.00               | 700                   |
| 1.55               | 1090                  | 1.50               | 1120                  | 2.00               | 820                   | 2.50               | 660                   |
|                    |                       | 2.00               | 820                   | 2.50               | 670                   | 2.80               | 580                   |
|                    |                       | 2.50               | 670                   | 3.00               | 530                   | 3.00               | 530                   |
|                    |                       | 2.69               | 580                   | 3.50               | 420                   | 3.50               | 410                   |
|                    |                       |                    |                       | 3.93               | 370                   | 4.00               | 330                   |
|                    |                       |                    |                       |                    |                       | 4.50               | 270                   |
|                    |                       |                    |                       |                    |                       | 5.17               | 220                   |

## Total rated load Outriggers at any other position

| 1.83m boom         |                       | 2.97m boom         |                       | 4.21m boom         |                       | 5.45m boom         |                       |
|--------------------|-----------------------|--------------------|-----------------------|--------------------|-----------------------|--------------------|-----------------------|
| Working radius (m) | Total rated load (kg) | Working radius (m) | Total rated load (kg) | Working radius (m) | Total rated load (kg) | Working radius (m) | Total rated load (kg) |
| <1.0               | 1220                  | <1.0               | 1220                  | <1.3               | 940                   | <1.7               | 720                   |
| 1.30               | 940                   | 1.30               | 940                   | 1.50               | 810                   | 2.00               | 600                   |
| 1.55               | 790                   | 1.50               | 810                   | 2.00               | 600                   | 2.50               | 390                   |
|                    |                       | 2.00               | 600                   | 2.50               | 390                   | 2.80               | 330                   |
|                    |                       | 2.50               | 390                   | 3.00               | 300                   | 3.00               | 300                   |
|                    |                       | 2.69               | 310                   | 3.50               | 220                   | 3.50               | 220                   |
|                    |                       |                    |                       | 3.93               | 180                   | 4.00               | 180                   |
|                    |                       |                    |                       |                    |                       | 4.50               | 140                   |
|                    |                       |                    |                       |                    |                       | 5.17               | 100                   |

## Dimensions



## Maximum Reach Below Ground Level

| Four Fall | Two Fall | Single Fall |
|-----------|----------|-------------|
| 7m        | 14m      | 28m         |

## Working Range Diagram

