

MARSHLAND ST. JAMES SCHOOL

NEWSLETTER



ISSUE 7 - FRIDAY 17TH OCTOBER 2025

Dear Parents and Carers, here we are in the penultimate week of Autumn 1, and what a half term it has been. I have really enjoyed meeting all of you, and getting to know the children. I hope that you can all see the direction in which we are steering the school. and the whole staff appreciate your support.

This week, Year 6 have been completing SAT style assessments so that we can see where children are working, and plan our lessons accordingly. I have been with them for some of these sessions, and I was very impressed with their 'can do' attitude, and I know that Mrs. Penfold has been too. As we said to the children - this is your opportunity to shine, and show off and show us what you know!

Next week is assessment week for the rest of the school, so by the time you come in for parent consultations, we will know where all children are working in relation to age related expectations. If you haven't yet booked a parent consultation - please do so via the MCAS app. If you are struggling to make the timings, please speak to your child's teacher to arrange a convenient time.

Wishing you a great weekend! Ms. Lucca and the Marshland Team.

POPPIES

Poppies will be on sale in school from next Monday, House Captains will be taking them around to classrooms. Please send your child in with a donation in a named envelope should they wish to purchase an item. Nursery - these will be available in the morning session.

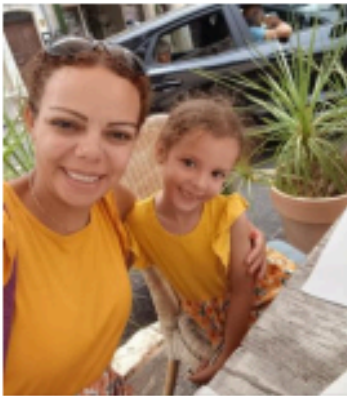
END OF DAY PROCEDURES

We are reviewing the way that we dismiss Year 5 and 6 at the end of the day, as we know that the front of school is quite congested at that time. It may be that we ask for parental permission for children to leave the class when the adult is at the door, rather than waiting to be called, but we will send out a communication about this ready to begin after half term.

FOSA: MEET THE TEAM - IN THEIR OWN WORDS!

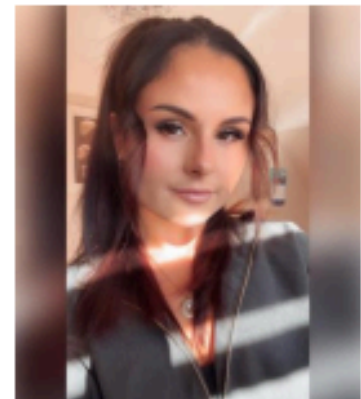
About us

Our aim at FOSA is to raise funds so we can provide gifts, outings and activities which are not normally provided by the local authority for our children and school. We run several events throughout the year such as present room, Christmas Fayre, Mother's day afternoon tea etc. to help raise these funds. We are always on the look out for new members who may be able to spare a few hours throughout the year to assist with some of these events. If you would like to consider joining please feel free to chat to one of the below committee members who will be happy to provide you with further information.



Chantal Warwicker – Chairperson

Chantal has recently taken on the role of Chairperson having been helping FOSA for a year now with their events. She is mum to April who is in year 2, Isabelle who has just started in reception and to Max who is almost 2. She enjoys baking and keeping busy and helped prepare the food for this years mother's day afternoon tea.



Izabela Coleman – Vice Chairperson

Izabela is mum to Charlie who is in year 2 and Amelia who should be joining the school in September 2026. She has been part of FOSA for almost a year now and has kindly taken on the role of Vice Chairperson to help us to continue raising funds for the children.



Stacey Hellyer-Garrett – Secretary

Stacey is mum to Ayrton who is in year 2 and has another little boy Theo who is 2. She has been with FOSA for almost a year and has recently taken on the role of secretary. Stacey has helped with many events over the last year and has been a huge help with getting bits organised.

Jan McGuffog - Treasurer

Jan has been coming to Marshland Primary School for the past 43 years – firstly with her own four children and then with her 6 grandchildren, with one little one yet to join the school.

In the past she has been a school governor when her children attended and for the past 5 years she has taken on the role of Treasurer.

'I love being involved with a lovely village school that feels more like family, and being a member of FOSA enables me and the rest of all our volunteers, to help raise money to treat the school and children with things they wouldn't normally be able to have the pleasure of doing.'



SUBJECT FOCUS THIS WEEK: PSHE (PERSONAL, SOCIAL, HEALTH & ECONOMIC EDUCATION)

We use the local authority PSHE Curriculum to teach our children about how to become a citizen of the world. Each week we focus on a particular area, with an emphasis on discussion, role-play, scenarios and strategies to support our children when faced with challenging situations.

N/RC

In our PSHE this week we have been focusing on personal hygiene. We have been exploring germs and how quickly they can spread through coughs and sneezes. We used paint and watched how quickly the 'germs' spread when we touch things without washing our hands. The children have also explored the need for soap and how to wash their hands properly. The children made some lovely observations during this activity. 'Germs spread so fast' 'We need to wash our hands when we sneeze' 'Washing my hands gets rid of germs'. Well done NRC.



1/2B

In our PSHE lessons in 1/2B, we have been thinking about 'Belonging'. There are lots of groups that we belong to, and they are very special to us. We belong to and with, our families, our school, our friends and lots of clubs that we love to attend. This week we have made 'I belong' hand outlines with everything we belong to represented on the fingers.

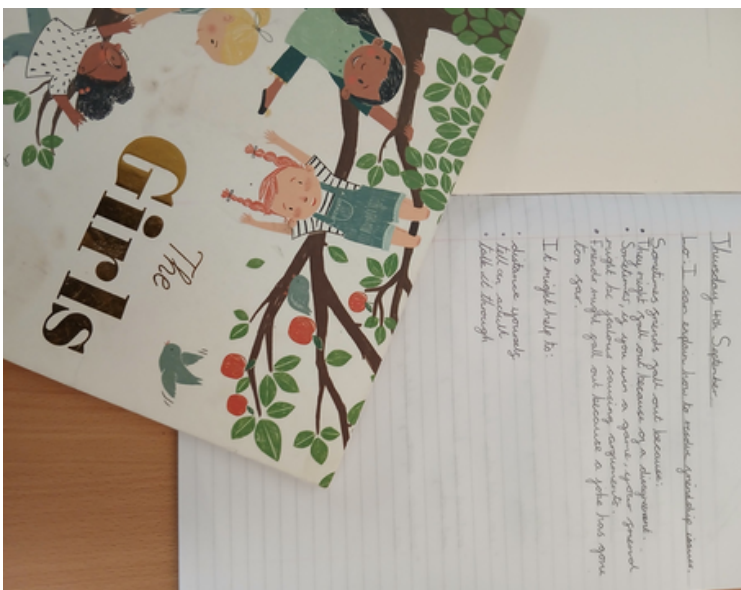


3/4A

This week in PSHE class 3/4A have been looking at how to stay safe online. We've used the acronym SMART to help us remember what to do. S is for safe; do not share personal information with people online, this includes where you go to school, where you live and your name. M is for meeting; do not agree to meet people you have met online, unless your parent has agreed and joins you. A is for accepting, don't open or accept emails or messages from strangers, these can break or track your device and the content could be nasty or inappropriate. R is for reliable; you cannot always trust that what you see online is true and factual, check with a grown up or other sources to confirm its accuracy, people can also not be who you expect. T is for tell; if you see something that makes you uncomfortable or worried online tell an adult you trust, do the same if you feel someone may be being bullied.



5/6P



In PSHE this half term, we have been learning about friendships and what being a good friend means. We have used the book 'The Girls' by Lauren Ace to learn about differences and accepting those differences. The children have been so mature throughout these lessons, learning through rich discussion and responsive learning. Following on from this, we have learnt about bullying, different types of bullying and what to do if we are worried about either ourselves or a friend being bullied.

CLASS ASSEMBLY

This week we shared our first class assembly - well done to 1/2B! Unfortunately, I was in a meeting with the SEN team so I couldn't attend, but I did catch up with a few parents and heard that it went really well. They had a rehearsal in the morning to the whole school and everyone enjoyed it - it's great for us to share our learning with you all and appreciate everyone taking the time to come into school.



ATTENDANCE & SAFEGUARDING

Headline Figures (09/10/2025 - 16/10/2025)

Attendance	Absence	Persistent Absence	Authorised	Unauthorised	Lates	Severely Absent (<=50%)
95.2%	4.8%	11.8%	3.9%	0.9%	2.6%	3 3.5%

Whole school attendance is going up again this week which is great. Please remember to check in with school if your child is a little under the weather - we will advise you as to whether they can come in or not according to NHS guidelines, and will contact you should we feel that they need to be at home. Often, with coughs and colds, children feel better when they are with their peers and have their minds occupied with learning!

STARS OF THE WEEK



A huge 'Well Done' to:

EDEN M, MACY, AARON and LUCILLE for being our stars of the week. You should be very proud of yourselves!

Thanks as always to our families for sharing our Celebration Worship today - and thank you to Miss Cadman for leading today as I have not been in school.

UPCOMING EVENTS



October

- 10th - Christmas Cards sent home with children (FOSA)
- 16th - 1/2B Class assembly @2.45pm - all welcome.
- 17th - Return FOSA Christmas Cards to school
- 20th - Oral Health Dental care practitioner in school - all year groups
- 23rd: Parent Consultations
- 23rd - Non-Uniform Day (FOSA £1 contribution via MCAS)
- 24th: Training Day - Children should not attend school

**MORE DATES
WILL BE ADDED
EACH WEEK SO
PLEASE DO
CHECK.**

November

- 4th - Year 6 NCMP Screening (Height and Weight)
- 5th School photos (Individual and in-school siblings)
- 6th New Reception Open session @ 2.15pm - Please share!
- 12th and 13th - Year 6 Bike-ability Scheme. (Bikes and helmets please!)
- 13th - 5/6P Class assembly @2.45pm - all welcome.
- 20th - NRC Class assembly @2.45pm - all welcome.
- 21st Flu jabs (details and sign up will be sent out)
- 27th - 3/4A Class assembly @2.45pm - all welcome.
- Mon 24th– Fri 28th (lunchtimes in school) Christmas present room
(FOSA)

December

- 4th - Christmas Fayre - School Hall 3.30pm - 4.30pm (FOSA)
- 10th - Pantomime @Kings Lynn Corn Exchange (FOSA - details to follow)